




MinimumRC B-25 Mitchell Assembly Instructions

[Home](#) » [MinimumRC](#) » MinimumRC B-25 Mitchell Assembly Instructions 

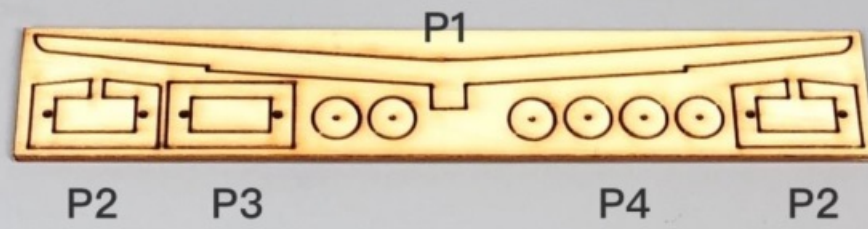
MinimumRC B-25 Mitchell Assembly Instructions

MinimumRC™

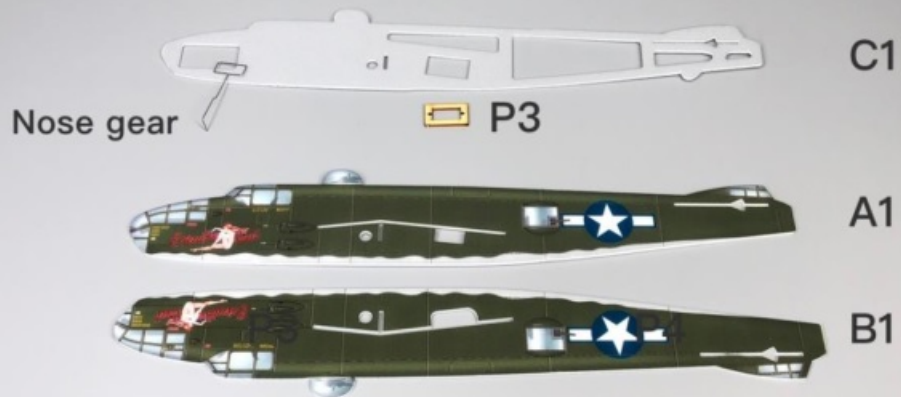
B-25 Mitchell
Assembly Instructions



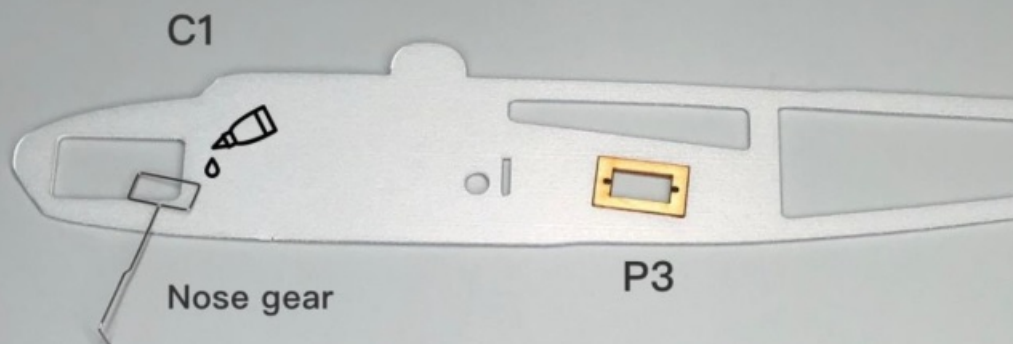
Plywood



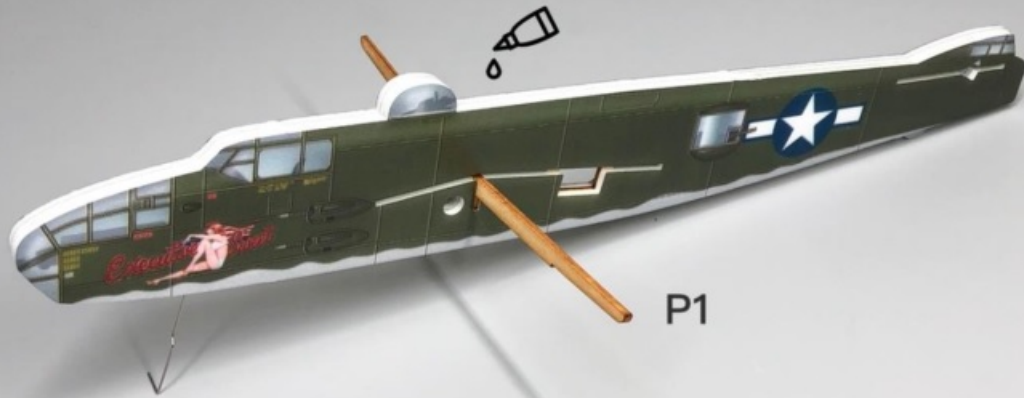
1



2

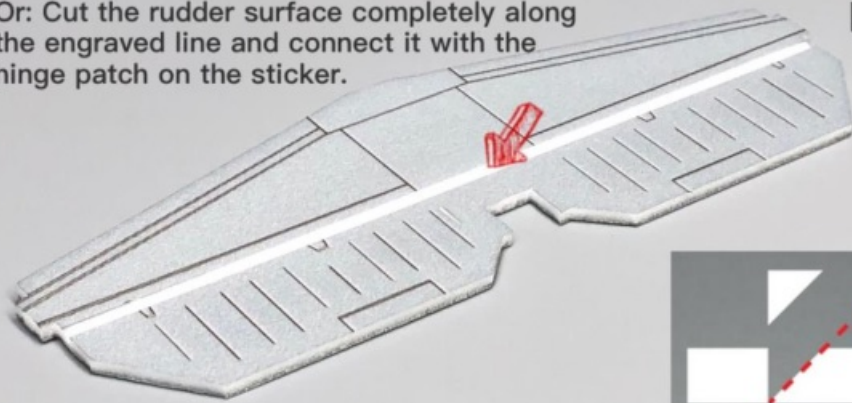


3



P1

- 4 Cut the bevel along the engraved lines of the elevator to make it movable.
Or: Cut the rudder surface completely along the engraved line and connect it with the hinge patch on the sticker.



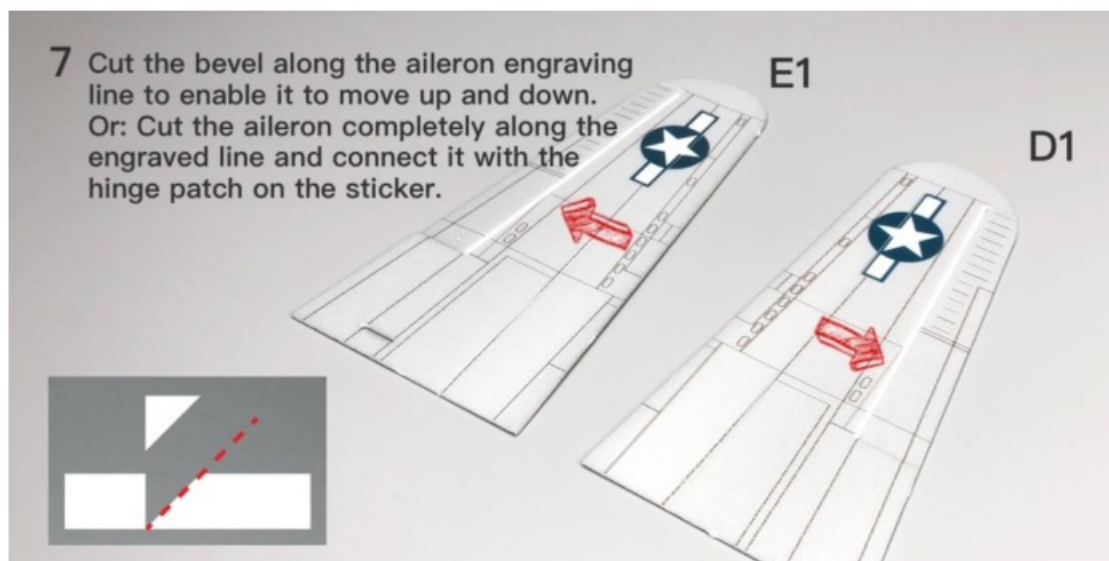
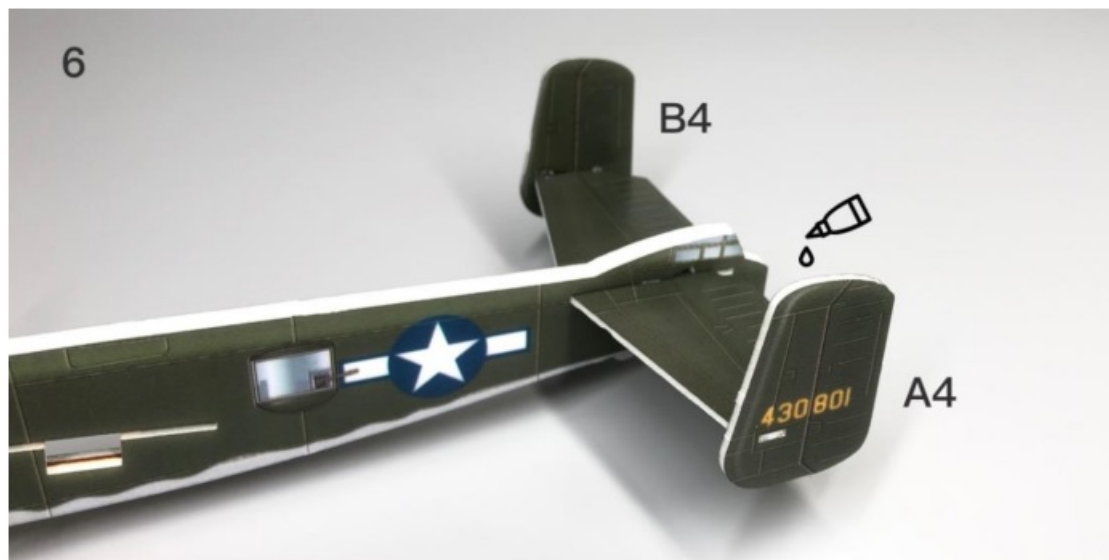
D2



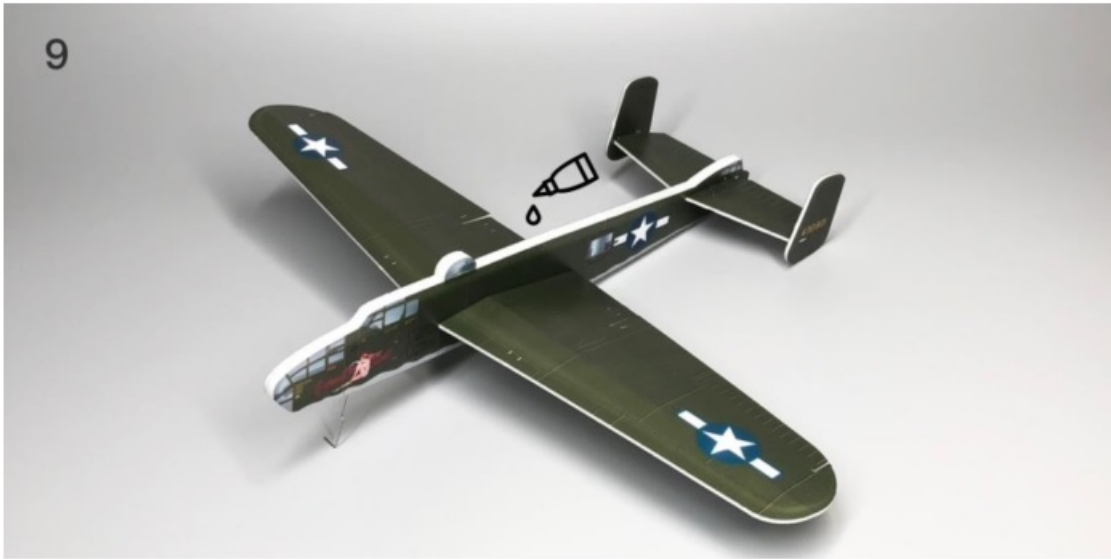
- 5 After the bevel is cut at the score line, the elevator can be turned down



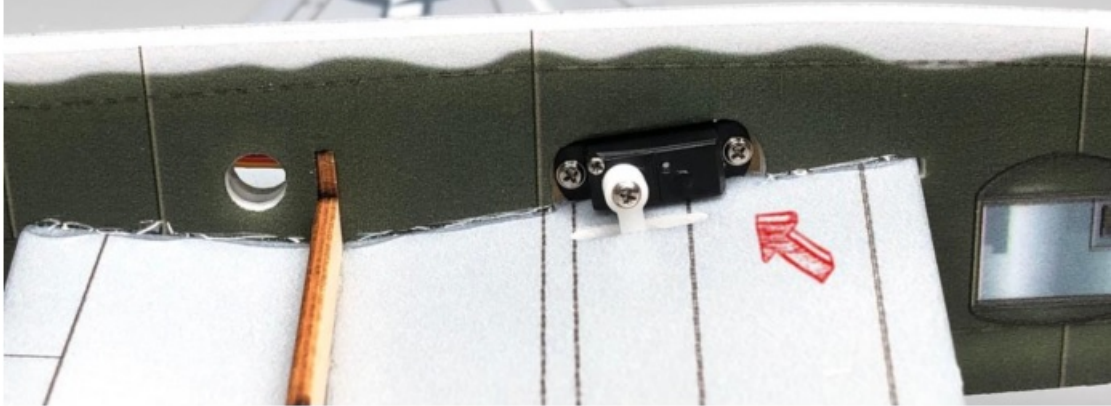
D2



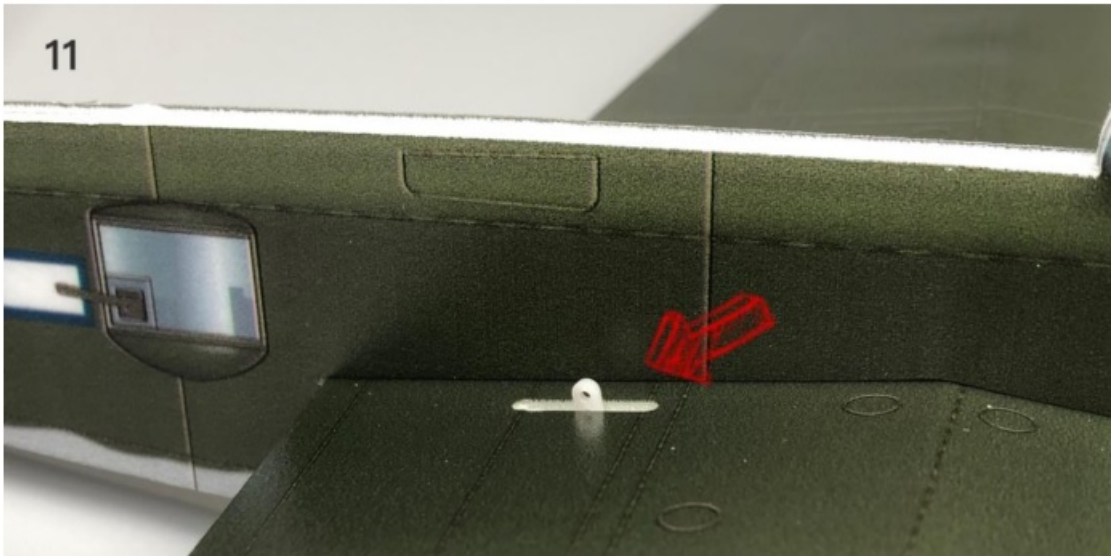
9

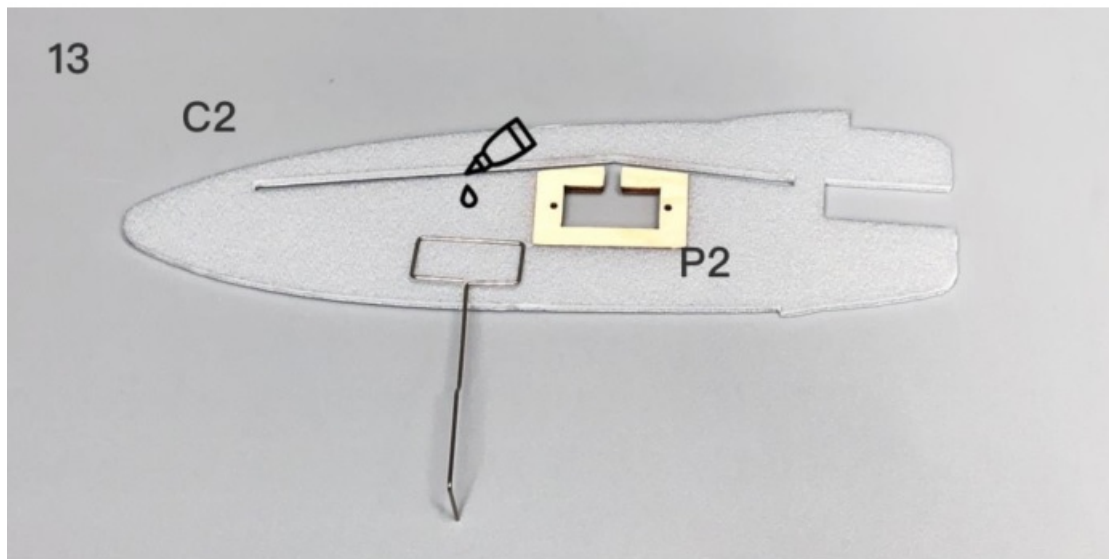
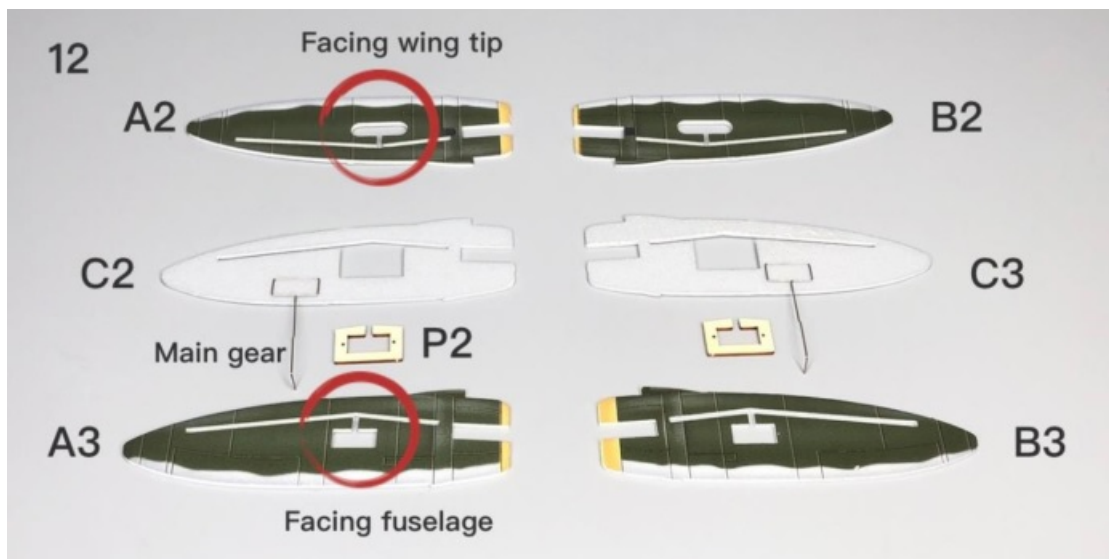


- 10 Install the elevator servo. (Before installing the servo arm, connect the servo to the receiver and turn on the power to ensure that the servo arm is in the neutral position.)



11

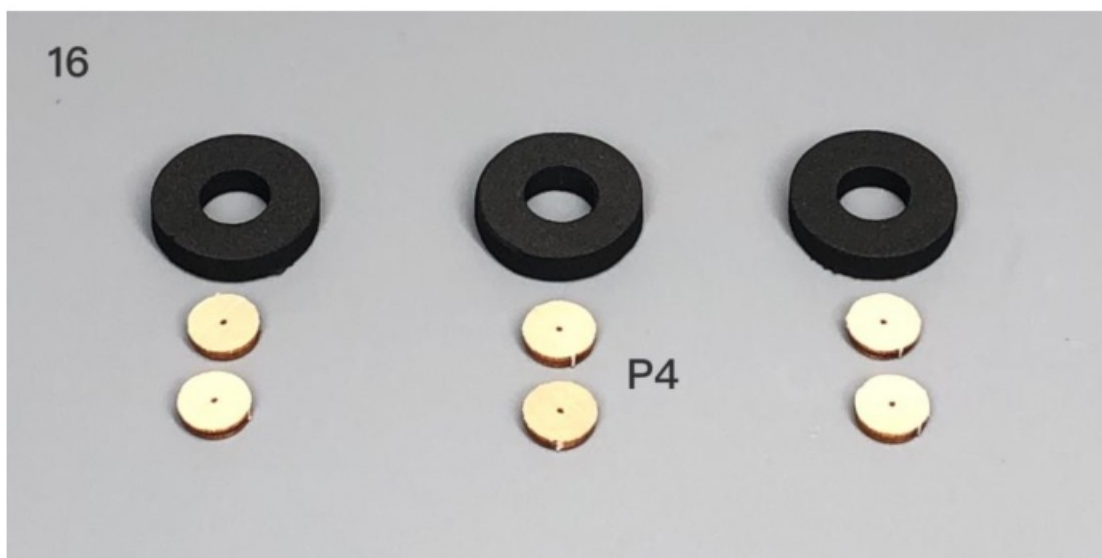




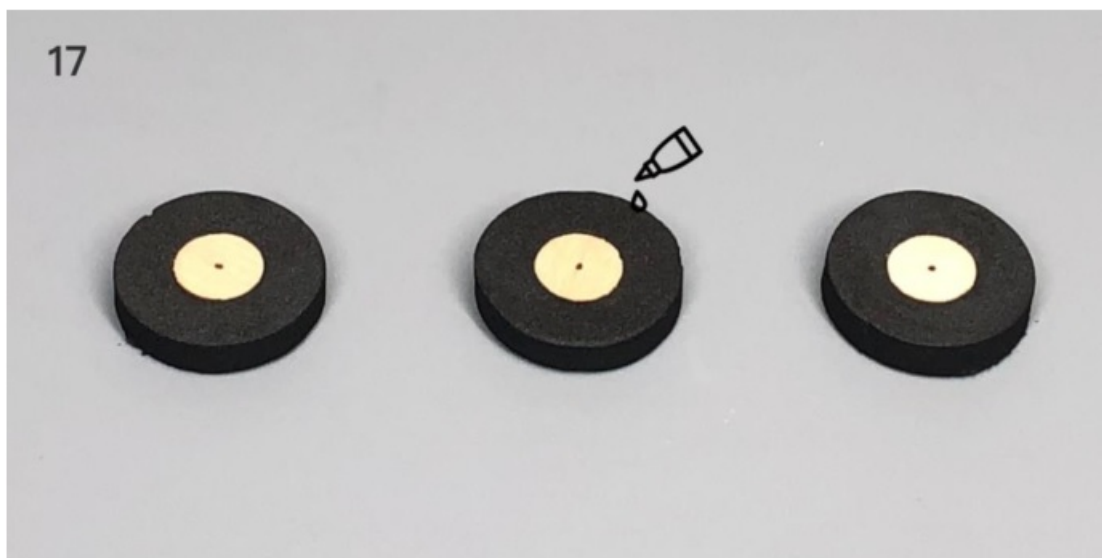
15



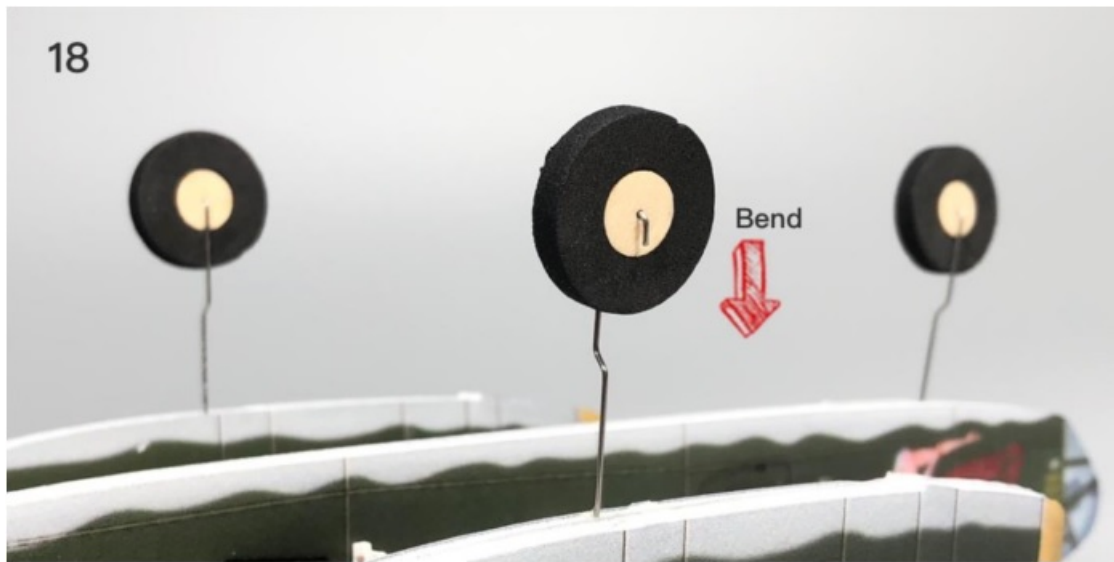
16



17



18

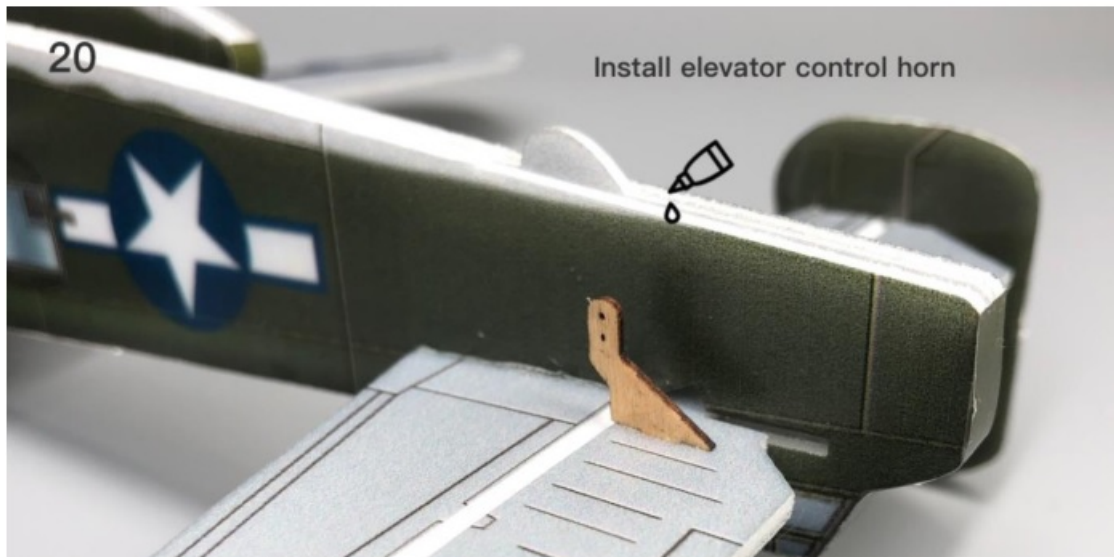


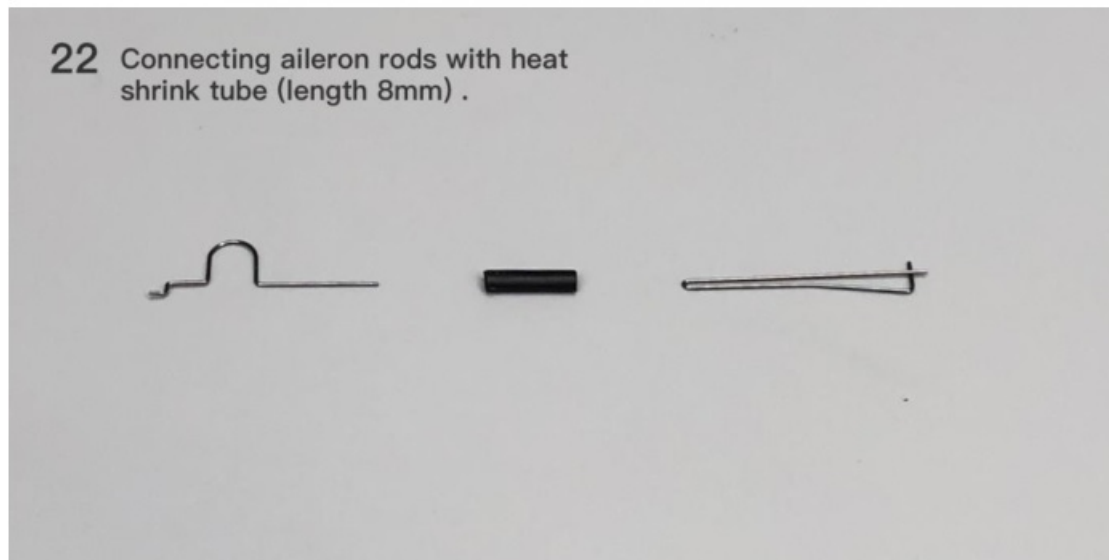
19 Install aileron servo and aileron control horns



20

Install elevator control horn





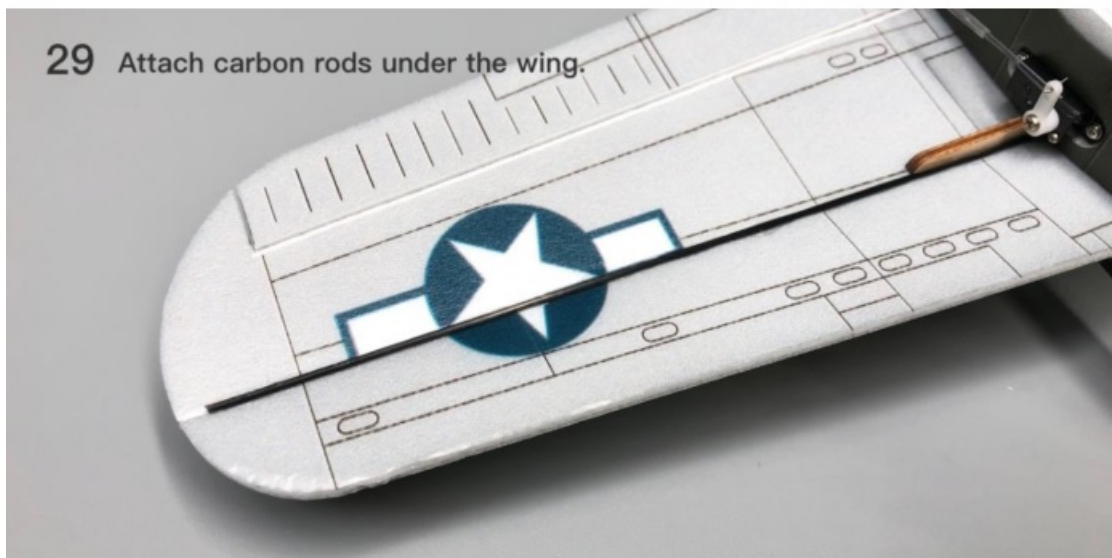


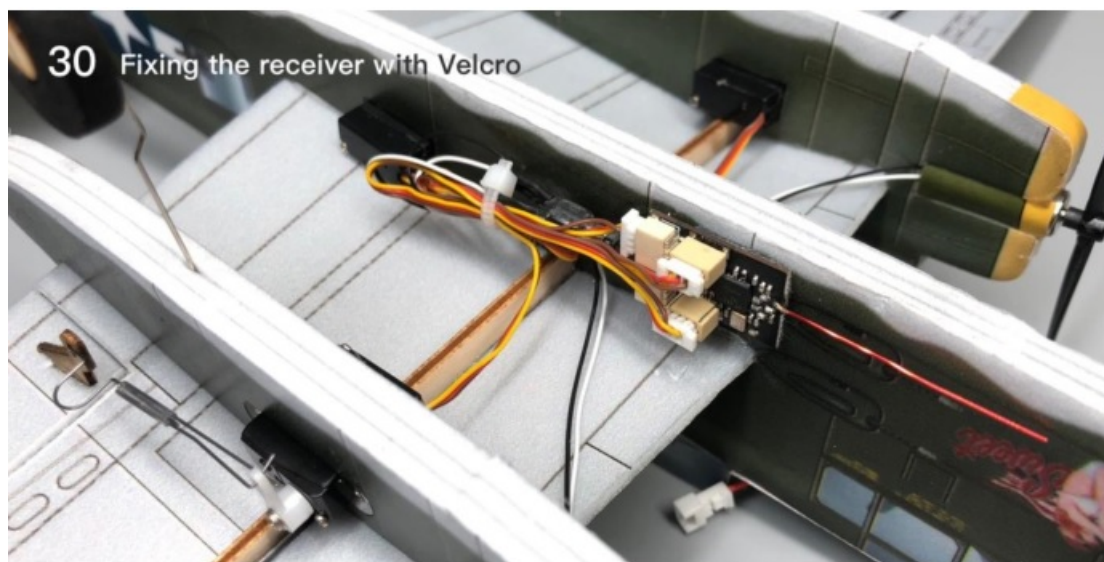
25 Use heat shrink tube to connect the elevator rod.
(The length of the carbon rod needs to be cut
according to actual needs)



26







First test flight

The center of gravity is 10 mm from the leading edge of the wing. Move the battery forward and backward to adjust the center of gravity.

The range of elevator and aileron movement is 5 mm for each side. Please adjust the rudder surface to the level before flight test.

MinimumRC B-25 Mitchell Assembly Instructions – [Download \[optimized\]](#)

MinimumRC B-25 Mitchell Assembly Instructions – [Download](#)

[Manuals+](#).