

MinimumRC A6M5-D 4 Channel RC Airplane Instruction Manual

Contents

- [1 MinimumRC A6M5-D 4 Channel RC Airplane](#)
- [2 Product Information](#)
- [3 Product Usage Instructions](#)
- [4 Assembly Instructions](#)
- [5 Install the tail](#)
- [6 Documents / Resources](#)

MinimumRC™

MinimumRC A6M5-D 4 Channel RC Airplane



Product Information

- The A6M5-D is a model aircraft that comes with assembly instructions.
- It is supplied with UFO glue for bonding foam parts and 502 glue for bonding wood, carbon fiber, and metal parts.
- It is important to note that 502 glue can cause serious corrosion to foam parts.
- The model also includes a heat shrinkable tube that should not be heated with a flame, but instead with an electric iron.
- To remove the parts from the plate, a razor blade should be used instead of tearing them by force.
- The fuselage internals are to be bonded using 502 glue.
- The servos need to be connected to a powered receiver and bound with a transmitter to ensure the servo arms return to their neutral point.
- It is recommended to test the servos for normal functioning and install the servo arms according to the provided picture.

- Once assembled, adjustments cannot be made.
- The three servos are installed and fixed under the plywood board, as shown in the bottom view picture.
- The receiver needs to be connected to the motor, and the rotation direction of the motor should be tested.
- If the motor is reversed, the motor line should be reversed as well.
- The corresponding relationship between the three steering gears and the transmitter channel should also be tested for correctness.
- After testing, the receiver should be fixed with Velcro and the cables tied.
- The magnet base and magnet should be installed according to the instructions.
- The wooden structure needs to be fixed with glue by aligning the scribed line on the inner side of the fuselage.
- The propeller needs to be removed temporarily to press and bend the top plate and bottom plate of the fuselage into the corresponding shape of the fuselage contour.
- The top plate and bottom plate should then be fixed with glue, except for the area marked by the red line which is the battery cover plate.
- To avoid interference with the motor gears, the illustrated orange area on the sticker should be cut out.
- The fuselage needs to be combined, and the battery cover magnet should be fixed with glue and covered with stickers.
- The battery cover can be opened and closed, and it can be adsorbed in the closed position by the magnet. The fuselage sticker should be pasted and the propeller installed.
- The wing surface, aileron half-cut line, tail surface, and rudder surface need to be scored with the end of a carbon fiber rod.
- The tail should be installed. The wings should be attached to the fuselage.
- The copper axle core should be inserted into the center of the wood wheel core.
- The tires need to be glued, and the steel wire should be bent as shown in the picture.
- The outer end of the steel wire should also be bent. The landing gears, landing gear cover plate, and dummy fuel tank need to be installed.

Product Usage Instructions

1. Bond the inner structure of the fuselage using 502 glue.
2. Connect the servos to a powered receiver and bind it with a transmitter to ensure neutral positioning.
3. Test the servos for normal functioning and install the servo arms as shown in the picture.
4. Install and fix the three servos under the plywood board.
5. Connect the receiver to the motor and test the rotation direction. Reverse the motor line if necessary.
6. Test the corresponding relationship between the three steering gears and the transmitter channel.
7. Install the magnet base and magnet.
8. Fix the wooden structure with glue by aligning the scribed line on the inner side of the fuselage.
9. Temporarily remove the propeller. Press and bend the top plate and bottom plate of the fuselage into the corresponding shape of the fuselage contour. Fix the plates with glue, except for the area marked by the red line.
10. Cut out the orange area on the sticker to avoid interference with the motor gears.
11. Combine the fuselage.
12. Fix the battery cover magnet with glue and cover it with stickers.
13. Paste the fuselage sticker and install the propeller.

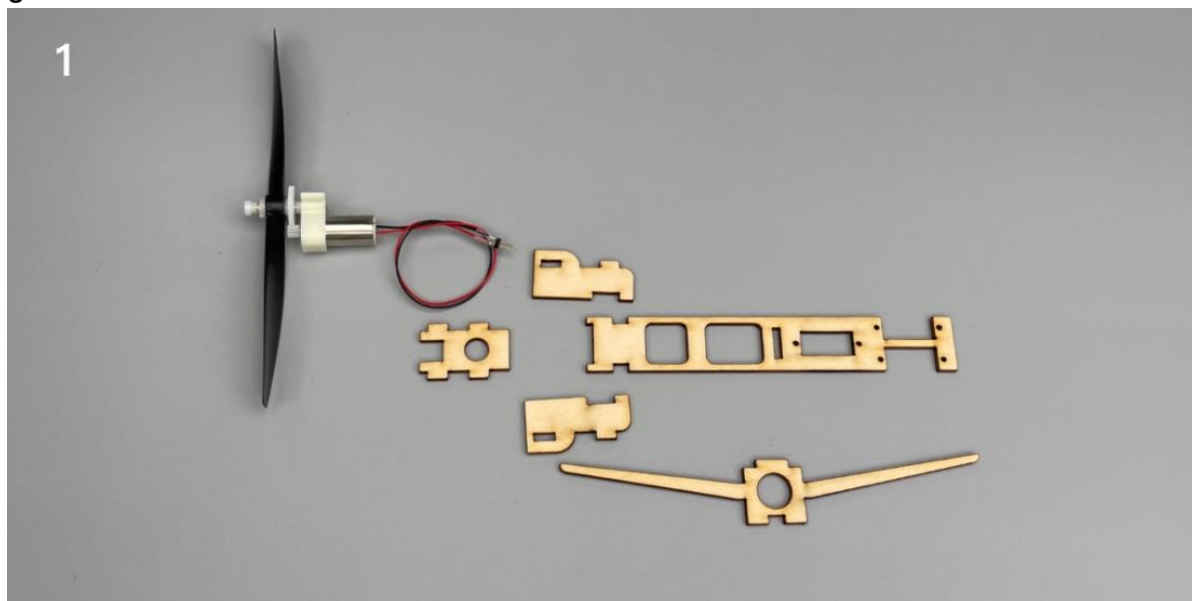
14. Score the wing surface, aileron half-cut line, tail surface, and rudder surface using the end of a carbon fiber rod.
15. Install the tail.
16. Attach the wings to the fuselage.
17. Insert the copper axle core into the center of the wood wheel core.
18. Glue the tires.
19. Bend the steel wire as shown in the picture.
20. Install the landing gears.
21. Fix the landing gear cover plate with circular stickers and reinforce with glue if needed.
22. Install the dummy fuel tank.

Important notification

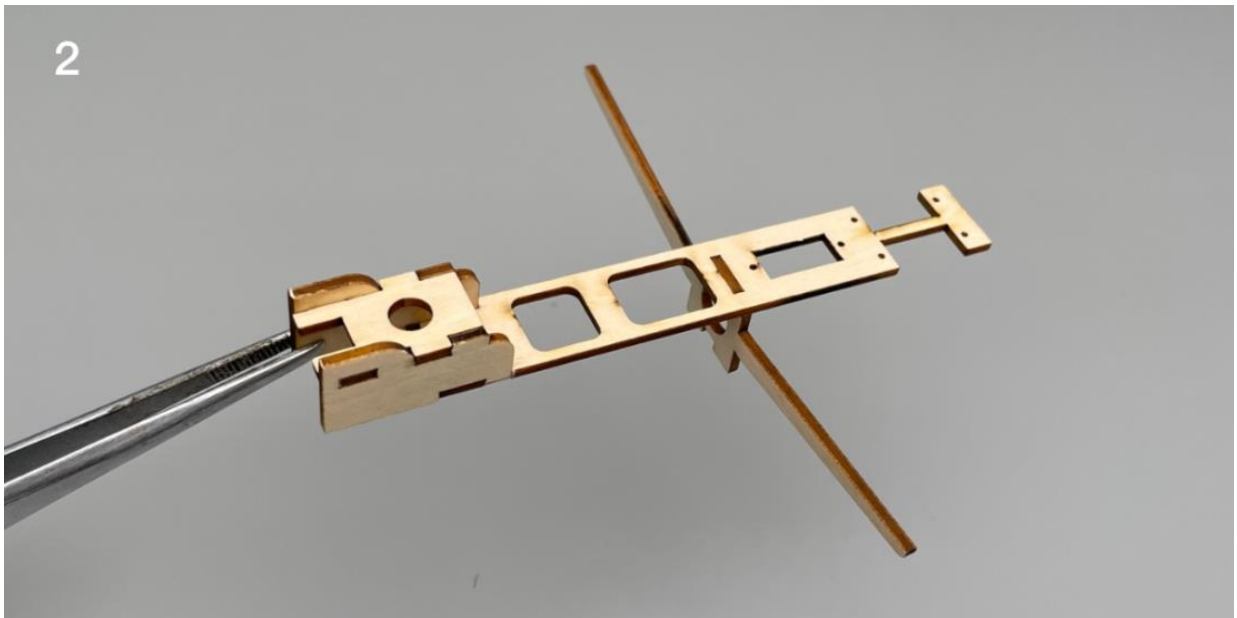
1. The model is supplied with UFO and 502 glue. UFO is for bonding foam parts, and 502 for bonding wood, carbon fiber and metal parts. 502 glue will cause serious corrosion to foam parts.
2. Please wait for the glue to dry and solidify in each installation step before the next installation.
3. Please avoid using flame to heat the heat shrinkable tube on the model. Electric iron shall be used for heating.
4. Please use razor blade to remove the parts from the plate. Do not tear the parts by force.

Assembly Instructions

Fuselage internals.

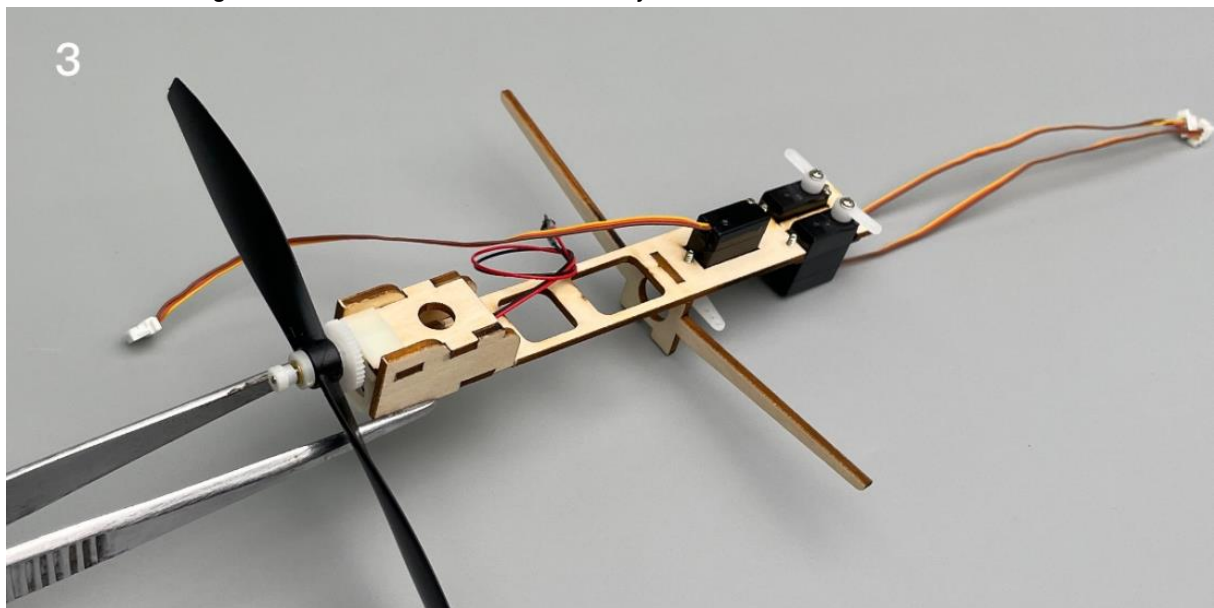


Bond the inner structure of the fuselage with 502 glue.

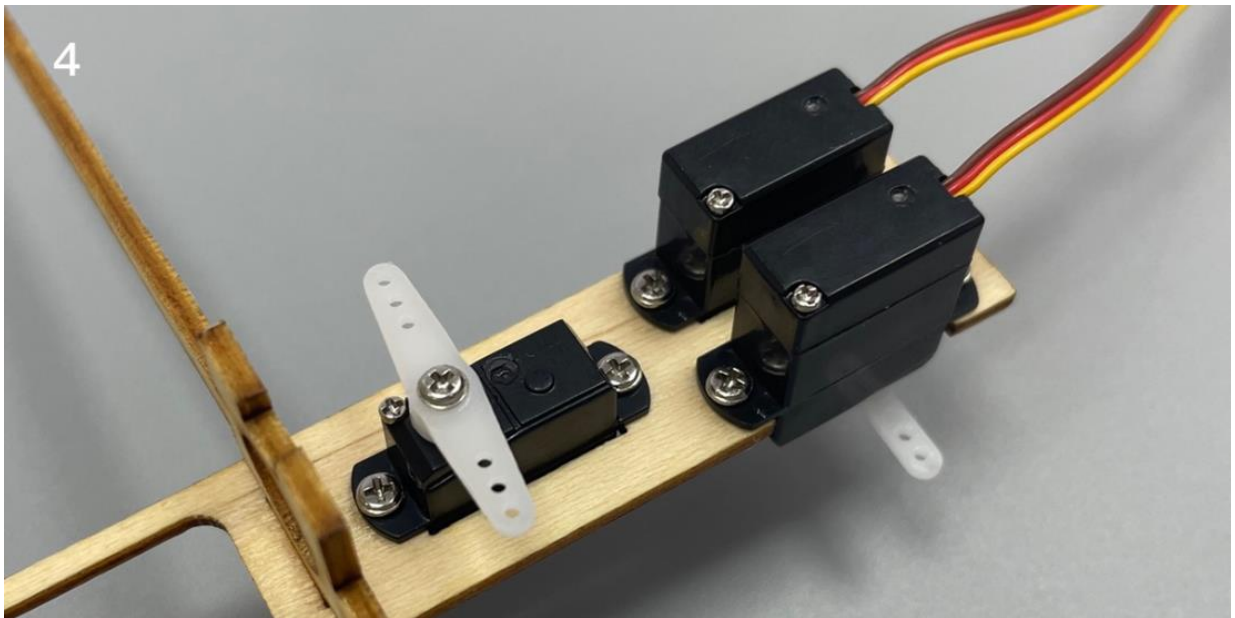


Connect the servos to a powered receiver. Bind the receiver with your transmitter to make the servos arms return to their neutral point. Test whether the servos are working normally, and install the servo arms according to the position shown in the picture.

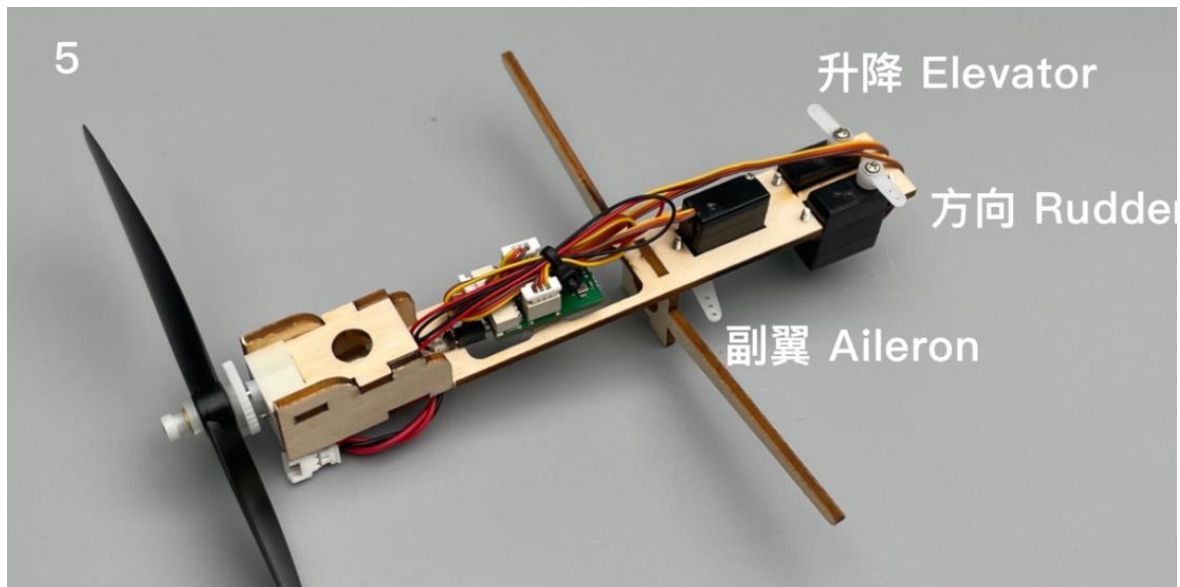
Note: Please make sure that the servos have been tested and installed in strict accordance with the following picture. After assembling the model, it will be not able to adjust.



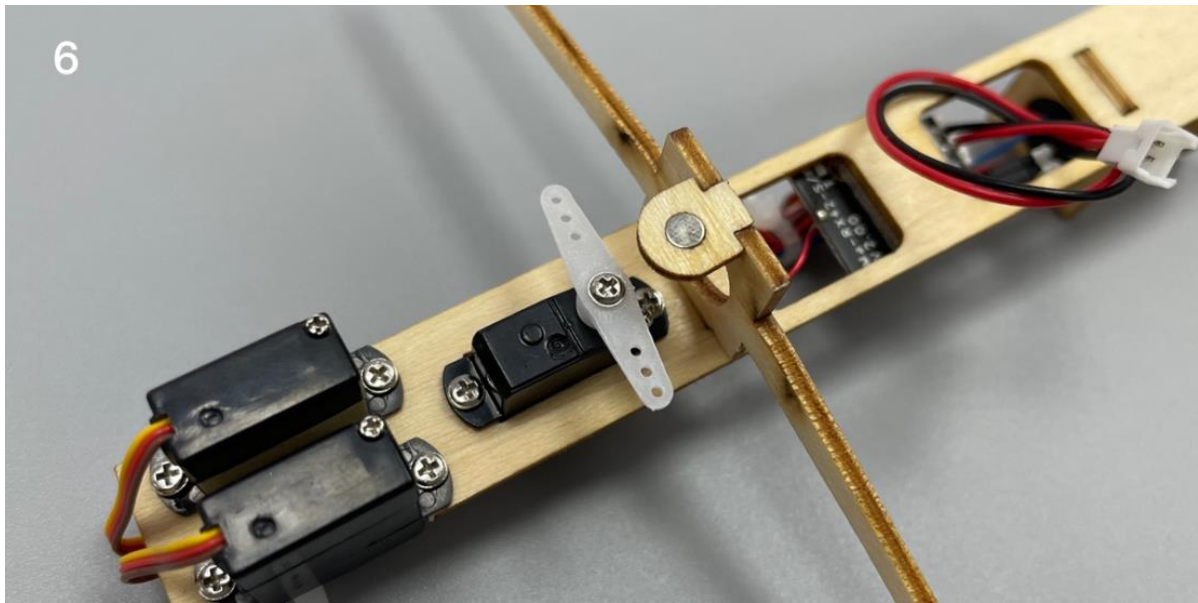
(bottom view) the three servos are installed and fixed under the plywood board.



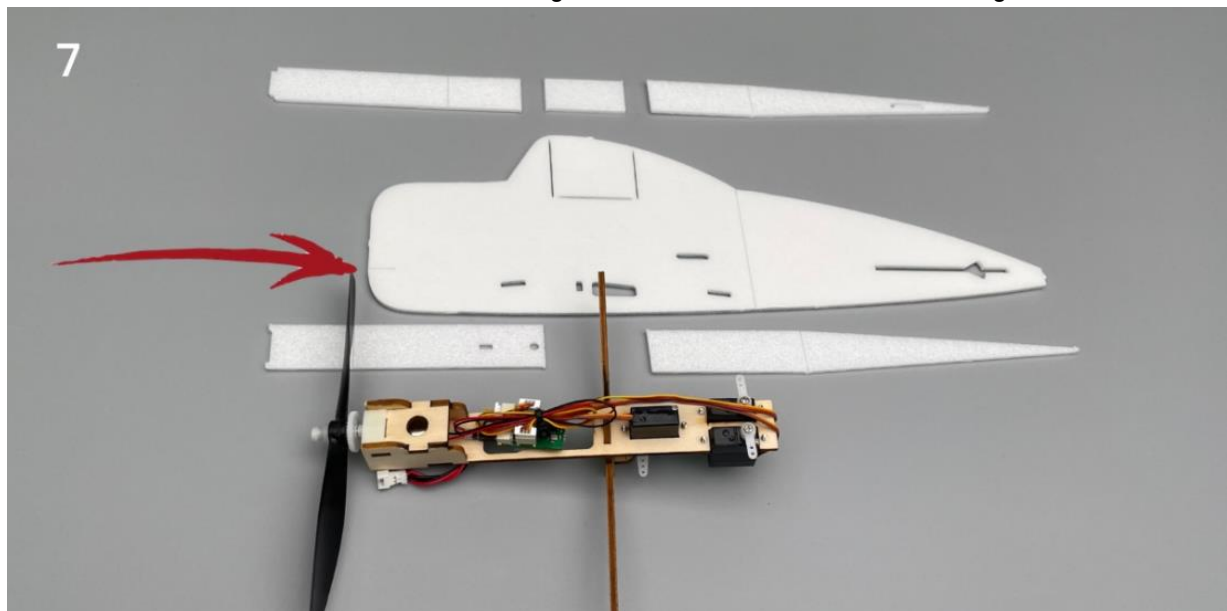
- Connect the receiver to the motor, install the propeller and test whether the rotation direction of the motor is correct.
- If the motor is reversed, reverse the motor line.
- Test whether the corresponding relationship between the three steering gears and the transmitter channel is correct (as shown in the figure).
- After the test, fix the receiver with Velcro and tie the cable.



Install magnet base & magnet.



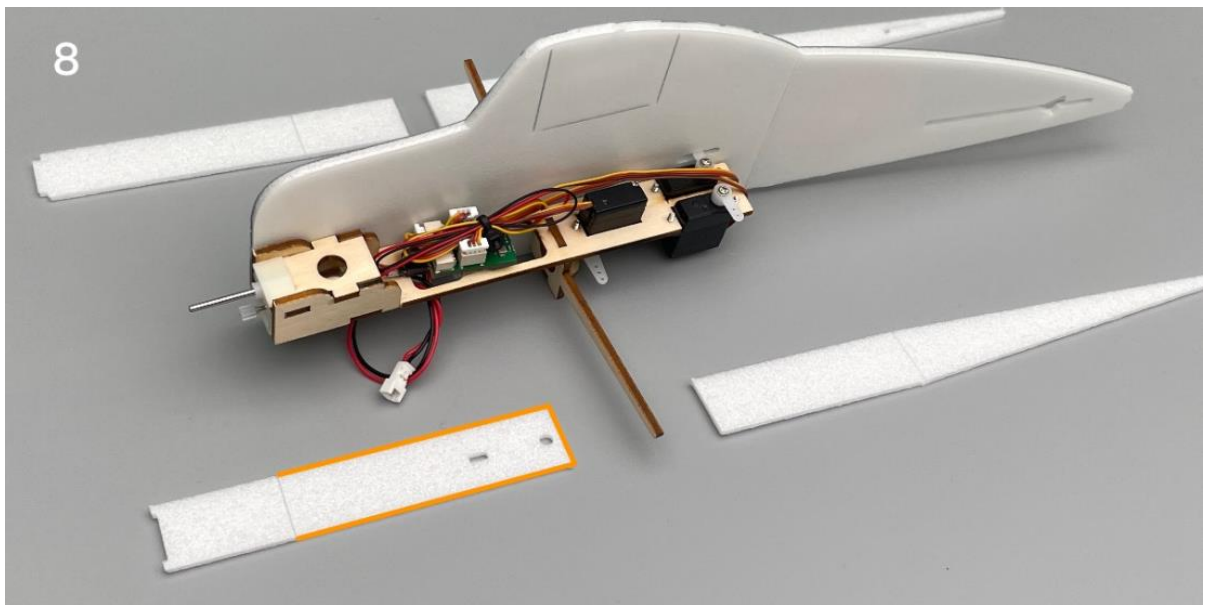
Align the scribed line on the inner side of the fuselage and fix the wooden structure with glue.



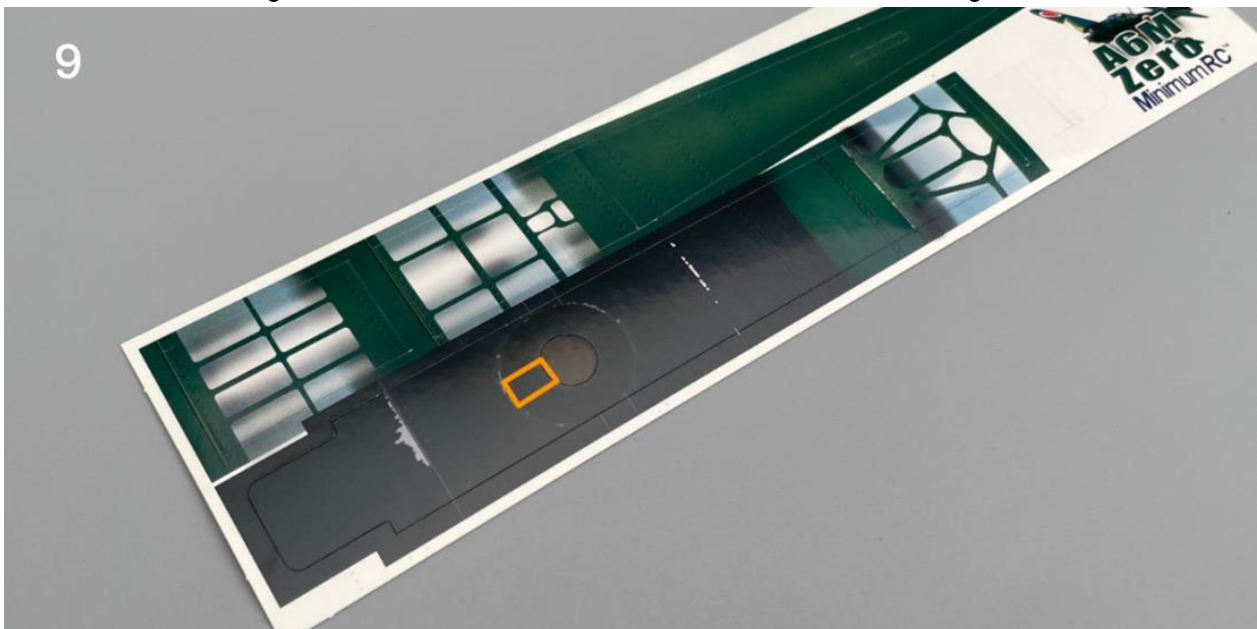
Remove the propeller.

- Press the top plate and bottom plate of the fuselage and bend them into the corresponding shape of the fuselage contour.
- Fix the top plate and bottom plate of the fuselage with glue.

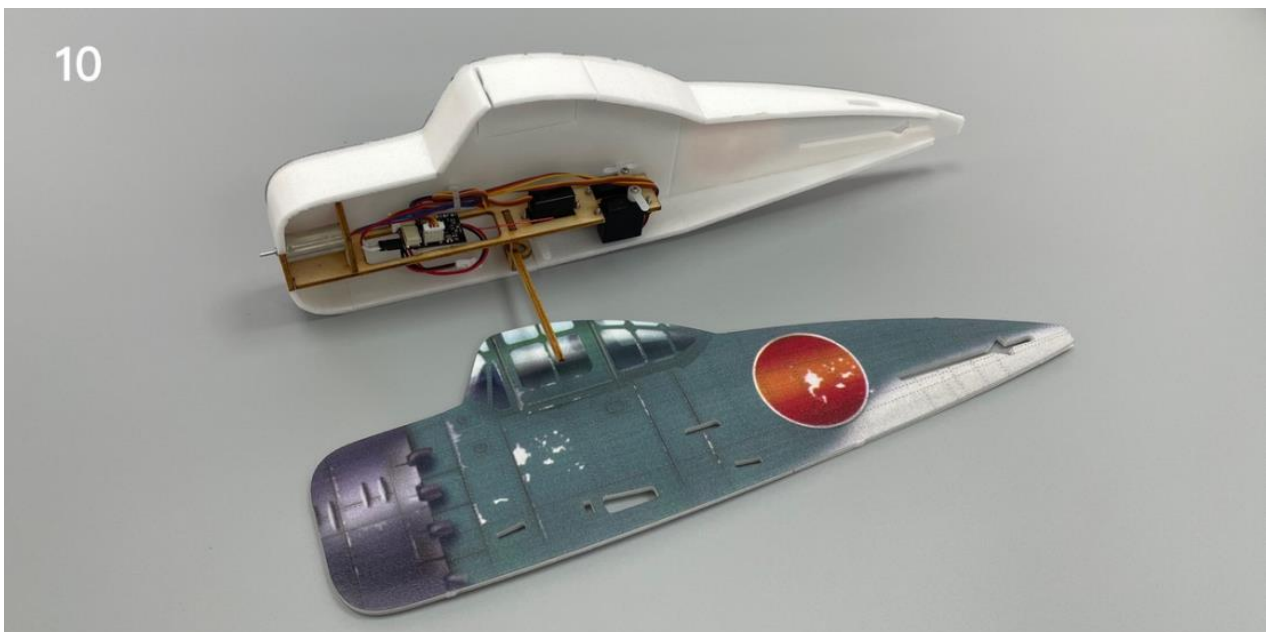
Note: the position shown in the figure is the battery cover plate that can be opened and closed. No glue shall be applied to the area marked by the red line.



Cut out the illustrated orange area on the sticker to avoid interference with the motor gears.



10



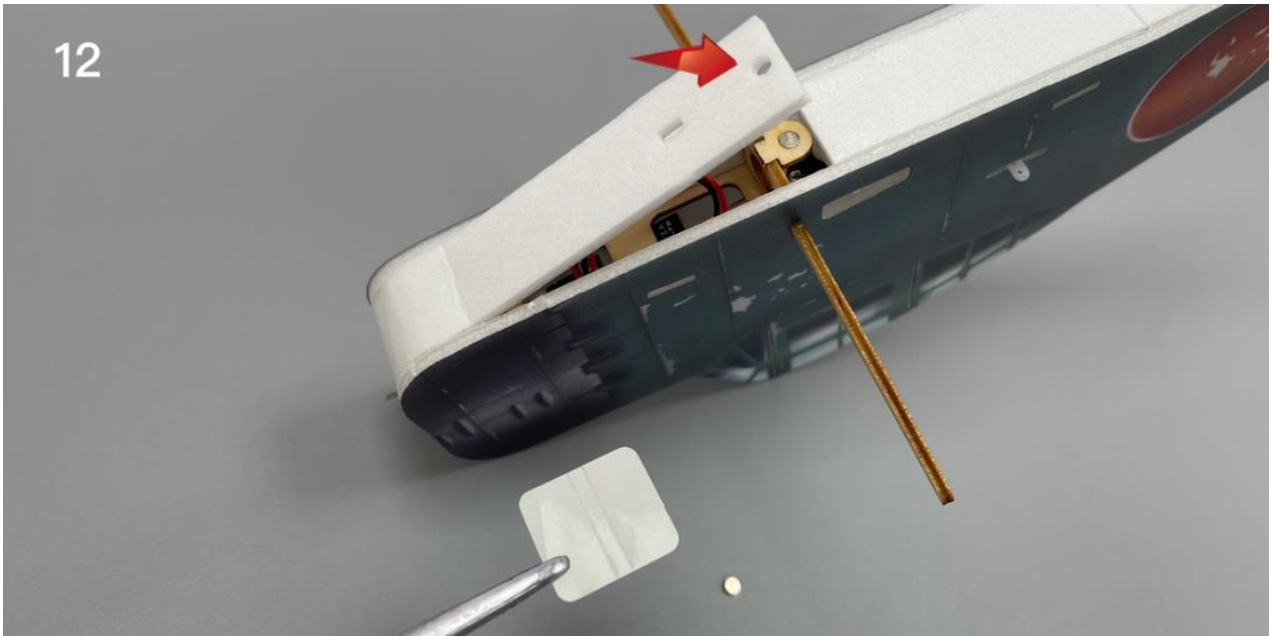
Combine the fuselage.

11



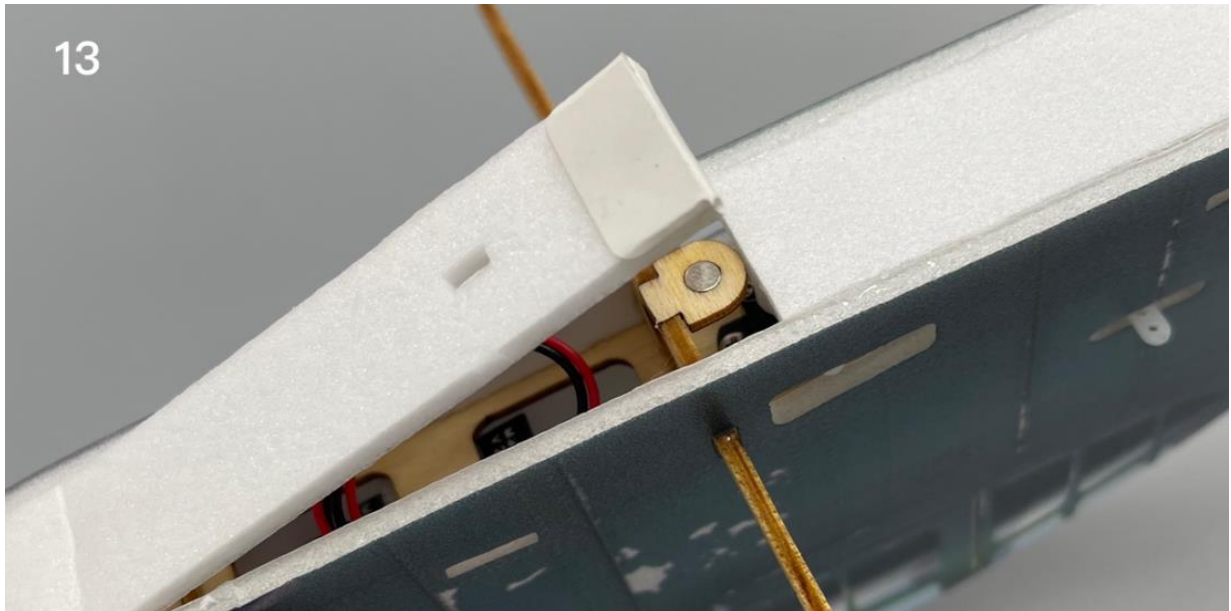
Fix the battery cover magnet with glue and cover it with stickers.

12

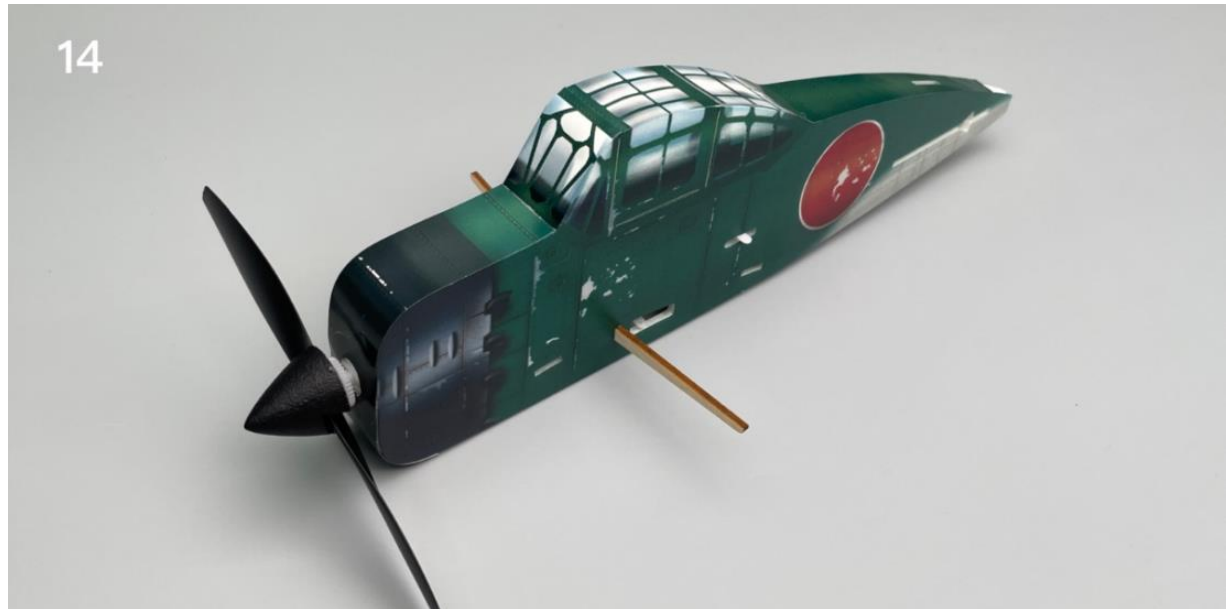


The battery cover can be opened, and can be adsorbed in the closed position by magnet.

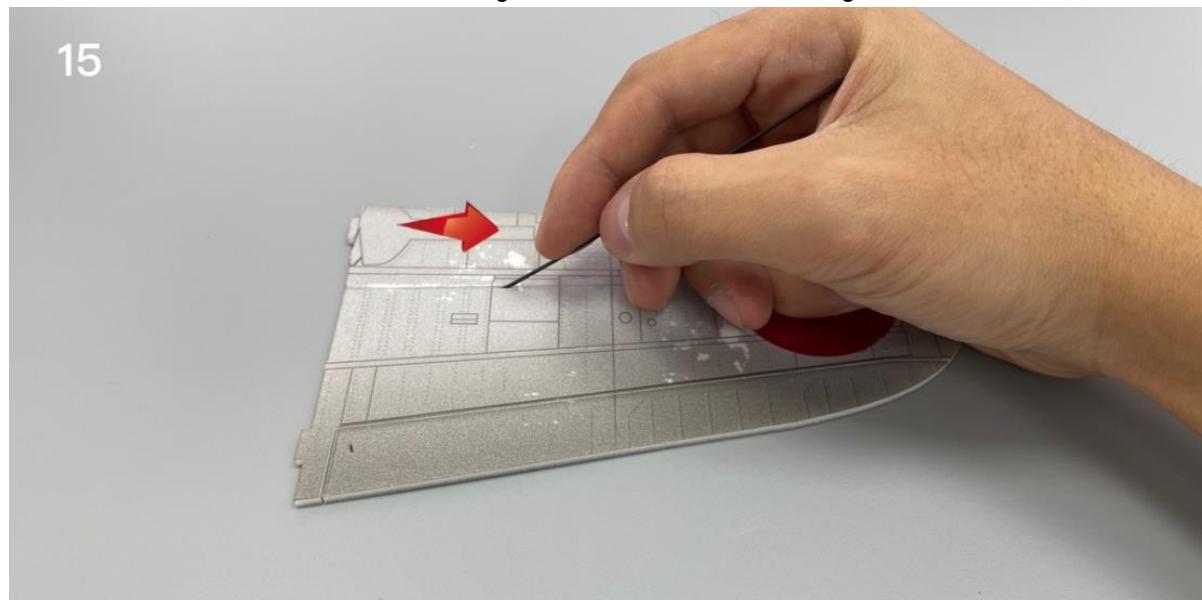
13



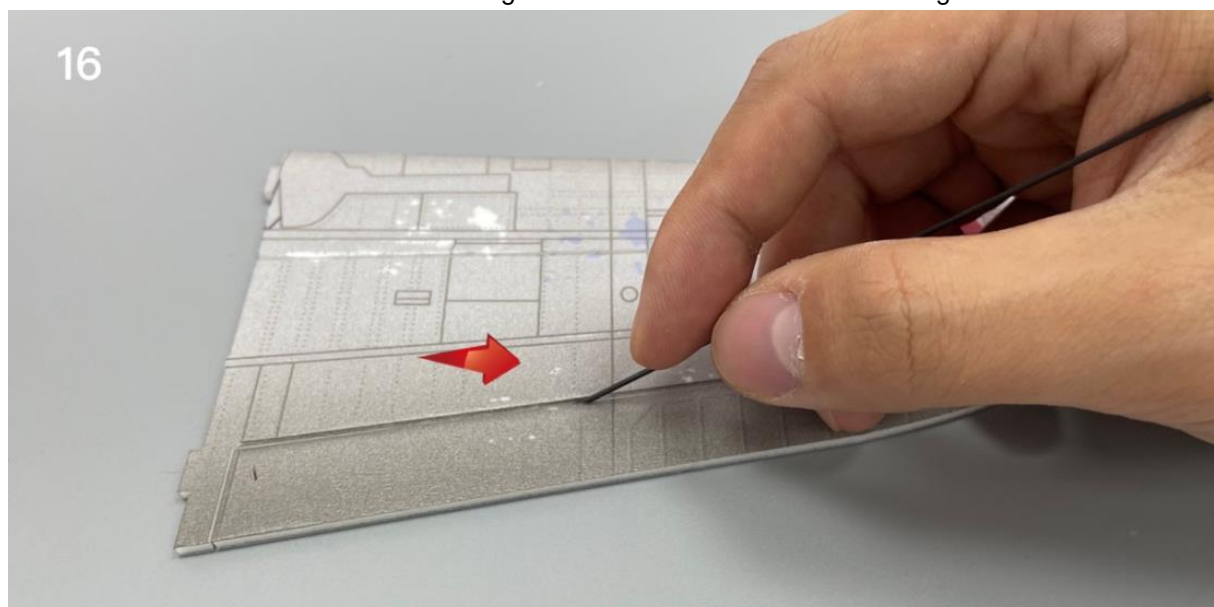
Paste the fuselage sticker and install the propeller.



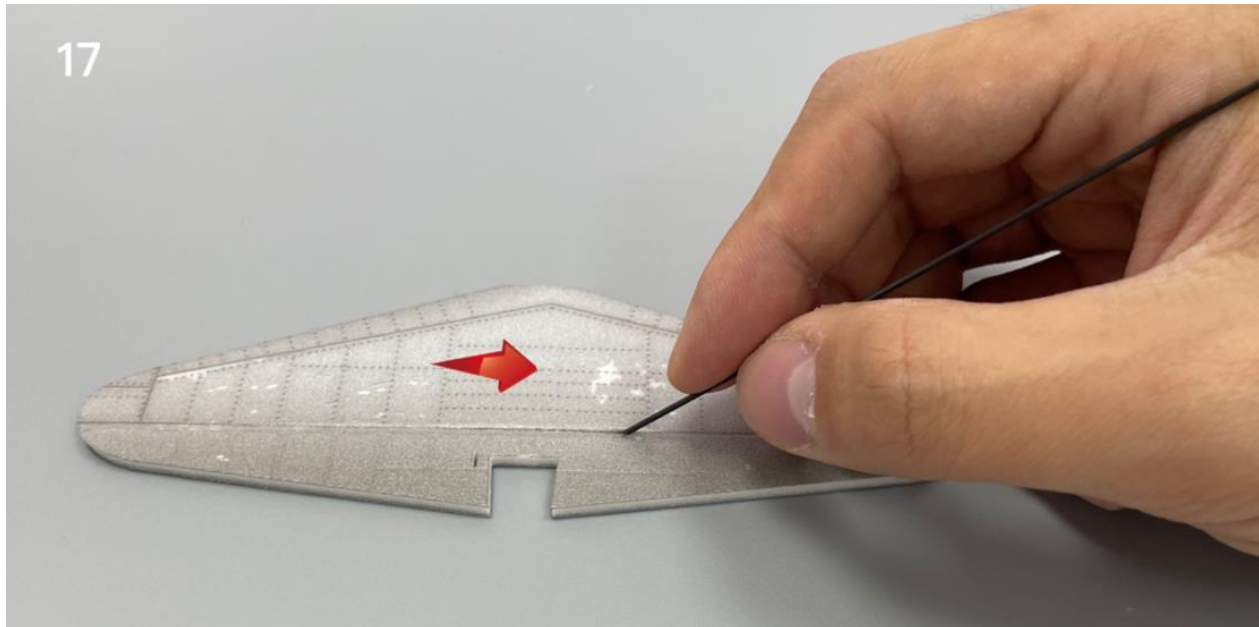
Use the end of a carbon fiber rod to score through the half-cut line of the wing surface.



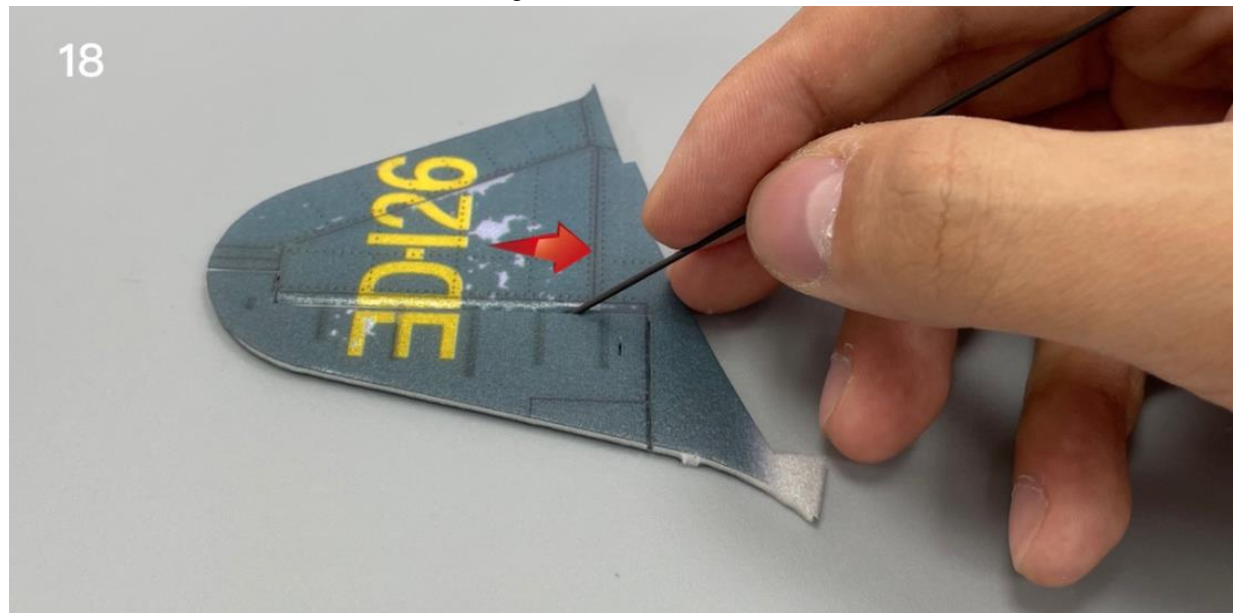
Use the end of a carbon fiber rod to score through the aileron half-cut line of the wing surface.



Use the end of a carbon fiber rod to score through the half-cut line of the tail surface.



Use the end of a carbon fiber rod to score through the half-cut line of the rudder surface.



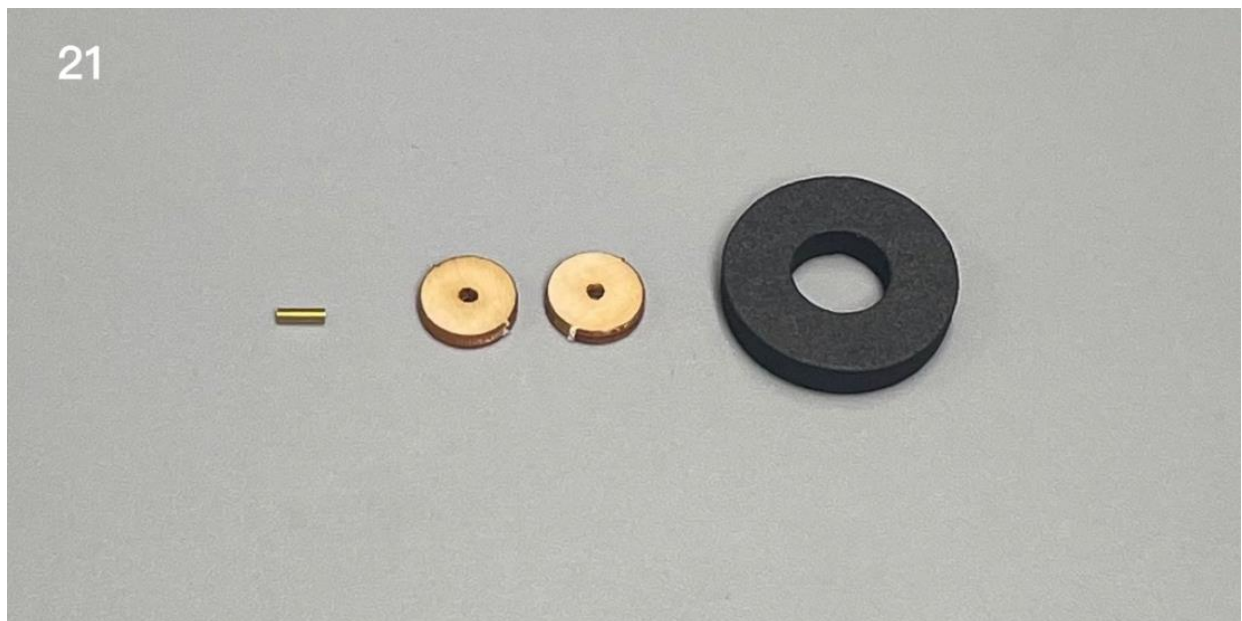
Install the tail



Attach the wings to the fuselage.



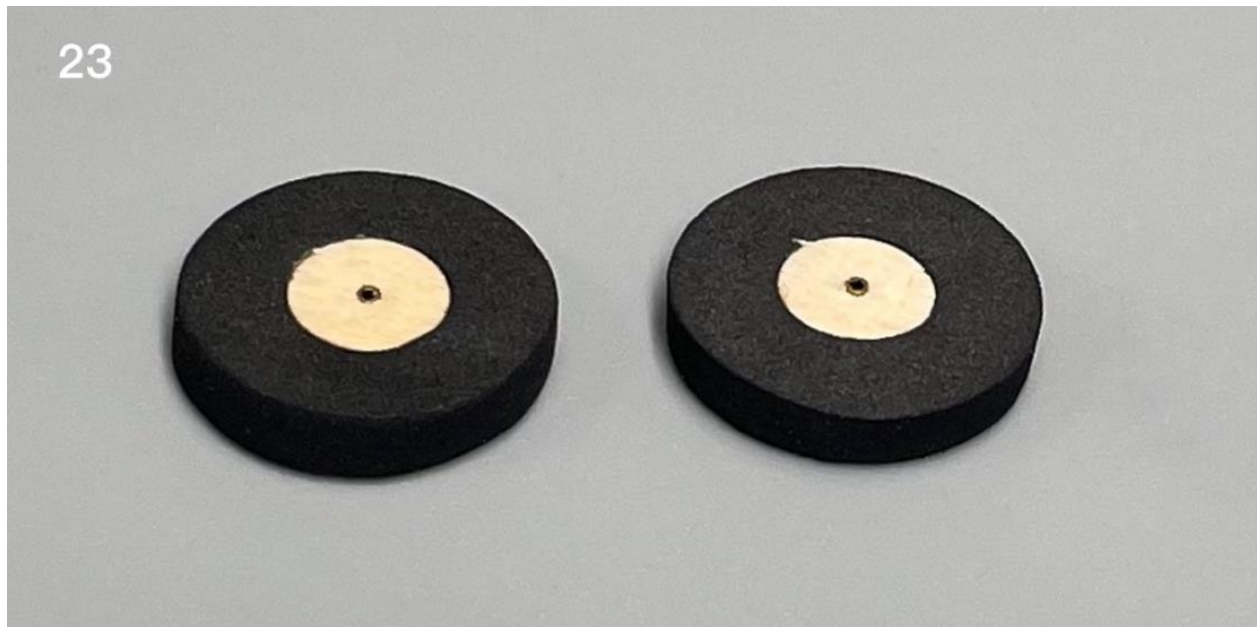
21.



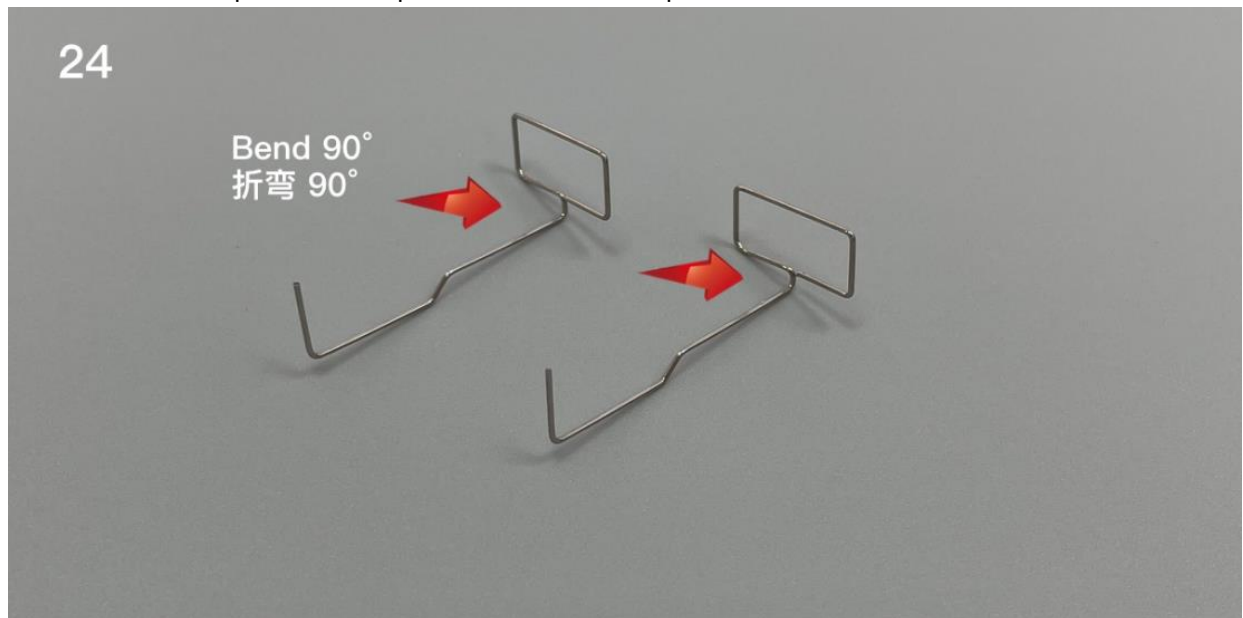
Insert the copper axle core into the center of the wood wheel core.



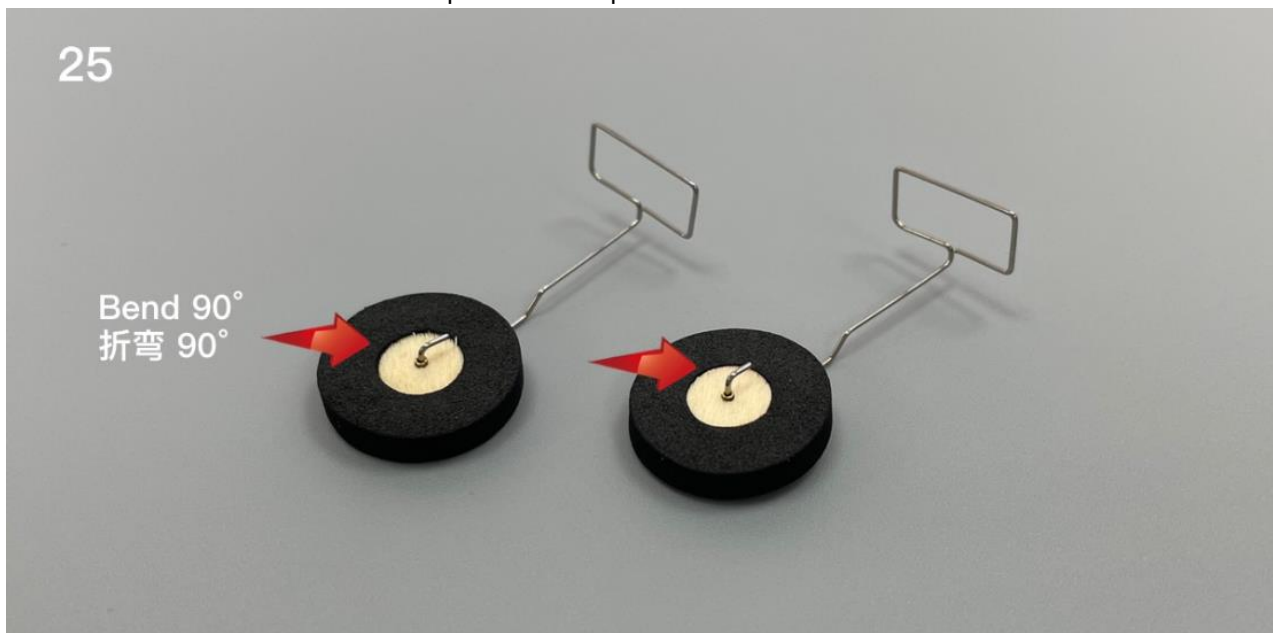
Glue the tires.



bend the steel wire with pointed nose pliers as shown in the picture.



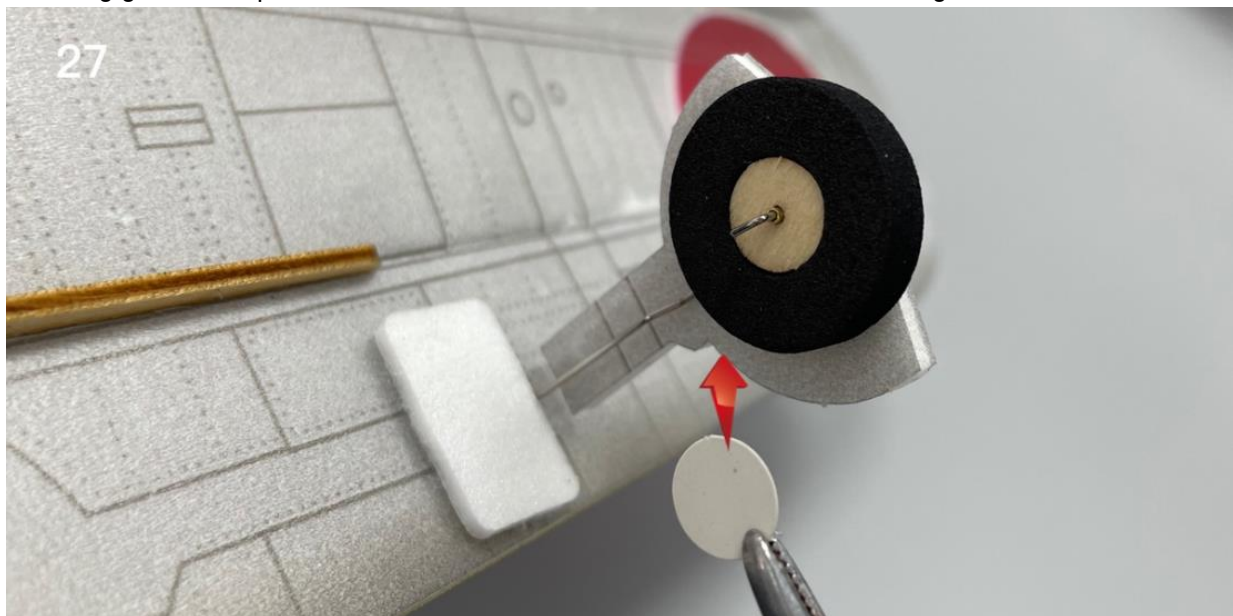
bend the outer end of the steel wire with pointed nose pliers.



Install the landing gears.



Fix the landing gear cover plate with circular stickers, which can be reinforced with glue.



Install dummy fuel tank.



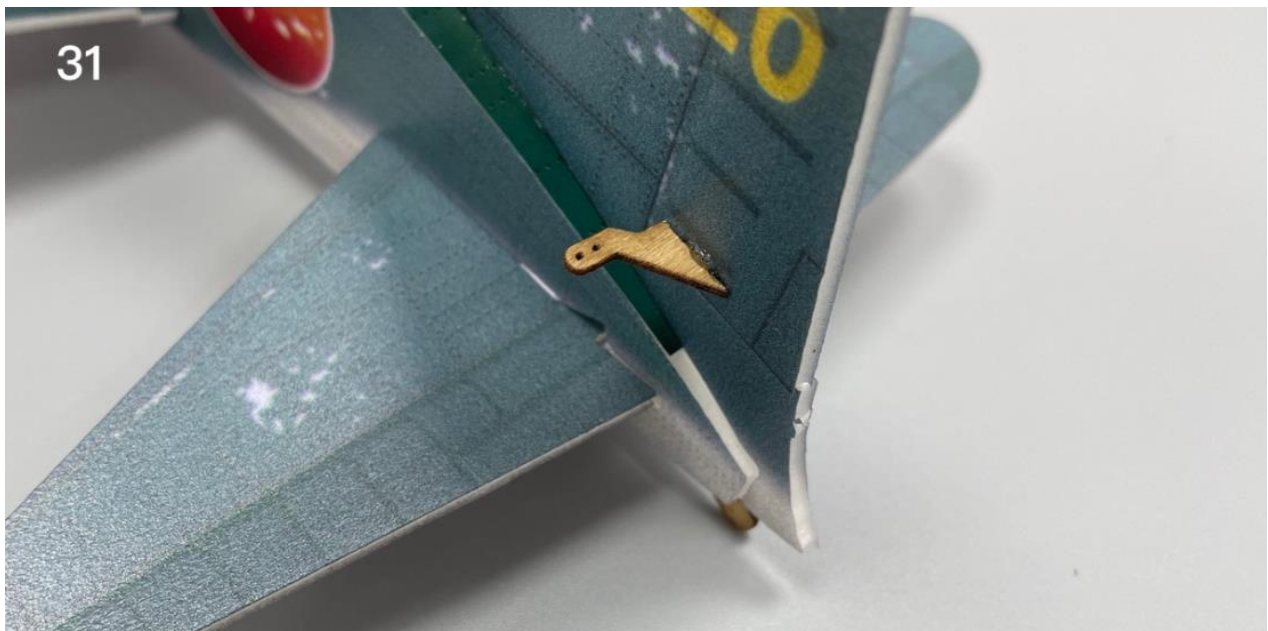
Install tail landing gear.



Install aileron control horns.



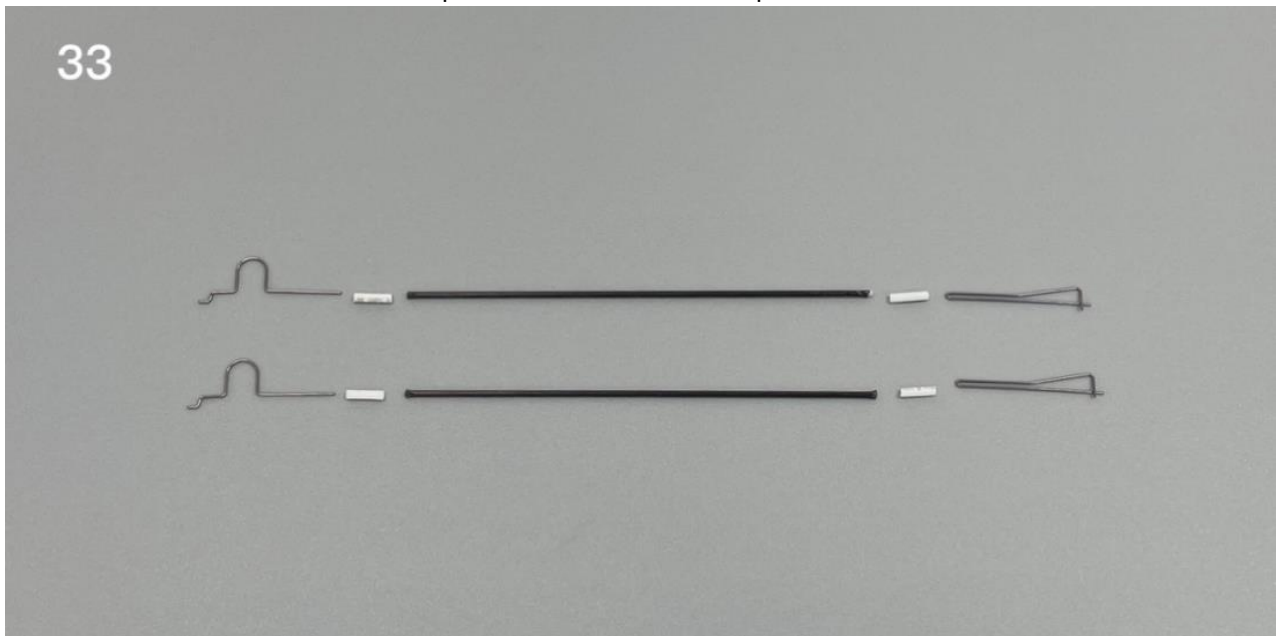
Install rudder control horns.



Install elevator control horns.



Use heat shrinkable tube to connect tail push rod and steel wire clip.



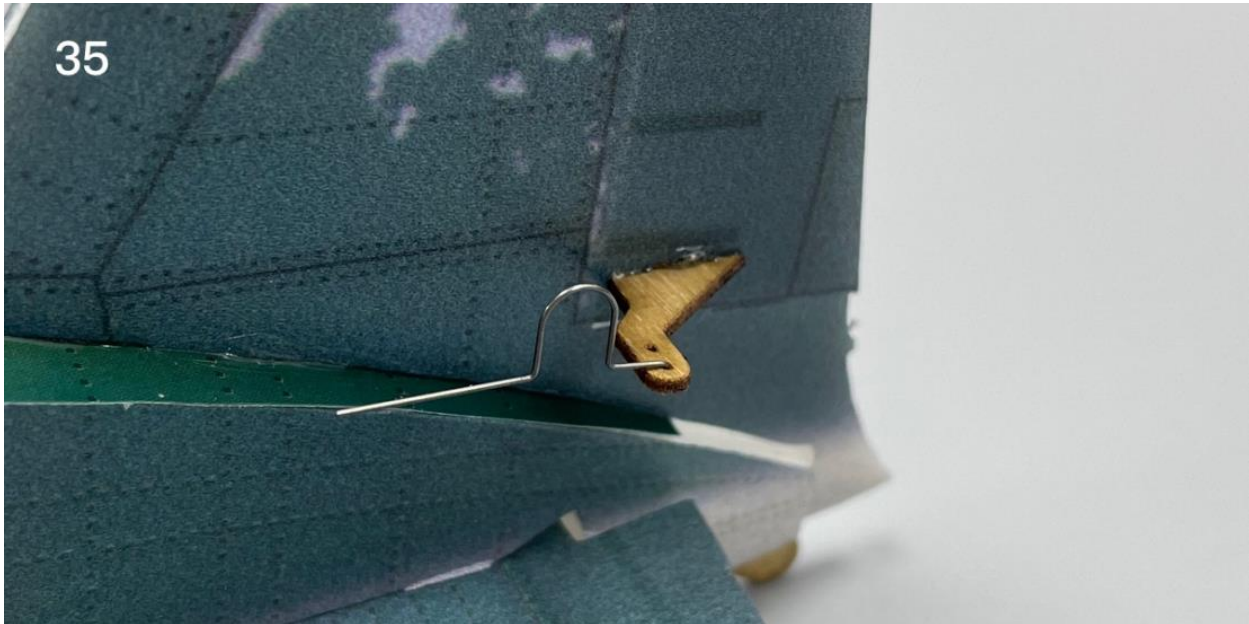
Use heat shrinkable tube to connect the pull rod and wire clip, then use glue to fix them.

34



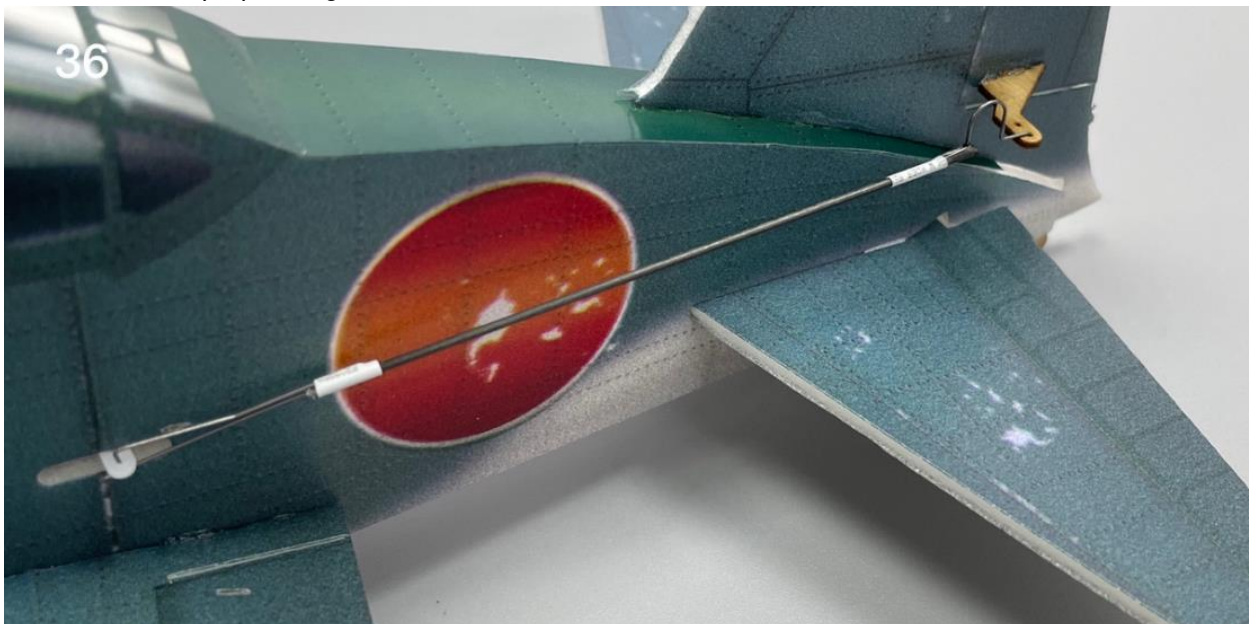
Attach the steel wire hooks to the control horns.

35

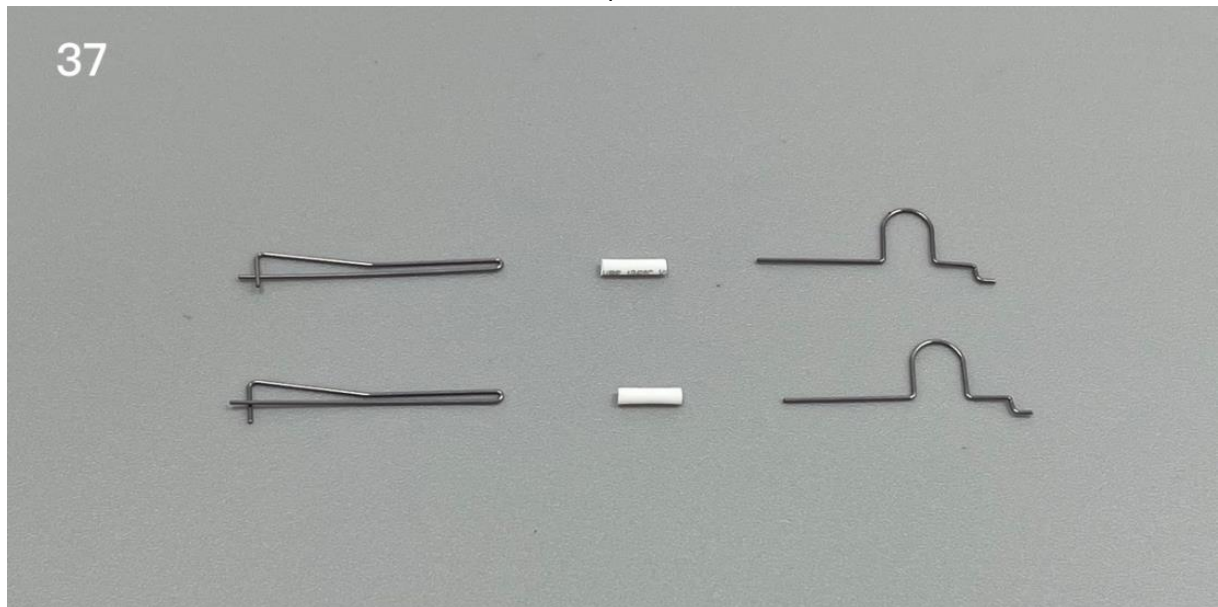


cut the carbon rod to proper length and connect the wire hooks with heat shrinkable tubes.

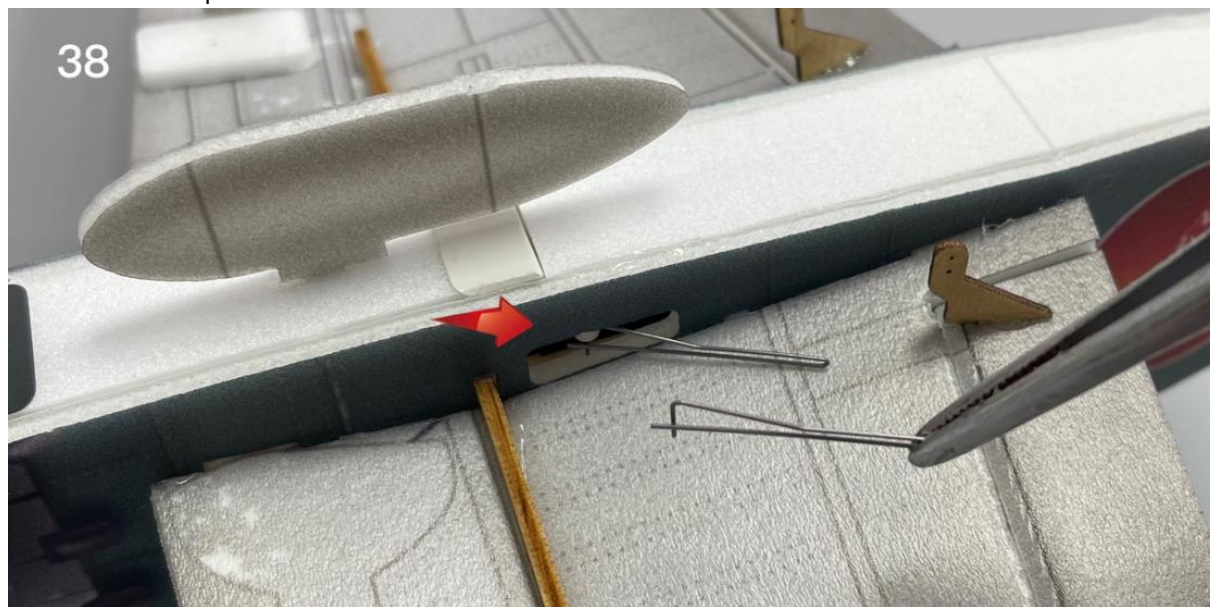
36



Use heat shrinkable tube to connect aileron steel wire clips.



Attach the steel wire clip to the aileron servo arm.



Connect the wire hooks with heat shrinkable tubes.



Paste the carbon fiber rod at the broken line at the bottom of the wing to increase the strength.



The battery is directly placed in the battery compartment.



Optional accessories: pilot. Cut off the cockpit cover along the scribed line and install the pilot base and pilot.

Note: the installation pilot will change the vertical center of gravity of the aircraft. It is recommended to remove the pilot during flight.



Assembly complete!



Maiden flight

- The center of gravity of the aircraft is located at the front score line of the wing.
- The active range of ailerons, elevator and rudder is 5mm on both sides.
- choose grass land for maiden flight.

Documents / Resources



Manuals+,