



minifinder Pico Lite GPS Tracker User Guide

[Home](#) » [minifinder](#) » minifinder Pico Lite GPS Tracker User Guide 

minifinder

**Mini Finder® Pico Lite
Quick Guide
Real-Time Tracking via Mini Finder GO**



Contents

[1 INTRODUCTION](#)

[2 Hardware Overview](#)

[3 DEVICE REGISTRATION](#)

[4 REAL-TIME TRACKING VIA MINIFINDER GO](#)

[5 OTHER INFORMATION](#)

[6 Mini Finder ® Pico Lite & GO User Manual](#)

[7 MiniFinder GO Quick Guide](#)

[8 Documents / Resources](#)

[8.1 References](#)

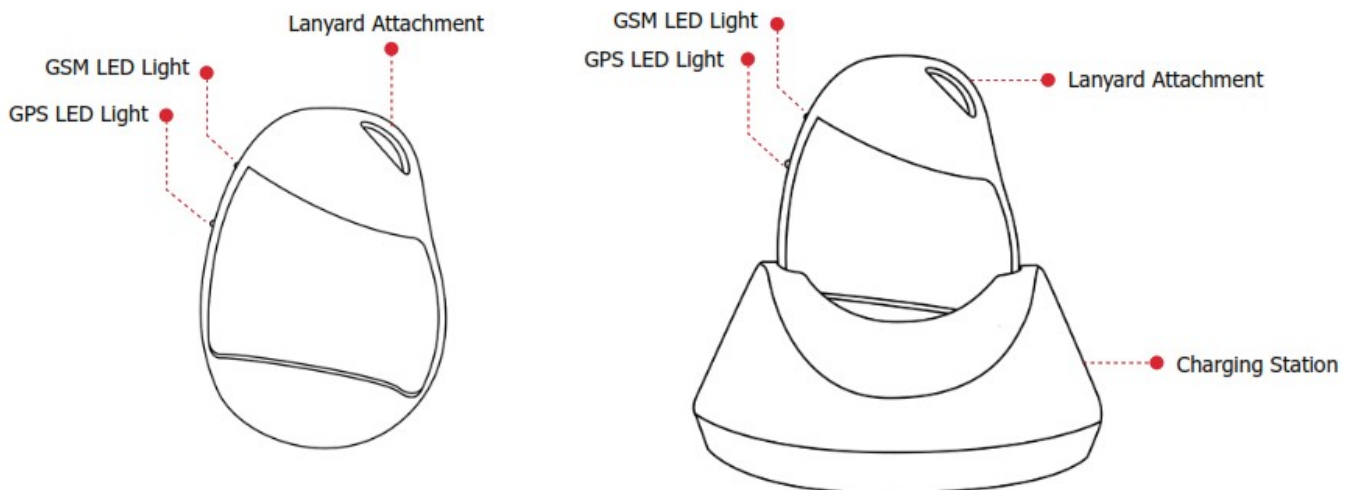
[9 Related Posts](#)

INTRODUCTION

The goal of this quick guide is to help you get started with your MiniFinder ® Pico Lite and live tracking of your asset via MiniFinder GO Tracking System in the shortest possible time.

Before using for the first time, charge your device for 4h. Next time it is fully charged after 2h.

The device is charged through the supplied charging station. Connect the charging station to a power source via the supplied USB cable and power adapter. Place the MiniFinder Pico Lite in the charging station to start charging. See picture below:



Hardware Overview

The following image describes the different parts of the unit. NOTE! The device comes with a preinstalled SIM-card.



NOTE! If you have received a login information for the APP from MiniFinder, please skip the device registration steps 1 and 2 below.

DEVICE REGISTRATION

1. Please go to my.minifinder.com to create your account and activate your device.







Choose “MiniFinder Pico”, highlighted in the image below, when register your device.

Register your MiniFinder

Your e-mail

Device Type



IMEI number

Password

Repeat Password

PACKAGE

LET'S GO

2. Before starting the tracking for the first time, please make sure to place the device outdoors for 3-5 minutes for faster fixing against GPS satellites. Start the device by plugging it into the charger.

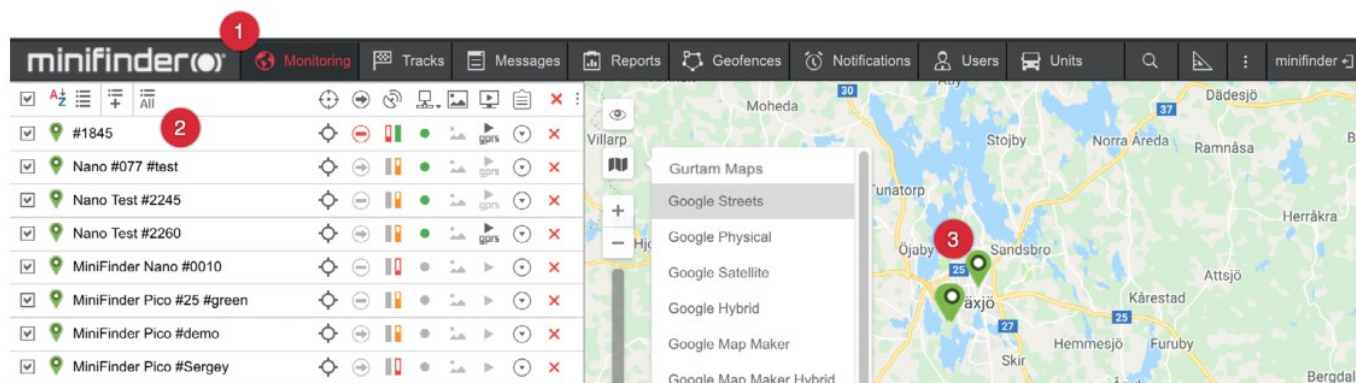
REAL-TIME TRACKING VIA MINIFINDER GO

After subscribing to MiniFinder GO tracking service, you can log in to go.minifinder.com with your login details or download the MiniFinder GO app from the Apple App Store or Google Play. Start the app or open your browser to log in.



Here is how to track through web browsers on your computer:

Select (1) Monitoring in the top menu and (2) then click on your device to display its live position on the map.



For more information about the various parts and functions of the map, please see “MiniFinder GO Quick Guide” that you have received along with the login information.

OTHER INFORMATION

At the low battery level (about 20% remaining time), Pico Lite will send an SMS to your mobile phone.

Mini Finder ® Pico Lite & GO User Manual

For more functions and commands, please download the complete user manual:

[minifinder-pico-lite_minifinder-go_user_guide-en](#)

MiniFinder GO Quick Guide

To get started with live tracking, please read “MiniFinder GO Quick Guide”:

[minifinder-go_quick_guide-en](#)

minifinder®

Support:

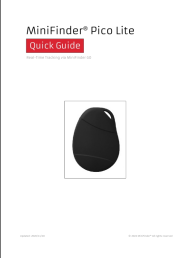
support@minifinder.com

Telephone:

+46(0)470-786833

Website:

Documents / Resources

	<p>minifinder Pico Lite GPS Tracker [pdf] User Guide Pico Lite, Pico Lite GPS Tracker, GPS Tracker, Tracker</p>
---	---

References

-  [MiniFinder](#)
-  [Activate your MiniFinder](#)
-  [MiniFinder | GPS Tracker - Safe personal alarm in GPS tracking device](#)