

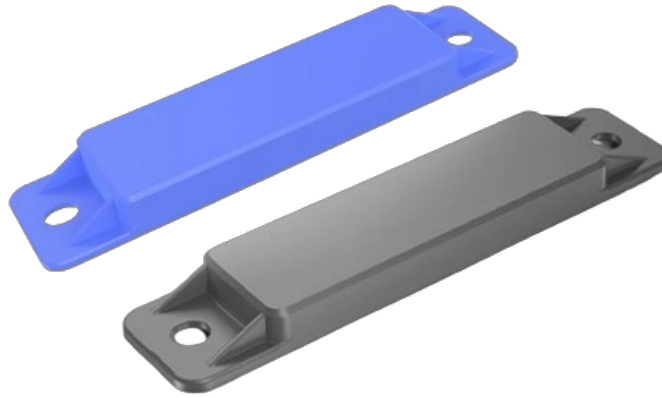


Contents [[hide](#)]

- 1 MINEW MTB07 Bluetooth Pallet Tracker
- 2 PRODUCT OVERVIEW
- 3 KEY FEATURES
- 4 APPLICATION SCENARIOS
- 5 PRODUCT SPECIFICATIONS
- 6 DEVICE OPERATIONS
- 7 PRECAUTIONS
- 8 CERTIFICATIONS
- 9 PACKAGING INFORMATION
- 10 QUALITY ASSURANCE
- 11 DECLARATION
- 12 Documents / Resources
 - 12.1 References
- 13 Related Posts



MINEW MTB07 Bluetooth Pallet Tracker



PRODUCT OVERVIEW

MTB07 is the latest generation of Pallet Tracker developed by Minew, which is mainly used for tracking and managing the location and usage status of assets such as pallets, trailers, containers, and other assets in logistics, supply chain, warehousing and other scenarios. Adopting the advanced Bluetooth chip to ensure low-power consumption broadcasting. Moreover, equipped with a larger capacity battery, the endurance is up to 5 years or more, saving end-application maintenance time and cost after deployment. In addition, due to the use of hard and sturdy materials and a high sealing manufacturing process, the tracker can reach IP67 and IK08 waterproof and shockproof ratings, respectively, which can be applied in some of the more demanding and complex scenarios.



[View Now](#)

KEY FEATURES



5 Years
Service Life



IP67 Waterproof
& Dustproof



IK08
Shockproof



120 m Broadcast
Range



Superior RF
Performance



Multi-color
Design

APPLICATION SCENARIOS



Pallets Tracking



Trailers Tracking



Containers Tracking



Logistic Basket Tracking

PRODUCT SPECIFICATIONS

BASIC SPECIFICATIONS

- Material ABS+PC /
- Color Blue/Black Customizable
- Size 116.5*30.5* 11mm /
- Weight 34.1g /
- Configuration app BeaconSET + /
- Deployment options 3M/screws/zip ties /

TECHNICAL SPECIFICATIONS

Chip	nRF52 series	/
Battery capacity	CR2450 packs, 1200 mAh	CR2032 packs optional
Services life	5 years (default setting)	Configurable
Protection	IP67/IK08	/
Sensor	Magnetron	Accelerometer optional
LED	Blue	/
Bluetooth protocols supported	Bluetooth® LE 5.0	/
Broadcast interval	Default 2000ms	Configurable, 100 ms ~ 5000 ms
Broadcast range	120 m (open area)	/
OTA	Not supported	/
Configuration App	BeaconSET +	/
Working temperature range	-20 °C ~ 60°C	/
Working humidity range	0 – 95 % RH, non-condensing	/
Security	Supports changing passwords, anti-malicious connection	/

SUPPORTED SYSTEMS SUPPORTED MODELS

iOS 10.0 and above iPhone6 /6 Plus /6S/ 6S Plus /7 /7 Plus /8 /8 Plus / x /xr /xs /xs max /SE /SE2 / 11 / 11 pro /11 pro max

Android 4 .3 and above Samsung,Xiaomi,Google Pixel,Honor, OnePlus, Huawei, etc.

DEVICE OPERATIONS



ON Power-on:

press the button in the middle of the device for 3 .6 seconds until the blue light on.



OFF Power-off: the standard one can only be turned off by BeaconSET + App. The blue light will flash 5 times when the device is off.



Parameters configurable:

1. Turn on BeaconSET + App.
2. Choosing the device according to the MAC address.
3. Enter the password of“ minew123 ” , and the page to configure the parameters as wished.



App connection: the device's blue light will flash two times when connecting normally.



App disconnection:

the device's blue light will flash three times when disconnecting.

PRECAUTIONS

- It is recommended to set lower transmitting power and longer broadcast intervals to achieve a longer service life.
- It is not recommended to install the device on a surface which facing a high shock directly even though it has passed a certain shockproof level.
- Avoid being exposed to direct sunlight for an extended period to mitigate shell aging risk.
- Do not use the product over the recommended working temperature to avoid damage. It is recommended that to store the product in a normal temperature environment (20°C ~ 30°C) when not use.
- Minew will not be responsible for any damage or injury caused by disassembling the

main casing without appropriate operations.

- If you have any other questions, please contact our sales team or technical support team.

CERTIFICATIONS



* **Note:** The certification code can be provided if needed , please contact our sales team or technical support team for relevant information .

This device complies with part 15 of the FCC Rules. Operation is subject to the following two conditions:

1. This device may not cause harmful interference , and
2. This device must accept any interference received, including interference that may cause undesired operation.

FCC warning: Any Changes or modifications not expressly approved by the party responsible for compliance could void the user's authority to operate the equipment.

Note: This equipment has been tested and found to comply with the limits for a Class B digital device, pursuant to part 15 of the FCC Rules. These limits are designed to provide reasonable protection against harmful interference in a residential installation.

This equipment generates uses and can radiate radio frequency energy and, if not installed and used in accordance with the instructions, may cause harmful interference to radio communications . However, there is no guarantee that interference will not occur in a particular installation . If this equipment does cause harmful interference to radio or television reception, which can be determined by turning the equipment off and on, the user is encour-aged to try to correct the interference by one or more of the following measures:

- Reorient or relocate the receiving antenna.
- Increase the separation between the equipment and receiver.
- Connect the equipment into an outlet on a circuit different from that to which the

receiver is connected.

- Consult the dealer or an experienced radio/TV technician for help.

This equipment complies with FCC radiation exposure limits set forth for an uncontrolled environment. This equipment should be installed and operated with minimum distance 20cm between the radiator & your body.

PACKAGING INFORMATION

Details		Outer carton(battery included)	
Picture			
Quantity		456 pcs	
Size		32 x 23.5 x 40 cm	
Gross weight		19.1 kg	

QUALITY ASSURANCE

The factory has already obtained the certification of ISO9001 Quality System. Each product has been strictly tested (tests include transmission power, sensitivity, power consumption, stability, aging, etc.).

Warranty Period: 12 months from the date of shipping (Battery and other accessories excluded).

DECLARATION

Statement of Rights:

The contents of this manual belong to the Manufacturer of Minew Technologies Co., LTD, Shenzhen, and are protected by Chinese laws and applicable international conventions related to copyright laws. The contents can be revised by the company according to the technological development without prior notice. Anyone, companies, or organizations cannot modify the contents and cite the contents of this manual without

Minew's permission, otherwise, Violators will be held accountable according to law.

Disclaimer:

Minew team reserves the right to the final explanation of the document and product differences. The Minew group is not responsible for liability of property or personal injury with the wrong operation if users develop related products without checking the technical specifications of this manual.


SHENZHEN MINEW TECHNOLOGIES CO., LTD.

- www.minew.com
- info@minew.com
- www.minewstore.com

Minew Technologies



Documents / Resources

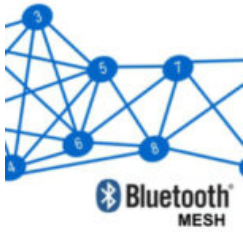
	<p>MINEW MTB07 Bluetooth Pallet Tracker [pdf] Owner's Manual</p> <p>2ABU6-MTB07, 2ABU6MTB07, mtb07, MTB07 Bluetooth Pallet Tracker, MTB07, Bluetooth Pallet Tracker, Pallet Tracker, Tracker</p>
---	--

References

- [User Manual](#)

Related Posts

[Bluetooth Mesh Networking User Manual](#)



Bluetooth Mesh Networking User Manual - Optimized
PDF Bluetooth Mesh Networking User Manual - Original
PDF



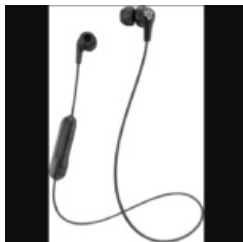
[COREDY HW04 Bluetooth Tracker Instructions](#)

COREDY HW04 Bluetooth Tracker Where is the battery located? Position the Apple Find My badge with the face...



[Onn. Bluetooth Item Tracker Instruction Manual](#)

Onn. Bluetooth Item Tracker Instruction Manual 01.
Getting Started 1. Download and Install the App: Google
Play Apple...



[JLab Bluetooth Earbuds User Manual](#)

JLab Bluetooth Earbuds User Manual Email:
Support@jlabaudio.com or Visit Jlabaudio.com JLab
Bluetooth Earbuds User Manual - Optimized PDF...

MINEW

2ABU6-MTB07, 2ABU6MTB07, Bluetooth Pallet Tracker, MINEW, mtb07, MTB07 Bluetooth Pallet Tracker, Pallet Tracker, Tracker

—Previous Post

[MINEW 2ABU6I9 Coin Tag LE for Asset and Personnel Tracking Instructions](#)

Next Post—

[MINEW MSR01 Millimeter Wave Radar Sensor User Guide](#)

Leave a comment

Your email address will not be published. Required fields are marked *

Comment *

Name

Email

Website

☐ Save my name, email, and website in this browser for the next time I comment.

Post Comment

Search:

e.g. whirlpool wrf535swhz

Search

[Manuals+](#) | [Upload](#) | [Deep Search](#) | [Privacy Policy](#) | [@manuals.plus](#) | [YouTube](#)

This website is an independent publication and is neither affiliated with nor endorsed by any of the trademark owners. The "Bluetooth®" word mark and logos are registered trademarks owned by Bluetooth SIG, Inc. The "Wi-Fi®" word mark and logos are registered trademarks owned by the Wi-Fi Alliance. Any use of these marks on this website does not imply any affiliation with or endorsement.