



**Contents** [ [hide](#) ]

- [1 Minetom 33-ft Globe String Lights](#)
- [2 INTRODUCTION](#)
- [3 SPECIFICATIONS](#)
- [4 WHAT'S IN THE BOX](#)
- [5 FEATURES](#)
- [6 SETUP GUIDE](#)
- [7 CARE & MAINTENANCE](#)
- [8 TROUBLESHOOTING](#)
- [9 PROS & CONS](#)
- [10 WARRANTY](#)
- [11 FREQUENTLY ASKED QUESTIONS](#)
- [12 References](#)



## Minetom 33-ft Globe String Lights



## INTRODUCTION

With 100 tiny globe LEDs, the Minetom 33-foot USB Globe String Lights, which retail for **\$18.99**, provide colorful, adjustable illumination. These USB-powered lights have 16 solid color settings, 7 multicolor settings, a timer, and a remote control. They're perfect for patios, tents, beds, dorm rooms, and seasonal décor. They provide uniform illumination over the span at a distance of around 4 inches. With a 20,000-hour lifespan and IP44 splash-proof protection, these lights are made to last and are ideal for both indoor and covered outdoor settings. Use a variety of hues to add flair to your room for Christmas, parties, or ambient lighting.

## SPECIFICATIONS

Brand	Minetom
Model	33-ft USB Globe String Lights

Price	\$18.99
Length	33 ft (≈10 m)
LED Count	100 globes
LED Spacing	~4 inches
Colors	16 solid + 7 multicolor modes
Lifespan	20,000 hours
Power Source	USB-powered (5 V)
Waterproof Rating	IP44 (splash-proof)
Remote Control	Included (mode, color, timer, brightness)
Timer	6h ON / 18h OFF daily cycle
Wire	Clear PVC
Globe Material	Plastic, ~0.7-inch diameter
Indoor/Outdoor Usage	Indoor / sheltered outdoor
Warranty	1-year manufacturer support

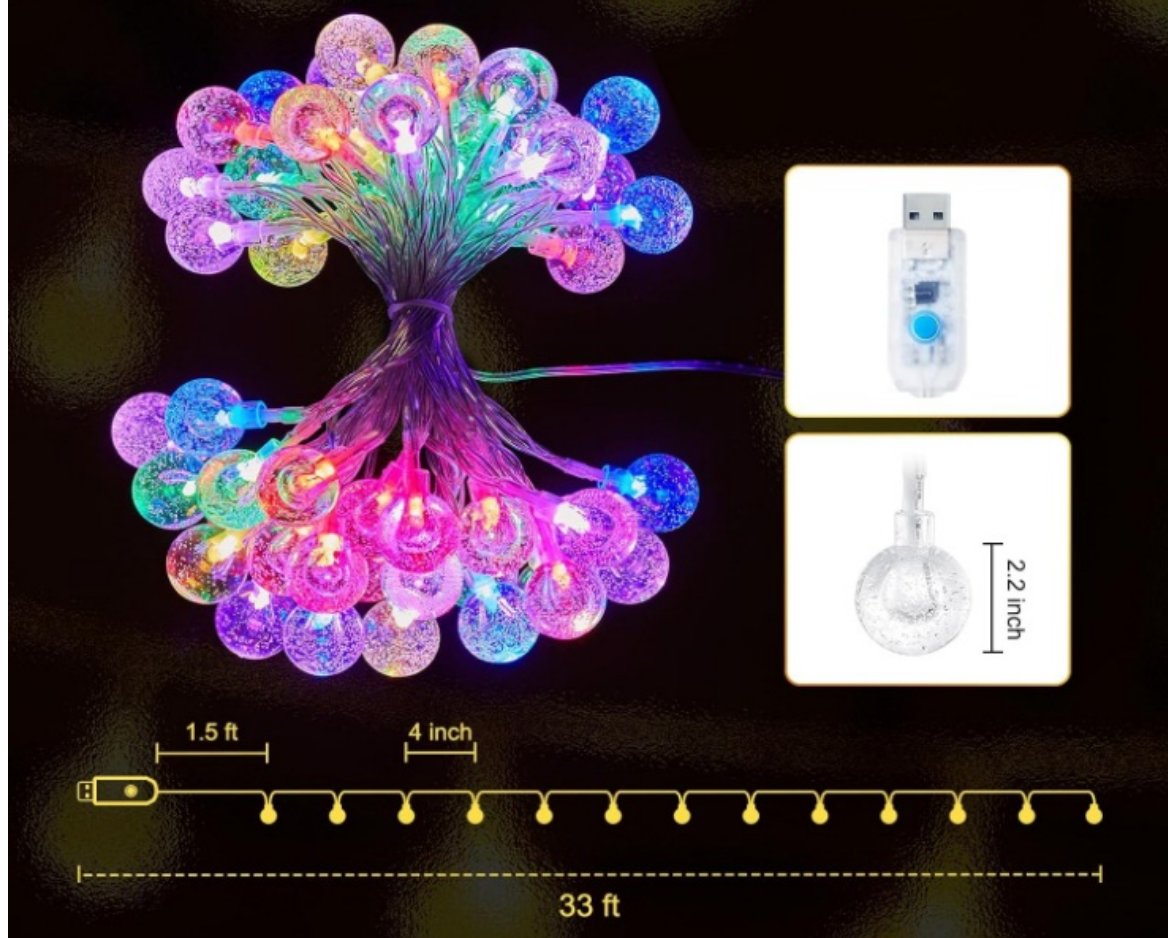
## WHAT'S IN THE BOX

- 1 × 33-ft Minetom USB Globe String Lights
- 1 × USB power cord & AC adapter
- 1 × Remote control
- 1 × User manual

## FEATURES

- **Power Source:** USB-powered, making it easy to set up anywhere with a USB port.
- **Light Count & Length:** Includes 100 LED globe lights spaced along a 33-foot string (about 4 inches apart).

## 33 ft 100 LED USB Bubble Globe String Lights



- **Color Options:** Offers 16 solid colors and 7 multicolor display modes for versatile lighting effects.
- **Remote Access:** Comes with a remote control for simple color and brightness adjustments.





- **Timer Function:** Built-in 6-hour on and 18-hour off cycle for automatic daily use.
- **Adjustable Brightness:** Easily dim or brighten lights using the remote control.
- **LED Life:** Long-lasting LEDs rated to operate for up to 20,000 hours.
- **Water Resistance:** IP44 splash-proof design is suitable for indoor and covered outdoor areas.



- **Wire Style:** Clear wiring blends seamlessly into any decor setup.
- **Durable Build:** Shatter-resistant plastic globes add safety and longevity.
- **Cool Touch:** LEDs stay cool even after hours of use—safe to handle.
- **Memory Function:** Saves your last-used settings even after power-off or unplugging.
- **Globe Size:** Each globe measures approximately 0.7 inches in diameter.
- **Lightweight Design:** Easy to carry, hang, and reposition as needed.
- **Versatile Usage:** Great for bedrooms, parties, patios, or any protected outdoor space.



## SETUP GUIDE

- **Unpack Carefully:** Lay out the lights gently to avoid tangling.
- **Connect Power:** Plug the USB cable into a power source like a wall adapter or power bank.
- **Startup Time:** Wait around 10 seconds for the lights to initialize.
- **Remote Use:** Use the remote control to choose your desired color or lighting mode.
- **Activate Timer:** Press the “Timer” button to start the 6-hour automatic lighting cycle.
- **Adjust Light Level:** Use the dimming buttons on the remote to set your preferred brightness.
- **Hanging Method:** Use clips, hooks, or adhesive to secure the lights.
- **Even Placement:** Distribute the globes evenly across your hanging space.
- **USB Protection:** Keep the USB plug protected from water or damp conditions.
- **Settings Memory:** Lights remember your previous mode and brightness settings.
- **Covered Outdoor Use:** For outside use, make sure the setup is under a sheltered

area.

- **Cancel Timer:** Press the “Timer” button again or unplug the USB to stop the cycle.
- **Remote Storage:** Keep the remote control close to the lights for convenience.
- **Power Down:** Unplug when not in use for long periods.
- **Need Help?:** Refer to the included manual if you encounter any issues.

## CARE & MAINTENANCE

- **Unplug First:** Always disconnect from the power source before cleaning.
- **Surface Cleaning:** Wipe the globes and wiring gently with a soft, damp cloth.
- **Avoid Harsh Cleaners:** Do not use strong chemicals or detergents.
- **Visual Check:** Inspect the globes for cracks or signs of damage.
- **USB Care:** Keep the USB connector dry and clean at all times.
- **Storage Tips:** Store lights flat to prevent tangling of the wire.
- **Temperature Precautions:** Keep away from direct heat or freezing temperatures.
- **Remote Maintenance:** Replace the battery in the remote control when it stops responding.
- **Coil Properly:** Loop the string lights loosely when storing to avoid damage.
- **No Immersion:** Never submerge the lights or USB cable in water.
- **Wire Check:** Regularly inspect for frays, cuts, or other wear on the wiring.
- **Storm Safety:** Unplug during lightning storms or severe weather.
- **Eco-Friendly:** Recycle the lights and batteries according to local e-waste guidelines.
- **Child Safety:** Keep lights and remote away from small children and pets.

## TROUBLESHOOTING

Problem	Possible Cause	Solution
No response	Power not connected	Re-plug USB, ensure power supply is active
Remote not working	Battery dead or out of range	Replace battery; aim remote within ~ 10m
Timer not working	Incorrect remote usage	Press “Timer” until indicator lights



Problem	Possible Cause	Solution
LEDs flickering	Power unstable or USB t ension	Use stable power source; try different adapter
Some globes dark	LED failure or wiring brea k	Check connections; replace defective strands
Modes not cycling	Remote malfunction	Replace remote battery; reboot lights
Brightness uncha nged	Feature not selected	Use dimmer keys (“+”/“-”) on remote
Water damage	Exposed to hose or rain	Use only IP44 permitted environment s
Overheating	Too long continuous use	Turn off after 6h cycle or unplug
Wire tangling	Improper storage	Store loosely coiled

## PROS & CONS

### Pros:

- Vast color and mode options via remote
- Timer automation for daily use
- USB powered and flexible placement
- Splash-proof for sheltered outdoor use
- Long lifespan and memory function

### Cons:

- Must remain near USB power source
- Not rated for full outdoor exposure
- Remote range limited (~10m line-of-sight)
- Plastic globes less premium than glass
- Requires remote battery replacement

## WARRANTY

Minetom offers a **1-year** support policy covering defects and performance issues. Backed by Amazon's 30-day return window and direct customer service, users can request replacements or refunds if problems arise

## FREQUENTLY ASKED QUESTIONS

How long is the Minetom 33-ft Globe String Light and how many LEDs does it have?

The Minetom RGB-Globe light strand is 33 feet long with 100 LED globe bulbs, spaced 4 inches apart.

What power source is required for the Minetom RGB-Globe string lights?

These lights are USB powered, meaning you can plug them into a USB adapter, power bank, computer, or USB wall charger.

How many colors can the Minetom RGB-Globe string lights display?

They offer 16 solid colors and 7 multicolor modes, allowing endless customization for any occasion.

Are these string lights waterproof or outdoor-safe?

These are designed for indoor use. If used outdoors, ensure they are protected from moisture and direct water contact, as the USB plug is not waterproof.

What is the estimated lifespan of the Minetom 100 LED Globe Lights?

The LEDs have a rated lifespan of 20,000 hours, offering years of reliable decorative lighting.

How are the globe bulbs designed?


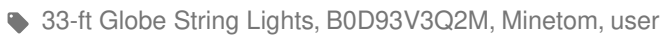
Each LED is encased in a small, round frosted globe, providing a soft, diffused glow that enhances ambiance.

Why aren't my Minetom RGB-Globe lights turning on when plugged into USB?

Ensure the USB power source is active and the cable is firmly connected. Try plugging it into another USB port or adapter.

## References

- [User Manual](#)

 Minetom  33-ft Globe String Lights, B0D93V3Q2M, Minetom, user guide

---

## Leave a comment

Your email address will not be published. Required fields are marked \*

Comment \*

Name

Email

Website

☐ Save my name, email, and website in this browser for the next time I comment.

**Post Comment**

**Search:**

**Search**

[Manuals+](#) | [Upload](#) | [Deep Search](#) | [Privacy Policy](#) | [@manuals.plus](#) | [YouTube](#)

This website is an independent publication and is neither affiliated with nor endorsed by any of the trademark owners. The "Bluetooth®" word mark and logos are registered trademarks owned by Bluetooth SIG, Inc. The "Wi-Fi®" word mark and logos are registered trademarks owned by the Wi-Fi Alliance. Any use of these marks on this website does not imply any affiliation with or endorsement.