



## **MINELAB MANTICORE Metal Detector User Guide**

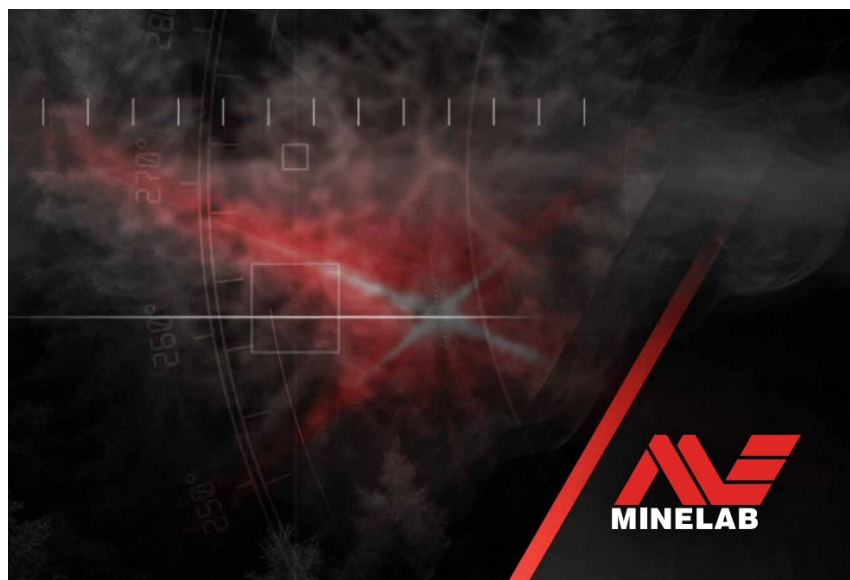
[Home](#) » [MINELAB](#) » MINELAB MANTICORE Metal Detector User Guide 



### **Contents**

- 1 GETTING STARTED GUIDE**
- 2 QUICK START**
- 3 SEARCH MODES**
- 4 ASSEMBLY**
  - 4.1 TIGHTEN CAMLOCKS**
- 5 CHARGING**
- 6 CONTROLS & DISPLAY**
  - 6.1 SETTINGS MENU**
- 7 Documents / Resources**
- 8 Related Posts**

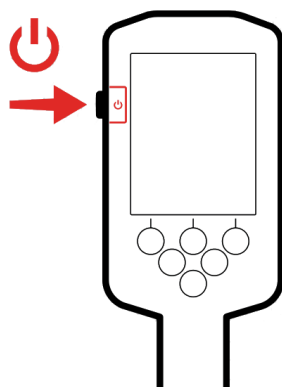
**GETTING STARTED GUIDE**



## QUICK START

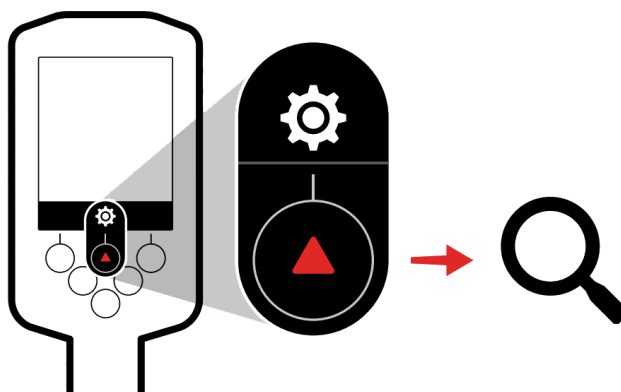
1

TURN ON



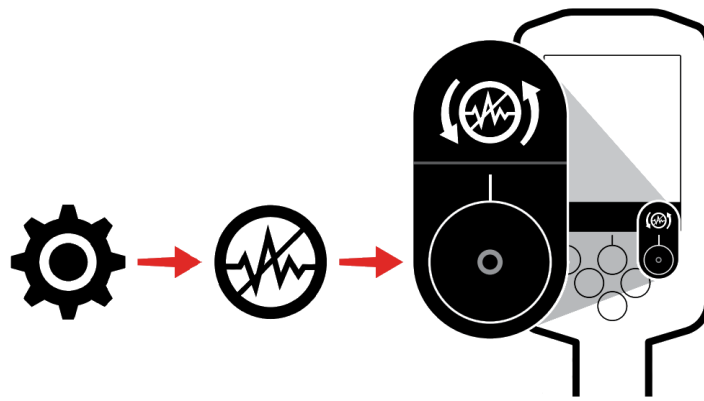
2

SELECT SEARCH MODE



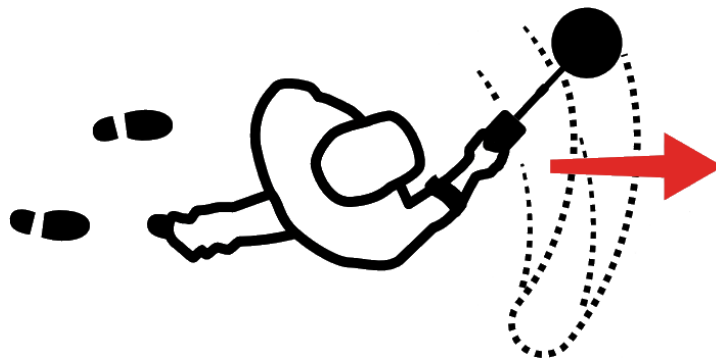
3

NOISE CANCEL



4

GO DETECTING

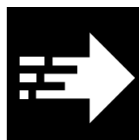
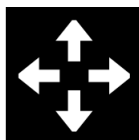


## SEARCH MODES



### ALL-TERRAIN

Great for high-trash recreational areas, fields and historical locations including most general detecting.



GENERAL FAST

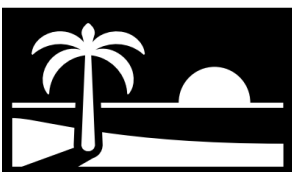
LOW CONDUCTORS



HIGH CONDUCTORS

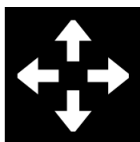


TRASH REJECT



### BEACH

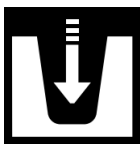
Perfect for all salty conditions – dry sand, wet sand, surf and underwater.



GENERAL



LOW CONDUCTORS



DEEP

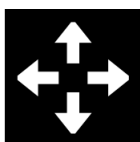


SURF & SEAWATER



### GOLDFIELD

Ideal for gold nugget prospecting in mineralised goldfield locations.



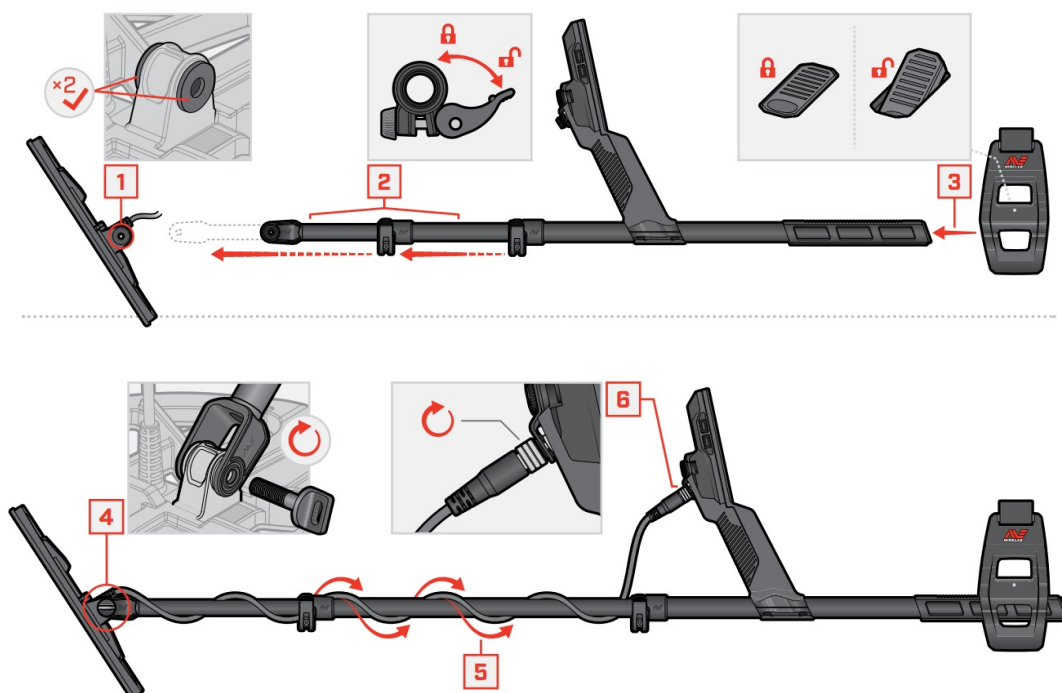
GENERAL

### Can't decide which Mode to use?

Use the General Mode for your detecting location.



### ASSEMBLY



## TIGHTEN CAMLOCKS

Tighten the Camlocks if they slip or become loose.



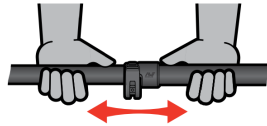
Open



Tighten gently in increments



Close

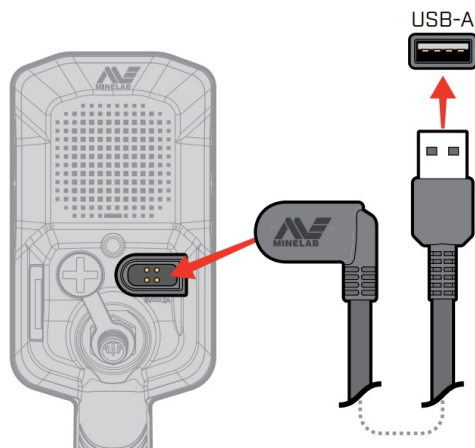


Check and repeat if needed

## CHARGING



7-8 HOURS



**CAUTION:** Charge your detector with a good-quality USB charger that has a minimum charging capacity of 2A @ 5V. Risk of USB charger failure if a low-quality charger is used.

Look for the following marks on USB chargers:



**CAUTION:** Only charge the detector in ambient temperatures between 0°C and +40°C.



3 HOURS

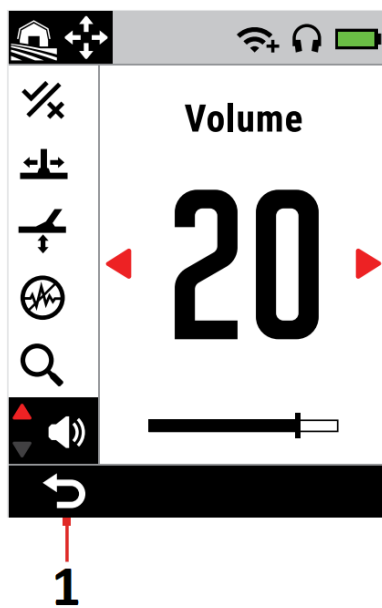


## CONTROLS & DISPLAY






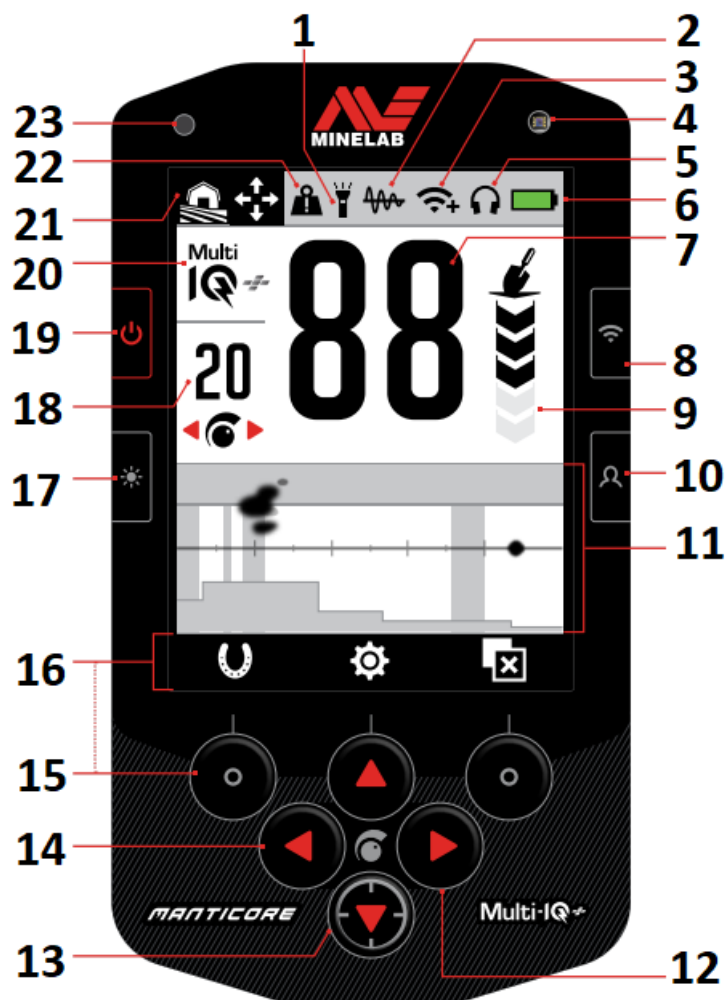
### SETTINGS MENU

Press ▲ from the Detect Screen to open the Settings menu.



1 Back

-  General Settings
-  Frequency
-  Audio Theme
-  Target Tones
-  Ferrous Tones
-  Ferrous Limits
-  Discrimination Pattern
-  Recovery Speed
-  Ground Balance
-  Noise Cancel



- 1 Flashlight
- 2 Tracking Ground Balance
- 3 Wireless Audio
- 4 Light Sensor
- 5 Headphones Connectivity
- 6 Battery Level/Charging

## 7 Target ID Number

88

88

Conductive ID      Conductive ID with Ferrous Indicator

00

Salt Indicator (Beach Modes only)

### 10 Side Soft Key

Figure 1: Schematic representation of the experimental setup. The diagram shows a horizontal axis labeled 'e)' and a vertical axis labeled 'f)'. A horizontal line is labeled 'g)'. Four points are marked on the horizontal axis: (a) is a small black dot at the left end; (b) is a small black dot at the left end; (c) is a small black dot at the right end; (d) is a small black dot at the right end. Red arrows point from labels 'a)', 'b)', 'c)', and 'd)' to these points. The horizontal axis has a '0' at the left end and a '99' at the right end. The vertical axis has a 'f)' at the top and a 'f)' at the bottom. A horizontal line is labeled 'g)'.

- a) Ferrous Limits**
- b) Target Trace (e.g. nail)**
- c) Discrimination Pattern**
- d) Target Trace (e.g. coin)**
- e) Target ID Scale Conductivity**
- f) More Ferrous**
- g) Less Ferrous**

### 23 Charge Status LED





Scan the QR code or visit [www.minelab.com/manticore](http://www.minelab.com/manticore) for all product downloads including the full-length User Manual, specifications, software updates and learning resources.



Get these languages and more:

EN English    FR français    PT Português  
DE Deutsch    JP    RU русский  
ES Español    KO    ZH

**For product compliance information:**



Settings >



General Settings >



Compliance

[minelab.com](http://minelab.com)

4901-0315-1

**Documents / Resources**

[MINELAB MANTICORE Metal Detector](#) [pdf] User Guide  
MANTICORE, Metal Detector, MANTICORE Metal Detector, Detector