



MINELAB F3 UXO Detector User Manual

[Home](#) » [MINELAB](#) » MINELAB F3 UXO Detector User Manual 

Contents

- [1 MINELAB F3 UXO Detector](#)
- [2 Product Information](#)
- [3 Product Usage Instructions](#)
- [4 Operation](#)
- [5 F3 UXO Configuration](#)
- [6 Guide Arm Assembly](#)
- [7 F3 Endcap Guide](#)
- [8 Documents / Resources](#)
- [9 Related Posts](#)



MINELAB F3 UXO Detector



Product Information

The F3 UXO Detector is a specialized device designed for the detection of unexploded ordnance (UXO). It is equipped with various features and components to ensure accurate and efficient detection in different field conditions. The detector comes with a Field Guide, Interchange Procedure, and Operations Manual for easy reference and understanding of its operation. It also includes an Earset for audio feedback during detection. The F3 UXO Detector has customizable settings that can be adjusted via a PC connection. This allows users to fine-tune the detector's sensitivity and other parameters to suit their specific needs. The detector is equipped with different endcaps for different sensitivity levels. The default endcap is the Black High Sensitivity endcap, but users can also use the Red or Yellow endcaps for reduced sensitivity.

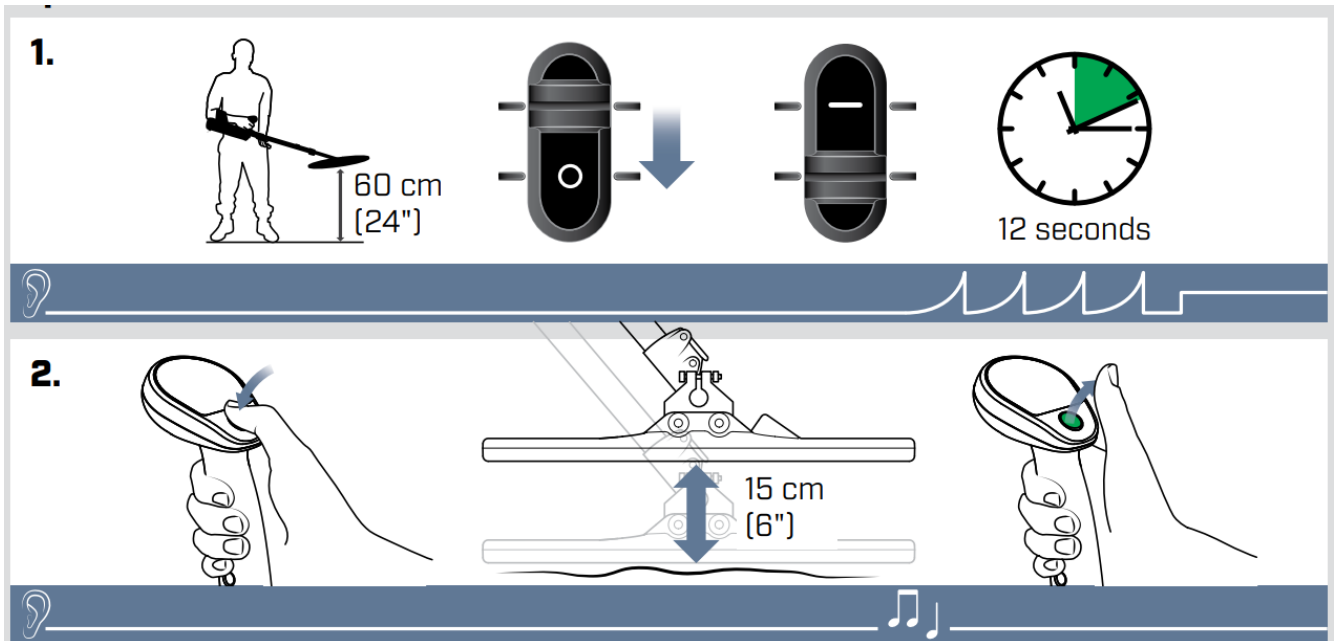
Product Usage Instructions

1. **Switch On:** Press the power button to turn on the F3 UXO Detector.
2. **Ground Balance:** Perform a ground balance procedure to ensure accurate detection. Follow the instructions provided in the Field Guide or Operations Manual.
3. **Test Piece:** Use the provided Test Piece to verify the detector's functionality. Place the Test Piece at a distance of 15 cm (6 inches) from the detector and hold it there for 12 seconds.
4. **Audio Reset:** If the audio feedback becomes inconsistent or distorted, perform an audio reset. Refer to the Field Guide or Operations Manual for detailed instructions.
5. **Noise Cancel:** In environments with high electromagnetic interference, perform a noise cancel procedure to minimize false signals. Follow the instructions provided in the Field Guide or Operations Manual.
6. **Endcap Interchange:** The F3 UXO Detector comes with a Red Endcap as an optional accessory. To interchange endcaps, refer to the Field Guide or Operations Manual for the step-by-step procedure.
7. **PC Customization:** Connect the F3 UXO Detector to a PC using the provided interface. Use the software provided to customize the detector's settings according to your requirements. Refer to the Field Guide or Operations Manual for detailed instructions on customization.
8. **Guide Arm Assembly:** Assemble the Guide Arm according to the instructions provided in the Field Guide or Operations Manual. This will ensure proper handling and positioning of the detector during operation.

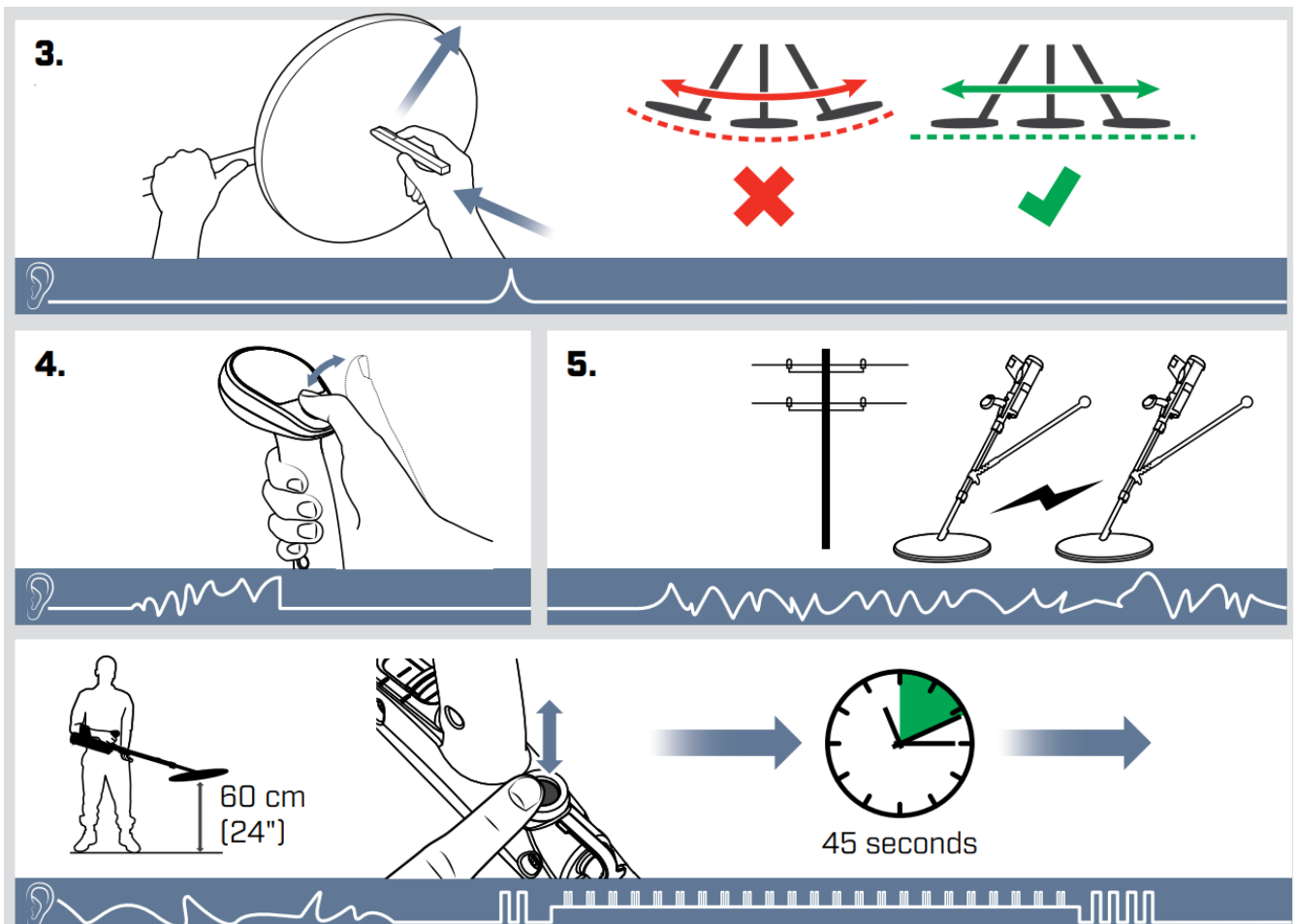
Note: It is important to thoroughly read and understand the Field Guide, Interchange Procedure, and Operations Manual before using the F3 UXO Detector. Follow all safety precautions and guidelines provided to ensure safe and effective usage of the product.

Operation

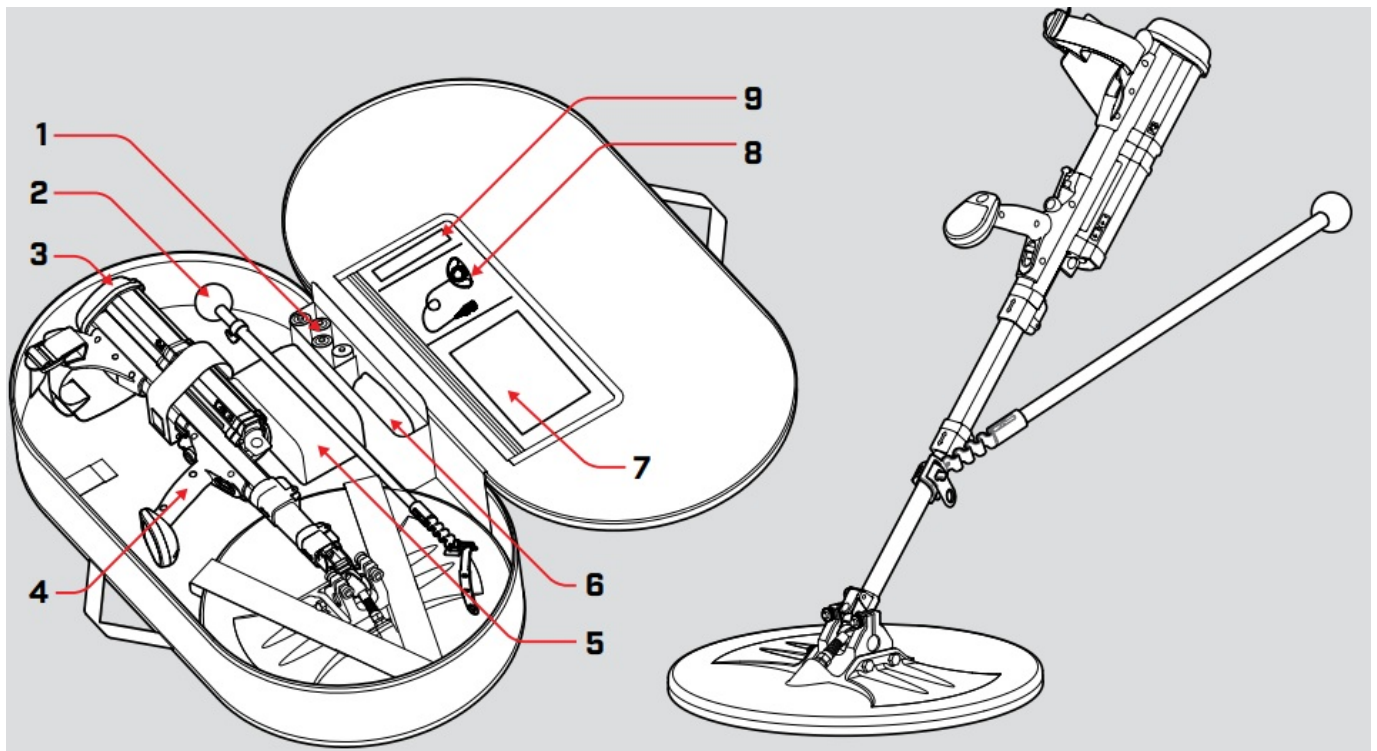
1. **Switch On**
2. **Ground Balance**



- 3. Test Piece
- 4. Audio Reset
- 5. Noise Cancel

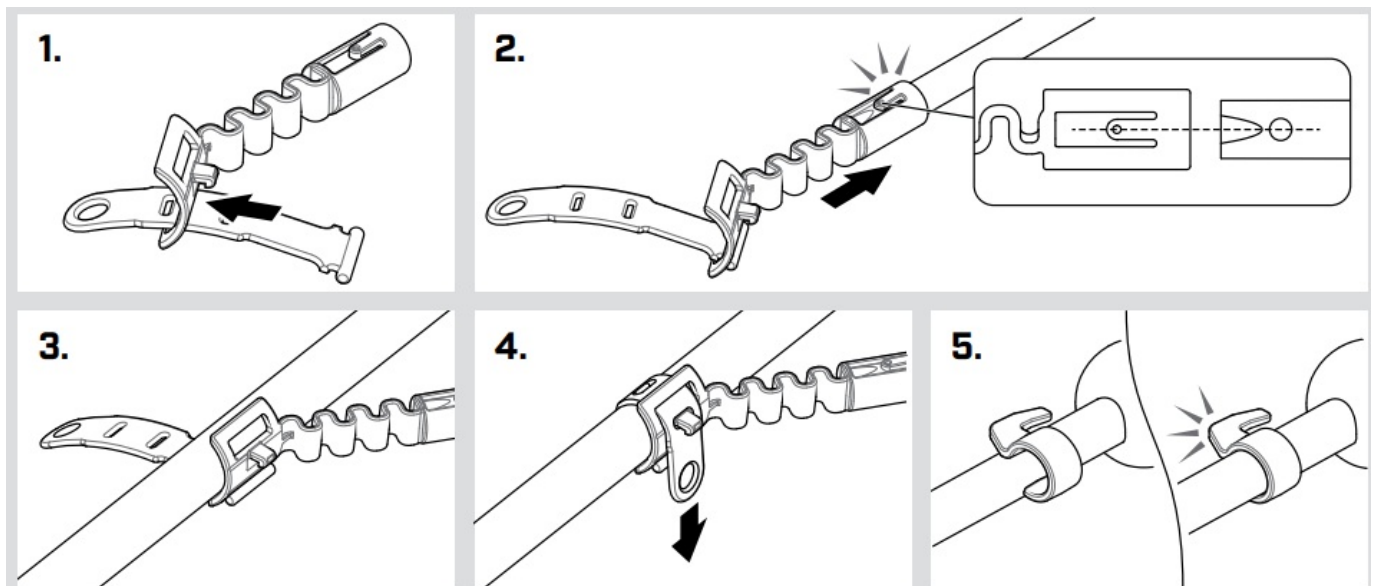


F3 UXO Configuration



1. Batteries 4 × D Cell
2. Guide Arm
3. Black Endcap (Default)
4. F3 UXO Detector
5. Battery Pack Bag and Extension Cable (Optional)
6. . Red Endcap (Yellow Endcap Optional)
7. Field Guide, Interchange Procedure and Operations Manual
8. Earset
9. Test Piece

Guide Arm Assembly



F3 Endcap Guide



Black
High Sensitivity
(Default Endcap)

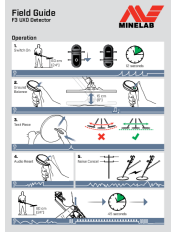


Red
Reduced
Sensitivity



Yellow
Detector Settings
Customisable
Via PC

Documents / Resources



[MINELAB F3 UXO Detector](#) [pdf] User Manual
F3 UXO Detector, F3, UXO Detector, Detector

[Manuals+](#).