



mindray D30 Bene Heart Defibrillator Monitor User Guide

[Home](#) » [mindray](#) » mindray D30 Bene Heart Defibrillator Monitor User Guide 

mindray

BeneHeart D30
Defibrillator / Monitor
Empowering Every Second



Contents

- [1 D30 Bene Heart Defibrillator Monitor](#)
- [2 Smart Touch, More Intuitive](#)
- [3 Rescue Triangle, More Comprehensive](#)
- [4 Redefine Toughness with Innovation](#)
- [5 Keep Connected with Greater Efficiency](#)
- [6 Documents / Resources](#)
 - [6.1 References](#)
- [7 Related Posts](#)

D30 Bene Heart Defibrillator Monitor



| | |
|--|---|
| | All in one 360J Manual defib /AED /Pacing/Monitoring: ECG, SPO ₂ , NIBP, CO ₂ |
| | Versatile paddles External paddles with contact indicator improve usability for clinicians |
| | Auditory and visual indication Trace the operation process with the help of sound and light indicators |
| | Ultra-light Only 4.2kg(with battery) for exceptional portability |
| | Three-step operation Power-Charge-Shock buttons for rapid and reliable operation |
| | Build-in recorder Enable multiple report printouts e.g. waveform, alarm, event, review, test |

Smart Touch, More Intuitive

Capacitive Full-Touch Screen

With advanced high-definition capacitive touch screen technology and flat UI design, D30 offers optimal

experience of clearer display and smoother operation, enabling efficiency at your fingertips.



Optimal visibility

- 8" display with 1024×768 resolution
- Auto-brightness

Confident operation

- Gesture-control touchscreen
- Keep physical knob and buttons for key operations

Wide adaptability

With the intelligent sensing, you can operate D30 normally even if

- the screen is wet
- wearing up to 5 layers of gloves

Visual AlarmSight™

D30 provides a series of problem-solving support with graphical visualization, not only alerting you to the problems, but also suggesting solutions to help resolve them.



Extensive Data Storage

| | | | | |
|------------------|------------------------|----------------------|-----------------------------|-------------------------|
| 1000 sets events | 120 hours ECG waveform | 200 hours trend data | 1000 sets auto test reports | 8 hours voice recording |
|------------------|------------------------|----------------------|-----------------------------|-------------------------|



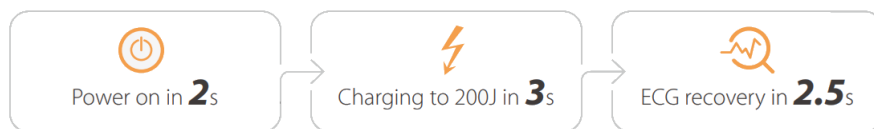
Rescue Triangle, More Comprehensive

High-quality rescue requires the resuscitation team to maintain the high quality and effectiveness of cardiopulmonary resuscitation during the rescue process. It also relies on timely, regular review and analysis of the rescue data and rescue quality that helps identify the routine training and assessment. Only by combining and advancing the three-in-one solution can the quality of rescue and the survival rate of SCA patients be improved.

Faster Resuscitation

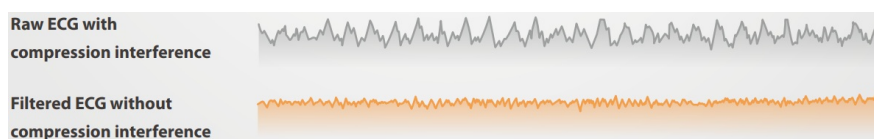
QShock™ -Faster to Shock

In line with the BeneHeart series, D30 is also equipped with new QShockM™ technology, taking less than 5s from power on to shock.



Shorter Interruption

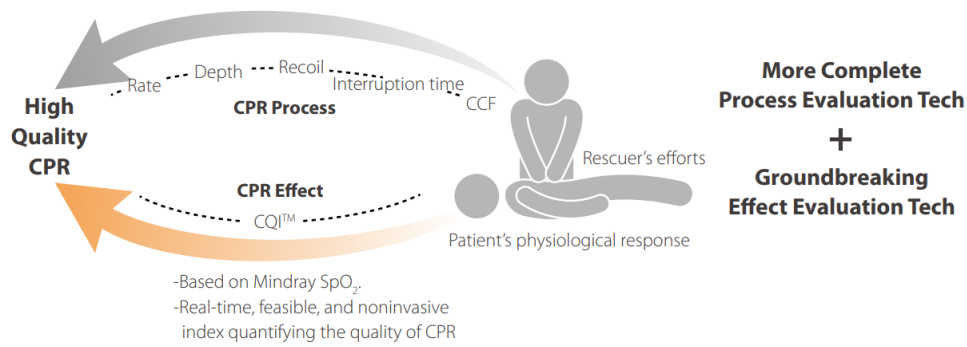
Mindray has developed state-of-the-art technologies that can filter out the compression interference for both ALS and BLS, to effectively reduce pauses in recognizing heart rhythm [1].



[1] only available when you perform CPR using defib pads or the CPR sensor.

CPR Feedback of both Process & Effect

With the CPR process feedback monitoring the real-time performance of rescuers, and the effect evaluation reflecting patients' responses to the rescue, D30 provides a comprehensive assessment of CPR quality to obtain a satisfactory resuscitation result.



Structured Debriefing

D30's structured debriefing protocols improve the performance of resuscitation teams in subsequent resuscitation events.

- The key data of each rescue is automatically uploaded to the debriefing system.
- CPR quality and defibrillation data included.
- Not only post-event analysis, but also periodic review.



Hands-on Training

- Training mode in D30 help you get real operation experience.
- Both single and multi-person mode are available.
- Support CPR and defib operation training



Redefine Toughness with Innovation

Preparing for varied scenarios and contingencies, D30 is designed to take on every new challenge in hospital environments anytime, anywhere. D30 empowers clinicians to respond confidently to changing clinical requirements and stay prepared for whatever comes their way.

| | |
|---|---|
|  | <p>0.75m drop protection of all six sides</p> |
|  | <p>IP55 water-/dust-proof</p> |
|  | <p>Bend-resistant cable, withstanding more than 400,000 tests</p> |
|  | <p>Resistant to 49 disinfectants</p> |
|  | <p>Bedrail hook for convenient nosocomial transshipment</p> |

Keep Connected with Greater Efficiency

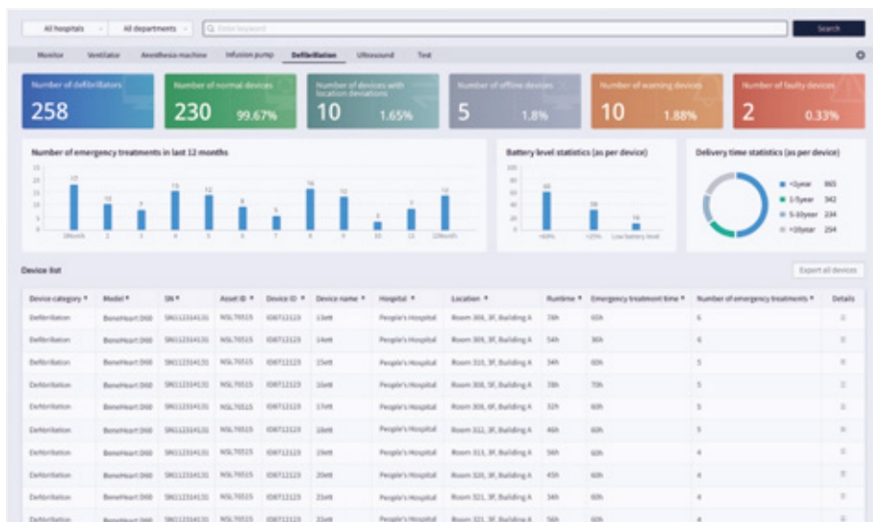
M-Connect™ IT solution integrates the patient data from D30 to avoid manual recording errors and allows flexible viewing of patient data on mobile devices anytime, anywhere. Its simple yet robust network connection is compatible with standard information infrastructure in most hospitals.



M-IoT Device Manager

M-IoT Device Manager obtains comprehensive device data to help biomedical engineers ensure the safety and effectiveness of all equipment at all times.

- Real-time failure monitoring and guidance for timely maintenance, reducing equipment downtime
- Battery status monitoring to ensure patient safety by limiting interruptions
- IP/MAC address for network access control to ensure cybersecurity



Pictures and function descriptions are for reference only. For actual configuration, please consult Mindray's sales staff.



Distributed by: LSR Healthcare Pty Ltd

www.lsrhealthcare.com.au


enquiries@lsrhealthcare.com.au

1300 859 767

mindray

healthcare within reach

Documents / Resources

| | |
|---|---|
|  | <p>mindray D30 Bene Heart Defibrillator Monitor [pdf] User Guide D30 Bene Heart Defibrillator Monitor, D30, Bene Heart Defibrillator Monitor, Heart Defibrillator Monitor, Defibrillator Monitor, Monitor</p> |
|---|---|

References

- [Australian Medical Supplies Online - Medical Equipment Australia– LSR Healthcare](#)
- [User Manual](#)

Manuals+ Privacy Policy

This website is an independent publication and is neither affiliated with nor endorsed by any of the trademark owners. The "Bluetooth®" word mark and logos are registered trademarks owned by Bluetooth SIG, Inc. The "Wi-Fi®" word mark and logos are registered trademarks owned by the Wi-Fi Alliance. Any use of these marks on this website does not imply any affiliation with or endorsement.