



Mimaki RasterLink Interface Installation Guide

September 9,
2025

Mimaki RasterLink Interface Installation Guide

RasterLink Interface Installation Guide



This document describes how to install the RasterLink Interface. RasterLink Interface is a tool that allows jobs to be created and printed directly from Simple Create without having to use RasterLink7. Please read this document thoroughly to ensure correct use.

Contents [[hide](#)]

- [1 Precautions](#)
- [2 System Requirements](#)
- [3 Installation Procedure](#)
- [4 Uninstallation Procedure](#)
- [5 Checking the RasterLink Interface Startup Status](#)
- [6 Documents / Resources](#)
 - [6.1 References](#)

Precautions



- Any unauthorized use or reproduction, in part or whole, of this manual is strictly prohibited.

- While every effort has been made to ensure the accuracy of the content in this document, please contact your dealer or our sales office if you have any questions.
- This document is subject to change without notice for improvement purposes.
- Copying Mimaki Engineering Co., Ltd. software described in this manual to other disks (except for the purpose of backup) or loading it to memory other than for the purpose of running it, is strictly prohibited.
- Note that some of the descriptions in this document may be different from the actual specifications due to improvements to and revisions of this software.
- With the exception of what is provided in the warranty provisions, Mimaki Engineering Co., Ltd. does not assume any liability for any damage (including, but not limited to, the loss of profit, indirect damage, special damage, or other monetary damages) resulting from the use or inability to use this product. The same shall also apply to cases where Mimaki Engineering Co., Ltd. has been advised of the possibility of damage in advance. For example, we shall not be liable for any loss of media (work) caused by use of this product or indirect losses caused by products created using the media.
- The latest version of this document can be downloaded from the Mimaki website.

Notation used in this guide

- The items and buttons displayed in screens are enclosed in square brackets [], such as [Open].

Symbols used in this guide

	• Describes details to be noted or that must be performed.
	• Explains details that are useful to know.

RasterLink is a trademark or a registered trademark of Mimaki Engineering Co., Ltd. in Japan and other countries. Microsoft, Windows, and Microsoft Edge are trademarks or registered trademarks of Microsoft Corporation in the United States and other countries.

Google and Google Chrome are trademarks or registered trademarks of Google LLC.

Other company names and product names described in this manual are trademarks or registered trademarks of their respective companies in Japan and other countries.

System Requirements

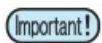
The following software must be installed on your PC before installing RasterLink Interface:

- RasterLink7 Ver 3.3.3 or later



· The version of RasterLink7 required will vary depending on the version of RasterLink Interface being used.

Installation Procedure



· RasterLink Interface must be installed by a user with administrator privileges. The procedure for installing RasterLink Interface is as follows:

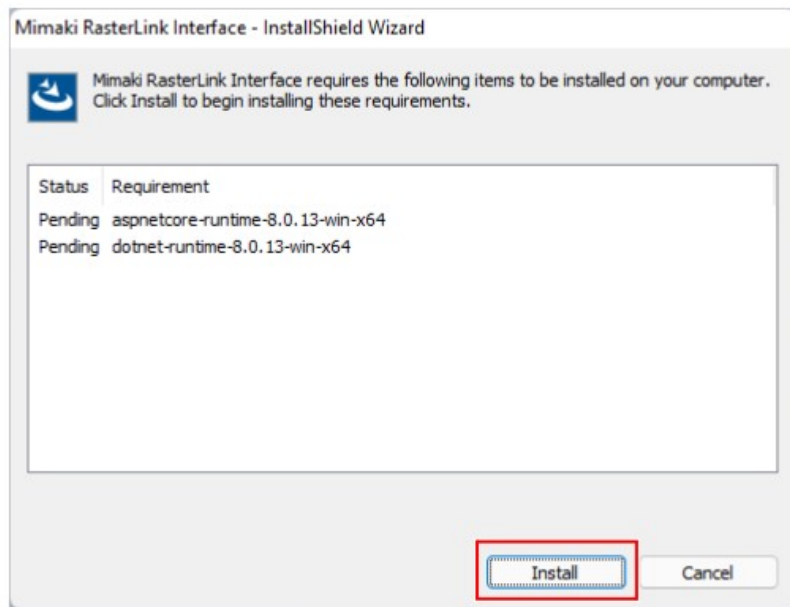
1. Install RasterLink7 (Ver 3.3.3 or later).

- For more information on the installation procedure, refer to the separate “RasterLink7 Installation Guide”.

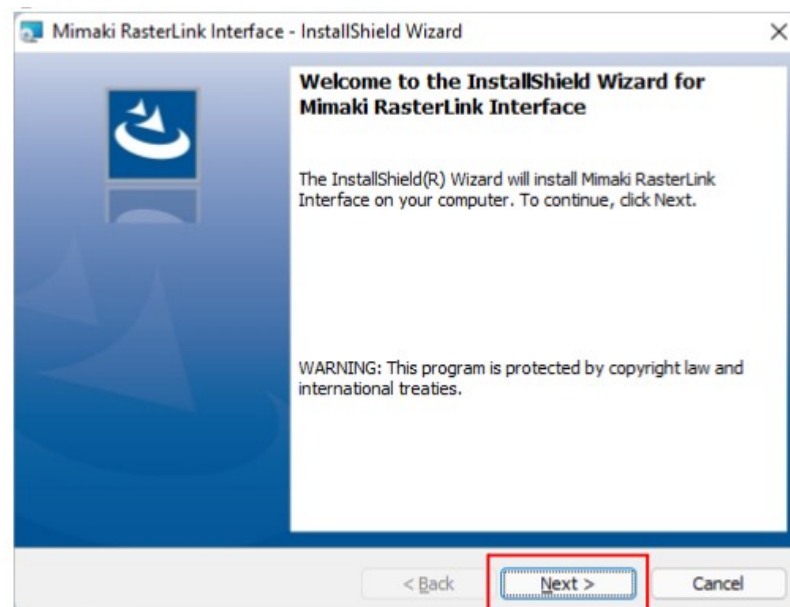
2. Download the RasterLink Interface installer from the official Mimaki website (<https://mimaki.com/product/software/rip/raster-link7/download.html>).

3. Double-click on the downloaded installer.

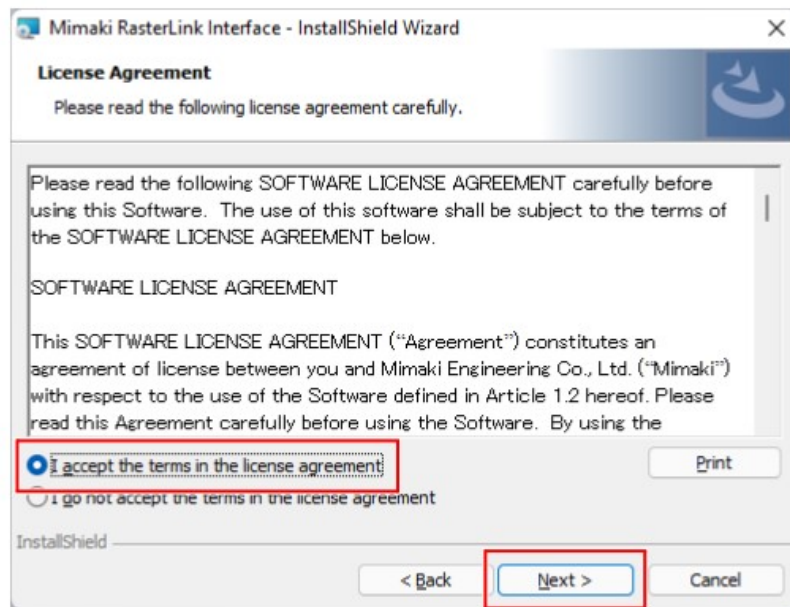
- The installer launches.
- If Microsoft .NET Runtime and Microsoft ASP.NET Core Shared Framework are not installed on the PC, they need to be installed using the corresponding installers, which will launch.



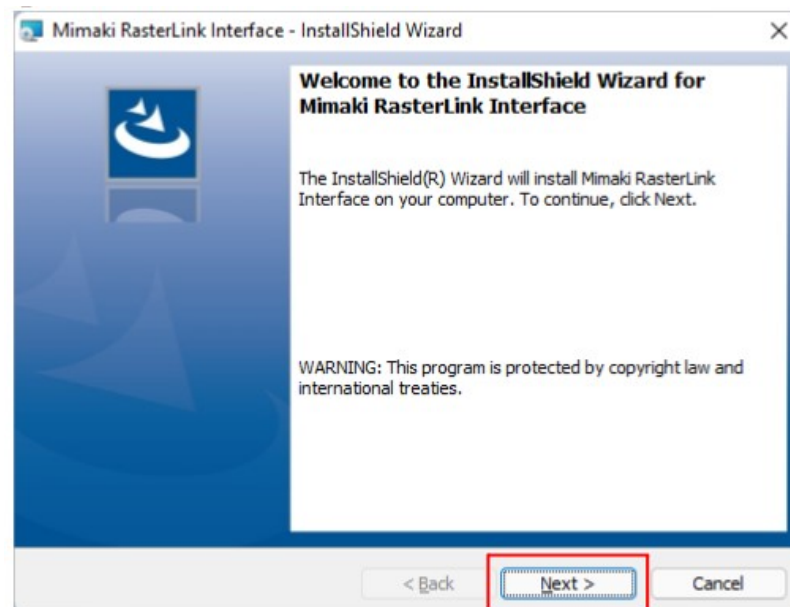
4. Click [Next].



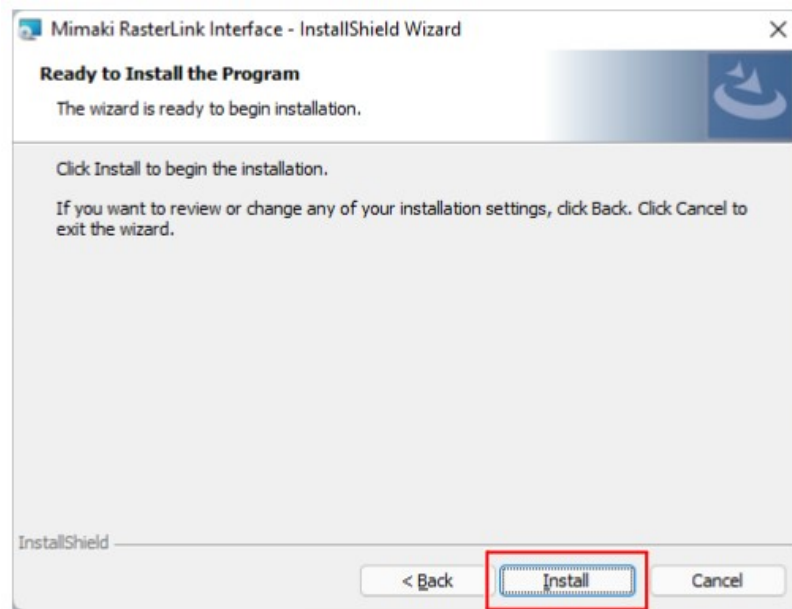
5. Select [I accept the terms in the license agreement], then click [Next].



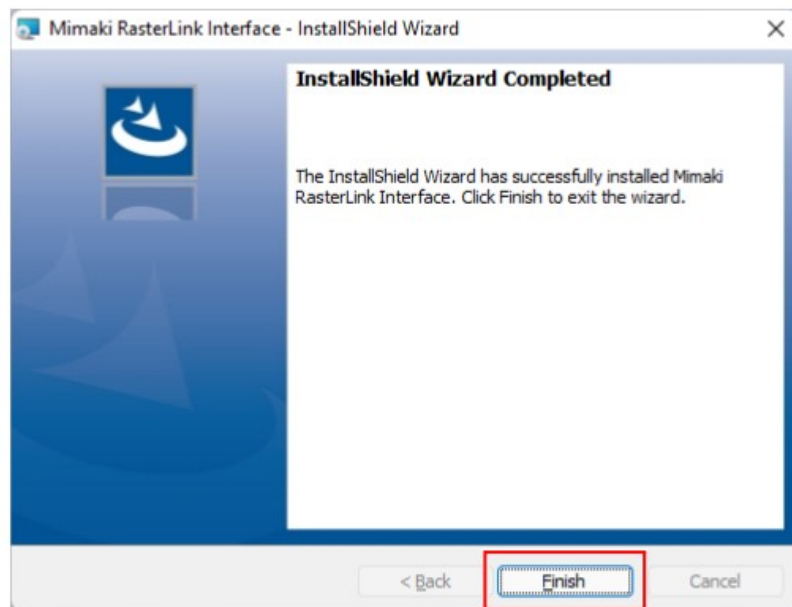
6. Click [Next].



7. Click [Install].



8. Click [Finish].



· Installation is now complete.

Uninstallation Procedure

The procedure for uninstalling RasterLink Interface is as follows:

- 1. On the Windows menu, select [Apps] – [Apps & features].**
- 2. Select “Mimaki RasterLink Interface”.**
- 3. Click [Uninstall].**

- RasterLink Interface will be uninstalled.

Checking the RasterLink Interface Startup Status



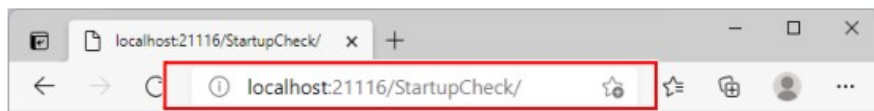
RasterLink Interface startup

- RasterLink Interface starts up automatically in the background when RasterLink7 is launched.

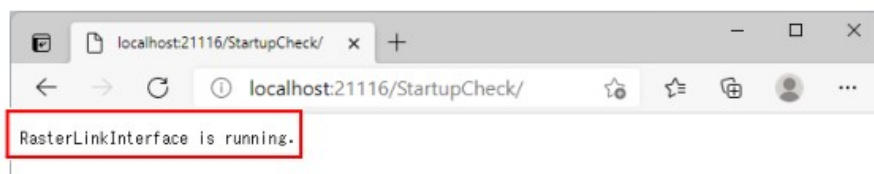
It does not have a user interface, therefore will not appear on the PC screen even when running. You can check its startup status as follows:

1. Open a web browser such as Microsoft Edge or Google Chrome on the PC installed with RasterLink Interface.

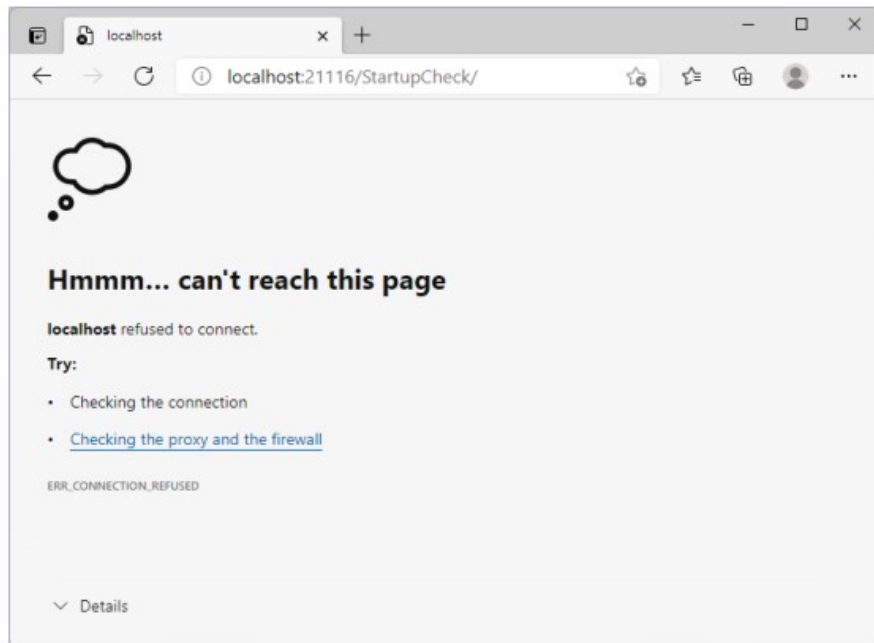
2. Enter “<http://localhost:21116/StartupCheck/>” in the URL input bar, then press the Enter key.



- If RasterLink Interface is running, the message “RasterLinkInterface is running.” will be displayed as shown below.



- If it is not running, the screen will appear as shown below.



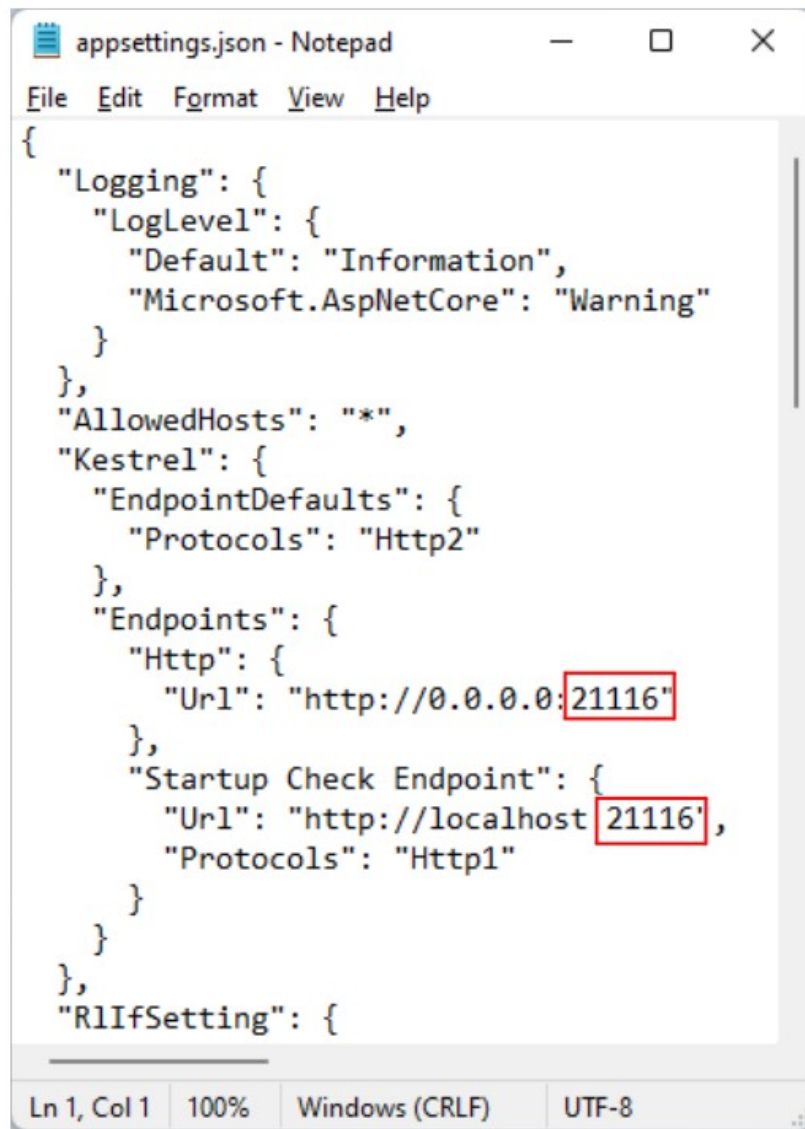
Check whether RasterLink7 is running. If it is not running, start it up. If it is already running, exit and then restart it.

If RasterLink Interface does not start after restarting RasterLink7

If the RasterLink Interface does not start after restarting RasterLink7, change the port number using the following method.

1. Open the file “appsettings.json” in the following path in the RasterLink7 installation folder (default: “C:MijCtrl”) with Notepad and replace “21116” (in two places) in “Url” with any unused port number.

- The port numbers for the two locations must be the same.
- Example of path where “appsettings.json” is located
C:MijCtrlAddOnRasterLinkInterfaceBinappsettings.json



```
appsettings.json - Notepad
File Edit Format View Help
{
  "Logging": {
    "LogLevel": {
      "Default": "Information",
      "Microsoft.AspNetCore": "Warning"
    }
  },
  "AllowedHosts": "*",
  "Kestrel": {
    "EndpointDefaults": {
      "Protocols": "Http2"
    },
    "Endpoints": {
      "Http": {
        "Url": "http://0.0.0.0:21116"
      },
      "Startup Check Endpoint": {
        "Url": "http://localhost:21116",
        "Protocols": "Http1"
      }
    }
  },
  "RIIfSetting": {
```

2. Restart RasterLink7.

3. Connect to “http://localhost:(Changed port number)/StartupCheck/” with a browser and check the startup status.

· Check to see if the connection is made properly.

See step 2 of P.6 Checking the RasterLink Interface Startup Status to check the status.



D203926-10-30062025

© MIMAKI ENGINEERING CO., LTD. 2025

Documents / Resources



[Mimaki RasterLink Interface \[pdf\]](#) Installation Guide

D203926-10, RasterLink Interface, RasterLink, Interface

References

- [User Manual](#)

📁 D203926-10, Interface, Mimaki, RasterLink, RasterLink

📁 Mimaki Interface

Leave a comment

Your email address will not be published. Required fields are marked *

Comment *

Name

Email

Website

☐ Save my name, email, and website in this browser for the next time I comment.

Post Comment

Search:

e.g. whirlpool wrf535swhz

Search

[Manuals+](#) | [Upload](#) | [Deep Search](#) | [Privacy Policy](#) | [@manuals.plus](#) | [YouTube](#)

This website is an independent publication and is neither affiliated with nor endorsed by any of the trademark owners. The "Bluetooth®" word mark and logos are registered trademarks owned by Bluetooth SIG, Inc. The "Wi-Fi®" word mark and logos are registered trademarks owned by the Wi-Fi Alliance. Any use of these marks on this website does not imply any affiliation with or endorsement.