



## **milwaukee ML-LED Lumens Focusing Flashlight Instructions**

[Home](#) » [Milwaukee](#) » milwaukee ML-LED Lumens Focusing Flashlight Instructions 

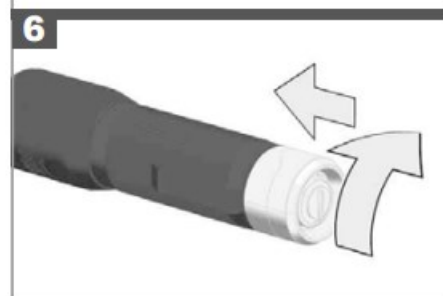
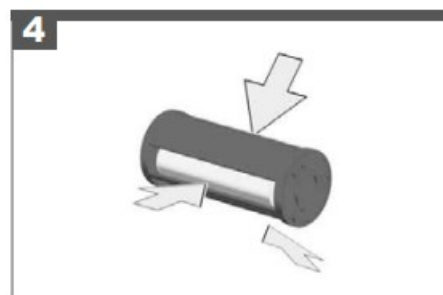
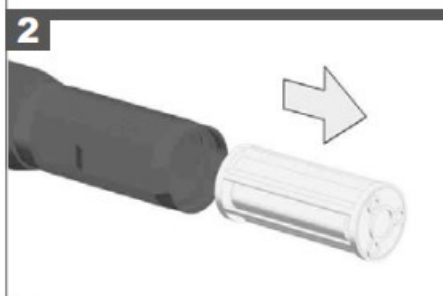
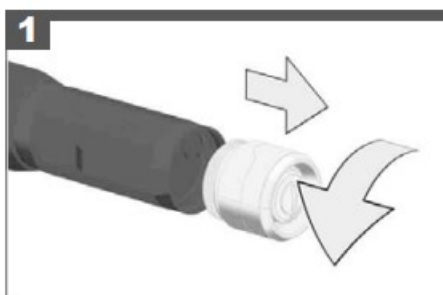
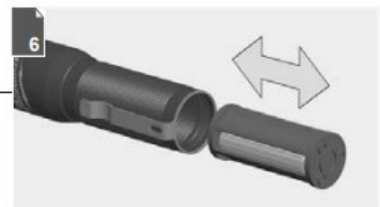
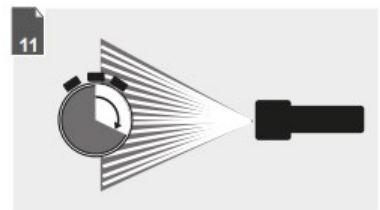
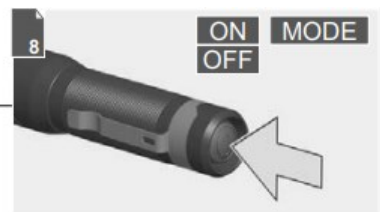
### **milwaukee ML-LED Lumens Focusing Flashlight Instructions**

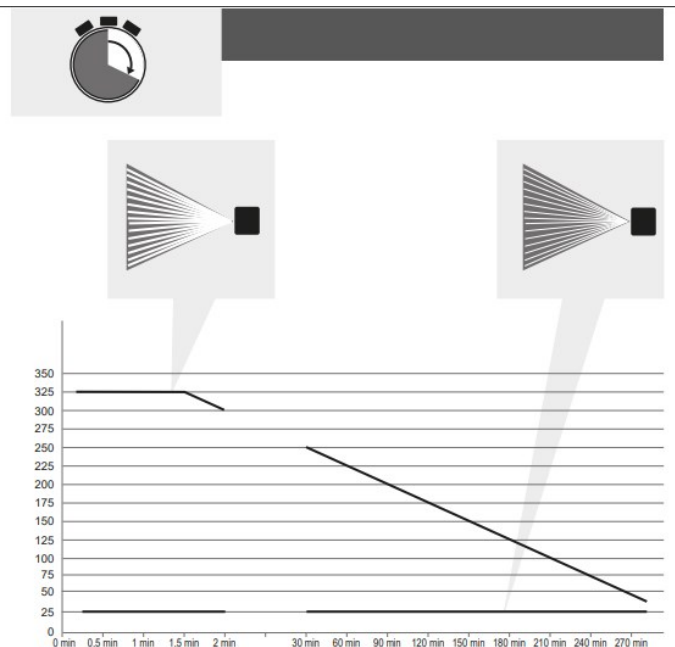
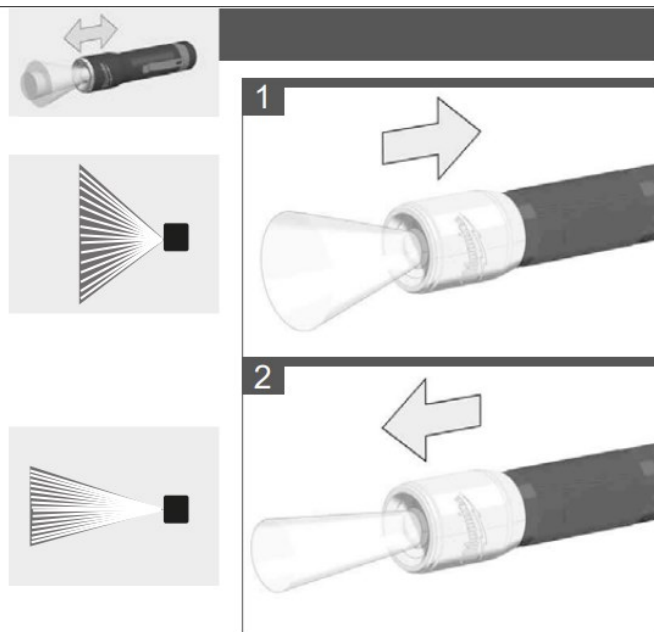
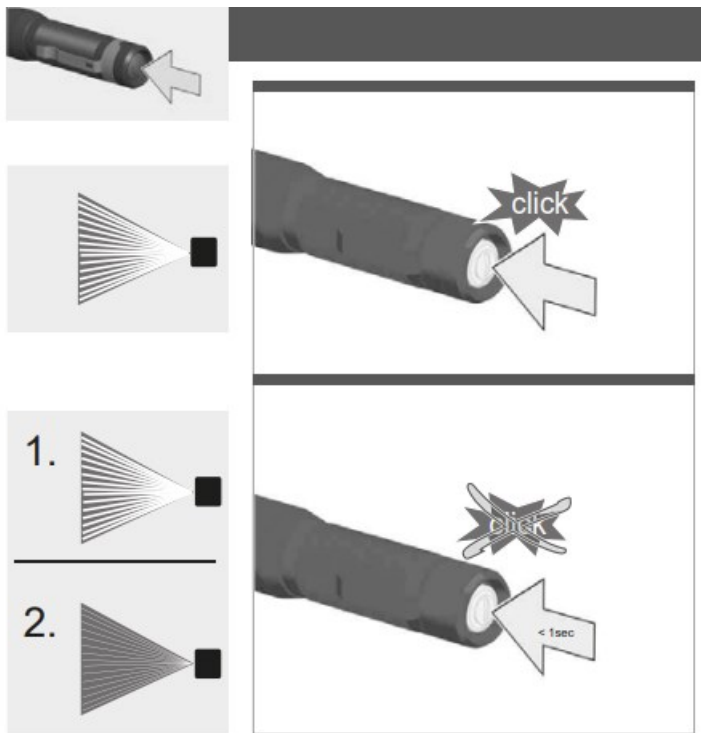


#### **Contents**

- [1 INSTALLATION](#)
- [2 TECHNICAL DATA](#)
- [3 SAFETY INSTRUCTIONS BATTERY LAMP](#)
- [4 SAFETY INSTRUCTIONS BATTERY](#)
- [5 SPECIFIED CONDITIONS OF USE](#)
- [6 MAINTENANCE](#)
- [7 SYMBOLS](#)
- [8 Documents / Resources](#)
  - [8.1 References](#)
- [9 Related Posts](#)

### **INSTALLATION**





## TECHNICAL DATA

Rated Power input: . 4 W

Lighting time: 5 h

Mode High: 18 h

Luminous flux

Mode High: 325 lm

Mode Low: 25 lm

Colour rendering index (CRI): 80

Colour temperature: 4000 K

Battery voltage: 4,5 V (3×1,5V)

Battery type: LR03 / AAA

Weight according EPTA-Procedure 01/2014: 0,13 kg

Protection class: IP 67

**WARNING!** Read all safety warnings and all instructions. Failure to follow the warnings and instructions may

result in electric shock, fire and/or serious injury. Save all warnings and instructions for future reference.

## **SAFETY INSTRUCTIONS BATTERY LAMP**

**Warning:** Do not direct the light beam at persons or animals and do not stare into the light beam yourself (not even from a distance). Staring into the light beam may result in serious injury or vision loss. Don't use this tool in wet areas. The light source of this luminaire is not replaceable; when the light source reaches its end of life the whole luminaire shall be replaced

## **SAFETY INSTRUCTIONS BATTERY**

This tool is designed to be powered by 3 LR03 / AAA batteries properly inserted into the instrument. Do not attempt to use with any other voltage or power supply. Do not leave batteries within the reach of children.

Do not mix new and used batteries. Do not mix brands (or types within brands) of batteries. Do not mix rechargeable and non-rechargeable batteries. Install batteries according to polarity (+ / -) diagrams. Properly dispose of used batteries immediately. Battery acid may leak from damaged batteries under extreme load or extreme temperatures. In case of contact with battery acid wash it off immediately with soap and water. In case of eye contact rinse thoroughly for at least 10 minutes and immediately seek medical attention.

## **SPECIFIED CONDITIONS OF USE**

The Battery Lamp is intended to be used light independent use away from mains supply. Do not use this product in any other way as stated for normal use

## **MAINTENANCE**

The light source of this luminaire is not replaceable; when the light source reaches its end of life the whole luminaire shall be replaced. Use only Milwaukee accessories and spare parts. Should components need to be replaced which have not been described, please contact one of our Milwaukee service agents (see our list of guarantee/service addresses). If needed, an exploded view of the tool can be ordered. Please state the machine type printed as well as the six-digit No. on the label and order the drawing at your local service agents or directly at: Techtronic Industries GmbH, Max-Eyth-Straße 10, 71364 Winnenden, Germany

## **SYMBOLS**



CAUTION! WARNING! DANGER!



Please read the instructions carefully before starting the machine.



Do not stare at the operating light source.



Class III electrical protection.



Do not dispose electric tools, batteries/ rechargeable batteries together with household waste material. Electric tools and batteries that have reached the end of their life must be collected separately and returned to an environmentally compatible recycling facility. Check with your local authority or retailer for recycling advice and collection point.



European Conformity Mark



British Conformity Mark



Ukraine Conformity Mark




EurAsian Conformity Mark

Copyright 2020 Techtronic Industries GmbH Max-Eyth-Str. 10 71364 Winnenden  
Germany +49 (0) 7195-12-0

[www.milwaukeeeetool.eu](http://www.milwaukeeeetool.eu)

## Documents / Resources

|   |  |
|---|--|
|  | <p><a href="#">milwaukee ML-LED Lumens Focusing Flashlight</a> [pdf] Instructions<br/>ML-LED, Lumens Focusing Flashlight, Focusing Flashlight, Lumens Flashlight, Flashlight, ML-LED</p> |
|---|--|

## References

- [Milwaukee Tool Europe | Cordless Power Tools, Outdoor Tools, Hand Tools, PPE, Work wear. Storage and Accessories. | Milwaukee Tools Europe](#)