



Mills Mini Blowing Junction Block Owner's Manual

[Home](#) » [Mills](#) » Mills Mini Blowing Junction Block Owner's Manual 



millsltd.com

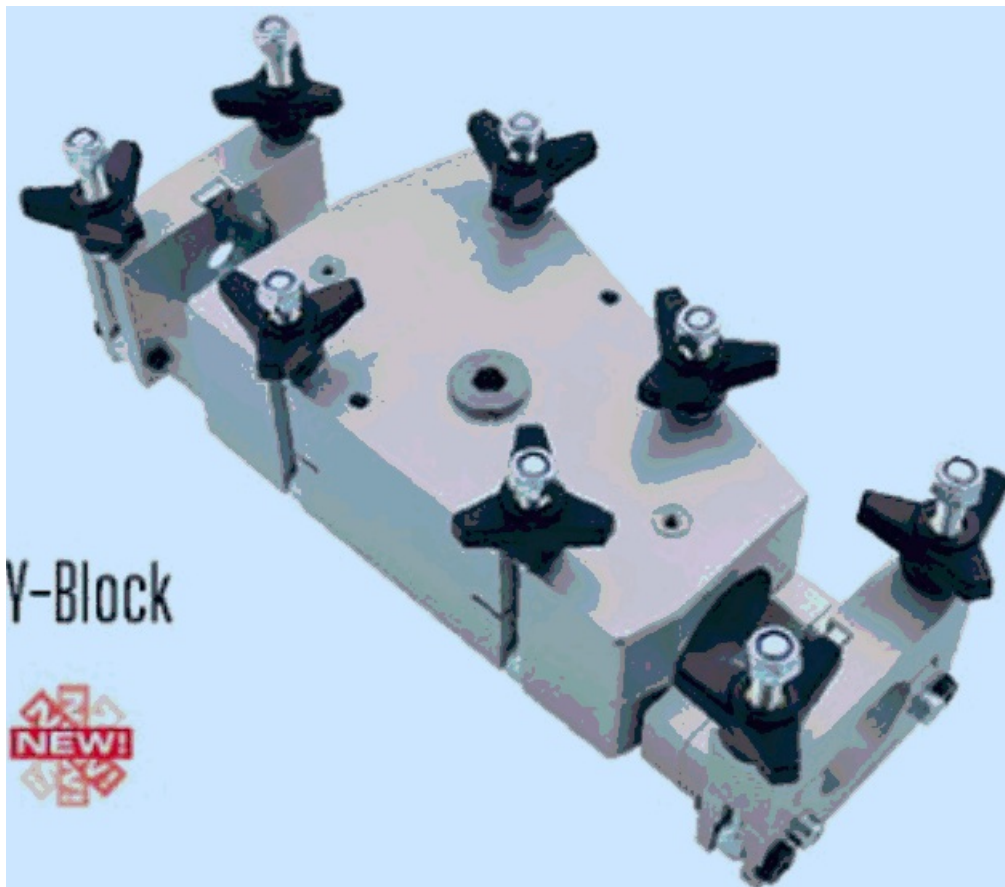
**Mini Blowing Junction Block for Manual
Blowing 7-10 mm Microduct**



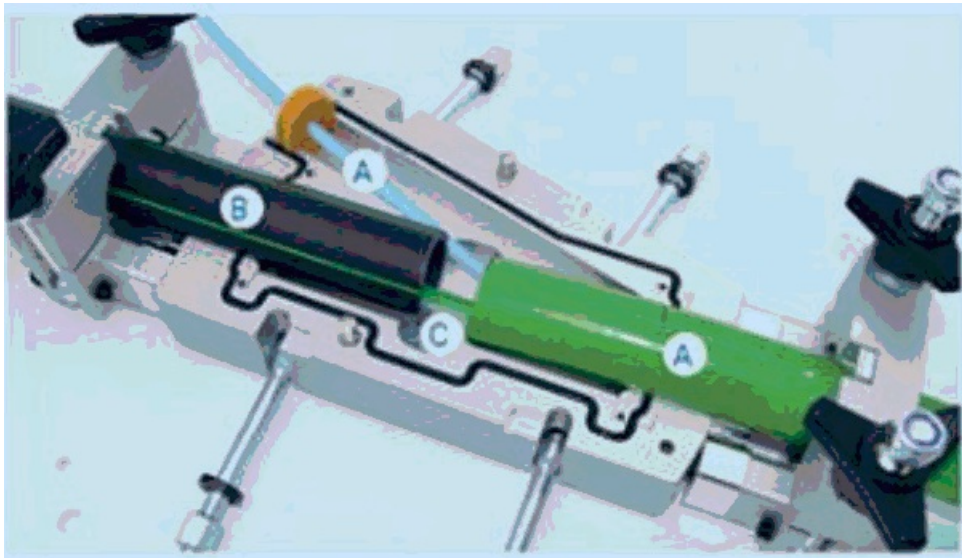
Contents

- [1 ACCESSORIES](#)
- [2 Short Description](#)
- [3 Description](#)
- [4 Documents / Resources](#)
 - [4.1 References](#)
- [5 Related Posts](#)

ACCESSORIES



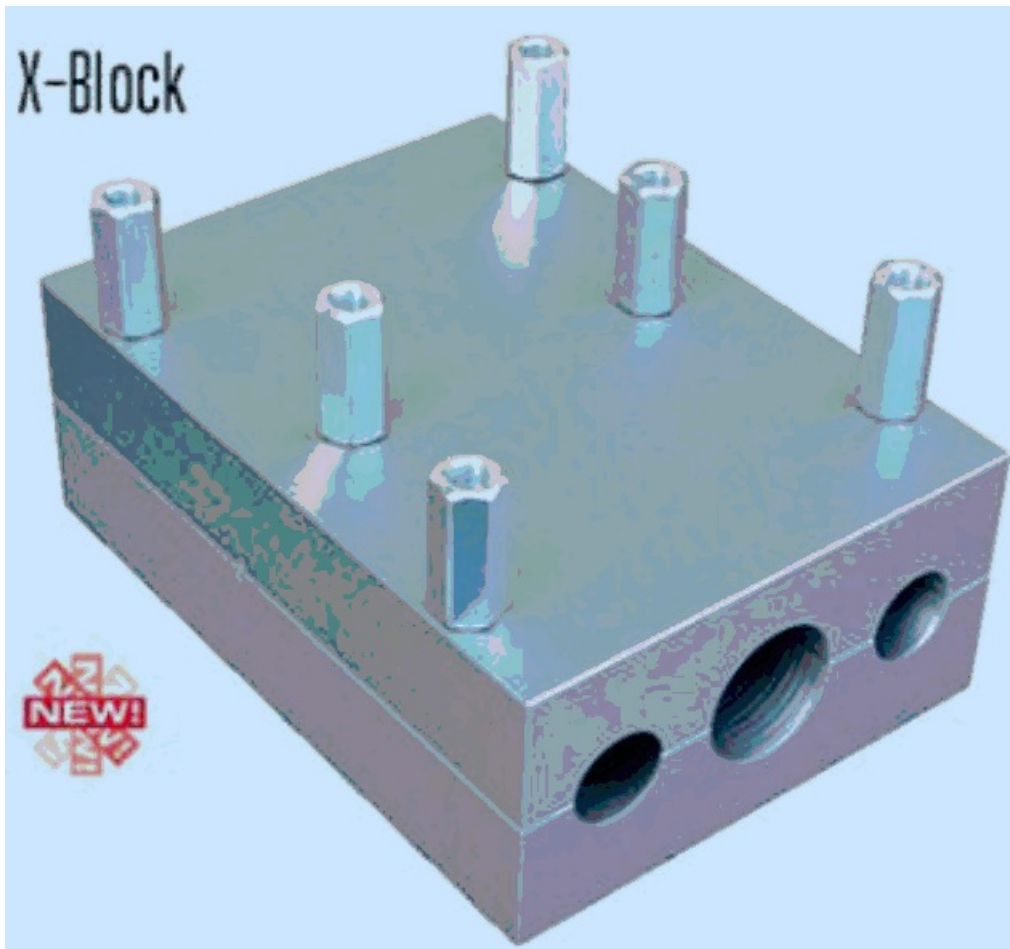
The V-block, used for overblow, can assist you in adding one cable to an existing duct where another cable is installed. Its surface is treated aluminium and it can withstand air/water pressure up to 25 bar. With Fremco's customized duct holder and adaptors, the V-Block is more flexible than ever as it can be fitted into different sizes of ducts between 14 mm and 65 mm. This means you can modify both ends of the Y-block to fit each specific overblow.



- A) Existing cable or duct,
- B) Supply duct
- C) New cable

Direct Air Connection

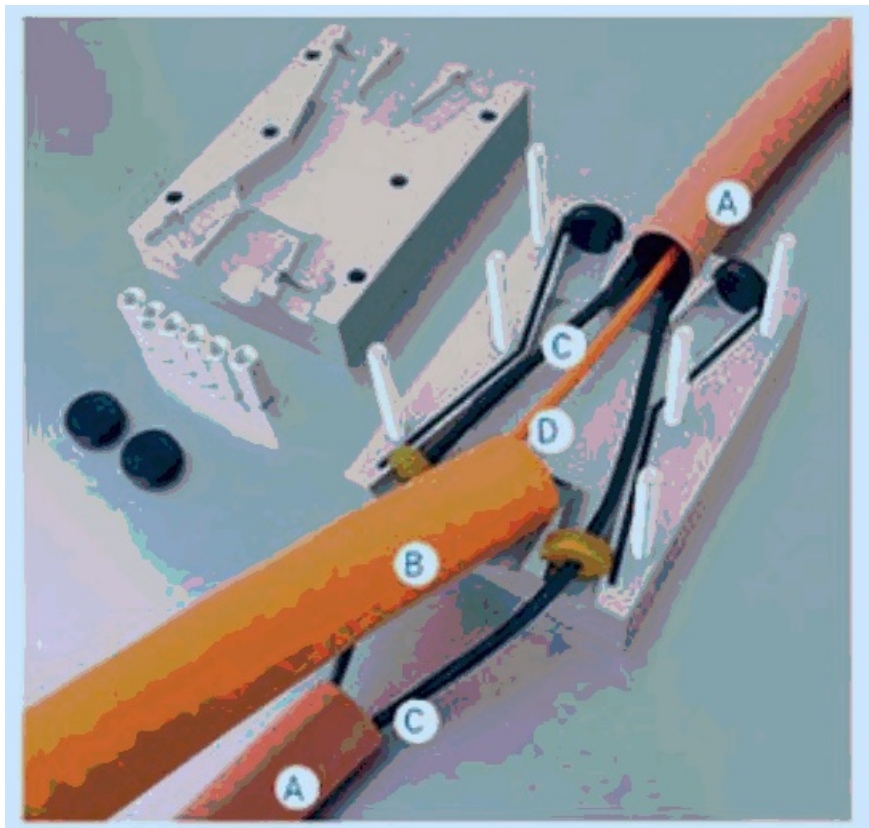
When utilizing the V-block, especially with smaller Fremco machines, the V-block is featured with a direct air connection in the lid. The direct connection of air makes it possible to do overblow with fewer steps, saving time for the fibre blowing engineer



The X-block is used for adding one cable to an existing duct with two cables inside. It is made from surface treated aluminium and can easily withstand a pressure of 25 bar from air/water-

The X -block is made with a fixed 40 mm connection at one end and a fixed 50 mm connection at the opposite end.

This means that the block can be freely reversed and connected to 40 mm and 50 mm existing ducts in the



A) 40 mm Existing row duct.

B) SO mr, st:pply duct' from Powerflow RAPID Multiflow RAPID.

C) Existing cable

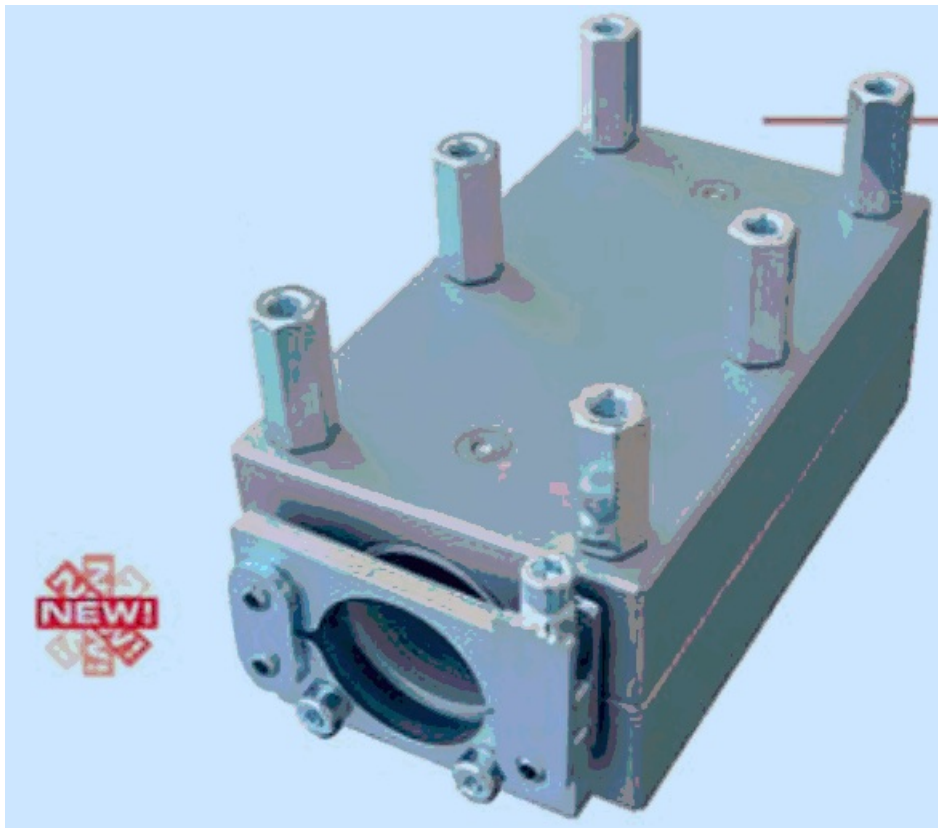
D) New cable

ground and connected to PowerFlow or MultiFlow with either a 40 mm or 50 mm supply duct (depending on availability).

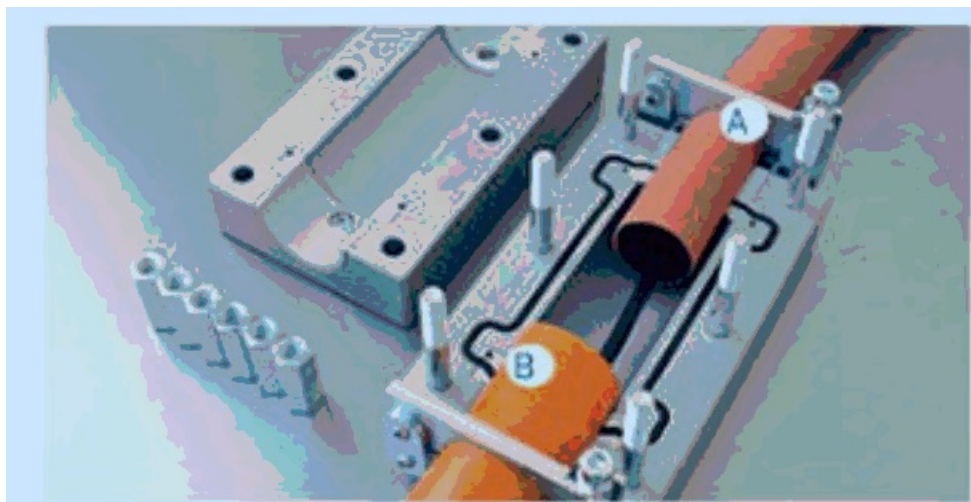
The X-block uses the same type of cable seals as the junction block.

PART NO	DESCRIPTION	PLEASE CALL SALES FOR FURTHER INFO RMATION AND PRICIN G
XBLOCK	OVERBLOW X BLOCK	

Duct joining block



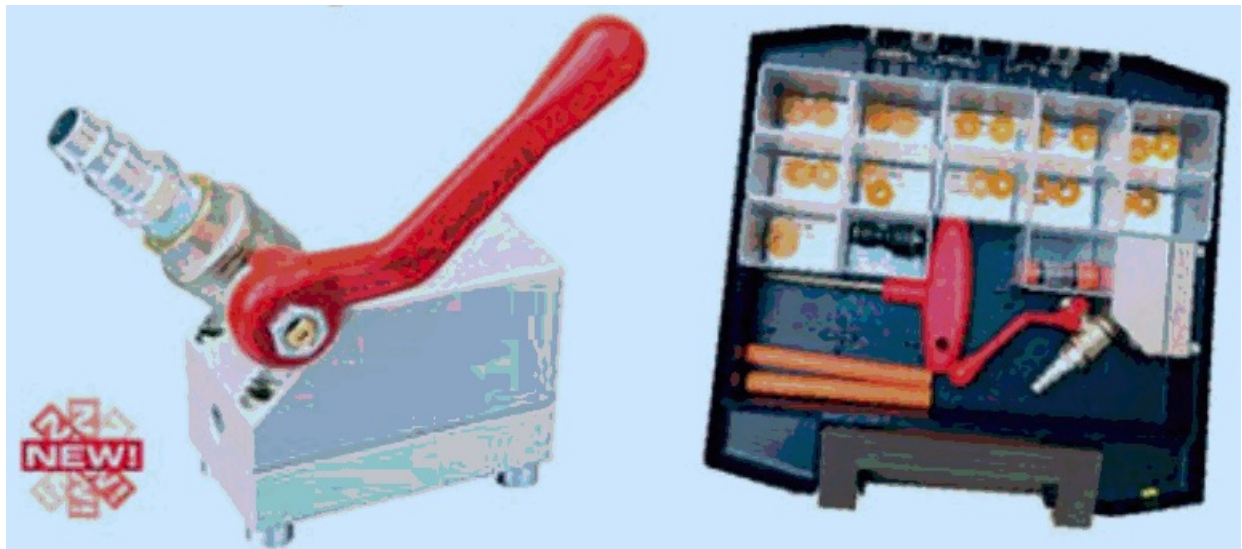
The duct joining block is used for joining ducts in almost all combinations between 14 and 50 mm. Unlike a plastic connector, the joining block can be split into two halves and used again and again. At the same time it can withstand much greater pressure. It's made from surface treated aluminium and can easily withstand a pressure of 25 bar from air/water.



- A) Any 4, 16, 20, 25, 32, 40 or 50 mm duct
- B) Any 74, 16, 20, 25, 32, 40 or 50 mm duct

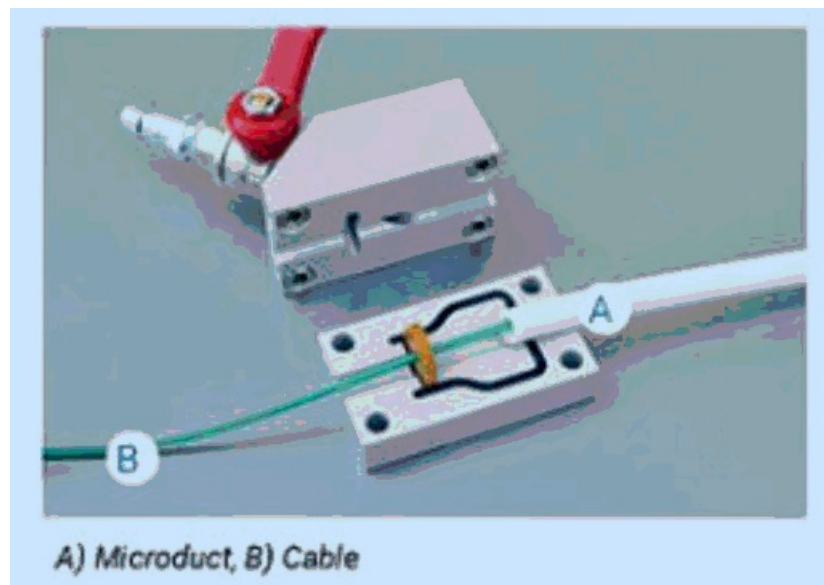
The duct joining block uses the same type of inserts and duct collets as the junction block. This means that they can be mixed in all kinds of combinations.

Mini Blowing Junction Block



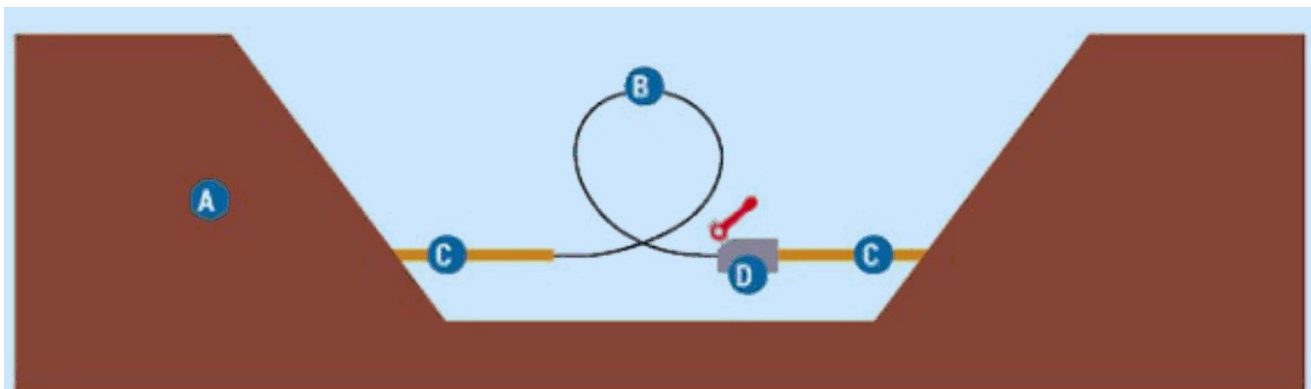
The mini blowing junction block is used for straightening a cable when blowing in two directions, and when there is a loop left because the regular blowing machine does not fit into the excavation (see illustration below). It is the perfect accessory for a MiniFlow RAPID.

The mini blowing junction block can also be used to blow a cable (by hand in short distances) from a narrow spot



where there is no room for a regular blowing machine. It's made from surface treated aluminium and can withstand the same air pressure as the MiniFlow Rapid.

The mini blowing junction block is available in several variations to suit specific microduct sizes from 7mm all the way up to 16mm. See the full range at milisltd.com



A) Ground

- B) Cable with loop after blown in both directions
- C) fAcrtduct
- C) Mini blowing junction block

Short Description

Fremco Mini Blowing Junction Block for Manual Blowing 7-10 mm Microduct

Description

The mini blowing junction block is used as a junction when blowing fibre in two directions, and there is a loop left because the regular blowing machine does not fit into the manhole/excavation making it the perfect accessory for a MiniFlow Rapid.

The mini blowing junction block can also be used to blow a cable (by hand in short distances) from a narrow spot where there is no room for a regular blowing machine.

It's made from surface treated aluminium and can withstand the same air pressure as the MiniFlow Rapid and uses the same type of cable seals.

<https://www.millsltd.com/default/mini-blowing-junction-block-for-manual-blowing-7-10-mm-microduct.html>



**Mills Limited Unit 2,
Zodiac Business Park,
High Road,
Cowley
Uxbridge
UB8 2GU**

Contact us on:

Tel: 020 8833 2626

Fax: 020 8833 2600

Email: sales@millsltd.com

Company No. 00282704


VAT No. 227082574

Visit millsltd.com to see the full range

email: sales@millsltd.com purchase online- www.millsltd.com

20/11/2022

Documents / Resources

	<p>Mills Mini Blowing Junction Block [pdf] Owner's Manual Mini Blowing Junction Block, Mini Blowing Block, Blowing Junction Block, Blowing Block, Junction Block</p>
---	---

References

- [!\[\]\(a22ba4e13c745edbf29e51af246c4c12_img.jpg\) Mini Blowing Junction Block for Manual Blowing 7-10 mm Microduct -Mills Ltd - London's Leading Supplier Of Structured Cabling & Specialist Tooling -](#)

Manuals+.