

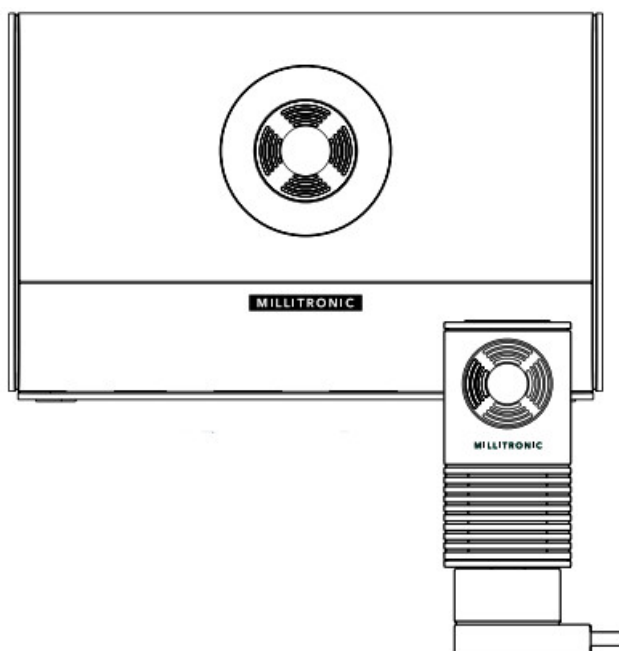


MILLITRONIC HIVE Wireless USB3.0 transmitter Wireless Dock receiver User Manual

[Home](#) » [MILLITRONIC HIVE](#) » MILLITRONIC HIVE Wireless USB3.0 transmitter Wireless Dock receiver User Manual 



Wireless USB3.0 transmitter
Wireless Dock receiver



Introduction

Thank you for purchasing this MILLITRONIC product. You can visit our website: www.millitronic.com.tw

Trademarks ™ MILLITRONIC CO., LTD
Logo are owned by MILLITRONIC CO.,
LTD Any non MILLITRONIC trademarks
are used for reference purposes only.

Contents

1 Overview

2 Specification

3 Chapter 1 – Installing the dock

4 Federal Communication Commission Interference Statement Millitronic MG360

5 Documents / Resources

5.1 References

6 Related Posts

Overview

Product Description

The Millitronic HIVE WiGig Docking station lets you wirelessly connect your Windows 10 laptop to a big-screen display.

Enjoy a brand-new, latency-free user experience that is free of annoying cables with 0GHz Wireless Gigabit technology. Connect any monitor via the HDMI /VGA port on the Millitronic HIVE WiGig Docking station, then wirelessly connect your windows 10 laptop via WiGig. The pleasures of near-zero latency (under 30ms) will significantly enhance your productivity.

UNIVERSAL DOCKING STATION: The Millitronic Hive WiGig Docking station is compatible with all PC laptops (Windows 10 64bit) that are equipped with USB3.0 ports.

CONNECT DISPLAY: Hook up the projector/monitor to the docking station using the VGA and HDMI ports.

MORE PORTS: Connect a variety of peripherals to Millitronic HIVE Docking station with one USB3.0 port, one DMI and one VGA port, and a Gigabit Ethernet port.

This Package Includes The Following:

- Wireless USB3.0 transmitter: 1 unit.
- Wireless Dock receiver: 1 unit.
- Power Adapter (output DC 12 V): 1 unit
- User manual
- Warranty card: 1 year

In Following Demonstration, The Following Is Required:

- One laptop
- One displayer with HDMI / VGA connector
- One HDMI / VGA cord

Features:

- HDMI/VGA Output.
- Size: 183mm X 122mm.
- Low latency display.

Specification

Wireless Dock Receiver

Wireless

60GHz Radio

Adaptive 180 Degree Beamforming

Connection Interface

Compliant with USB 3.0 / 2.0

Compliant with HDMI/VGA (Single output)

Ethernet

Dimension

Size: 185 x 120.7 x 40.3 mm

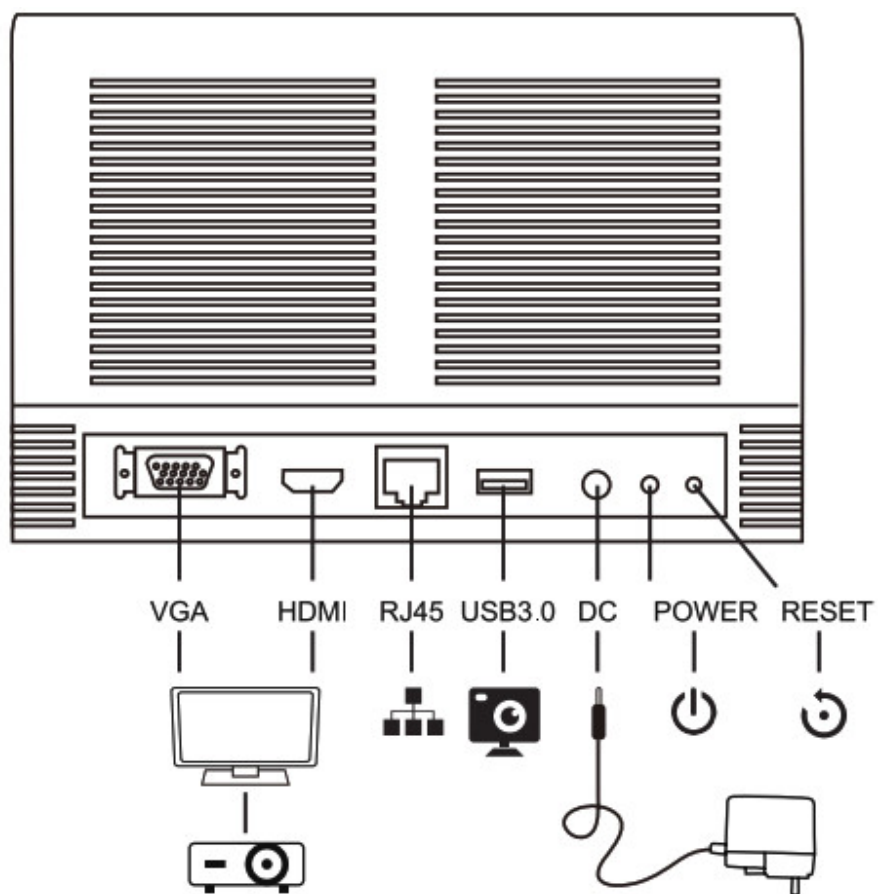
Weight: 246 g

Certification

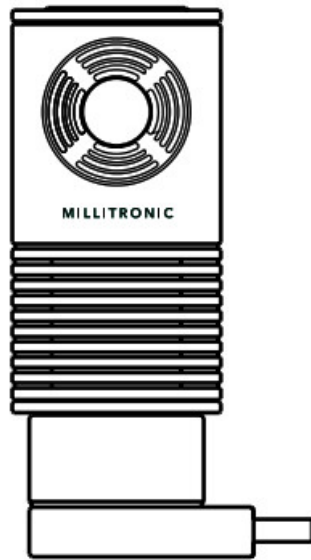
FCC approved for indoor use

Power

DC 12V-1A in



Wireless USB3.0 Transmitter



Wireless

60GHz Radio

Adaptive 360 Degree Beamforming

Features

USB 3.0 plug and play, driver included

Storage: 8GB

Connection Interface

Compliant with USB 3.0 Type A

Driver Support

Windows 10, 64-bit RS3 v1709 above only

Dimension

Size: 110.3 x 59.3 x 17.3 mm

Weight: 65 g

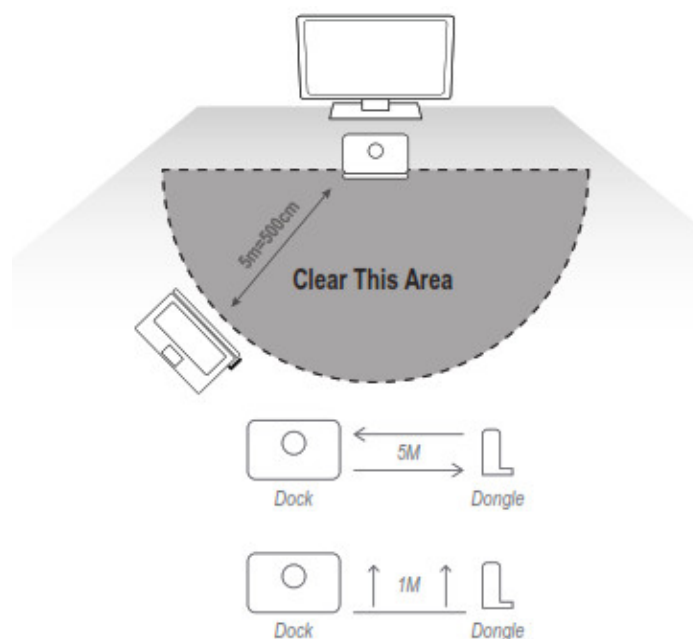
Certification

FCC approved for indoor use

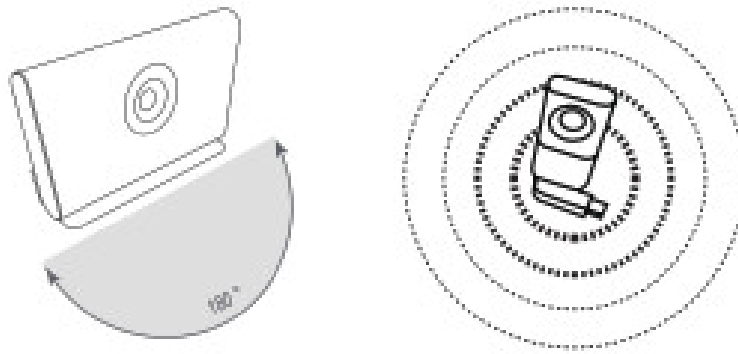
Power

USB bus power 5V

The Working Area



The Working Area



The working range of the dock is a half-circle in front of itself, with a radius of 5 meters. The dock should be placed as the same level as the dongle or within 1m higher than the dongle.

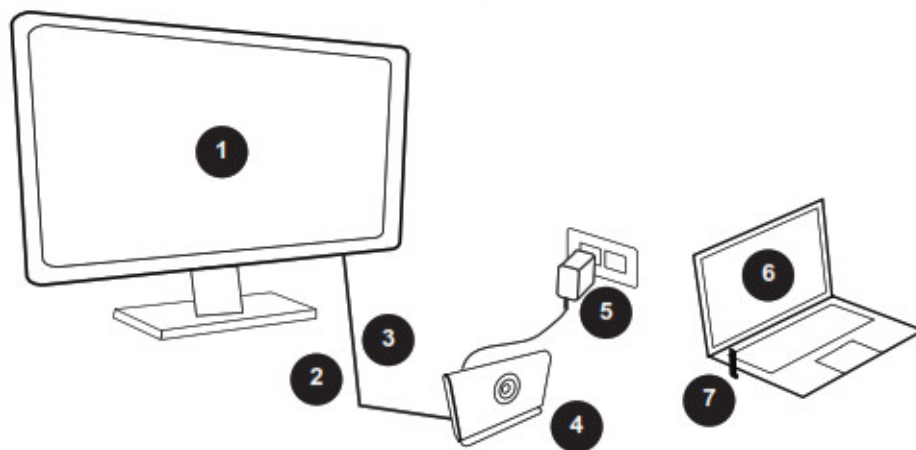
Our dongle is omnidirectional and can be plugged through the left or right side of the laptop.

The network connect session will disconnect after leaving the working range. However, the LED light or UI will only respond 60 seconds later.

Chapter 1 – Installing the dock

Step 1 – Setting Up The Dock

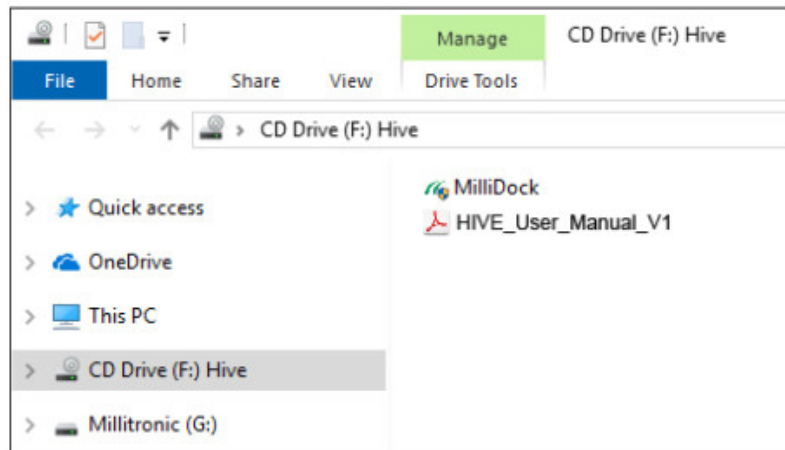
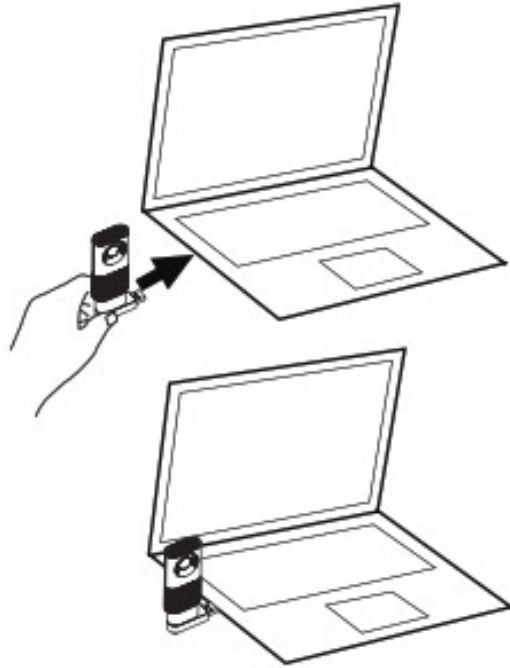
To set up the dock, do the following:



- | | |
|---------------------|---------------------|
| 1. External Monitor | 5. AC Power Adapter |
| 2. VGA Cable | 6. Laptop |
| 3. HDMI Cable | 7. Dongle |
| 4. Dock | |

- Connect the power adapter to the power connector of the dock.
- Plug the power adapter to an electrical socket.
- Turn on the dock by pressing the power button.
- If an external monitor is available, connect the external monitor to the appropriate connector (HDMI or VGA connector) on the dock.
- Position your laptop close to the dock, within 5m (16 feet). Make sure the dongle face to the dock.

Step 2 – Execution The Installer Driver Installation

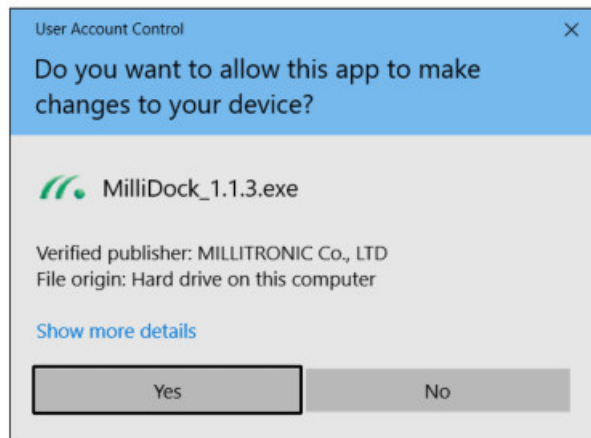


The USB driver should be enabled and the window automatically displayed, allowing you to follow the steps below. If no window pops up, please check the "CD Drive" under "This PC". When your laptop displays the contents as below,

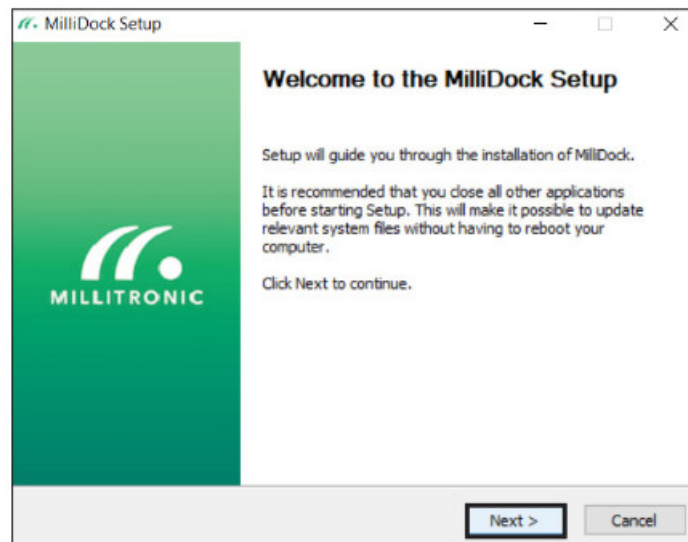
please double click  to continue.

Please note that the installer only installs the drivers for Hive. If your USB device requires a vendor driver, install your SB device driver. Visit <http://millitronic.com.tw> for new updates.

■ After executing the installer, it will guide you through the installation of the MilliDock application. Click "Yes" to continue the installation

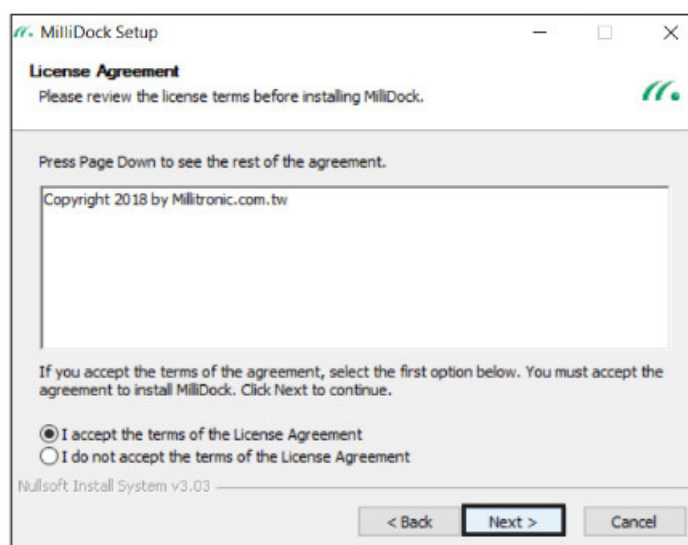


■ It will then display the screen below. Please click the “Next” button to continue with installation.

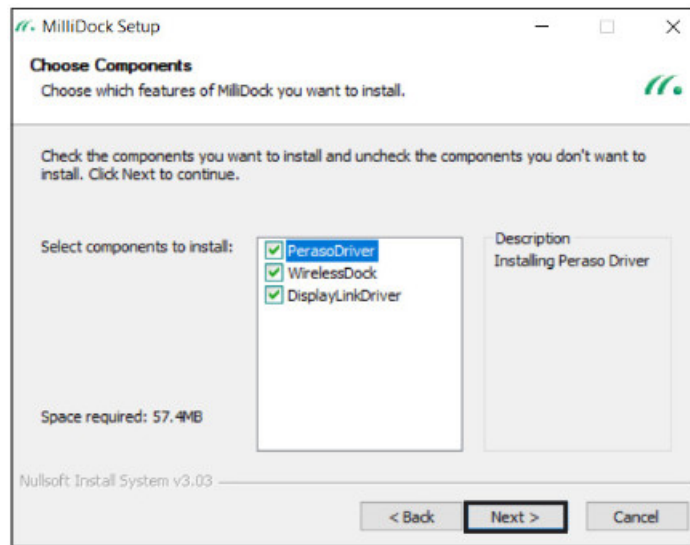


Step 3 – License Agreement And Choose components

■ The License Agreement is then shown. Choose “I accept ...” and click “Next” to continue.

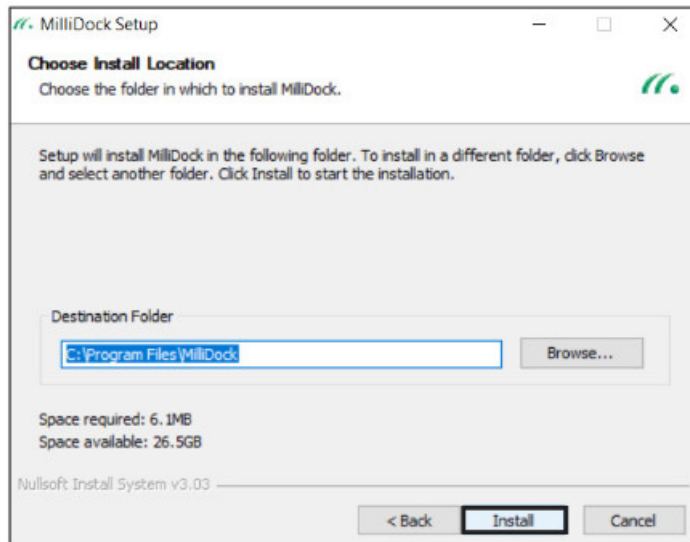


■ The user can select the components to install during this phase. All of these drivers are needed for MillitronicDock to operate. Click “Next” to continue with the installation.

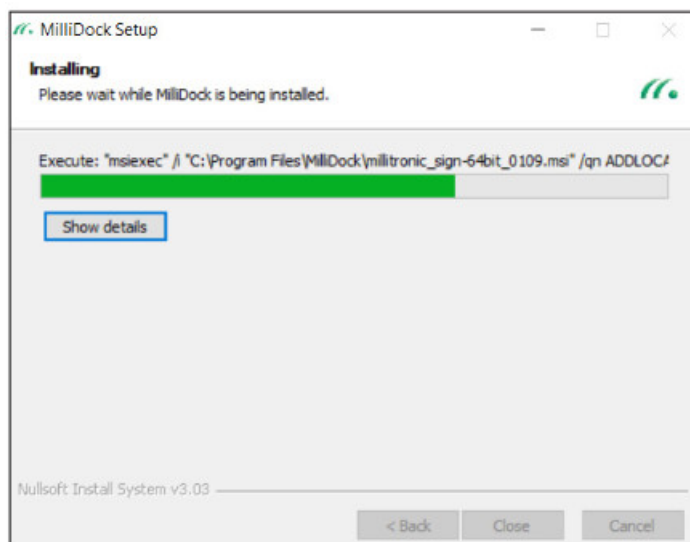


Step 4 – Choosing Install Location And Start To Install

- Choose the install path and click “Install” to start to begin the installation.

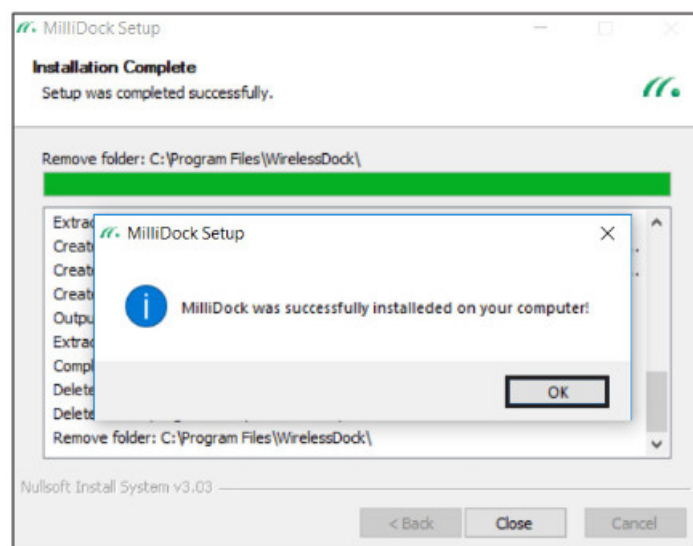


- Please wait for the installation process to complete.



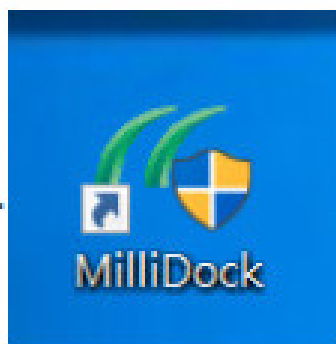
Step 5 – Installation Complete

- Click “OK” to close this window and complete the installation.

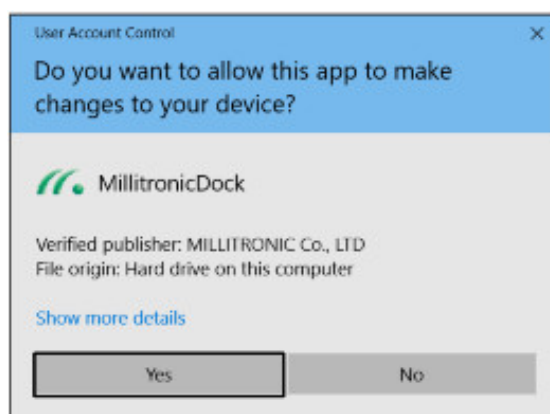


Chapter 2 – User Manual Using The “MilliDock” App

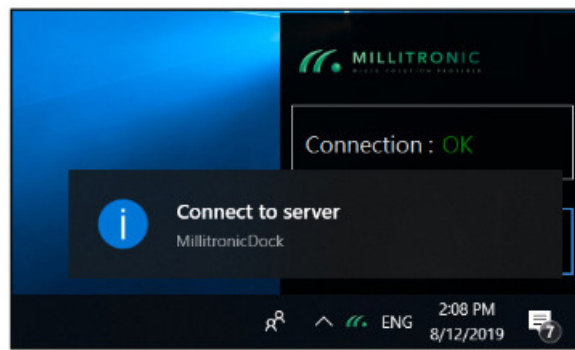
- After finishing the installation, the icon of the App will appear on your desktop. Click the icon to start the App.



- Click “Yes” to continue the MilliDock App.

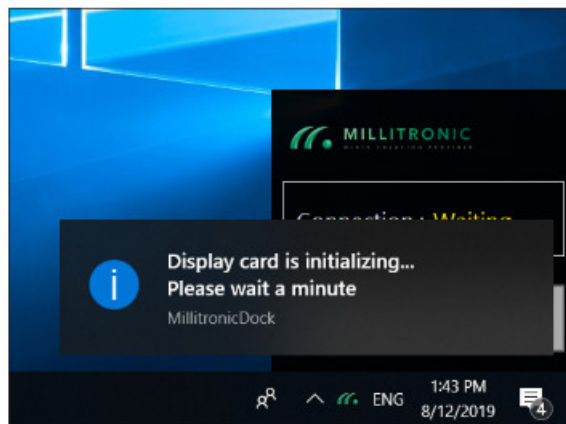


- This will automatically connect to the dock. Just wait for the connection.



Waiting For The First Time Auto Initializing

■ For the first time launch, the MilliDock will connect, then initialize and display automatically. It will show this message at the right-bottom corner. Just wait a minute for auto initializing the display card.

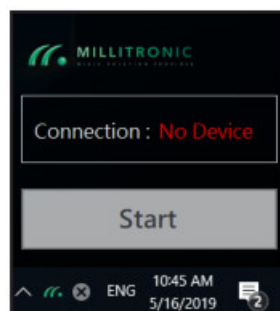


The Status Of The MilliDock App

There are several messages which indicate the status of the MilliDock App. The explanations for the different statuses are shown below:.

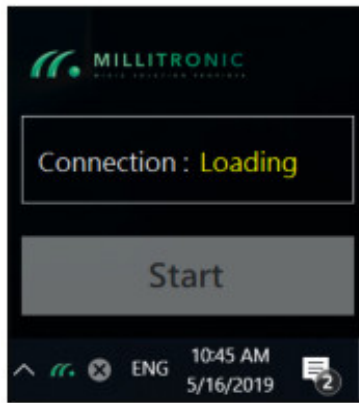
No Device:

■ If the dongle isn't plugged into the laptop when the app starts, it would display a "No Device" status and the start button will not be clickable.



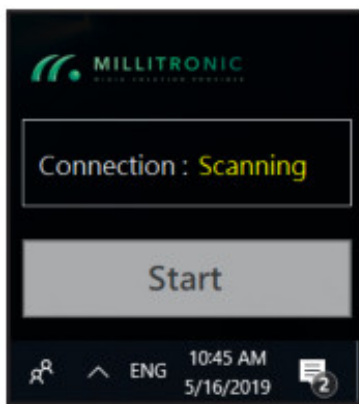
Loading:

■ When the dongle is detected, it will display a "Loading" message while the computer checks the settings of the dongle. Just wait for the process to finish.



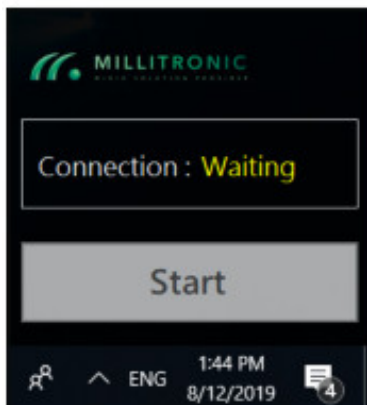
Scanning and Autoconnection:

■ When the dongle is not connected to the dock, it will display a “Scanning” message and proceed to search the SSID of the dock. The computer will automatically connect to the dock when the dock is scanned by the dongle. Please wait for the process to finish.



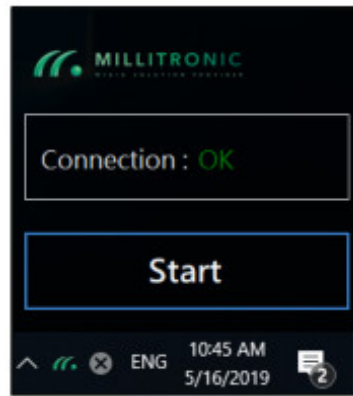
Waiting:

■ If the App shows this status, wait for a moment and it will change to other status. If the status keeps over 3 mins, exit the App and restart the App again.



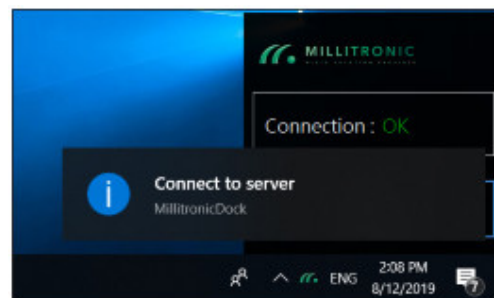
Ready to Start:

■ When the preparation is done, it will display an “OK” message and the start button will be enabled. Click “Start” button to start the dock link and display the screen.



Connection Success

- After few seconds, it would display a “Connect to server” message and the screen will be shown at the second monitor.



- You can check the status of the 2nd monitor under Windows advanced display settings

🏠 Advanced display settings

Display information



ASUS VP228

Display 1: Connected to Intel(R) HD Graphics 630

Desktop resolution	1920 × 1080
Active signal resolution	1920 × 1080
Refresh rate (Hz)	60 Hz
Bit depth	8-bit
Color format	RGB
Color space	Standard dynamic range (SDR)

[Display adapter properties for Display 1](#)



Mi TV

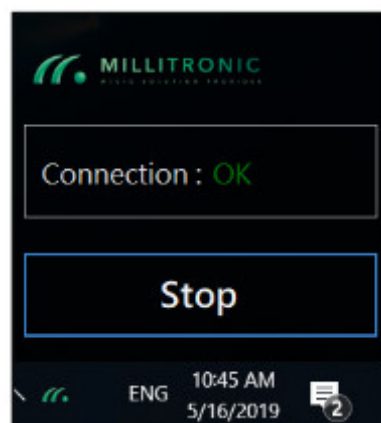
Display 2: Connected to CW-Dock

Desktop resolution	1920 × 1080
Active signal resolution	1920 × 1080
Refresh rate (Hz)	60 Hz
Bit depth	8-bit
Color format	RGB
Color space	Standard dynamic range (SDR)

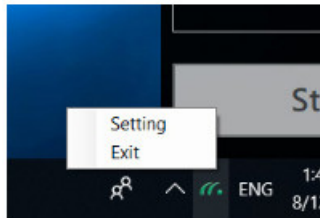
[Display adapter properties for Display 2](#)

Stop and Exit

- If you want to finish the display, you can click the “Stop” button to finish.

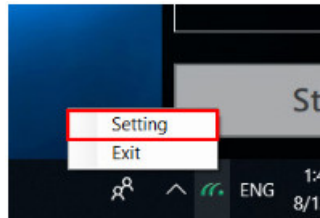


- Right-click the icon on the toolbox and click “Exit” to stop and terminate the App.



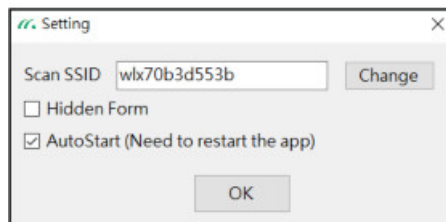
Settings

■ Right click the icon on the toolbox, click “Setting” on the menu and a form as shown below will appear.



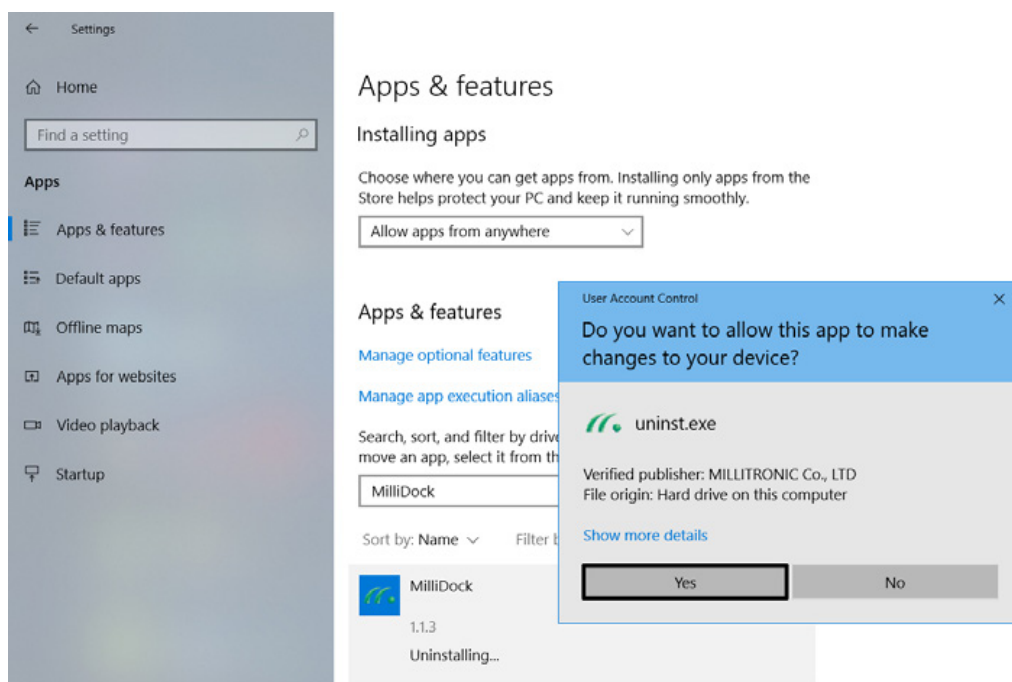
■ You can change the settings through the following steps:

1. Scan SSID: When more than one dock is present, you can select which dock to connect to by assigning the SSID of the target dock. Change the scanning SSID of the dock.
2. Hidden Form: Hide the main form.
3. AutoStart: Clicking AutoStart will allow the application to “Start” on default. If AutoStart is not selected, the application will not take action and the user will need to click the “Start” button.

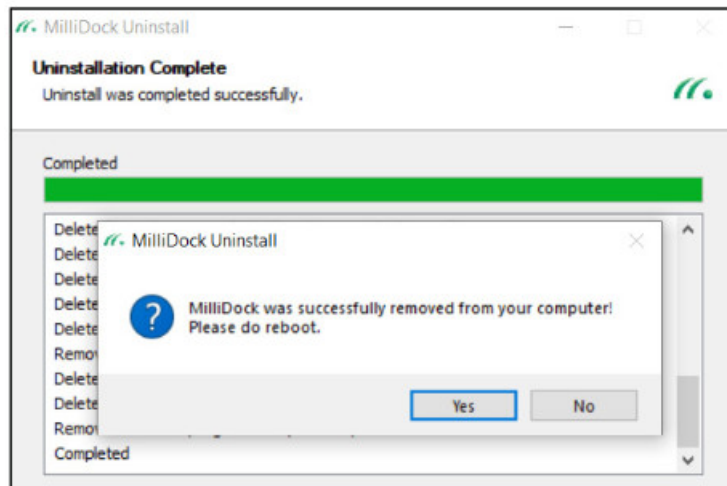


Uninstalling MilliDock App

1. Open “Apps & feature”, and then find “MilliDock”. Click the “Uninstall” button to uninstall MilliDock App.



2. Reboot your system to finish the uninstallation process.



Federal Communication Commission Interference Statement Millitronic MG360

FCC ID: 2AJASU3WG360

This equipment has been tested and found to comply with the limits for a Class B digital device, pursuant to Part 15 of the FCC Rules. These limits are designed to provide reasonable protection against harmful interference in a residential installation. This equipment generates, uses, and can radiate radio frequency energy and, if not installed and used in accordance with the instructions, may cause harmful interference to radio communications. However, there is no guarantee that interference will not occur in a particular installation. If this equipment does cause harmful interference to radio-television reception, which can be determined by turning the equipment off and on, the user is encouraged to try to correct the interference by one of the following measures:

- Reorient or relocate the receiving antenna.
- Increase the separation between the equipment and receiver.
- Connect the equipment into an outlet on a circuit different from that to which the receiver is connected.
- Consult the dealer or an experienced radio/TV technician for help.

IMPORTANT NOTE:

FCC Radiation Exposure Statement:

This equipment complies with FCC radiation exposure limits set forth for an uncontrolled environment. This equipment should be installed and operated with a minimum distance of 7 cm between the radiator & your body.

Multitronic Hive Wireless Dock Receiver

Contains FCC ID: 2AJAS2019M2

Federal Communication Commission Interference Statement

This equipment has been tested and found to comply with the limits for a Class B digital device, pursuant to Part 15 of the FCC Rules. These limits are designed to provide reasonable protection against harmful interference in a residential installation. This equipment generates, uses, and can radiate radio frequency energy and, if not installed and used in accordance with the instructions, may cause harmful interference to radio communications. However, there is no guarantee that interference will not occur in a particular installation. If this equipment does cause harmful interference to radio or television reception, which can be determined by turning the equipment off and on, the user is encouraged to try to correct the interference by one of the following measures:

- Reorient or relocate the receiving antenna.
- Increase the separation between the equipment and receiver.
- Connect the equipment into an outlet on a circuit different from that to which the receiver is connected.
- Consult the dealer or an experienced radio/TV technician for help.

FCC Caution: Any changes or modifications not expressly approved by the party responsible for compliance could void the user's authority to operate this equipment.

This device complies with Part 15 of the FCC Rules. Operation is subject to the following two conditions: (1) This device may not cause harmful interference, and (2) this device must accept any interference received, including interference that may cause undesired operation.

Professional installation is required

FCC Radiation Exposure Statement:

This equipment complies with FCC radiation exposure limits set forth for an uncontrolled environment. This equipment should be installed and operated with a minimum distance of 20cm between the radiator & your body.

IMPORTANT NOTE:

This module is intended for OEM integrator. The OEM integrator is responsible for compliance to all the rules that apply to the product into which this certified RF module is integrated. Additional testing and certification may be necessary when multiple modules are used.

USERS MANUAL OF THE END PRODUCT:

In the user manual of the end product, the end-user has to be informed to keep at least 20cm separation with the antenna while this end product is installed and operated. The end-user has to be informed that the FCC radio-frequency exposure guidelines for an uncontrolled environment can be satisfied.

The end-user has to also be informed that any changes or modifications not expressly approved by the manufacturer could void the user's authority to operate this equipment. This device complies with Part 15 of FCC rules. Operation is subject to the following two conditions: (1) this device may not cause harmful interference and (2) this device must accept any interference received, including interference that may cause undesired operation.

LABEL OF THE END PRODUCT:

The final end product must be labeled in a visible area with the following "Contains FCC ID:2AJAS2019M2".

This device complies with Part 15 of FCC rules. Operation is subject to the following two conditions: (1) this device may not cause harmful interference and (2) this device must accept any interference received, including interference that may cause undesired operation.

Bran	Model Name	AntennaType	Connector	Gain (dBi)
Multitronic	MLPBM2	Printed antenna	N/A	11

This Module may not be integrated into host devices that are addressed for operation inside airplanes/ satellites.

Appendix 1:

Wireless USB3.0 transmitter light signals

In USB 3.0 Port

Green	Blue	Red	Gray
Ready to Use	Connecting	Error	No power

In USB 2.0 Port

2 Green + Red	2 Green + Blue
Ready to Use	Connecting

If the signal is not green or blue, unplug and reconnect the transmitter.

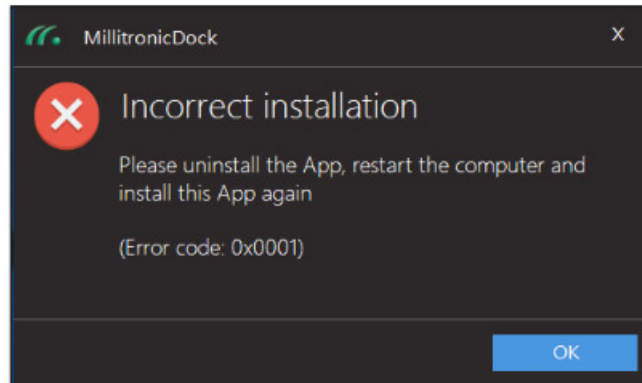
Appendix 2: Safety Information

- 1.This product can only be used in rooms at 26 degrees Celsius (Fahrenheit 78.8), please do not use the product in a non-ventilated environment.
2. Avoid covering the machine when the machine is in use.
- 3.Pull out from the bottom when removing the dongle

Appendix 3: Troubleshooting

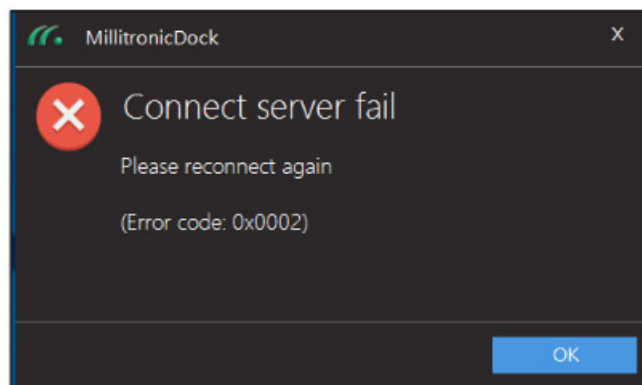
Not Detection Of The Driver Of The Components:

In this case, follow the steps of “Uninstall MilliDock App” to uninstall the MilliDock app and restart the laptop. einstall the app then launch again.



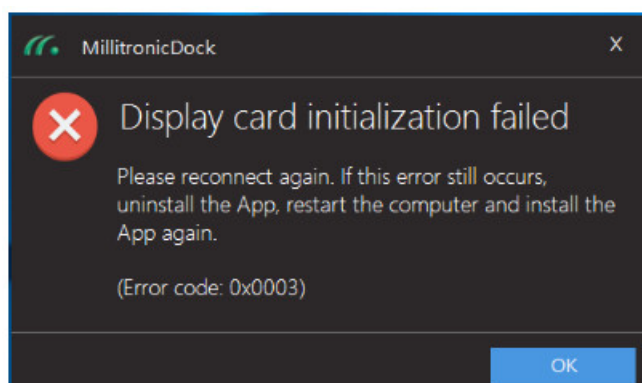
Connect Server Fail:

In this case, wait for 10 seconds then click “Start” again.



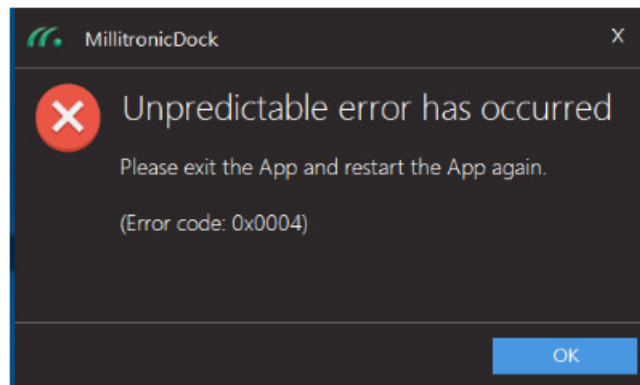
Display Card Initialization Failed:

In this case, wait for 10 seconds and reconnect again. If this error message still shows, follow the steps of “Uninstall illiDock App” to uninstall the MilliDock app and restart the laptop. Reinstall the app then launch again.



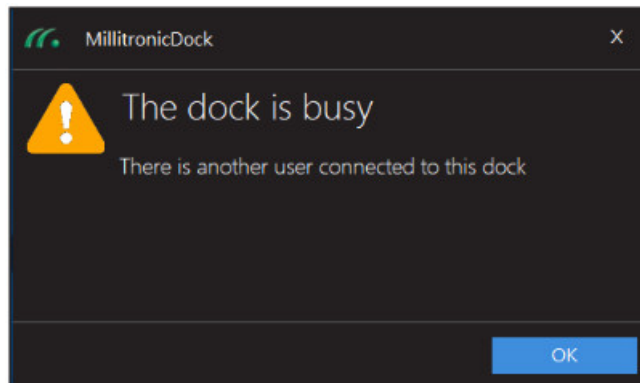
Unpredictable Error Has Occurred:

In this case, exit the App and restart the App again.



The Dock Is Busy:

There is another user connected to this dock. The dock is occupied by another user. If the dongle is unplugged before you stop the app or before the WiGig network is disconnect, the dock may hold this status for 1 min. In this case, wait 1 min and click "Start" again.



My USB device does NOT work:

The Hive installer only installs the drivers for Hive. If your USB device requires vender driver, install your USB device driver.

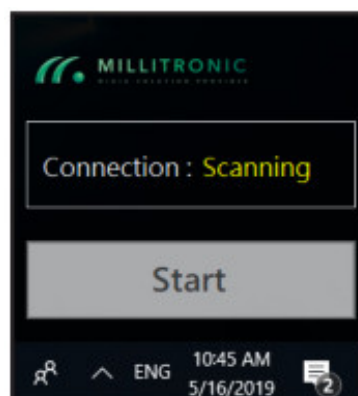
My WiFi can NOT work:

The dock creates a separate WiFi network and takes over internet access for the laptop. You can NOT access WiFi and the dock simultaneously. Connect an ethernet cable to the dock. You can access network through the dock.

Fail To Connect

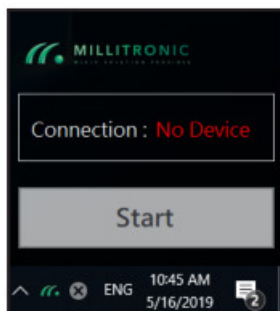
To The Dock:

The status keeps in "Scanning". Power cycle the dock and wait 1 min. Make sure the laptop display does not block the ock and there is no object between the dongle and the dock. Refer to "The Working Area"



No Device:

If the dongle already connects to the laptop but the app displays “No Device”, unplug the dongle and re-connect it to the laptop.



No image or if the image is stuck, or is blank on the 2nd monitor:

If the image on the 2nd monitor is not working properly, click “stop” on the app and click “start” again after 10s. If this does not work, power cycle the dock. Wait 1 min for the dock to reboot. Then connect to the dock again.

USB device can NOT work properly when connected to the dock:

The USB bus power of the dock is 5v 900mA, which is of the standard USB3.0. If your device requires more than 900mA, connect to a USB hub with external power.

We have tested most standard USB devices with Win10 in-box drivers. If your USB device uses a vendor driver, it may

not work properly. Please inform us if you experience such issues.

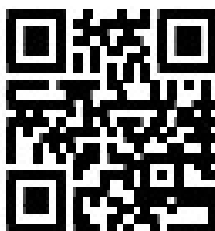
USB camera does NOT work smoothly:

We suggest using the compressed image format when running the USB camera. If the compressed image format is still not stable, please try a lower resolution like HD.




7F-6., No. 237, Sec. 1, Datong Rd.,
Xizhi Dist. New Taipei City 221,
Taiwan

www.millitronic.com.tw



www.millitronic.com

Documents / Resources

	MILLITRONIC HIVE Wireless USB3.0 transmitter Wireless Dock receiver [pdf] User Manual Wireless USB3.0 transmitter Wireless Dock receiver
---	---

References

- [MILLITRONIC](#)
- [MILLITRONIC](#)