

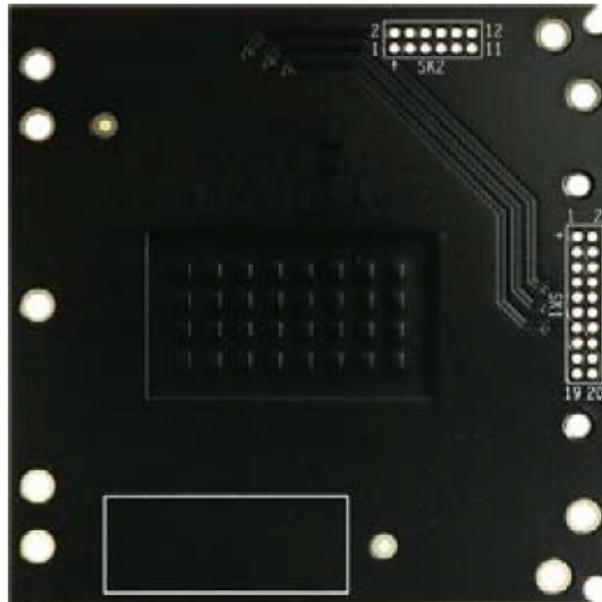


Contents [[hide](#)]

- 1 [Miliwave MWC-2142 5G NR-U Wireless Module](#)
- 2 [Specifications](#)
- 3 [Introduction](#)
- 4 [Technical Specifications](#)
- 5 [Installation](#)
- 6 [FCC](#)
- 7 [INTEGRATION INSTRUCTIONS](#)
- 8 [CONTACT INFORMATION](#)
- 9 [FAQs](#)
- 10 [Documents / Resources](#)
 - 10.1 [References](#)



Miliwave MWC-2142 5G NR-U Wireless Module



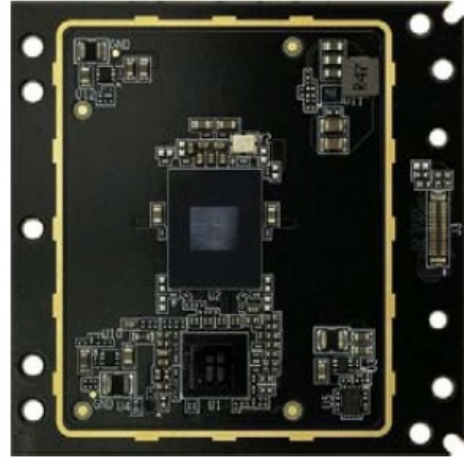
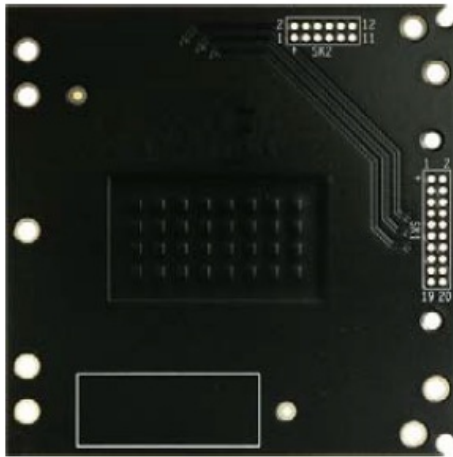
Specifications

- **Capacity:** Max 2.0Gbps
- **Latency:** Less than 1 millisecond round-trip
- **Security:** AES-128
- **I/O interface:** 34pin Receptacle Connector (PN: BM28B0.6-34DS/2-0.35V(51))

Introduction

Overview

- Miliwave's MWC-2142 module operates in the 60GHz unlicensed frequency band, IEEE802.11ad compliant, and is designed for wireless bridge communication, primarily for Line-of Sight (LOS) operation.
- The MWC-2142 module connects to a Linux based Host Communication Processor board via an available 34pin receptable connector. All required drivers and firmware is pre-installed on the MWC- 2142 module as a self-contained device .
- However, the MWC-2142 module would not be operational unless it is connected to the Linux-based Host Communication Processor board for wireless bridge communication.



<Figure 1. MWC-2142 Module>

- For more information, please contact Miliwave (sales@miliwave.co.kr)

Abbreviations and Acronym Definitions

Acronym	Definition
Gbps	Giga bits per second
Mbps	Mega bits per second
GHz	Giga Hertz
IEEE	Institute of Electrical and Electronics Engineers
LED	Light Emitting Diode
Los	Line of Sight
MCS	Modulation and Coding Scheme
MHz	Mega Hertz
PTP	Point to Point Communication
QAM	Quadrature amplitude modulation

MWC-2142 Module Description

The Miliwave's MWC-2142 module in conjunction with the Host Communication Processor board can function as wireless bridge communication. Main characteristics of the MWC-2142 module include:

- **Adaptive Modulation and Link Adaptation:** Up to 16QAM and MCS0-12 support
- **Transmit power:** EIRP max 40 dBm
- **Scan Range:** $\pm 45^\circ$ (Azimuth), $\pm 25^\circ$ (Elevation)
- **Advanced Security:** AES-128
- **Connectivity:** 34pin Receptacle Connector.
- **Receptacle Connector PN:** "BM28B0.6-34DS/2-0.35V(51)"
- **Matched Header Connector is** "BM28B0.6-34DP/2-0.35V(53)"

Technical Specifications

- **Capacity:** Max 2.0Gbps
- **Latency:** less than 1 millisecond round-trip
- **Security:** AES-128
- **I/O interface:** 34pin Receptacle Connector. (PN:BM28B0.6-34DS/2-0.35V(51))

Radio Specifications

- **Access Technology:** Single Carrier beam-forming physical layer
- **Frequencies:** 57GHz ~ 71GHz (CH1~CH6)
- **Channel Bandwidth:** 2.16 GHz
- **Antenna:** PCB Antenna
- **EIRP:** max 40 dBm

Mechanical, Power and Environmental Specification

- **Dimension:** 50mm x 50 x 4mm
- **Weight:** 15g
- **Power Consumption:** 12W(Max)
- **Operating Temperature:** $-40^\circ\text{C} \sim +85^\circ\text{C}$

- **Humidity:** 5%~95%

Module Throughput

- **MCS Index:** 0-12,
- **Modulation:** BPSK,QPSK,16QAM
- **Data Rate:** Max PHY rate 4620 Mbit/s

Installation

- The MWC-2142 could only be installed with Host Communication Processor board at the factory level.
- There is no user serviceable parts in the MWC-2142 module.
- The MWC-2142 module would not be operational unless it is connected to the Linux-based Host
- Communication Processor board for wireless bridge communication.
- To connect to the host communication processor board, connect through the MWC-2142's 34pin
- Receptacle Connector interface (PN : BM28B0.6-34DS/2-0.35V(51), Matched Header Connector is "BM28B0.6-34DP/2-0.35V(53)").
- The component surface must be shielded with metal using a heatsink, and sufficient heat sink must be used to dissipate heat according to the power consumption.

FCC

FCC Statement

This device complies with Part 15 of the FCC Rules.

Operation is subject to the following two conditions:

1. This device may not cause harmful interference, and
2. this device must accept any interference received, including interference that may cause undesired operation.

FCC Caution: Any changes or modifications not expressly approved by the party responsible for compliance could void the user's authority to operate this equipment.

The antenna(s) must be installed such that a minimum separation distance of at least 20 cm is maintained between the radiator (antenna) and all persons at all times.

INTEGRATION INSTRUCTIONS

- **List of applicable FCC rules**

- This module complies with part 15.255 of the FCC rules.
- Summarize the specific operational use conditions 15.255(a) General. Operation under the provisions of this section is not permitted for equipment used on satellites.

- **Typical Host Device Use cases**

- MWC-2142 Module is designed for outdoor fixed wireless host device such as Point to Point Broadband, Broadband Mesh, and 60GHz to the Home.



Point-to-Point Broadband
Next generation point-to-point broadband links over 2Gb/s, 1 mile, under \$200 per node



WiGig-to-the-Home
WiGig eliminates the need to run fiber from the 'pole to the home', significantly reducing the cost of multi-gigabit internet access



Broadband Mesh
Next generation gigabit internet architecture eliminates need for fiber backbone

- For more information, please contact your Miliwave (sales@miliwave.co.kr)

RF exposure considerations

- This module complies with FCC RF radiation exposure limits set forth for an uncontrolled environment. The module is limited to installation in mobile or fixed applications.
- At least 20 cm of separation distance between the transmitting antenna and the user's body must be maintained at all times.
- The host manual shall include the RF exposure statements. If RF exposure statements and use conditions are not provided, then the host product manufacturer is required to take responsibility of the module through a change in FCC ID (new application).

Antennas

- The module itself has antenna.

Label and compliance information

- The module is labeled with its own FCC. If the FCC ID is not visible when the module is installed inside another device, then the outside of the device into which the module is installed must also display a label referring to the enclosed module. In that case, the final end product must be labeled in a visible area with the following: “Contains FCC ID: 2AVCWMWC-2142” The host manual shall include the following regulatory statement: This device complies with Part 15 of the FCC Rules.

Operation is subject to the following two conditions:

1. This device may not cause harmful interference, and
2. this device must accept any interference received, including interference that may cause undesired operation.

Any changes or modifications not expressly approved by the party responsible for compliance could void the user’s authority to operate this equipment. The antenna(s) must be installed such that a minimum separation distance of at least 20 cm is maintained between the radiator (antenna) and all persons at all times. Information on test modes and additional testing requirements Testing of the host product with all the transmitters installed – referred to as the composite investigation test- is recommended, to verify that the host product meets all the applicable FCC rules. The host manufacturer can use the software to make the 60GHz transmit continuously

Additional testing, Part 15 Subpart B disclaimer

The modular transmitter is only FCC authorized for the specific rule parts (i.e., FCC transmitter rules) listed on the grant, and that the host product manufacturer is responsible for compliance to any other FCC rules that apply to the host not covered by the modular transmitter grant of certification. The host product may need to be evaluated against the FCC Part 15B criteria for unintentional radiators in order to be properly authorized for operation as a Part 15 digital device.

Warning

Additional testing and certification may be necessary when multiple modules are used. OEM integrators that they must use the equivalent antennas or C2PC will be required. Additional This device complies with part 15 of the FCC Rules.

Operation is subject to the following two conditions:

1. This device may not cause harmful interference, and
2. this device must accept any interference received, including interference that may cause undesired operation.

Revision History

Date	Written by	Rev.	Description
24.09.12	Sun.Lee	1.0	MWC-2142 User manual v1.0 release

CONTACT INFORMATION

- Address: Room 504, 106-40 Gwahakdnji-ro, Gangneung-si, Gangwon-do. 25440 KOREA.
- <http://www.miliwave.co.kr/>
- Tel. 070-8825-0630
- Email: sales@miliwave.co.kr

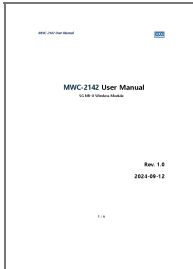
Copyright © Miliwave Inc. 2023. All rights reserved. No part of this document may be reproduced or transmitted in any form or by any means without prior written consent of Miliwave Co., Ltd. All specification supplied herein are subject to change without notice at any time.

FAQs

- Q: Does the module come with an antenna?

- **A:** Yes, the module itself has an antenna.

Documents / Resources

	Miliwave MWC-2142 5G NR-U Wireless Module [pdf] User Manual MWC-2142, MWC-2142 5G NR-U Wireless Module, MWC-2142, 5G NR-U Wireless Module, Wireless Module, Module
---	---

References

- [User Manual](#)

📁 miliwave

🔖 5G NR-U Wireless Module, miliwave, Module, MWC-2142, MWC-2142 5G NR-U Wireless Module, Wireless Module

Leave a comment

Your email address will not be published. Required fields are marked *

Comment *

Name

Email

Website

☐ Save my name, email, and website in this browser for the next time I comment.

Post Comment

Search:

e.g. whirlpool wrf535swhz

Search

[Manuals+](#) | [Upload](#) | [Deep Search](#) | [Privacy Policy](#) | [@manuals.plus](#) | [YouTube](#)

This website is an independent publication and is neither affiliated with nor endorsed by any of the trademark owners. The "Bluetooth®" word mark and logos are registered trademarks owned by Bluetooth SIG, Inc. The "Wi-Fi®" word mark and logos are registered trademarks owned by the Wi-Fi Alliance. Any use of these marks on this website does not imply any affiliation with or endorsement.