



Milestone MPTP-TUC-100KVM USB-C KVM Extender over HDBT User Manual

[Home](#) » [Milestone](#) » Milestone MPTP-TUC-100KVM USB-C KVM Extender over HDBT User Manual 

Milestone MPTP-TUC-100KVM USB-C KVM Extender
over HDBT User Manual

MPTP-TUC-100KVM

USB-C KVM Extender over HDBT



All Rights Reserved

Version: MPTP-TUC-100KVM_2022V1.2

Preface

Read this user manual carefully before using the product. Pictures shown in this manual are for reference only.

Different models and specifications are subject to real product.

This manual is only for operation instruction, please contact the local distributor for maintenance assistance. The functions described in this version were updated till April, 2021. In the constant effort to improve the product, we reserve the right to make functions or parameters changes without notice or obligation. Please refer to the dealers for the latest details.

SAFETY PRECAUTIONS

To ensure the best from the product, please read all instructions carefully before using the device. Save this manual for further reference.

- Unpack the equipment carefully and save the original box and packing material for possible future shipment
- Follow basic safety precautions to reduce the risk of fire, electrical shock and injury to persons.
- Do not dismantle the housing or modify the module. It may result in electrical shock or burn.
- Using supplies or parts not meeting the products' specifications may cause damage, deterioration or malfunction.
- Refer all servicing to qualified service personnel.
- To prevent fire or shock hazard, do not expose the unit to rain, moisture or install this product near water.
- Do not put any heavy items on the extension cable in case of extrusion.
- Do not remove the housing of the device as opening or removing housing may expose you to dangerous voltage or other hazards.
- Install the device in a place with fine ventilation to avoid damage caused by overheat.
- Keep the module away from liquids.
- Spillage into the housing may result in fire, electrical shock, or equipment damage. If an object or liquid falls or spills on to the housing, unplug the module immediately.
- Do not twist or pull by force ends of the cable. It can cause malfunction.
- Do not use liquid or aerosol cleaners to clean this unit. Always unplug the power to the device before cleaning.
- Unplug the power cord when left unused for a long period of time.

Information on disposal for scrapped devices: do not burn or mix with general household waste, please treat them as normal electrical wastes

Contents

- [1 Product Introduction](#)
- [2 Specification](#)
- [3 Panel Description](#)
- [4 System Connection](#)
- [5 Panel Drawing](#)
- [6 Documents / Resources](#)

Product Introduction

The MPTP-TUC-100KVM is an USB-C KVM Extender Kit that allows one USB channel to be transmitted over distances of up to 328ft(100m) at 4K@60Hz/1080p@60Hz via CATx cable.

The USB-C KVM Extender Kit includes one transmitter and one receiver. The transmitter features one USB-C input and one HDBT output. For the USB-C input, it provides an AV ideal interface for connecting to the Macbook

or other device with SlimPort output. The receiver features one HDMI output, one HDBT input and 4 USB 2.0 ports for connecting with KVM device such as camera, keyboard and mouse.

1.1 Features

- Supports HDMI 2.0b, 4K@60Hz 4:4:4, HDCP 2.2 compliant.
- USB-C input supports 4K@60Hz 4:4:4.
- Supports to transmit 4K/1080p signal up to 328ft(100m).
- Supports bi-direction 24V PoC power supply.
- 4 USB 2.0 ports for connecting with KVM device.
- Micro-USB for firmware upgrade.

1.2 Package List

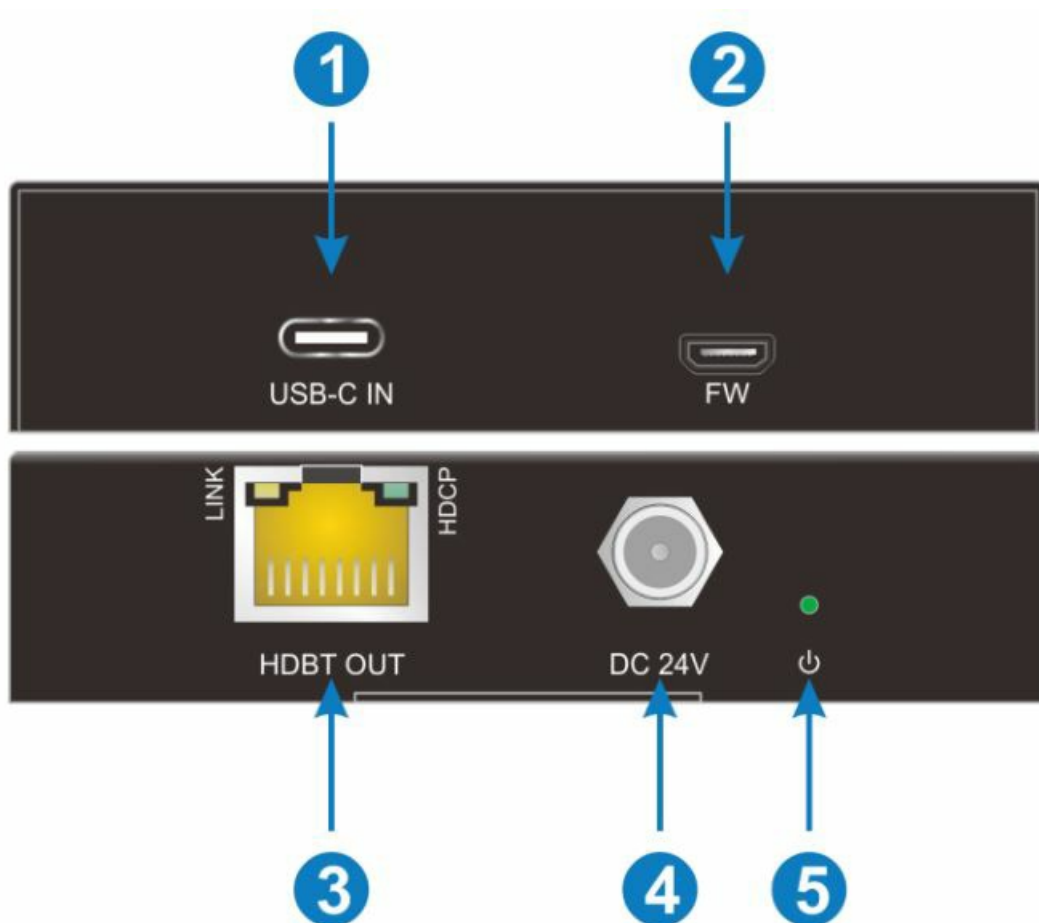
- 1 x Transmitter
- 1 x Receiver
- 1 x Power Adaptor (24VDC, 1.25A)
- 4 x Mounting Ears & 4 x Screws
- 1 x User Manual

Specification

	Transmitter	Receiver																
Video																		
Input	(1)USB-C IN	(1)HDBT IN																
Input Connector	(1) Type-C	(1) RJ45																
Input Resolution	Up to 4K@60Hz 4:4:4	Up to 4K@60Hz 4:4:4																
Output	(1) HDBT OUT	(1) HDMI OUT																
Output Connector	(1) RJ45	(1) Type-A female HDMI																
Output Resolution	Up to 4K@60Hz 4:4:4	Up to 4K@60Hz 4:4:4																
Control																		
Control Part	(4) DEVICE																	
Control Connector	(2) Type-A USB 2.0 5V500mA Power Supply (1) Type-A USB 2.0 5V1A Power Supply (1) Type-C USB 2.0 5V1A Power Supply																	
General																		
HDCP Version	Input: HDCP 2.2, HDCP 1.4 compliant Output: <table><tr><td><div>RX OUT TX IN</div></td><td>HDCP 2.2</td><td>HDCP 1.4</td><td>NO HDCP</td></tr><tr><td>HDCP 2.2</td><td>HDCP 2.2</td><td>NO IMAGE</td><td>NO IMAGE</td></tr><tr><td>HDCP 1.4</td><td>HDCP 2.2</td><td>HDCP 1.4</td><td>NO IMAGE</td></tr><tr><td>NO HDCP</td><td>NO HDCP</td><td>NO HDCP</td><td>NO HDCP</td></tr></table>		<div>RX OUT TX IN</div>	HDCP 2.2	HDCP 1.4	NO HDCP	HDCP 2.2	HDCP 2.2	NO IMAGE	NO IMAGE	HDCP 1.4	HDCP 2.2	HDCP 1.4	NO IMAGE	NO HDCP	NO HDCP	NO HDCP	NO HDCP
<div>RX OUT TX IN</div>	HDCP 2.2	HDCP 1.4	NO HDCP															
HDCP 2.2	HDCP 2.2	NO IMAGE	NO IMAGE															
HDCP 1.4	HDCP 2.2	HDCP 1.4	NO IMAGE															
NO HDCP	NO HDCP	NO HDCP	NO HDCP															
PoC	Supported bi-directional 24V PoC																	
HDMI V2.0 Cable Length	4K@60Hz 4:4:4 ≤ 5m, 4K@60Hz 4:2:0 ≤ 15m, 1080P ≤ 20m																	
Transmission Distance	4K/1080p ≤ 328 feet (100 meters)																	
Operation Temperature	-5 to +55℃(+23° to +131°F)																	
Storage Temperature	-25 to +70℃(-13° to +158°F)																	
Relative Humidity	10% to 90%, Non-condensing																	
Power Supply	Input:100V~240V AC; Output:24V DC 1.25A																	
Power Consumption	18.2 W																	
Dimension (W*H*D)	90 x 21.7 x 120 mm	90 x 21.7 x 120 mm																
Net Weight	260g	265g																

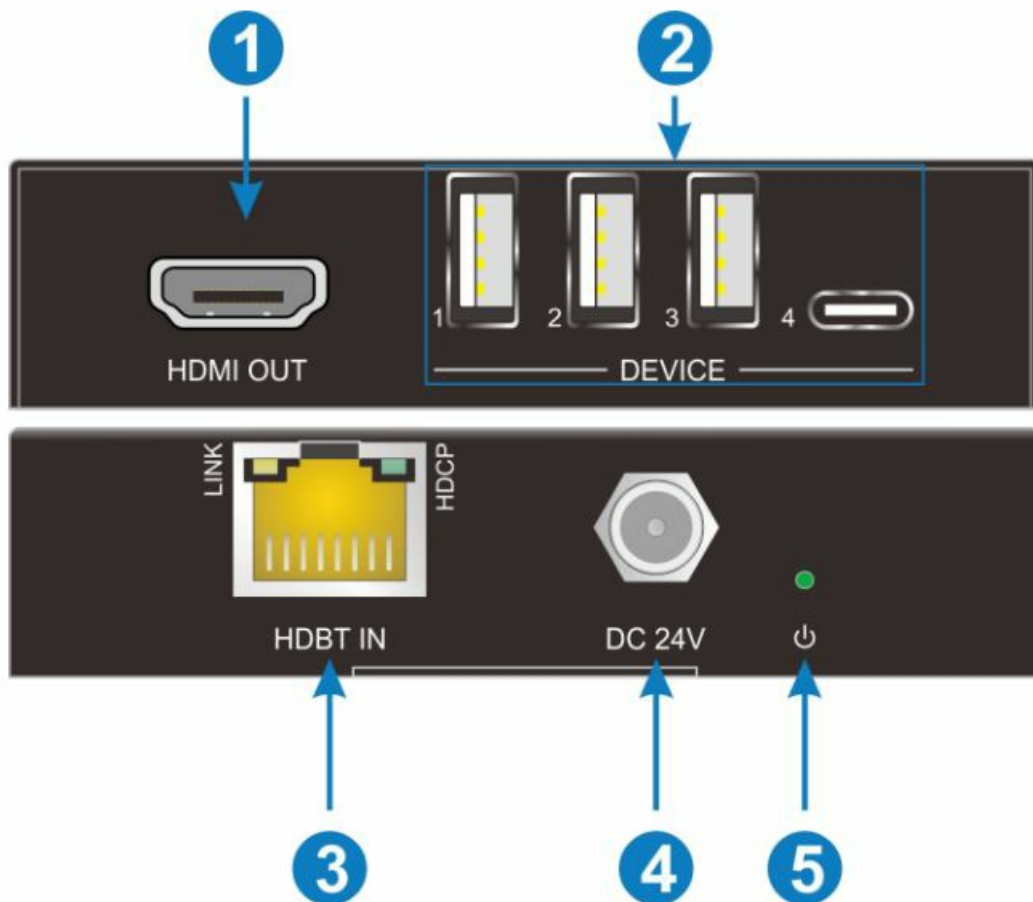
Panel Description

3.1 Transmitter



1. USB-C IN: Connects to the Macbook or other device with SlimPort output.
2. FW: Micro-USB for firmware upgrade.
3. HDBT OUT: Connects to the Macbook or other device with SlimPort output.
4. DC 24V: DC connector for the power adapter connection.
5. POWER LED: The LED illuminates green when the power is connected.

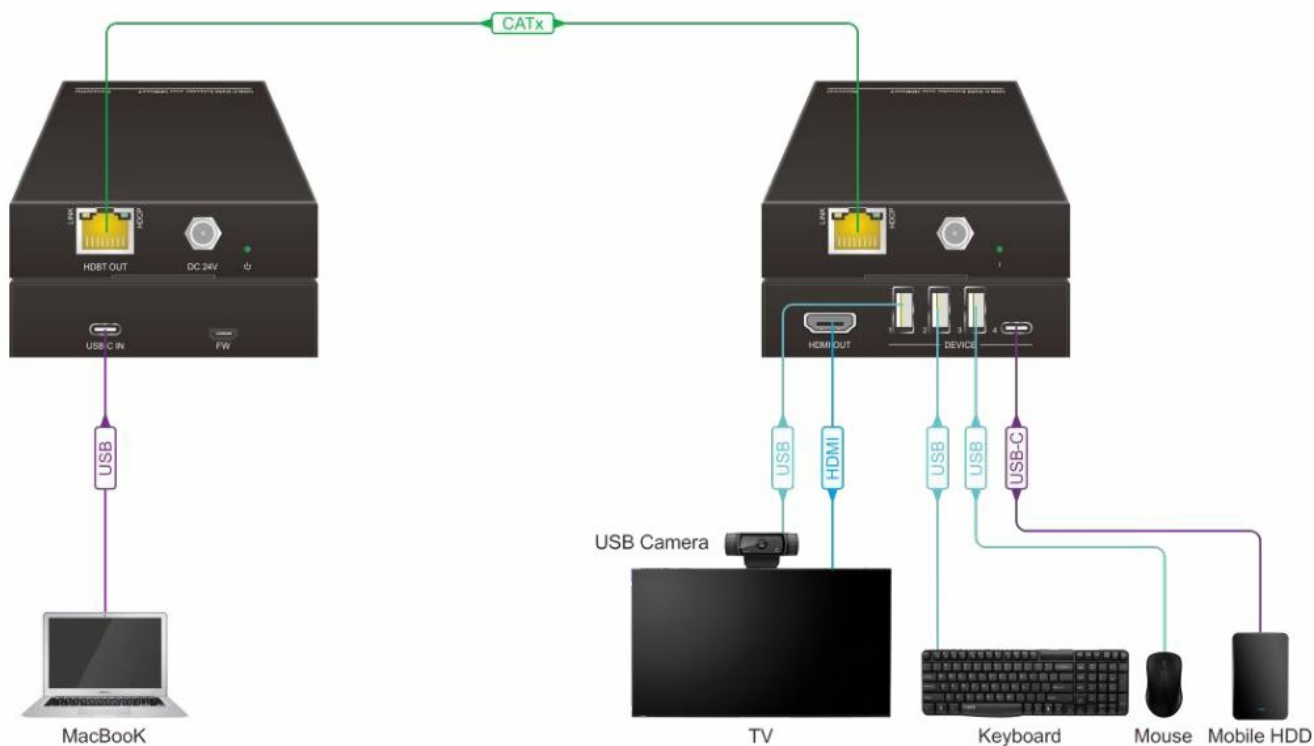
3.2 Receiver



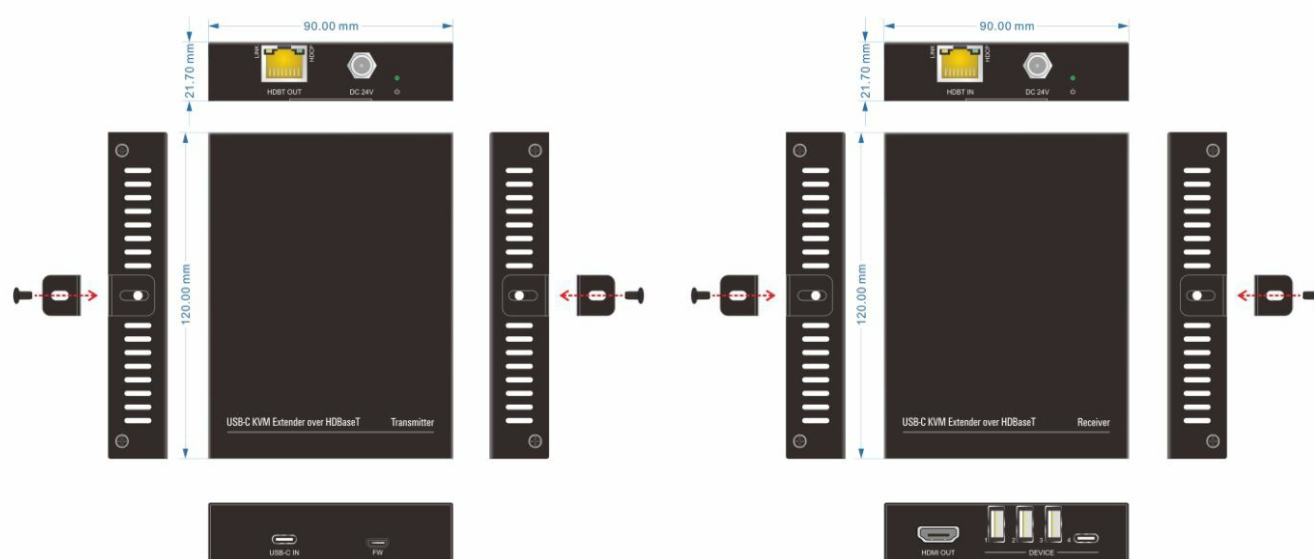
1. HDMI OUT: Connects to the HDMI display.
2. DEVICE: 4 USB 2.0 Ports for connecting KVM device.
3. HDBT IN: Connects to the HDBT OUT port of the switcher by a CATx cable.
4. DC 24V: DC connector for the power adapter connection.
5. POWER LED: The LED illuminates green when the power is connected.

System Connection


The following diagram illustrates typical input and output connection that can be utilized with the switcher:



Panel Drawing



Documents / Resources

 <p>User Manual</p> <p>Milestone</p> <p>MPTP-TUC-100KVM USB-C KVM Extender over HDBT</p> <p>All Rights Reserved</p>	<p>Milestone MPTP-TUC-100KVM USB-C KVM Extender over HDBT [pdf] User Manual MPTP-TUC-100KVM USB-C KVM Extender over HDBT, MPTP-TUC-100KVM, USB-C KVM Extender over HDBT, KVM Extender over HDBT, Extender over HDBT, over HDBT, HDBT</p>
--	--