



Milestone PRO MP-IP200E IP Streaming Encoder-Decoder Instruction Manual

[Home](#) » [Milestone PRO](#) » Milestone PRO MP-IP200E IP Streaming Encoder-Decoder Instruction Manual 

Contents

- [1 Milestone PRO MP-IP200E IP Streaming Encoder-Decoder](#)
- [2 Product Information](#)
- [3 Product Usage Instructions](#)
- [4 Product Introduction](#)
- [5 Features](#)
- [6 Package List](#)
- [7 Specification](#)
- [8 Panel Description](#)
- [9 System Connection](#)
- [10 Operation of DVSTool](#)
- [11 Documents / Resources](#)



Milestone PRO MP-IP200E IP Streaming Encoder-Decoder



Product Information

Product Name	MP-IP200E/ MP-IP200D
Product Type	1080p IP Streaming Encoder/Decoder
Features	Supports H.264, H.265 encoding and decoding. Adopt advanced universal coding technology. High-definition picture quality transmission over IP network. Support unicast and multicast switching. Large-scale application under 100M network. Support various audio and video scheduling controls. Rich interfaces, including RS232, IO, IR, network, etc. Dual power supply mode, standard DC interface and IEEE802.3at PoE.
Package List (MP-IP200E)	1x MP-IP200E Encoder (TX), 4x Rubber feet, 2x 3-pin Terminal Block, 1x User Manual
Package List (MP-IP200D)	1x MP-IP200D Decoder (RX), 4x Rubber feet, 3x 3-pin Terminal Block, 1x User Manual
Video Input (MP-IP200E)	HDMI In
Video Input Connector (MP-IP200E)	Type-A female HDMI
HDMI Input Resolution (MP-IP200E)	Up to 4K@60Hz 4:4:4
Video Output (MP-IP200E)	HDMI Out
Video Output Connector (MP-IP200E)	Type-A female HDMI
HDMI Output Resolution (MP-IP200E)	Up to 4K@60Hz 4:4:4
Control (MP-IP200E)	RS232, IR, LAN (PoE)
Control Connector (MP-IP200E)	3-pin terminal block, 3-pin terminal block, RJ45
Video Output (MP-IP200D)	HDMI Out
Video Output Connector (MP-IP200D)	Type-A female HDMI
HDMI Output Resolution (MP-IP200D)	Up to 1080p@60Hz 444
Audio Output (MP-IP200D)	Audio Out (L+R)
Audio Output Connector (MP-IP200D)	3-pin terminal block

Control (MP-IP200D)	RS232, IR, LAN (PoE)
Control Connector (MP-IP200D)	3-pin terminal block, 3-pin terminal block, RJ45
Video Encoding Standard	H.265
CAT-5E Cable Length	Up to 180 meters
External Power Supply	12V DC 1A; PoE supported.
Power Consumption	Encoder: 5W (Max); Decoder: 2W (Max)
Operation Temperature	-5 ~ +55
Storage Temperature	-25 ~ +70
Relative Humidity	10%-90%
Dimension (W*H*D)	150.0mm x 25.0mm x 100.0mm
Net Weight	Encoder: 355g, Decoder: 355g

Product Usage Instructions

MP-IP200E Encoder (TX)

- **HDMI IN:** Connects the HDMI video source device using a Type-A female HDMI port.
- **LOOP OUT:** Connects the HDMI display device using a Type-A female HDMI port.
- **RS232:** Supports point-to-point RS232 routing control using a 3-pin terminal block.

MP-IP200D Decoder (RX)

- **HDMI Out:** Connects the HDMI display device using a Type-A female HDMI port.
- **AUDIO OUT:** Provides audio output using a 3-pin terminal block.

Version: MP-IP200E/ MP-IP200D_2023V1.0

Product Introduction

The MP-IP200 is an IP Streaming Encoder/Decoder which use H.264 or H.265 standard to extend HDMI video, IR and RS232 control signals over IP network. It works with one control PC (Wake on LAN) and one switch whose transmission rate is 100Mbps or higher to control a variety of functions. The MP-IP200 features 1080p HDMI video switching, video live preview, audio de-embedding, IR&RS232 transmission, PoE, etc. The control software "DVSTool" merge all functions for user control the IP streaming system.

Features

- Supports H.264, H.265 encoding and decoding.
- Adopt advanced universal coding technology
- High-definition picture quality transmission over IP network.
- Support unicast and multicast switching
- Large-scale application under 100M network.

- Support various audio and video scheduling controls
- Rich interfaces, including RS232, IO, IR, network, etc.
- Dual power supply mode, standard DC interface and IEEE802.3at PoE

Package List

MP-IP200E

- 1x MP-IP200E Encoder (TX)
- 4x Rubber feet
- 2x 3-pin Terminal Block
- 1x User Manual

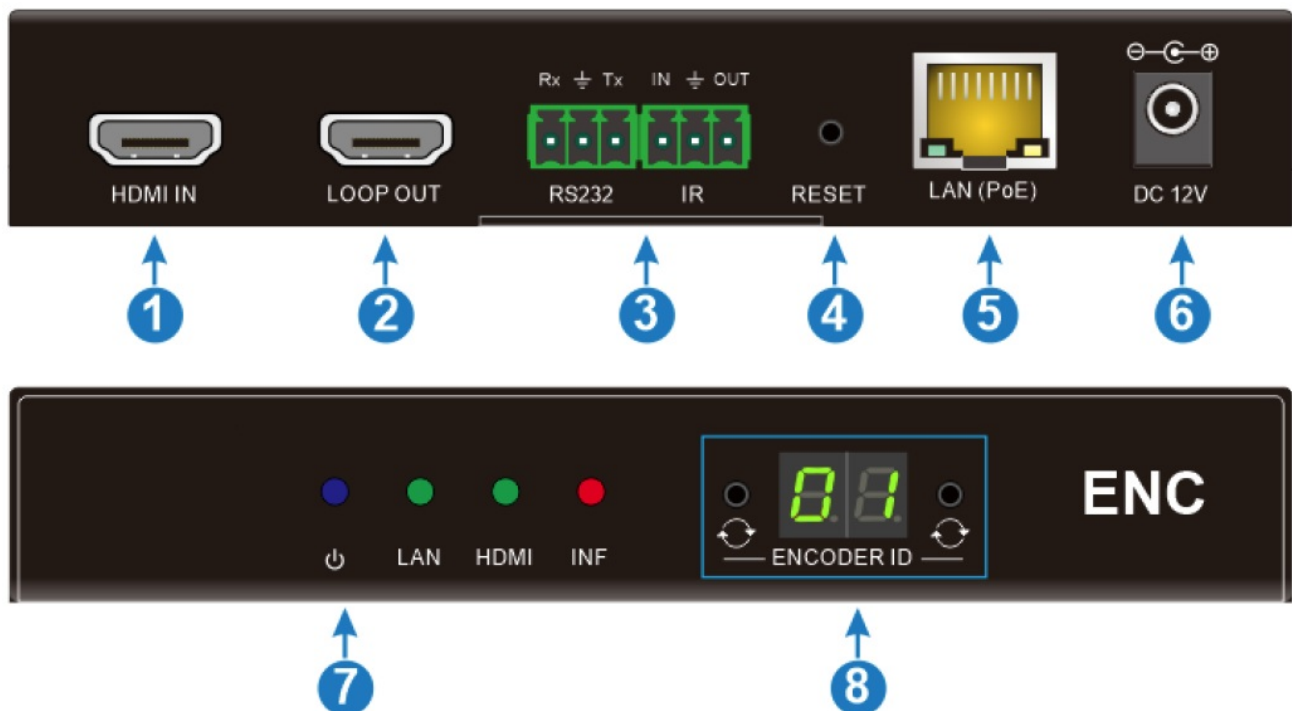
MP-IP200D

- 1x MP-IP200D Decoder (RX)
- 4x Rubber feet
- 3x 3-pin Terminal Block
- 1x User Manual

Specification

Panel Description

MP-IP200E Encoder



1. HDMI IN: Type-A female HDMI port to connect HDMI video source device.
2. LOOP OUT: Type-A female HDMI port to connect HDMI display device.
3. RS232: 3-pin terminal block for RS232 routing control. Supports point to point unicast.

IR: IO and IR infrared multiplexing interface. The IR port needs to be connected with an infrared receiver capable of deciphering the carrier.

4. RESET: Restore factory settings.
5. LAN (PoE): RJ45 port to connect directly to the decoder or a network switch using a CAT-5E cable.
6. DC 12V: DC port for AC power adapter connection.
7. Power LED: Illuminates blue when power on.

LAN LED: Illuminates green when the network is normal.

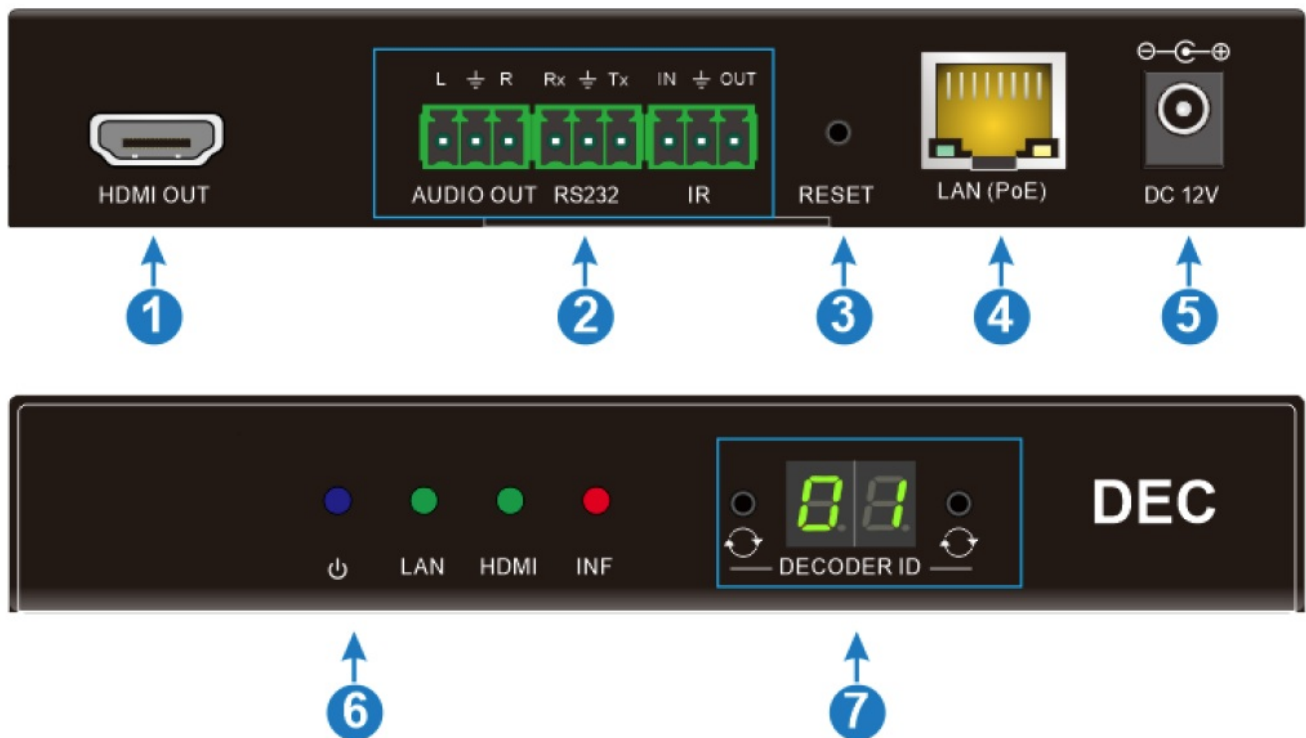
HDMI LED: Illuminates green when HDMI IN connected normally.

INF LED: Illuminates red when there is important information.

8. Button: Used to set Encoder ID to make it unique IP.

Digital Tube: Display Encoder device ID.

MP-IP200D Decoder



1. HDMI Out: Type-A female HDMI port to connect HDMI display device.
2. AUDIO OUT: 3-pin terminal block for audio out
RS232: 3-pin terminal block for RS232 routing control. Supports point to point unicast.
IR: IO and IR infrared multiplexing interface. The IR port needs to be connected with an infrared receiver capable of deciphering the carrier.
3. Reset: Restore factory settings.
4. LAN(PoE): RJ45 port to connect directly to the decoder or a network switch using a CAT-5E cable.
5. DC12V: DC port for AC power adapter connection.
6. Power LED: Illuminates blue when power on.
LAN LED: Illuminates green when the network is normal.
HDMI LED: Illuminates green when HDMI IN connected normally.
INF LED: Illuminates red when there is important information.
7. Button: Used to set Encoder ID to make it unique IP.
Digital Tube: Display Encoder device ID.

System Connection

Connection Type

There are three types of possible applications:

Extender (Point-to-Point)

In a point-to-point configuration, there is no need for a switch. Distribute full, compressed data up to 1080p@60Hz resolution and RS232, IR control signals over a single Cat-5E cable.

Splitter (One-to-Many)

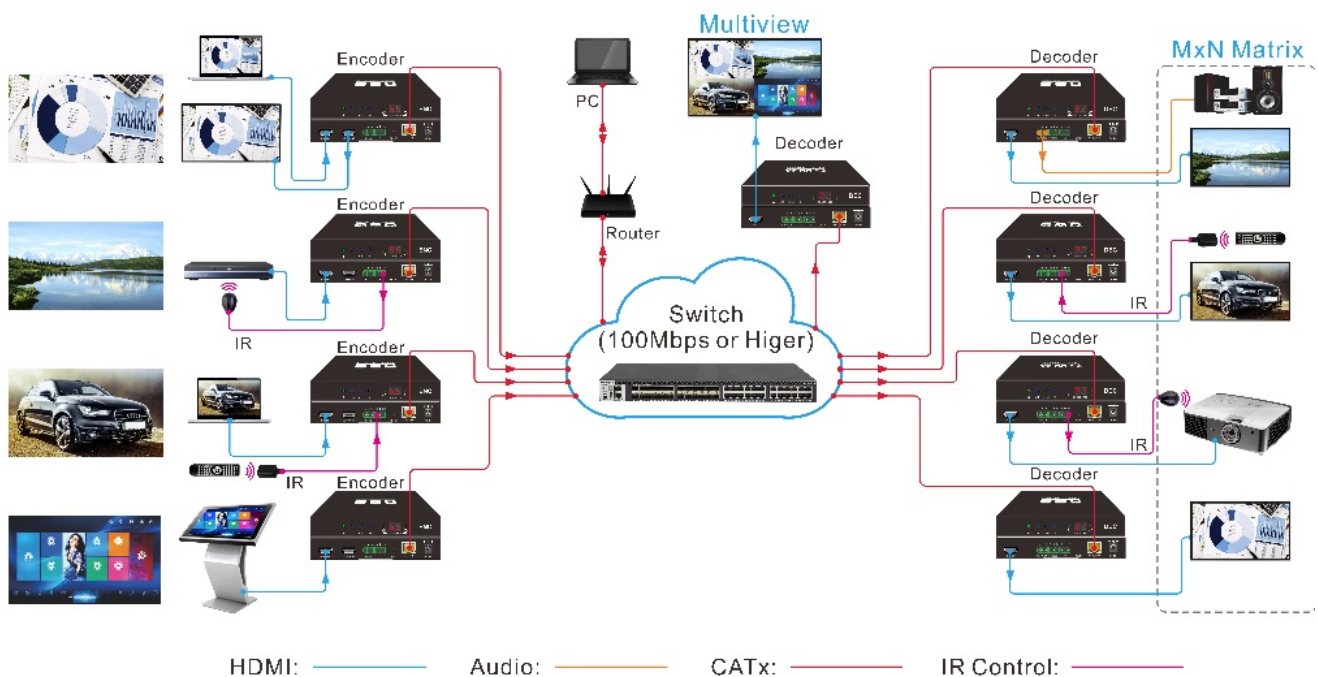
With only one encoder and one Ethernet switch (100Mbps or higher), any A/V signal can be flawlessly and instantly distributed to a near limitless number of decoder and screens, any number of times.

Matrix Switcher (Many-to-One, Many-to-Many)

The combination of switching and splitting enables a completely scalable matrix system. Independently route video, audio and RS232, IR control signal from any source to any endpoint. The IP streaming system allows for on-the-fly upgrading and a virtually unlimited number of I/O ports.

System Diagram

The following diagram illustrates typical input and output connections that can be utilized with the IP streaming encoder/decoder:



IP Streaming System

Hardware Setup

Please follow the steps below to complete the system installation:

1. Connect the video/graphics source device to the HDMI input connector on each TX unit.
2. (Optional) Connect the video display device to the HDMI output connector on each TX unit.
3. Connect the video display device to the HDMI output connector on each RX unit.
4. (Optional) Connect audio output device (e.g. speaker or headphone) to the audio output connector of the RX if

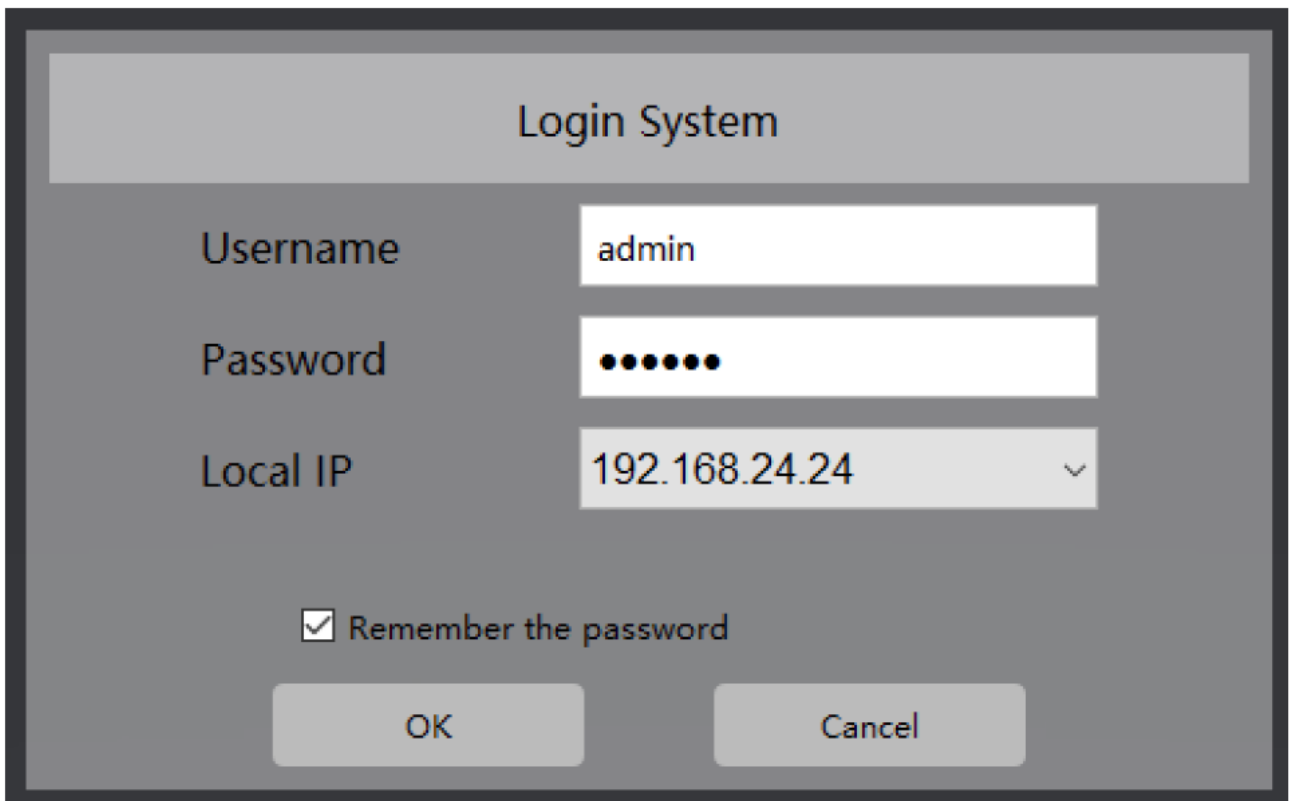
you want to test additional audio extension.

5. (Optional) Connect RS232 devices as needed if you want to test RS232 serial extension between TX and RX units.
6. (Optional) Connect compatible IR emitter modules to the IR output connectors of any TX or RX.
7. (Optional) Connect compatible IR receiver modules to the IR input connectors of any TX or RX.
8. Connect an Ethernet cable (Cat-6a recommended) from the LAN port each TX and RX unit to any available LAN port.
9. Connect the control PC to the LAN port of router device or to a Cat-x port of the switch (except the management/console port of the switch).
10. The hardware setup is now complete.

Operation of DVSTool

General Information

- The DVSTool is a control software used to configure and control signal extension, routing and switching between Encoder and Decoder units.
- Before proceeding ensure that the IP addresses of PC and all units are on the same local area network (LAN).
- After install the control software, start the application by double clicking on DVSTool.exe file

A screenshot of a 'Login System' dialog box. The dialog has a title bar at the top. Below the title bar, there are three input fields: 'Username' with the text 'admin', 'Password' with masked characters (dots), and 'Local IP' with the value '192.168.24.24' and a dropdown arrow. Below these fields is a checkbox labeled 'Remember the password' which is checked. At the bottom of the dialog are two buttons: 'OK' and 'Cancel'.

- **Username:** admin
- **Password:** 123456

After starting the software, click the setting icon in the upper right corner to enter the setting interface:

System settings
?
X

Device
Source
Output
Place
User
IPC
Data
Status
System
Log

Select NIC
192.168.0.45

Search
Add Manually
Upgrade
Reboot
Factory Reset
Device Reset

Device Info

All	No.	Device ID	IP Addr	Device
<input type="checkbox"/>	1	11	192.168.0.11	N/A
<input type="checkbox"/>	2	15	192.168.0.15	N/A
<input type="checkbox"/>	3	14	192.168.0.14	N/A
<input type="checkbox"/>	4	13	192.168.0.13	N/A
<input type="checkbox"/>	5	12	192.168.0.12	N/A
<input type="checkbox"/>	6	10	192.168.0.10	N/A

User-defined

☒ Device Model

☒ Device Name

Modify

Modify One

☐ Device ID

☐ Key Lock
☐ Lock
☐ Unlock

☐ Mac
☐ Fixed
☐ Random

☐ Device Type
☐ Encoder
☐ Decoder

☐ Network Params

IP

Subnet Mask
255
255
255
0

Gateway

OK

Batch Modification

☐ Start Device ID

☐ Key Lock
☒ Lock
☐ Unlock

☐ Mac
☐ Fixed
☐ Random

☐ Device Type
☐ Encoder
☐ Decoder

☐ Network Params

Start IP

End IP

Subnet Mask

Gateway

OK

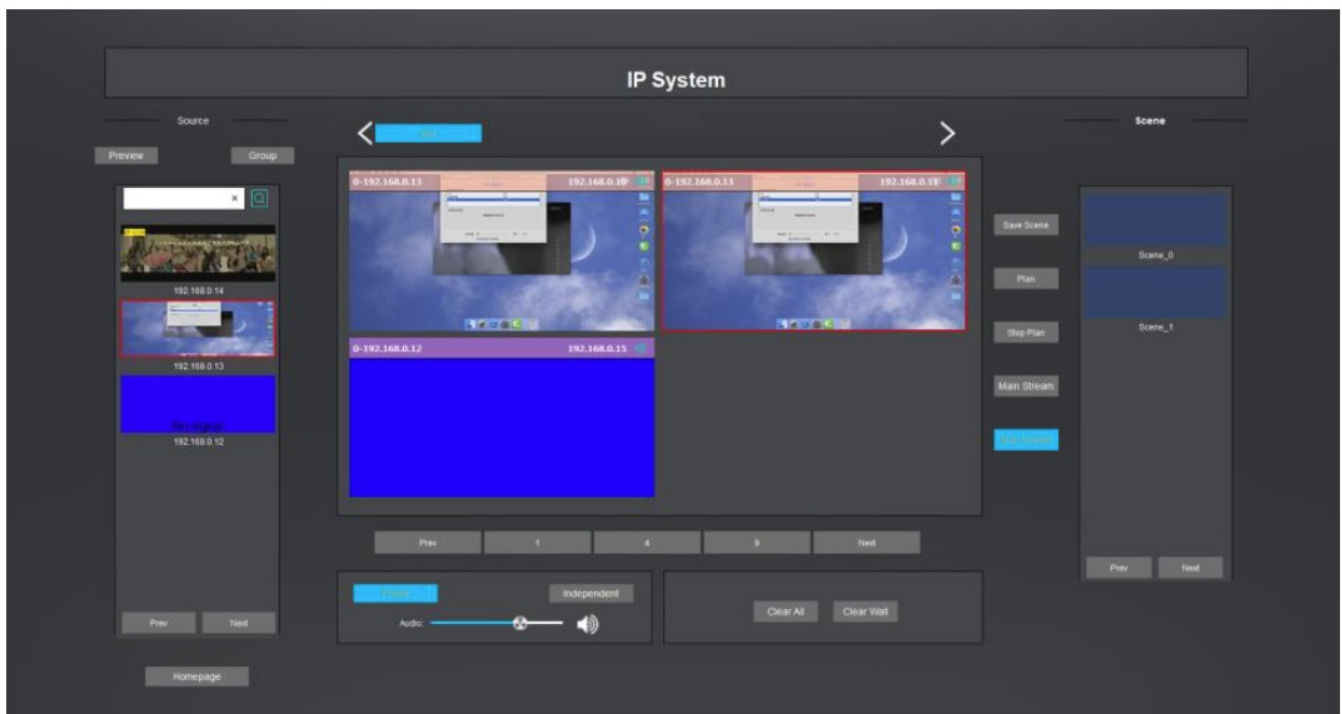
Maximize
Exit

System configuration includes the following main functions:

1. Device: perform operations such as device model, device name, ID, IP and other parameter settings, and restore defaults.
2. Source: Carry out information source grouping, and bind the corresponding grouping to the input.
3. Output: Mainly to add the output to the device status list for operation and maintenance management, and places can be bound.
4. Place: Mainly realizes output device area management and screen binding settings.
5. User management: It mainly realizes that different users use different input groups and place authorization.
6. System log: Generate a log and view it.
7. Data management: mainly to update the interface and functions of the WINDOS client to the PAD client.
8. Status: check the current online status of the equipment, which is convenient for maintenance.

IP System Setting

Control operations include the following main functions:



1. Signal source: It can be previewed and switched by group. It supports keyword search for signal sources. Select the preview window or signal and drag it to the output node on the virtual large screen to open the window. window (the opened window is set according to the output node), and the signal can be turned up and down with more than five preview windows.
2. Large screen switching: When creating multiple large screens, you can switch the large screens arbitrarily, and you can turn pages left and right if you exceed five
3. Screen operation area: display a virtual large-screen image; window can be opened, and the virtual large screen can be switched to display the number of output nodes on one page (can be switched to display 1, 4, or 9 output nodes), and the virtual large screen exceeds the setting When outputting the number of nodes, you can turn the page up and down.
4. Volume control: Select any output node on the virtual large screen, the selected output node can turn on and off the sound, and control the volume. You can choose whether the audio follows the video switch.

Devices Management

1. There are multiple IPs on the computer, you need to select the corresponding IP on the login interface, and then modify or configure the parameters.
2. Any modification of parameters requires re-searching.

Device model and name modification

User-defined

☐ Device Model

☐ Device Name

Modify

Check the device that needs to be modified, then check the parameter that needs to be modified, then set the parameter value, and click Modify.
Then search again.

ID, IP modification

Modify One

☐ Device ID

☒ Key Lock

☐ Lock
☒ Unlock

☐ Mac

☐ Fixed
☐ Random

☐ Device Type

☐ Encoder
☐ Decoder

☐ Network Params

IP

Subnet Mask

Gateway

OK

Check the device that needs to be modified, check the parameter that needs to be modified, set the parameter value, and click Modify. Search again
ID and IP support batch modification

Output resolution, image, audio

Output Property

Resolution	1920x1080P60
接口模式:	HDMI

Output Image

Lightness:	<input type="range" value="50"/> 50
Contrast:	<input type="range" value="50"/> 50
Hue:	<input type="range" value="50"/> 50
Saturation:	<input type="range" value="40"/> 40
Restore Default:	<button>Set Default</button>

Audio Output Setting

Audio Output	HDMI&&3.5mm
--------------	-------------

Select or check the Decoder device, in the device information, you can modify the output resolution, output image, audio output.

Setting

Search
Add Manually
Upgrade
Reboot
Factory Reset
Device Reset

Image Quality Setting
OSD Setting
EDID Setting
Restore EDID
Peripheral Setting

Device Info

All	No.	Device ID	IP Addr	Device	Device Basic Infomation	
<input checked="" type="checkbox"/>	1	40	192.168.11.40	N/A	Device Model:	N/A
					Device Name:	N/A

- Select the device and choose OSD Setting

192.168.11.88

OsD Content

Position X

20

≤200

Position Y

20

≤200

Font Type

Microsoft Yahei

Font Width

26

≤200

Font Height

30

≤200

Color

Background Color

Background Transparent Status

On

Off

Background Opacity

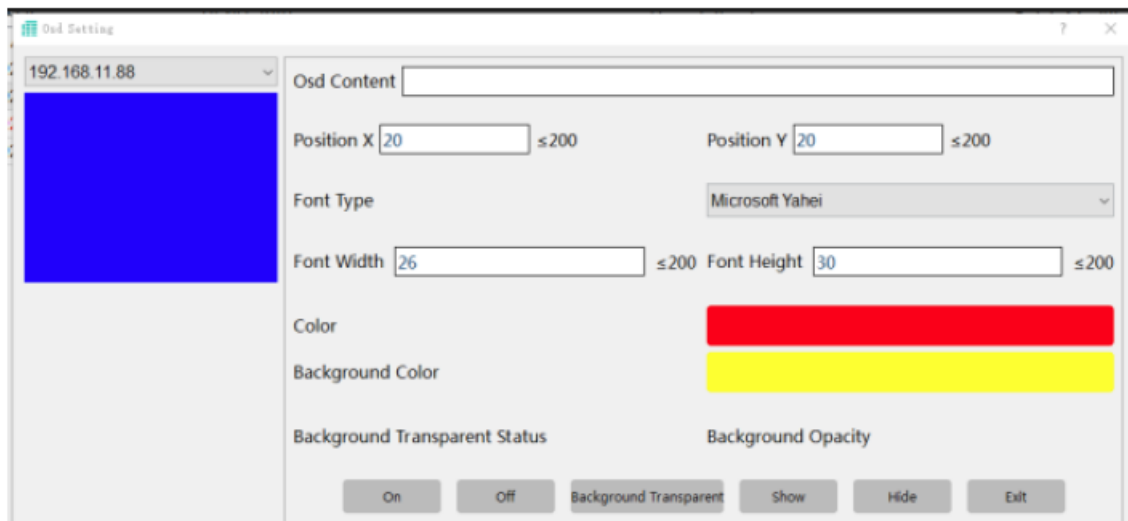
Background Transparent

Show

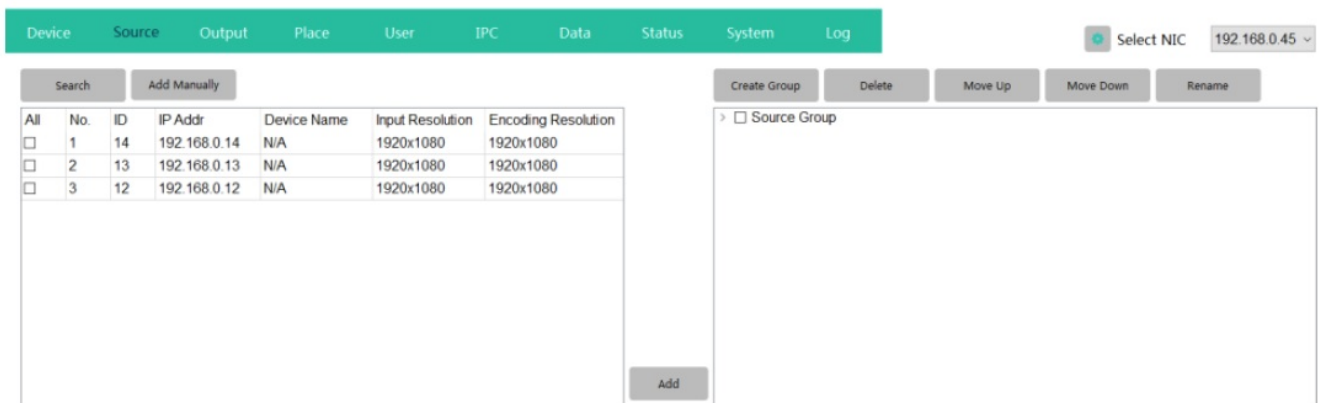
Hide

Exit

- Select the device and choose EDID Setting:



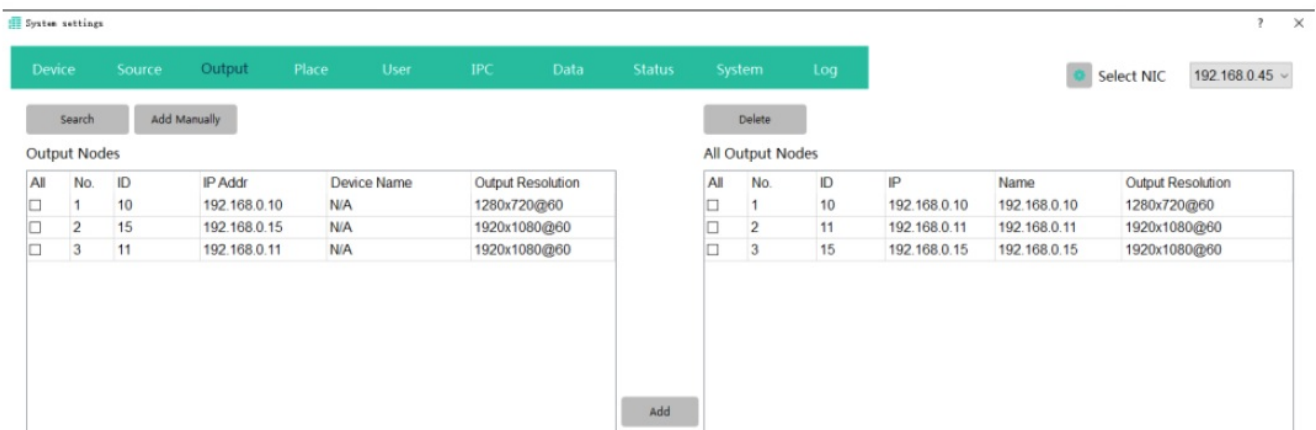
Source Management



Carry out source grouping, and group the corresponding input binding

1. Select the signal list,
2. Click Add Group,
3. Double-click the added group to modify the group name,
4. Select the corresponding group name, and check the input source list on the left.
5. Click Add.

Output Management



It is mainly to add the output to the device status list for management, and at the same time, the binding can be realized on the site.

1. Select the output device that needs to be added to the maintenance binding list,
2. Click Add,
3. You can view the added devices on the right.

Note: If the device name is in N/A state, the name of the maintenance list is automatically changed to the IP address of the device.

Place

Device Source Output **Place** User IPC Data Status System Log

Select NIC 192.168.0.45

Matrics Delete

Screen List

All	ID	Name	Type
<input type="checkbox"/>	1	test	Matrix

Add

Create Place Delete

Place

- Group_1
 - test

Follow the steps as shown in the image above. Implement matrix group binding.

1. Click Manage Matrix Group
2. Set ID and name, ID needs to be unique
3. Click Add
4. Select the added matrix group
5. Click Add Node. Pop-up screen and output node binding window
6. Select the corresponding output node. Can only choose idle nodes
7. Click Add, and the list of nodes bound to this group is displayed on the right
8. Click to close

Note: This operation takes effect directly without confirmation.

User

System settings

DeviceSourceOutputPlaceUserIPCDataStatusSystemLog

Select NIC192.168.24.24

Users

ID	Account	Password	Permission
0	admin	123456	Administrator

Username

Password

PermissionAdministrator

Add UserDelete UserModify User

Permission Management

Source And Group

> Source Group

Places

> Place

Maximize

Exit

Note: The default account admin has full authority and supports password modification. Other users must be authorized by admin. Other users can modify their passwords by themselves, and authorization is not allowed

IPC

DeviceSourceOutputPlaceUserIPCDataStatusSystemLog

Select NIC192.168.24.24

SearchClearPasswordAuth

Add RtspImport

All	No.	IP	Username	Password	Address	Main t	Substre
<input type="checkbox"/>	1	192.168.24.46				0x0	0x0
<input type="checkbox"/>	2	192.168.24.22				0x0	0x0
<input type="checkbox"/>	3	192.168.24.211				0x0	0x0
<input type="checkbox"/>	4	192.168.24.38				0x0	0x0
<input type="checkbox"/>	5	192.168.24.49				0x0	0x0
<input type="checkbox"/>	6	192.168.24.21				0x0	0x0
<input type="checkbox"/>	7	192.168.24.43				0x0	0x0
<input type="checkbox"/>	8	192.168.24.19				0x0	0x0
<input type="checkbox"/>	9	192.168.24.28				0x0	0x0
<input type="checkbox"/>	10	192.168.24.37				0x0	0x0

Add

Add GroupDeleteMove UpMove DownRename

> ☐ Source Group

This function is unavailable.

Data

System settings

Device

Source

Output

Place

User

IPC

Data

Status

System

Log

Select NIC 192.168.24.24

Download Management

Local IP: 192.168.24.24

Transmission Information

Open Server

Upload Management

Remote IP:

Transmission Information

Upload Data

Upload Configuration

Realize data transmission between windows client and Android client in the same LAN.

1. Turn on the server, and then upload data to the host computer. After the upload is successful, it will prompt that the device uploaded data and updated successfully.
2. Fill in the IP of the corresponding device in the remote IP, and open the server of the device, and then click Upload Data or Upload Configuration.

When uploading, it will prompt that the connection to the device (IP of the device) is successful and the sending (IP of the device) is successful

Status

On the device status page, you can see the status of the added devices for source management and output management.

System settings

Device

Source

Output

Place

User

IPC

Data

Status

System

Log

Select NIC 192.168.24.24

ID	IP	Device Name	Device Type	Status	Sent	Received	CPU	Memory
----	----	-------------	-------------	--------	------	----------	-----	--------

System

This page is design for system setting.

System settings

Device

Source

Output

Place

User

IPC

Data

Status

System

Log

Select NIC 192.168.24.24

System Setting

Preview Mode:

PC Window Operation Mode:

Multi-vlans

☒ Source
 ☒ Window
 ☒ Scene

Mouse Mode

Off

Log

The system log can be selected by level and filtered by time period. After filtering, click OK, and the corresponding log will pop up below; click Show All, and all logs will pop up.

System settings

Device

Source

Output

Place

User

IPC

Data

Status

System

Log

Select NIC

192.168.24.24

Level

☒ Prompt

☒ Warning

☒ Error

Time Period

Start Time

2023-4-27 16:43:55

End Time

2023-5-4 16:43:55

OK

Show All

Clear Log

All	Level	Time	Message
-----	-------	------	---------


Documents / Resources

User Manual

Milestone

MP-IP200E/MP-IP200D

1080p IP Streaming Encoder/Decoder



All Rights Reserved

Version: MP-IP200E/MP-IP200D_202312

[Milestone PRO MP-IP200E IP Streaming Encoder-Decoder](#) [pdf] Instruction Manual

MP-IP200E IP Streaming Encoder-Decoder, MP-IP200E, IP Streaming Encoder-Decoder, Streaming Encoder-Decoder, Encoder-Decoder, Decoder