



Milesight DS3604 LoRaWAN IoT E-Ink Display User Guide

[Home](#) » [Milesight](#) » Milesight DS3604 LoRaWAN IoT E-Ink Display User Guide 

Contents

- [1 Milesight DS3604 LoRaWAN IoT E-Ink Display](#)
- [2 DS3604 Product Information](#)
- [3 DS3604 Product Usage Instructions](#)
- [4 Packing List](#)
- [5 Hardware Introduction](#)
- [6 Power Button and Buzzer Patterns](#)
- [7 Installation](#)
- [8 FCC Statement](#)
- [9 Documents / Resources](#)
 - [9.1 References](#)
- [10 Related Posts](#)



Milesight DS3604 LoRaWAN IoT E-Ink Display



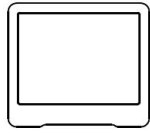
DS3604 Product Information

The DS3604 is a device designed for emergency use with an NFC area and an E-Ink screen. The device can be powered on/off with a power button or using NFC. It also has a buzzer that produces different patterns for different functions such as power on/off and resetting to factory default. The device can be configured using the Milesight ToolBox App on an NFC-supported smartphone. The device comes with a default password of 123456, which can be changed for security purposes. The device can be installed using screws or 3M tape, and it's important to note that if the installation location includes metal materials, the device should be placed 3 to 4 cm away from the surface to avoid signal problems.

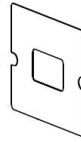
DS3604 Product Usage Instructions

1. Unpack the device and ensure that all components are present.
2. Decide on the installation method using screws or 3M tape.
3. If installing with screws, release the screw on the bottom of the device and remove the back cover. Mark the installing holes on the wall according to the holes on the back cover, and fix the back cover with two M3 screws. Install the device and fix the bottom of the device to the back cover with the fixing screw.
4. If installing with 3M tape, paste the tape to the back of the device, tear the other side and place it on a flat surface. Ensure that you note the screen direction when installing.
5. Power on/off the device by pressing and holding the power button for more than 3 seconds. Alternatively, use NFC to complete all steps.
6. To configure the device, download the Milesight ToolBox App on an NFC-supported smartphone, and attach the smartphone with NFC area to read/write the device until the App shows a successful prompt. Remember to configure a device password for security purposes (default password: 123456).
7. If you need to reset the device to factory default, press and hold the power button for more than 10 seconds. The buzzer will buzz quickly to indicate that the device has been reset.

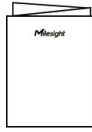
Packing List



1 × DS3604 Device



1 × 3M Double-Sided Tape

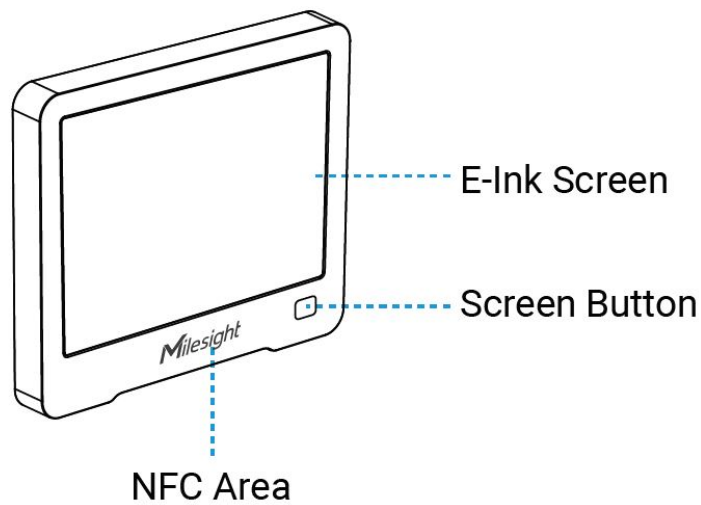


1 × Quick Start Guide



1 × Warranty Card

Hardware Introduction



Screen Button tap to receive downlink commands like screen content update, device reboot, etc.

Power Button and Buzzer Patterns

DS3604 equips with power button inside to switch on/off the device for emergency use. Usually users can use NFC to complete all steps.

Function	Action	Buzzer Status
Power On/Off	Press and hold the power button for more than 3 seconds.	Off→Buzz Slowly
Reset to Factory Default	Press and hold the power button for more than 10 seconds.	Buzz Quickly

Configuration Guide

1. Download “Milesight ToolBox” App on an NFC-supported smartphone.

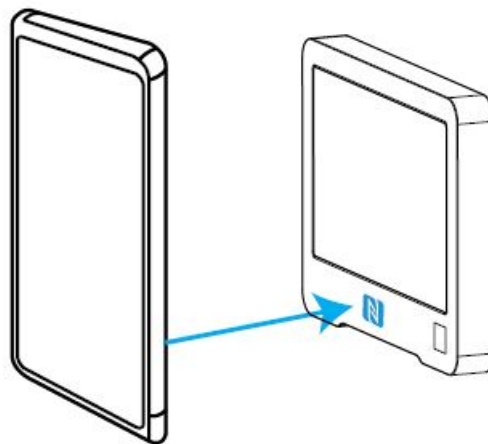


Android



iOS

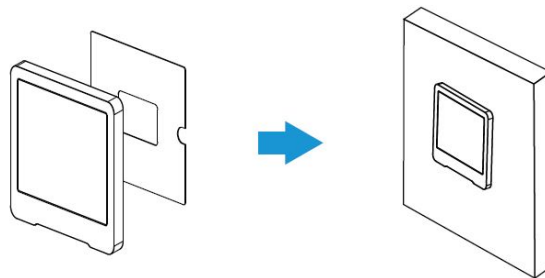
2. Open “Milesight ToolBox” App and attach the smartphone with NFC area to read/write the device until App shows a successful prompt. It’s suggested to configure a device password for security. (Default password: 123456)



Installation

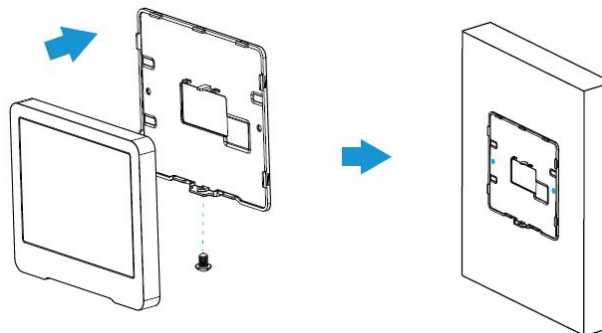
Fixed by 3M Tape

Paste 3M tape to the back of the device, then tear the other side and place it on a flat surface. Please note the screen direction when installing.

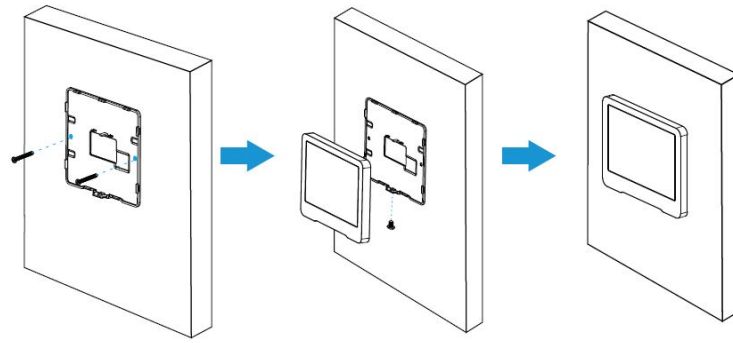


Fixed by Screws

1. Release the screw on the bottom of device and remove the back cover, mark the installing holes to the wall according to the holes on the back cover.

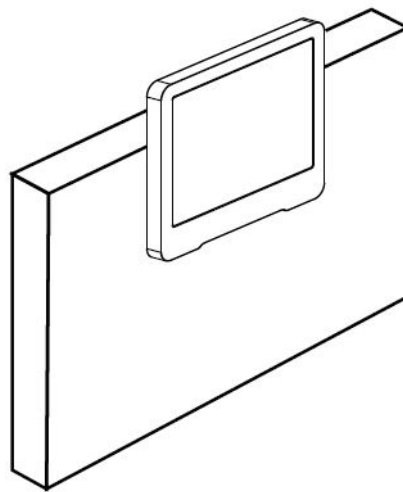


2. Fix the back cover with two M3 screws and install back the device, then fix the bottom of device to back cover with the fixing screw.



Installation Note

If the installation location is a metal surface or includes metal materials, please leave the upper part of device 3 to 4 cm away from the surface to avoid the signal problem.



FCC Statement

Any Changes or modifications not expressly approved by the party responsible for compliance could void the user's authority to operate the equipment.

This device complies with part 15 of the FCC Rules. Operation is subject to the following two conditions:

1. This device may not cause harmful interference, and
2. This device must accept any interference received, including interference that may cause undesired operation.

Note: This equipment has been tested and found to comply with the limits for a Class B digital device, pursuant to part 15 of the FCC Rules. These limits are designed to provide reasonable protection against harmful interference in a residential installation. This equipment generates, uses and can radiate radio frequency energy and, if not installed and used in accordance with the instructions, may cause harmful interference to radio communications. However, there is no guarantee that interference will not occur in a particular installation. If this equipment does cause harmful interference to radio or television reception, which can be determined by turning the equipment off and on, the user is encouraged to try to correct the interference by one or more of the following measures:

- Reorient or relocate the receiving antenna.
- Increase the separation between the equipment and receiver.
- Connect the equipment into an outlet on a circuit different from that to which the receiver is connected.
- Consult the dealer or an experienced radio/TV technician for help.

FCC Radiation Exposure Statement:

This equipment complies with FCC radiation exposure limits set forth for an uncontrolled environment. This equipment should be installed and operated with minimum distance 20cm between the radiator& your body. This transmitter must not be co-located or operating in conjunction with any other antenna or transmitter.



Cloud App




Quick Start Guide

All Software & files can be downloaded from <https://www.milesight-iot.com/documents-download/>

Milesight IoT Co., Ltd. www.milesight-iot.com

Building C09, Software Park Phase III, Xiamen 361024, Fujian, China

Documents / Resources

	Milesight DS3604 LoRaWAN IoT E-Ink Display [pdf] User Guide 2AYHY-DS3604, 2AYHYDS3604, ds3604, DS3604 LoRaWAN IoT E-Ink Display, LoRaWAN IoT E-Ink Display, IoT E-Ink Display, E-Ink Display, Display
---	--

References

-  [Milesight IoT - LoRaWAN, 5G & AIoT](#)
-  [Download Center | Milesight - AIoT Solution Provider](#)