



## Contents [ [hide](#) ]

- [1 Milesight B6601 AI Pro Bullet Plus Network Camera](#)
- [2 Product Usage Instructions](#)
- [3 Quick Installation Steps](#)
- [4 Hardware Overview](#)
- [5 How to Connect to Alarm Interface](#)
- [6 How to Connect the Waterproof Connector](#)
- [7 Assigning an IP Address by Using Smart Tools](#)
- [8 Assigning an IP Address via Browser](#)
- [9 Accessing from the Web Browser](#)
- [10 FAQ](#)
- [11 Documents / Resources](#)
  - [11.1 References](#)



## Milesight B6601 AI Pro Bullet Plus Network Camera

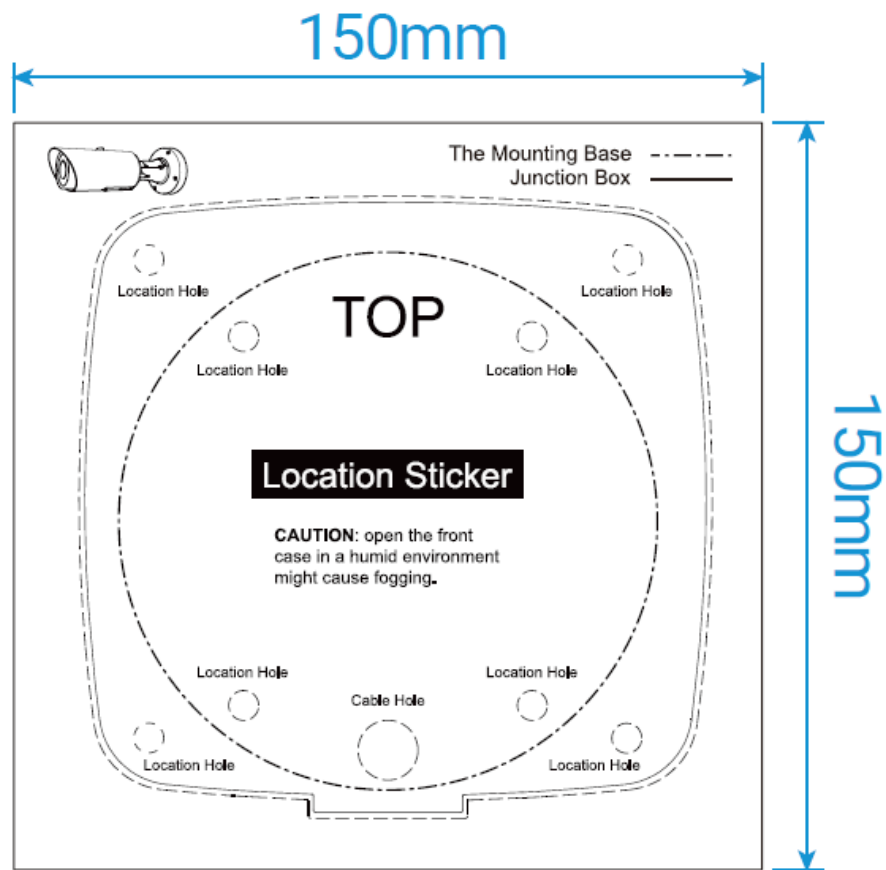


## Product Usage Instructions

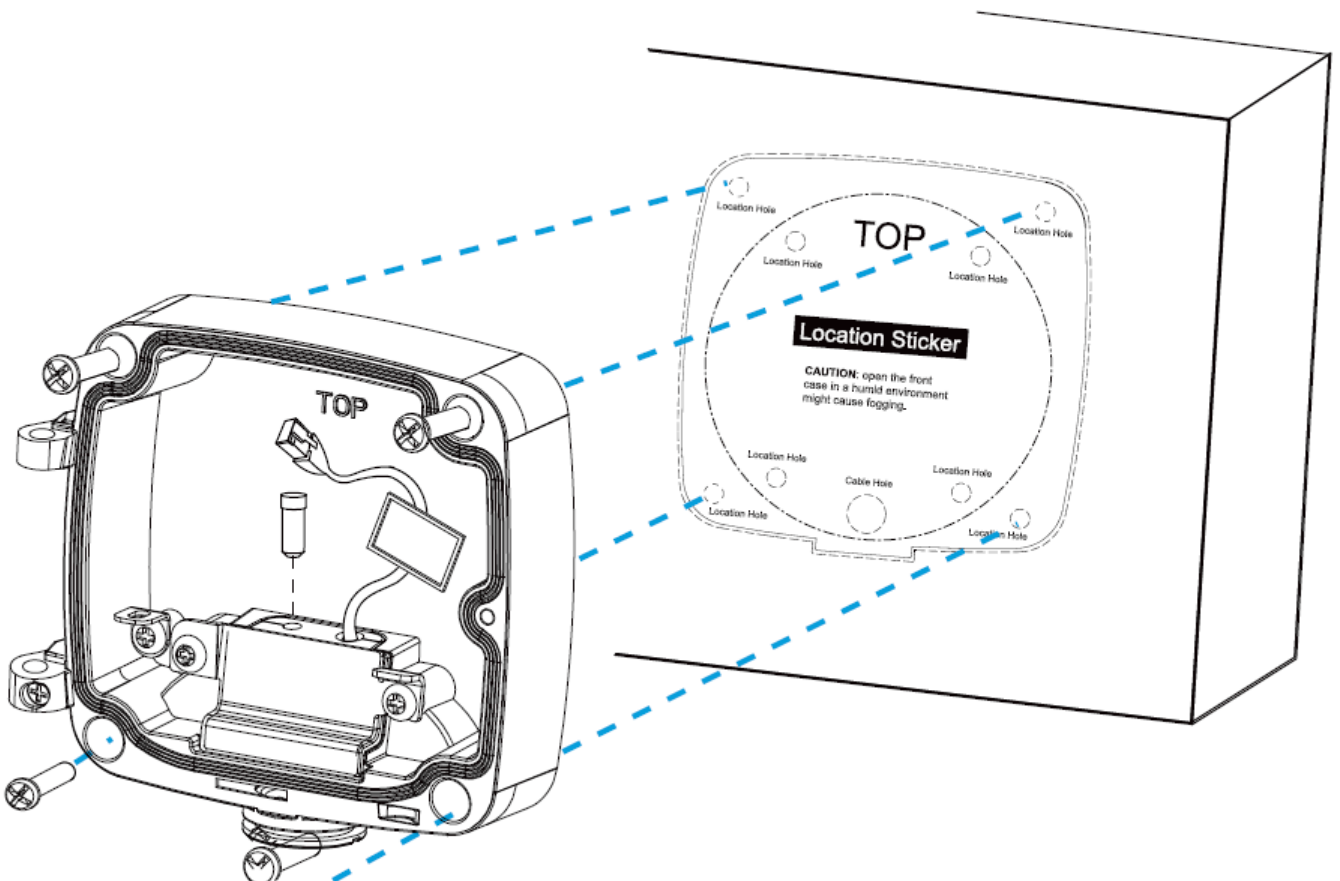
- Fix a sticker on the intended camera installation position.
- Remove the tension disc on the rear cover of the Junction Box and secure it to the ceiling or wall.
- Adjust the cable length and connect them to the corresponding interfaces.
- Adjust the shooting direction by adjusting screws and tighten the setscrew.
- Secure the bracket with mounting screws and adjust the camera angle.
- Digital output and input pins are available for alarm connections. Refer to the General I/O Terminal Block for pin details.
- Ensure proper connection of LAN cables with the provided rubber ring for waterproofing.

## Quick Installation Steps

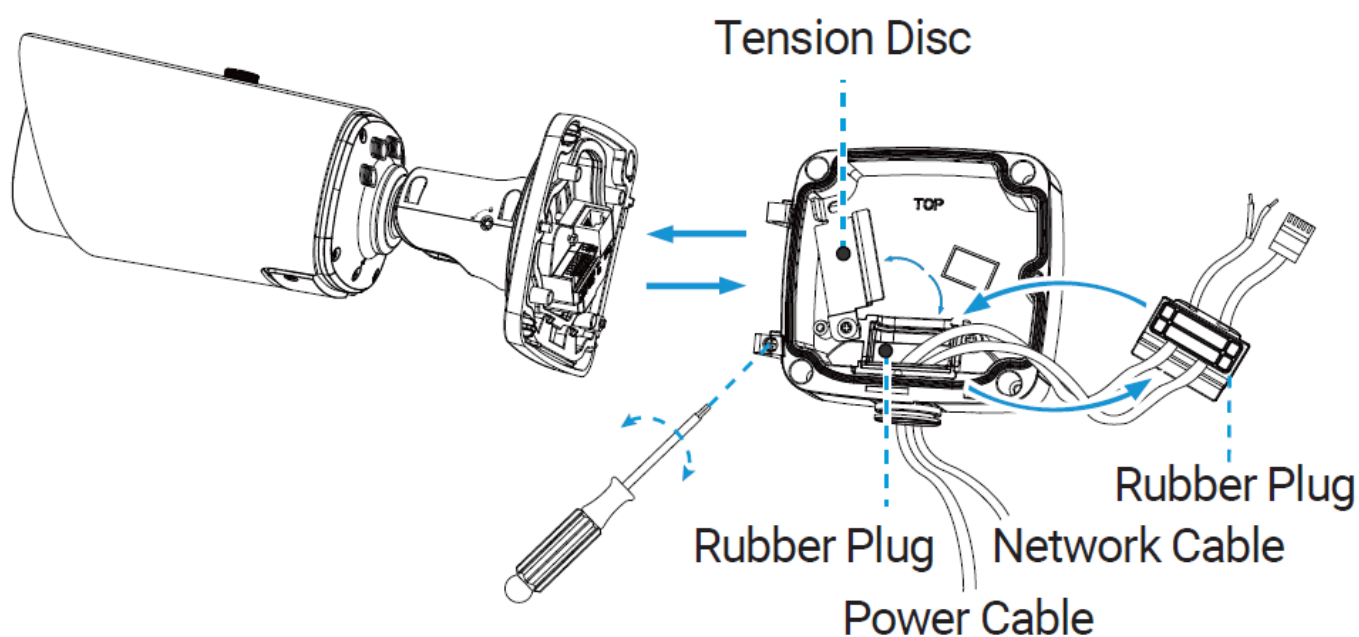
- **Step1:** Fix a sticker on the position where the camera is intended to be installed.



- **Step2:** Remove the tension disc on the rear cover of the Junction Box (A62), and cut an opening in the rubber plug and get cables through the opening, then fasten the rear cover to the ceiling or wall.

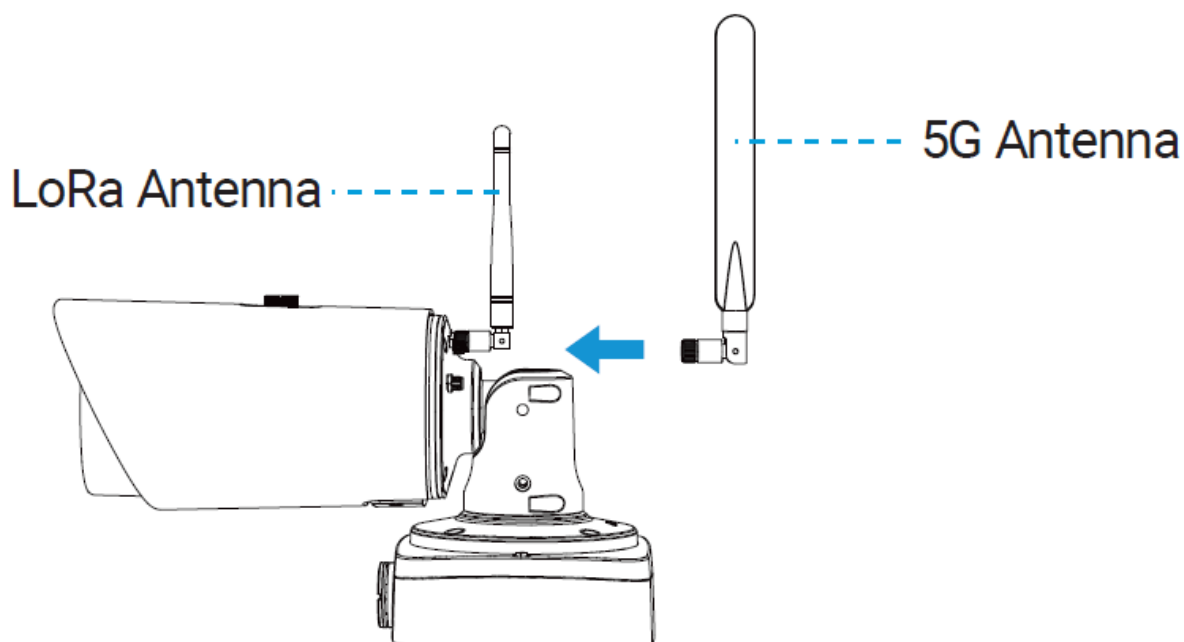


- **Step3:** Install the front cover from an angle of nearly 90° to the rear cover, or hang the camera from the bracket.

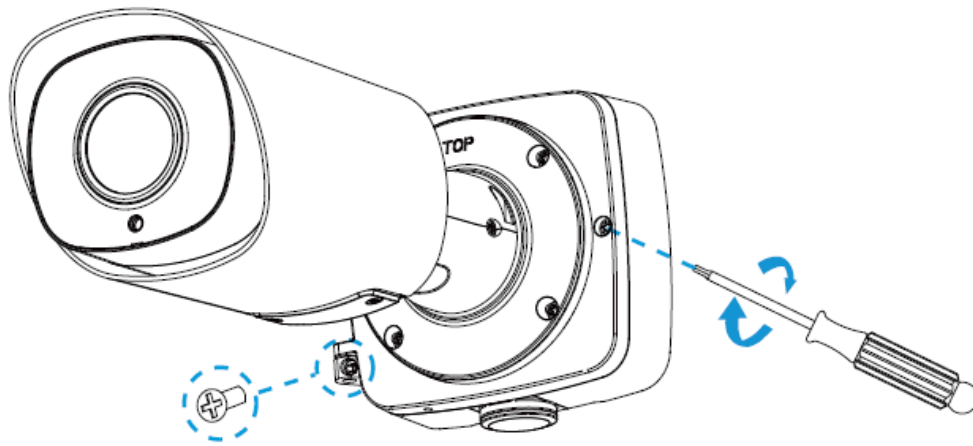


#### Note

- For a 5G camera, you need to install the four 5G antennas before installing the front cover to the rear cover or attaching the camera to the bracket.

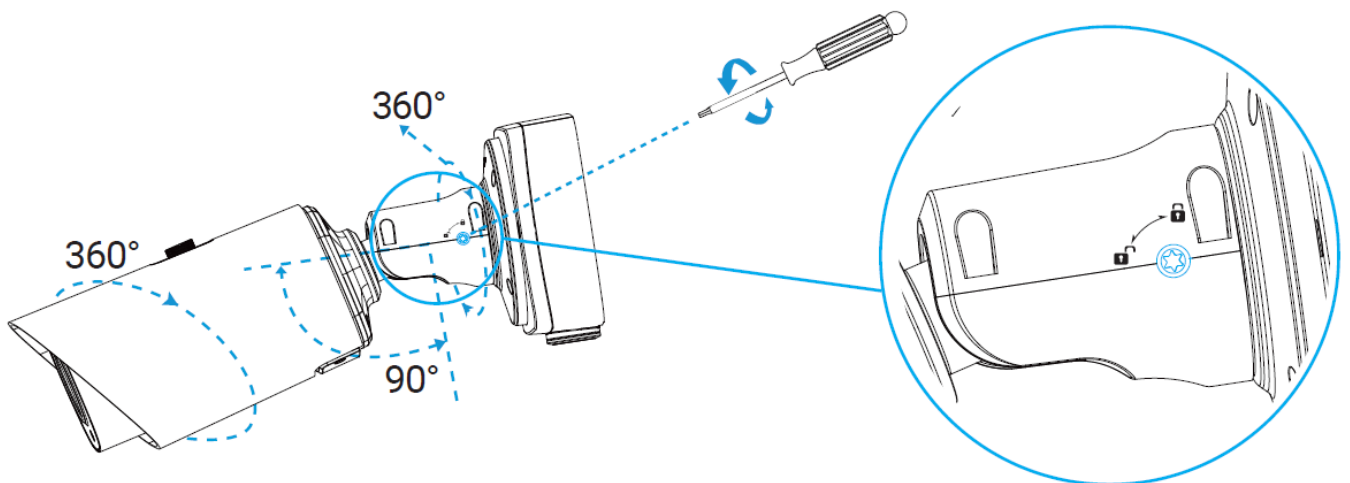


- **Step4:** Adjust the cable length, and connect the cables to the corresponding interfaces and fix the tension disc. Close the junction box and fix screws at last. Please remember to plug the small rubber plug whenever the holes on the rubber plug are not in use.

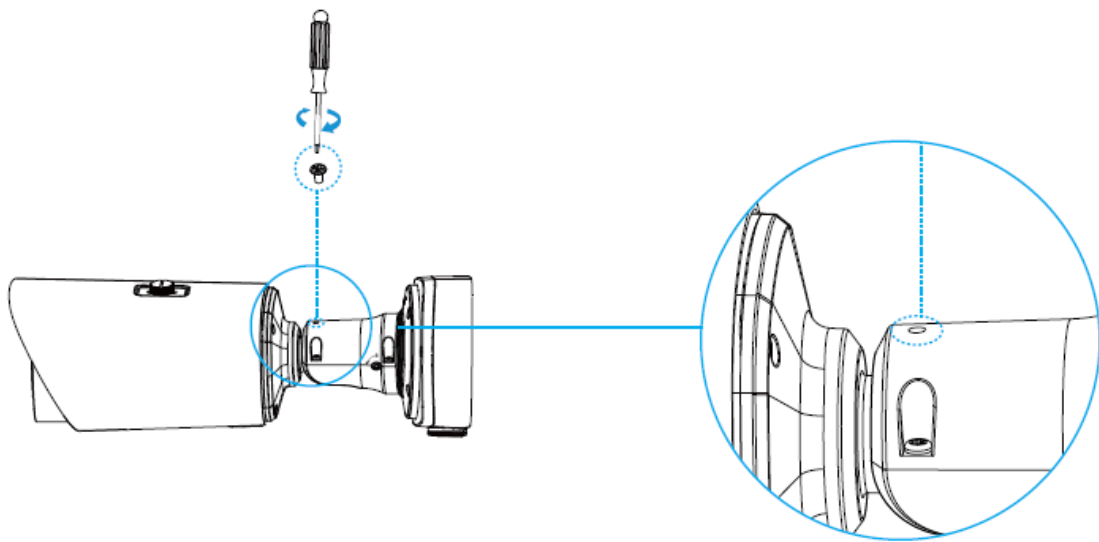


**Remember to fix the setscrew tightly**

- **Step5:** Adjust the shooting direction by adjusting the screws as shown in the diagram. Once the camera direction is adjusted, tighten the setscrew to secure the camera orientation.

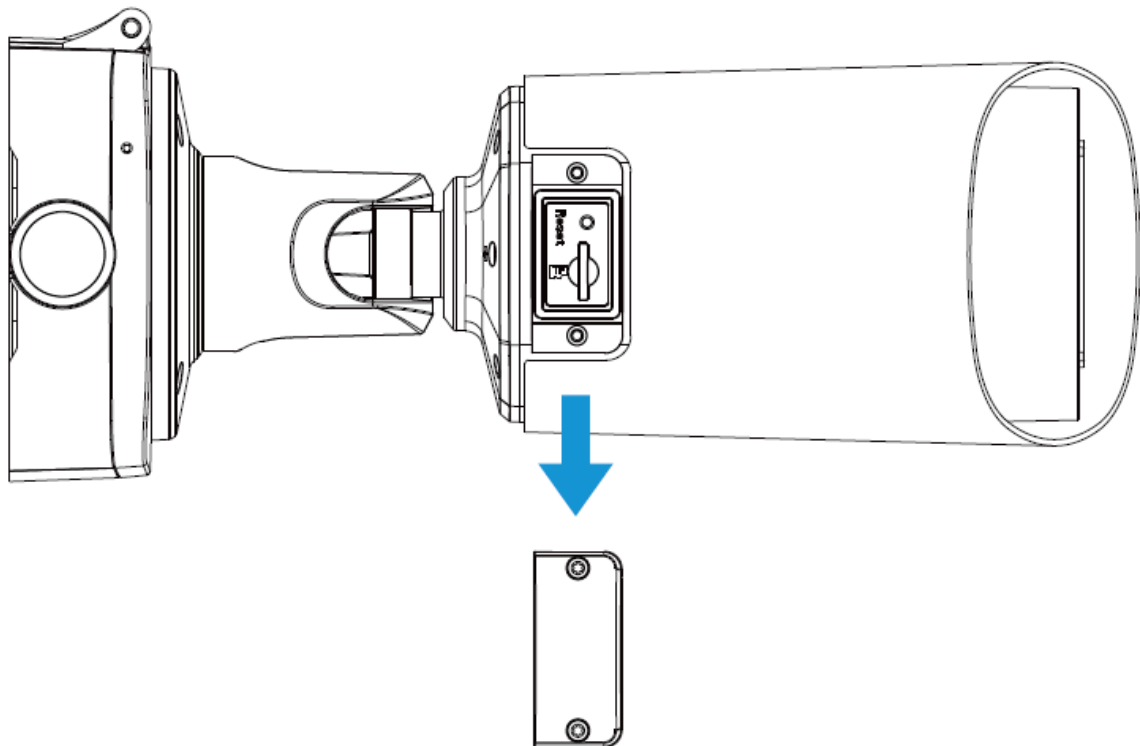


- **Step6:** Take out the mounting screws from the accessory pack and use them to secure the bracket. Adjust the camera angle as desired before finally tightening the bracket.

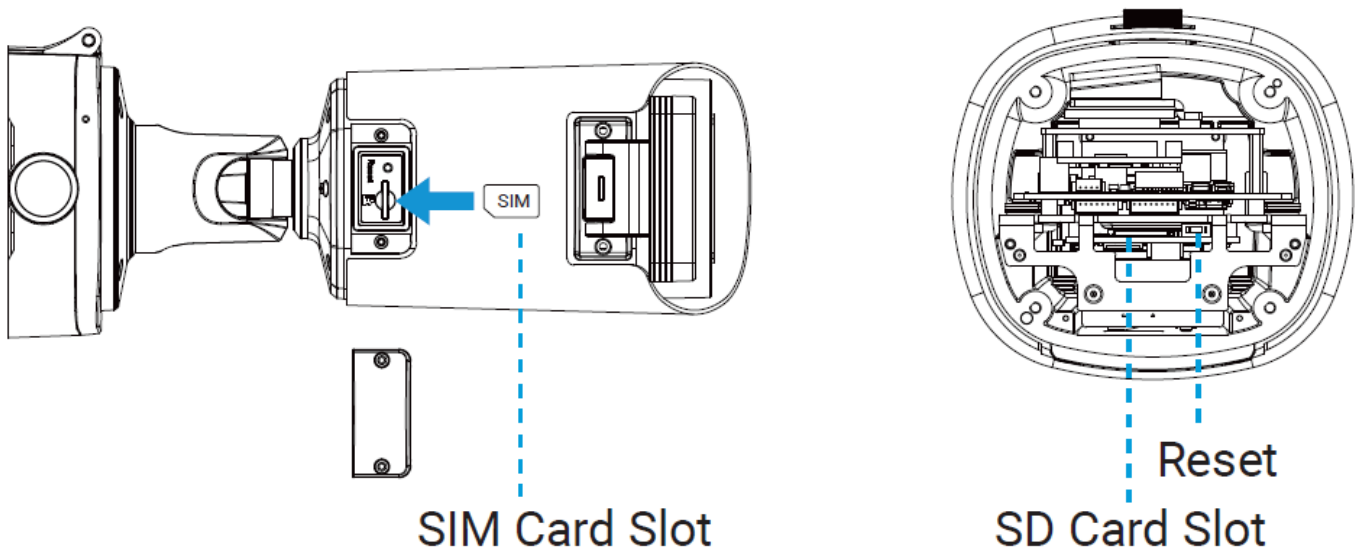


## Note

1. Loosen the screws to get access to the SD card slot if you need. Fix the screws again after inserting the SD card.

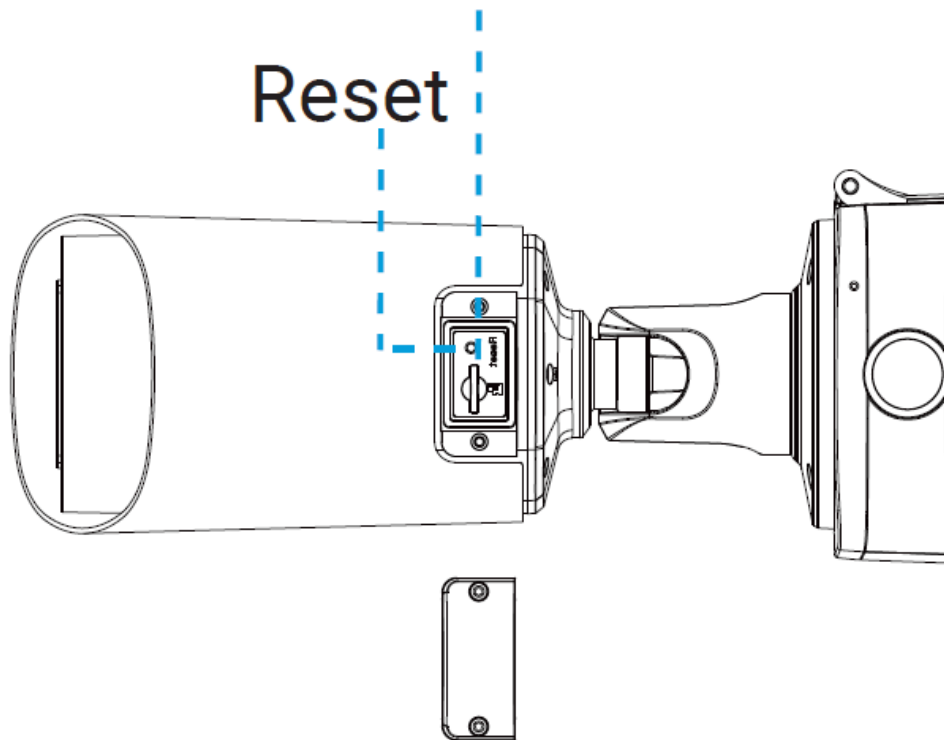


2. For a 5G camera, the card slot is used to insert the SIM card. And the SD card slot is located inside the camera body. The replacement of the SD card requires disassembling the camera.

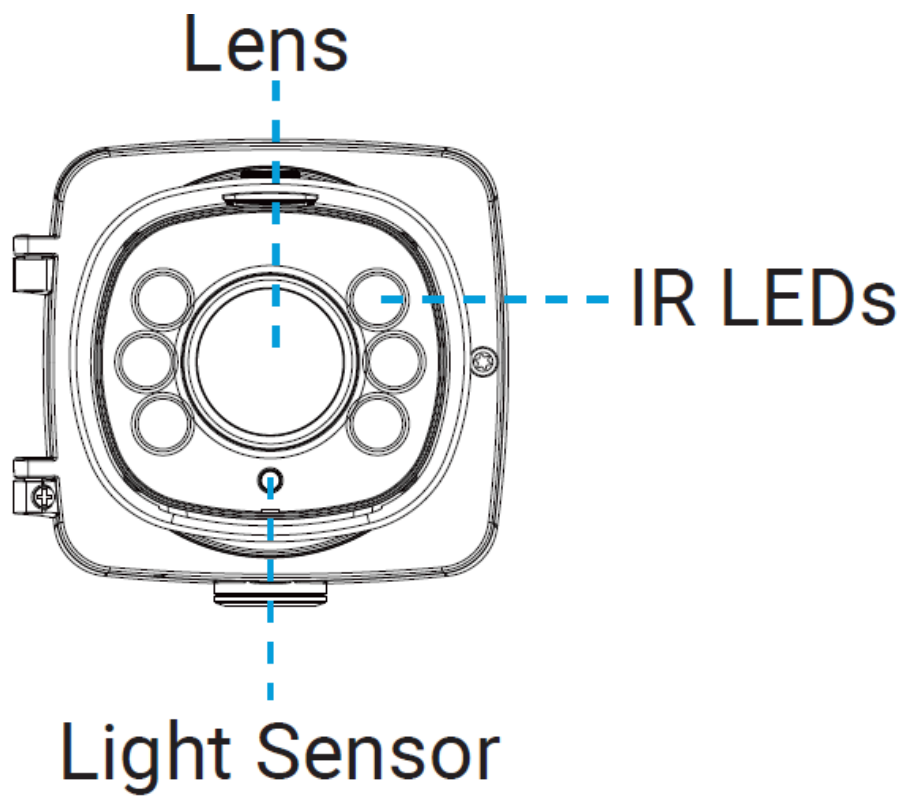


## Hardware Overview

microSD/SDHC/SDXC Card Slot  
(Nano SIM Card Slot For 5G Camera)

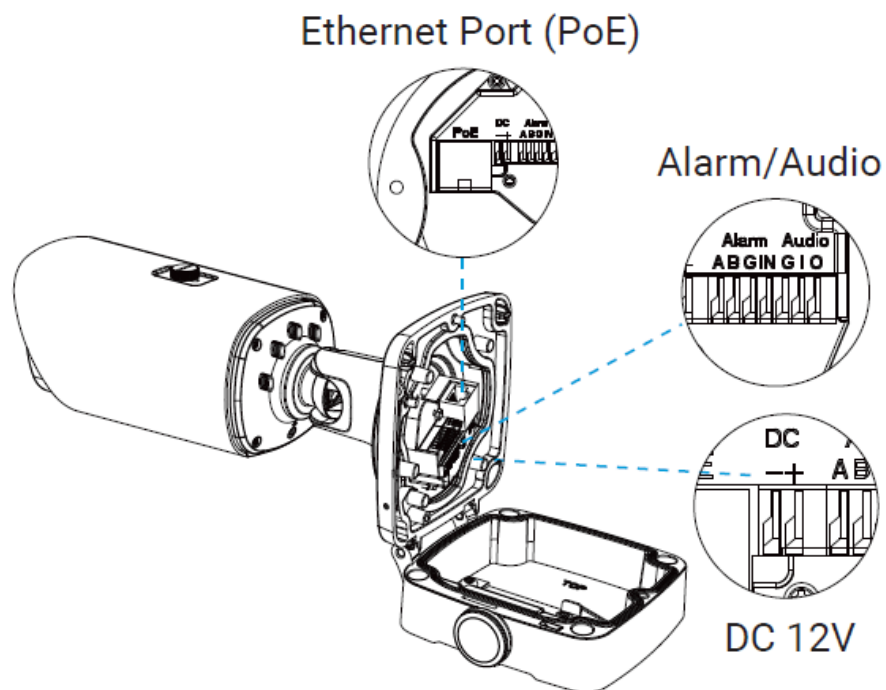
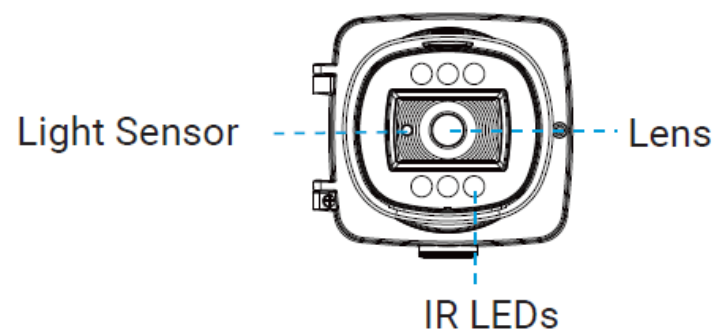


## Auto Focus Camera

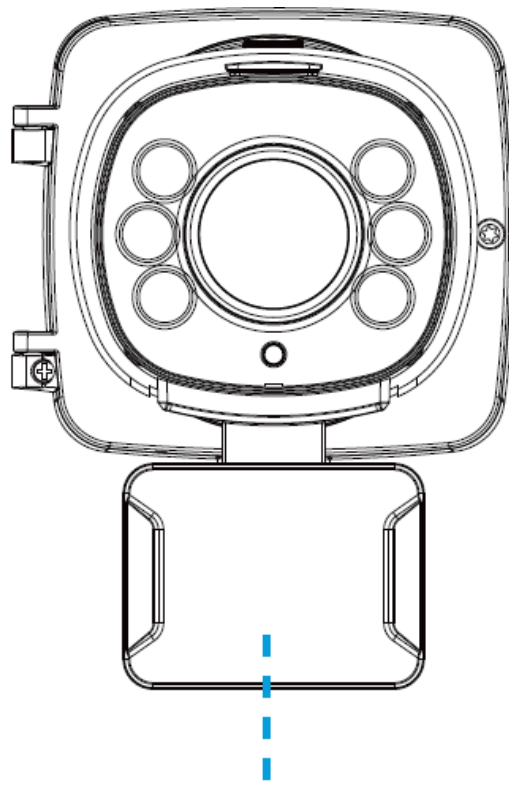


**Motorized Camera**



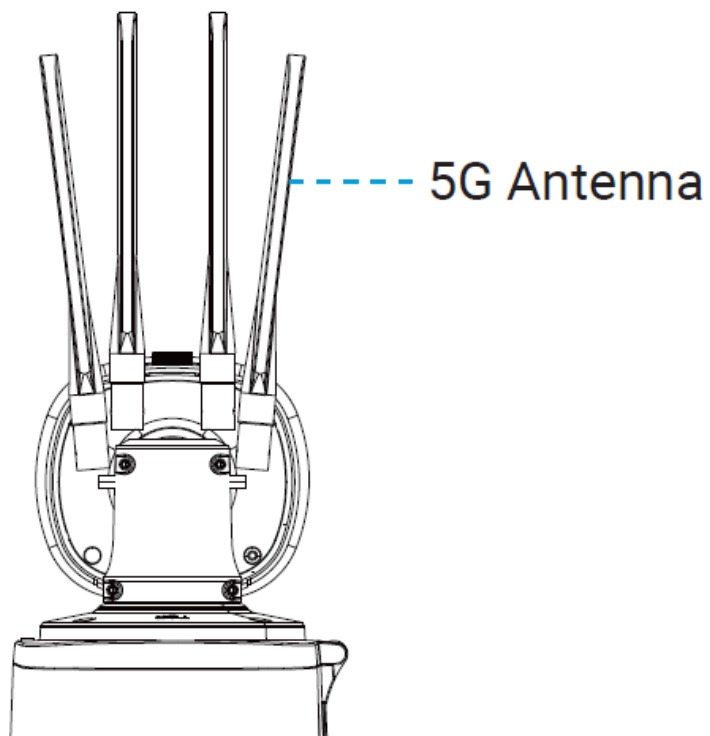


**Radar AI LPR Pro Bullet Plus Camera**

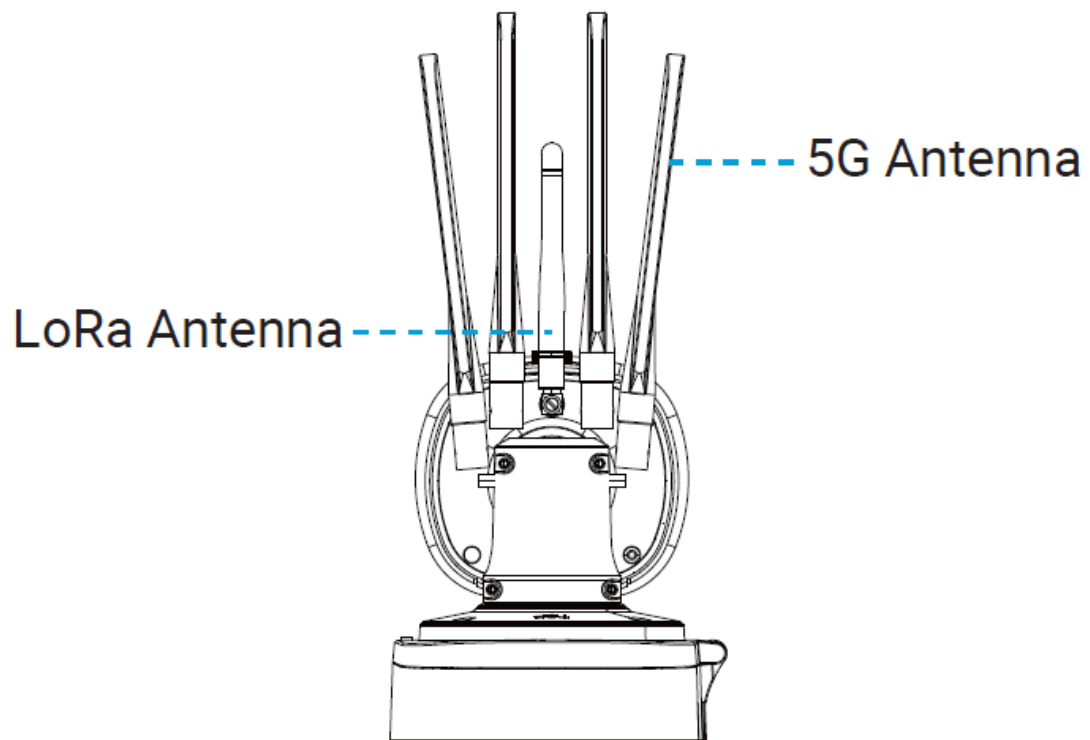


Radar

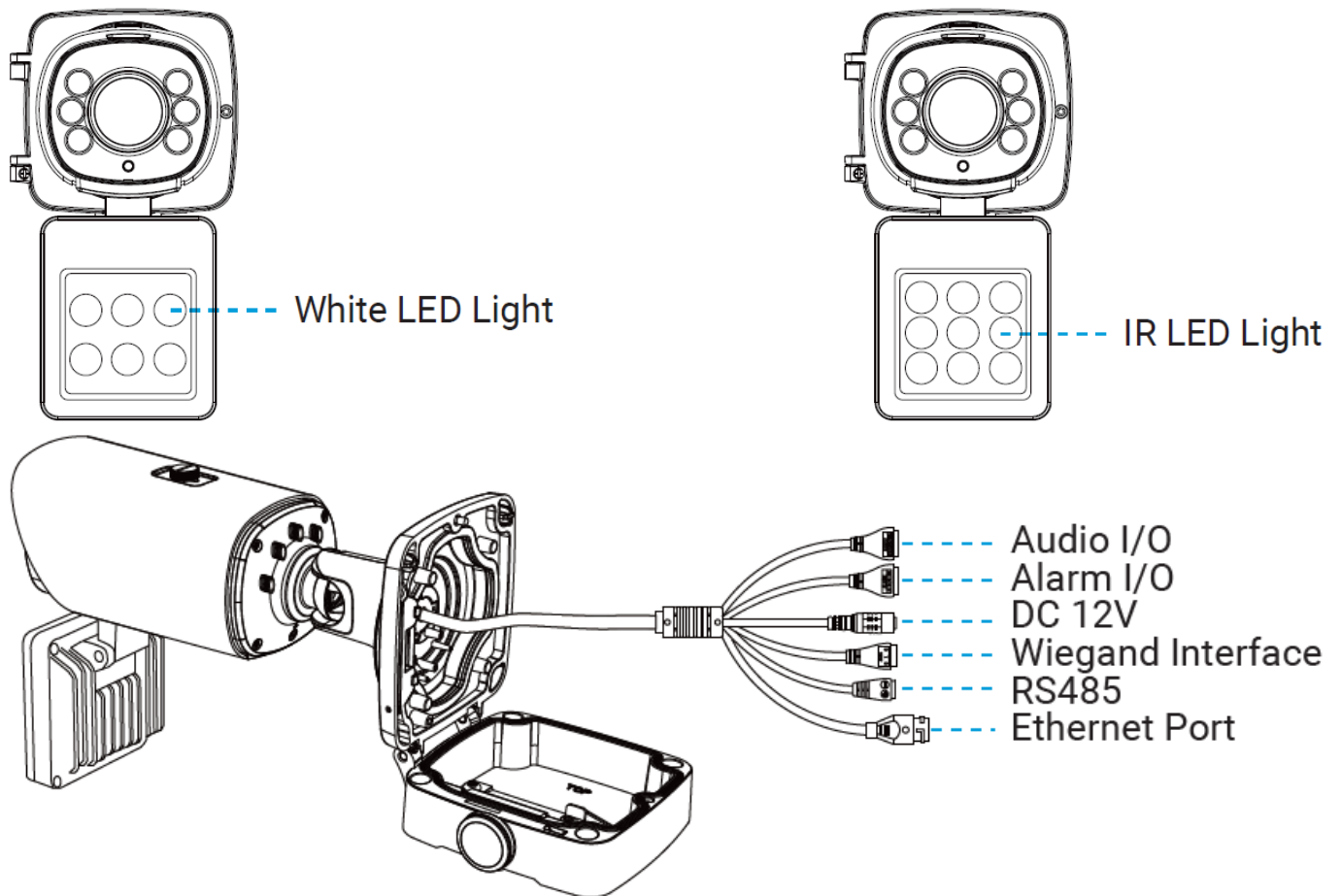
**5A AI Pro Bullet Plus Camera**



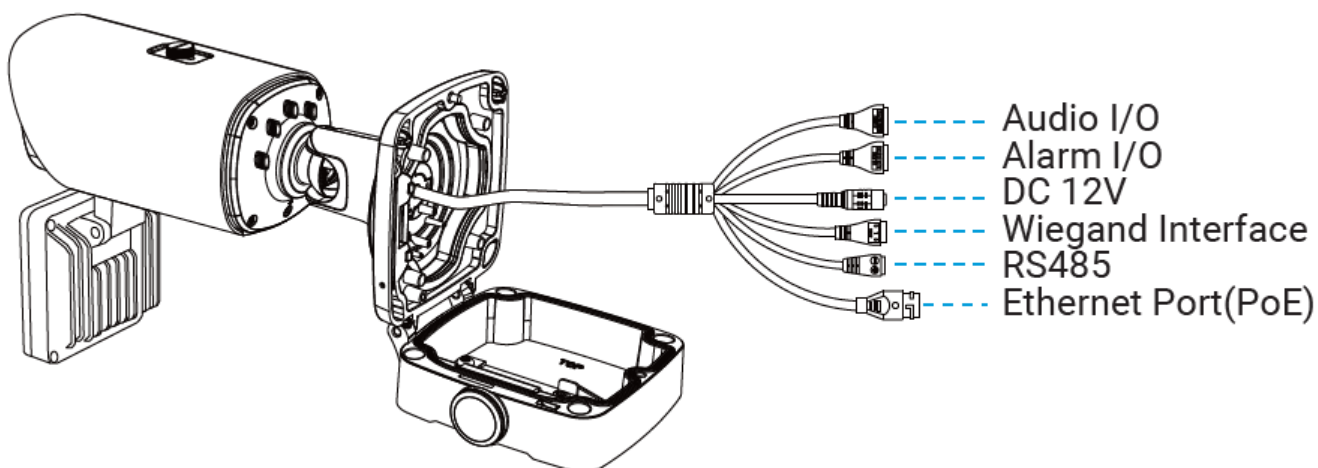
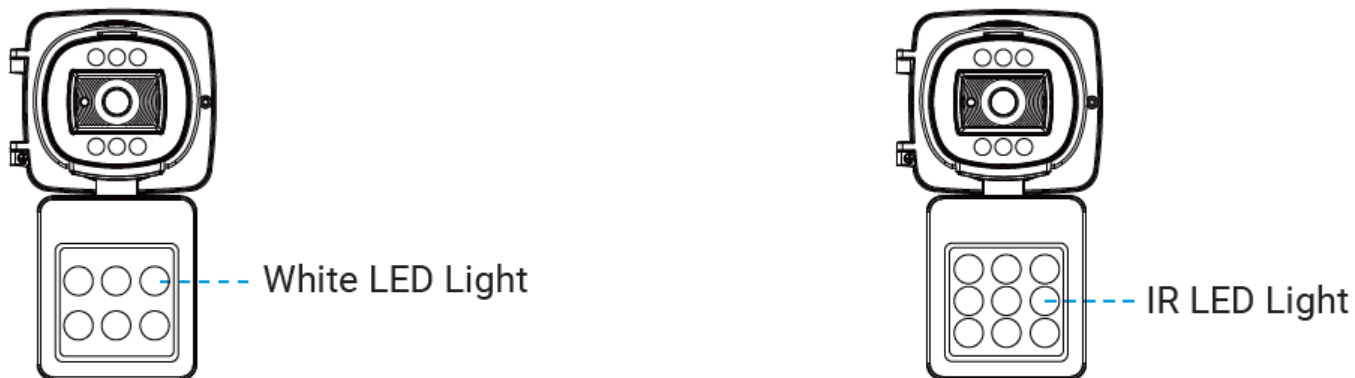
**5G AIoT Pro Bullet Plus Camera**



### Supplement Light AI LPR 4X Pro Bullet Plus Camera



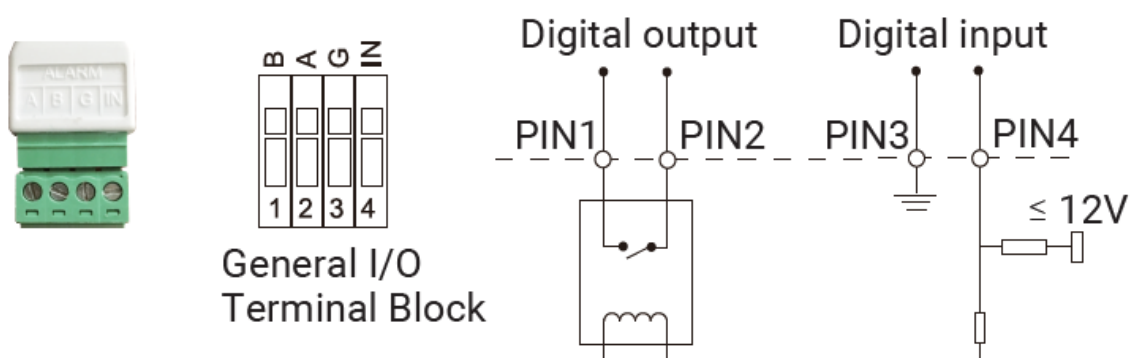
### Supplement Light AI LPR Motorized Pro Bullet Plus Camera



## Note

1. Reset Button: Press the "Reset" button for 5 seconds, then the device will be restored to factory default.
2. DC and PoE are available for the AI Pro Bullet Plus Camera's power supply.  
(PoE is not available for Supplement Light AI LPR 4X Pro Bullet Plus Camera.)

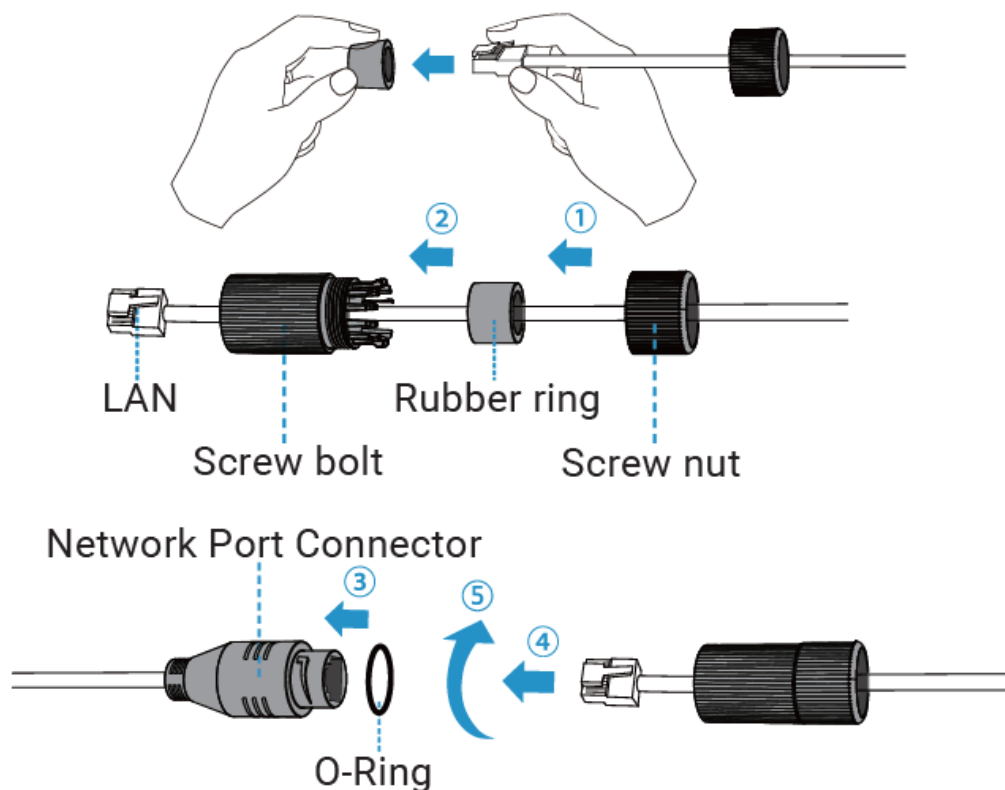
## How to Connect to Alarm Interface



- **PIN1:** Alarm Output NC/NO 24V DC 1A
- **PIN2:** Alarm Output NC/NO 24V DC 1A

- **PIN3:** Alarm Input NC/NO  $\leq 12V$
- **PIN4:** Alarm Input NC/NO  $\leq 12V$

## How to Connect the Waterproof Connector



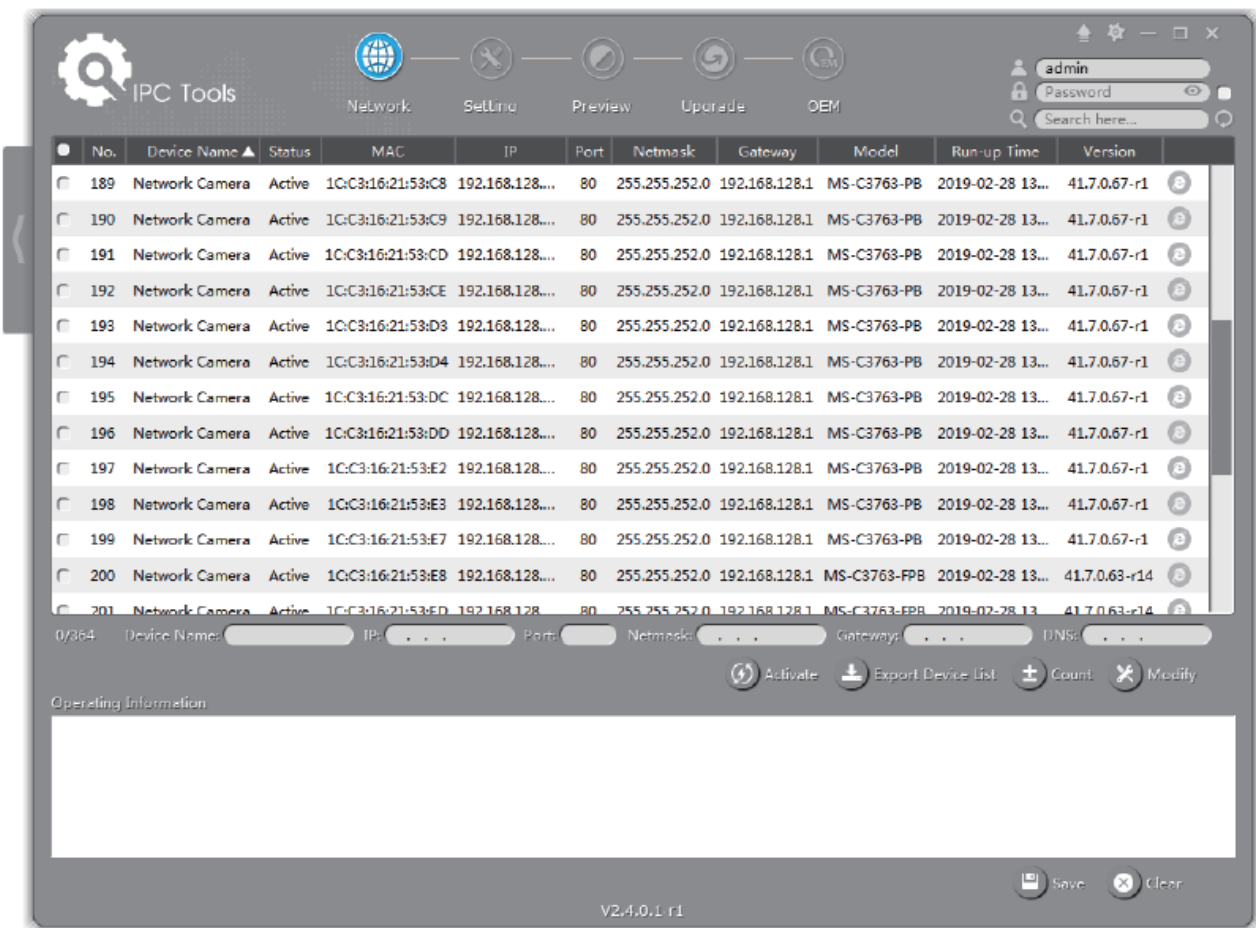
- **Step1:** Get the network cable through the screw nut, rubber ring and the screw bolt;
- **Step2:** Insert the rubber ring into the screw bolt;
- **Step3:** Connect the screw nut to the screw bolt;
- **Step4:** Place the O-Ring on the network port connector.
- **Step5:** Connect the RJ45 to the network port connector, tighten the screw bolt and the connector.

### Note

Please tightly wrap all cable-out interfaces with adhesive tape at last to prevent them from water.

## Assigning an IP Address by Using Smart Tools

- Smart Tools is a software tool that can automatically detect multiple online Milesight network cameras in the LAN, set IP addresses, and manage firmware upgrades.
- It's recommended to use it when assigning IP addresses for multiple cameras.



The steps to change the IP of cameras are as below:

1. Start Smart Tools, click the IPC Tools page, then enter the device information, such as IP address, MAC address, Port number, Netmask, and Gateway, then all related Milesight network cameras in the same network will be shown.
2. Select a camera or multiple cameras according to the MAC addresses.
3. Click “Activate” to set the password when using the cameras for the first time (Password must be 8 to 32 characters long, contain at least one number, and one letter), and set three security questions (If you forget the password, you can reset the password by answering three security questions correctly).
4. Type the user name and password you set, change the IP address or other network values, and then click the “Modify” button.
5. By double-clicking the selected camera or the browser of the interested camera, you can access the camera via a web browser directly.

More usage of Smart Tools, please refer to the “Smart Tools User Manual”.

## Assigning an IP Address via Browser

- If the network segment of the computer and that of the camera are different, please add some 192.168.5.xx(255.255.255.0) for your PC to get access to your cameras. More details can be found in “Milesight Network Camera Quick Start”.

## Accessing from the Web Browser

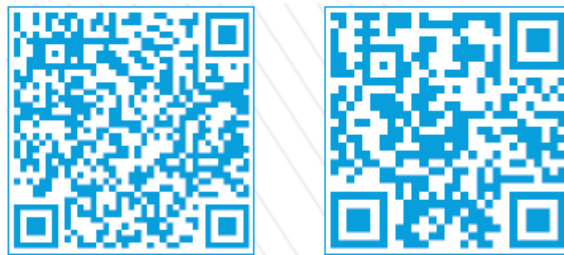
The camera can be used with the most standard operating systems and browsers. The recommended browsers are Internet Explorer, Firefox, Chrome, and Safari. More information about the plugin installation, please refer to the troubleshooting.

- 5. Milesight-Troubleshooting-Plugin Installation on Windows-IPC
- 6. Milesight-Troubleshooting-Plugin Installation on MAC

Thank you for choosing the Milesight Product: [www.milesight.com](http://www.milesight.com)

All Software & files can be downloaded from


<https://www.milesight.com/resources/download-center>



## FAQ

- **Q: How do I reset the device to factory defaults?**
  - **A:** Press the Reset button for 5 seconds, and the device will be restored to factory default settings.
- **Q: Can I use PoE for power supply on all camera models?**
  - **A:** PoE is available for the AI Pro Bullet Plus Camera's power supply. However, it is not available for the Supplement Light AI LPR 4X Pro Bullet Plus Camera.

## Documents / Resources

	<a href="#">Milesight B6601 AI Pro Bullet Plus Network Camera [pdf]</a> User Guide B6601 AI Pro Bullet Plus Network Camera, B6601, AI Pro Bullet Plus Network Camera, Bullet Plus Network Camera, Plus Network Camera, Network Camera, Camera
---	--

## References

- [User Manual](#)

📁 Milesight

🔑 AI Pro Bullet Plus Network Camera, B6601, B6601 AI Pro Bullet Plus Network Camera, Bullet Plus Network Camera, camera, Milesight, Network Camera, Plus Network Camera

---

## Leave a comment

Your email address will not be published. Required fields are marked \*

Comment \*

Name

Email

Website

☐ Save my name, email, and website in this browser for the next time I comment.



**Post Comment**

## Search:

e.g. whirlpool wrf535swhz

**Search**

[Manuals+](#) | [Upload](#) | [Deep Search](#) | [Privacy Policy](#) | [@manuals.plus](#) | [YouTube](#)

This website is an independent publication and is neither affiliated with nor endorsed by any of the trademark owners. The "Bluetooth®" word mark and logos are registered trademarks owned by Bluetooth SIG, Inc. The "Wi-Fi®" word mark and logos are registered trademarks owned by the Wi-Fi Alliance. Any use of these marks on this website does not imply any affiliation with or endorsement.