



Contents [[hide](#)]

- [1 Milesight AI TrueColor Turret Network Camera](#)
- [2 Product Usage Instructions](#)
- [3 Package Contents](#)
- [4 Hardware Overview](#)
- [5 Dimensions](#)
- [6 Installation](#)
- [7 How to Connect to Alarm Interface](#)
- [8 How to Connect the Water-proof Connector](#)
- [9 FCC Statement](#)
- [10 FAQs](#)
- [11 Documents / Resources](#)
 - [11.1 References](#)



Milesight AI TrueColor Turret Network Camera



Specifications

- **Model:** Milesight AI TrueColor Turret Network Camera
- **Dimensions:** 108mm x 84mm x 122mm
- **Power Input:** DC 12V
- **Network Port:** Ethernet Port (PoE)
- **Lights:** Smart Hybrid Lights (Mixed IR and White Warm Lights)

Product Usage Instructions

Installation

Step 1: Fix the perforation-assisted sticker at the camera's intended installation position and punch holes as indicated on the sticker.

Step 2: Fix the mounting bracket using the provided screws at the installation position. Various mounts like Wall Mount, Junction Box, and Pendant Mount are available for installation.

Step 3: Pass the tail cable of the device port into the mounting bracket. If there is no hole in the wall, ensure to pull the tail cable out from the side before tightening the screws.

Step 4: Rotate the camera unit to detach it from the mounting bracket.

Step 5: Attach the camera to the mounting bracket and tighten the horizontal limit screw.

Step 6: Adjust the camera position by loosening the vertical limit screw and rotating the camera to match the scene.

How to Connect to Alarm Interface

Follow the provided PIN configuration to connect to the alarm interface for digital input and output. Ensure correct voltage and current requirements are met.

How to Connect the Water-proof Connector

Step 1: Pass the network cable through the screw nut, rubber ring, and screw bolt.

Step 2: Insert the rubber ring into the screw bolt.

Step 3: Connect the screw nut to the screw bolt.

Step 4: Place the O-Ring on the network port connector.

Step 5: Connect the RJ45 to the network port connector, tighten the screw bolt and connector. Ensure all cable-out interfaces are tightly wrapped with adhesive tape to prevent water damage.

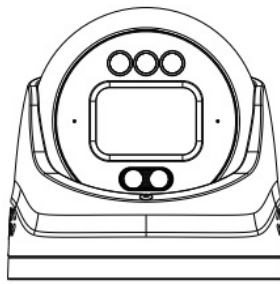


User Manual

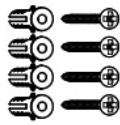


Smart Tools

Package Contents



AI TrueColor Turret
Network Camera x 1



Expansion Screw
Packet x 1



Screwdriver x 1



Water-proof
Connector x 1



Quick Start Guide x 1

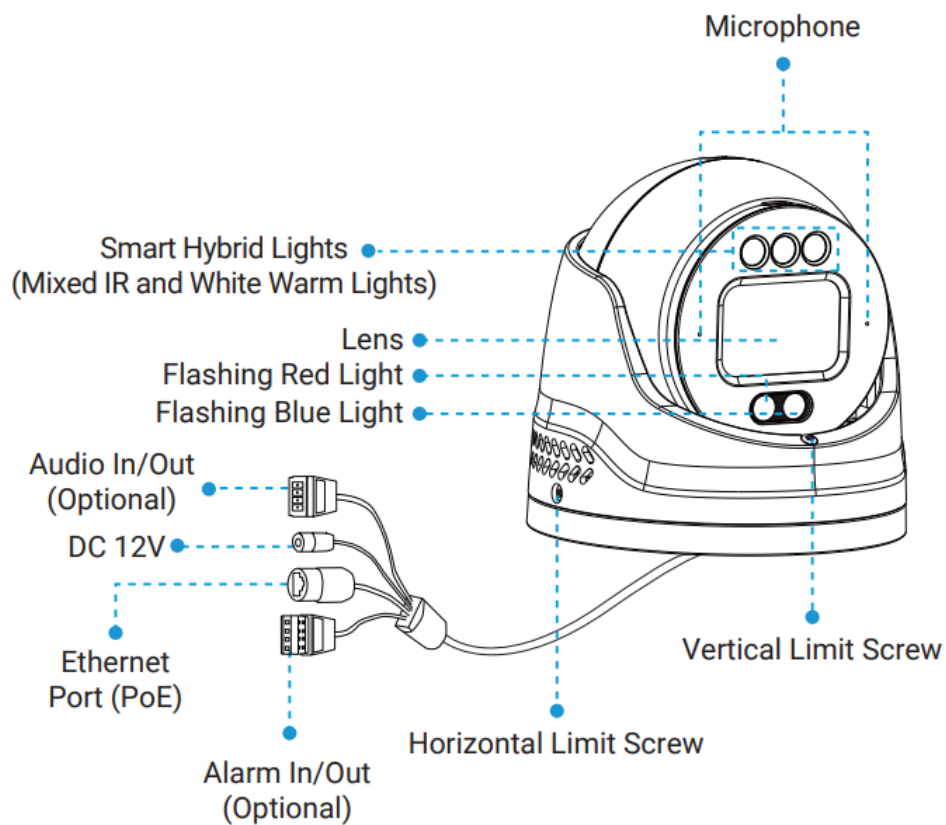


Warranty Card x 1



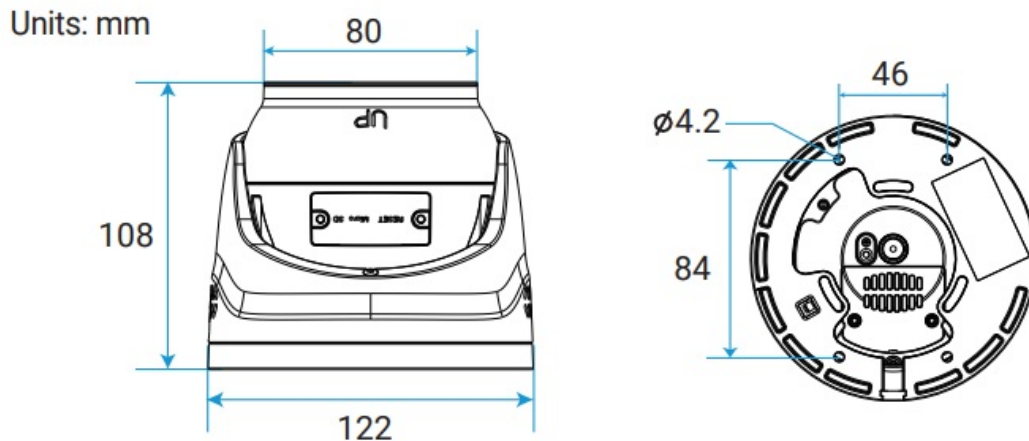
Perforation-assisted
Sticker x 1

Hardware Overview



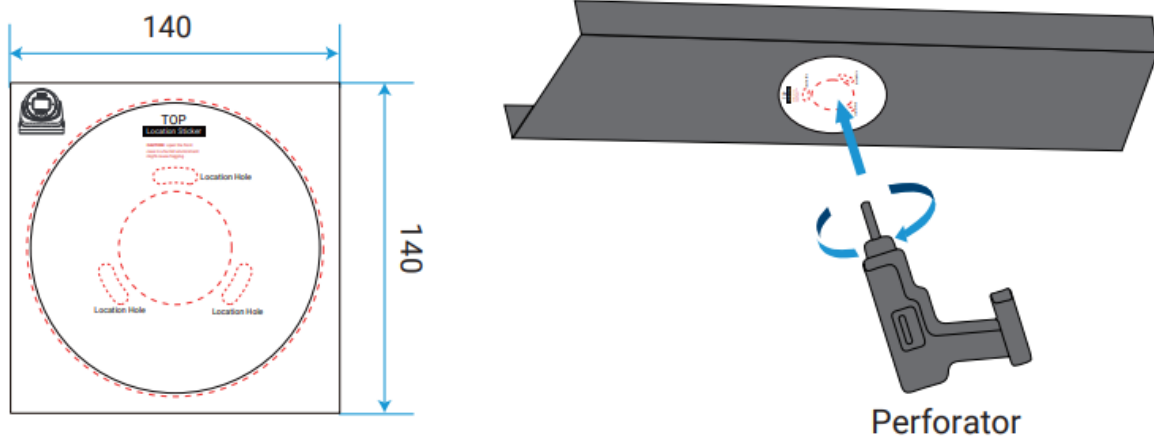
Dimensions

AI TrueColor Turret Network Camera



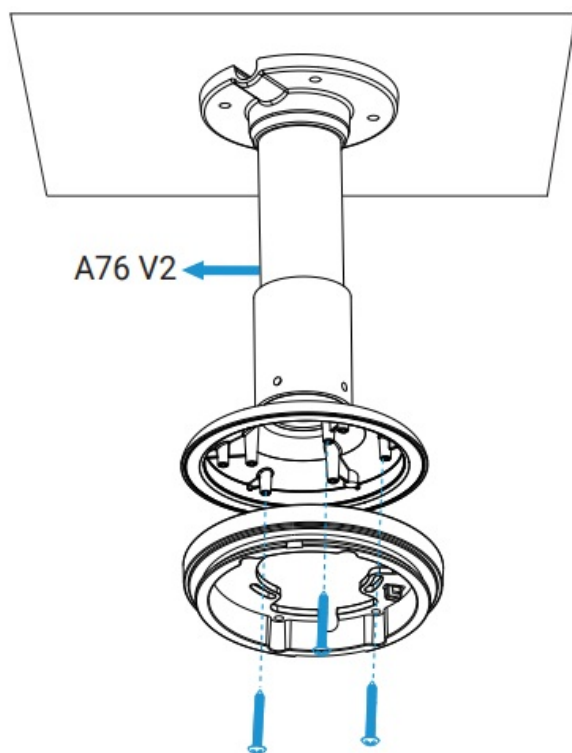
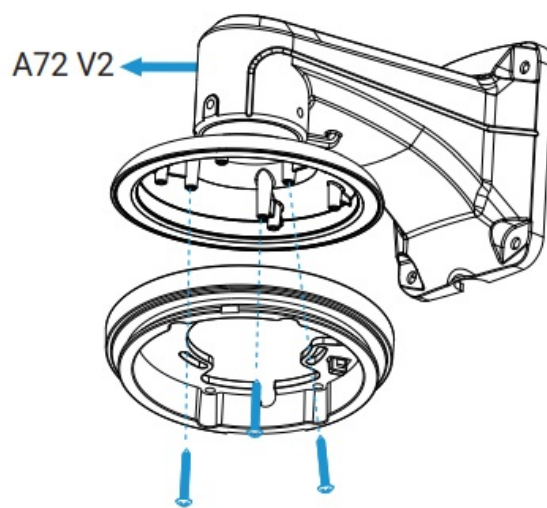
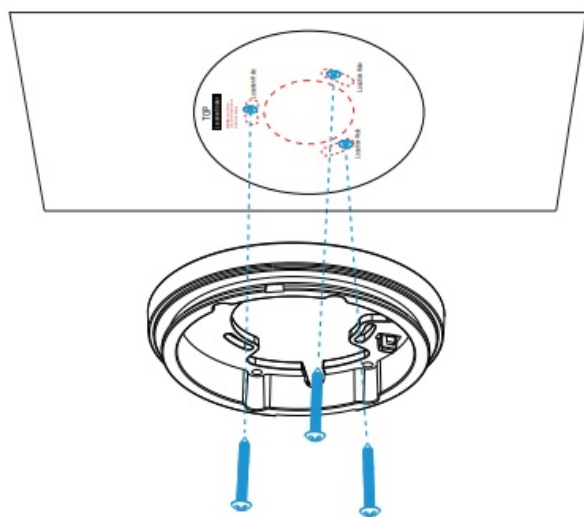
Installation

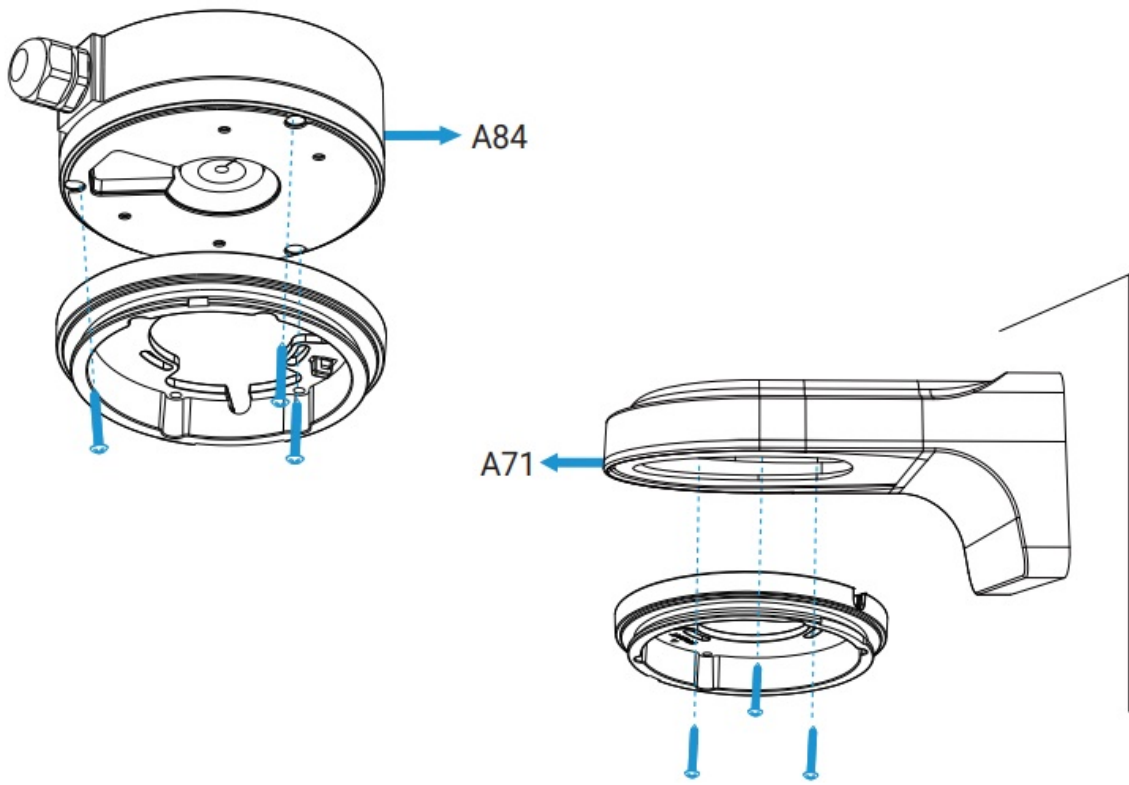
Step1: First, fix the perforation-assisted sticker at the camera's intended installation position, then punch holes as indicated on the sticker.



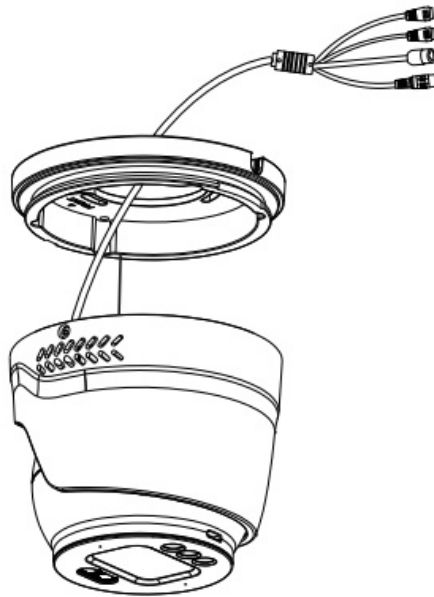
Step2: Fix the mounting bracket on the position by using the screw where the camera is intended to be installed.

Wall Mount (A72 V2 & A71), Junction Box (A84) and Pendant Mount (A76 V2) are available for installation.

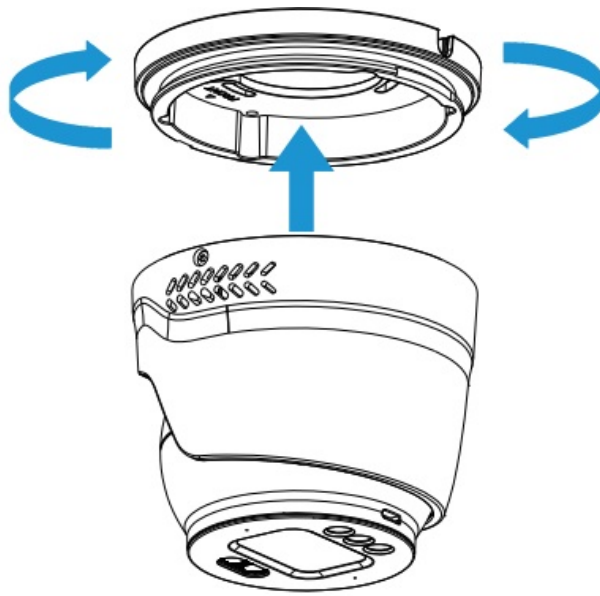




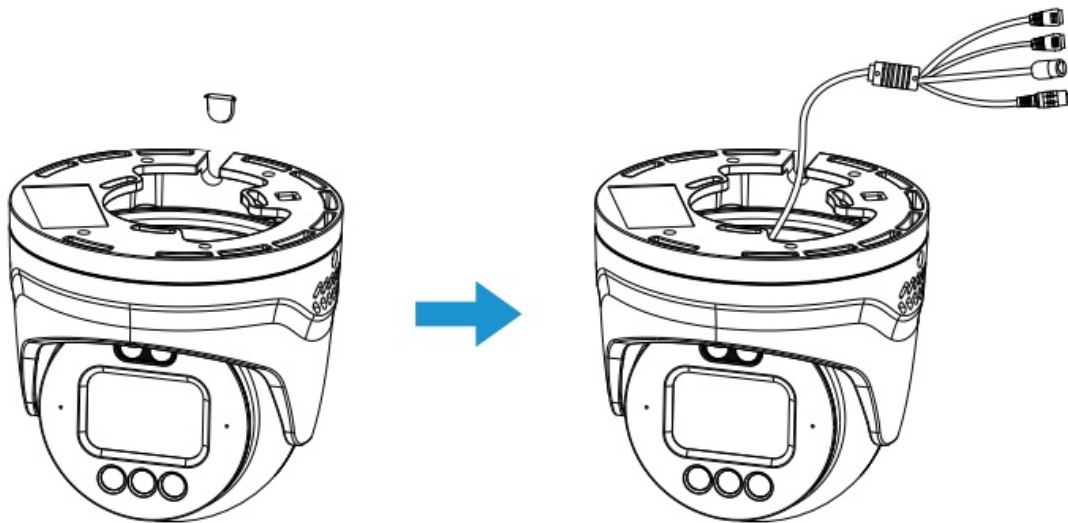
Step3: Pass the tail cable of the device port into the mounting bracket.



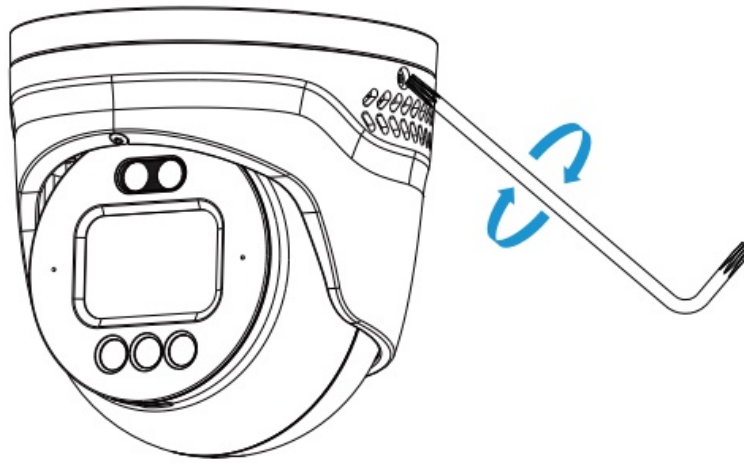
Step4: Rotate the camera unit to take off the camera mounting bracket.



Note: If there is no hole in the wall, you need to pull the tail cable out from the side before installing the mounting bracket. Please remove the plug from the slot and ensure that the tail cable is in the side wire trough before tightening the screws of the mounting bracket.

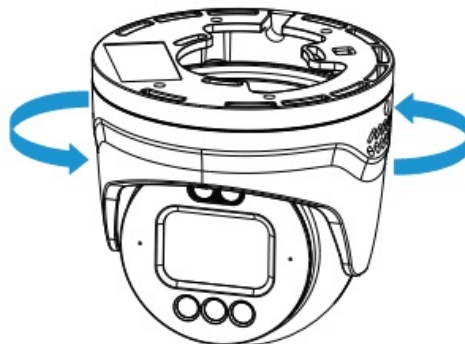


Step5: After attaching the camera to the mounting bracket, tighten the horizontal limit screw.

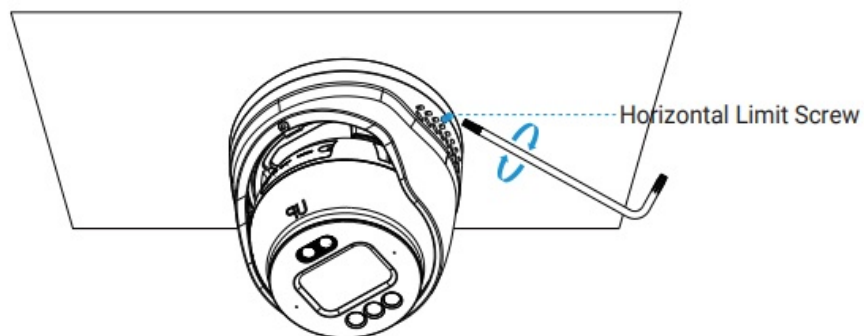


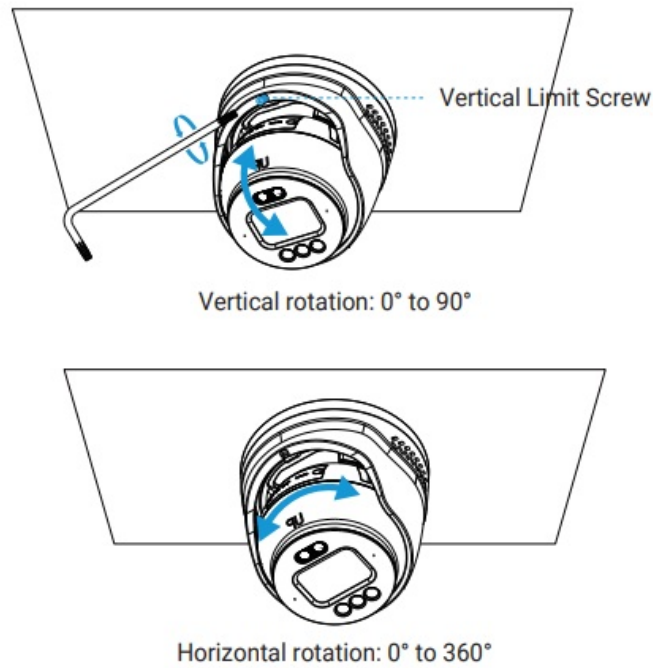
Step 6: Adjust the camera position by loosening the vertical limit screw and rotating the camera to match the scene.

Note: You can adjust the camera angle as needed. The horizontal pan range is from 0° to 360°, the vertical tilt range is from 0° to 90°, and the rotation range is also from 0° to 360°.



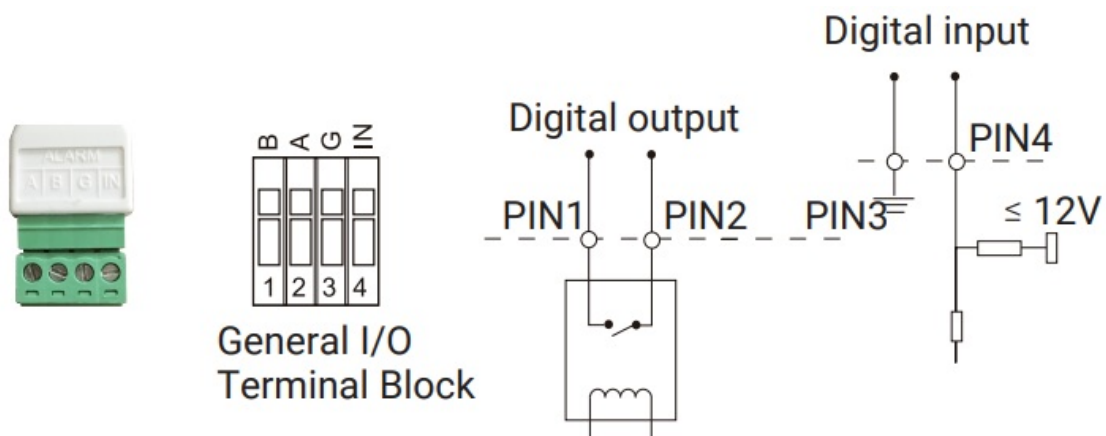
Overall camera rotation: 0° to 360°





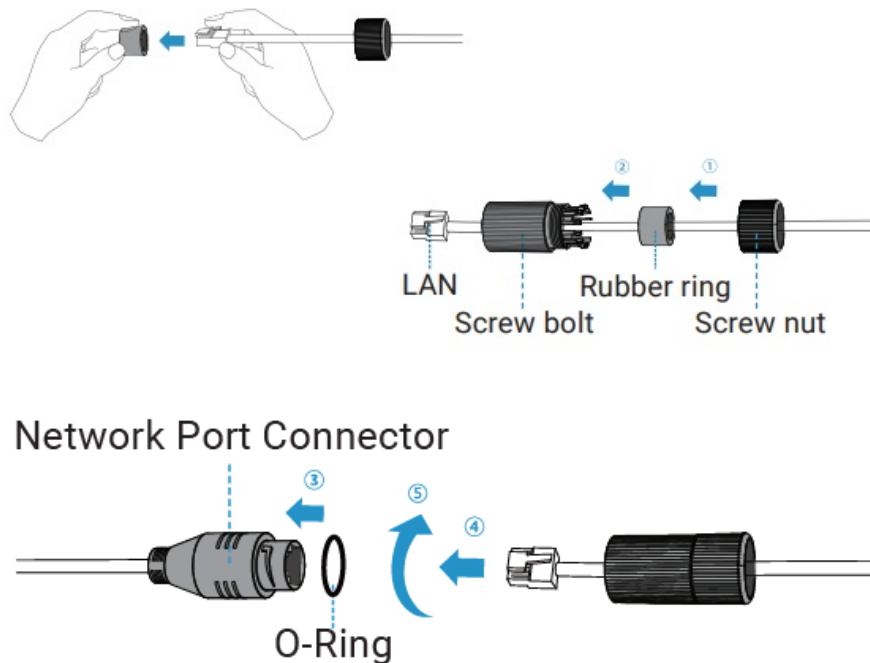
Step7: Finish the installation.

How to Connect to Alarm Interface



- **PIN1:** Alarm Output NC/NO 24V DC 1A
- **PIN2:** Alarm Output NC/NO 24V DC 1A
- **PIN3:** Alarm Input NC/NO $\leq 12V$
- **PIN4:** Alarm Input NC/NO $\leq 12V$

How to Connect the Water-proof Connector



Step1: Get the network cable through the screw nut, rubber ring and the screw bolt;

Step2: Insert the rubber ring into the screw bolt;

Step3: Connect the screw nut to the screw bolt;

Step4: Place the O-Ring on the network port connector;

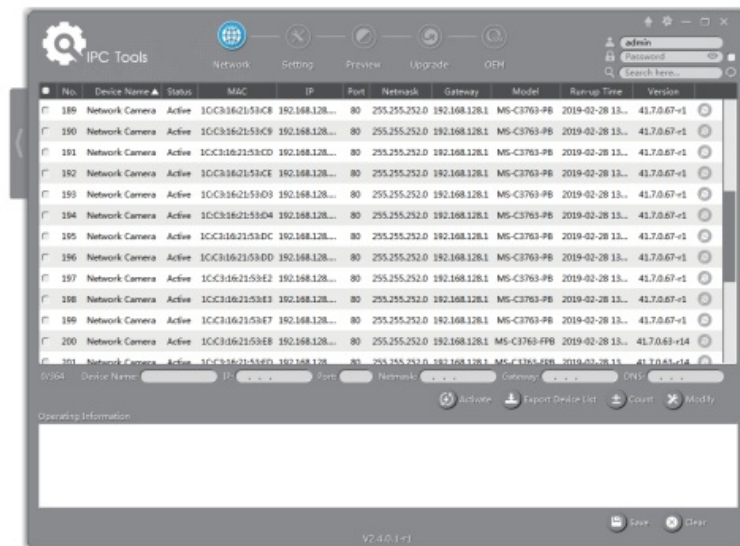
Step5: Connect the RJ45 to the network port connector, tighten the screw bolt and the connector.

Note:

Please tightly wrapped all cable-out interface with adhesive tape at last to prevent them from water.

Assigning an IP Address by Using Smart Tools

Smart Tools is a software tool which can automatically detect multiple online Milesight network cameras in the LAN, set IP addresses, and manage firmware upgrades. It's recommended to use when assigning IP addresses for multiple cameras.



The steps to change the IP of cameras are as below:

1. Start Smart Tools, click the IPC Tools page, then enter the device information, such as IP address, MAC address, Port number, Netmask, and Gateway, then all related Milesight network cameras in the same network that will be shown.
2. Select a camera or multiple cameras according to the MAC addresses.
3. Click “Activate” to set the password when using the cameras for the first time (Password must be 8 to 32 characters long, contain at least one number and one letter), and set three security questions (If you forget the password, you can reset the password by answering three security questions correctly).
4. Type the user name and password you set, change the IP address or other network values, and then click “Modify” button.
5. By double clicking the selected camera or the browser of interested camera, you can access the camera via web browser directly.

More usage of Smart Tools, please refer to the “Smart Tools User Manual”.

Assigning an IP Address via Browser

If the network segment of the computer and that of the camera are different, please add some 192.168.5.xx(255.255.255.0) for your PC to get access to your cameras, more details can be found on “Milesight Network Camera Quick Start”.

Accessing from the Web Brower

The camera can be used with the most standard operating systems and browsers. The

recommended browsers are Internet Explorer, Firefox, Chrome, Safari. More information about the plugin installation, please refer to the troubleshooting:

5. Milesight-Troubleshooting-Plugin Installation on Windows-IPC

6. Milesight-Troubleshooting-Plugin Installation on MAC

FCC Statement

Any Changes or modifications not expressly approved by the party responsible for compliance could void the user's authority to operate the equipment. This device complies with part 15 of the FCC Rules. Operation is subject to the following two conditions:

1. This device may not cause harmful interference, and
2. This device must accept any interference received, including interference that may cause undesired operation.

Note: This equipment has been tested and found to comply with the limits for a Class B digital device, pursuant to part 15 of the FCC Rules. These limits are designed to provide reasonable protection against harmful interference in a residential installation. This equipment generates, uses and can radiate radio frequency energy and, if not installed and used in accordance with the instructions, may cause harmful interference to radio communications. However, there is no guarantee that interference will not occur in a particular installation. If this equipment does cause harmful interference to radio or television reception, which can be determined by turning the equipment off and on, the user is encouraged to try to correct the interference by one or more of the following measures:

- Reorient or relocate the receiving antenna.
- Increase the separation between the equipment and receiver.
- Connect the equipment into an outlet on a circuit different from that to which the receiver is connected.
- Consult the dealer or an experienced radio/TV technician for help.

FCC Radiation Exposure Statement:

This equipment complies with FCC radiation exposure limits set forth for an uncontrolled environment. This equipment should be installed and operated with minimum distance 20cm between the radiator& your body. This transmitter must not be co-located or operating in conjunction with any other antenna or transmitter.

www.milesight.com

FAQs


What should I do if I encounter fogging when opening the front case in a humid environment?

To prevent fogging, ensure to open the front case in a dry environment. In case of fogging, allow the camera to dry completely before using it again.

Can I use a different power input other than DC 12V?

It is recommended to use DC 12V as the power input to ensure proper functioning of the camera. The use of a different voltage may damage the device.

Documents / Resources

	<p>Milesight AI TrueColor Turret Network Camera [pdf] User Guide</p> <p>AI TrueColor Turret Network Camera, TrueColor Turret Network Camera, Turret Network Camera, Network Camera</p>
---	--

References

- [User Manual](#)

📁 Milesight

💎 AI TrueColor Turret Network Camera, Milesight, Network Camera, TrueColor Turret Network Camera, Turret Network Camera

Leave a comment

Your email address will not be published. Required fields are marked *

Comment *

Name

Email

Website

☐ Save my name, email, and website in this browser for the next time I comment.

Post Comment

Search:

e.g. whirlpool wrf535swhz

Search

[Manuals+](#) | [Upload](#) | [Deep Search](#) | [Privacy Policy](#) | [@manuals.plus](#) | [YouTube](#)

This website is an independent publication and is neither affiliated with nor endorsed by any of the trademark owners. The "Bluetooth®" word mark and logos are registered trademarks owned by Bluetooth SIG, Inc. The "Wi-Fi®" word mark and logos are registered trademarks owned by the Wi-Fi Alliance. Any use of these marks on this website does not imply any affiliation with or endorsement.