



MILESCRAFT 3406 GrabberPRO Push block for Table Saws Router Tables Instruction Manual

[Home](#) » [MILESCRAFT](#) » MILESCRAFT 3406 GrabberPRO Push block for Table Saws Router Tables Instruction Manual 

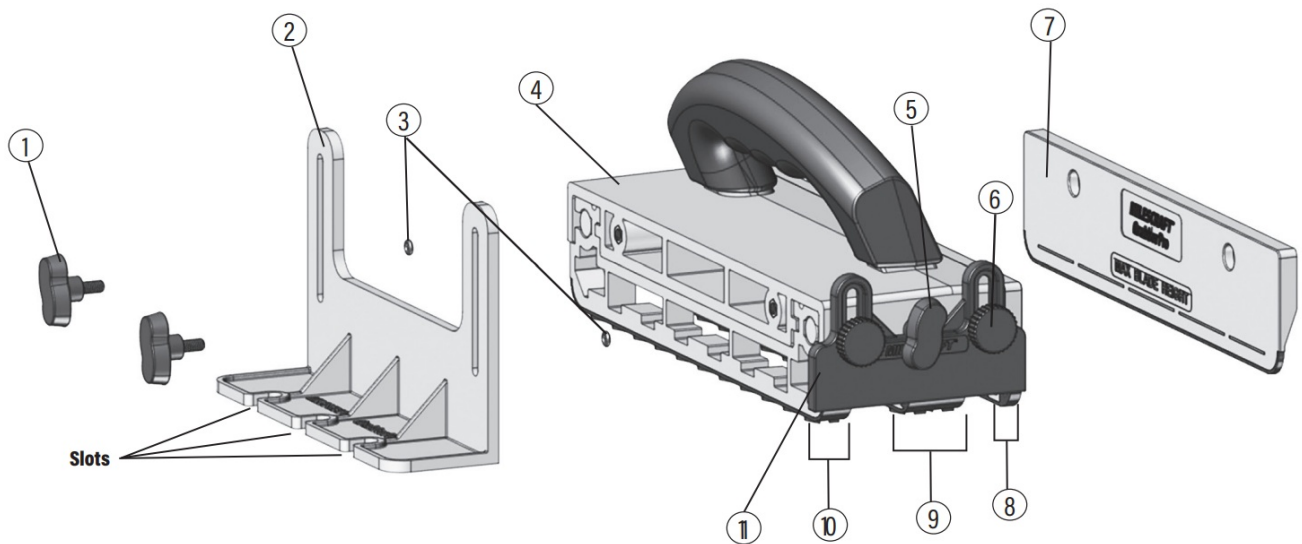


3406 GrabberPRO Push block for Table Saws Router Tables Instruction Manual

Contents

- [1 OVER VIEW](#)
- [2 PACKAGE CONTENTS:](#)
- [3 SAFETY WARNING](#)
- [4 MAINTENANCE](#)
- [5 ASSEMBLING THE UNIT](#)
- [6 MINIMUM AND MAXIMUM CUTTING WIDTHS](#)
- [7 GrabberPRO™ CONFIGURATIONS](#)
- [8 USING THE ADJUSTABLE HEEL](#)
- [9 REPLACEMENT PARTS](#)
- [10 Documents / Resources](#)
 - [10.1 References](#)
- [11 Related Posts](#)

OVER VIEW



1. M5 x 0.8 x 10.5 S-Knob Bolt (2)
2. Angled Support Foot
3. Rubber Gasket (4)
4. Main Body with Handle
5. M5 x 0.8 x 30 S-Knob Bolt (2)
6. M5 x 0.8 x 16 Thumb Knob Bolt (2)
7. 1/8" Push Block Leg with Pad
8. 1/4" Push Block Leg with Pad
9. 1" Push Block Leg with Pad
10. 1/2" Push Block Leg with Pad
11. Adjustable Heel

PACKAGE CONTENTS:

Unpack all items and check with Page 1 and "Replacement Parts table" (see page 16).

Make sure all items are accounted for before discarding any of the packing material. For any missing parts, contact Customer Service at info@milescraft.com or 1-224-227- 6930 in U.S. and Canada. Outside of the U.S and Canada dial 001-224-227-6930.



SAFETY WARNING

Read, understand, and follow your power tool manufacturer's instructions for safety. Always wear safety glasses or eye shields before commencing power tool operation. Always keep hands, face, hair, loose clothing, and body at a safe distance from spindles and cutting tools. Always keep a firm grip on tool handles when in operation. Always disconnect from power source before adjusting power tools.

PRECAUTIONS AND SAFETY

The GrabberPRO™ is intended to be used with table saws, router tables, and band saws which are not manufactured by Milescraft. Always follow your manufacturer's instructions when operating dangerous machinery. Be sure to read and follow all safety precautions below.

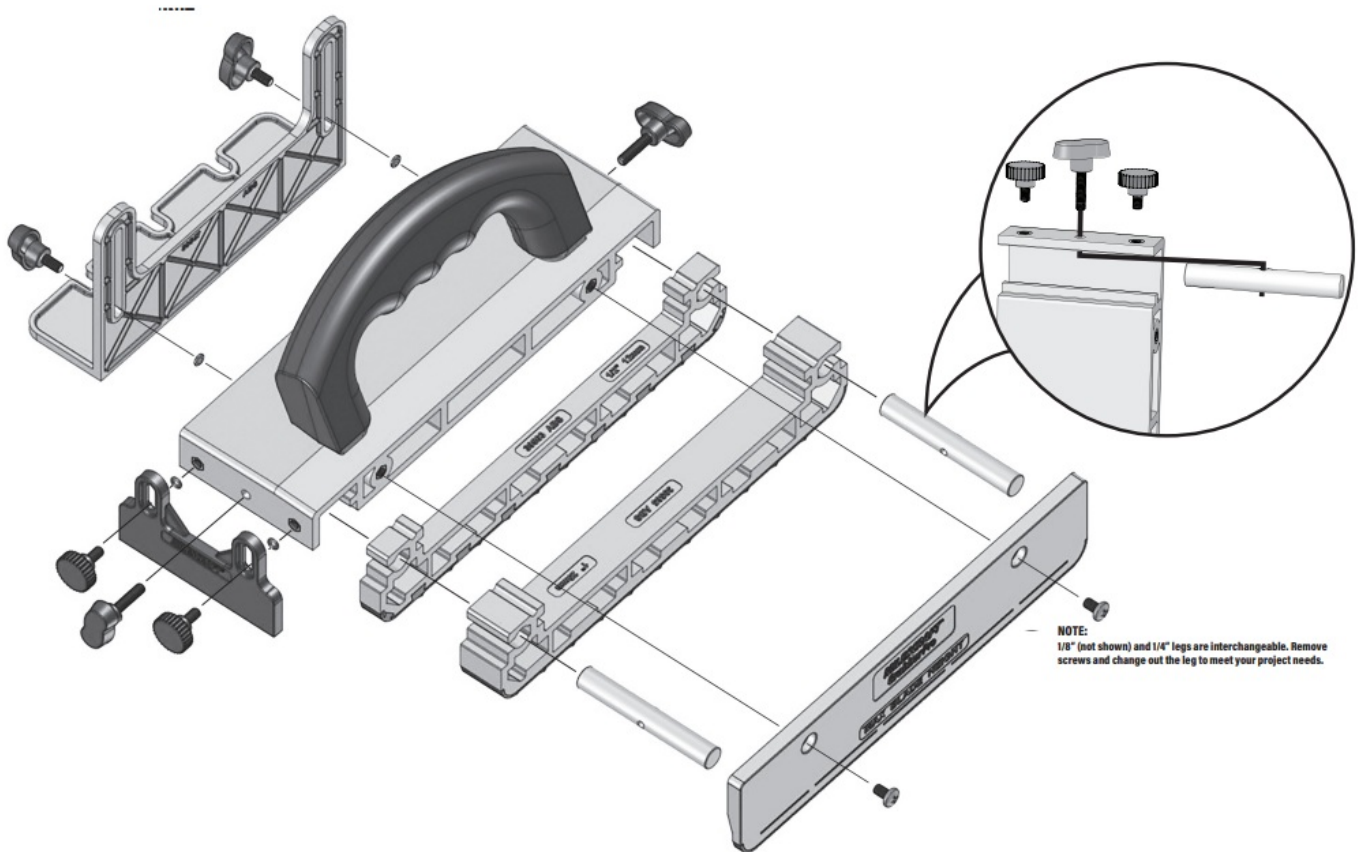
SAFETY WARNING:

- A minimum of two legs MUST be installed during any cutting operation.
- Thoroughly inspect all components of the GrabberPRO™ before every use.
- Position legs so that they contact board on both sides of saw blade when using a table saw.
- Always set the GrabberPRO™ so that the legs will be clear of cutting blade.
- Only use GrabberPRO™ on a flat workpiece where legs can maintain maximum contact and grip without rocking.
- Make sure that GrabberPRO is always contacting your fence in order to maintain constant control while feeding/cutting material.
- The saw blade must not be set more than 3/8" higher than the top surface of a flat workpiece.
- Do not use this tool until you have read and understand all safety warnings included. Failure to follow these safety instructions may result in bodily injury.
- Always set blade height to the minimum necessary to cut through your workpiece. Always wear safety glasses or eye shields before commencing power tool operation. Always keep hands, face, and body at a safe distance from spindles and cutting tools. Always keep a firm grip on tool handles when in operation.
- Do not use this product if the gripping surface on the bottom is damaged. To clean dust build-up on the gripping surface, use warm water and gentle soap.
- Make sure S-Knobs and Thumb Knobs are always securely tightened when using the GrabberPRO™ to prevent loose pieces on your work surface. Check them regularly and between cutting passes.
- Assure Adjustable Heel is clear of router bit when using with router tables.

MAINTENANCE

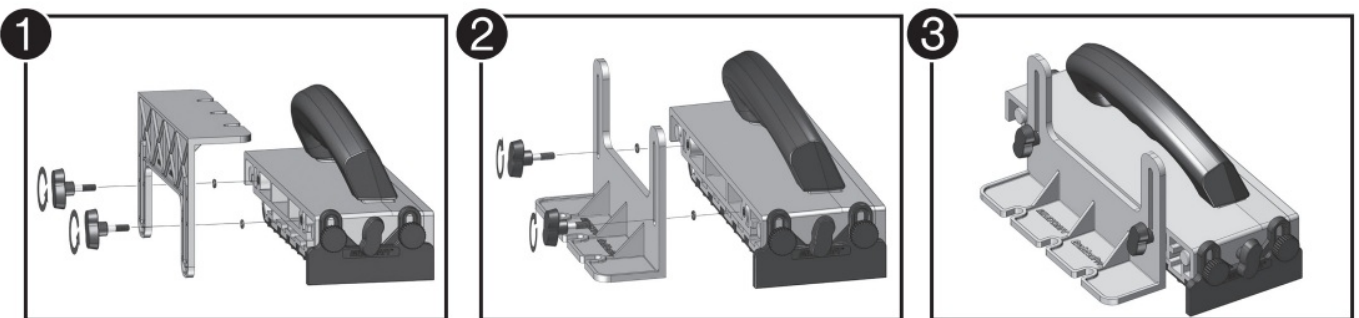
- Occasionally check and clean the push block leg gripping surface with compressed air or mild soap and water.
- Do not use this tool if any of the components are damaged. Please contact Miles Craft or visit our website for replacement parts.
- When not in use, store this product on a flat and clean surface.

ASSEMBLING THE UNIT



ASSEMBLING YOUR GrabberPRO™

1. Remove the Angled Support Foot from the GrabberPRO™ by removing the S-Knob Bolts until the Angled Support Foot comes off of the unit. Remove the small black rubber gaskets from the S-Knob Bolts and remove from the Angled Support Foot (see img. 1).
 2. If you choose to use the Angled Support Foot, position the Angled Support Foot so it is resting flat on your worksurface and away from the GrabberPRO™. Insert the S-Knob Bolts back into each slot on the side of the Angled Support Foot and re-attach rubber gaskets. Place bolts in aligned holes and tighten S-Knobs to re-secure the Angled Support Foot to the GrabberPRO™ (see img. 2).
- NOTE:** If you are not using the Angled Support Foot, then adjust your legs accordingly to your cut. It is our recommendation to leave the Angled Support Foot on.
3. You are now ready to use your GrabberPRO™ (see img. 3).

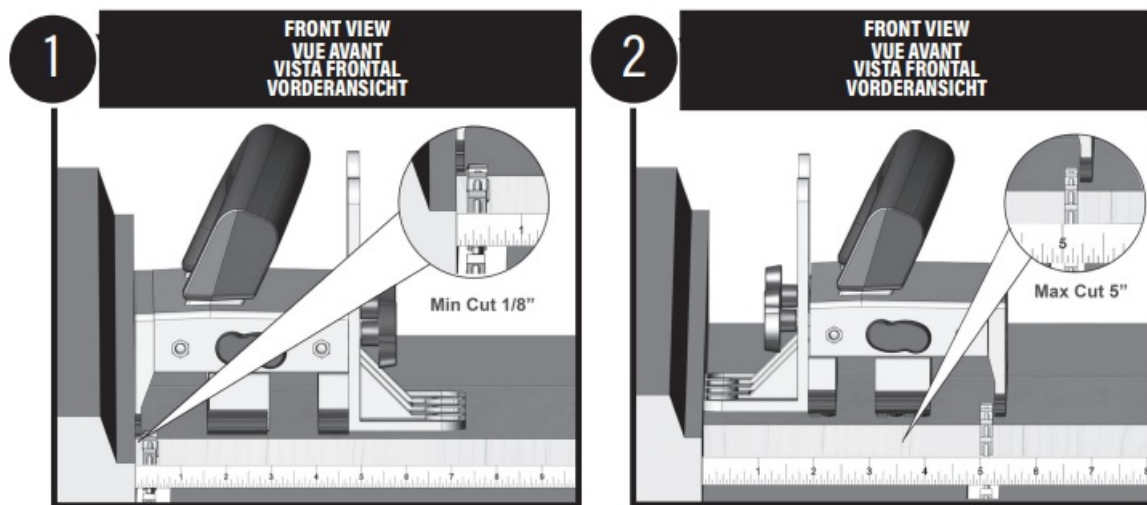


MINIMUM AND MAXIMUM CUTTING WIDTHS

1. Minimum cutting width is 1/8" with 1/8" leg on the side closest to the fence.(see img. 1)
2. Maximum cutting width is 5" with the Angled Support Foot leg flush against the fence and the 1/4" leg on the

outside of the GrabberPRO™. (see img. 2)

HINT: If you need to cut wider boards and need more support, we recommend using the Milescraft 1406 FeatherBoard.



GrabberPRO™ CONFIGURATIONS

NOTE: HANDLE SHOULD ALWAYS FACE AWAY FROM THE FENCE.

1/8" LEG CONFIGURATION

1. Use the 1/8" push block leg against the fence for cutting width (Inside Cut) of up to 1/4" (see img. 1).

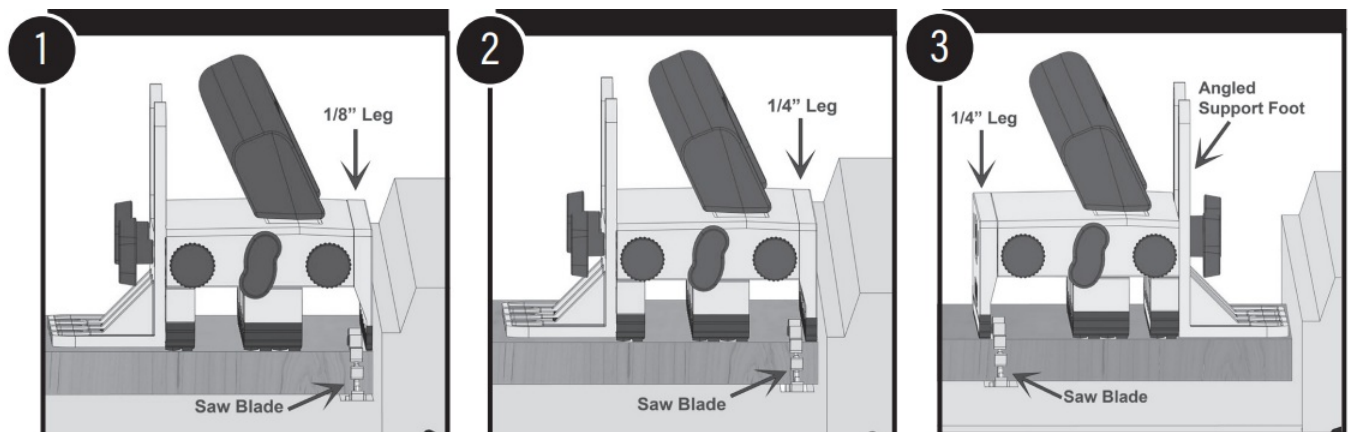
1/4" LEG CONFIGURATION

2. Use the 1/4" push block leg against the fence for cutting width (Inside Cut) of 1/4" or over (see img. 2).

ANGLED SUPPORT AND 1/4" LEG CONFIGURATION

3. Use the Angled Support Foot flush against the fence and the 1/4" leg on the outside of the GrabberPRO™, for cutting width (inside cut) of up to 5" (see img. 3).

ADJUSTABLE HEEL REMOVED FOR CLARITY



GrabberPRO™ CONFIGURATIONS CONTINUED. . .

USING THE GrabberPRO™ WITH THE ANGLED SUPPORT FOOT EXTENDED

1. The Angled Support Foot is intended to help support the GrabberPRO™ on your work surface and material. The foot can be lowered to maintain contact with your work surface when GrabberPRO™ is on top of your

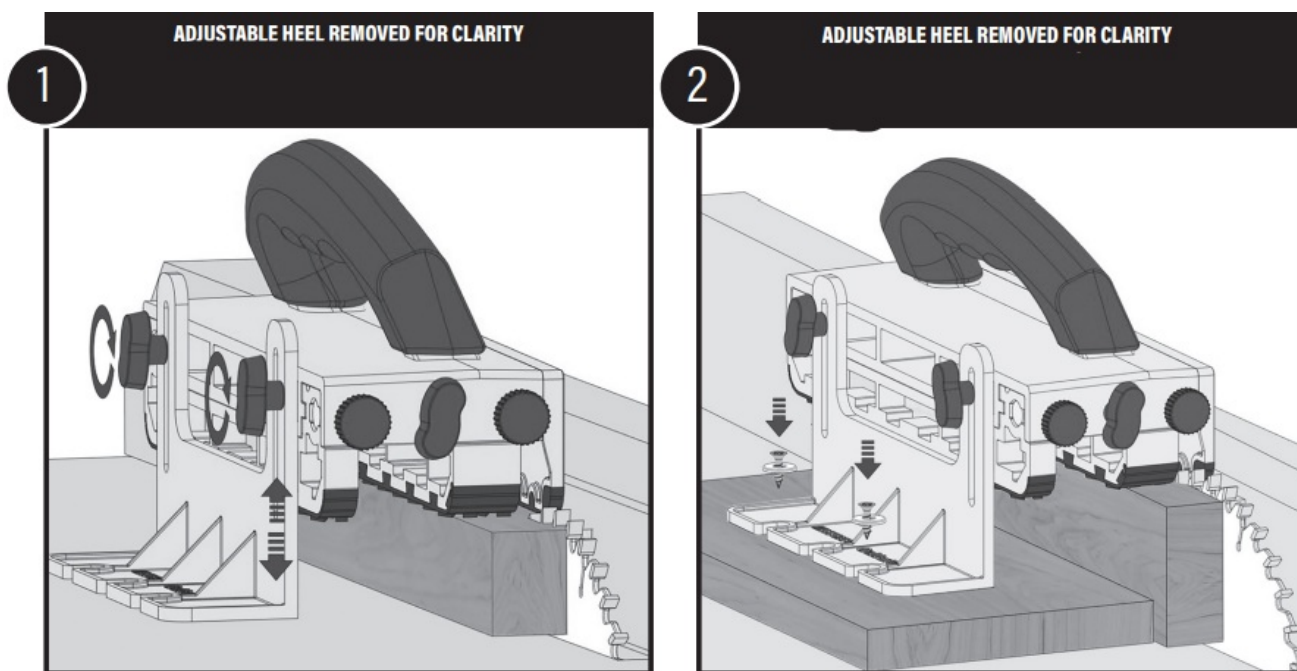
board providing more support.

ALWAYS MAKE SURE THE GrabberPRO™ IS LEVEL ON YOUR WORKPIECE.

2. Use the Angled Support Foot for extra support when the workpiece isn't wide enough, when making thin cuts, or when one of the legs of the GrabberPRO™ is unsupported.

The Angled Support Foot is used as a stand to keep the jig secured by adjusting the height. Loosen the S-Knobs, adjust the height of Angled Support Foot accordingly depending on the height of your workpiece, and tighten the S-Knobs (see img. 1).

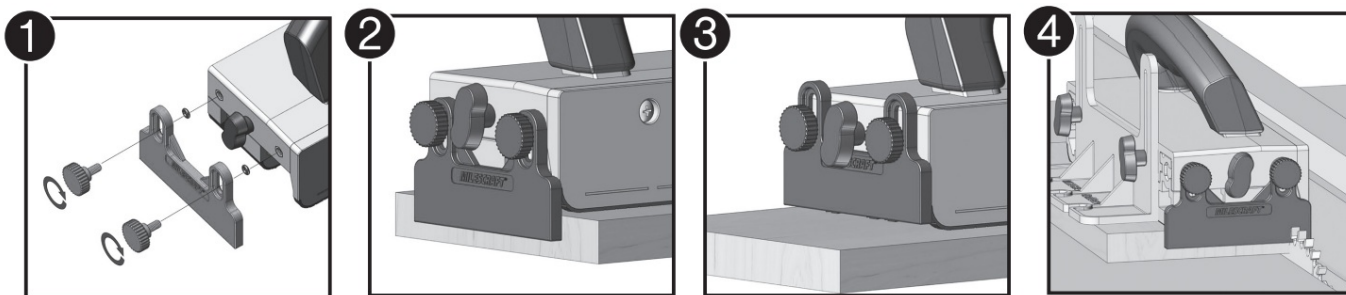
NOTE: When cutting a piece that is over 2" tall, use the slots on the Angled Support Foot to secure the jig to a support piece, if necessary. Use washers and screws (not included). (see img. 2)



USING THE ADJUSTABLE HEEL

NOTE: THE ADJUSTABLE HEEL COMES PRE-ASSEMBLED ON THE GrabberPRO™.

1. To assemble Adjustable Heel, align the slots in the heel with the threaded inserts on the GrabberPRO™ and insert both Thumb Knob Bolts. Slide rubber gaskets onto bolts and then turn the S-knobs clockwise until they are tightened securely (see img.1).
2. The Adjustable Heel hooks onto the tail-end of your workpiece and can retract when midboard (see img. 2). If you have determined that you will NOT use the, or need to use the GrabberPRO™ mid-board, then be sure to push the Adjustable Heel all the way up and fully tighten the Thumb Knob Bolts (see img. 3).
3. To remove the Adjustable Heel, remove both Thumb Knob Bolts by turning counter-clockwise until the Adjustable Heel comes off. If you are using the GrabberPRO™ for a left-hand cut, the Adjustable Heel can be attached to the other end of the GrabberPRO™ to allow it to contact the back edge of workpiece. HINT: The Adjustable Heel is designed to be cut through (see img. 4). Should you need a replacement heel over time, they are available for purchase on our website. For maximum life, the adjustable heel can be flipped for extended use.



USING THE GrabberPRO™ WITH A TABLE SAW

WARNING: BE SURE THE POWER TO YOUR TABLE SAW IS OFF DURING SETUP.

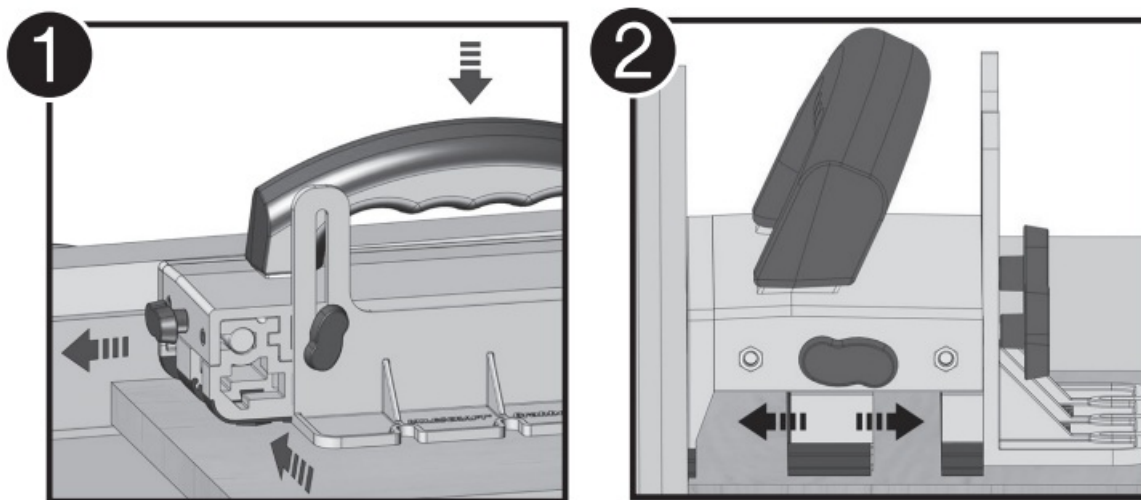
NOTE: ALL TABLE SAW ILLUSTRATIONS SHOW THE RIP FENCE SECURED PARALLEL AND TO THE RIGHT OF THE SAW BLADE.

INSIDE CUT = CUT BETWEEN FENCE AND THE SAW BLADE, IS USUALLY THE KEEPER PIECE.

OUTSIDE CUT = CUT ON THE LEFT SIDE OF SAW BLADE, IS USUALLY THE OFF-CUT PIECE.

1. The main body handle should always face away from the fence. Always use sufficient and constant pressure against the fence, work piece, and cutting blade (see img. 1). Keep a safe distance between the saw blade and the legs of the GrabberPRO
2. Depending on the width of your workpiece and cut, place the board against your fence and against the saw blade. This will allow you to determine which configuration of setting up your GrabberPRO is best suited for your cut (see page 8). Move the legs accordingly (see img. 2).
3. To use the Angled Support Foot see pages 6 and 9.

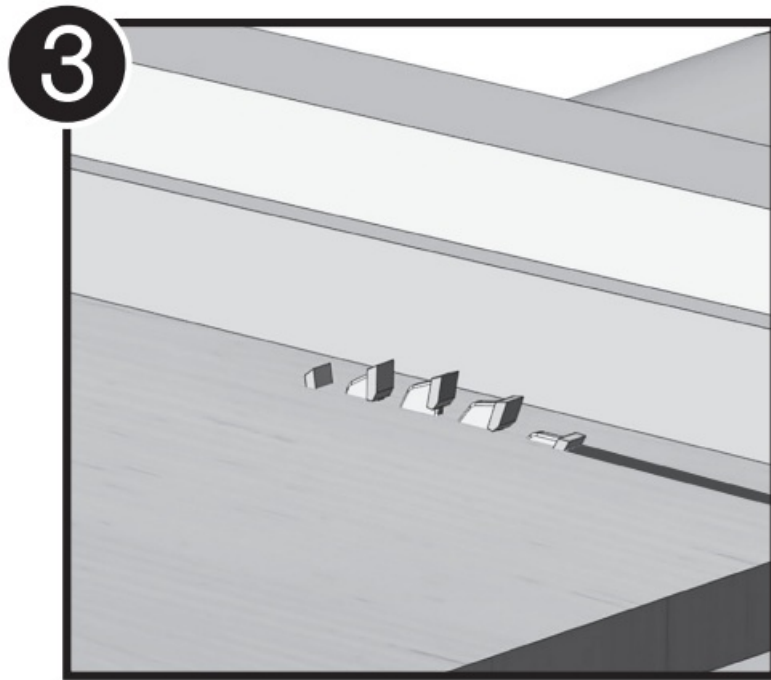
NOTE: The Push Block Legs must ALWAYS be on each side of the saw blade.



4. Raise your saw blade just above your workpiece (see img. 3).

NOTE: The blade height should never exceed 3/8" past the board thickness.

5. If using the Adjustable Heel, please see instructions on page 10.
6. Ensure the GrabberPRO™ is firmly and securely on the work piece.
7. Turn the saw on and you're ready to cut.

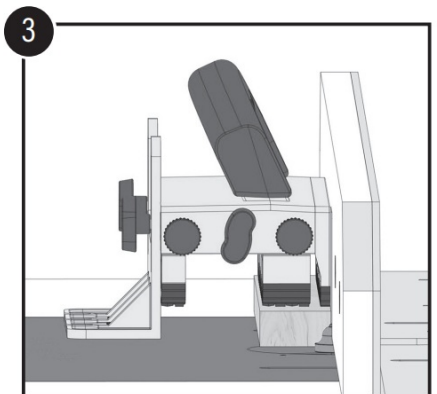
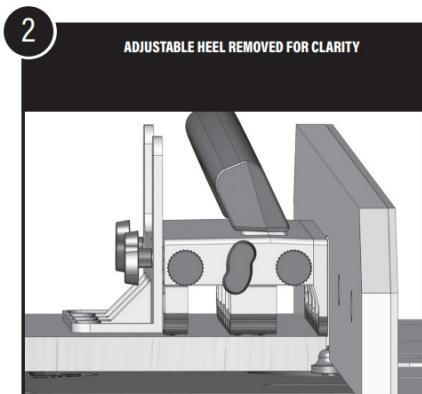
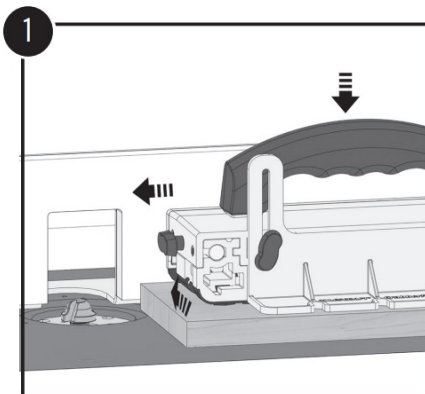


USING THE GrabberPRO¹ WITH A ROUTER TABLE

WARNING: BE SURE THE POWER TO YOUR ROUTER TABLE IS OFF DURING SETUP

The main body handle should always face away from the fence. Always use sufficient and constant downward, forward, and inward pressure against the fence and router bit. Make sure the legs of the GrabberPRO¹ do not come into contact with the router bit (see img.1).

1. Place the board against your fence and against the router bit. Depending on the width of your workpiece and cut, position the legs on the GrabberPRO¹ so that maximum surface contact is made (see img. 2).
2. Use the Angled Support Foot for extra support when the workpiece isn't wide enough or when a push block a leg doesn't meet the outside of the workpiece.
3. The Angled Support Foot is used like a stand to keep the GrabberPRO¹ secure by adjusting the height. Loosen the S-Knobs, adjust the Angled Support Foot, and tighten the S-Knobs (see img. 3).
4. Raise your router bit to desired height.

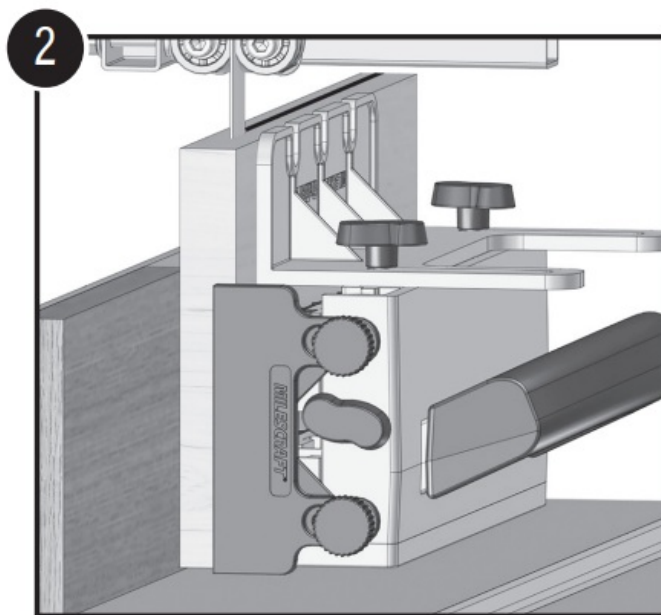
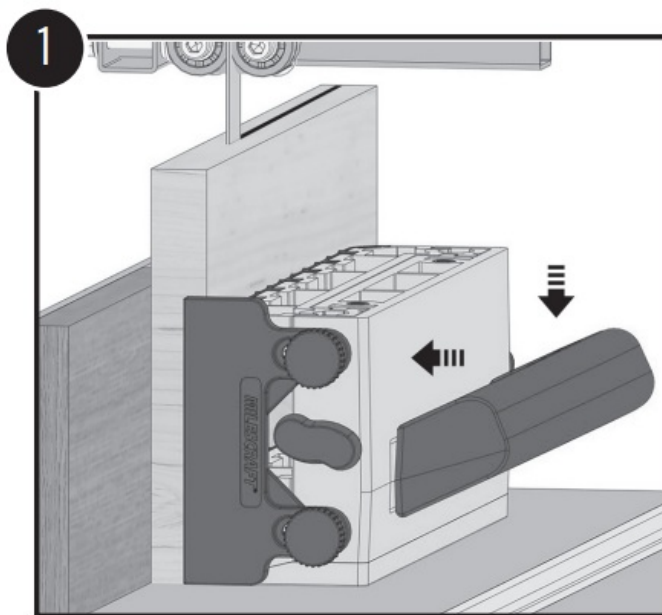
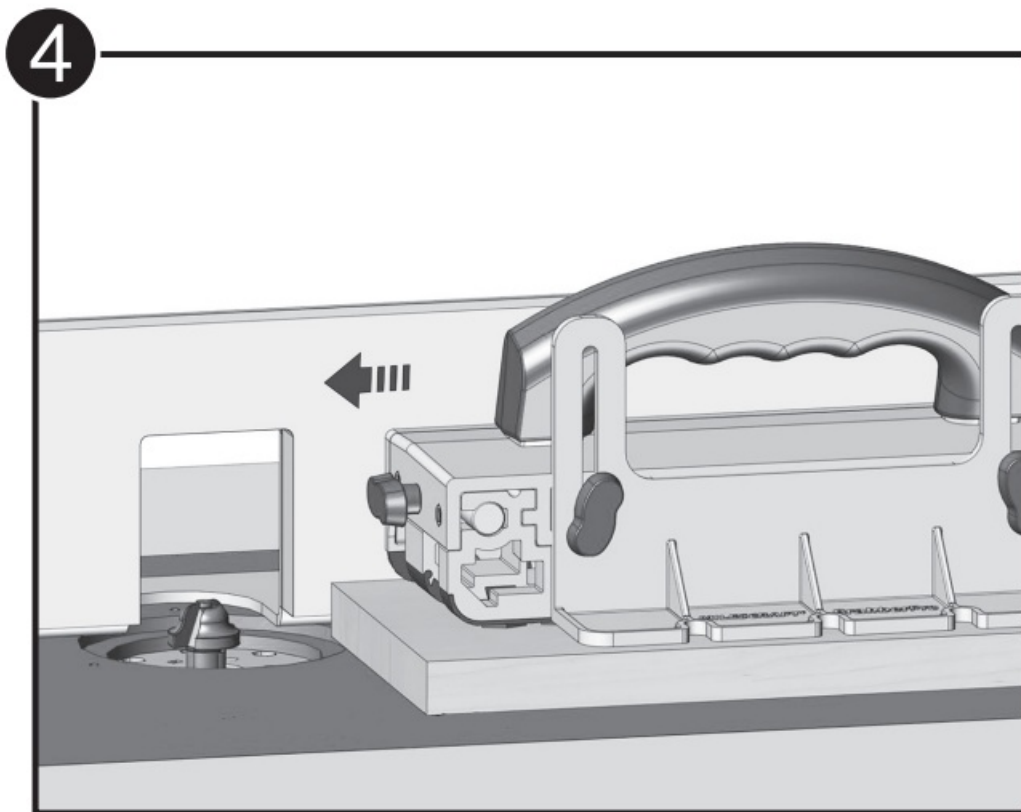


5. To adapt the Adjustable Heel to the workpiece, please reference instructions on page 10.

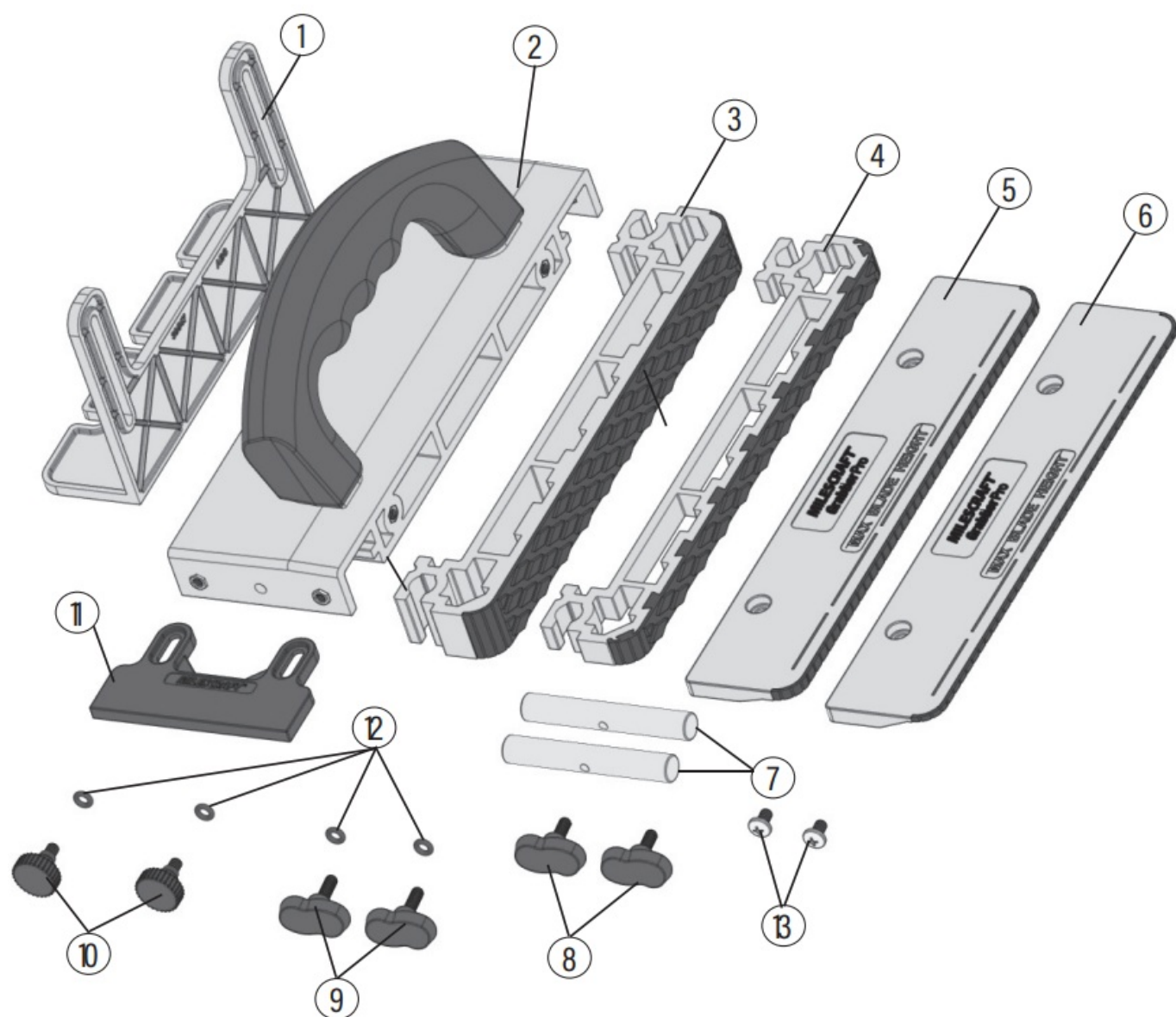
NOTE: When using GrabberPROTM with a router table, make sure that the Adjustable Heel is always clear of router bit and will not contact when making passes. If necessary, remove the Adjustable Heel.

6. Ensure the GrabberPROTM is firmly and securely on the work piece.
7. Turn the router on and you're ready to make your cut.

HINT: ON A ROUTER TABLE, ROUTER BITS RUN COUNTERCLOCKWISE. ALWAYS MAKE SURE TO CUT RIGHT TO LEFT (SEE IMG.4).



REPLACEMENT PARTS



	Part #	Description	Qty
1	39547	Angled Support Foot	1
2	39541	Main Body w/Handle	1
3	39565	1" Push Block Leg with Pad	1
4	39563	1/2" Push Block Leg with Pad	1
5	39561	1/4" Push Block Leg with Pad	1
6	39559	1/8" Push Block Leg with Pad	1
7	21079	Leg Adjustment Rods	2
8	39570	M5 x 0.8 x 10.5 S-Knob Bolt	2
9	39550	M5 x 0.8 x 30 S-Knob Bolt	2
10	39553	M5 x 0.8 x 16 Thumb Knob Bolt	2
11	39554	Adjustable Heel	1
12	20079	Rubber Gasket	4
13	40110	M5 x 0.8 x 8 Pan Head Screws	2

© 2023 Milescraft, Inc.
U.S. Patent(s) # / Patent Pending
www.milescraft.com

Documents / Resources

	<p>MILESCRAFT 3406 GrabberPRO Push block for Table Saws Router Tables [pdf] Instruction Manual</p> <p>3406 GrabberPRO Push block for Table Saws Router Tables, 3406 GrabberPRO, Push block for Table Saws Router Tables, Saws Router Tables, Router Tables</p>
---	---

References

-  [Milescraft - Innovative Solutions for all Woodworking and DIY Projects](#)
-  [Milescraft - Innovative Solutions for all Woodworking and DIY Projects](#)