



MILESCRAFT 1341 Drawer Jig Reversible Drawer Slide Jig Instruction Manual

[Home](#) » [MILESCRAFT](#) » MILESCRAFT 1341 Drawer Jig Reversible Drawer Slide Jig Instruction Manual 

Contents

- [1 MILESCRAFT 1341 Drawer Jig Reversible Drawer Slide Jig](#)
- [2 PRODUCT DESCRIPTION](#)
- [3 PACKAGE CONTENTS:](#)
- [4 SAFETY WARNING:](#)
- [5 INSTALLING CABINET DRAWER SLIDES WITH FACE FRAME](#)
- [6 INSTALLING CABINET DRAWER SLIDES WITHOUT FACE FRAMES](#)
- [7 REPLACEMENT PARTS](#)
- [8 Documents / Resources](#)
 - [8.1 References](#)
- [9 Related Posts](#)



MILESCRAFT 1341 Drawer Jig Reversible Drawer Slide Jig



PRODUCT DESCRIPTION

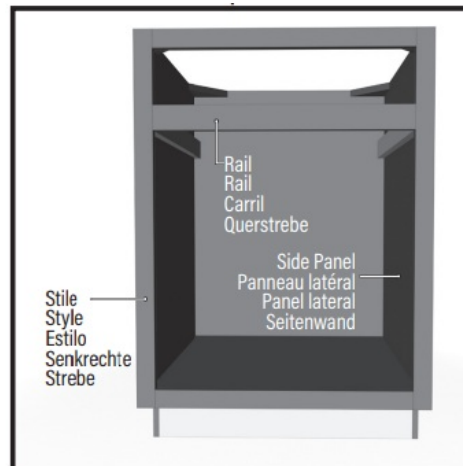


1. Fence
2. Alignment Tab
3. Level
4. Anti-Marring Pads
5. Recessed Clamping Pocket
- 6 — A Line
6. B line

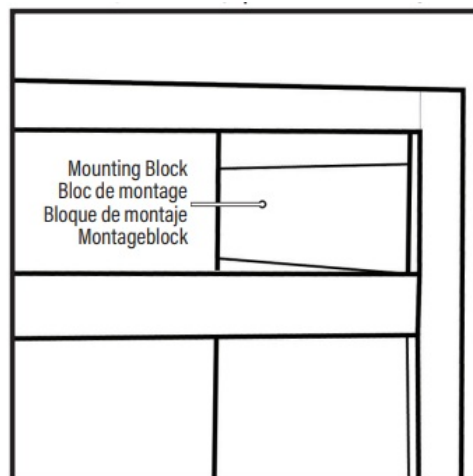
Scan for more information.



Framed Cabinets

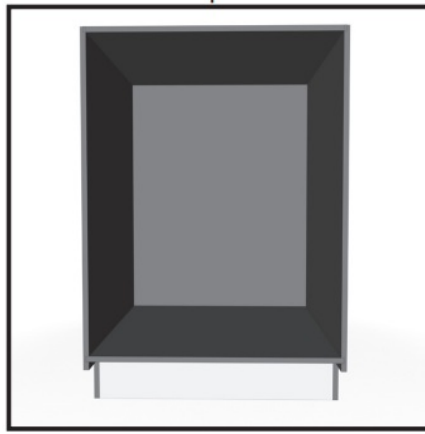


Mounting Block Note



This manual is based on slide installation in custom built cabinets; a mounting block is shown in all framed cabinet images

Frameless Cabinets



PACKAGE CONTENTS:

Unpack all items and check with Figure 1 and “Replacement Parts table” (see page 8). Make sure all items are accounted for before discarding any of the packing material. For any missing parts, contact Customer Service at info@milescraft.com or 1-224-227-6930 in U.S. and Canada. Outside of the U.S. and Canada dial 001-224-227-6930.

SAFETY WARNING:

Read, understand, and follow your power tool manufacturer’s instructions for safety. Always wear safety glasses or eye shields before commencing power tool operation. Always keep hands, face, hair, loose clothing, and body at a safe distance from spindles and cutting tools. Always keep a firm grip on tool handles when in operation. Always disconnect from power source before adjusting power tools.

INSTALLING CABINET DRAWER SLIDES WITH FACE FRAME

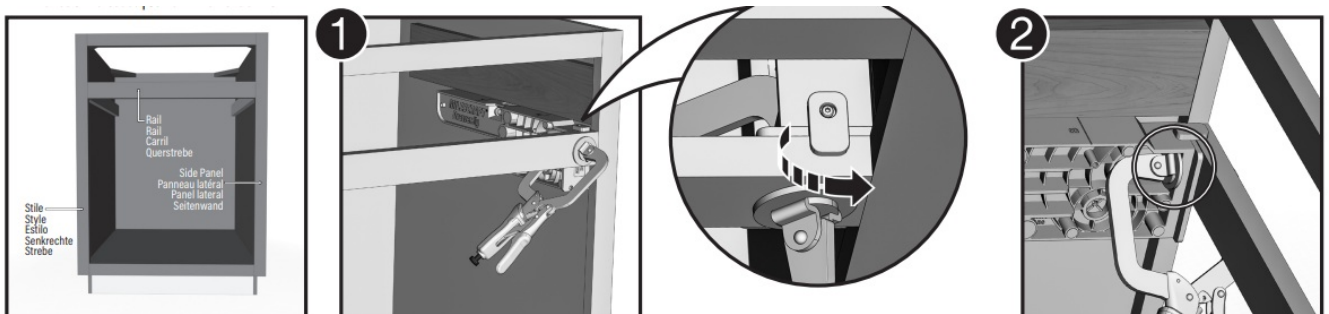
NOTE: Follow your manufacturer’s instructions for installing cabinet slides.

The jigs are labeled “1” and “2”. There are Anti-Marring pads on both sides of each jig to reduce movement and protect cabinets (see call out on p. 1).

1. Rotate the alignment tab on the jig labeled “1” 180°. Place the jig to the right on the inside of the cabinet with the fence facing left. Make sure the alignment tab rests on the rail. (see img. 1).
2. Clamp the jig to the rail flush against the mounting block using the D shaped opening (see img. 2). For secure attachment a Milescraft #4001 Face Clamp or similar is recommended. Verify the jig is flush with the drawer rail and parallel to the cabinet side panel.

NOTE: FOR UNDERMOUNT DRAWER SLIDES, LEAVE THE TAB ROTATED INWARD AND CLAMP TO THE RAIL WITH THE DRAWER SLIDE FLUSH ON TOP OF DRAWERJIG AND RAIL.

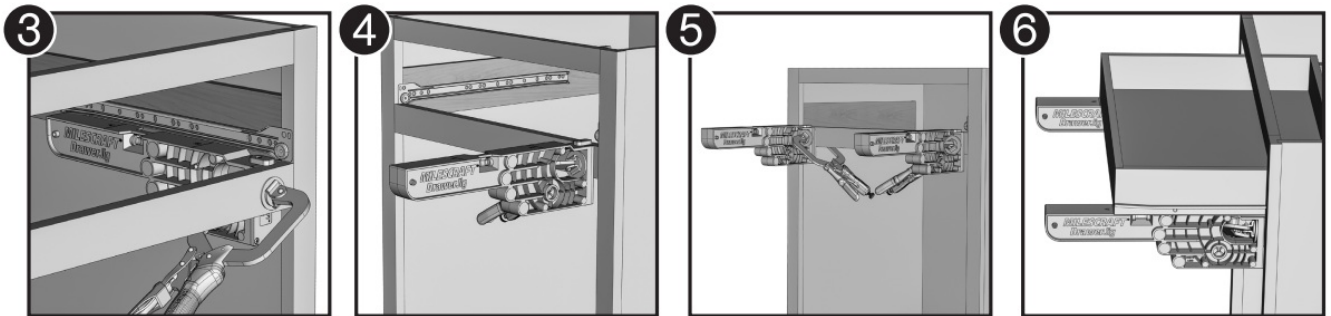
3. Repeat steps for jig labeled “2” on the left side of the cabinet.



4. Place the drawer slides on top of each jig. Make sure the cabinet slides are flush to the mounting block

(see img. 3).

5. With the cabinet slides on the jigs install the cabinet slides per the manufacturers instructions. Remove the jigs.
6. With the alignment tab rotated (see img. 1 callout, p. 4), place jig labeled “1” on the right outside of the cabinet and rail (see img. 4).
7. Clamp the jig to the rail flush using the D shaped opening. For secure attachment a Milescraft #4001 FaceClamp or similar is recommended. Repeat steps for jig labeled “2” on the left side of the cabinet. (See img. 5)
8. Slightly extend the cabinet slides then place the draw-er on the jigs between slides. Position the drawer so the front is on line “A” marked on the jig. (See img. 6).
9. Install the cabinet slide to the drawer per the manufacturers instructions. Remove the jigs.

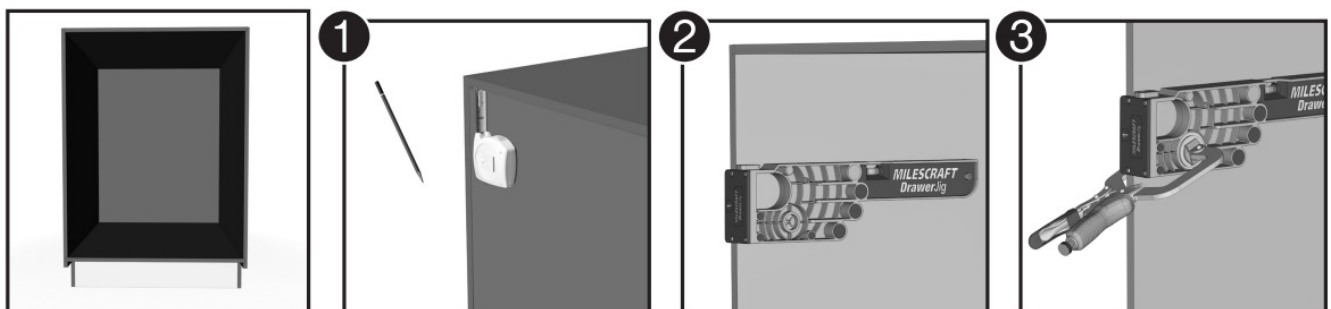


INSTALLING CABINET DRAWER SLIDES WITHOUT FACE FRAMES

NOTE: Follow your manufacturer’s instructions for installing cabinet slides.

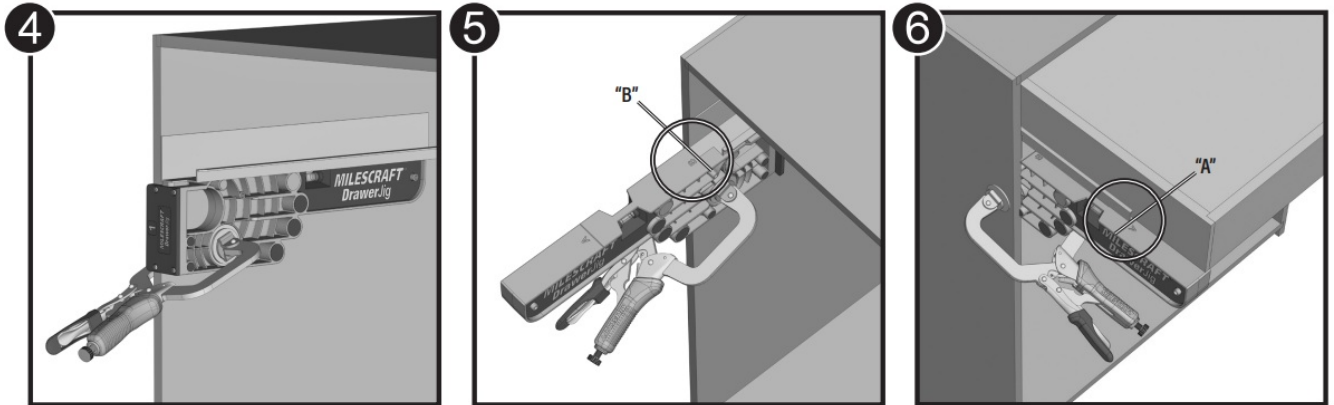
The jigs are labeled “1” and “2”. There are Anti-Marring pads on both sides of each jig to reduce movement and protect cabinets (see call outs on p. 1).

1. Determine the placement of your cabinet drawer. Mark the bottom of the cabinet slide locations on the insides of the cabinet walls (see img. 1).
2. Place jig labeled “1” to the left on the inside of the cabinet with the fence facing left with the tab rotated inward and the fence overhanging the cabinet front(see img. 2).
3. Clamp the jig to the cabinet side panel, using the built-in recessed clamping area, with a Milescraft #4001 Face Clamp or similar. Be sure that the jig is flush to the cabinet wall and aligned to the cabinet slide mark(see img. 3).
4. Repeat steps for jig labeled “2” on the right side of the cabinet.



5. Place the drawer slides on top of each jig flush to the cabinet walls (see img. 4) and install the slides per the manufacturers instructions. Remove the jigs.
6. Place jig labeled “1” to the left inside of the cabinet side panel facing outward and align the jig, at the “B” line, to the cabinet edge flush with the cabinet slides (see img. 5).

7. Clamp the jig to the cabinet wall, using the built-in recessed clamping area, with a MilesCRAFT #4001 Face Clamp or similar (see img. 5). Repeat steps for jig labeled "2" on the right side of the cabinet.
8. Pull the drawer slides onto the Drawer Jig™ until the slides aligns with the "A" line on the Drawer Jig™. Place the drawer on the drawer slides and align the drawer front with the forward edge of the Drawer Jig™ (See img. 6). 9) Install the drawer slide to the drawer per the Manufacturers instructions. Remove the jigs.



REPLACEMENT PARTS

	Part #	Description	Qty
1	30582	Alignment Tabs	2
2	30583	Left Fence	1
3	30584	Right Fence	1
4	42077	M3x 10x TIO Thread Forming Screws	10
5	60657	Left Drawer Jig	1
6	60658	Right Drawer Jig	1

Documents / Resources

	MILESCRAFT 1341 Drawer Jig Reversible Drawer Slide Jig [pdf] Instruction Manual 1341, Drawer Jig Reversible Drawer Slide Jig, Reversible Drawer Slide Jig, Drawer Slide Jig, Slide Jig, 1341, Drawer Jig
--	--

References

-  [MilesCRAFT - Innovative Solutions for all Woodworking and DIY Projects](#)