

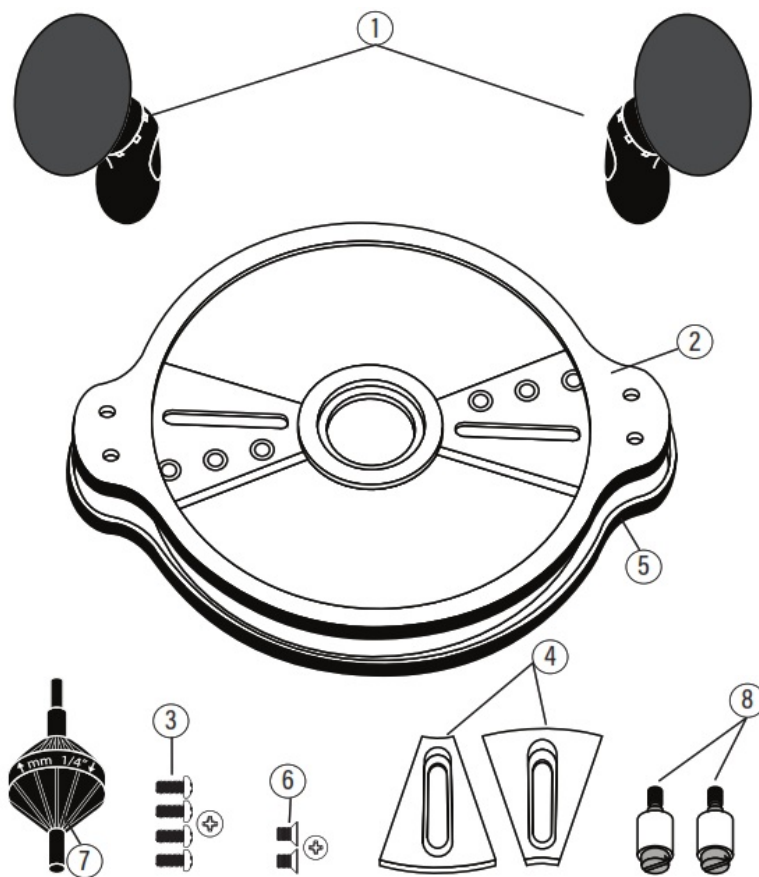


MILESCRAFT 1225 CompactSubBase Compact Router Attachment Instruction Manual

[Home](#) » [MILESCRAFT](#) » MILESCRAFT 1225 CompactSubBase Compact Router Attachment Instruction Manual



Instruction Manual
Compactsubbase™



Model 1225

Contents

[1 1225 CompactSubBase Compact Router Attachment](#)

[2 PACKAGE CONTENTS:](#)

[3 SAFETY WARNING:](#)

[4 HINTS](#)

[5 MOUNTING COMPACTSUBBASE™](#)

[6 TEMPLATE ROUTING](#)

[7 MORTISE ROUTING](#)

[8 Documents / Resources](#)

[8.1 References](#)

[9 Related Posts](#)

1225 CompactSubBase Compact Router Attachment

CompactSubBase™

1. – Handles (2)
2. – Base
3. – Handle Mounting Screws (4)
4. – Adjustable Mounting Inserts (25 – Base Cover)
5. – Base Cover Screws (2)
6. – Centering Pin
7. – Mortise Pins (2)

PACKAGE CONTENTS:

Unpack all items and check with Figure 1 and "Replacement Parts table" (see page 10). Make sure all items are accounted for before discarding any of the packing material. For any missing parts, contact Customer Service at info@milescraft.com or 1-224-227-6930 in U.S. and Canada. Outside of the U.S and Canada dial 001-224-227-6930.

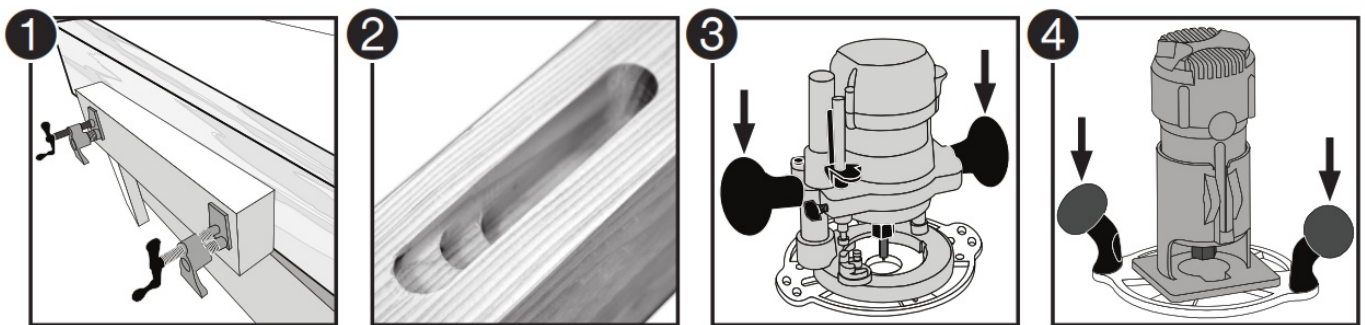
SAFETY WARNING:



Read, understand, and follow your power tool manufacturer's instructions for safety. Always wear safety glasses or eye shields before commencing power tool operation. Always keep hands, face, hair, loose clothing, and body at a safe distance from spindles and cutting tools. Always keep a firm grip on tool handles when in operation. Always disconnect from power source before adjusting power tools.

HINTS

1. It is recommended to fully secure your work piece to your work surface (see img. 1).
2. It is recommended to test cut or rout your design on scrap material that is the same or similar as your final work piece.
3. To achieve the best results, especially with denser material, make multiple passes in increments of 1/4" to 5/16" until you have reached the desired depth of cut (see img. 2).
4. If using a trim router combo with plunge base, the handles that come with the CompactSubBase™ kit may not be necessary (see img. 3).
5. If using a trim router, the handles that come with the CompactSubBase™ kit will be necessary, especially when making mortise cuts and working with templates (see img. 4).

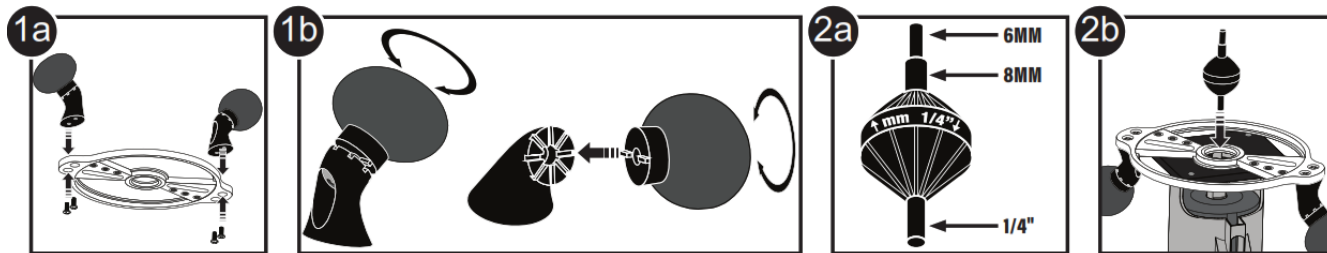


MOUNTING COMPACTSUBBASE™

NOTE: Compatible with trim routers and compact routers.

1. Separate the Base from the Base Cover, mount the handles to the top of the Base by inserting the screws through the bottom of the base and into the screw holes on each handle (see img. 1a). HINT: The knobs of the handles can be adjusted for better comfort by loosening or removing each screw, readjusting the knob into the desired track, and tightening each screw (see img. 1b).
2. Place the base on your router with the handles facing down. The centering pin is designed to fit 1/4", 6mm, and 8mm collets (see img. 2a). Insert the appropriate end of the centering pin into the collet of your router (see img.

2b). Hand tighten collet, ensuring the centering pin does not move.



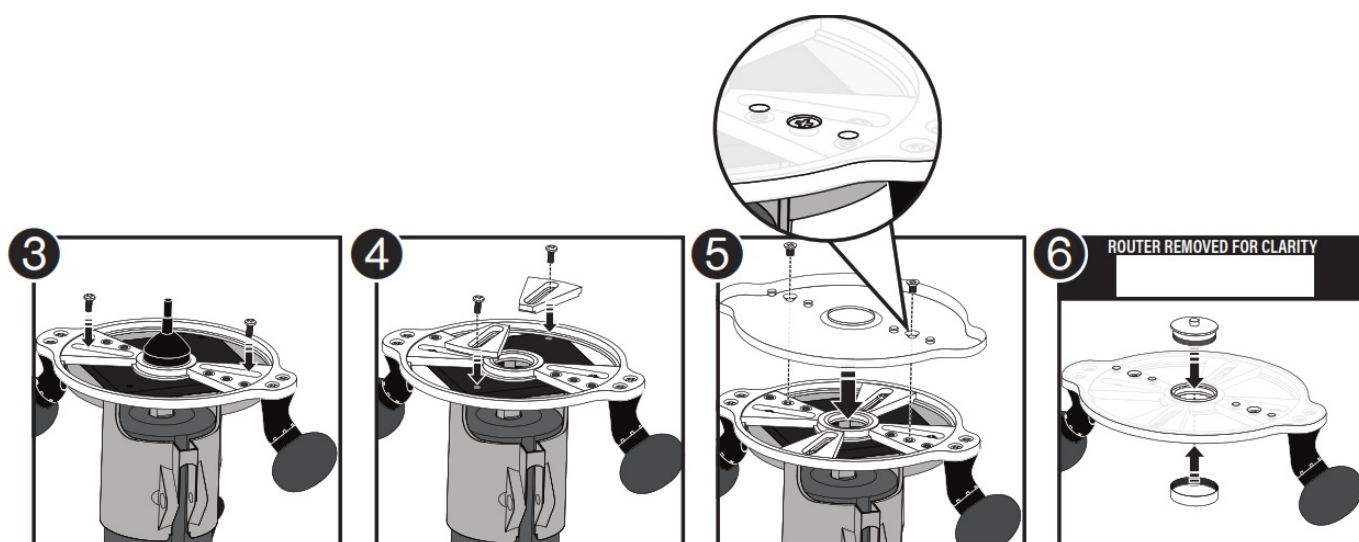
3. Line up one or both of the fixed base slots with the screw holes in the router and insert screws provided with the router. (Do not fully tighten yet). (See img. 3)

HINT: At least one fixed slot needs to be attached to your router.

4. Place the subbase adjustable slot inserts into the track and align the slots with the additional screw holes in the router. Insert screws and tighten (Do not over tighten).

Remove centering pin (see img. 4). HINT: A minimum of three slots must be attached to your router.

5. Place the cover over the subbase and insert the tapered screws into both of the middle screw holes. Tighten the screws. Be sure they are flush with or below the cover (see img. 5).



TEMPLATE ROUTING

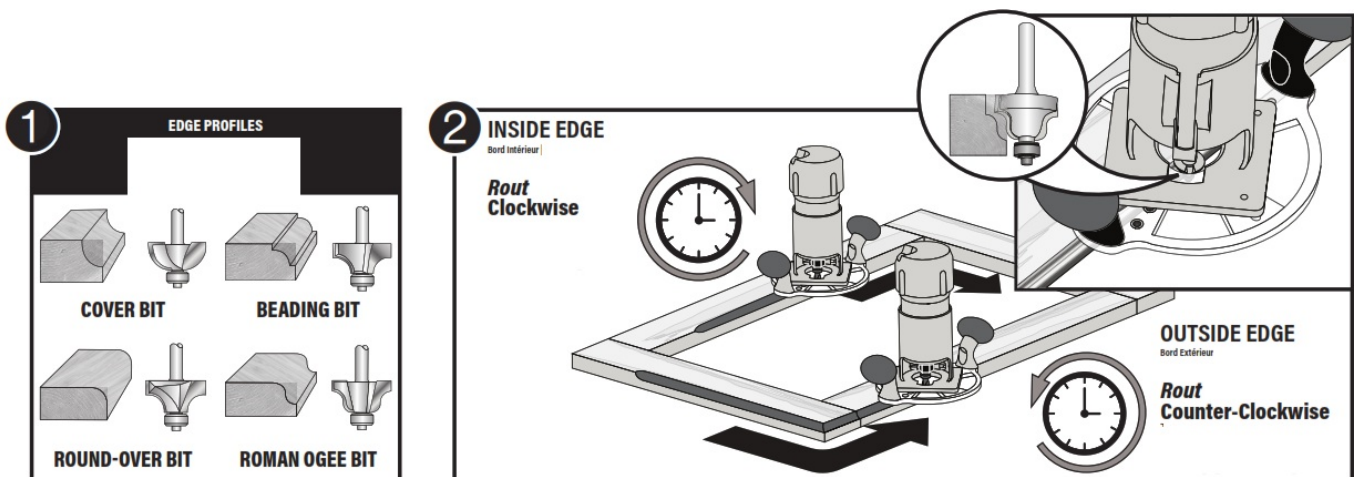
1. Place the bushing (not included) in the center of the assembled subbase. While holding the bushing in place, screw the lock nut (not included) onto the threads of the bushing guide until secured. (See img. 6, p.6)
2. Follow your router manufacturer's instructions for installing router bits.

EDGE ROUTING

NOTE: Bushings are not used for profiles. Router bits must be ball bearing router bits.

HINT: Base and handles add extra support when routing edges.

1. Ideal for narrow boards, routing straight and curved edges (see img. 1).
2. For inside edges, you will want to rout clockwise (see img. 2).
3. For outside edges, you will want to rout counter-clockwise (see img. 2).



MORTISE ROUTING

NOTE: Mortises are used in conjunction with tenons for strong joints for sturdy window frames, door frames, bed frames, table frames, etc. (see img. 1).

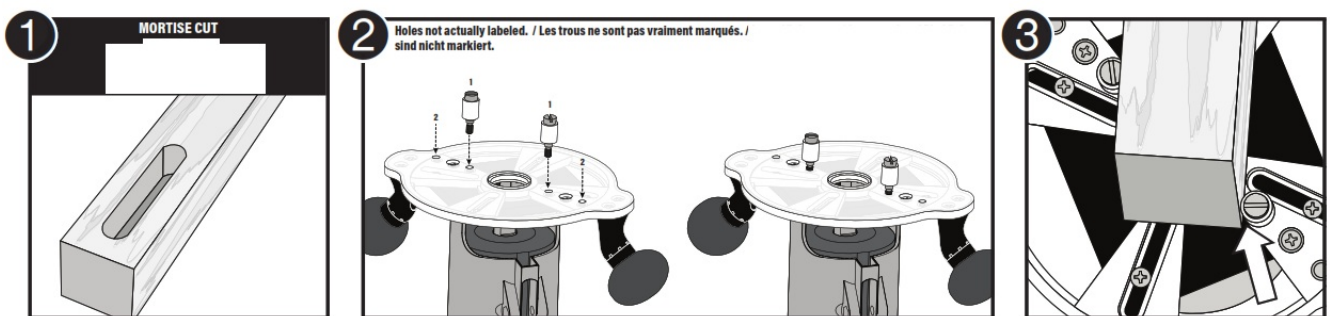
Follow your manufacturer's instructions for proper routing procedures, installing router bits, and adjusting router depth.

1. Insert the mortising pins in one of the two sets of mortising pin holes. This will depend on the size of your work piece (see img. 2).

NOTE: Make sure each mortising pin is equal distance from the center of the base. It's recommended to use a flat head screwdriver to make sure that the mortising pins are adequately tightened.

HINT: Always use the closer mortising pin holes, as long as the work piece fits inbetween the mortising pins; this allows you to get closer to the ends of the work piece before the mortising pins no longer make contact (see img. 3).

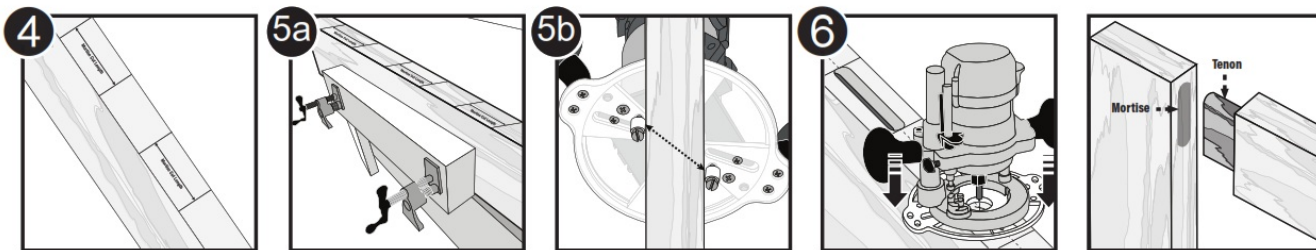
2. Measure and mark the length of your mortise cuts on your work piece (see img. 4).



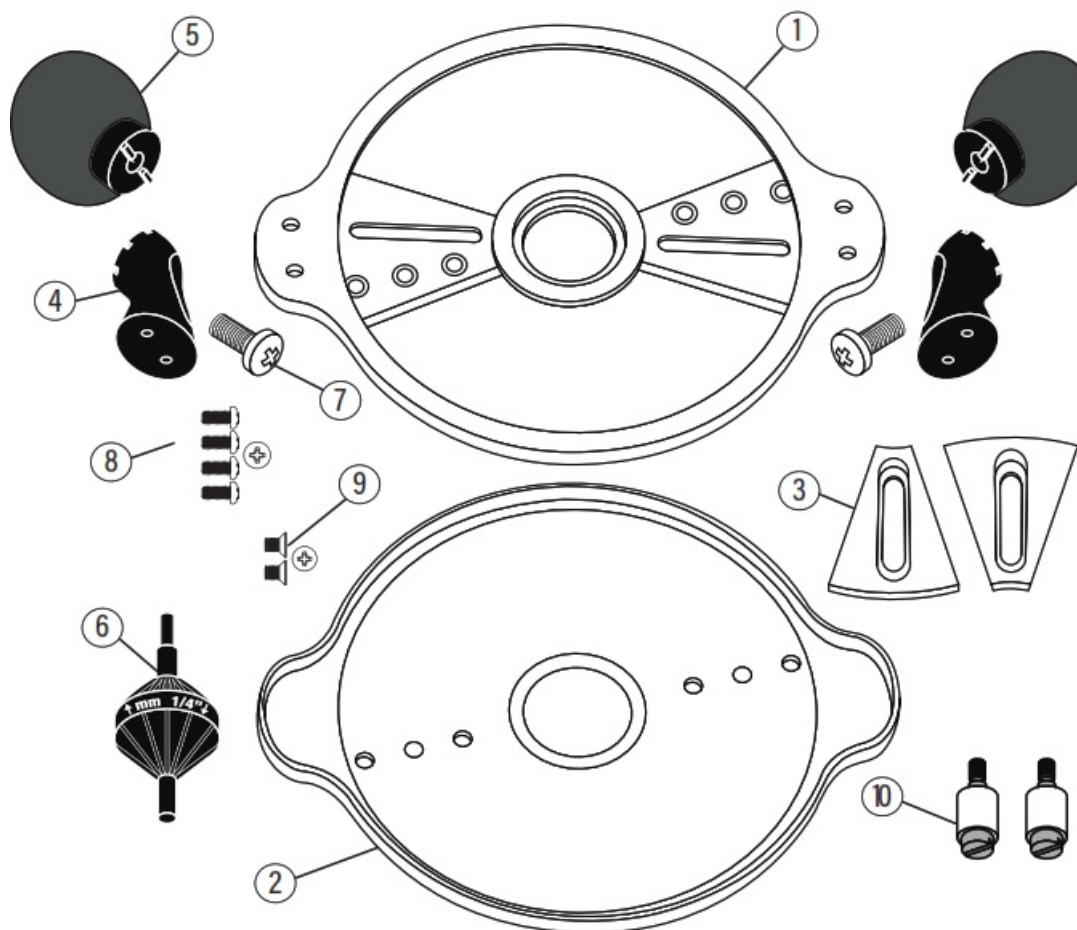
3. Secure your work piece to your work surface (see img. 5a).

NOTE: When cutting your mortise, make sure the mortising pins stay in contact with the work piece (see img. 5b). Apply force in a clockwise direction.

4. Set the desired depth of your router bit and make your cut. It is recommended to use a plunge router when making your mortise cut(s). Place your router on your starting point, turn your router on, and plunge it down to the desired depth (see img. 6).
5. Turn your router off and wait until it completely stops before carefully raising your router from the cut and making your next cut. Repeat steps 4 and 5 as necessary.



CompactSubBase™



| | Part # | Description |
|----|--------|--------------------------------------|
| 1 | 30390 | Base |
| 2 | 30391 | Base Cover |
| 3 | 30392 | Adjustable Mounting Inserts |
| 4 | 30394 | Handle Bases |
| 5 | 30398 | Overmolded Handles |
| 6 | 30399 | 1/4" x 6mm x 8mm Centering Pin |
| 7 | 40040 | M8x1.25x20mm Pan Head Screws |
| 8 | 40041 | M4x0.7x10mm Pan Head Screws |
| 9 | 40042 | M5x0.8x8mm Phillips Flat Head Screws |
| 10 | C60260 | Mortise Pins |

© 2021 Milescraft, Inc. • www.milescraft.com



www.milescraft.com

Milescraft, Inc.

Documents / Resources

| | |
|--|---|
| | <p>MILESCRAFT 1225 CompactSubBase Compact Router Attachment [pdf] Instruction Manual</p> <p>1225, CompactSubBase Compact Router Attachment, Compact Router Attachment, Router Attachment, CompactSubBase Attachment, Attachment, CompactSubBase</p> |
|--|---|

References

-  [Milescraft - Innovative Solutions for all Woodworking and DIY Projects](#)