



miLEDo BAREV R Panel LED Instruction Manual

[Home](#) » [miLEDo](#) » miLEDo BAREV R Panel LED Instruction Manual 



Contents

- [1 BAREV R Panel LED](#)
- [2 INTENDED USE / APPLICATION](#)
- [3 MOUNTING](#)
- [4 FUNCTIONAL CHARACTERISTICS](#)
- [5 USAGE GUIDELINES / MAINTENANCE](#)
- [6 ENVIRONMENTAL PROTECTION](#)
- [7 COMMENTS / GUIDELINES](#)
- [8 Documents / Resources](#)
 - [8.1 References](#)
- [9 Related Posts](#)

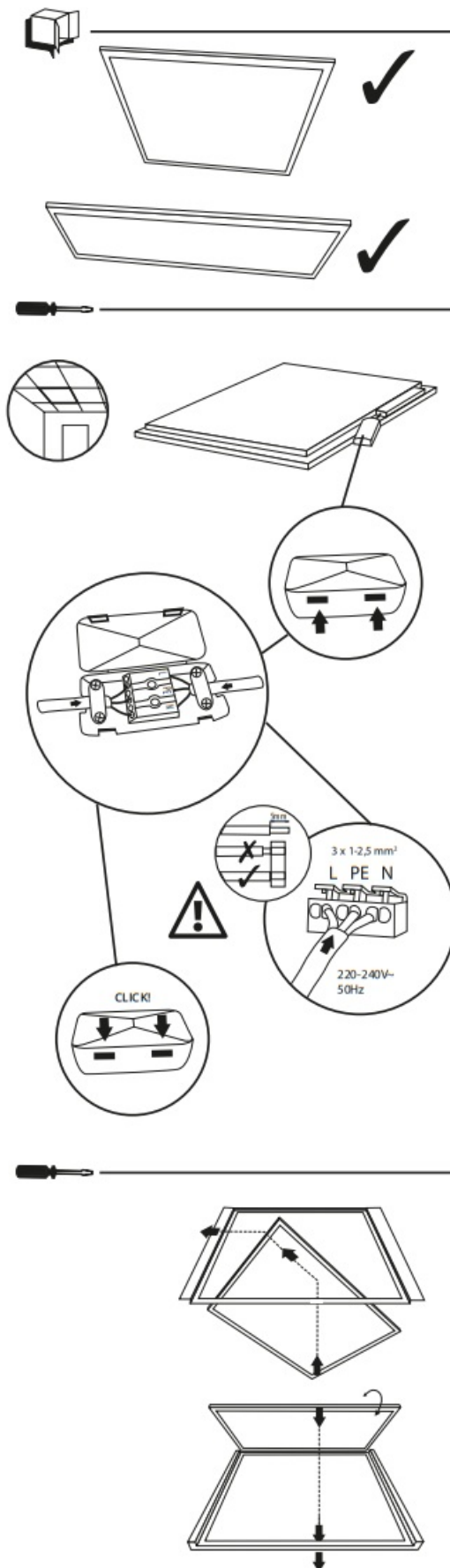
BAREV R Panel LED

P1 220-240V~ 50Hz	P2 36W	P3 3600lm	P4 4320lm LED light source	P5 50000h
-------------------------	-----------	--------------	----------------------------------	--------------

P6 CRI=80	P7 4000K ellipse ≤ 6x MacAdam	P8 Grounding symbol	P9 115°	P10 IP 20	P11 House icon
--------------	--	------------------------	------------	-----------------	-------------------

P12 0,5m	P13 RoHS symbol	P14 CE	P15 Recycling symbol	P16 EAC	P17 Warning symbol
-------------	--------------------	-----------	-------------------------	------------	-----------------------

P18 UK CA	P19 E	P20 LED symbol	P21 LED symbol	P22 Recycling symbol	P23 Recycling symbol
-----------------	----------	-------------------	-------------------	-------------------------	-------------------------



INTENDED USE / APPLICATION

Product for lighting office spaces and for general use.

MOUNTING

Technical changes reserved. Read the manual before mounting. Mounting should be performed by an appropriately qualified person. Any activities to be done with disconnected power supply. Exercise particular caution. Mounting diagram: see pictures. Check for proper mechanical fastening and connection to electrical power prior to first use. The product can be connected to a supply network which meets energy quality standards as prescribed by law. Product has a protective contact/terminal. Failure to connect the protective lead may lead to electric shock.

FUNCTIONAL CHARACTERISTICS

Product for indoor use.

USAGE GUIDELINES / MAINTENANCE

Replacing the light source in the housing is impossible. If the light source is damaged replace the entire housing. Any maintenance work must be performed when the power supply is cut off and the product has cooled down. Clean only with soft and dry cloths. Do not use chemical detergents. Do not cover the product. Ensure free air access. Product may heat up to a higher temperature.

ATTENTION! Do not look directly at LED light beam. Product can only be supplied by rated voltage or voltage within the range provided. Product must not be used in unfavourable environment, e.g. dust, moisture, water, vibrations, etc.

EXPLANATIONS OF SYMBOLS USED

P1: Rated voltage, frequency.

P2: Rated power.

P3: Rated luminous flux.

P4: Rated luminous flux. The specified luminous flux refers to the light source (LED module) used.

P5: Rated durability.

P6: Colour Rendering Index.

P7: Colour temperature.

P8: Class I. A product in which protection against electric shock is provided not only by means of basic insulation but also through additional safety measures, i.e. extra protective circuit to which protective conductor of the fixed feeding installation needs to be connected.

P9: Viewing angle.

P10: Protection against solid foreign objects bigger than 12mm provided.

P11: Use only indoors.

P12: The symbol describes the minimal distance of a light fixture (its light source) from the spots and objects that it's illuminating.

P13: The product is not compatible with lighting dimmers.

P14: Product meets the requirements of EU directives.

P15: The chipped globe, screen or protective shield must be replaced immediately.

P16: Certificate of Conformity confirming the quality of production in accordance with approved standards on the territory of the Customs Union.

P17: Caution, risk of electric shock.

P18: The product is compliant with all relevant United Kingdom regulations.

P19: This product is equipped with a light source with energy efficiency class E

P20: The LED light source can only be replaced by qualified personnel (Aprisa service only).

P21: Any control panel or control equipment can only be replaced by qualified personnel (Aprisa service only).

P22: The product meets the requirements of technical regulations applicable in Ukraine.

ENVIRONMENTAL PROTECTION

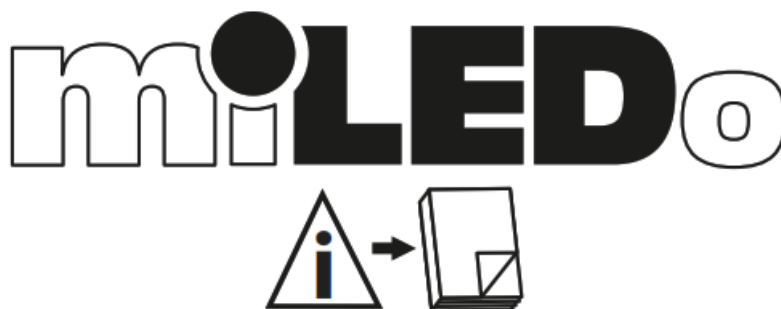
Keep your environment clean. Segregation of post-packaging waste is recommended.

P23: This labelling indicates the requirement to selectively collect waste electronic and electrical equipment. Products labelled in this way must not be disposed of in the same way as other waste under the threat of a fine. These products may be harmful to the natural environment and health, and require a special form of recycling/neutralising. Products labelled in this way should be returned to a collection facility for waste electrical and electronic goods. Information on collection centres is provided by local authorities or sellers of such goods.

Used items can also be returned to the seller when new product is purchased, in quantity no larger than the purchased item of the same type. The above rules regard the EU area. In the case of other countries, regulations in force in a given country must be applied. Contacting the distributor of our products in a given area is recommended.


COMMENTS / GUIDELINES

Failure to follow these instructions may result in e.g. fire, burns, electrical shock, physical injury and other material and non-material damage. For more information about Miledo products visit www.kanlux.com. Aprisa s.r.o. shall not be responsible for any damage resulting from the failure to follow these instructions. Aprisa s.r.o. reserves the right to make changes in the manual – the current version can be downloaded at www.kanlux.com.



Aprisa s.r.o., Sadová 618
738 01 Frýdek-Místek, Czech Republic

Documents / Resources

	miLEDo BAREV R Panel LED [pdf] Instruction Manual BAREV R Panel LED, BAREV R, Panel LED, LED
---	---

References

- [Kanlux - wiÄ™cej niÅ¼ ÅwiatÅ.o. - Kanlux](#)