



MikroTik RBcAPGi-5acD2nD Router and Wireless Instructions

[Home](#) » [Mikrotik](#) » MikroTik RBcAPGi-5acD2nD Router and Wireless Instructions 

Contents

- [1 MikroTik RBcAPGi-5acD2nD Router and Wireless](#)
- [2 PART LIST](#)
- [3 Wall: version 1](#)
- [4 Wall: version 2](#)
- [5 Ceiling](#)
- [6 Documents / Resources](#)
- [7 Related Posts](#)

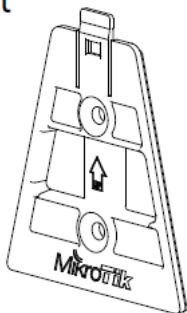


MikroTik RBcAPGi-5acD2nD Router and Wireless

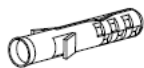


PART LIST

Part List



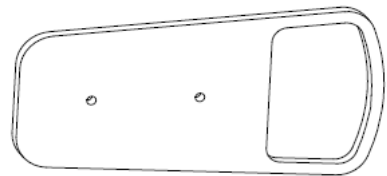
1x



2x

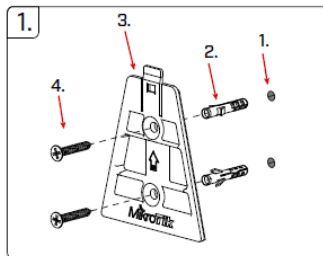


2x

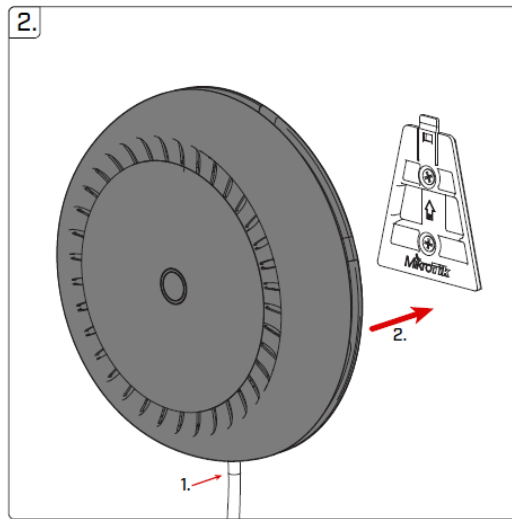


1x

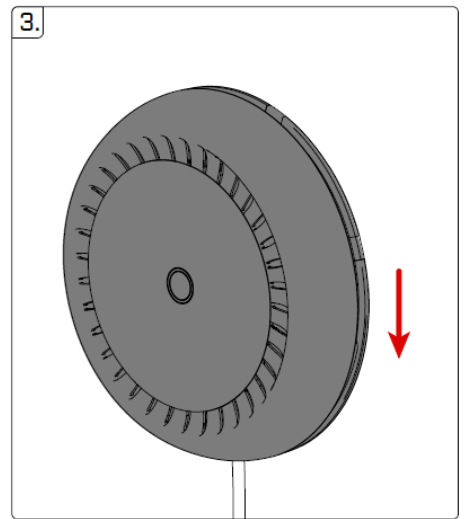
Wall: version 1



1. Drill two 4.5-5mm holes for anchors [1]. Insert plastic anchors into the holes [2]. Attach the mount [3] and secure the mount with screws [4].



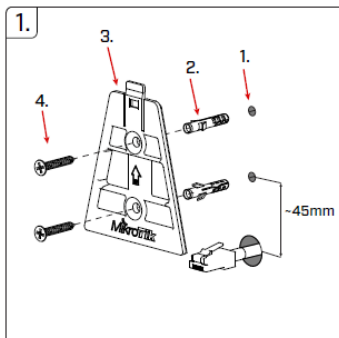
2. Connect ethernet cable with product, then attach product to the mount.



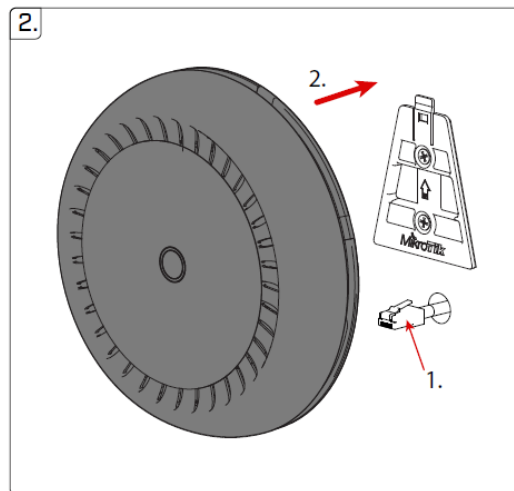
3. When the product is attached on the mount, pull it down until it snaps into place.

1. Drill two 4.5-5mm holes for anchors [1]. Insert plastic anchors into the holes [2]. Attach the mount [3] and secure the mount with screws [4].
2. Connect ethernet cable with product, then attach product to the mount.
3. When the product is attached on the mount, pull it down until it snaps into place.

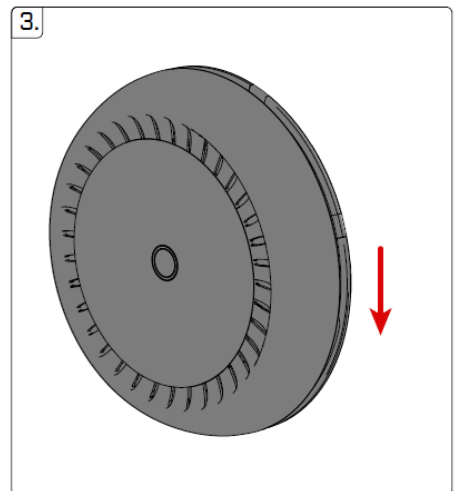
Wall: version 2



1. Drill two 4.5-5mm holes for anchors [1]. Insert plastic anchors into the holes [2]. Attach the mount [3] and secure the mount with screws [4].



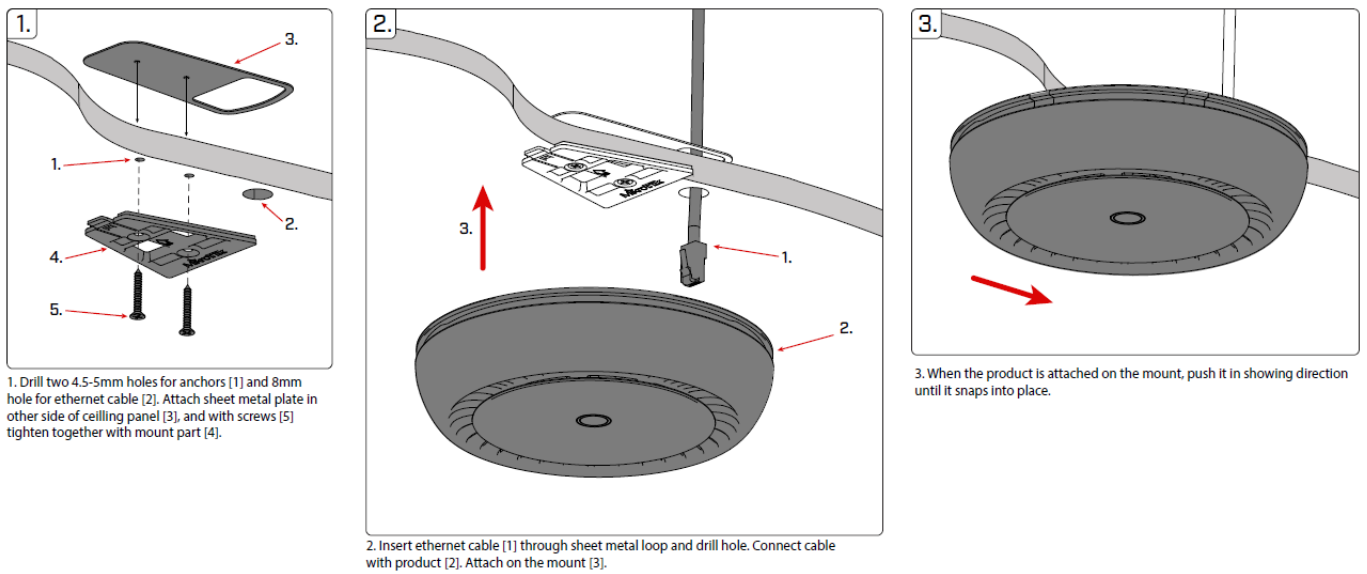
2. Connect ethernet cable [1] with product, then attach product to the mount.



3. When the product is attached on the mount, pull it down until it snaps into place.

1. Drill two 4.5-5mm holes for anchors [1]. Insert plastic anchors into the holes [2]. Attach the mount [3] and secure the mount with screws [4].
2. Connect ethernet cable [1] with product, then attach product to the mount.
3. When the product is attached on the mount, pull it down until it snaps into place.

Ceiling



1. Drill two 4.5-5mm holes for anchors [1] and 8mm hole for ethernet cable [2]. Attach sheet metal plate in other side of ceiling panel [3], and with screws [5] tighten together with mount part [4].
2. Insert ethernet cable [1] through sheet metal loop and drill hole. Connect cable with product [2]. Attach on the mount [3].
3. When the product is attached on the mount, push it in showing direction until it snaps into place.

Documents / Resources

| | |
|--|---|
| | <p>MikroTik RBcAPGi-5acD2nD Router and Wireless [pdf] Instructions RBcAPGi-5acD2nD, Router and Wireless</p> |
|--|---|