



## MikeWin SFL25W Smart LED Floor Lamp User Manual

[Home](#) » [MikeWin](#) » MikeWin SFL25W Smart LED Floor Lamp User Manual 

### SMART FLOOR LAMP user manual



#### Smart floor lamp user manual

Thank you for your choice. Please read the user manual carefully and keep it for future reference. Correct installation is required, please follow the instructions step by step. After installation, this smart floor lamp can be controlled by APP or a touch-sensitive button on the lamp.

## Contents

- [1 Specification](#)
- [2 Before Assembly](#)
- [3 Assembly Instruction](#)
- [4 Key Function](#)
- [5 WARNING](#)
- [6 Documents / Resources](#)
- [7 Related Posts](#)

## Specification

<b>Model</b>	<b>LDD-25W-C / LDD-25W-D</b>
<b>Wattage</b>	25W
<b>Dimension</b>	<b>Ø0.82x</b> 5.51 inch/22x1680mm
<b>Input Voltage</b>	100-240V AC,50/60Hz
<b>Color Temperature</b>	2700K-6500K
Max Luminous <b>Flus</b>	MAX. 2000 lm
<b>Beam Angle</b>	<b>160 deg</b>
Protection Rating	IP20
<b>Controlled By</b>	<b>Voice/ APP/ Touch</b>
<b>Color</b>	2700K-6500K White+ RGB
Material	<b>Plastic; Cast iron hardware</b>

## Before Assembly

1. Inspect the lamp before beginning assembly. Wire connections have been made at the factory and the lamp is

ready for assembly.

2. Remove all packing materials from the lamp.
3. To prevent bad connections, avoid pulling wiring connections when removing contents from the package or during installation.
4. Layout all the parts on a flat surface.
5. The floor lamp consists of seven parts: 1 x Lamp Head, 4 x Pole, 1 x Lamp Base, 1 x Electric Wire with Adapter (Refer to illustration).

## Assembly Instruction

1. Place the lamp base on a flat surface, then screw every two parts clockwise in order.

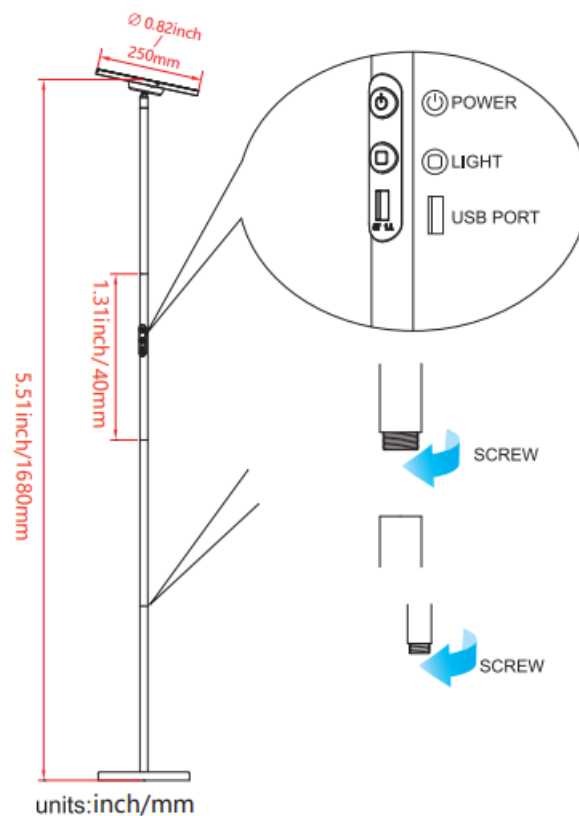
### Note:

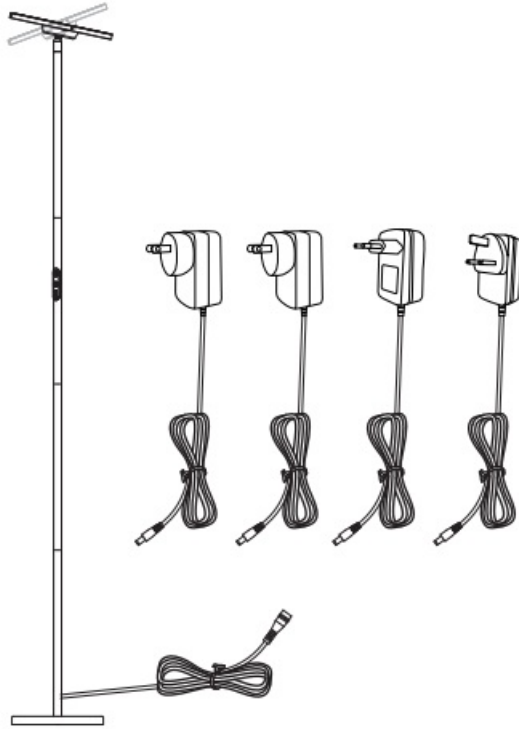
- Please take care not to pinch or damage the wires.
- For better installation, please tighten the bottom pole and lamp base firstly.
- Make sure each section of the tubes is tightened.

2. Plug the adapter into an outlet and now the lamp is ready for use.

## Adjustment

For best performance, please adjust the lamp position to directly above your area of reading/working.





### **PART One: Download the App**

**Step A:** Smart Life app installation Please choose either way below to download and install the app.

1. As per your phone system, choose the QR code to scan.



<https://itunes.apple.com/cn/app/smart-life-smart-living/id1115101477?l=en>

**ios**



<https://play.google.com/store/apps/details?id=com.tuya.smartlife>

**Android**

2. Search keyword 'Smart Life' in Apple Store or Google Play.

**Step B:** Create an account on Smart Life and log in. Note: Please keep your account and password in mind for

Alexa or Google Assistant App pairing later.

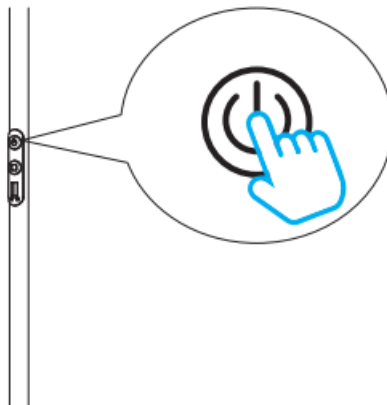
## Part Two: Pair the smart flood lamp to " Smart Life" App

### 1. TURN INTO PAIRING MODE (2 options )

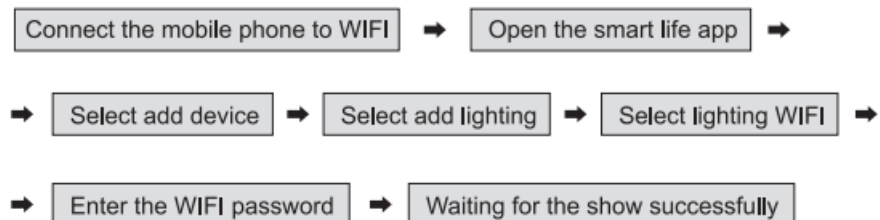
- Shod touch the Power button 66mes(ON/OFF/ONIOFF/ONTtOFF). me lam viii lash rapidly and then flash slowly Mimeo

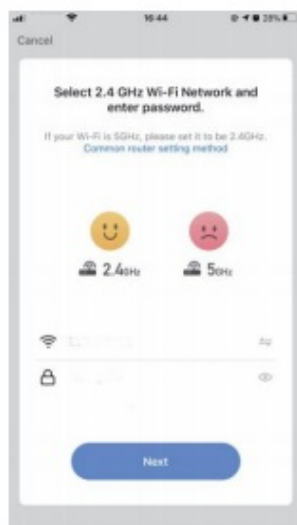
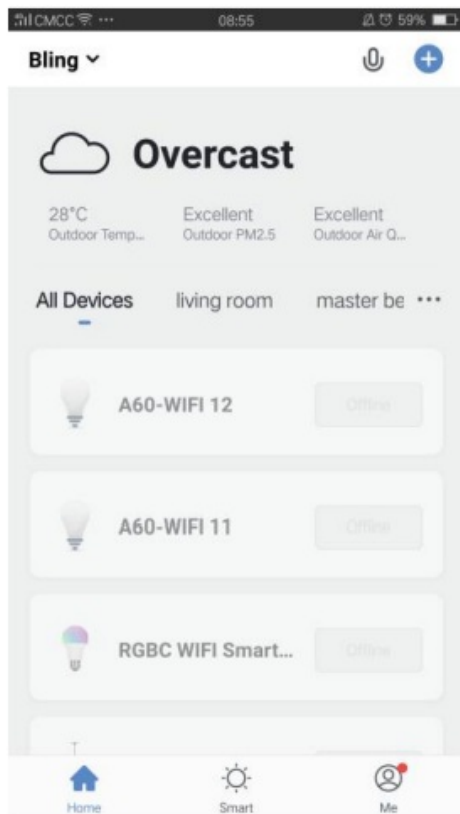


- Leap touch the Power button for 5 seconds the lamp will lash rapidly and then lash slowly Slimes.

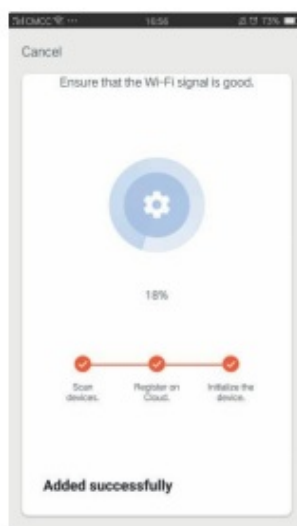


**NOTES:** the lamp sal aulcmalicaly dm, out pairing mode if no any mobile devices WOW& ed within 5minutes.





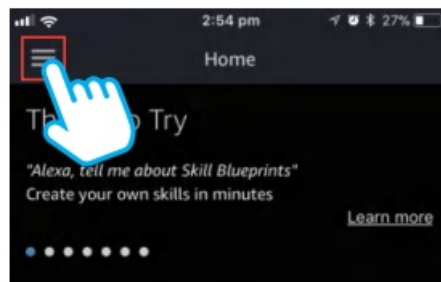
**Note: Do not select AP mode**



### Part Three – How to control the light with Amazon Alexa?

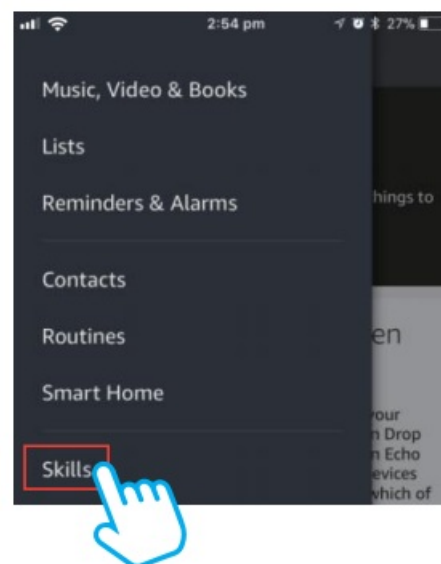
Please make sure that your Alexa app is connected to Echo. and both work well under your WiFi network.

**Step A:** Log in to your Alexa App, tap the top left corner, and tap 'skills'.

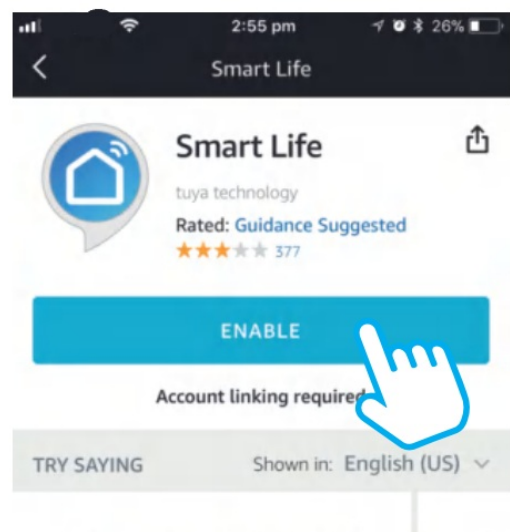
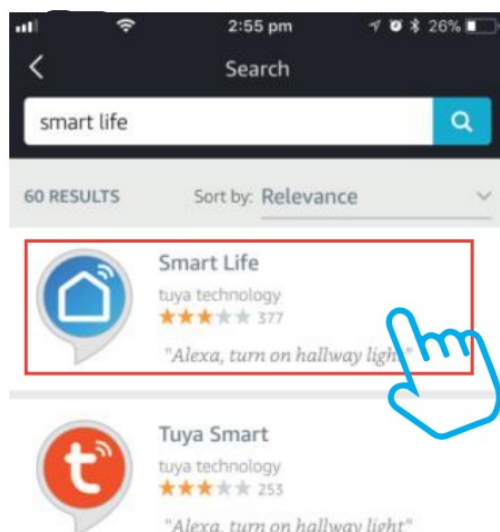


#### Your Alexa settings have been updated

Household Drop-In was enabled from one of your Echo devices or from the Alexa app. The opt-in Drop In feature lets you automatically connect to an Echo device for a voice or a video chat. Your Echo devices with a screen and the Alexa app will indicate which of

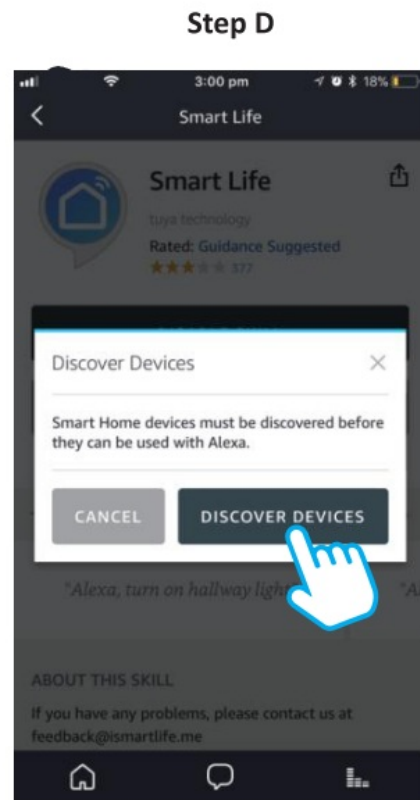


**Step B:** Type 'Smart Life', find 'Smart Life' from the search result, and tap it to enable the skill.



**Step C:** Enter your Smart Life App account and password. Tap 'Link Now', then tap 'Authorize' on the next page to bind the Smart Life account to Alexa.

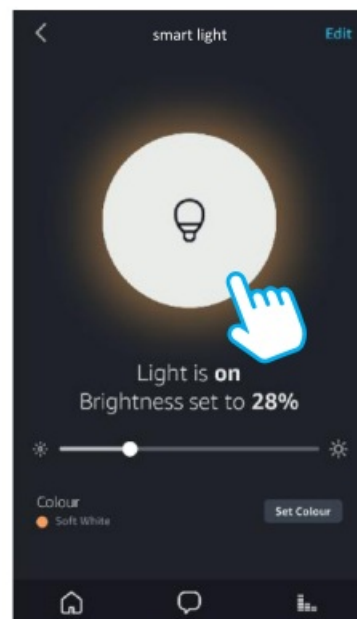
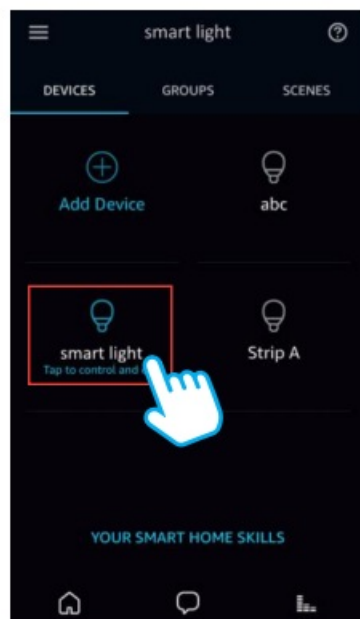
**Step D:** When your Smart Life account is bound to Alexa, tap 'DISCOVER DEVICES' to detect the light.



**Step E:** When the named light is paired to Alexa from Smart Life, it will show on the device page (see the 'smart light' example ).

**Step F:** Now you can control the light with Alexa App on the setting page. To turn on or off the light, simply tap the bulb icon.

**Step G:** You can also voice control the light with Alexa by giving these commands: "Alexa, turn on 'device name' ", "Alexa, set 'device name' to 'color' ", "Alexa, set 'device name' to 'number' ". The device name is the one you give to the light. The light is named 'smart light' in this user guide. For example, "Alexa, turn on 'smart light' ", "Alexa, set 'smart light' to 'blue' " etc.



**Note:** To control the light with Google Assistant, please continue to read Part Four.

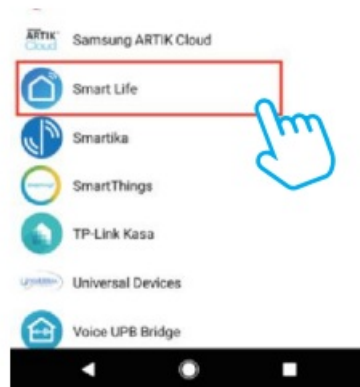
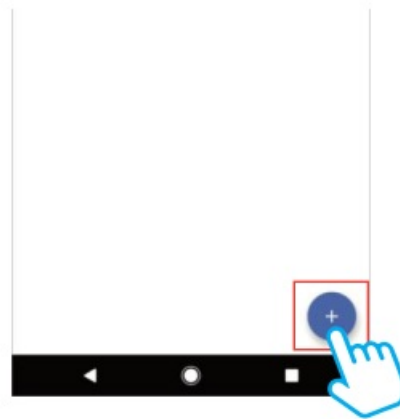
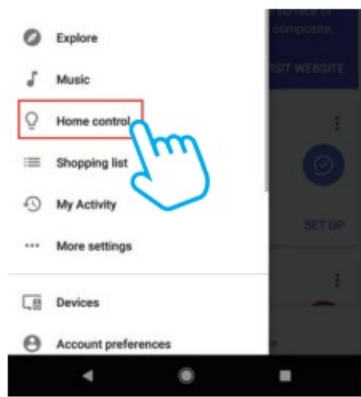
#### **Part Four – How to control the light with Google Assistant?**

**Step A:** Login to Google Assistant App, tap 'Home Control' on the left sidebar page.

**Step B:** Tap the '+' button on the bottom right to enter the next page.

**Step C:** Find 'Smart Life' from the sidebar list.



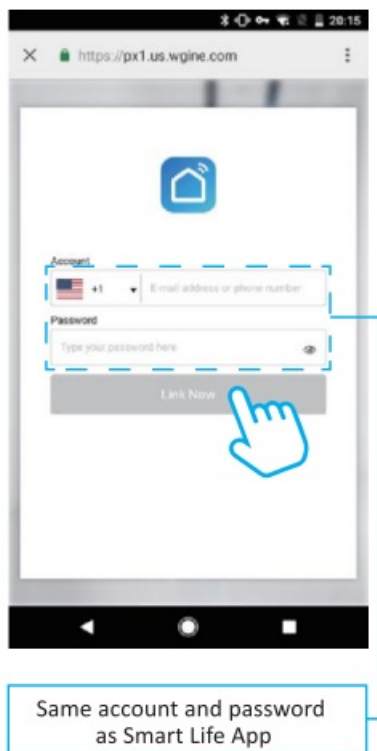


**Step D:** Enter your Smart Life App account and password to bind your Smart Life account to Google Assistant.

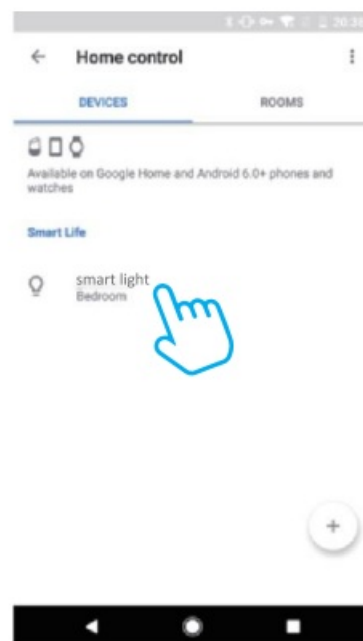
**Step E:** You will find the named light shown on the Home Control page. Now you can control the light on Google Assistant App, or voice control it by giving these commands: “ok Google, turn on ‘device name’ “, “ok Google, set ‘device name’ to ‘color’ “, “ok Google, set ‘device name’ to ‘number’ “.

Device name is the one you give to the light. The light is named ‘smart light’ in this user guide. For example, “ok Google, turn on ‘smart light’ “, “ok Google, set ‘smart light’ to ‘blue’ ” etc.

**Step D**



**Step E**



## Key Function



#### Power button

1. Short touch: Power ON or OFF 2. Long touch: Pairing.



#### Light button

1. Short touch to switch color 2. long touch to dim brightness.










Short press	Light	Brightness	Function
1	white	50%	long press 1s to adjust the brightness
2	warm	50%	
3	blue	50%	
4	green	50%	
5	red	50%	
6	pink	50%	
7	orange	50%	
8	purple	50%	
9	party	50%	
10	fade	50%	



#### 5V/1A provided by USB

Do not exceed the Max. output 5V/1A or it will cause the buttons out of work.

## WARNING

	Cut off the power before installation.
	Keep it away from flammables and fire sources.
	Replacing and cleaning to avoid electricity touched.
	Lamp is operated in a dimming circuit
	Keep it away from water
	Assemble the lamp according to the instructions and do not rebuild.
	Do not stare at the lamp for a long time.
	Assemble, take apart or move the lamp gently.
	Please do not cover anything on the lamp head and avoid bending and bumping the lamp pole.



Keep it away from children.

## Documents / Resources



[MikeWin SFL25W Smart LED Floor Lamp](#) [pdf] User Manual  
SFL25W, Smart LED Floor Lamp

Manuals+.