



MIGHTY MULE  
MMS100 Smart  
Gate Openers



# MIGHTY MULE MMS100 Smart Gate Openers Installation Guide

[Home](#) » [Mighty Mule](#) » MIGHTY MULE MMS100 Smart Gate Openers Installation Guide 

## Contents

- [1 MIGHTY MULE MMS100 Smart Gate Openers](#)
- [2 AT THE GATE – INSTALLING THE RADIO MODULE](#)
- [3 Nice G.O. Homeowner Smartphone App Installation](#)
- [4 LED Indication Lights and Status](#)
- [5 FCC & IC Notice](#)
- [6 Documents / Resources](#)
  - [6.1 References](#)



**MIGHTY MULE MMS100 Smart Gate Openers**



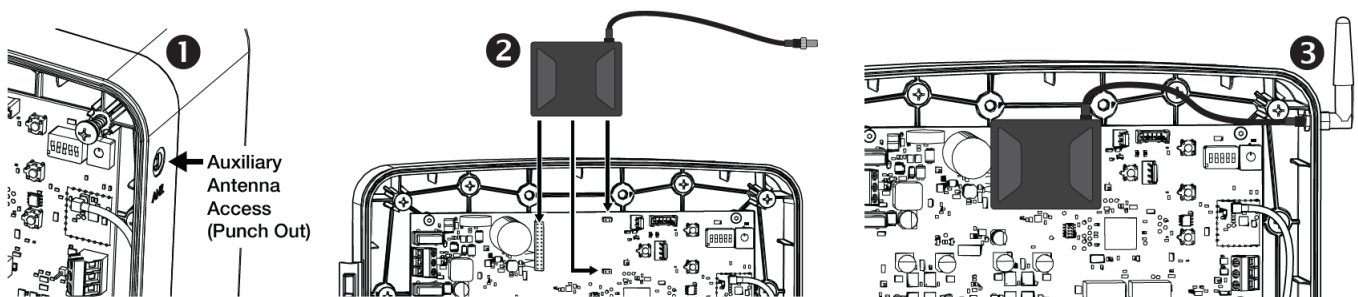
**NOTE:** Your Mighty Mule gate operator should be installed prior to setting up the MMS100 Wireless Connectivity System.

**NOTE:** MMS100 requires a 2.4 GHz WiFi Frequency. Most routers support this feature. Please consult your router's manual or manufacturer for confirmation.

## AT THE GATE – INSTALLING THE RADIO MODULE

Prior to any assembly of the MMS100, ensure that the Mighty Mule gate operator is turned OFF and disconnected from its power source.

1. If required, punch out the access hole for the Auxiliary Antenna.
2. Align the connectors, then plug in the small radio module into the operator control board.
3. Guide the radio module antenna cable through the Auxiliary Antenna hold, then twist and tighten the antenna pointing upward.



## Wi-Fi ROUTER – Setting Up and Provisioning The Bridge

1. Install/locate the bridge near your wireless router.

2. Connect the Antenna and plug in the Bridge.
3. Plug in the MMS100 receiver (only one gate operator can be connected to your Bridge).



## Nice G.O. Homeowner Smartphone App Installation

### Download, Register and Activate Application

Use a smartphone to visit the app store to download and install the Nice G.O. application. On initial use, you'll be asked to register and create their account. Once completed, sign in with the new account information (QR Code available below).

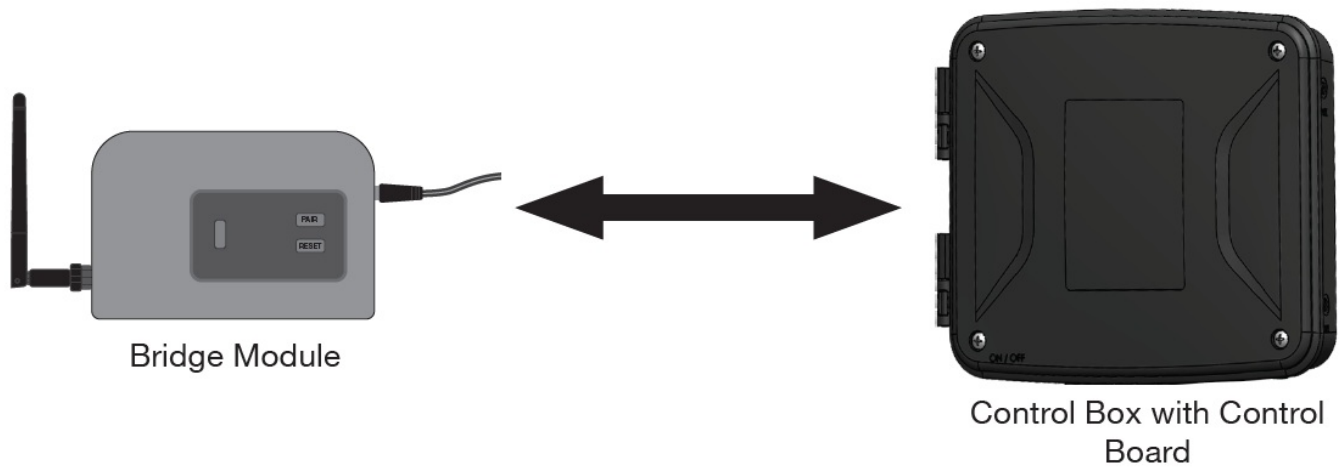
### Connect the Opener to the Nice G.O. app

Stand near Wi-Fi bridge. On your mobile device in the Nice G.O. app, tap the plus sign at the bottom right of screen to Connect Your Device. Follow directions in app to Connect Your Device.



Scan to download  
the app.

### Establishing Communication Between the Bridge and your Mighty Mule Gate Operator (with radio module installed)



**NOTE:** The radio module and the bridge module are paired at the factory. They will attempt to connect after the unit is provisioned.

### Establishing Communication Between the Bridge and Your Mighty Mule Gate Operator

1. Communication between the Control Board (with radio module) and Bridge Module will automatically attempt to connect.
2. The LED should be flashing blue as it attempts to connect to the Gate Operator.
3. Wait approximately 5 minutes.

### To Adjust the Power Level Settings

**IMPORTANT:** If you have a black MMS100 with a MM37x or MM57x Control board serial date code number below 220201XXXXXX, you may need to adjust the Power Level Settings on the control board by following the steps below.

**CAUTION:** Do not set the power level setting to “Medium” or “High” if your Bridge Module and the Radio Module are within 25 ft of each other.

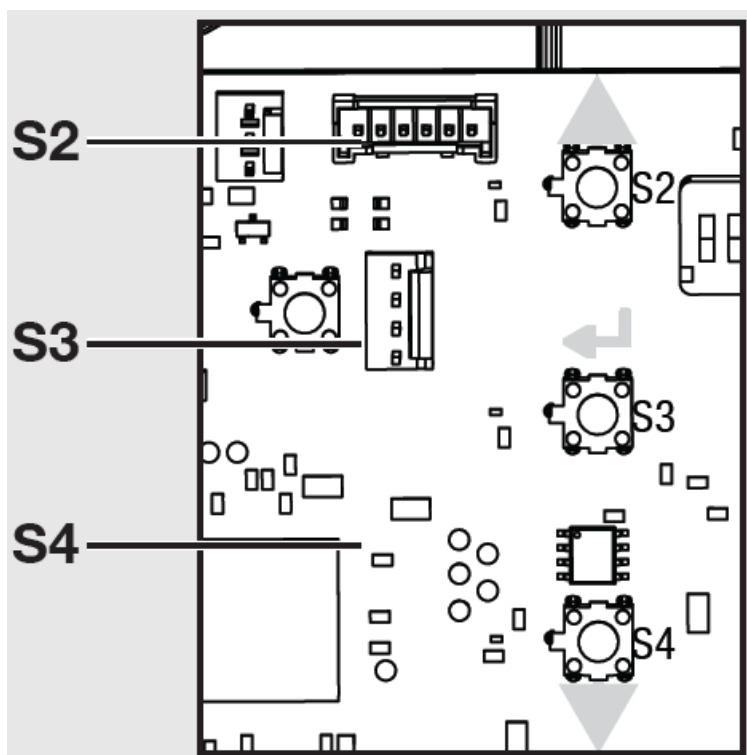
If the Bridge Module and Radio Module (Control Box) are far enough apart that a connection does not occur after 5 minutes of powering up the unit (the green LED on the Bridge Module does not turn solid), then the power level will need to be adjusted. The following steps will need to be taken:

**NOTE:** The power level will need to be adjusted on both the Control Board and the Bridge Module using the Nice G.O. App.

**NOTE:** Power settings in the app are only configurable for the black MMS100. The Grey MMS100 will auto-adjust the radio power settings.

1. Stand next to the gate operator control box.
2. Open the control box and adjust the power level.
  - a. Hold down S3 until you hear a second beep (about 10-15 seconds). A visual indication of the current power level setting will be given via the number of lit LEDs (1 for Low, 2 for Medium and 3 for High).
  - b. Adjust the power level up to Medium by pressing the S2 button.
    - i. S2 increases the power level setting.
    - ii. S4 decreases the power level setting.
  - c. Confirm the selected power level setting by holding down S3 for 1 second.
3. Adjust the power level for the Bridge using the Nice G.O. App.

- a. Go to the app Device Details page.
  - b. Click on the Power Level button (should currently be indicating Low).
  - c. Select Medium (which needs to align with the setting that was set on the control board).
4. Stand next to your Bridge Module, then wait up to 5 minutes to ensure that the LED on the Bridge Module turns solid green.
  5. If the LED on the Bridge Module does not turn green after 5 minutes, repeat steps 1-4 in order to change the power level to High.



## LED Indication Lights and Status

LED Indication Lights		Status
Color	State	
Green	Solid	Connected to router, server & AGO. Normal status.
Green	Flashing	Connected to router. Not connected to server.
Yellow	Flashing	Obtaining IP
Red	Solid	Offline. No access point.
Red	Slow Flash	Not connected to access point.
Red	Fast Flash	User initiated pairing via App.
Magenta	Flashing	Connecting and/or checking OTA.
Magenta	Solid	OTA in process.
Blue	Flashing	Connected to router & server. Not connected to AGO.

## FCC & IC Notice

We, Nice North America LLC of 5919 Sea Otter Place, Carlsbad, CA 92010, declare under our sole responsibility that the device, MMS100 complies with Part 15 of the FCC rules.

This device complies with Part 15 of the FCC Rules and Industry Canada license exempt standard(s). Operation is subject to the following two conditions:

- (1) This device may not cause harmful interference, and
- (2) This device must accept any interference received, including interference received that may cause undesired operation.

This Class B digital apparatus complies with Canadian ICES-003

This equipment has been tested and found to comply with the limits for a Class B digital device, pursuant to Part 15 of the FCC Rules. These limits are designed to provide reasonable protection against harmful interference in a residential installation.

This equipment generates, uses, and can radiate radio frequency energy and, if not installed and used in accordance with the instructions may cause harmful interference to radio communications. However, there is no guarantee that interference will not occur in a particular installation. If this equipment does cause harmful interference to radio or television reception, which can be determined by turning the equipment off and on, the user is encouraged to try to correct the interference by one or more of the following measures:

- Reorient or relocate the receiving antenna.
- Increase the separation between the equipment and receiver
- Connect the equipment into an outlet on a circuit different from that to which the receiver is connected
- Consult the dealer or an experienced radio/TV technician to help.

## **WARNING**

- Changes or modifications not expressly approved by the party responsible for compliance could void the user's authority to operate the equipment.
- Only use this equipment with the provided antenna, failure to do so will void the user's authority to operate the equipment.
- This system is for use the Mighty Mule Smart Capable Gate Operator (Model(s): MM371, MM372, MM571, MM572, TS571)
- A minimum separation distance of 20 cm (or possibly greater than 20 cm) between the antenna and nearby persons should be maintained.

Technical Service: [760-438-7000](tel:760-438-7000)


Monday – Friday, 5:00 a.m. – 4:00 p.m. PST / Saturday, 7:00 a.m. – 3:30 p.m. PST

For more information about the full line of Mighty Mule Automatic Gate Operators, Gate Openers and Access Controls visit [www.mightymule.com](http://www.mightymule.com)



[Niceforyou.com](http://Niceforyou.com)

©2024 Nice North America LLC. Mighty Mule is a registered trademark of Nice North America LLC. All rights reserved.

## **Documents / Resources**

	<p><b>MIGHTY MULE MMS100 Smart Gate Openers</b> [pdf] Installation Guide</p> <p>MMS100 Smart Gate Openers, MMS100, Smart Gate Openers, Gate Openers, Openers</p>
--	--

References

-  [Nice North America - Home Automation Systems](#)
-  [Find Smart Gate Opener Solutions - Automatic Electric Gate Openers – Mighty Mule](#)
- [User Manual](#)

[Manuals+](#), [Privacy Policy](#)

This website is an independent publication and is neither affiliated with nor endorsed by any of the trademark owners. The "Bluetooth®" word mark and logos are registered trademarks owned by Bluetooth SIG, Inc. The "Wi-Fi®" word mark and logos are registered trademarks owned by the Wi-Fi Alliance. Any use of these marks on this website does not imply any affiliation with or endorsement.