

MIGHTY MULE MMK200 Gate Keypad Wireless Access Control Instruction Manual

MIGHTY MULE MMK200 Gate Keypad Wireless Access Control Instruction Manual



Contents

- [1 Installation Instructions](#)
- [2 PROGRAM A KEYPAD CODE TO THE OPENER \(MODELS MM371, MM372, MM571, MM572\)](#)
- [3 DELETING A KEYPAD CODE \(MM271 OR MM272\)](#)
- [4 WALL MOUNTING](#)
- [5 CHANGING BATTERIES](#)
- [6 KEYPAD OPERATION](#)
- [7 MIGHTY MULE LIMITED WARRANTY](#)
- [8 Documents / Resources](#)
 - [8.1 References](#)
- [9 Related Posts](#)

Installation Instructions

OPERATION (FOR PROGRAMMING, PROCEED TO STEP 2)

This MMK200 Digital Keypad is designed for use with Mighty Mule automatic gate operators. The radio format provides unparalleled security with more than a million different codes.

To activate the automatic gate operator, the user enters their unique 1 to 6 digit long code on the unit's keypad and presses the () button.

For up to 30 seconds after the last activation, the keypad can be re-triggered by simply pressing the () button

again. This allows the user to stop or reverse the opener quickly, without having to re-enter their code.

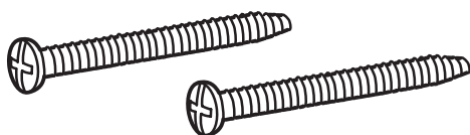
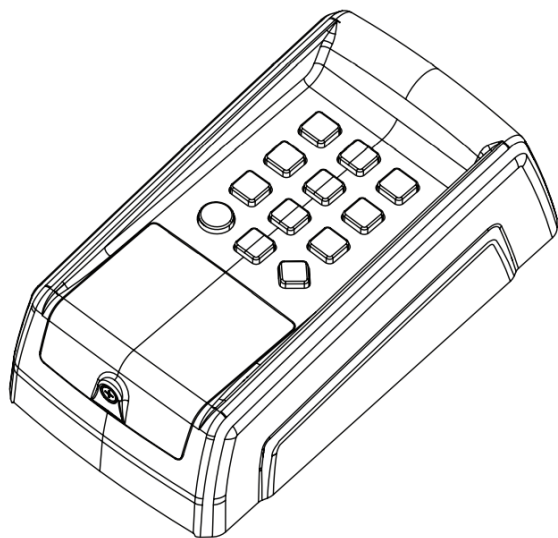
The keypad has built-in lighting for use at night or in dark areas. The clear silicone keys are backlit with a pleasing blue glow. Pressing any key will activate the backlight.

The Mighty Mule gate operator contains a built-in receiver that is programmed by sending a signal from the keypad. This stores the keypad's code into the receiver's memory. The receiver will retain its memory even without power and will only activate from the "memorized" keypad.

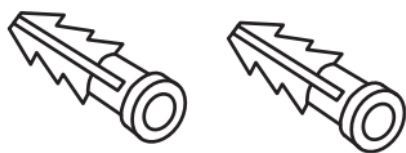
PACKAGE INCLUDES

3 AAA batteries included.

KEYPAD



MOUNTING SCREWS



SCREW ANCHORS

KEY FEATURES

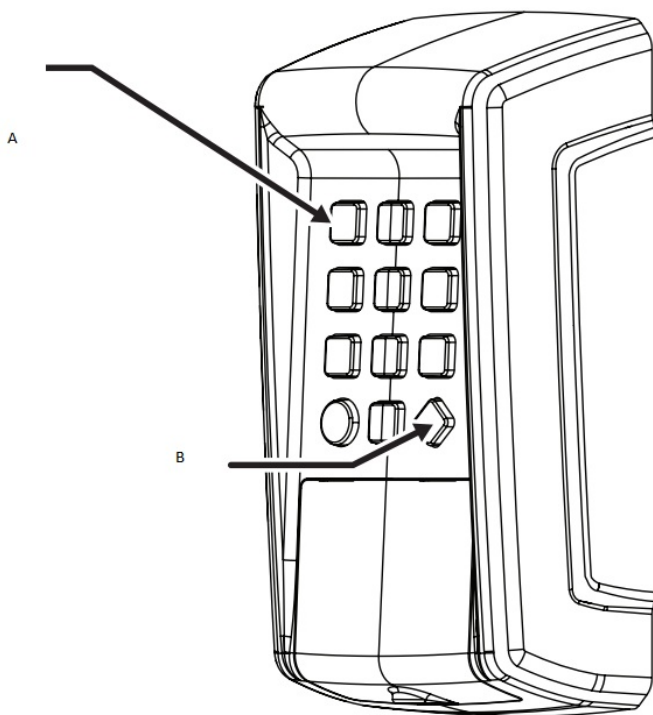
A : TEN KEYS FOR ENTERING

1-6 DIGIT KEYPAD CODES



USING NUMBERS OR LETTERS.

SOFT BLUE LIGHTS ILLUMINATE THE KEYS FOR NIGHTTIME USE.

B : THE KEY STAYS ACTIVE FOR 30 SECONDS AFTER A CODE IS USED SO THE OPENER CAN BE STOPPED OR REVERSED.



PROGRAM A KEYPAD CODE TO THE OPENER (MODELS MM371, MM372, MM571, MM572)

1. On the control board, press and hold the S3 button () until LED2 [beside the S3 button] illuminates and the buzzer sounds. Release the (S3) button ()
2. While the LED2 button is lit, enter a 1-6 digit code into the key pad. Then PRESS and HOLD the keypad's




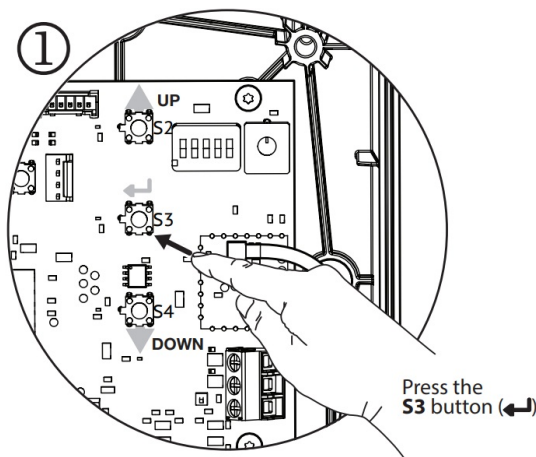
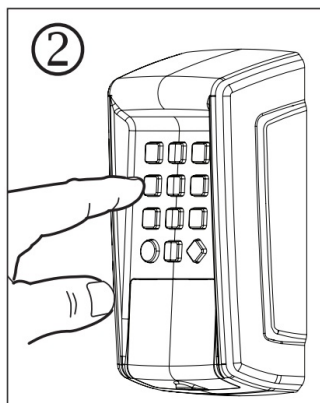
key until the opener

BEEPS and the light BLINKS once. Repeat Steps 1 & 2 for any additional keypad codes.

DELETE A KEYPAD CODE: Follow Steps 1 and 2 (above) to delete (overwrite) an existing keypad code.

PROGRAMMING A KEYPAD CODE (MM271 OR MM272)

1. Use the ON/OFF switch on the opener control box to power the system off.
2. Enter the desired 1-6 digit code into the keypad. **PRESS** and **HOLD** the  key, and continue to hold until instructed to release.



3. While still holding the  key, use the ON/OFF switch on the control box to power the system ON.

4. After the startup beep, there will be a silence for 5-10 seconds, followed by an uninterrupted beep.

5. Release the  key after the beep.

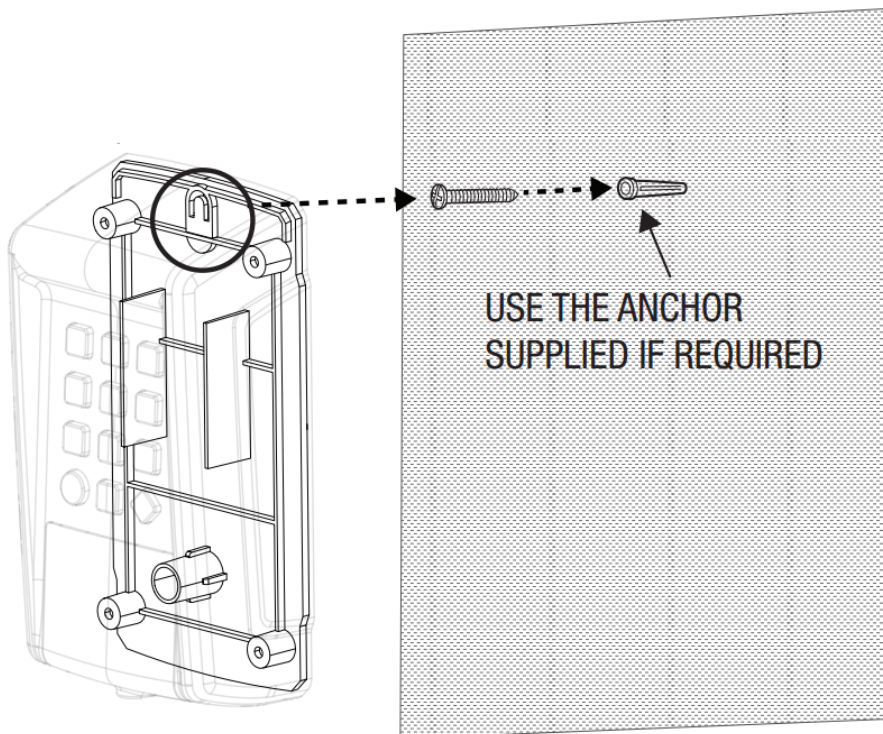
DELETING A KEYPAD CODE (MM271 OR MM272)

Follow Steps 1 through 5 to delete the keypad code.

Note: If using the MM271, the gate must be in the closed position to delete an existing keypad code. It can be open or closed to program a new code.

WALL MOUNTING

1. DRIVE THE PROVIDED SCREW INTO THE MOUNTING SURFACE (NOT ALL THE WAY).



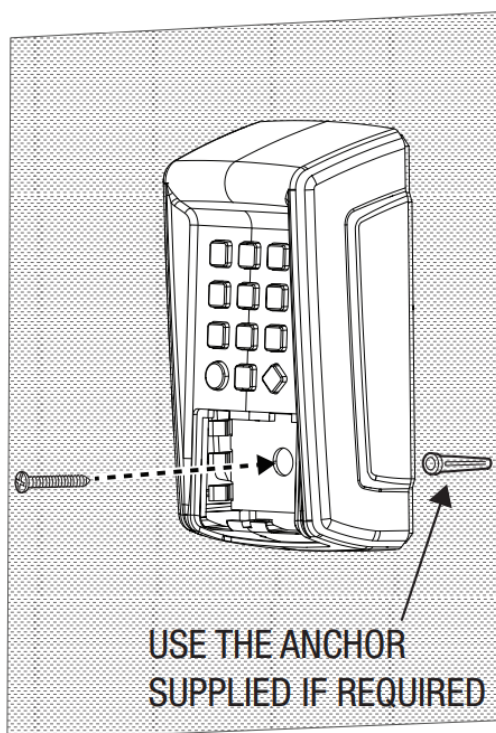
2. ALIGN THE SCREW WITH U-SHAPED SLOT ON THE BACK OF THE UNIT, INSERT AND SLIDE DOWNWARD UNTIL SECURE.

ADJUST THE SCREW DEPTH IF NEEDED.

3. REMOVE THE BATTERY ASSEMBLY TO ACCESS THE SECOND MOUNTING HOLE (SEE **CHANGING BATTERIES**, BELOW).

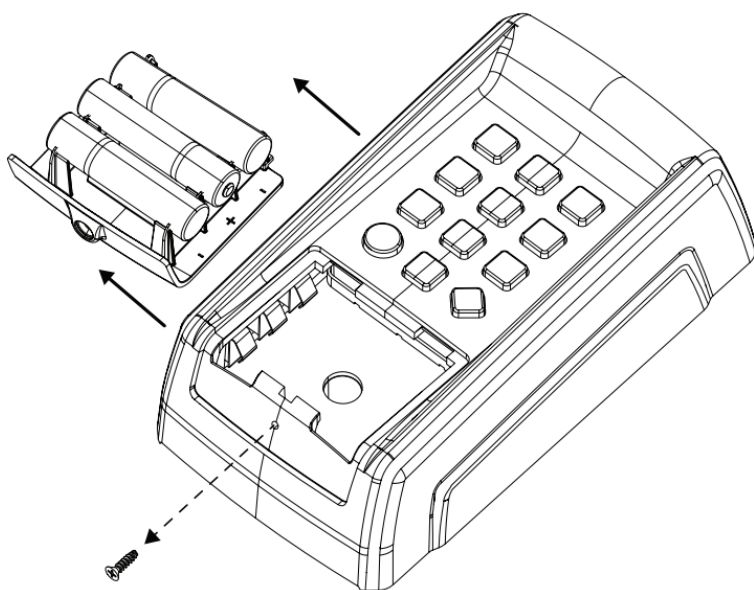
ALIGN THE SCREW WITH THE MOUNTING HOLE AND TIGHTEN.

REPLACE THE BATTERY ASSEMBLY

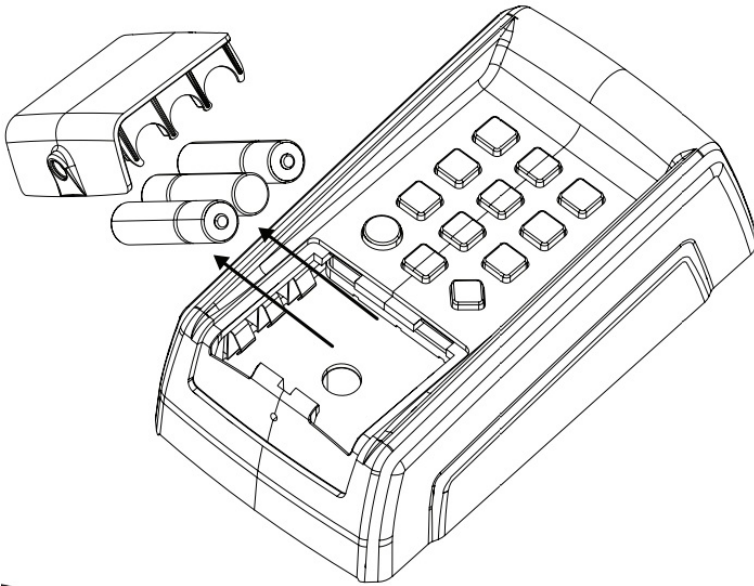


CHANGING BATTERIES

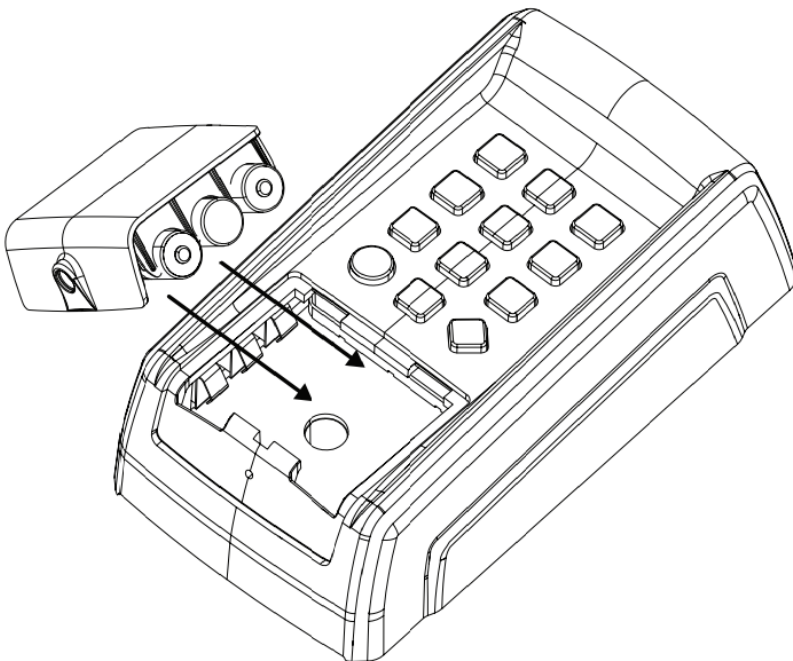
1. REMOVE ONE SCREW THEN REMOVE THE BATTERY CRADLE.



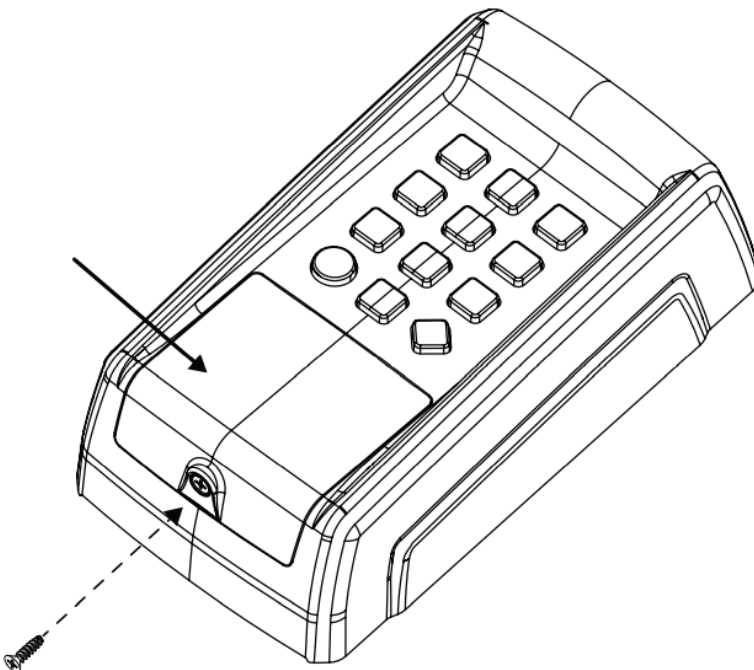
2. REMOVE THE OLD BATTERIES FROM THE CRADLE, AND DISPOSE OF THEM PROPERLY.



3. INSTALL 3 FRESH AAA BATTERIES INTO THE CRADLE.



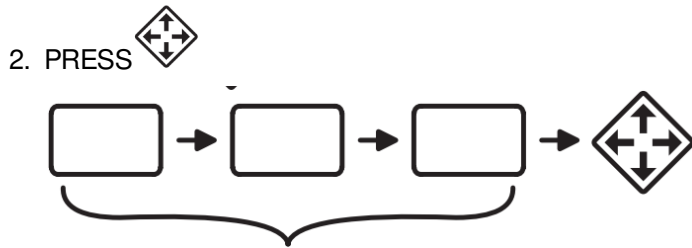
4. REPLACE BATTERY CRADLE AND SECURE THE SCREW.



KEYPAD OPERATION


DAYTIME OPERATION

1. ENTER THE KEYPAD CODE

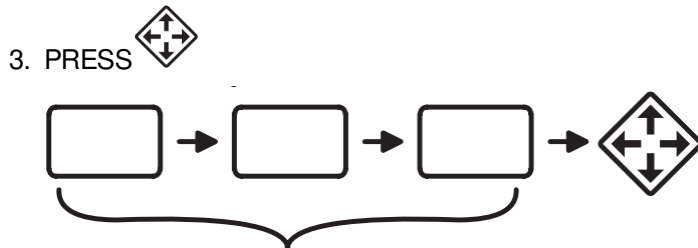


1-6 DIGIT KEYPAD CODE THAT WAS PROGRAMMED INTO THE OPENER

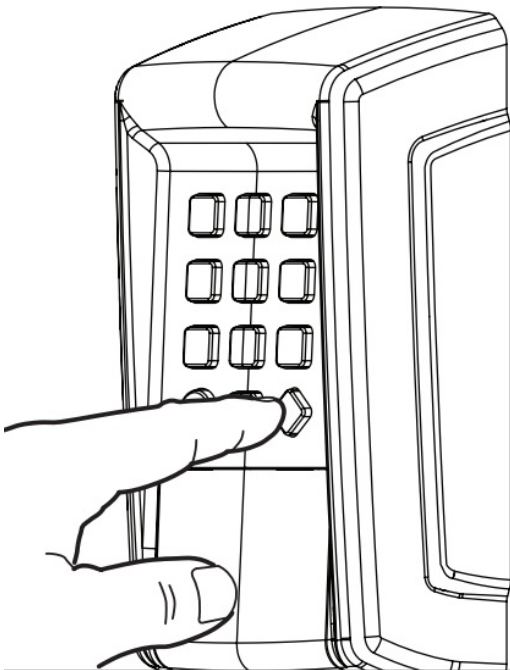
NIGHTTIME OPERATION

1. PRESS THE LIGHT () BUTTON (TO LIGHT KEYPAD)

2. ENTER THE KEYPAD CODE



1-6 DIGIT KEYPAD CODE THAT WAS PROGRAMMED INTO THE OPENER



WARNING: Changes, modifications or adjustments not expressly approved by Nice North America could void the user's authority to operate this equipment. There Are No User Serviceable Parts.

NOTICE: This device complies with Part 15 of the FCC Rules. Operation is subject to the following two conditions: (1) This device may not cause harmful interference, and (2) this device must accept any interference received, including interference that may cause undesired operation.

This device complies with Industry Canada License-exempt RSS standards.

Operation is subject to the following two conditions: (1) this device may not cause harmful interference, and (2) this device must accept any interference, including interference that may cause undesired operation of the device.



WARNING

KEEP BATTERIES OUT REACH OF CHILDREN. Swallowing batteries can lead to serious injury or death. If you suspect someone has swallowed a battery, go to the hospital immediately. Do not induce vomiting or eat or drink anything.

For more information, call the National Battery Ingestion **Hotline:** 202- 625-3333.

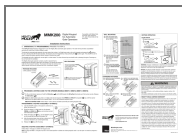
The battery identification number for this product is AAA Alkaline (LR03).

MIGHTY MULE LIMITED WARRANTY

This product is warranted to the original consumer ("You") by Nice North America against defects in material and workmanship for a period of twelve (12) months from the date of purchase. This limited warranty only extends to you if the item was purchased directly from Nice North America or through an authorized sales partner. Nice North America will, at its option, either repair or replace any product that it confirms is defective and eligible for service under this warranty and will return the repaired or replaced product to you at Nice North America's cost. This warranty does not apply to damage to the product from negligence, abuse, abnormal usage, misuse, accidents, acts of god, normal wear and tear, failure to follow the manufacturer's instructions, or arising from improper installation, storage or maintenance. Some states do not allow the exclusion or limitation of incidental and consequential damages, so the above limitation or exclusion may not apply. This warranty gives you specific legal rights and you may also have other rights, which vary from state to state. In order to be protected by this warranty, a copy of the receipt or other valid proof of purchase must be provided with any product that is being repaired or replaced under this warranty. In order to initiate warranty service for your product, please contact Tech Services at (800) 421-1587 for a Return Authorization Number ("RA") and other important details.



Documents / Resources



[MIGHTY MULE MMK200 Gate Keypad Wireless Access Control](#) [pdf] Instruction Manual
271, 272, 371W, 372W, 571W, 572W, MMK200 Gate Keypad Wireless Access Control, MMK200, Gate Keypad Wireless Access Control, Keypad Wireless Access Control, Wireless Access Control, Access Control

References

- [User Manual](#)

[Manuals+](#), [Privacy Policy](#)

This website is an independent publication and is neither affiliated with nor endorsed by any of the trademark owners. The "Bluetooth®" word mark and logos are registered trademarks owned by Bluetooth SIG, Inc. The "Wi-Fi®" word mark and logos are registered trademarks owned by the Wi-Fi Alliance. Any use of these marks on this website does not imply any affiliation with or endorsement.