

MIGHTY MULE MM371 Keychain Transmitter



# MIGHTY MULE MM371 Keychain Transmitter User Guide

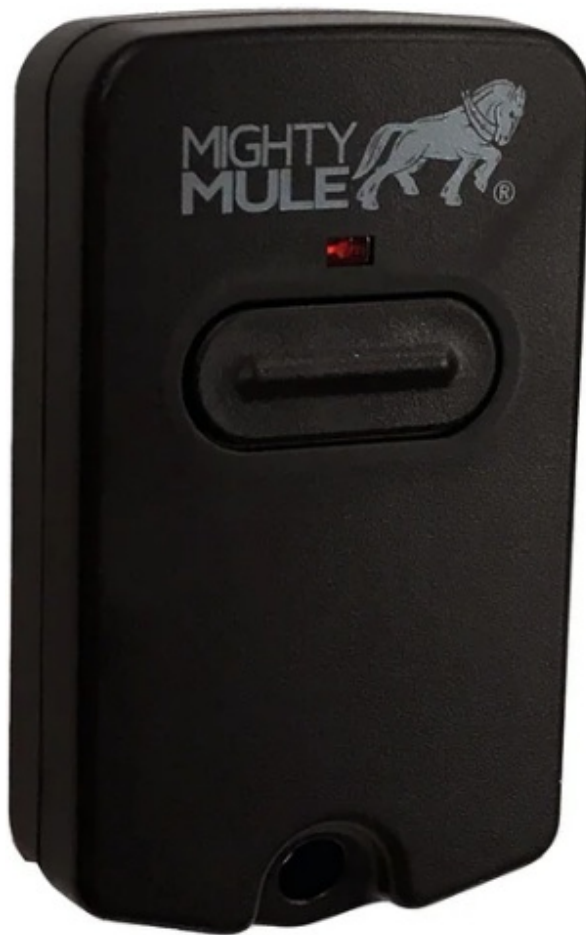
[Home](#) » [Mighty Mule](#) » MIGHTY MULE MM371 Keychain Transmitter User Guide 

## Contents

- [1 MIGHTY MULE MM371 Keychain Transmitter](#)
- [2 Product Information](#)
- [3 Product Usage Instructions](#)
- [4 FAQ](#)
- [5 Instructions](#)
- [6 Instructions for adding additional entry transmitter\(s\)](#)
- [7 FCC STATEMENT](#)
- [8 MIGHTY MULE LIMITED WARRANTY](#)
- [9 CONTACT](#)
- [10 Documents / Resources](#)
  - [10.1 References](#)



**MIGHTY MULE MM371 Keychain Transmitter**



## Product Information

### Specifications

- **Model:** FM134 & FM135
- **Type:** Entry Transmitters
- **FM134:** Two Button Entry Transmitter
- **FM135:** Single Button Entry Transmitter

### Product Usage Instructions

#### Programming FM134 and FM135 Remote to Mighty Mule MM371, MM372, MM571, or MM572 Automatic Gate Openers

1. Press and hold the gate opener's S3 button until you hear a beep.
2. Press and hold the desired button on the remote until you hear a beep to complete the programming process.

#### Programming FM134 and FM135 Remote to Mighty Mule MM271 or MM272 Automatic Gate Openers

1. Remove the back cover of the opener remote.
2. Use a small screwdriver to move switches to random positions.
3. Adjust the dip switch pattern to match the already programmed remote if programming subsequent remotes.
4. Replace and secure the back cover of the opener remote.
5. Power off the control box and press and hold a transmitter button while sliding the ON/OFF switch to the ON

position. Hold for 8-10 seconds until you hear beeps indicating programming completion.

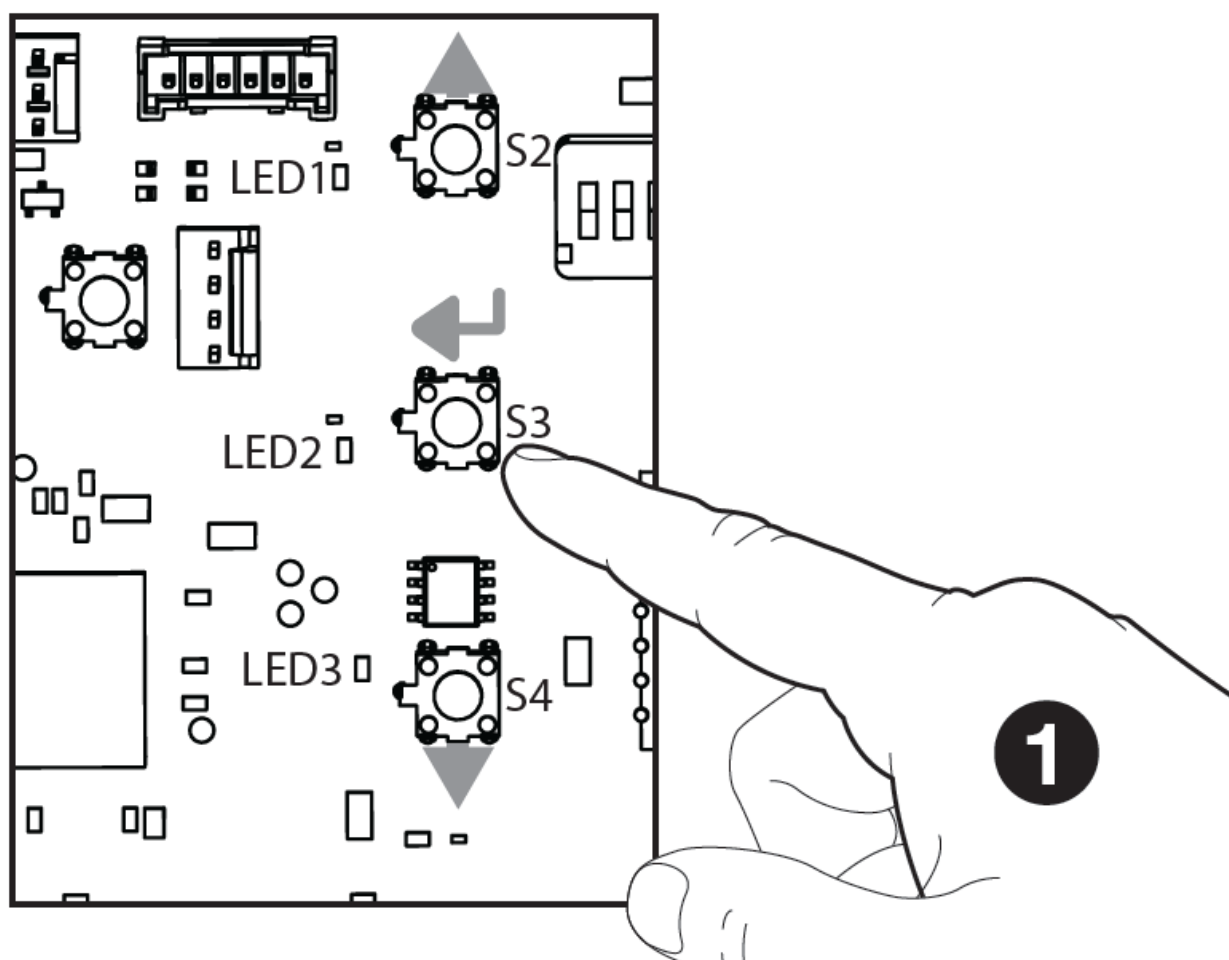
## FAQ

- How do I program additional entry transmitters?
- If adding a button transmitter, set the DIP switches to match the original transmitter. If matching a two-button transmitter to a single-button transmitter, follow the provided steps to adjust the DIP switches accordingly.
- How many transmitters can be programmed?
- An infinite number of transmitters may be programmed by adjusting the dip switch pattern to match the already programmed remote.
- How can I ensure an accessory is not unintentionally erased during programming?
- Test the accessory before programming to prevent unintentional erasure as there is no indication that the accessory has been programmed or erased.

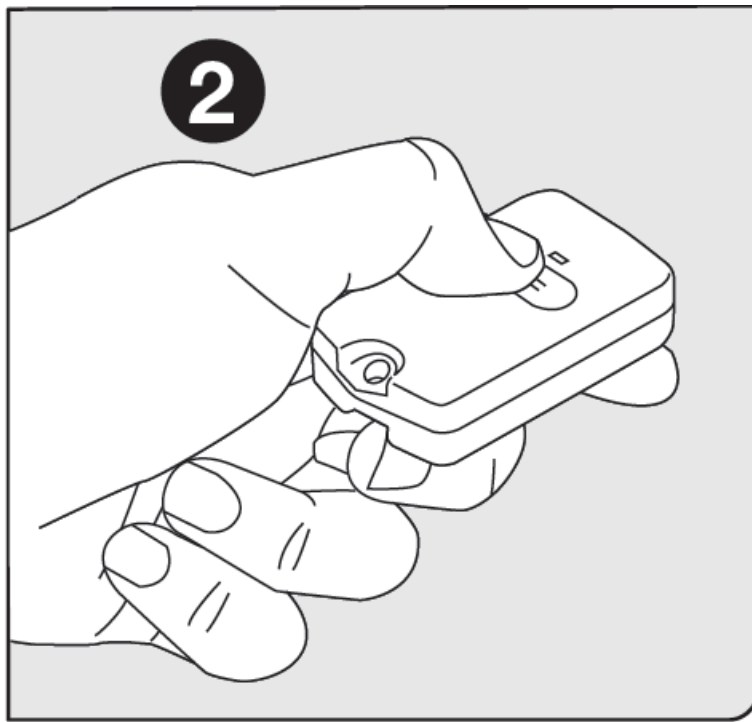
## Instructions

### Programming the FM134 and FM135 Remote to Mighty Mule MM371, MM372, MM571 or MM572 Automatic Gate Openers

1. Press and hold the 2 gate opener's S3 button (  ) located on the control board until you hear a beep.



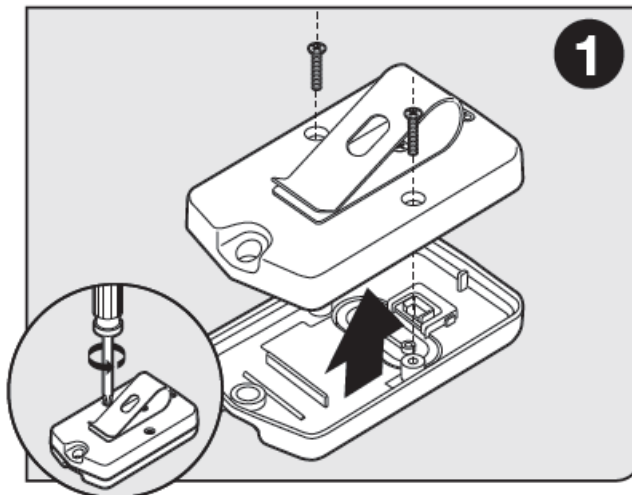
2. Press and hold the desired button on the remote (until you hear a beep) to complete the programming process.  
The remote is now programmed to the gate opener.



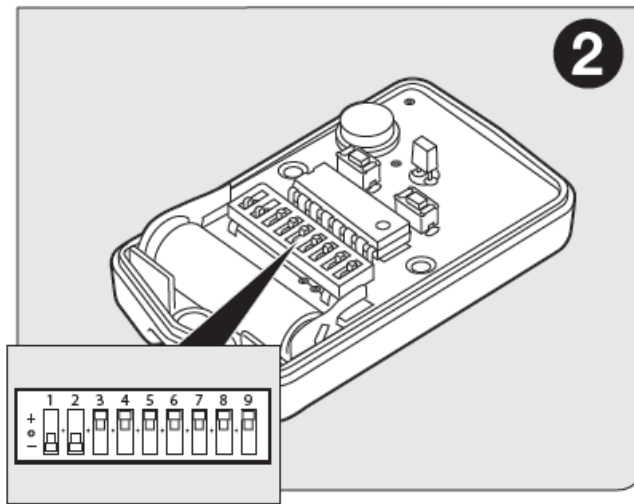
**NOTE:** To program any subsequent FM134 or FM135 remotes after the first, simply adjust the dip switch pattern to match the already programmed remote.  
An infinite number of transmitters may be programmed in this manner.

#### **Programming the FM134 and FM135 Remote to Mighty Mule MM271 or MM272 Automatic Gate Openers**

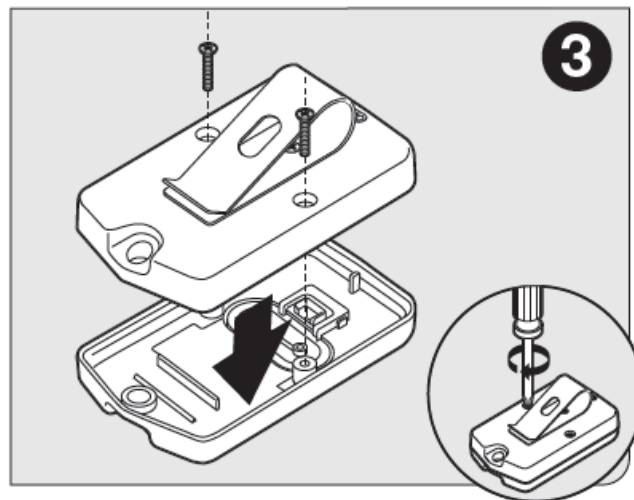
1. Remove the back cover of the opener remote.



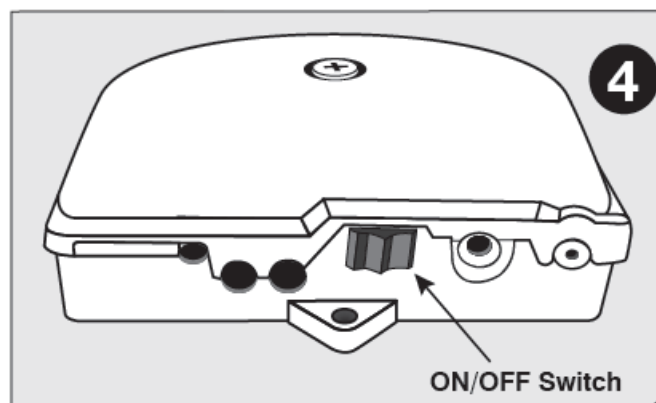
2. Use a small screwdriver to move switches to random positions. If you have more than one transmitter, set them all with the same code.



3. Replace and secure the back cover of the opener remote.



4. Power off the control box. Press and hold a transmitter button while sliding the ON/OFF switch to the ON position. Continue to hold the selected transmitter button for 8-10 seconds. You will hear a single or a series of beeps, followed by a pause then a single beep. Release transmitter's button. Your code is now programmed to that button.



**NOTE:** To program any subsequent FM134 or FM135 remotes after the first, simply adjust the dip switch pattern to match the already programmed remote.

An infinite number of transmitters may be programmed in this manner.

**NOTE:** The process for programming any wireless accessory in the same process as erasing that accessory. There is no indication that the accessory has been programmed or erased. Make sure to test the accessory before programming, because you may unintentionally erase it.

## **FM134 Two Button Entry Transmitter**

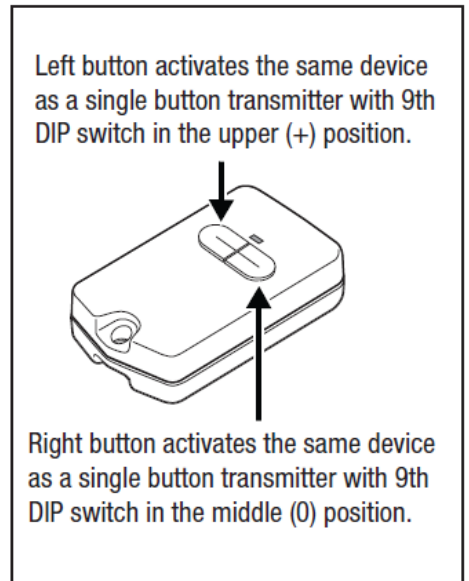
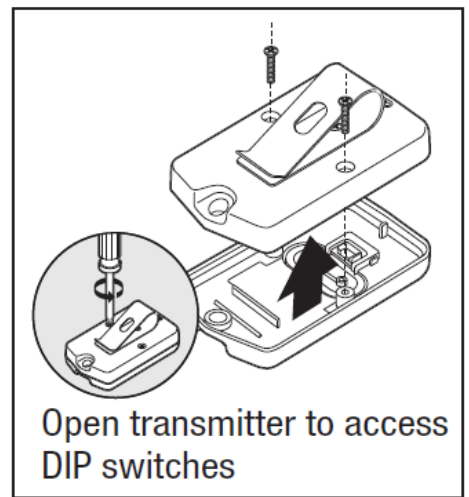
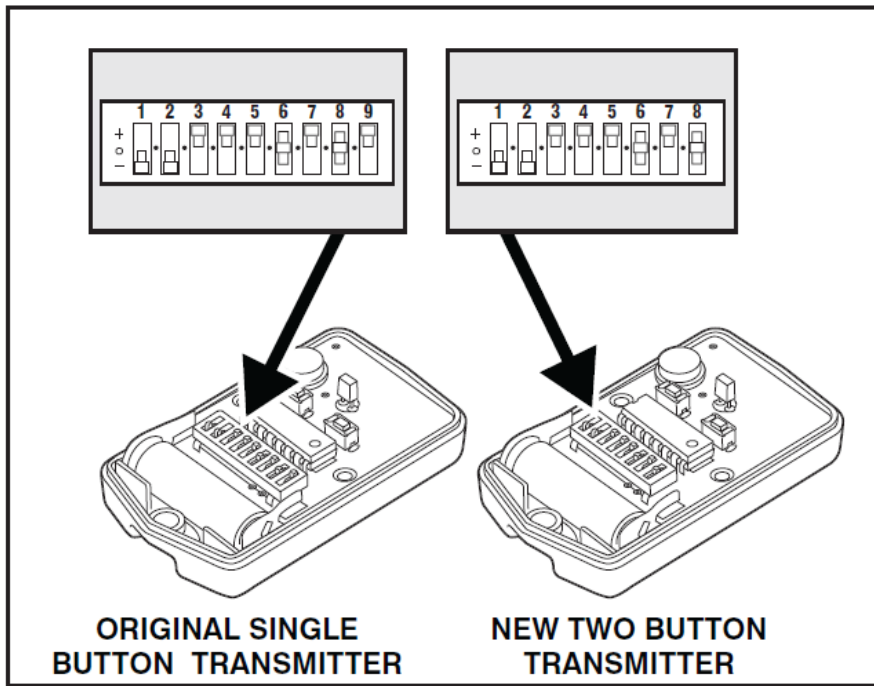
The two-button transmitter is used for the remote control of two gate openers or a gate opener and a garage door opener. A Universal Receiver (RB709U-NB) is required for use with garage door openers.

### **Instructions for adding additional entry transmitter(s)**

- If you already have a Two Button transmitter that operates your gates and are simply adding an additional
- Two Button transmitters, set the DIP switches in the new transmitter to match the DIP switches in your original transmitter, reassemble the transmitters and you are done.

### **If you are matching your two-button transmitter to a single-button transmitter follow these steps**

1. Match the eight DIP switches found in the dual-button transmitter to the first eight DIP switches in the single-button transmitter.
2. The ninth DIP switch on the single button transmitter cannot be in the lowest position (-); it must be changed to the upper (+) or middle (0) position at this time.
3. If the ninth DIP switch is set to the upper position (+) the left-hand button will be used to send the same code when using the dual-button remote.
4. If the ninth DIP switch is set to the middle position (0) the right-hand button will be used to send the same code when using the dual-button remote.
5. If you change the ninth DIP switch in the original transmitter refer to Program New Transmitter Setting to Gate Opener's Memory section below.

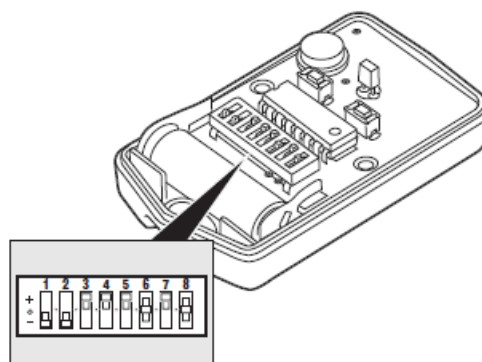


### Instructions for replacing a lost entry transmitter

- If you are replacing a lost transmitter and you know or have your original transmitter's DIP switch setting written down, set the new transmitter DIP switches to that setting and it is ready to activate your gate opener.
- If you don't know the DIP switch setting from your original transmitter, you will need to select a new setting.

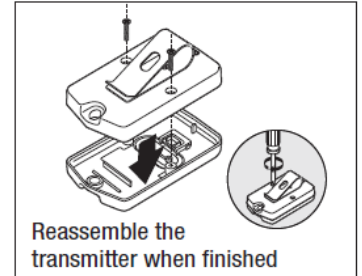
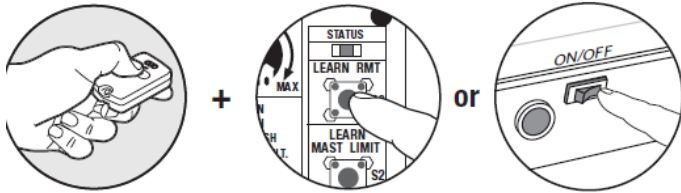
### Personalize your Transmitter Setting

- There are eight (8) DIP switches, each of which can be placed in three different positions (+,0,-). DO NOT set all switches in the same position, such as all +, all -, or all zeros.



## Program New Transmitter Setting to Gate Opener's Memory

- Some gate openers are programmed with a LEARN REMOTE or LEARN TRANSMITTER button and some with the ON/OFF switch.
- See page 4 for transmitter programming instructions for Mighty Mule MM271, MM272, MM371, MM372, MM571 or MM572 Automatic Gate Openers.



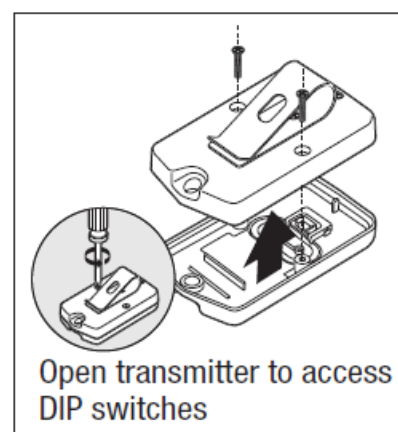
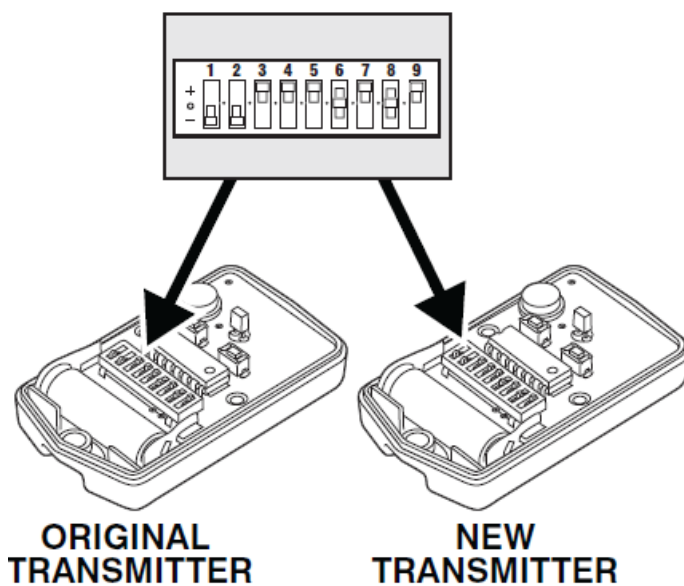
**NOTE:** If the red light on the transmitter is dim or flickers when the transmitter button is pushed, the transmitter battery may be weak. Replace when necessary with a A23S 12 Volt battery.

## FM135 Single Button Entry Transmitter

- You can have as many transmitters as you want for family and guests to open your gate. The DIP switches in all the transmitters for a particular gate opener must be set the same.

### Instructions for adding additional entry transmitter(s)

- If you already have a transmitter that operates your gate and are simply adding a transmitter, set the DIP switches in the new transmitter to match the DIP switches in your original transmitter, reassemble the transmitters and you are done.



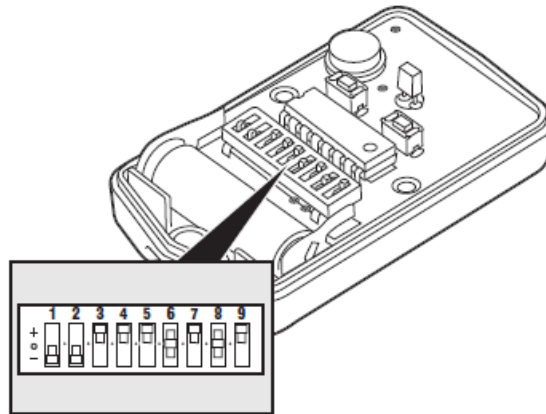
### IMPORTANT

If you change the DIP switches in the original transmitter refer to Program New Transmitter Setting to Gate Opener's Memory section below.



## Instructions for replacing a lost entry transmitter

- If you are replacing a lost transmitter and you know or have your original transmitter's DIP switch setting written down, set the new transmitter DIP switches to that setting and it is ready to activate your gate opener.
- If you don't know the DIP switch setting from your original transmitter, you will need to select a new setting.

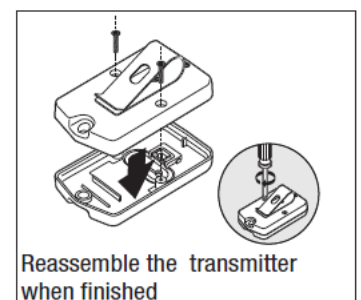
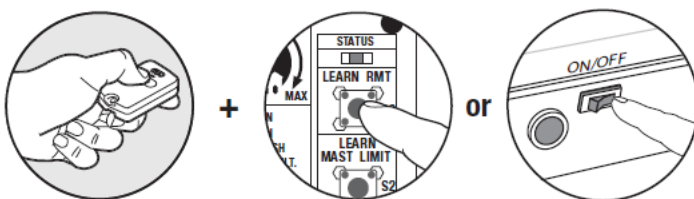


## Personalize your Transmitter Setting

- There are nine (9) DIP switches, each of which can be placed in three different positions (+,0,-). DO NOT set all switches in the same position, such as all +, all -, or all zeros.

## Program New Transmitter Setting to Gate Opener's Memory

- Some gate openers are programmed with a LEARN REMOTE or LEARN TRANSMITTER button and some with the ON/OFF switch.
- See page 4 for transmitter programming instructions for Mighty Mule MM271, MM272, MM371, MM372, MM571 or MM572 Automatic Gate Openers.



**NOTE:** If the red light on the transmitter is dim or flickers when the transmitter button is pushed, the transmitter battery may be weak. Replace when necessary with an A23S 12 Volt battery.

## FCC STATEMENT

**FCC WARNING:** Changes or modifications to this unit not expressly approved by the party responsible for compliance could void the user's authority to operate the equipment.

**NOTICE:** This device complies with part 15 of the FCC rules and with Industry Canada license-exempt RSS standard(s). Operation is subject to the following two conditions:

1. this device may not cause interference, and
2. this device must accept any interference, including interference that may cause undesired operation of the device.

However, there is no guarantee that interference will not occur in particular installations. If this equipment does cause harmful interference to radio or television reception, which can be determined by turning the equipment off and on, the user is encouraged to try to correct the interference by one or more of the following measures:

- Reorient or replace the receiver antenna.
- Increase the separation between the equipment and the receiver.
- Connect the equipment to an outlet on a circuit different from that to which the receiver is connected.
- Consult the dealer or an experienced radio/TV technician for help.

## **MIGHTY MULE LIMITED WARRANTY**

This product is warranted to the original consumer ("You") by Nice North America against defects in material and workmanship for twelve (12) months from the date of purchase. This limited warranty only extends to you if the item was purchased directly from Nice North America or through an authorized sales partner. Nice North America will, at its option, either repair or replace any product that it confirms is defective and eligible for service under this warranty and will return the repaired or replaced product to you at Nice North America's cost. This warranty does not apply to damage to the product from negligence, abuse, abnormal usage, misuse, accidents, acts of god, normal wear and tear, failure to follow the manufacturer's instructions, or arising from improper installation, storage or maintenance. Some states do not allow the exclusion or limitation of incidental and consequential damages, so the above limitation or exclusion may not apply. This warranty gives you specific legal rights and you may also have other rights, which vary from state to state. To be protected by this warranty, a copy of the receipt or other valid proof of purchase must be provided with any product that is being repaired or replaced under this warranty. To initiate warranty service for your product, please contact Tech Services at (800) 421-1587 for a Return Authorization Number ("RA") and other important details.

## **CONTACT**

- Mighty Mule Sales & Technical Service: 800-421-1587
- For more information about the full line of Mighty Mule Automatic Gate
- Operators, Gate Openers and Access Controls visit
- [www.mightymule.com](http://www.mightymule.com).
- [Niceforyou.com](http://Niceforyou.com).

©2023 Nice North America LLC. Mighty Mule is a registered trademark of Nice North America LLC. All rights reserved.



## [MIGHTY MULE MM371 Keychain Transmitter](#) [pdf] User Guide

MM371, MM372, MM571, MM572, MM271, MM272, MM371 Keychain Transmitter, MM371, Keychain Transmitter, Transmitter

## References

- [User Manual](#)

[Manuals+](#), [Privacy Policy](#)

This website is an independent publication and is neither affiliated with nor endorsed by any of the trademark owners. The "Bluetooth®" word mark and logos are registered trademarks owned by Bluetooth SIG, Inc. The "Wi-Fi®" word mark and logos are registered trademarks owned by the Wi-Fi Alliance. Any use of these marks on this website does not imply any affiliation with or endorsement.