

MIGATRONIC
MIG-A-Twist Smart
Torch Module



MIGATRONIC MIG-A-Twist Smart Torch Module User Manual

[Home](#) » [Migatron](#) » MIGATRONIC MIG-A-Twist Smart Torch Module User Manual 

Contents

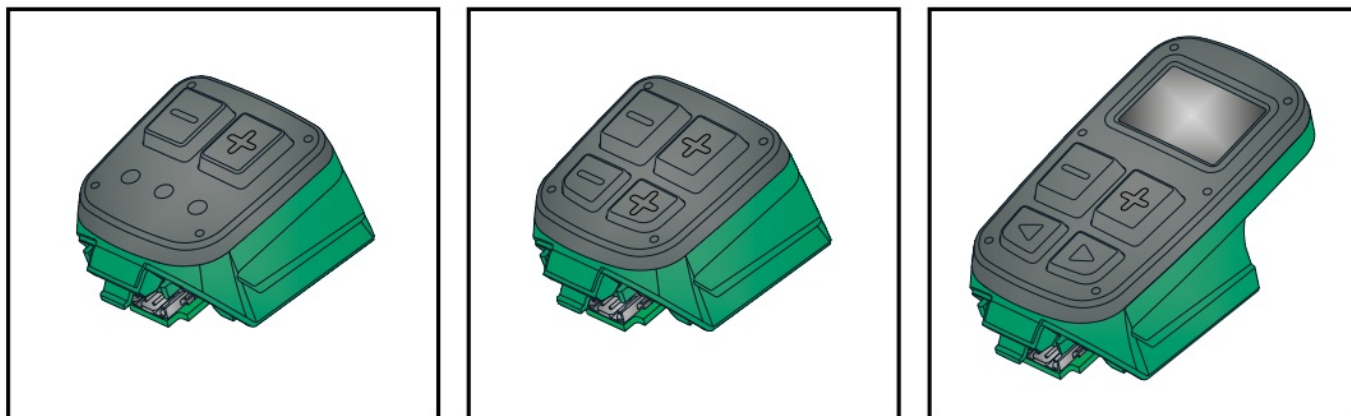
- 1 MIGATRONIC MIG-A-Twist Smart Torch Module
- 2 OVERVIEW
- 3 HOW TO USE
- 4 Selection of functions GRAPHICAL
- 5 MigaJOB
- 6 Selection of job
- 7 Specifications
- 8 FAQs
- 9 Documents / Resources
 - 9.1 References

MIGATRONIC

MIGATRONIC MIG-A-Twist Smart Torch Module

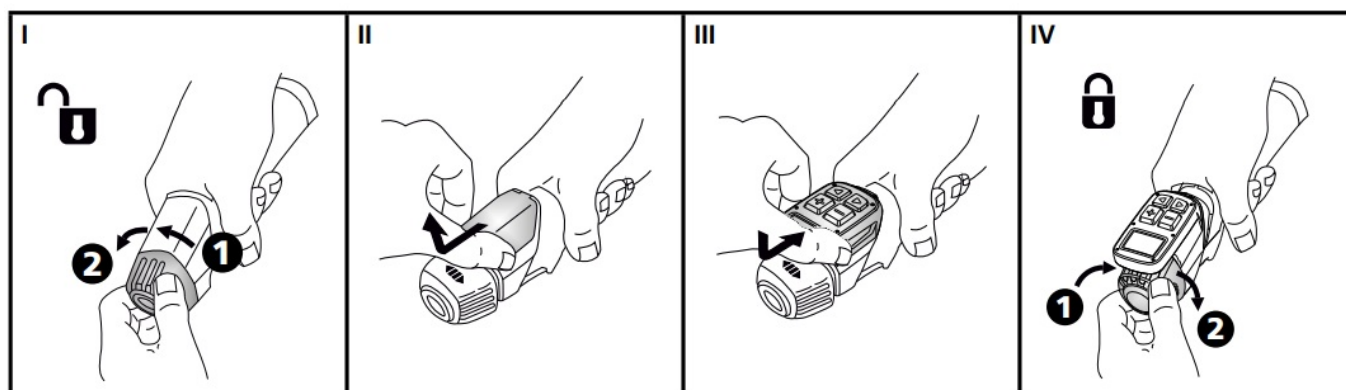


OVERVIEW



- Smart Torch module with 2 buttons (80100432)
- Smart Torch module with 4 buttons (80100431)
- Graphical Smart Torch module with 4 buttons (80100430)

HOW TO USE



Note:

- Smart Torch modules are only compatible with Sigma Select/One/Core and/or
- Automig 300 Pulse power sources equipped with wire feeder PCB 71613664 version C1 and later. For earlier versions – please contact your Migatron Service Partner.
- Software package 4.0 must be installed in the machine.
- Software can be downloaded from <http://migatron.com>

BASIC / GRAPHICAL Manual MIG/MAG

Welding current



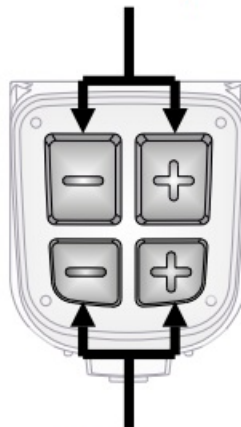
GRAPHICAL Synergic MIG/MAG

Welding current



BASIC Manual MIG/MAG

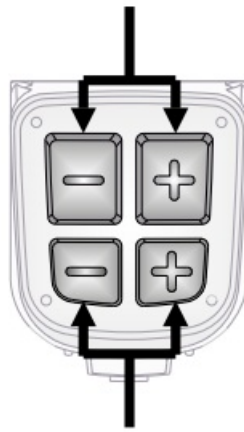
Wire feed speed




Voltage

GRAPHICAL Manual MIG/MAG

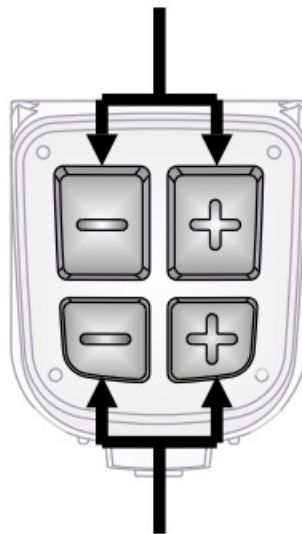
Wire feed speed




Function

- a. Voltage (default)
- b. Arc-adjust
- c. Sequence 
- d. Disabled

Welding current

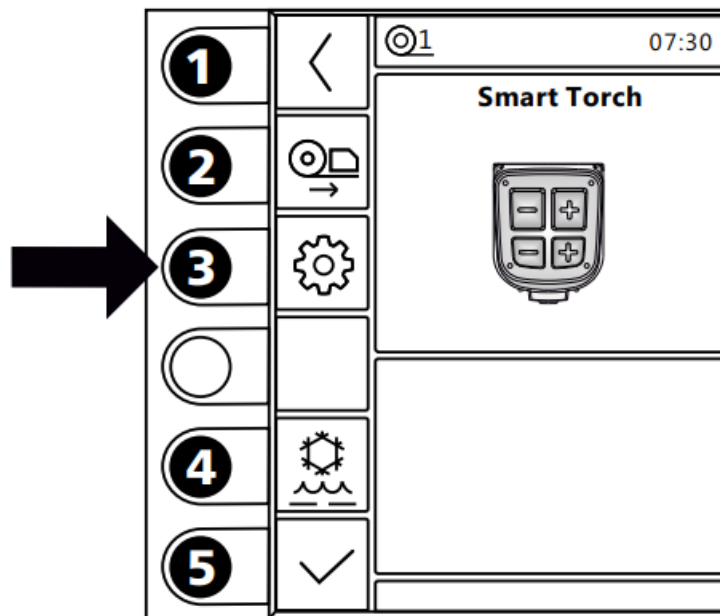


Function

- a. Voltage trim (default)
- b. Arc-adjust
- c. Sequence 
- d. Disabled

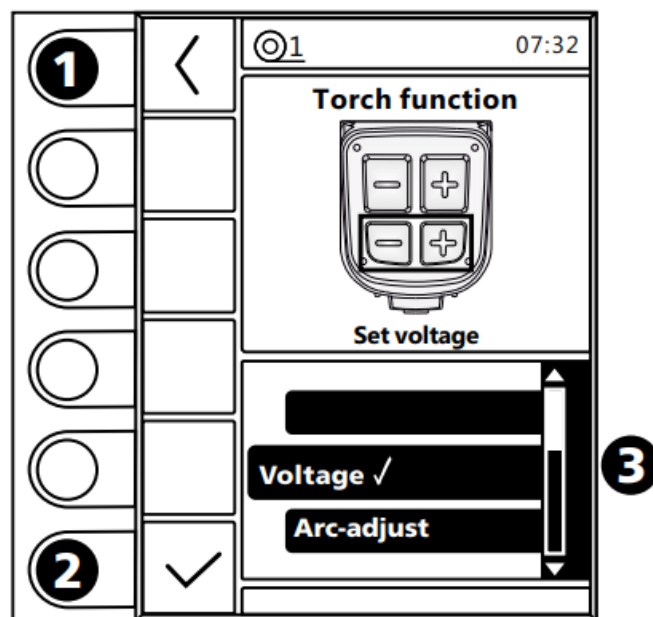
Selection of functions GRAPHICAL


Torch setup



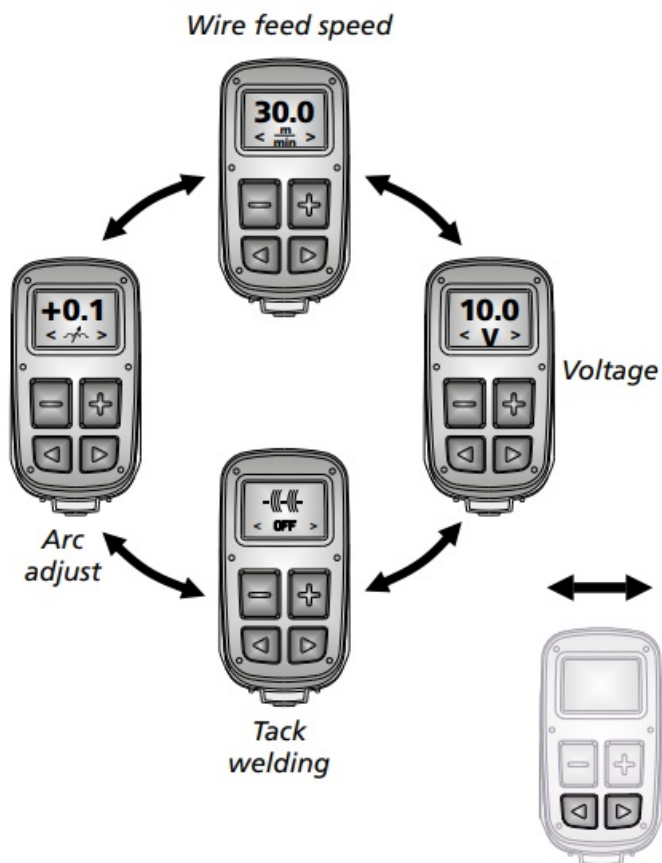
1. Home/return Return to menu
2. Change wire feeder unit
3. Selection of functions Selection of function/setting that should be controlled by the 2 key pads at the button.
4. Selection of water cooling
5. Confirm modifications

Selection of functions

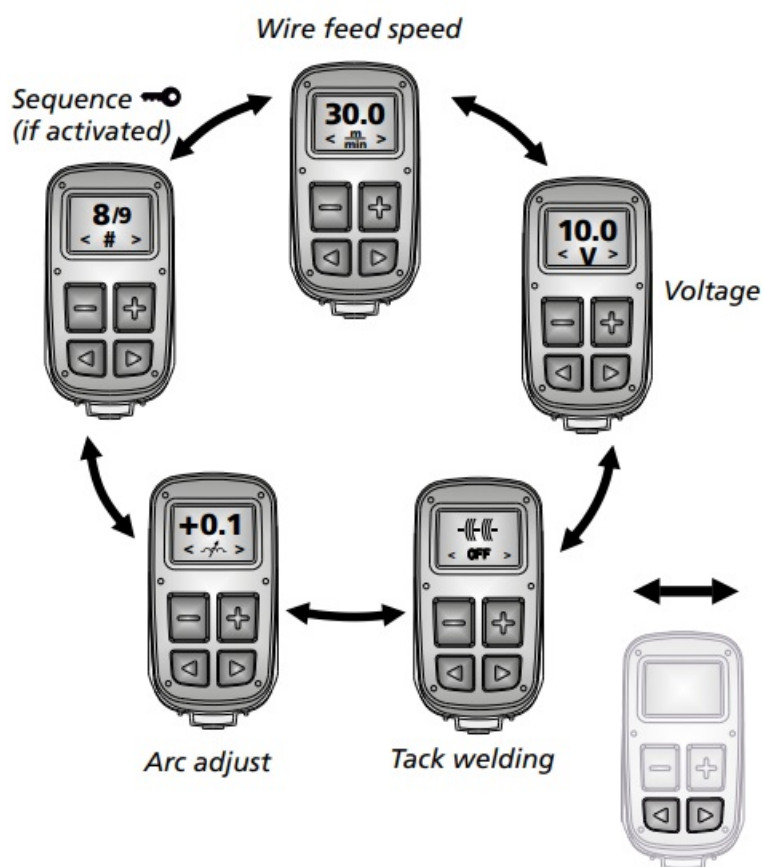


1. Home/return Return to menu
2. Confirm choice of function
3. Function list:
 - Voltage (default)
 - Arc-adjust
 - Sequence 
 - Disabled

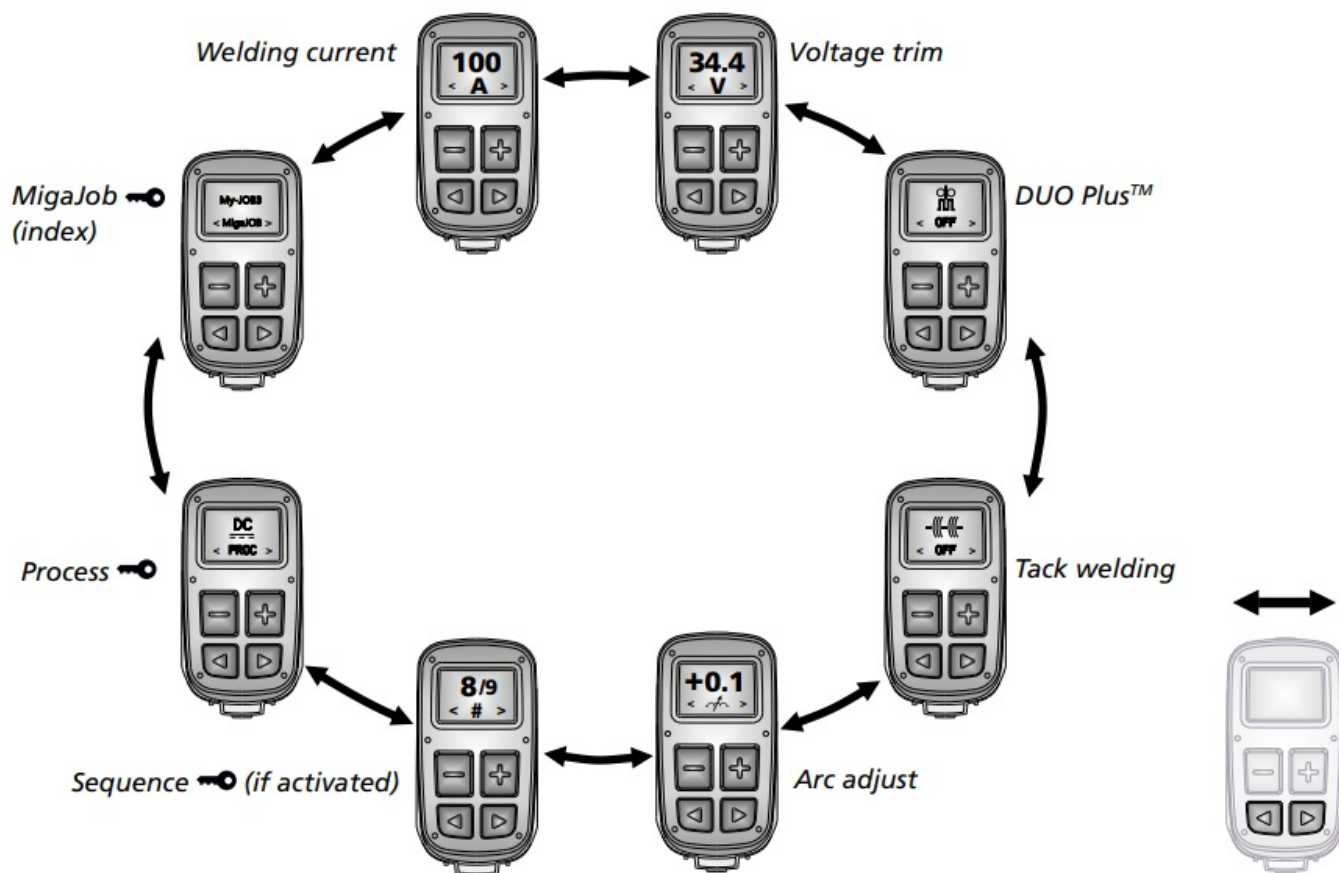
BASIC Manual MIG/MAG



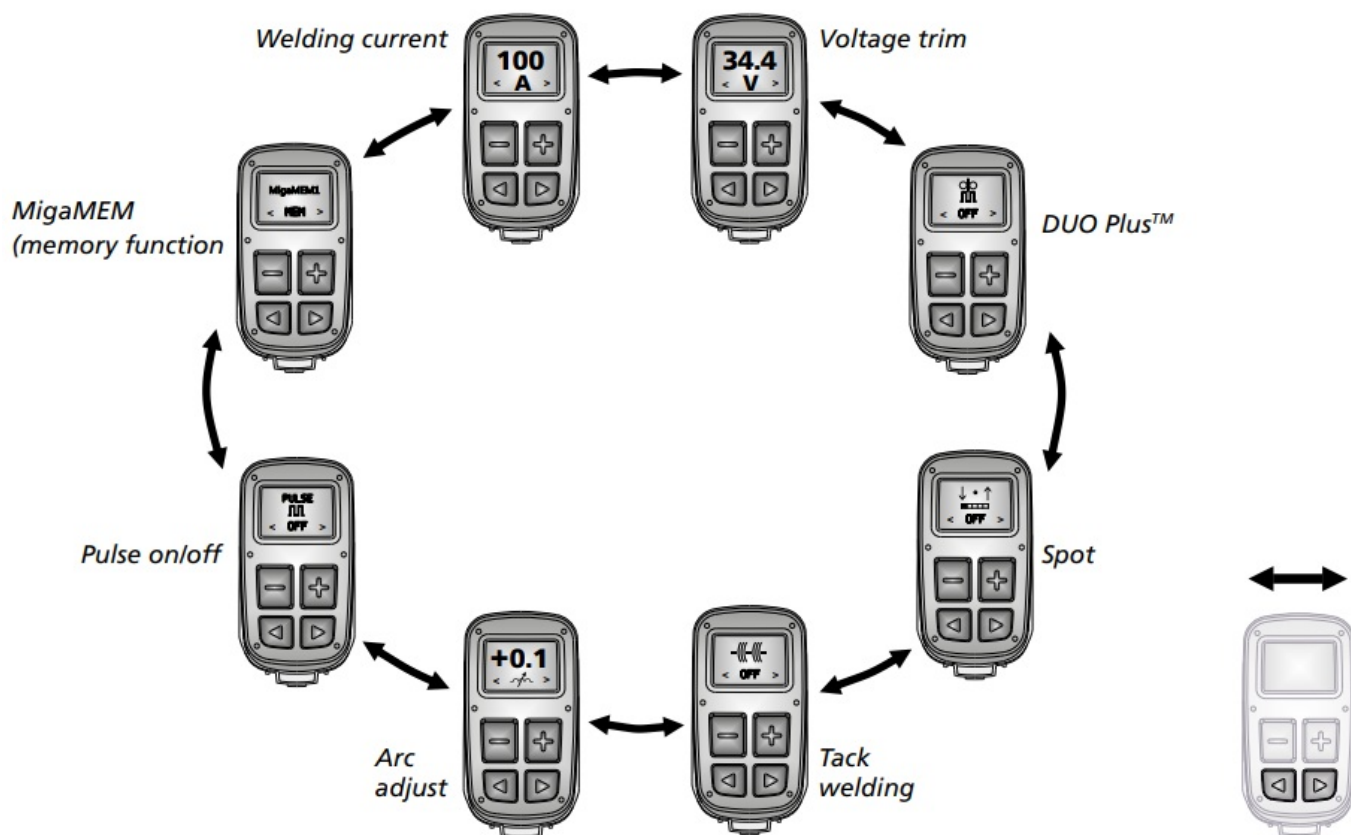
GRAPHICAL Manual MIG/MAG



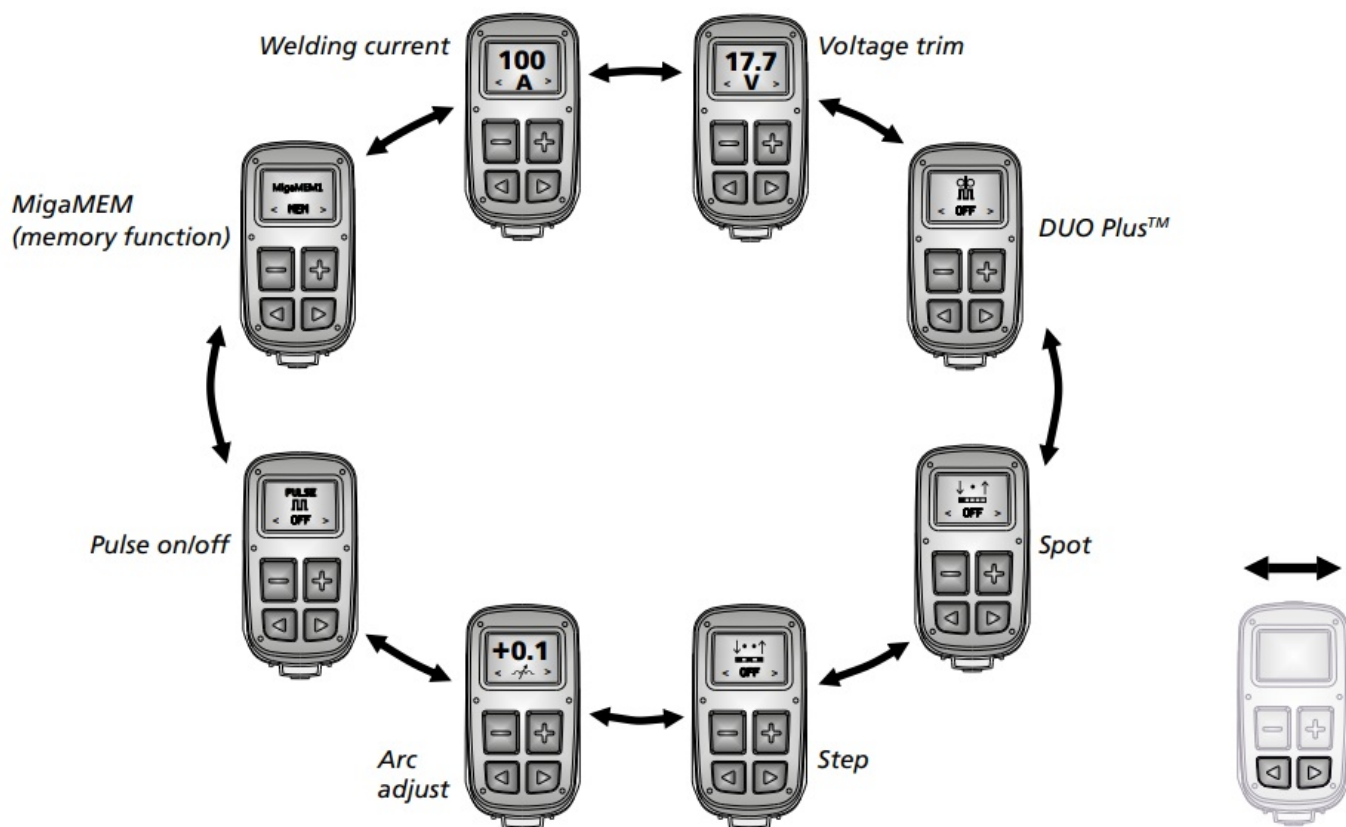
SIGMA SELECT – GRAPHICAL Synergic MIG/MAG



SIGMA ONE – GRAPHICAL Synergic MIG/MAG

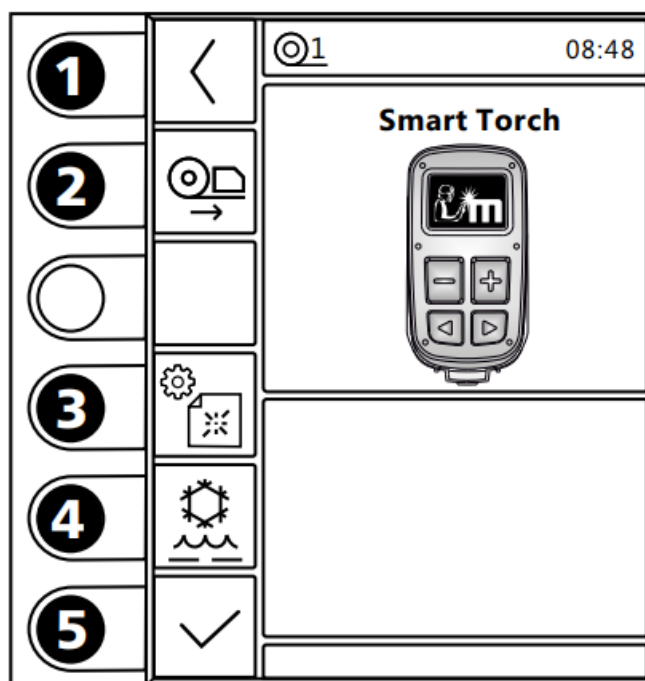


AUTOMIG PULSE – GRAPHICAL Synergic MIG/MAG

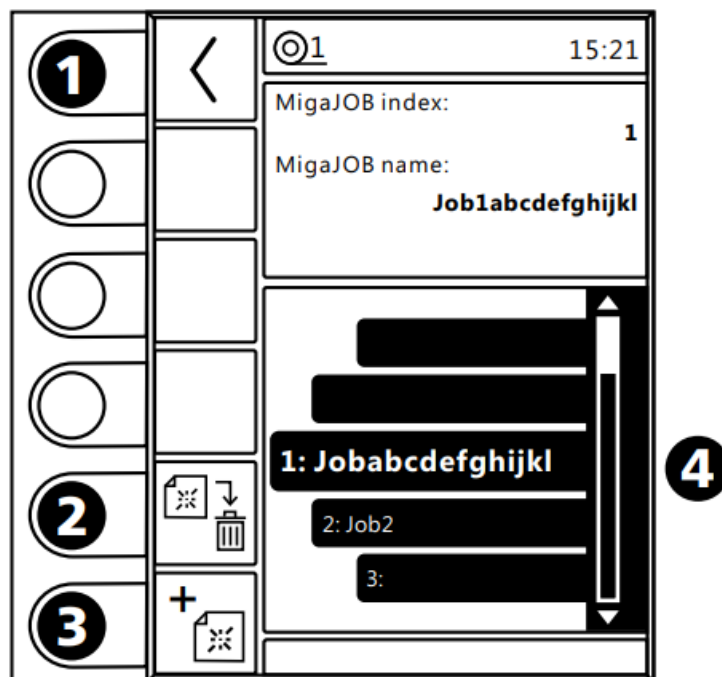


MigaJOB

Torch setup

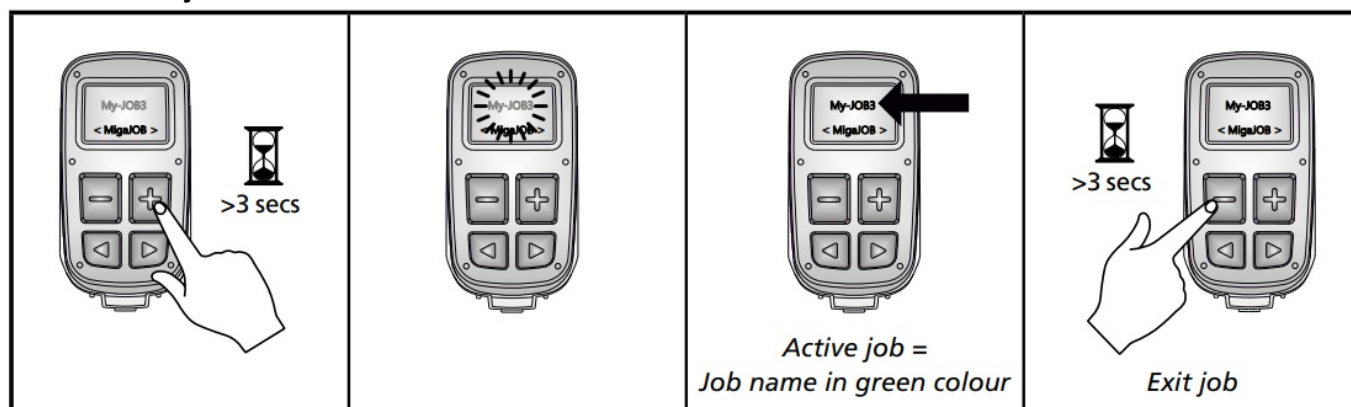


1. Home/return Return to menu
2. Change wire feeder unit
3. MigaJOB index
4. Selection of water cooling
5. Confirm modifications



1. Home/return Return to menu
2. Delete job from index
3. Add job for index
4. Index list Up to 9 jobs

Selection of job



Specifications

- Smart Torch module with 2 buttons (80100432)
- Smart Torch module with 4 buttons (80100431)
- Graphical Smart Torch module with 4 buttons (80100430)

Note: Compatible with Sigma Select/One/Core and/or Automig 300 Pulse power sources equipped with wire feeder PCB 71613664 version C1 and later. Software package 4.0 must be installed.

FAQS

Q: Can I use the Smart Torch module with any welding machine?

A: No, the Smart Torch modules are only compatible with specific Migatron power sources mentioned in the manual.

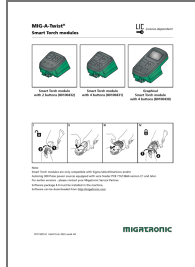
Q: How can I download the required software package?

A: You can download the software package 4.0 from <http://migatronic.com>

Q: What functions are available on the Smart Torch modules?

A: The modules offer functions such as wire feed speed adjustment, welding current control, voltage settings, arc adjustment, sequence selection, and more. Refer to the manual for specific details.

Documents / Resources



[MIGATRONIC MIG-A-Twist Smart Torch Module](#) [pdf] User Manual

80100432, 80100431, 80100430, MIG-A-Twist Smart Torch Module, MIG-A-Twist, Smart Torch Module, Torch Module, Module

References

- [User Manual](#)

[Manuals+](#), [Privacy Policy](#)

This website is an independent publication and is neither affiliated with nor endorsed by any of the trademark owners. The "Bluetooth®" word mark and logos are registered trademarks owned by Bluetooth SIG, Inc. The "Wi-Fi®" word mark and logos are registered trademarks owned by the Wi-Fi Alliance. Any use of these marks on this website does not imply any affiliation with or endorsement.