

Miele PWM 908 DP Little Giants Professional Washing Machine



Miele PWM 908 DP Little Giants Professional Washing Machine Installation Guide

[Home](#) » [Miele](#) » Miele PWM 908 DP Little Giants Professional Washing Machine Installation Guide 

Contents

- [1 Miele PWM 908 DP Little Giants Professional Washing Machine](#)
- [2 Product Information](#)
- [3 Product Usage Instructions](#)
- [4 FAQ](#)
- [5 Machine Dimensions](#)
- [6 Installation -measurements in inches](#)
- [7 Technical data](#)
- [8 Installation and planning notes](#)
- [9 Documents / Resources](#)
 - [9.1 References](#)

The Miele logo, consisting of the word "Miele" in white serif font on a dark red rectangular background.

Miele PWM 908 DP Little Giants Professional Washing Machine



Product Information

Specifications

- **Model:** PWM 908 DP
- **Manufacturer:** Miele
- **Country of Origin:** U.S.A.
- **Connection Types:** DV, AW, B, DOS, EL, F, KG, KGA, KW, DP, PA, SLA, APCL SST, APCL OB, APCL 001, WW, XKM

Product Usage Instructions

Installation Plan

Always read the operating and installation instructions before setting up, installing, and commissioning the machine

Contact Information

Technical Service U.S.A.: Phone: [800-991-9380](tel:800-991-9380),
Email: proservice@mieleusa.com

Technical Service Canada: Phone:
1-[888-325-3957](tel:888-325-3957), Email: serviceprofessional@miele.ca

Machine Dimensions

Measurements in inches:

- The distances between the machine and the wall are recommendations to help make it easier to carry out service work.
- If installation space is limited, the machine can also be pushed up against the wall.

Installation Instructions

Measurements in inches:

- Follow the recommended distances between the machine and the wall for service work convenience.
- If space is limited, the machine can be pushed up against the wall.



FAQ

- **Q:** What should I do before installing the washing machine?
- **A:** Make sure to read the operating and installation instructions provided in the manual to prevent personal injury and damage to the machine.
- **Q:** How can I contact Technical Service for assistance?
- **A:** In the U.S.A., call [800-991-9380](tel:800-991-9380) or email proservice@mieleusa.com. In Canada, call 1-[888-325-3957](tel:888-325-3957) or email serviceprofessional@miele.ca.

Always read the operating and installation instructions before setting up, installing, and commissioning the machine. This prevents both personal injury and damage to the machine.

Please have the model and serial number of your machine available when contacting Technical Service.

Legend

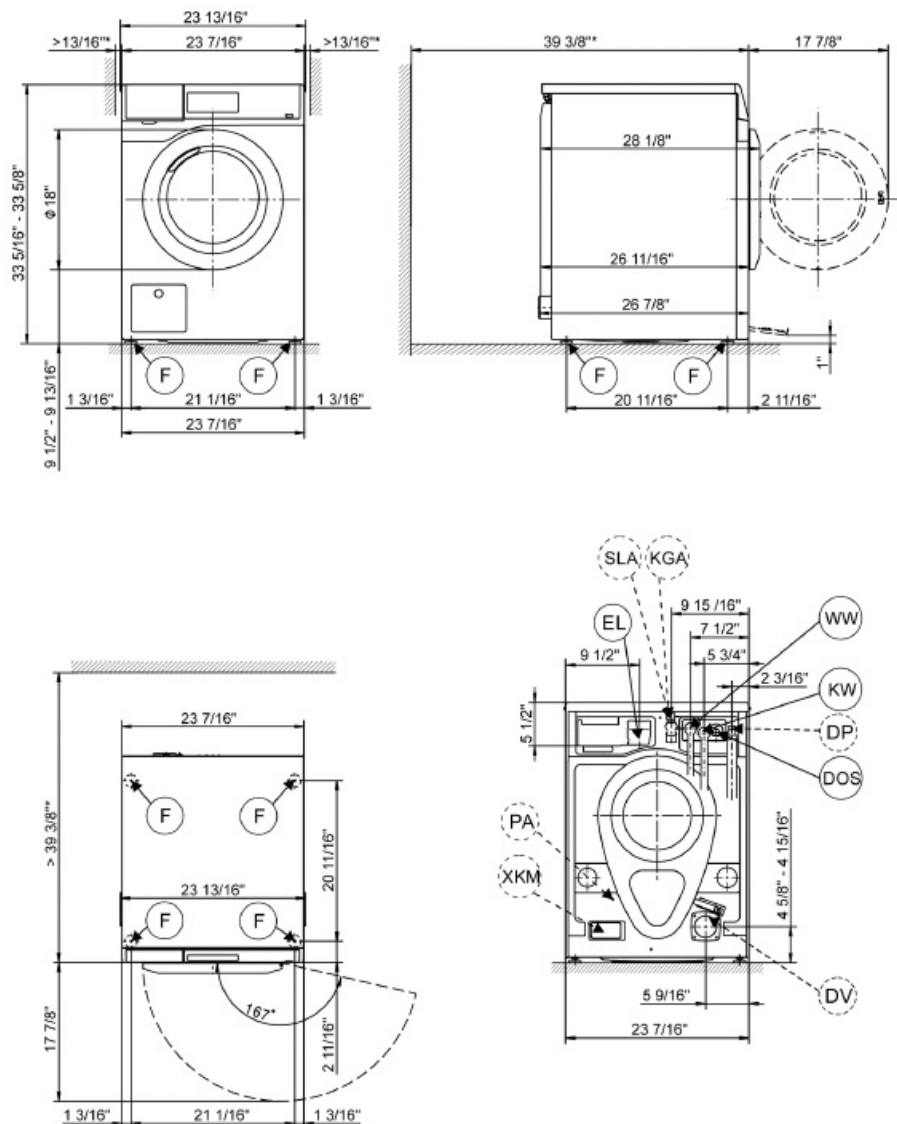
-  Connection required
- DV Drain valve
- AW Drain connection
- B Machine anchoring
- DOS Dispenser connection
- EL Electrical connection
- F Machine feet, adjustable
- KG Payment system
- KGA Payment system connection
-  Connection optional or required, depending on model
- KW Cold water connection
- DP Drain pump
- PA Equipotential bonding and grounding
- SLA Peak-load co
- APCL SST Closed plinth
- APCL OB Open plinth

- APCL 001 Washer-dryer stacking kit
- WW Hot water connection
- XKM Communication module

Machine Dimensions

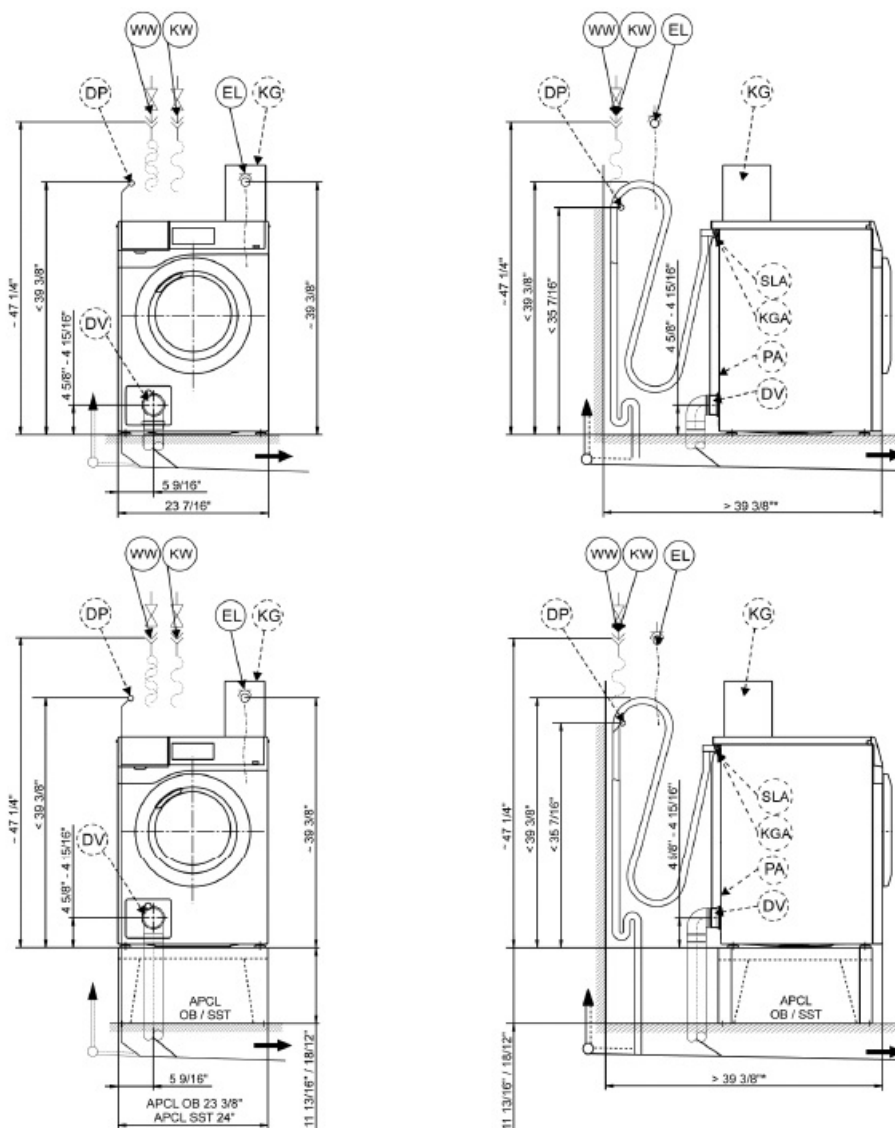
Machine dimensions -measurements in inches

- The distances between the machine and the wall are recommendations to help make it easier to carry out service work.
- If installation space is limited, the machine can also be pushed up against the wall.



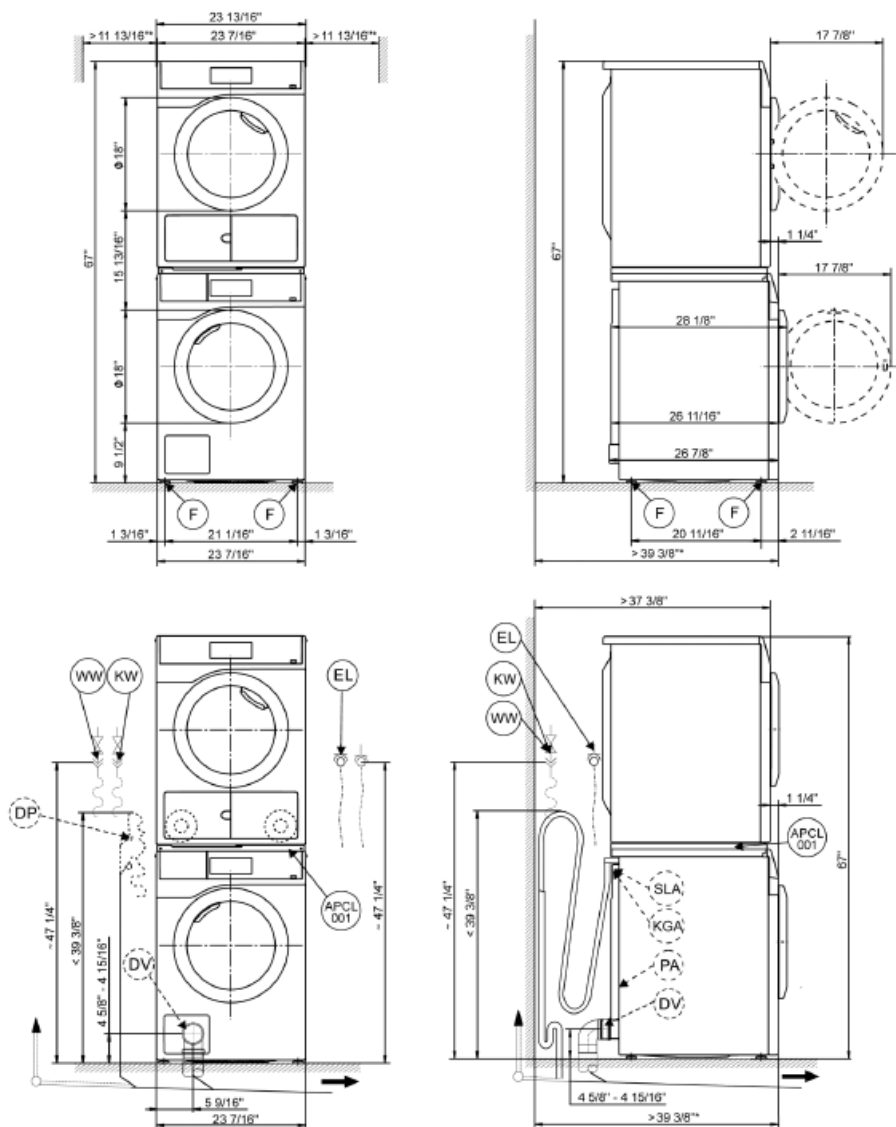
Installation -measurements in inches

- The distances between the machine and the wall are recommendations to help make it easier to carry out service work.
- If installation space is limited, the machine can also be pushed up against the wall.



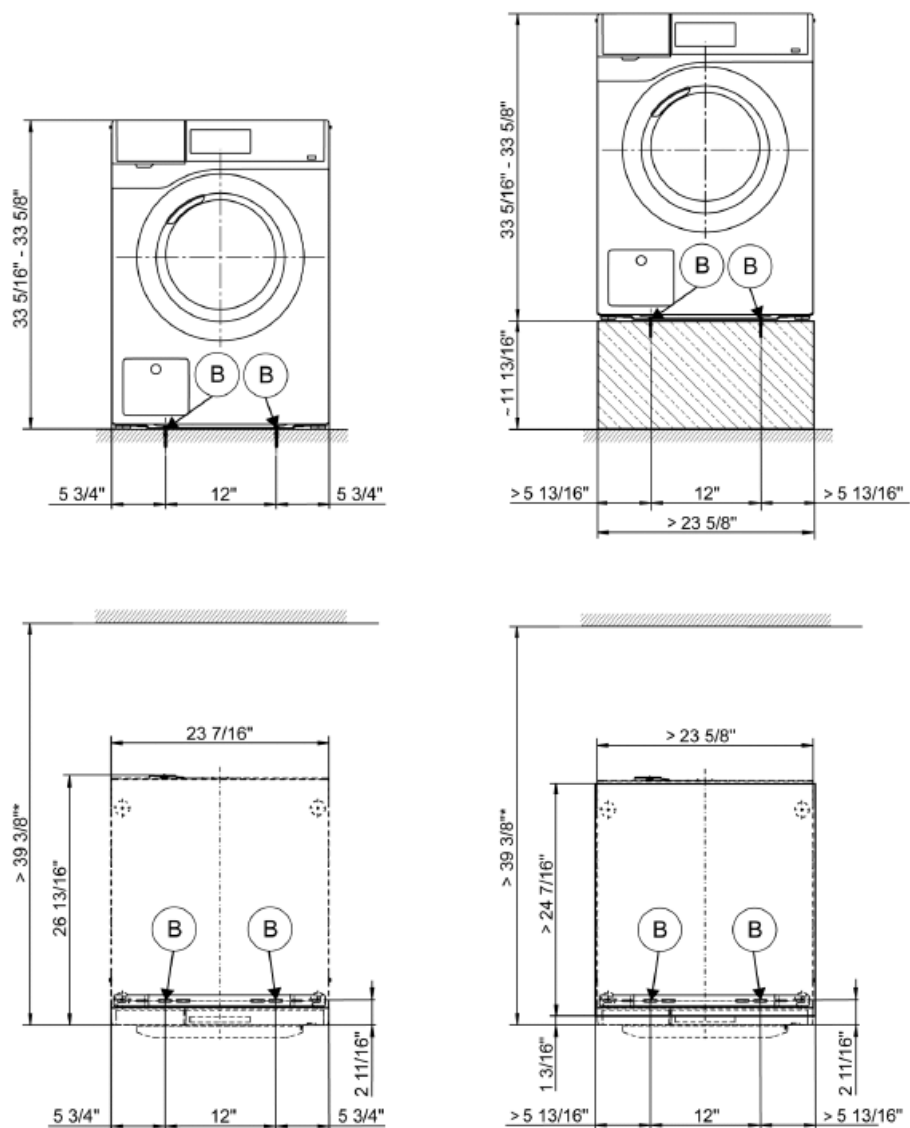
Washer-dryer stack -measurements in inches

- The distances between the machine and the wall are recommendations to help make it easier to carry out service work.
- If installation space is limited, the machine can also be pushed up against the wall.

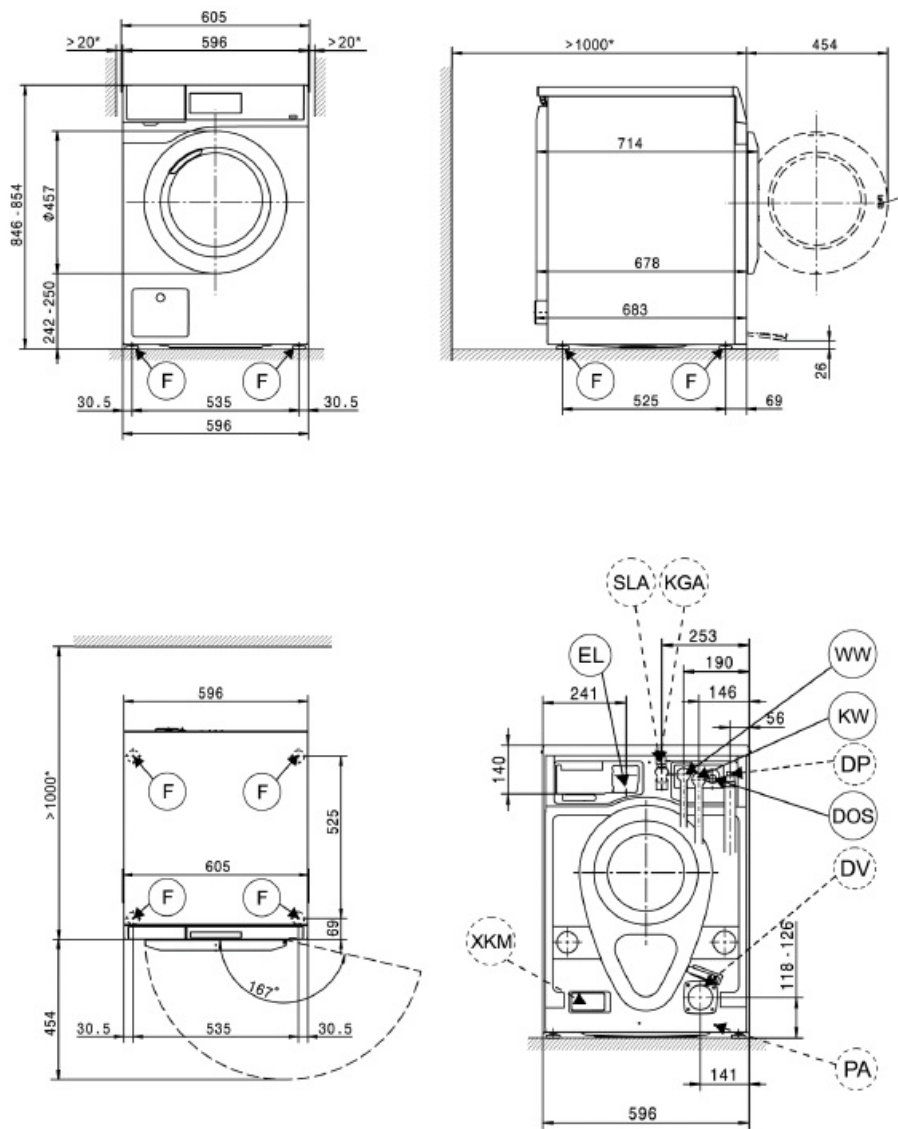


Installation -measurements in inches

- The distances between the machine and the wall are recommendations to help make it easier to carry out service work.
- If installation space is limited, the machine can also be pushed up against the wall.

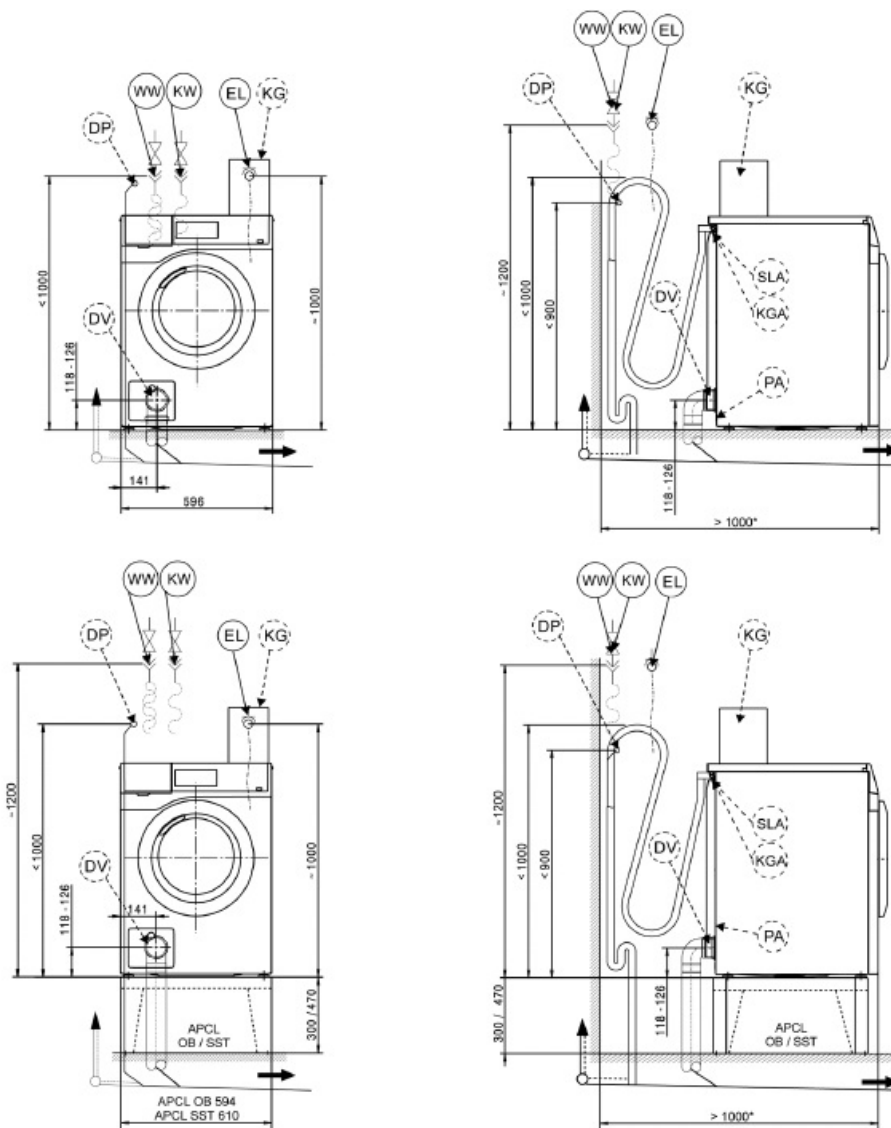


- The distances between the machine and the wall are recommendations to help make it easier to carry out service work.
- If installation space is limited, the machine can also be pushed up against the wall.



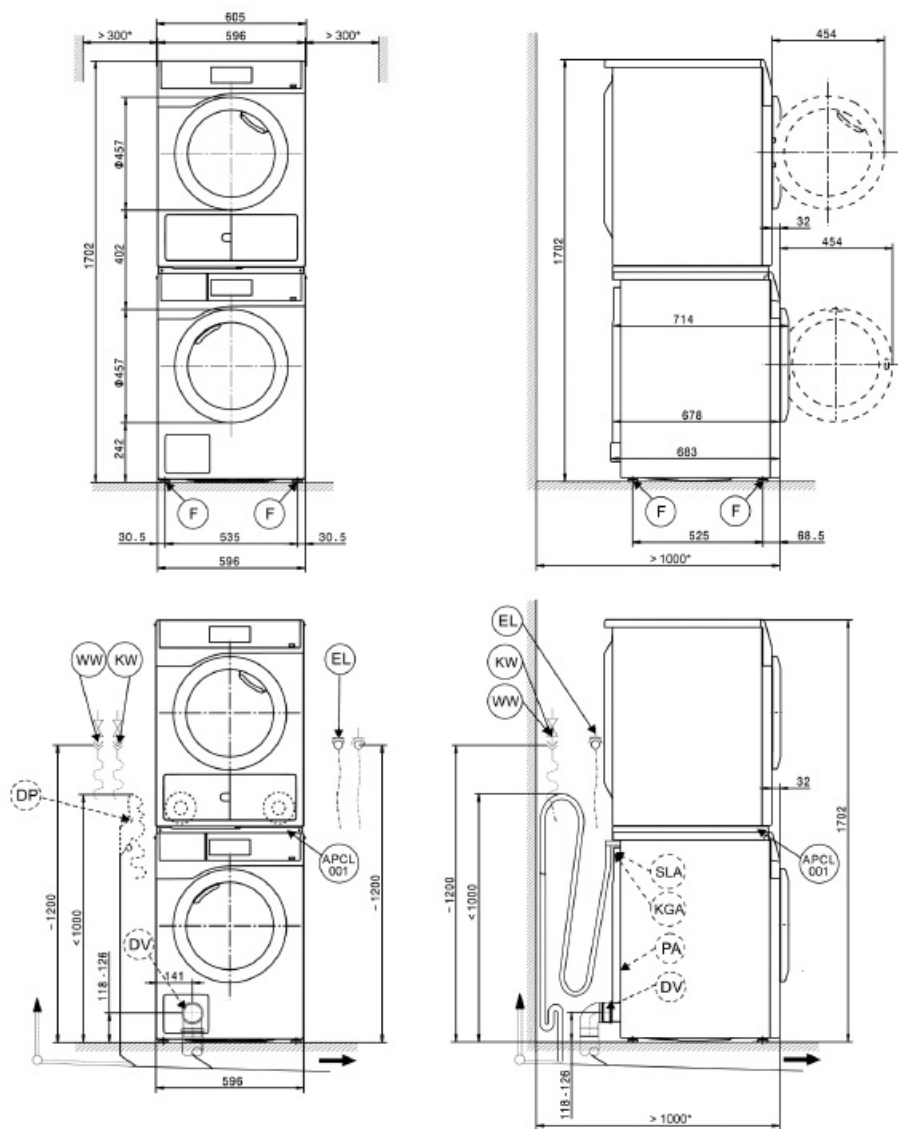
Installation -measurements in millimetres

- The distances between the machine and the wall are recommendations to help make it easier to carry out service work.
- If installation space is limited, the machine can also be pushed up against the wall.



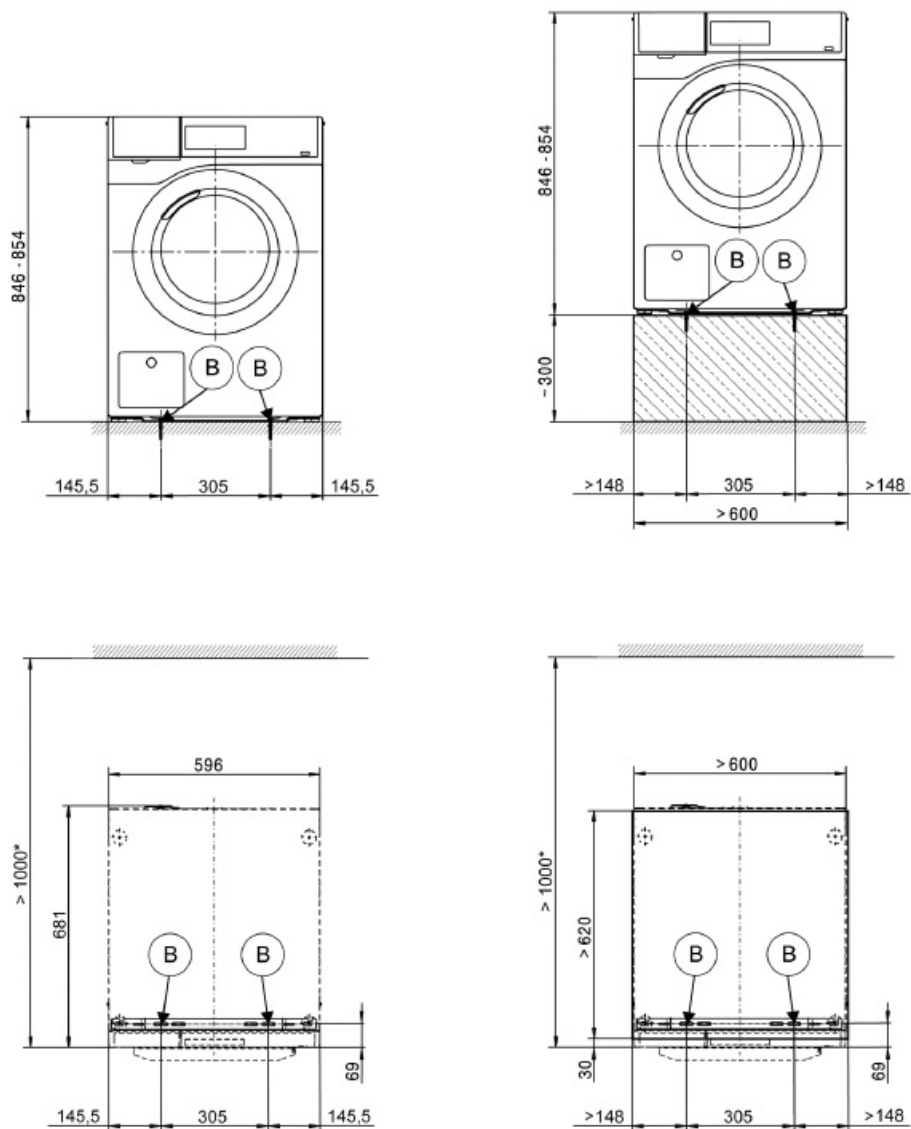
Washer-dryer stack -measurements in millimetres

- The distances between the machine and the wall are recommendations to help make it easier to carry out service work.
- If installation space is limited, the machine can also be pushed up against the wall.

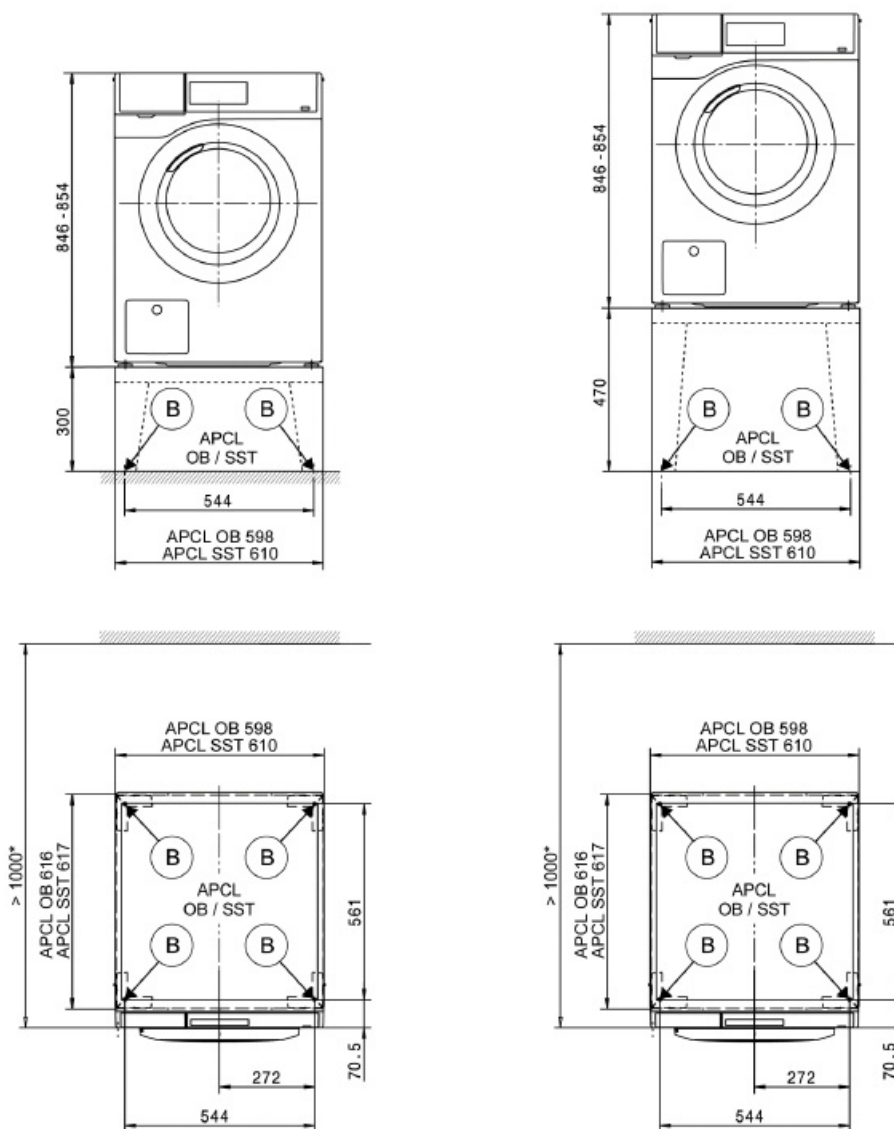


Installation -measurements in millimetres

- The distances between the machine and the wall are recommendations to help make it easier to carry out service work.
- If installation space is limited, the machine can also be pushed up against the wall.















- The distances between the machine and the wall are recommendations to help make it easier to carry out service work.
- If installation space is limited, the machine can also be pushed up against the wall.













Technical data



Drum volume	19.3 gal	73 l
Capacity	19.8 lb	9.0 kg
Door opening diameter	11 13/16"	300 mm
Max. spin speed	1,600 rpm	1,600 rpm
g-factor	613	613
Residual moisture (standard load according to DIN 60456)	48 %	48 %
Electrical connection (EL)		
Standard voltage for CDN & USA	2 AC 208–240 V	2 AC 208–240 V

Frequency	60 Hz	60 Hz
Total rated load	4.0–5.2 kW	4.0–5.2 kW
Fuse rating	2 x 30 A	2 x 30 A
Power cord min. cross-section	3 x AWG10	3 x AWG10
Wire with plug NEMA L6–30		
Wire length	78 3/4"	2,000 mm
Non-standard voltage MAR 208–240 (Marine)	2 AC 208–240 V	2 AC 208–240 V
Frequency	60 Hz	60 Hz
Total rated load	4.0–5.2 kW	4.0–5.2 kW
Fuse rating	2 x 30 A	2 x 30 A
Power cord min. cross-section	3 x AWG10	3 x AWG10
Wire with plug NEMA L6–30		
Wire length	78 3/4"	2,000 mm
Cold water (KW)		
Permissible water flow pressure	14.5–145 PSI	100–1,000 kPa
Required flow rate (cold water connection only)	2.9 gal/min	11 l/min
Required flow rate (with additional hot water connection)	2.6 gal/min	10 l/min
Average water consumption (60°C standard programme)	10.5 gal/h	40 l/h
Connection to be provided on-site, external thread according to DIN 44991 (flat seal)	3/4"	3/4"
Connection hose 1/2" with 3/4" threaded union		
Connection hose length	61"	1,550 mm

Hot water (WW)		
Max. water intake temperature	158 °F	70 °C
Permissible water flow pressure	14.5–145 PSI	100–1,000 kPa
Required flow rate	2.9 gal/min	11 l/min
Average water consumption (60°C standard programme)	3.4 gal/h	13 l/h
Connection to be provided on-site, external thread according to DIN 44991 (flat seal)	¾"	¾"
Connection hose ½" with ¾" threaded union		
Connection hose length	61"	1,550 mm
Drain pump (DP)		
Hose connection (external diameter)	7/8"	22 / DN22 mm
Max. drainage temperature	194 °F	90 °C
On-site hose sleeve (int. diameter x length)	22 x 30 mm	22 x 30 mm
Max. transient flow rate	6.8 gal/min	26 l/min
Max. delivery head (from the lower edge of the machine)	39 3/8"	1,000 mm
Drain hose DN 22 with connector (supplied as standard)		
Connection hose length	59 1/16"	1,500 mm
Potential equalization (PA)		
Machine connection (separate kit required)		
Features available via the XCI-Box accessory		

Peak load/energy management		
Payment system connection		
Liquid dispensing (DOS)		
Possible no. of dispensing pumps	1–6	1–6

Installation on machine feet (F)				
No. of machine feet	4	No.	4	No.
Machine foot, height-adjustable with thread	+5/16"		+8	mm
Machine foot diameter	1.57"		40	mm
Anchoring (B)				
Standard floor anchoring				
Floor anchor kit (for 2 machine feet) with anchors				
Wood screws according to DIN 571	6 x 50	mm	6 x 50	mm
Rawl plugs (diameter x length)	8 x 40	mm	8 x 40	mm
Anchoring of Miele Plinths				
Accessory: Miele Plinth installation (fasteners included)				
Required anchor points	4	No.	4	No.
Wood screws according to DIN 571	8 x 65	mm	8 x 65	mm
Rawl plugs (diameter x length)	12 x 60	mm	12 x 60	mm

Plinth floor anchoring (to be provided on-site)				
Machine installation on on-site plinth (concrete or masonry)				
Min. plinth installation footprint (W/D)	23 5/8" / 25 9/16"		600/650	mm
Wood screws according to DIN 571	6 x 50	mm	6 x 50	mm
Rawl plugs (diameter x length)	8 x 40	mm	8 x 40	mm
Machine data				
Overall machine dimensions (H/W/D)	33 15/32" / 23 13/16" / 28 7/64"		850/605/714	mm
Casing dimensions (H/W/D)	33 15/32" / 23 7/16" / 26 1 1/16"		850/596/678	mm
Site-access dimensions (H/W)				
Min. site-access opening (excl. packaging)	35 7/16" / 23 13/16"		900/605	mm
Installation dimensions				
Side gap	13/16"		20	mm
Recommended side gap – washer-dryer stack	11 13/16"		300	mm
Recommended distance to the opposite wall from front of the machine	39 3/8"		1,000	mm
Weights and floor loads				
Machine weight (net weight)	227	lb	103	kg

Max. floor load in operation	2,820	N	2,820	N
Max. floor load, static	1,380	N	1,380	N
Max. floor load, dynamic	1,365	N	1,365	N
Emissions				
Sound pressure level (under EN ISO 11204/11203)	<70	dB(A)	<70	dB(A)
Heat dissipation rate to installation site	250	W	250	W

Installation and planning notes

Installation requirements

- The machine should only be connected to a power supply provided by all appropriate local and national legislation and regulations.
- In addition, all regulations issued by the appropriate utilities as well as standards relating to occupational safety and all applicable valid regulations and technical standards must be observed.

Transportation and site access

- The washing machine must not be moved without the shipping struts in place. Keep the struts in a safe place. They must be refitted if the machine is to be moved again (e.g., when moving house).

General operating conditions

- Ambient temperature in installation room: +36°F to +95°F (+2°C to +35°C).
- Depending on the nature of the installation site, sound emissions and vibration may occur. Miele recommends having the installation site inspected and seeking the advice of a professional in instances where increased noise may cause a nuisance.

Electrical connection

- Depending on the model, the machine will be delivered with a wire with/without a plug.
- The machine may only be connected to an electrical system that conforms to national and local codes and regulations. This connection must be made by a qualified electrician.
- The data tag indicates the nominal power consumption and the appropriate fuse rating. Compare the specifications on the data tag with those of the electrical power supply.

- The machine can either be hard-wired or connected using a plug-and-socket connection under IEC 60309-1. Miele always recommends connecting the machine via a plug and socket so that electrical safety checks can be carried out easily (during repair or service work, for example).
- If the machine is hard-wired, a dual circuit breaker must be provided on-site. When switched off, there must be an all-pole contact gap of at least 3 mm in the isolator switch (including circuit breakers, breakers, and relays according to IEC/EN 60947).
- The plug connector or isolator switch should be easily accessible at all times. If the machine is disconnected from the electricity supply, the isolator must be lockable or the point of disconnection must be monitored at all times.
- New connections, modifications to the system, or servicing of the ground conductor, including determining the correct fuse rating, must be carried out by a qualified electrician, as they are familiar with the pertinent regulations and the specific requirements of the electric utility company.

If converting the machine to an alternative voltage, follow the instructions in the wiring diagram. Conversion must be performed by Miele Technical Service or by an authorized service technician. The heater rating must also be adapted.

References to cable cross-sections in the technical data refer only to the required power cord. Please consult relevant local and national regulations when calculating any other wire gauges.

Cold water connection

The washing machine should be connected to a domestic water supply under current local and national safety regulations.

Connection to the water supply should be carried out by a qualified plumber using a stopcock with a threaded union. If a stopcock is not available, the qualified plumber should connect the machine to the domestic water supply.

A suitable connection hose with a threaded union is supplied with the machine.

Hot water connection

- The same connection requirements as for cold water also apply to hot water (max. 158°F/70°C).
- A suitable connection hose with a threaded union is supplied with the machine.
- The hot water connection appliance also requires a cold water connection.
- In the event that hot water is not available on-site, the connection of the second hose must be made to a cold water supply.
- Alternatively, the hot water connection should be blocked using the enclosed blind stopper and the machine controls set to cold water intake.
- The required amount of hot water should be added to the cold water volume.

Drain valve (depending on model)

- The machine is drained using a motorized drain valve. It can be connected directly to the on-site drainage system (without a siphon) or via a floor drain (gully with odor trap).
- A vented drainage system is vital for unimpeded drainage. If on-site venting is insufficient, a vent kit (mat. no. 05 239 540) is available from your Miele dealer or Miele Technical Service.
- If several machines are connected to a single drain pipe, this should be sufficiently large to allow all machines to drain simultaneously.

Drain pump (depending on model)

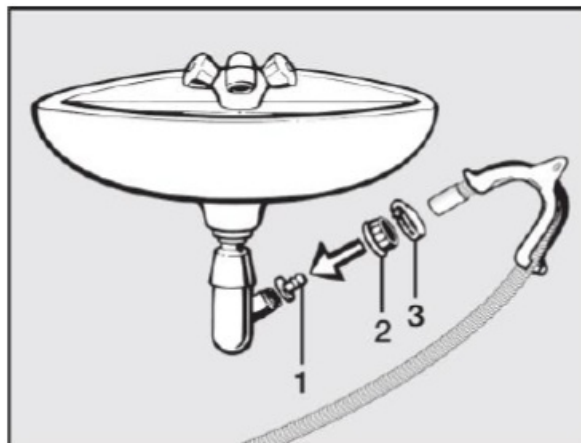
- The suds are drained through a drain pump with a 1 m delivery head. For the water to drain freely, the hose must be installed free of kinks.

Drainage options

1. Connected securely to a plastic drain pipe with a rubber nipple (there is no need to use a siphon).
2. Connected securely to a sink with a plastic nipple.
3. Connected securely to a floor drain.

Connecting the drain hose to a sink drain outlet

The drain hose can be connected securely to a suitable sink drain outlet.



- If required, the hose can be extended to a length of up to 16.4 ft (5 m).
- Accessories are available from your Miele dealer or Miele Technical Service.
- For a drain height of more than 3' 3 3/8" (1 m) up to a max. of 1.6 m), a replacement drain pump is available from Miele Technical Service or your Miele dealer.

Equipotential bonding and grounding

- If necessary, an equipotential bond with a good contact connection must be provided under all appropriate national and local regulations.
- Material for equipotential bonding and grounding must be provided on site or using a kit available from Miele Technical Service.

Peak load/Energy management

- The machine can be connected to a peak-load or energy management system using an optional kit.
- When the peak-load function is activated, the heating is deactivated.
- A message appears in the display to inform you of this.

Documents / Resources

 <p>Professional Pure Washing Machine</p> <p>PWM 908 DP</p>	<p>Miele PWM 908 DP Little Giants Professional Washing Machine [pdf] Installation Guide PWM 908 DP, PWM 908 DP Little Giants Professional Washing Machine, Little Giants Professional Washing Machine, Giants Professional Washing Machine, Professional Washing Machine, Washing Machine, Machine</p>
--	--

References

- [🌐 Miele Professional CA-en | Discover our Commercial Solutions](#)
- [🇺🇸 Miele Professional US | Discover our Commercial Solutions](#)
- [User Manual](#)

[Manuals+](#), [Privacy Policy](#)

This website is an independent publication and is neither affiliated with nor endorsed by any of the trademark owners. The "Bluetooth®" word mark and logos are registered trademarks owned by Bluetooth SIG, Inc. The "Wi-Fi®" word mark and logos are registered trademarks owned by the Wi-Fi Alliance. Any use of these marks on this website does not imply any affiliation with or endorsement.