



# MIDLAND BT Mini Bluetooth Intercom Helmet Installation Guide

[Home](#) » [MIDLAND](#) » MIDLAND BT Mini Bluetooth Intercom Helmet Installation Guide 



MIDLAND BT



INSTALLATI ON

## Contents

### 1 MOUNTS

### 2 MICROPHONES

### 3 SPEAKERS

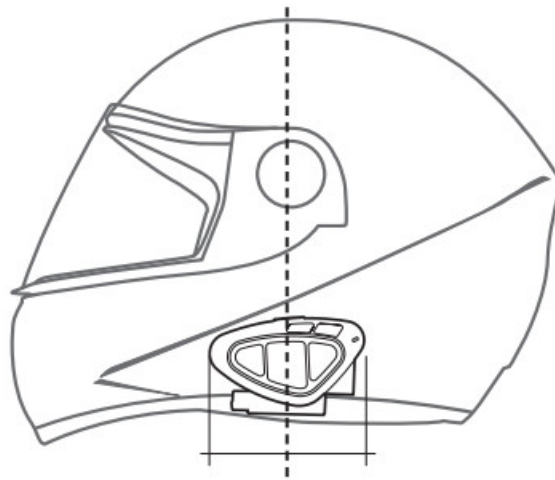
### 4 ATTACH/DETACH

### 5 Documents / Resources

#### 5.1 References

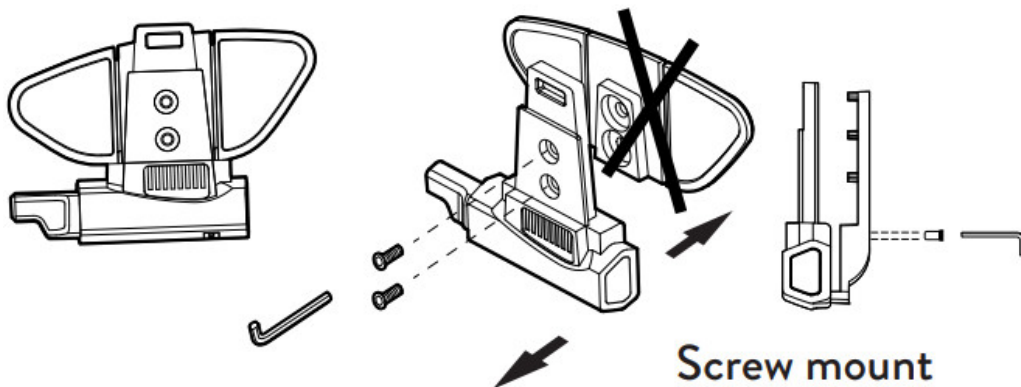
## MOUNTS

Place the MIDLAND BT on the left side of your helmet using the adhesive mount or the screw mount.

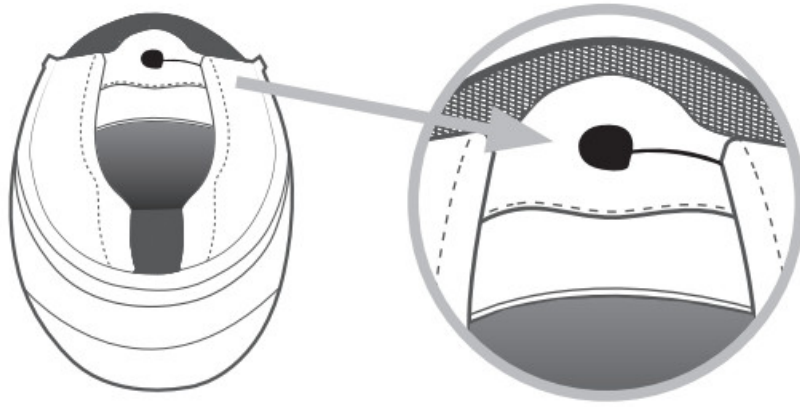


### Adhesive mount

clean surface before apply



## MICROPHONES



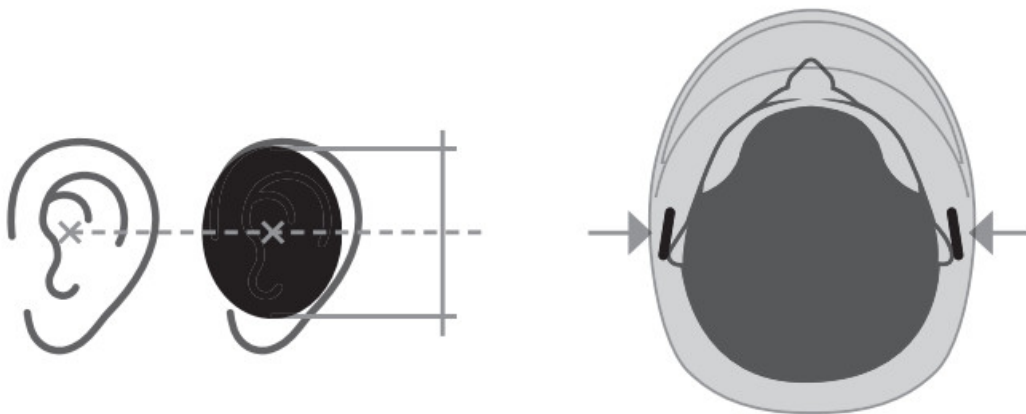
**Full face helmets:** place the wired microphone in front of your mouth.

**Modular/jet helmets:** fix the boom mike on the left side and keep the sponge as closely as possible to your mouth (white symbol in front of your mouth).

**Attention:** for jet helmets, it is also available a specific ext. boom microphone (optional, cod. C1253).

## SPEAKERS

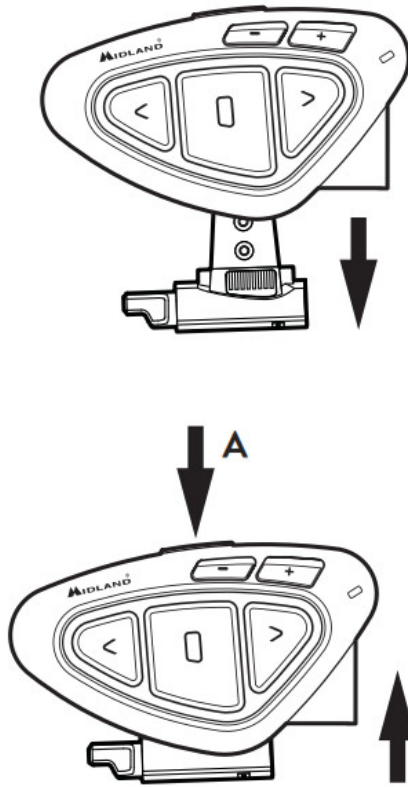
The position of the speakers is the most important point of the installation process.



**Caution:** for the best sound clarity, it is very important to place the speakers in line with the center of your ears and as close as possible (the speakers should reach almost to your ears). If necessary, use the supplied dividers to better fit the speakers in your ears. The recesses of the speakers designed into the helmets are not always placed in the best location for you. Be sure to adjust the speakers as indicated above.

## ATTACH/DETACH


The MIDLAND BT can be easily fitted onto the helmet by sliding it downwards into the slot of the adhesive Mount.



To detach MIDLAND BT, simply press the fixing clip (A) and push the unit upwards.



## Documents / Resources

	<a href="#">MIDLAND BT Mini Bluetooth Intercom Helmet</a> [pdf] Installation Guide 2022, BT Mini Bluetooth Intercom Helmet, BT, Mini Bluetooth Intercom Helmet, Bluetooth Intercom Helmet, Intercom Helmet, Helmet
---	---

## References

- [User Manual](#)

[Manuals+](#), [Privacy Policy](#)

This website is an independent publication and is neither affiliated with nor endorsed by any of the trademark owners. The "Bluetooth®" word mark and logos are registered trademarks owned by Bluetooth SIG, Inc. The "Wi-Fi®" word mark and logos are registered trademarks owned by the Wi-Fi Alliance. Any use of these marks on this website does not imply any affiliation with or endorsement.