

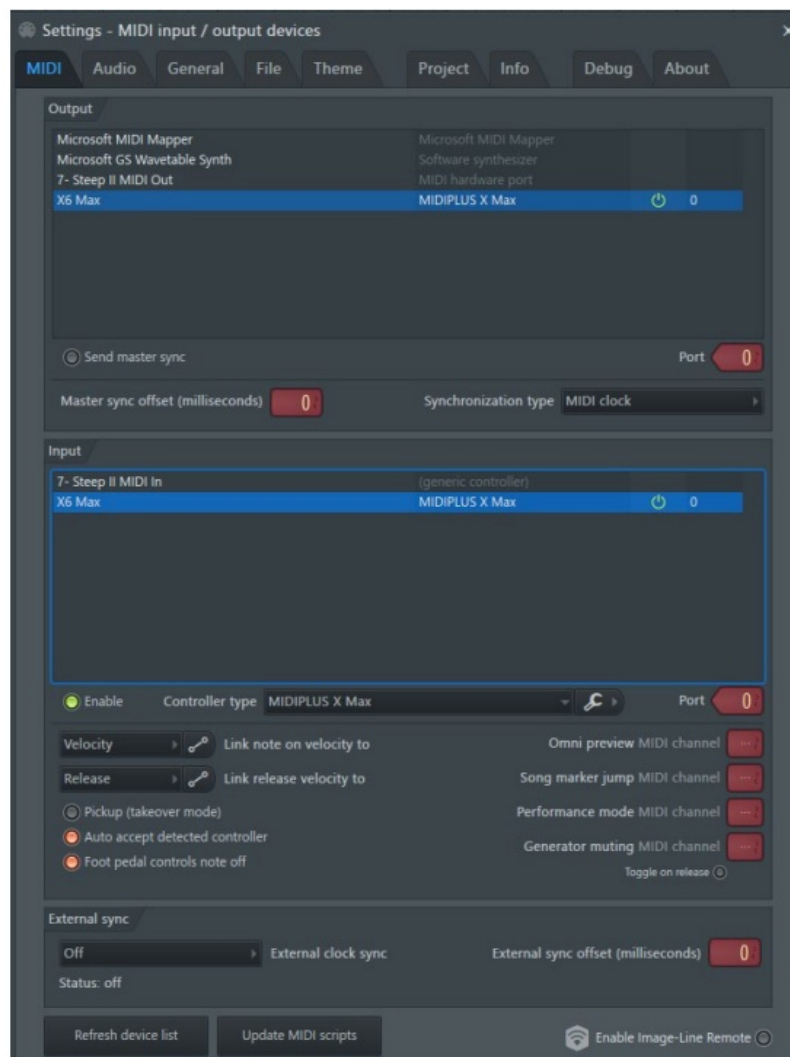


Contents [[hide](#)]

- [1 MIDIPLUS X Max Series DAW Remote Script](#)
- [2 Specifications](#)
- [3 Product Usage Instructions](#)
- [4 Ableton Live](#)
- [5 Cubase/Nuendo](#)
- [6 FL Studio](#)
- [7 Logic Pro X](#)
- [8 FAQs](#)
- [9 Documents / Resources](#)
 - [9.1 References](#)

MIDIPLUS

MIDIPLUS X Max Series DAW Remote Script



Specifications

- Product Name: X Max Series DAW Remote Script
- Manufacturer: MIDIPLUS
- Version: V1.0.2

Product Usage Instructions

Ableton Live

Installation Steps:

1. Locate the following directory:
 - PC Users: C:\Users(Your Username)\AppDataRoaming\AbletonLive (Version Number)\Preferences\User Remote Scripts
 - Mac Users: mac/Users/(Your Username)/library/preferences/Ableton/Live (Version Number)/User Remote Scripts

2. Copy the decompressed script folder (including the outer MIDIPLUS script folder) into the User Remote Scripts folder.
3. Connect the MIDI keyboard to your computer, press the SCENE button on the MIDI keyboard, and use the X knob to select the ABLETON LIVE preset. Then open the Ableton Live software.
4. Open Options – Preferences and go to the Link/Tempo/MIDI tab.
5. In the Control Surface section, select your keyboard model.
6. In the Input/Output section, select your MIDI keyboard.
7. Set the MIDI Ports as shown in the image below to start using.

Script Features:

- 6 transport buttons correspond to: Rewind, Fast Forward, Loop, Record, Play, and Stop.
- 8 knobs correspond to: Quick mapping parameters for software instruments and plugins.
- 8 buttons control mute for 8 tracks.
- 8 faders adjust the volume of the current 8 tracks.

Ableton Live

Installation Steps

Locate the following directory:

PC Users

C:\Users\Your Username\AppData\Roaming\Ableton\Live (Version Number)\Preferences\User Remote Scripts

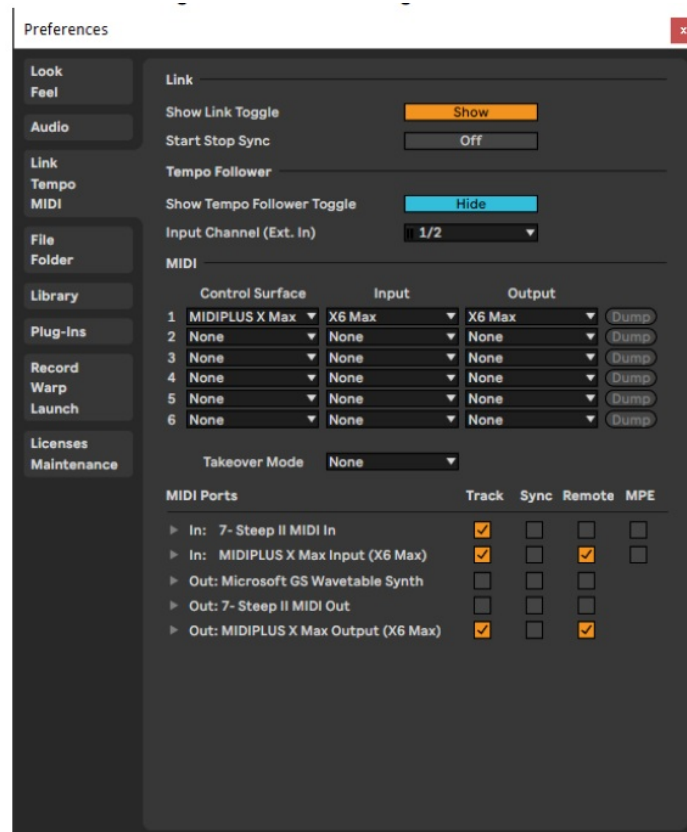
Mac Users

mac/Users/Your Username/library/preferences/Ableton/Live (Version Number)/User Remote Scripts

1. Copy the decompressed script folder (including the outer MIDIPLUS script folder) into the User Remote Scripts folder.
2. Connect the MIDI keyboard to your computer, press the SCENE button on the MIDI

keyboard, and use the X knob to select the ABLETON LIVE preset. Then open the Ableton Live software.

3. Open Options – Preferences and go to the Link/Tempo/MIDI tab.
4. In the Control Surface section, select your keyboard model.
5. In the Input/Output section, select your MIDI keyboard.
6. Set the MIDI Ports as shown in the image below to start using.



Script Features

- 6 transport buttons correspond to: Rewind, Fast Forward, Loop, Record, Play, and Stop.
- 8 knobs correspond to: Quick mapping parameters for software instruments and plugins.
- 8 buttons control mute for 8 tracks.
- 8 faders adjust the volume of the current 8 tracks.

Cubase/Nuendo

Installation Steps

Locate the following directory:

PC Users

C:\Users\Your Username\Documents\Steinberg\Cubase\MIDI Remote\Driver Scripts\Local

Mac Users

mac/Users/Your Username/Documents/Steinberg/Cubase/MIDI Remote/Driver Scripts/Local

1. Copy the decompressed script folder (including the outer MIDIPLUS script folder) into the Local folder
2. Connect the MIDI keyboard to your computer, press the SCENE button on the MIDI keyboard, and use the X knob to select the CUBASE preset. Then open Cubase to start using.

Script Features

The X knob rotates to switch tracks; pressing it opens software instruments.

- 6 transport buttons correspond to: Rewind, Fast Forward, Loop, Record, Play, and Stop.
- 8 knobs correspond to: Quick mapping parameters for software instruments and plugins.
- 8 buttons correspond to B1: Undo B2: Redo B3: Solo B4: Mute B5: Metronome B6: MixConsole
- B7: Export Audio B8: Save Project.
- 8 faders adjust the volume for the current eight tracks. Use the X knob to switch between different track groups, enabling volume adjustment for all tracks in the project.

Notes

If the script does not work or is not recognized, please check the following:

1. The SCENE button is set to CUBASE mode.
2. The MIDI keyboard channel is set to Channel 1. (long-press the X knob and use the keyboard's secondary function to switch channels)
3. Disable and re-enable the script. (required when reconnecting multiple X Max models)

4. The software version is Cubase 11 or higher.
 1. Ensure that the SCENE button has been used to switch to CUBASE mode.
 2. Ensure that the MIDI keyboard channel is set to channel 1 (long press the X knob and use the secondary function keys to switch channels).
 3. Try disabling the script and then re-enabling it (this is necessary when connecting multiple models).
 4. Ensure that you are using Cubase 11 or later.

FL Studio

Installation Steps

Locate the following directory:

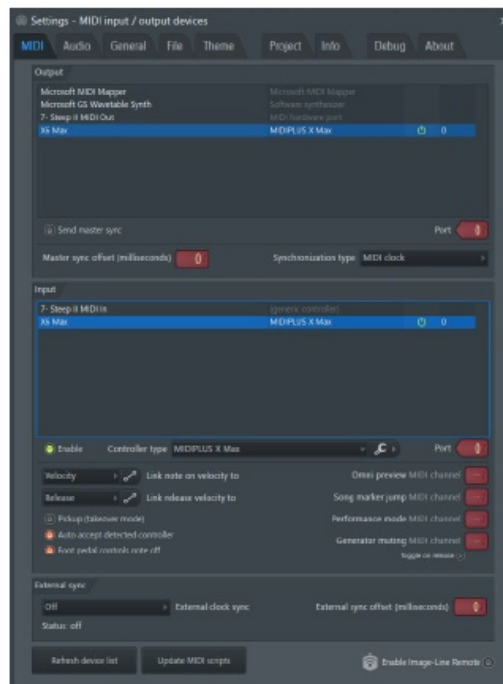
PC Users

C:\Users\Your Username\Documents\Image-Line\FL Studio\Settings\Hardware

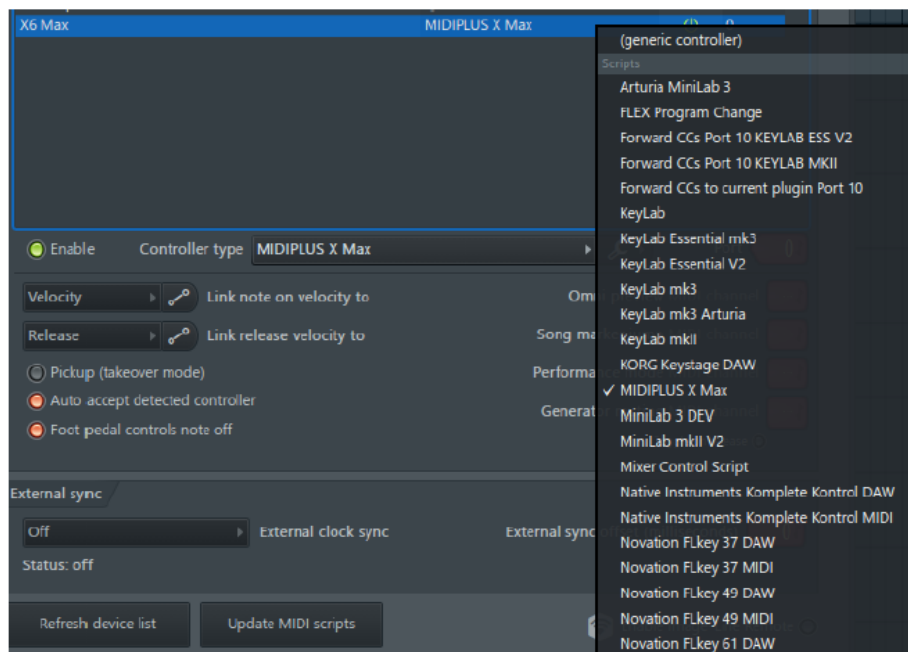
Mac Users

mac/Users/Your Username/Documents/Image-Line/FL Studio/Settings/Hardware

1. Copy the decompressed script folder (including the outer MIDIPLUS script folder) into the Hardware folder.
2. Connect the MIDI keyboard to your computer, press the SCENE button on the MIDI keyboard, and use the X knob to select the FL STUDIO preset. Then open FL Studio.
3. Click Options – MIDI Settings in the FL Studio.
4. In the Settings – MIDI Input/Output Devices window, select the MIDI tab, then highlight and select your X Max series keyboard in both the Output and Input sections.



5. In the Controller type dropdown, select the MIDIPLUS X Max script, set both input and output Ports to 0, and click the Enable button.



Script Features

The X knob rotates to switch channels and control the playback bar; pressing it opens VST instruments.

- 6 transport buttons correspond to: Rewind, Fast Forward, Loop, Record, Play, and Stop.
- 8 knobs provide mapping for plugin parameters or panning.
- 8 buttons correspond to B1: Undo B2: Redo B3: Solo B4: Mute B5: Metronome B6: Toggle between song/pattern mode B7: Switch edit areas B8: Save Project.

- 8 faders adjust the volume for the current 8 tracks. Use the X knob to adjust the volume for all tracks in the project.

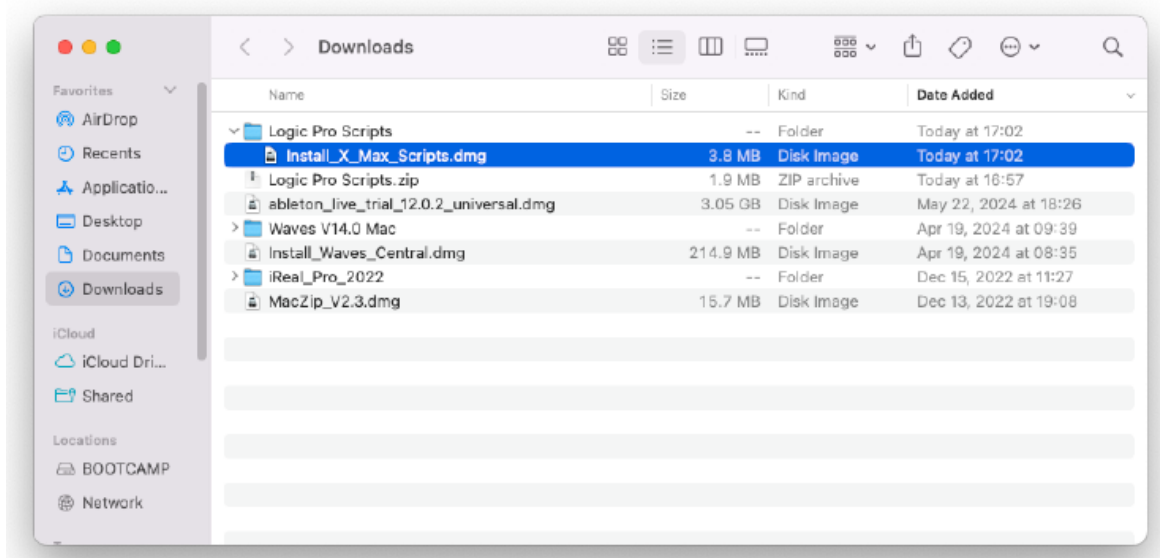
Notes

This script requires FL Studio 2024 or later. Older versions may have compatibility issues.

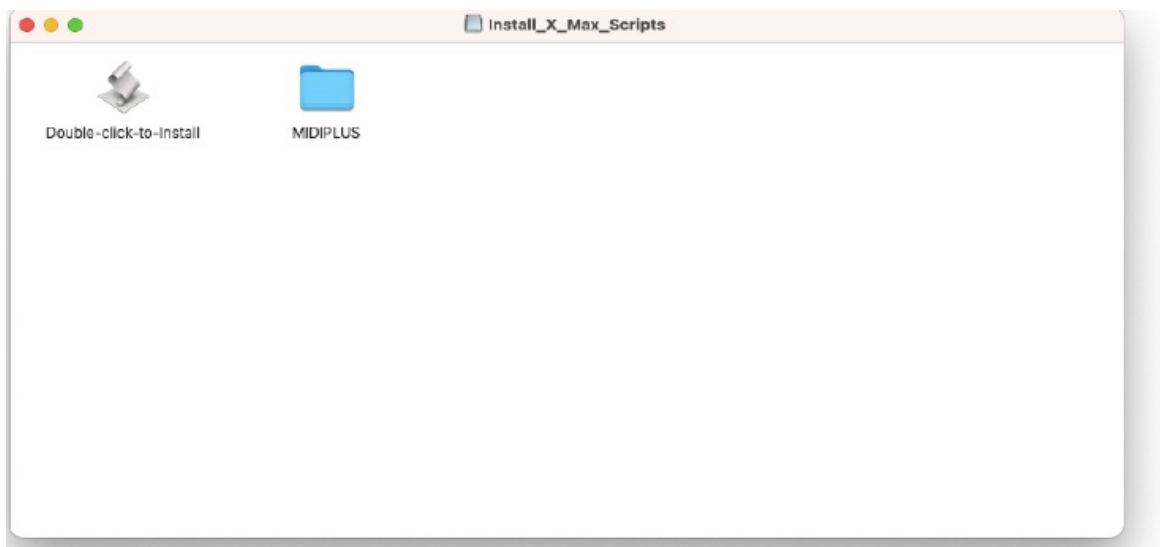
Logic Pro X

Installation Steps

1. Decompress the script file.
2. Double-click to load the Install_X_Max_Scripts.dmg.



3. Double-click the Double-click-to-Install icon to install.



Script Features

The X knob rotates to switch tracks; pressing it opens software instruments.

- 6 transport buttons correspond to: Rewind, Fast Forward, Loop, Record, Play, and Stop.
- 8 knobs provide mapping for plugin parameters or panning.
- 8 buttons correspond to: B1:Undo B2: Redo B3: Sole B4: Mute B5: Metronome B6: Note Quantize
- B7: Track/Instrument Switch B8: Save Project.
- 8 faders adjust the volume for the current 8 tracks. Use the X knob to adjust the volume for all tracks in the project.

Note: This script is also compatible with GarageBand.


FAQs

Q: What should I do if the script is not working or is not recognized?

A: If the script does not work or is not recognized, please follow these steps:

1. Ensure the SCENE button is set to the correct mode (e.g., CUBASE mode).
2. Check that the MIDI keyboard channel is set to Channel 1 (long-press the X knob and use the keyboard’s secondary function to switch channels).

Documents / Resources

| | |
|---|--|
|  | MIDIPLUS X Max Series DAW Remote Script [pdf] User Guide X Max Series DAW Remote Script, X Max Series, DAW Remote Script, Remote Script, Script |
|---|--|

References

- [User Manual](#)

Leave a comment

Your email address will not be published. Required fields are marked *

Comment *

Name

Email

Website

☐ Save my name, email, and website in this browser for the next time I comment.

Post Comment

Search:

e.g. whirlpool wrf535swhz

Search

[Manuals+](#) | [Upload](#) | [Deep Search](#) | [Privacy Policy](#) | [@manuals.plus](#) | [YouTube](#)

This website is an independent publication and is neither affiliated with nor endorsed by any of the trademark owners. The "Bluetooth®" word mark and logos are registered trademarks owned by Bluetooth SIG, Inc. The "Wi-Fi®" word mark and logos are registered trademarks owned by the Wi-Fi Alliance. Any use of these marks on this website does not imply any affiliation with or endorsement.