



# MIDIPLUS TITAN Q6 USB Audio Interface with LED Level Meter User Guide

[Home](#) » [Midiplus](#) » MIDIPLUS TITAN Q6 USB Audio Interface with LED Level Meter User Guide 

## Contents

- [1 MIDIPLUS TITAN Q6 USB Audio Interface with LED Level Meter User Guide](#)
- [2 Introduction](#)
- [3 Features](#)
- [4 Hardware Features](#)
- [5 Start Using](#)
- [6 Specifications](#)
- [7 Read More About This Manual & Download PDF:](#)
- [8 Documents / Resources](#)
  - [8.1 References](#)

## MIDIPLUS TITAN Q6 USB Audio Interface with LED Level Meter User Guide



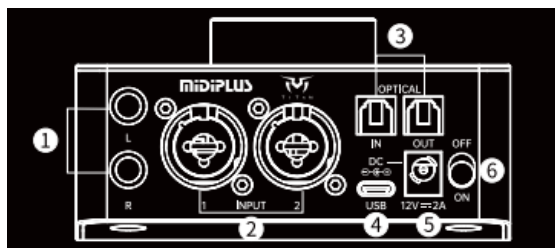
## Introduction

Thank you for choosing TITAN Q6. TITAN Q6 is a 14 in 16 out USB audio interface, with LED Level Meter, quick select button, multi-function control encoder, USB-A and USB-C hub, OTG port and 3.5mm phone jack, providing you with a high-quality experience. To fully utilize the features of TITAN 6, we recommend you install the TITAN driver. Which is compatible with Windows 10 or later and Mac OS 10.14 Mojave and later operate system. Please read this manual before you start using, to help you quickly understand the basic operations and features of TITAN Q6.

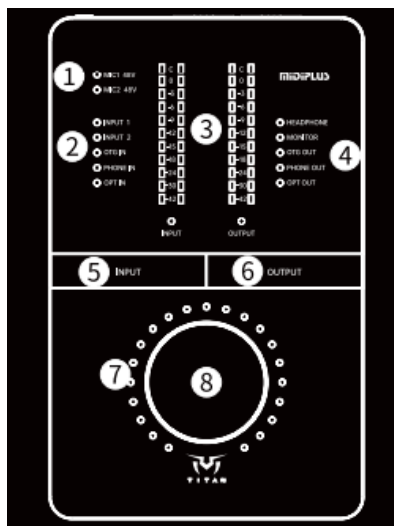
## Features

- 14in16out (4x6Analog1/0, 10x 10 Digital /0)
- 24-bit/192kHz audio resolution
- TwoXLR/TRS combo inputs with independent 48V control and gain
  - control Main output can be set as balanced or unbalanced Variable Impedance Technology Headphone output for different impedance headphone High performance/low power mode for different usage scenarios
  - Independent input/output metering for real-time level observation TG port with power supply for charging mobile devices
- USB Hub included USB-A and USB-C ports for connecting MIDI keyboard and other devices
- Bidirectional synchronization of software and hardware ® USBType-C
- Aluminum alloy housing

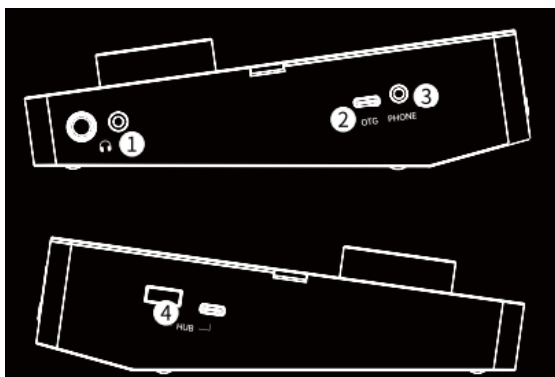
## Hardware Features



1. XLR/TRS combo input: Connect microphone via Main out
2. Connect to your monitor XLR or connect your instrument (electric guitar) and line level device via the 1/4" TRS .  
Optically/
3. Supports ADAT or S/PDIF format USB port
4. Connect to computer . DCIn: 12V/2ADC input . Power switch: Turn on/off the power



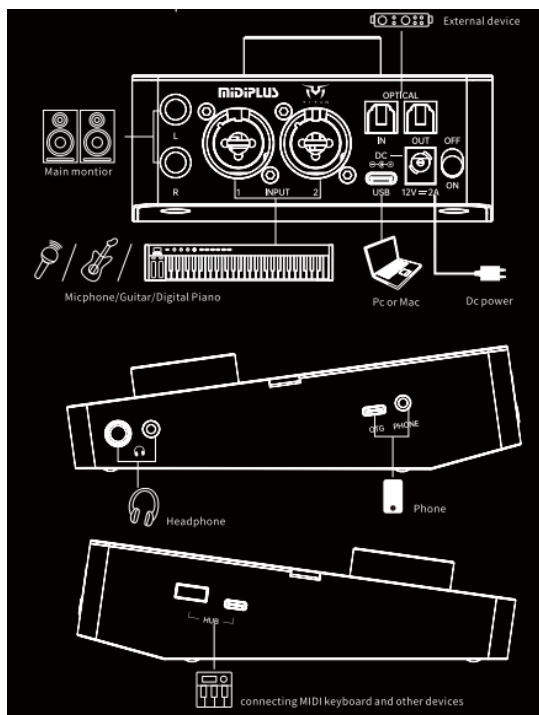
5. XLR/TRS combo input: Connect microphone via Main out: Connect to your monitor XLR or connect your instrument (electric guitar) and line level device via the 1/4" TRS . Optical/I/O: Supports ADAT or S/PDIF format USB port
6. Connect to computer . DC In: 12V/2ADC input . Power switch: Turn on/off the power on the Titan Q6 48V status: Indicate the 48V phantom power status Input selected: Indicate the selected input channel I/O level meter
7. Display the selected I/O channel level Output selected: Indicate the selected output channel Input select button:
8. Select the input channel that you want to control. 2. When the input 1 or input 2 is selected, press and hold for 3 seconds to turn on/turn off the current channel's 48V Output select button
9. Select the output channel that you want to control. 2. When the input 1 or input 2 is selected, press and hold for 3 seconds to turn on/turn off the current channel's INST RGB lamp ring: Indicate the control value of selected I/O channel Encoder: Control the input gain or output level



10. Headphone outputs: 6.35mm & 3.5mm stereo output, connect to your headphone
11. OTG port: Connect to your mobile phone via the Type-C cable
12. PHONE jack: Connect to your mobile phone via the 3.5mm TRRS cable
13. USBHUB: USB-A & USB-C port, connect your MIDI keyboard and other device

## Start Using

1. Connecting Connect the TITAN Q6 to computer by using the included USB cable and DC cable
2. Installation  
Go to <http://midiplus.com/support.aspx?id=1> download and install the TITAN Q6 driver
3. Setting the default sound device Windows: Go to Settings>System>Sound and then selecting the TITAN Q6 as your device for Input and Output macOS: Go to System preferences>Sound and then selecting the TITAN Q6 as your device for Input and Output
4. Connection Example




## Specifications

Model	TITAN Q6
Bit depth/Sample rate	24-bit/192kHz
I/O	2 × XLR/TRS Combo input 2 × 6.35mm TRS output 2 × Optical I/O 1 × 3.5mm TRRS phone jack 1 × OTG port 1 × USB A Hub 1 × USB C Hub 1 × 6.35mm Headphone output 1 × 3.5mm Headphone output 1 × 12V/2A DC in
Buttons	1 × Input select button 1 × Output select button
Encoder	1 × Input/output Control Encoder
Accessories	1 × TITAN Q6 1 × USB A-C 2m 1 × USB C-C 2m 1 × USB C-C (OTG) 1.5m 1 × 3.5mm TRRS 1.5m 1 × Optical cable, 1m 1 × DC12V/2A Power Adapter 1 × User manual 1 × 3.5mm to 6.35mm adapter

***Read More About This Manual & Download PDF:***

---

## Documents / Resources

	<p><a href="#">MIDIPLUS TITAN Q6 USB Audio Interface with LED Level Meter</a> [pdf] User Guide</p> <p>TITAN Q6 USB Audio Interface with LED Level Meter, TITAN Q6, USB Audio Interface with LED Level Meter, Audio Interface with LED Level Meter, Interface with LED Level Meter, LED Level Meter, Level Meter</p>
---	---

## References

- [User Manual](#)