

midiox USB-MIDI interface User Guide

[Home](#) » [midiox](#) » midiox USB-MIDI interface User Guide 

midiox USB-MIDI interface User Guide

Contents

- [1 LIVEN Ambient Ø Update Guide](#)
- [2 Preparing to update](#)
- [3 Updating the firmware](#)
- [4 Troubleshooting](#)
- [5 Documents / Resources](#)
 - [5.1 References](#)

LIVEN Ambient Ø Update Guide

The update process of the Ambient Ø requires a **USB-MIDI interface**.

USB-MIDI interfaces that we confirmed to operate properly:

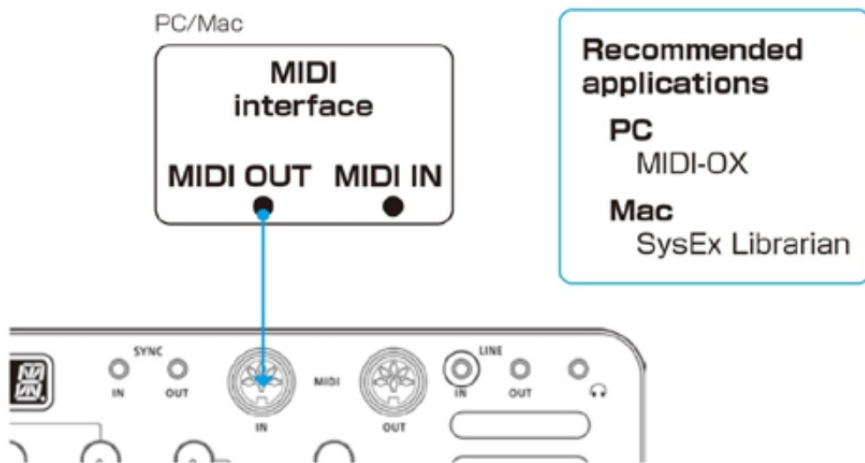
Roland UM-ONE mk2, Yamaha UX-16, iConnectivity mio

You can use a USB audio interface with MIDI ports or an electronic musical instrument with USB-MIDI functionality (Only devices that support the transfer of MIDI system exclusive messages, such as SmpITrek).

Preparing to update

Follow the instruction manual for your USB-MIDI interface, connect it to your PC/Mac, and configure the USB-MIDI settings.

Then, connect the **MIDI OUT of the USB-MIDI interface** to the **MIDI IN of the Ambient Ø** with a MIDI cable.



You will also need to download and install the following application on your PC/Mac.

[for PC]

Download and install the **MIDI-OX** application from the URL below. <http://www.midiox.com/>

[for Mac]

Download and install the **SysEx Librarian** application from the URL below.

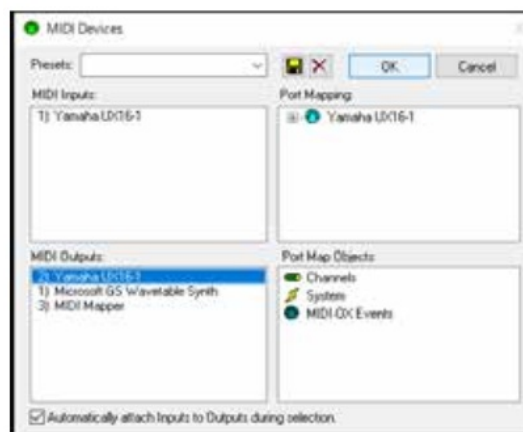
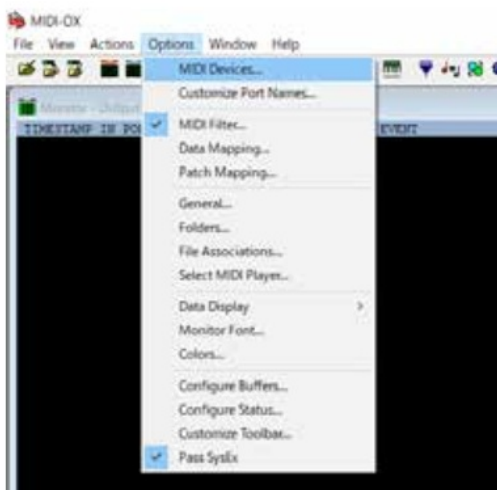
<https://www.snoize.com/SysExLibrarian/>

[Note] Use new batteries or an AC adapter.. Never interrupt the power during a firmware update..

Updating the firmware

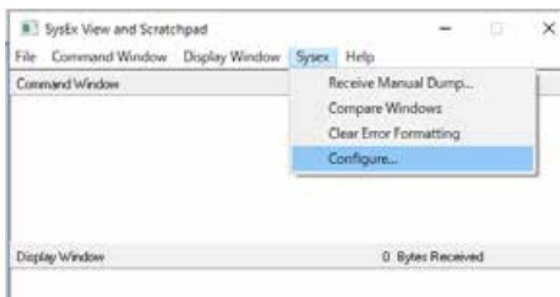
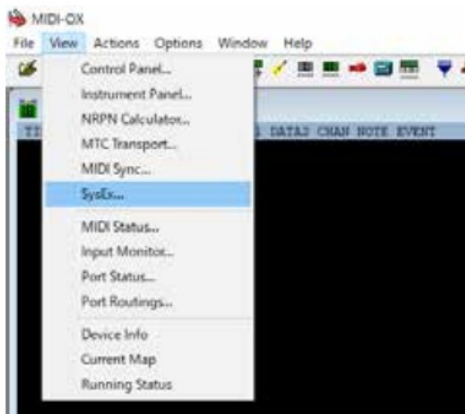
[for PC]

1. Press and hold the **shift** button + the POWER switch to turn on the Ambient Ø.
The Ambient Ø starts and **UPDT** appears on the display.
2. Double-click the **MIDI-OX** application to launch it.
3. From the **Options** menu, select **MIDI Devices...** and select the USB- MIDI interface connected to your PC.

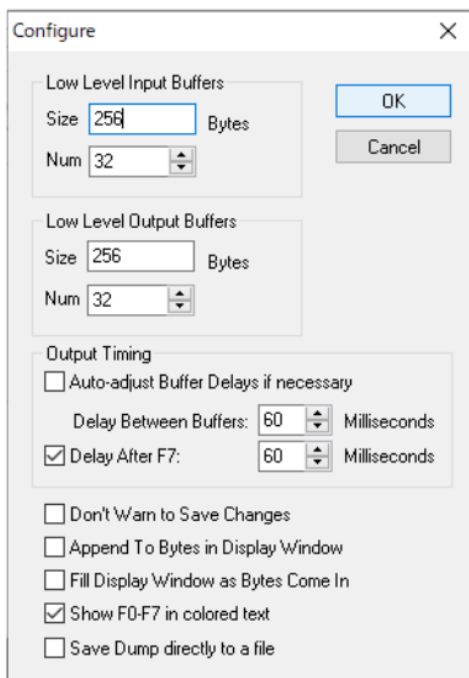


4. From the **View** menu, select **SysEx...** and select **Configure...** from the **SysEx** menu in the newly opened

window.



5. Set the **Configure** settings as follows.



6. From the **File** menu, select **Send Sysex File...** and select the firmware file **LIVEN_AMBIENT_SYSTEM_1_x_xx.syx** then click **OK**.



Data transmission begins.

RCV appears on the Ambient Ø display and the step LEDs indicate the progress of data transmission (transmission is complete when all are lit).

7. After the transmission is complete, press the **OK** button on the Ambient Ø to execute the update.
The step LED lights up to indicate progress.

8. After the transmission is complete, press the **OK** button on the Ambient Ø to execute the update.
The step LED lights up to indicate progress.

When the update is successful, **OK** is displayed (if there is an error, the error code on P. 5 is displayed).

9. Restart the Ambient Ø.

[for Mac]

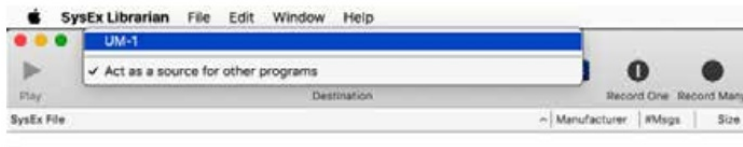
1. Press and hold the **shift** button + the POWER switch to turn on the Ambient Ø.

The Ambient Ø starts and **UPDT** appears on the display.

2. Double-click the Firmware file **LIVEN_AMBIENT_SYSTEM_1_x_xx.syx**.

The **SysEx** Librarian application starts up.

3. Click **Act as a source for other programs**, then select the USB-MIDI interface connected to your Mac.



4. Click Play▶.

Data transmission begins.

RCV appears on the Ambient Ø display and the step LEDs indicate the progress of data transmission (transmission is complete when all are lit).

5. After the transmission is complete, press the **OK** button on the Ambient Ø to execute the update.

The step LED lights up to indicate progress.

When the update is successful, **OK** is displayed (if there is an error, the error code on P. 5 is displayed).

6. Restart the Ambient Ø.

Troubleshooting

Error codes

System related

ER.10 : System error

ER.11: Low battery

Data Receiving related

ER.20 : Data receiving error

ER.21 : Invalid data

ER.22 : No need to update (Boot)

Update related

ER.30 : Update failed

After updating, the system status can be checked with the following button LEDs.

(Green for normal, red for abnormal)

PTN button: Preset, 1/3 button: Main, 2/4 button: Boot

If the firmware update fails, adjust the buffer size and transmission speed, and transmit the syx file again.

[for PC]

In the Configure menu, double the Num and Size values for **Low Level Output Buffers** and try transmitting it again.

If it does not work, double the Delay Between Buffers and Delay After F7 values in the **Output Timing** section.

[for Mac]

In the Preferences, try lowering the **Transmit Speed** tab. If it does not work, try reducing the speed further.

Documents / Resources

LIVEN Ambient @Update Guide

The greater ambition of the Ambient @Update is to **enable** the user to:

- Upgrade the software to the latest version
- Upgrade the hardware to the latest version
- Upgrade the software to the latest version
- Upgrade the hardware to the latest version

Preparing to update

Before the update, the user should:

- Backup the data
- Backup the data
- Backup the data
- Backup the data

```

graph LR
    Data[Data] --> Update[Update]
    Update --> Backup[Backup]
    Backup --> Restore[Restore]
    Restore --> Data
  
```

The user must read the manual and install the following application on your PC:

(For PC)

Download and install the **midiox USB-MIDI interface** from the PC store:

[midiox USB-MIDI interface](#)

(For Mac)

Download and install the **midiox USB-MIDI interface** from the Mac store:

[midiox USB-MIDI interface](#)

midiox USB-MIDI interface [pdf] User Guide

USB-MIDI interface, USB-MIDI interface, interface

References

- [!\[\]\(ce77bba2916ff045bdb9f4584b191293_img.jpg\) MIDIOX](#)
- [User Manual](#)

[Manuals+](#), [Privacy Policy](#)

This website is an independent publication and is neither affiliated with nor endorsed by any of the trademark owners. The "Bluetooth®" word mark and logos are registered trademarks owned by Bluetooth SIG, Inc. The "Wi-Fi®" word mark and logos are registered trademarks owned by the Wi-Fi Alliance. Any use of these marks on this website does not imply any affiliation with or endorsement.