



mideahk MW-07-12CRF8B Window Type Air Conditioners Owner's Manual

[Home](#) » [mideahk](#) » mideahk MW-07-12CRF8B Window Type Air Conditioners Owner's Manual 

Contents

- [1 mideahk MW-07-12CRF8B Window Type Air Conditioners](#)
- [2 Product Information](#)
- [3 Product Usage Instructions](#)
- [4 Remote Controller Specifications](#)
- [5 Quick Start Guide](#)
- [6 Handling the Remote Controller](#)
 - [6.1 Inserting and Replacing Batteries](#)
- [7 Buttons and Functions](#)
- [8 Remote Screen Indicators](#)
- [9 How to Use Basic Functions](#)
- [10 How to Use Advanced Functions](#)
- [11 Documents / Resources](#)



mideahk MW-07-12CRF8B Window Type Air Conditioners



Product Information

The product is an air conditioner with a remote controller. It comes with a user manual that provides important instructions for operating the air conditioning unit. The remote controller has various buttons and functions for controlling the air conditioner's settings.

Product Usage Instructions

Handling the Remote Controller

1. Inserting and Replacing Batteries:

- Slide the back cover of the remote control downward to expose the battery compartment.
- Insert the batteries, ensuring that the (+) and (-) ends of the batteries match the symbols inside the battery compartment.
- Slide the battery cover back into place.

2. Battery Notes:

- If you don't plan on using the device for more than 2 months, remove the batteries.
- Dispose of batteries according to local laws for proper disposal.
- Do not dispose of batteries as unsorted municipal waste.

Buttons and Functions

Before using the air conditioner, familiarize yourself with the remote control's buttons and functions. The following are the key functions:

- **ON/OFF:** Turns the unit on or off.
- **SET:** Scrolls through operation functions such as Sleep, Follow Me, AP mode. The selected symbol will flash on the display area. Press OK button to confirm.
- **TEMP:** Adjusts the temperature settings.
- **FAN SPEED:** Selects fan speeds in the following order: AUTO, LOW, MED, HIGH. Holding this button down for 2 seconds activates the Silence feature.
- **SWING:** Starts and stops the horizontal louver movement. Hold down for 2 seconds to initiate vertical louver auto swing feature (some units).

- **MODE:** Scrolls through operation modes: AUTO, COOL, DRY, HEAT, FAN. Note that HEAT mode is not supported by cooling-only appliances.
- **ECO/GEAR:** Enters the energy-efficient mode in a sequence of ECO, GEAR (75%), GEAR (50%), Previous setting mode. Press this button to cycle through the modes.
- **OK:** Confirms the selected functions.
- **TIMER:** Sets the timer to turn the unit on or off.
- **FRESH:** Starts and stops the Fresh feature.
- **CLEAN:** Starts and stops the Clean function.
- **LED:** Turns the indoor unit's LED display and air conditioner buzzer on or off (model-dependent) to create a comfortable and quiet environment.

For detailed instructions on using the air conditioner's basic and advanced functions, refer to the How to Use Basic Functions and How to Use Advanced Functions sections in the user manual.

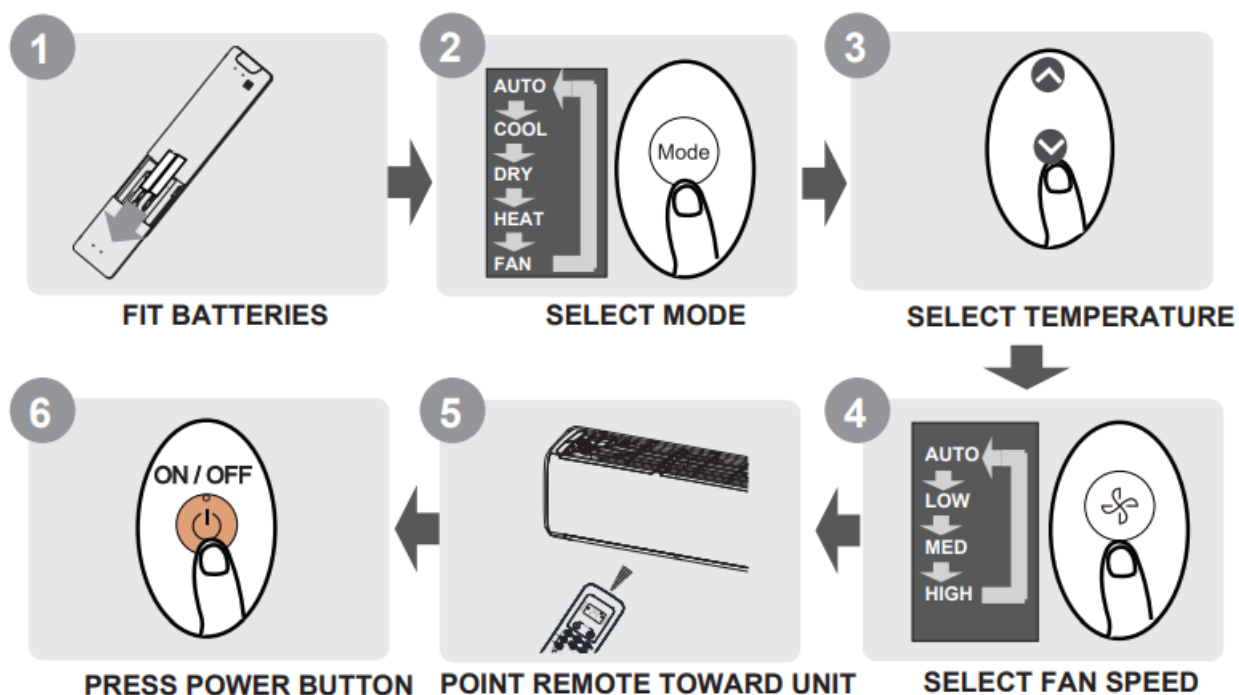
SPECIAL NOTE

- Button designs on your unit may differ slightly from the example shown.
- If the indoor unit does not have a particular function, pressing that function's button on the remote control will have no effect.
- When there are wide differences between "Remote controller Manual" and "USER'S
- MANUAL" on function description, the description of "USER'S MANUAL" shall prevail.

Remote Controller Specifications

Model :RG10A1(F/H/G)/BGEF
Rated Voltage:3.0V(Dry batteries R03/LR03×2)
Signal Receiving Range:8m
Environment:-5°C~60°C(23°F~140°F)

Quick Start Guide



NOT SURE WHAT A FUNCTION DOES?

Refer to the How to Use Basic Functions and How to Use Advanced Functions sections of this manual for a detailed description of how to use your air conditioner.

Handling the Remote Controller

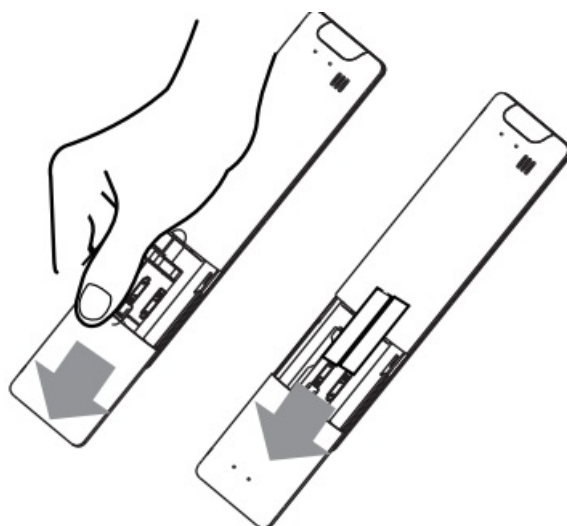
Inserting and Replacing Batteries

Your air conditioning unit may come with two batteries(some units). Put the batteries in the remote control before use.

1. Slide the back cover from the remote control downward, exposing the battery compartment.
2. Insert the batteries, paying attention to match up the (+) and (-) ends of the batteries with the symbols inside the battery compartment.
3. Slide the battery cover back into place.

BATTERY NOTES

For optimum product performance:



- Do not mix old and new batteries, or batteries of different types.
- Do not leave batteries in the remote control if you don't plan on using the device for more than 2 months.

BATTERY DISPOSAL

Do not dispose of batteries as unsorted municipal waste. Refer to local laws for proper disposal of batteries.

TIPS FOR USING REMOTE CONTROL

- The remote control must be used within 8 meters of the unit.
- The unit will beep when remote signal is received.
- Curtains, other materials and direct sunlight can interfere with the infrared signal receiver.
- Remove batteries if the remote will not be used more than 2 months.

NOTES FOR USING REMOTE CONTROL

The device could comply with the local national regulations.

In Canada, it should comply with CAN ICES-3(B)/NMB-3(B).

In USA, this device complies with part 15 of the FCC Rules. Operation is subject to the following two conditions:

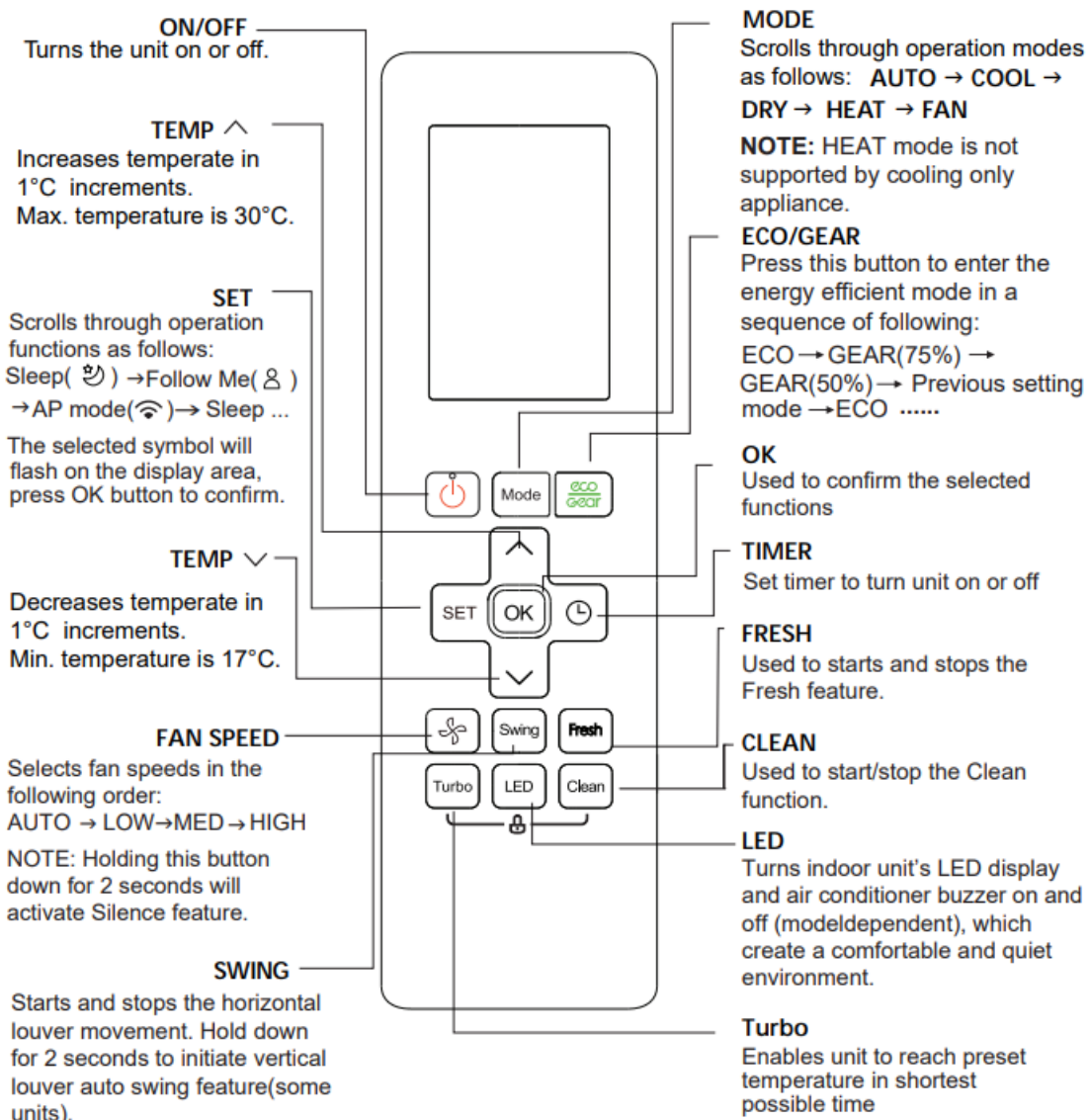
1. This device may not cause harmful interference,
and
2. this device must accept any interference received, including interference that may cause undesired operation.

This equipment has been tested and found to comply with the limits for a Class B digital device, pursuant to part 15 of the FCC Rules. These limits are designed to provide reasonable protection against harmful interference in a residential installation. This equipment generates, uses and can radiate radio frequency energy and, if not installed and used in accordance with the instructions, may cause harmful interference to radio communications. However, there is no guarantee that interference will not occur in a particular installation. If this equipment does cause harmful interference to radio or television reception, which can be determined by turning the equipment off and on, the user is encouraged to try to correct the interference by one or more of the following measures:

- Reorient or relocate the receiving antenna.
- Increase the separation between the equipment and receiver.
- Connect the equipment into an outlet on a circuit different from that to which the receiver is connected.
- Consult the dealer or an experienced radio/TV technician for help.
- Changes or modifications not approved by the party responsible for compliance could void user's authority to operate the equipment.

Buttons and Functions

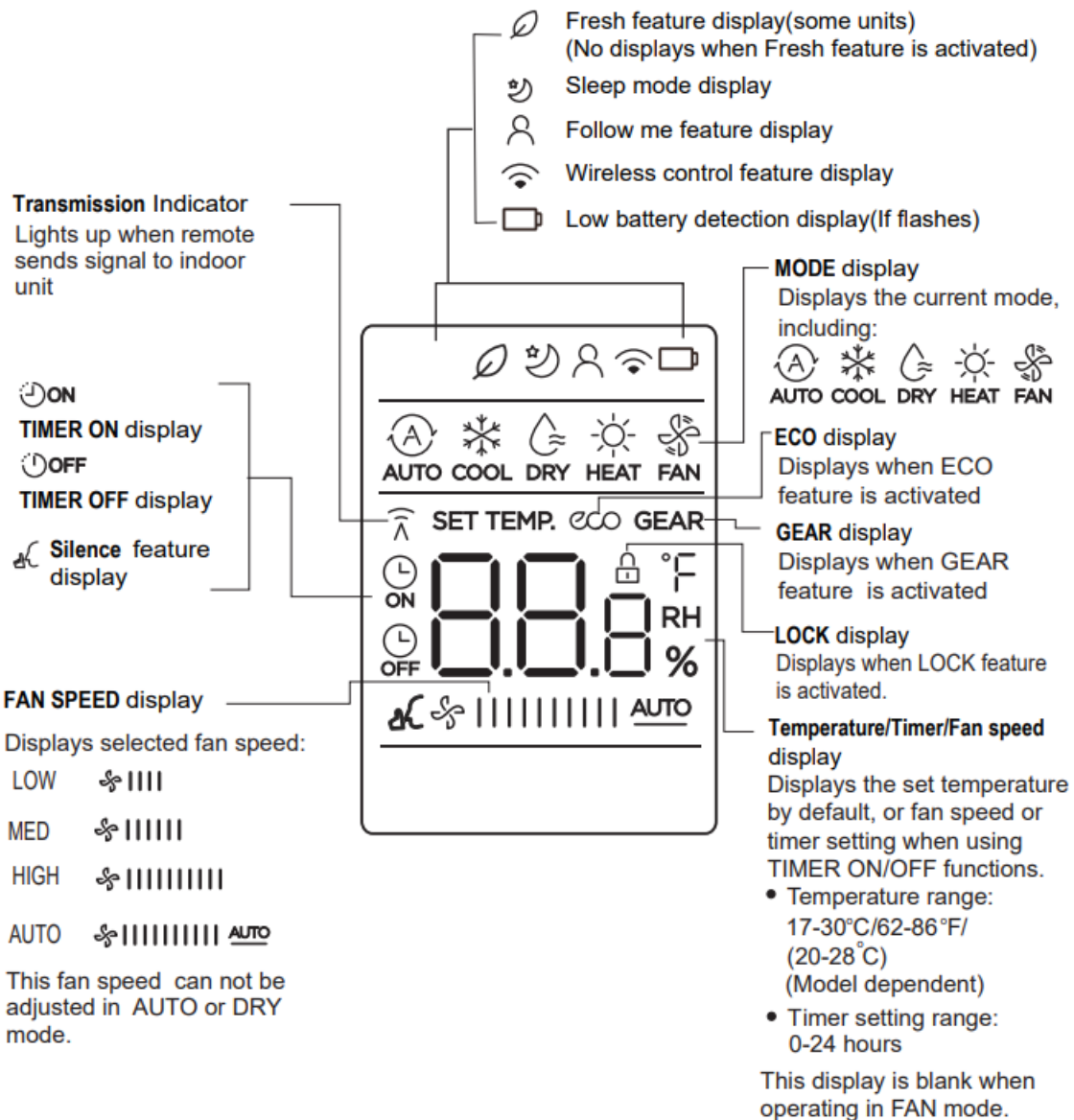
Before you begin using your new air conditioner, make sure to familiarize yourself with its remote control. The following is a brief introduction to the remote control itself. For instructions on how to operate your air conditioner, refer to the How to Use Basic Functions section of this manual.



Model: RG10A1(F/H/G)/BGEF

Remote Screen Indicators

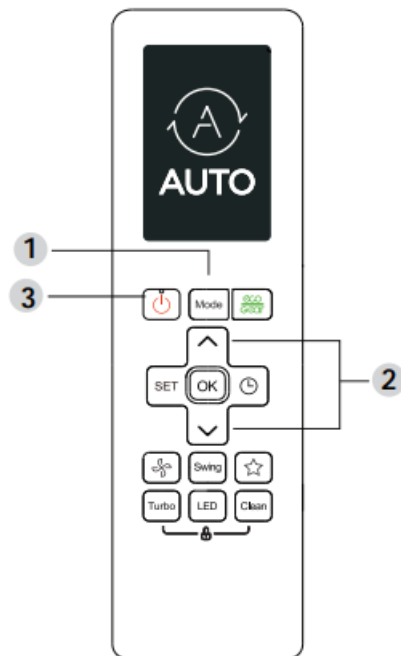
Information are displayed when the remote controller is power up.



How to Use Basic Functions

Basic operation

ATTENTION! Before operation, please ensure the unit is plugged in and power is available.



COOL Mode

1. Press the MODE button to select COOL mode.
2. Set your desired temperature using the TEMP \wedge or \vee TEMP button.
3. Press FAN button to select the fan speed: AUTO, LOW, MED or HIGH.
4. Press the ON/OFF button to start the unit.

SETTING TEMPERATURE

The operating temperature range for units is 17-30°C (62-86°F)/20-28 C. You can increase or decrease the set temperature in 1°C (1°F) increments.

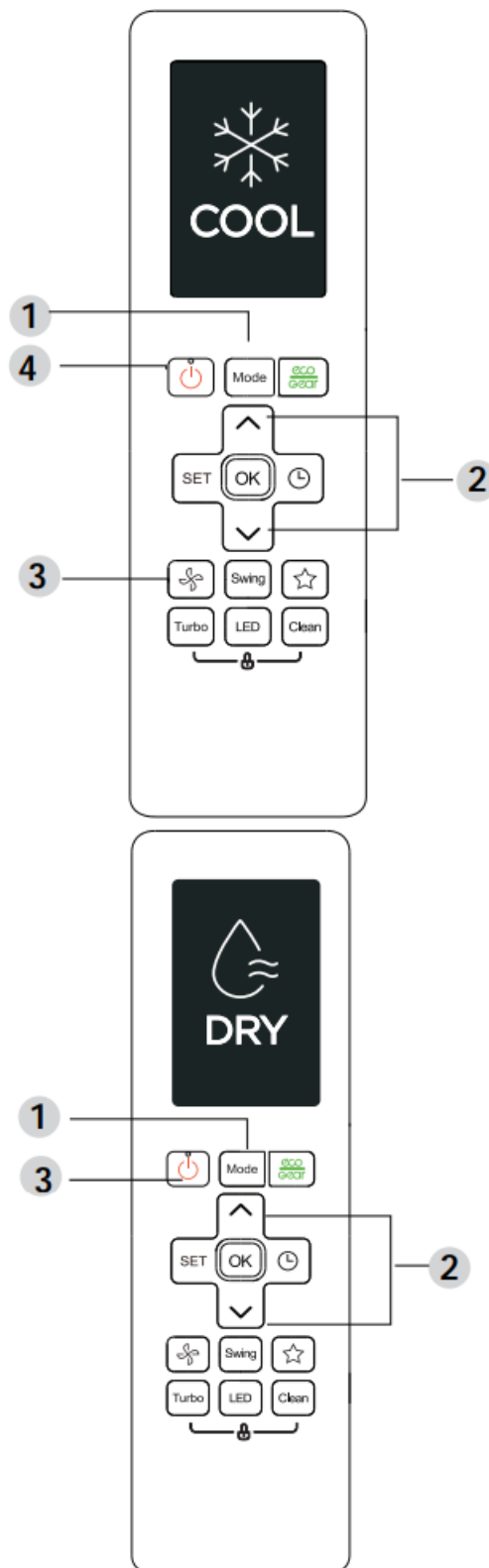
AUTO Mode

In AUTO mode, the unit will automatically select the COOL, FAN, or HEAT operation function based on the set temperature.

1. Press the MODE button to select AUTO.
2. Set your desired temperature using the TEMP or TEMP button.
Set your desired temperature using the TEMP or TEMP button.
3. Press the ON/OFF button to start the unit.

Press the ON/OFF button to start the unit.

NOTE: FAN SPEED can't be set in AUTO mode.

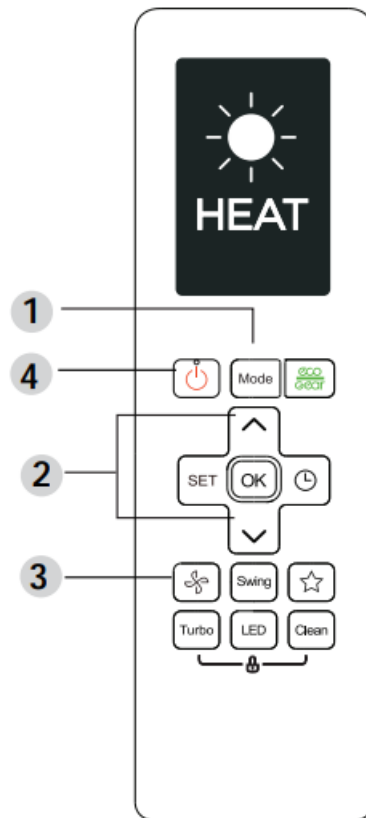


FAN Mode

1. Press the MODE button to select FAN mode.
2. Press FAN button to select the fan speed: AUTO, LOW, MED or HIGH.
3. Press the ON/OFF button to start the unit.

NOTE: You can't set temperature in FAN mode.

As a result, your remote control's LCD screen will not display temperature.



DRY Mode (dehumidifying)

1. Press the MODE button to select DRY.
2. Set your desired temperature using the TEMP ^ or TEMP V button.
3. Press the ON/OFF button to start the unit.

NOTE: FAN SPEED cannot be changed in DRY mode.

HEAT Mode

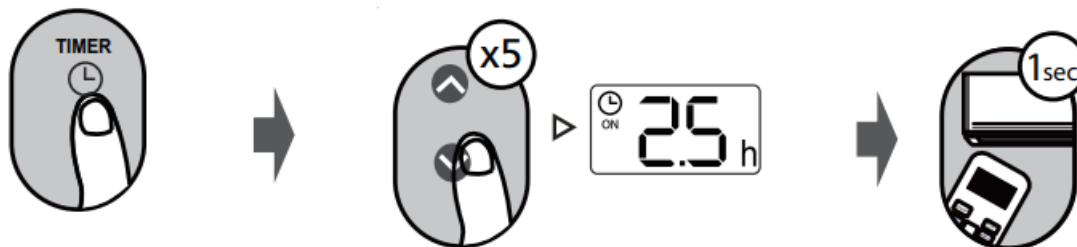
1. Press the MODE button to select HEAT mode.
2. Set your desired temperature using the TEMP ^ or TEMP V button.
3. Press FAN button to select the fan speed: AUTO, LOW, MED or HIGH.
4. Press the ON/OFF button to start the unit.

NOTE: As outdoor temperature drops, the performance of your unit's HEAT function may be affected. In such instances, we recommend using this air conditioner in conjunction with other heating appliances.

Setting the TIMER

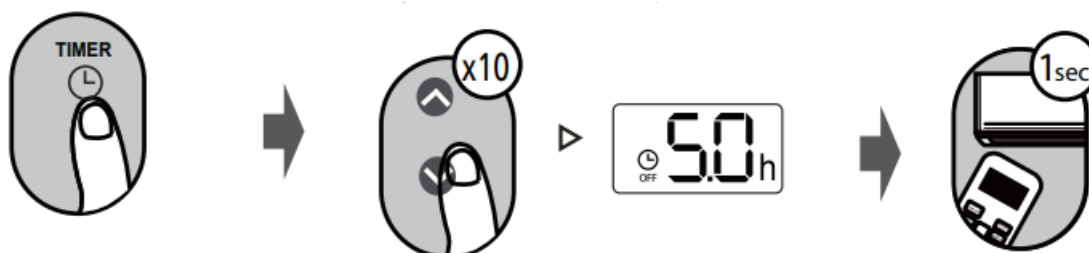
TIMER ON/OFF – Set the amount of time after which the unit will automatically turn on/off.

TIMER ON setting



- Press TIMER button to initiate the ON time sequence.
- Press Temp. up or down button for multiple times to set the desired time to turn on the unit.
- Point remote to unit and wait 1 sec, the TIMER ON will be activated

TIMER OFF setting



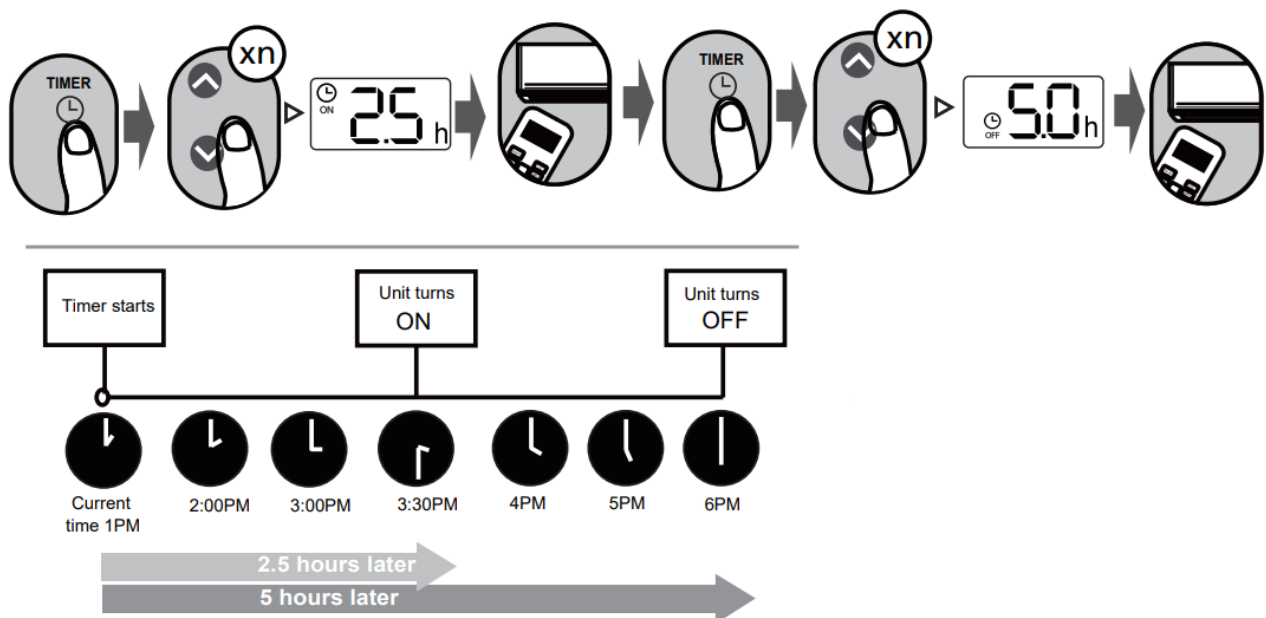
1. Press TIMER button to initiate the OFF time sequence.
2. Press Temp. up or down button for multiple times to set the desired time to turn off the unit
3. Point remote to unit and wait 1sec, the TIMER OFF will be activated.

NOTE:

1. When setting the TIMER ON or TIMER OFF, the time will increase by 30 minutes increments with each press, up to 10 hours. After 10 hours and up to 24, it will increase in 1 hour increments. (For example, press 5 times to get 2.5h, and press 10 times to get 5h,) The timer will revert to 0.0 after 24.
2. Cancel either function by setting its timer to 0.0h.

TIMER ON & OFF setting(example)

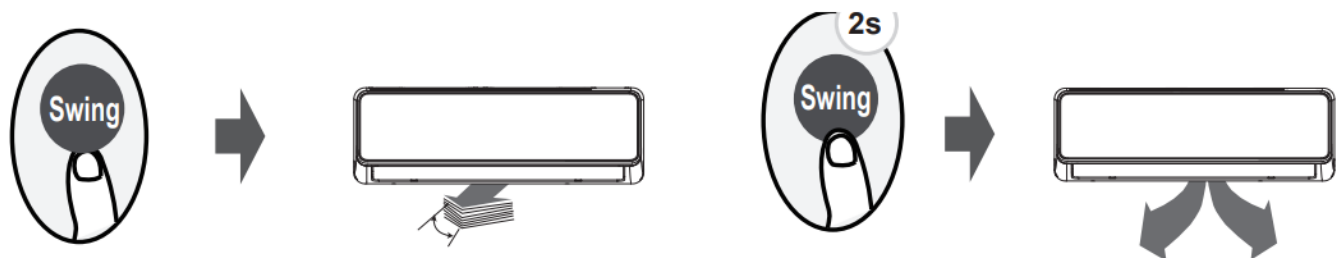
Keep in mind that the time periods you set for both functions refer to hours after the current time.



How to Use Advanced Functions

Swing function

Press Swing button



1. The horizontal louver will swing up and down automatically when pressing Swing button.
Press again to make it stop.
2. Keep pressing this button more than 2 seconds, the vertical louver swing function is activated. (Model dependent)

LED DISPLAY

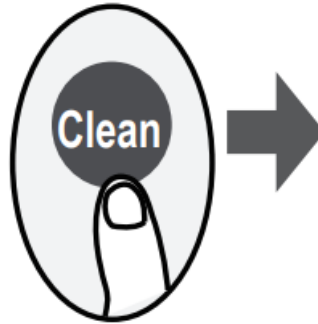
1. Press this button to turn on and turn off the display on the indoor unit.



2. Keep pressing this button more than 5 seconds, the indoor unit will display the actual room temperature. Press more than 5 seconds again will revert back to display the setting temperature.

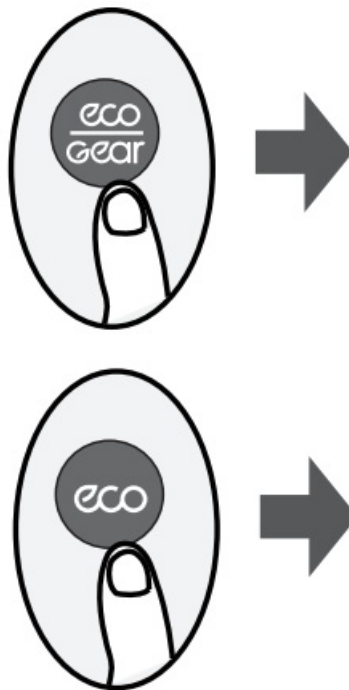
Clean Function

Press CLEAN button



Airborne bacteria can grow in the moisture that condenses around heat exchanger in the unit. With regular use, most of this moisture is evaporated from the unit. By pressing the CLEAN button, your unit will clean itself automatically. After cleaning, the unit will turn off automatically. Pressing the CLEAN button mid-cycle will cancel the operation and turn off the unit. You can use CLEAN as often as you like. Note: You can only activate this function in COOL or DRY mode.

ECO/GEAR function



1. Press this button to enter the energy efficient mode in a sequence of following: ECO GEAR(75%) GEAR(50%) Previous setting mode ECO.

Note: This function is only available under COOL mode.

2. Press this button to enter the energy efficient mode .

ECO operation:

Under cooling mode, press this button, the remote controller will adjust the temperature automatically to 24 C/75 F, fan speed of Auto to save energy (only when the set temperature is less than 24 C/75 F). If the set temperature is above 24 C/75 F, press the ECO button, the fan speed will change to Auto, the set temperature will remain unchanged.

NOTE:

Pressing the ECO button, or modifying the mode or adjusting the set temperature to less than 24 C/75 F will stop ECO operation.

Under ECO operation, the set temperature should be 24 C/75 F or above, it may result in insufficient cooling. If you feel uncomfortable, just press the ECO button again to stop it.

GEAR operation(some units):

Press the ECO/GEAR button to enter the GEAR operation as following:

75%(up to 75% electrical energy consumption)



50%(up to 50% electrical energy consumption)



Previous setting mode.

Under GEAR operation, the display on the remote controller will alternate between electrical energy consumption and set temperature.

Silence function



Keep pressing Fan button for more than 2 seconds to activate/disable Silence function(some units).

Due to low frequency operation of compressor, it may result in insufficient cooling and heating capacity. Press ON/OFF, Mode, Sleep, Turbo or Clean button while operating will cancel silence function.

FP function

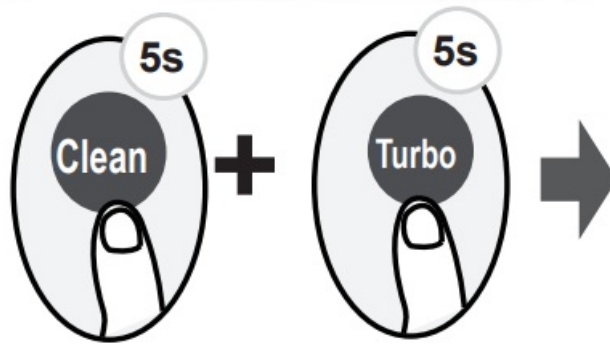
Press this button 2 times during one second under HEAT Mode and setting temperature of 17 C/62 F or 20 C(for models RG10A10(F/H/G)/BGEF and RG10A11(F/H/G)/BGEF).

The unit will operate at high fan speed (while compressor on) with temperature automatically set to 8 C/46 F.

Note: This function is for heat pump air conditioner only.

Press this button 2 times during one second under HEAT Mode and setting temperature of 17 C/62 F or 20 C(for models RG10A10(F/H/G)/BGEF and and RG10A11(F/H/G)/BGEF) to activate FP function. Press On/Off, Sleep, Mode, Fan and Temp. button while operating will cancel this function.

LOCK function



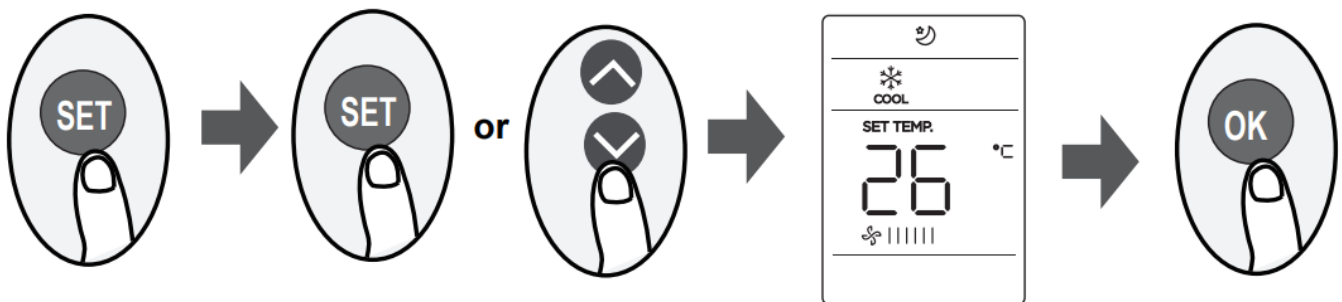
Press together Clean button and Turbo button at the same time more than 5 seconds to activate Lock function. All buttons will not response except pressing these two buttons for two seconds again to disable locking.

TURBO Function

Press TURBO button

When you select Turbo feature in COOL mode, the unit will blow cool air with strongest wind setting to jump-start the cooling process. When you select Turbo feature in HEAT mode, for units with Electric heat elements, the Electric HEATER will activate and jump-start the heating process.

SET function



1. Press the SET button to enter the function setting, then press SET button or TEMP up or TEMP down button to select the desired function. The selected symbol will flash on the display area, press the OK button to confirm.
2. To cancel the selected function, just perform the same procedures as above.

Press the SET button to scroll through operation functions as follows:

Fresh*() → **Sleep**() → **Follow Me**() → **AP mode**()

3. If your remote controller has Fresh button, you can not use the SET button to select the Fresh feature.

FRESH function (some units) :When the FRESH function is initiated, the Ionizer/Plasma Dust Collector(depending on models) is energized and will help to remove pollen and impurities from the air.

Sleep function(E)) : The SLEEP function is used to decrease energy use while you sleep (and don't need the same temperature settings to stay comfortable). This function can only be activated via remote control. For the detail, see " sleep operation" in " USER'S MANUAL"

Note: The SLEEP function is not available in FAN or DRY mode

Follow me function 8):

The FOLLOW ME function enables the remote control to measure the temperature at its current location and send this signal to the air conditioner every 3 minutes interval.

When using AUTO, COOL or HEAT modes, measuring ambient temperature from the remote control(instead of from the indoor unit itself) will enable the air conditioner to optimize the temperature around you and ensure maximum comfort.

NOTE: Press and hold Turbo button for seven seconds to start/stop memory feature of Follow Me function.

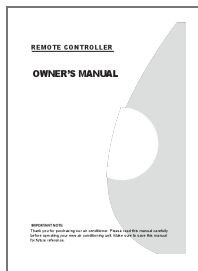
- If the memory feature is activated, “On ” displays for 3 seconds on the screen.
- If the memory feature is stopped, “OF” displays for 3 seconds on the screen.
- While the memory feature is activated, press the ON/OFF button, shift the mode or power failure will not cancel the Follow me function.

AP function(S')(some units) :

Choose AP mode to do wireless network configuration. For some units, it doesn't work by pressing the SET button. To enter the AP mode, continuously press the LED button seven times in 10 seconds.

The design and specifications are subject to change without prior notice for product improvement. Consult with the sales agency or manufacturer for details.

Documents / Resources

	<p>mideaahk MW-07-12CRF8B Window Type Air Conditioners [pdf] Owner's Manual MW-07-12CRF8B Window Type Air Conditioners, MW-07-12CRF8B, Window Type Air Conditioners, Type Air Conditioners, Air Conditioners, Conditioners</p>
--	--

Manuals+.