

Midea
RG10A(B2S)/
BGEF Remote
Controller



Midea RG10A(B2S)/BGEF Remote Controller Owner's Manual

[Home](#) » [Midea](#) » Midea RG10A(B2S)/BGEF Remote Controller Owner's Manual 

Contents

- 1 Midea RG10A(B2S)/BGEF Remote Controller
- 2 Product Usage Instructions
- 3 FAQ
- 4 Remote Controller Specifications
- 5 Quick Start Guide
- 6 Handling the Remote Controller
- 7 FCC STATEMENT
- 8 Buttons and Functions
- 9 Remote Screen Indicators
- 10 How to Use Basic Functions
- 11 Setting the TIMER
- 12 How to Use Advanced Functions
- 13 Documents / Resources
 - 13.1 References



Midea RG10A(B2S)/BGEF Remote Controller



Product Usage Instructions

- Your air conditioning unit may come with two batteries. Follow these steps to insert or replace the batteries in the remote control:
- Slide the back cover downward to expose the battery compartment.
- Insert the batteries, ensuring the correct alignment of the (+) and (-) ends.
- Slide the battery cover back into place.
- To maintain optimal product performance:
- Avoid mixing old and new batteries or batteries of different brands.
- Remove batteries if not using the remote control for more than 2 months.
- Before operating your air conditioner, familiarize yourself with the remote control functions:

FAQ

- **Q:** How do I know if the remote control is working properly?
- **A:** Ensure the batteries are inserted correctly and have sufficient power. Point the remote towards the unit and press buttons to check functionality. If issues persist, refer to the troubleshooting section of the manual.

IMPORTANT NOTE

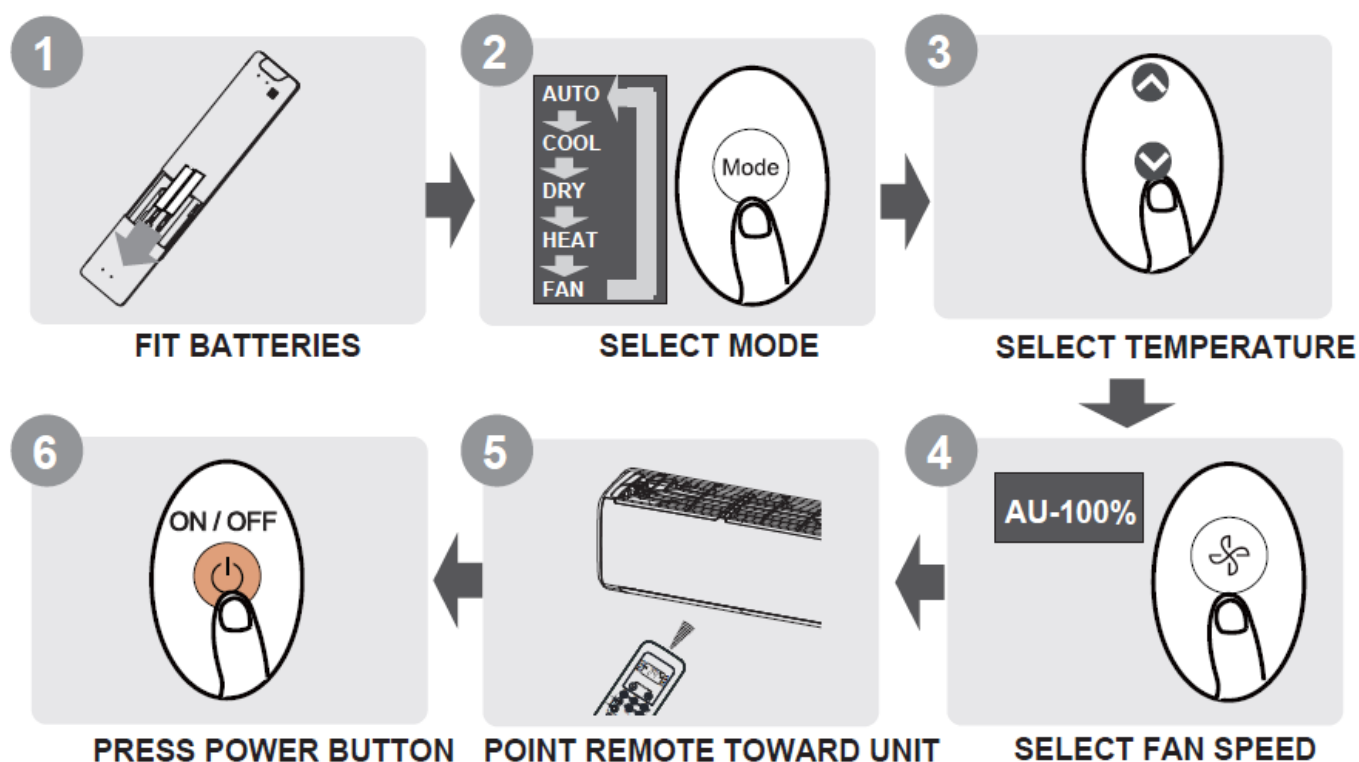
Thank you for purchasing our air conditioner. Please read this manual carefully before operating your new air

conditioning unit. Make sure to save this manual for future reference.

Remote Controller Specifications

Model	RG10A(B2S)/BGEF, RG10A(B2S)/BGEFU1, RG10A1(B2S)/BGEF, RG10A2(B2S)/BGEFU1, RG10A2(B2S)/BGCEFU1, RG10A2(B2S)/BGCEF, RG10A10(B2S)/BGEF.
Rated Voltage	3.0V(Dry batteries R03/LR03×2)
Signal Receiving Range	8m
Environment	-5°C~60°C(23°F~140°F)

Quick Start Guide



NOT SURE WHAT A FUNCTION DOES?

Refer to the How to Use Basic Functions and How to Use Advanced Functions sections of this manual for a detailed description of how to use your air conditioner.

SPECIAL NOTE

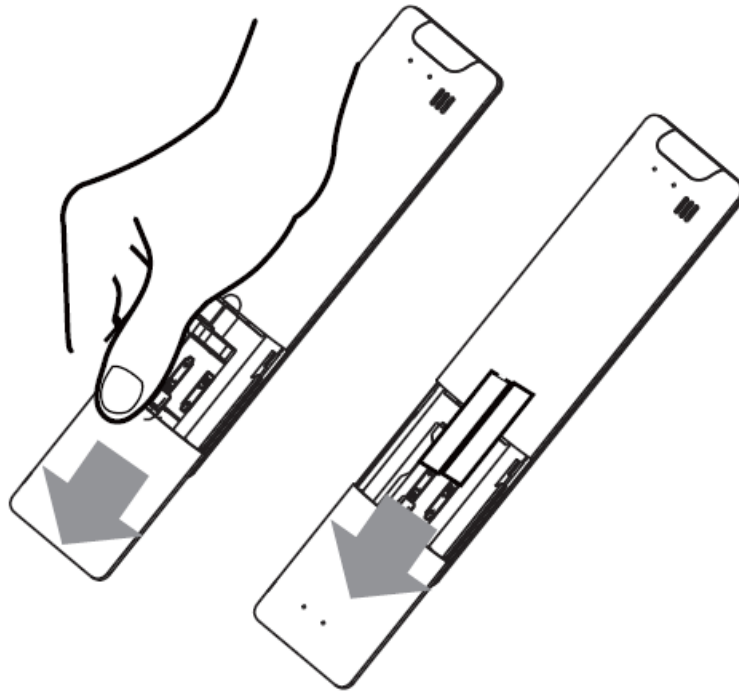
- Button designs on your unit may differ slightly from the example shown.
- If the indoor unit does not have a particular function, pressing that function's button on the remote control will have no effect.
- When there are wide differences between "Remote Controller Manual" and "USER'S MANUAL" on the function description, the description of "USER'S MANUAL" shall prevail.

Handling the Remote Controller

Inserting and Replacing Batteries

Your air conditioning unit may come with two batteries(some units). Put the batteries in the remote control before use.

1. Slide the back cover from the remote control downward, exposing the battery compartment.
2. Insert the batteries, paying attention to match up the (+) and (-) ends of the batteries with the symbols inside the battery compartment.
3. Slide the battery cover back into place.



Remote Control

- Direct sunlight can interfere with the infrared signal receiver.
- There must be a clear line of sight between the remote and the appliance.
- If the signals from the remote control happen to control another appliance, move the appliance to another location or contact customer service.

Battery Disposal

- Do not dispose of batteries as unsorted municipal waste. Refer to local laws for proper disposal of batteries.
- Batteries may have a chemical symbol at the bottom of the disposal icon. This chemical symbol means that the battery contains a heavy metal that exceeds a certain concentration.
- An example is Pb: Lead ($>0.004\%$).
- Appliances and used batteries must be treated in a specialized facility for reuse, recycling, and recovery. By ensuring correct disposal, you will help avoid possible negative consequences for the environment and human health.



Battery Performance

For optimal product performance:

- Do not mix old and new batteries or batteries of different brands.
- Do not leave batteries in the remote control if you don't plan on using the device for more than 2 months.

FCC STATEMENT

Notes For Using Remote Control

The device could comply with local and national regulations.

In Canada, it should comply with CAN ICES-3(B)/NMB-3(B).

In the USA, this device complies with part 15 of the FCC Rules. Operation is subject to the following two conditions:

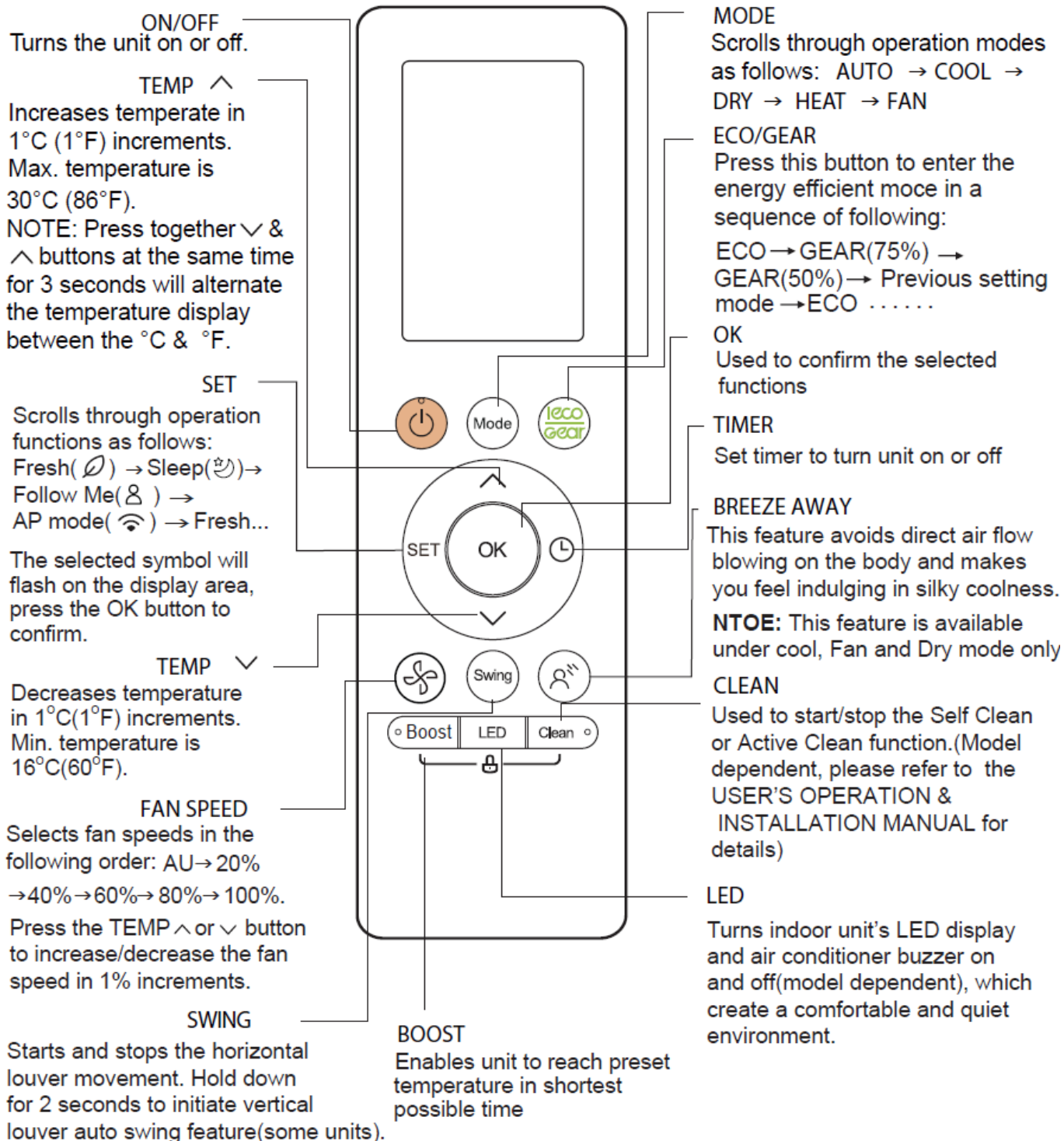
1. This device may not cause harmful interference, and
2. this device must accept any interference received, including interference that may cause undesired operation.

This equipment has been tested and found to comply with the limits for a Class B digital device, according to part 15 of the FCC Rules. These limits are designed to provide reasonable protection against harmful interference in a residential installation. This equipment generates, uses, and can radiate radio frequency energy and, if not installed and used under the instructions, may cause harmful interference to radio communications. However, there is no guarantee that interference will not occur in a particular installation. If this equipment does cause harmful interference to radio or television reception, which can be determined by turning the equipment off and on, the user is encouraged to try to correct the interference by one or more of the following measures:

- Reorient or relocate the receiving antenna.
- Increase the separation between the equipment and the receiver.
- Connect the equipment to an outlet on a circuit different from that to which the receiver is connected.
- Consult the dealer or an experienced radio/TV technician for help.
- Changes or modifications not approved by the party responsible for compliance could void the user's authority to operate the equipment.

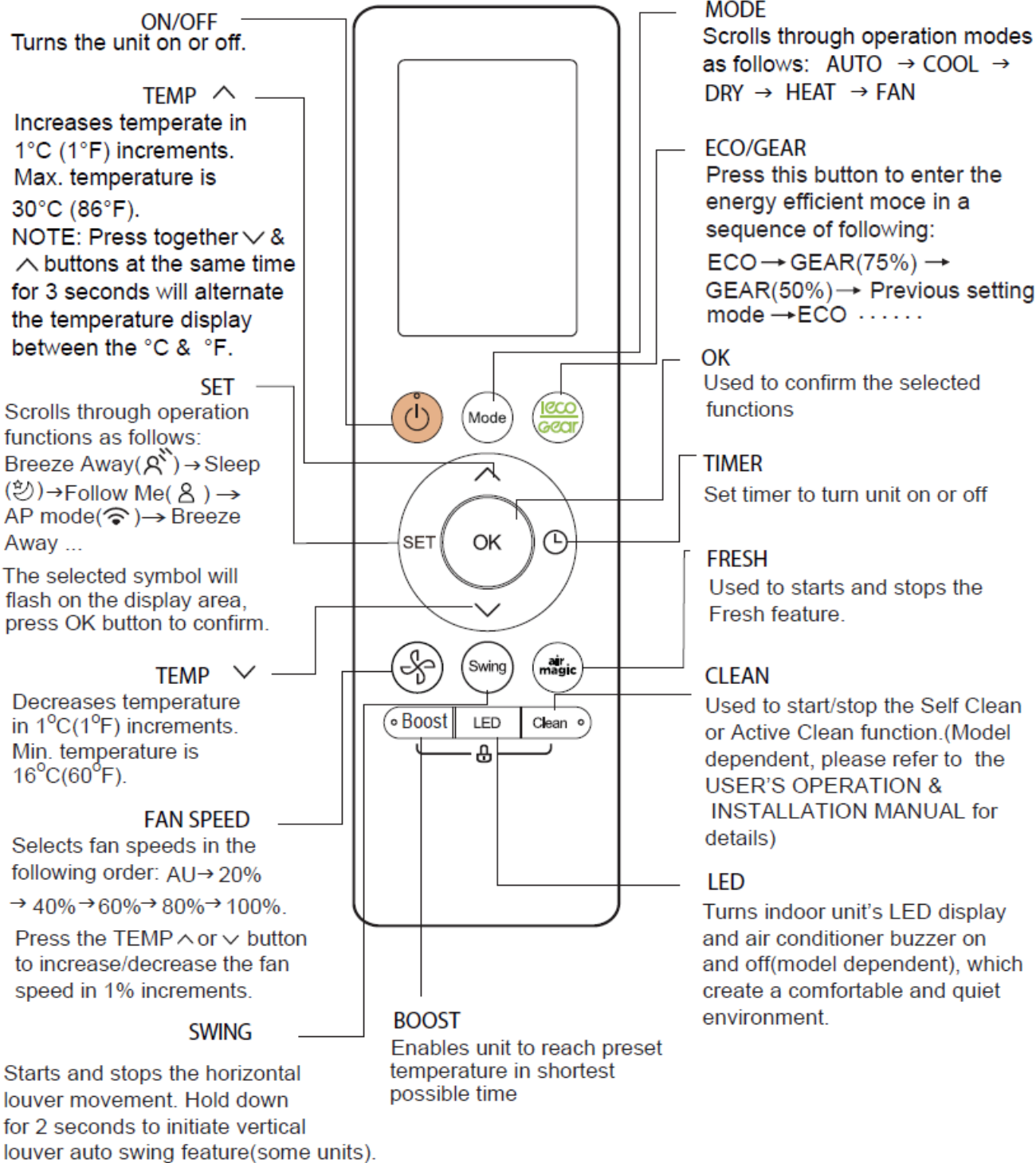
Buttons and Functions

Before you begin using your new air conditioner, make sure to familiarize yourself with its remote control. The following is a brief introduction to the remote control itself. For instructions on how to operate your air conditioner, refer to the How to Use Basic Functions section of this manual.



Model

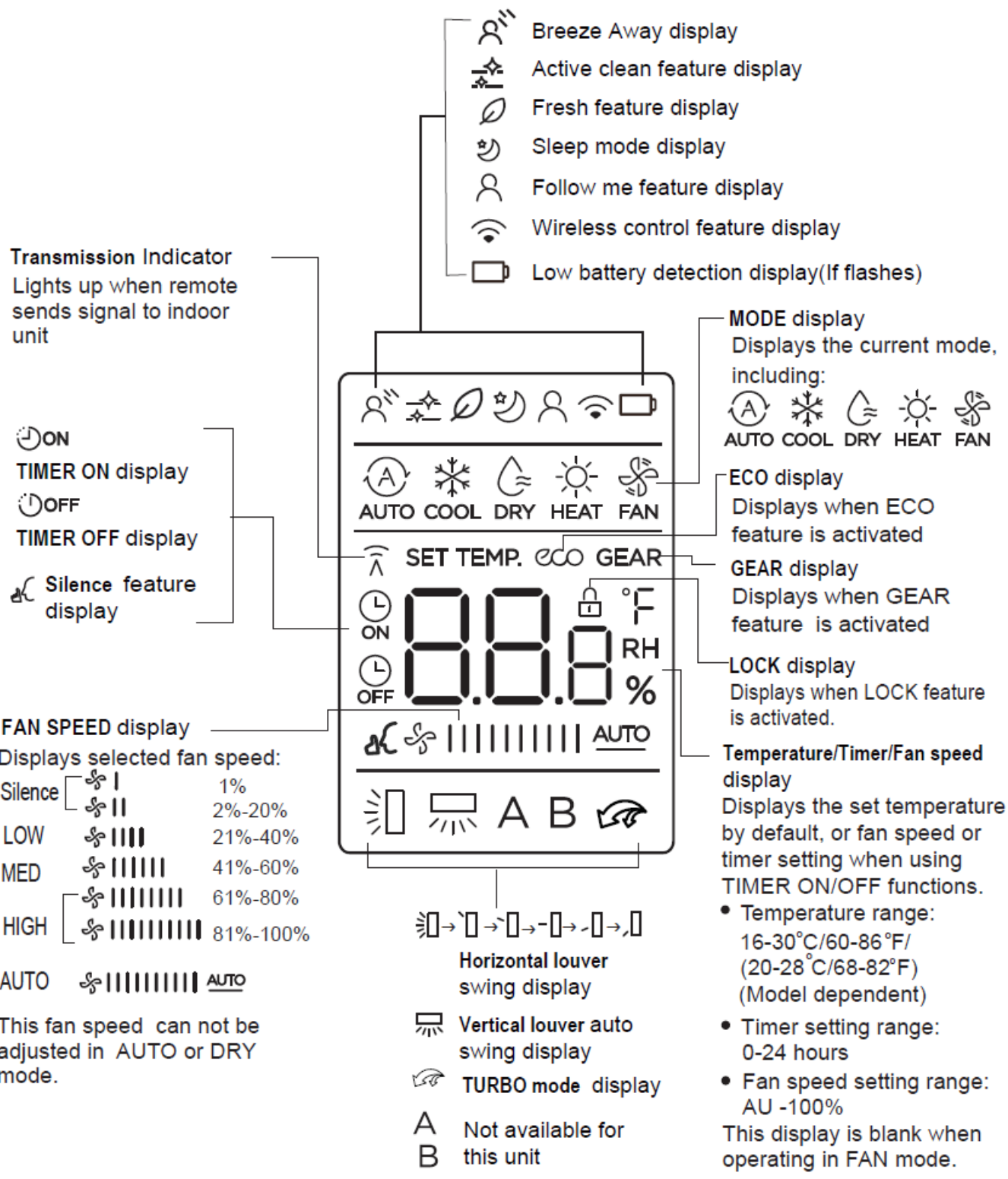
- RG10A2(B2S)/BGEFU1
- RG10A10(B2S)/BGEF(20-28 C/68-82 F)
- RG10A(B2S)/BGEF, RG10A(B2S)/BGEFU1 (Fresh feature is not available)
- RG10A2(B2S)/BGCEFU1, RG10A2(B2S)/BGCEF(Cooling only models,
- AUTO mode and HEAT mode are not available)



Model: RG10A1(B2S)/BGEF

Remote Screen Indicators

- Information is displayed when the remote controller is powered up.



Note
 All indicators shown in the figure are for clear presentation. However, during the actual operation, only the relative function signs are shown on the display window.

How to Use Basic Functions

Basic operation



ATTENTION! Before an operation, please ensure the unit is plugged in and power is available.

SETTING TEMPERATURE

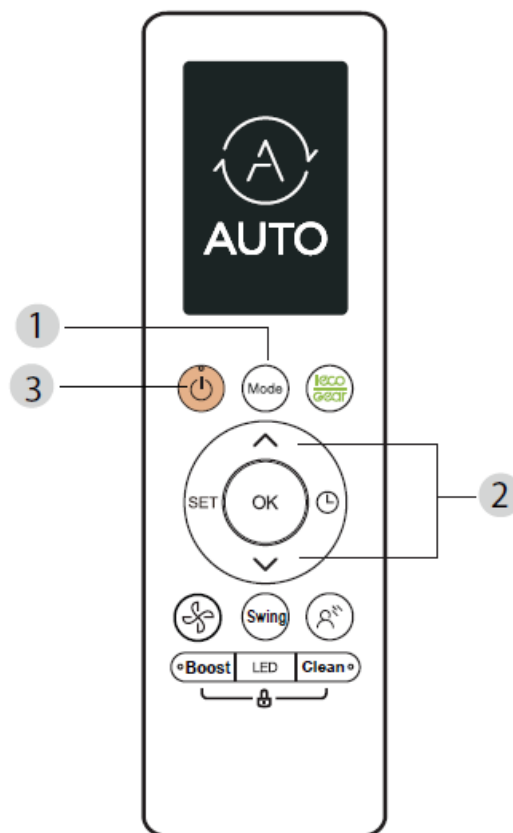
- The operating temperature range for units is 16-30°C (60-86°F)/20-28 C(68-82 F).
- You can increase or decrease the set temperature in 1°C (1°F) increments.

AUTO Mode



In AUTO mode, the unit will automatically select the COOL, FAN, HEAT or DRY function based on the set temperature.

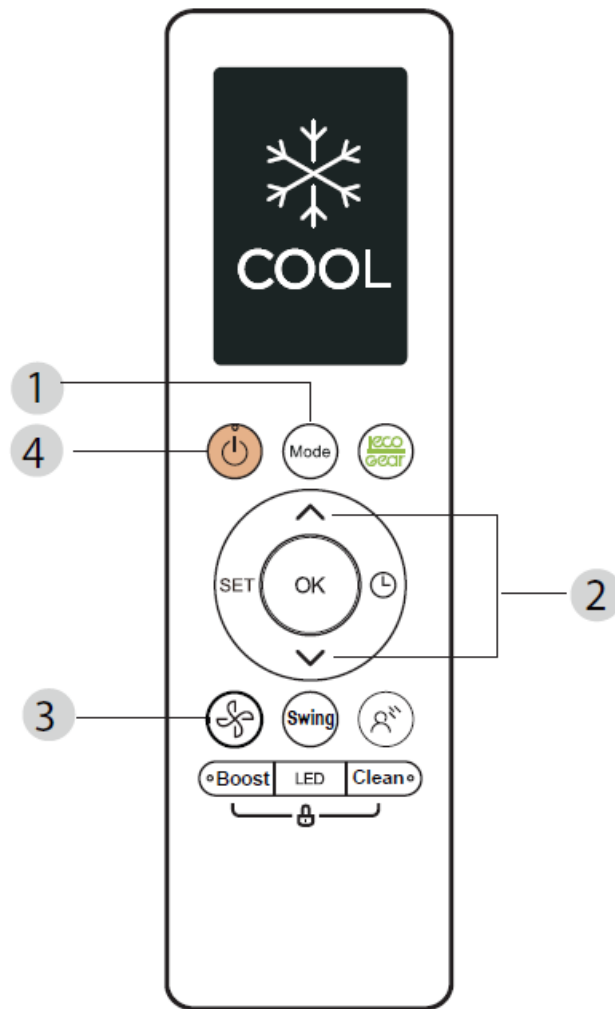
1. Press the MODE button to select AUTO.
2. Set your desired temperature using the TEMP  or TEMP  button.
3. Press the ON/OFF button to start the unit.

NOTE: FAN SPEED can't be set in AUTO mode.





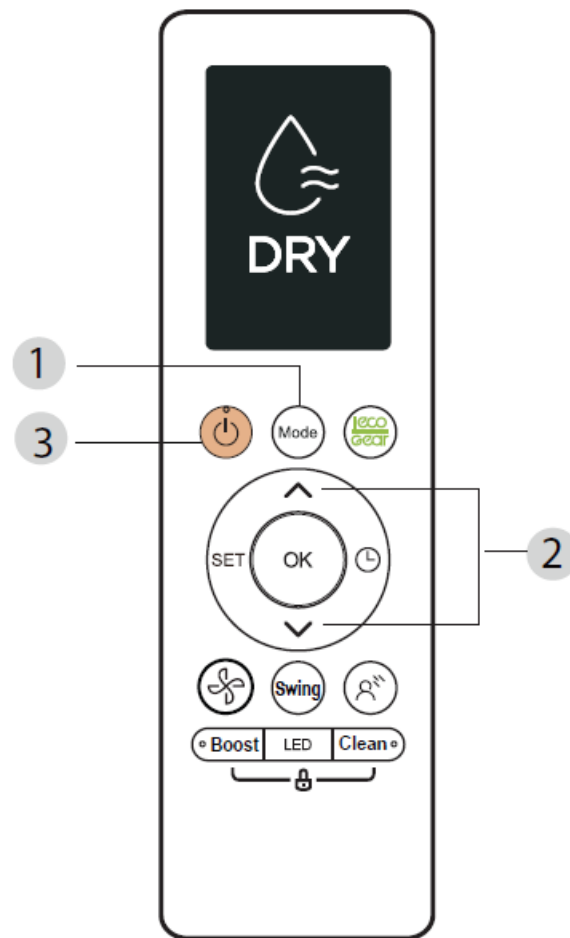
COOL Mode

1. Press the MODE button to select COOL mode.
2. Set your desired temperature using the TEMP  or T EMP  button.
3. Press the FAN button to select the fan speed in a range of AU-100%.
4. Press the ON/OFF button to start the unit.



DRY Mode (dehumidifying)

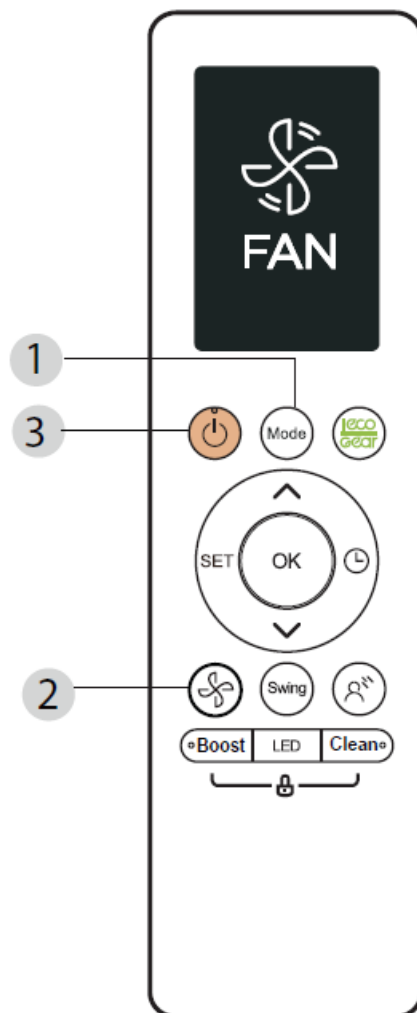
1. Press the MODE button to select AUTO.
2. Set your desired temperature using the TEMP  or TEMP  button.
3. Press the ON/OFF button to start the unit.





FAN Mode

1. Press the MODE button to select FAN mode.
2. Press FAN button to select the fan speed in a range of AU-100%.
3. Press the ON/OFF button to start the unit.

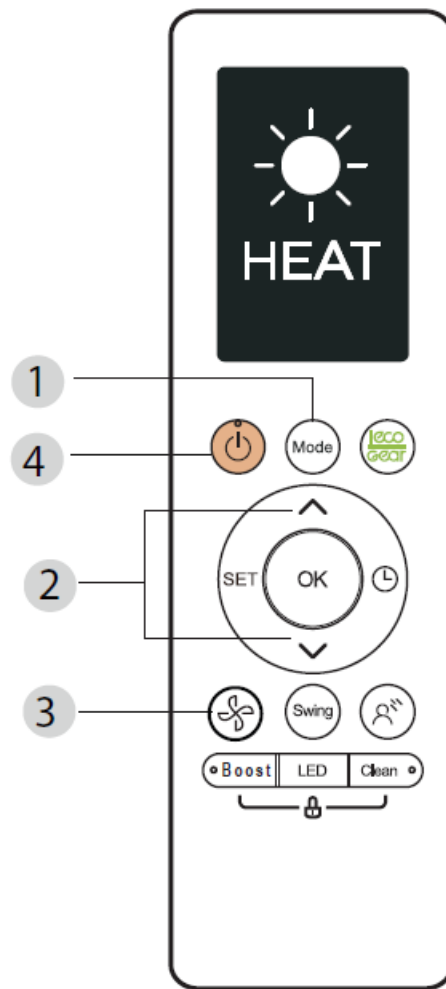
NOTE: You can't set the temperature in FAN mode.
As a result, your remote control's LCD screen will not display temperature.



HEAT Mode

1. Press the MODE button to select HEAT mode.
2. Set your desired temperature using the TEMP  or TEMP  button.
3. Press FAN button to select the fan speed in a range of AU-100%.
4. Press the ON/OFF button to start the unit.

NOTE: As outdoor temperature drops, the performance of your unit's HEAT function may be affected. In such instances, we recommend using this air conditioner in conjunction with other heating appliances.

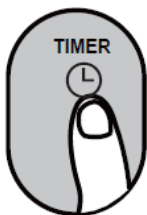


Setting the TIMER

- **TIMER ON/OFF** – Set the amount of time after which the unit will automatically turn on/off.

TIMER ON setting

Press **TIMER** button to initiate the ON time sequence.



Press Temp. up or down button for multiple times to set the desired time to turn on the unit.

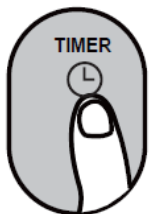


Point remote to unit and wait 1sec, the **TIMER ON** will be activated.



TIMER OFF setting

Press TIMER button to initiate the OFF time sequence.



Press Temp. up or down button for multiple times to set the desired time to turn off the unit.



Point remote to unit and wait 1sec, the TIMER OFF will be activated.

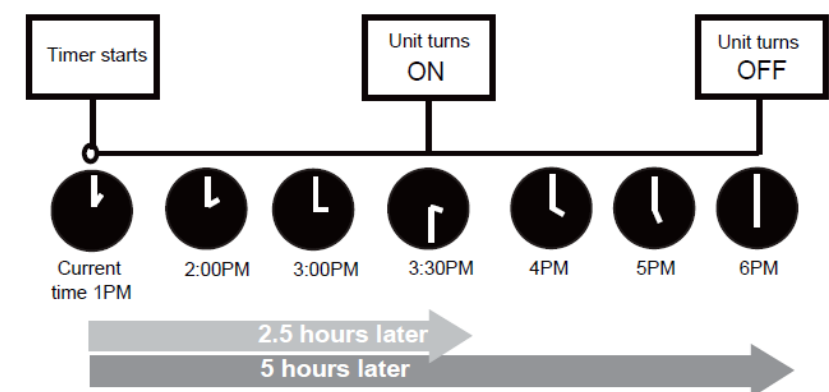
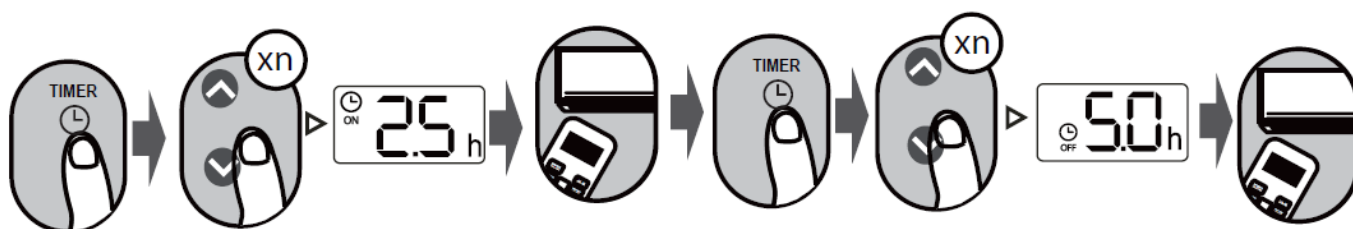


NOTE

1. When setting the TIMER ON or TIMER OFF, the time will increase by 30-minute increments with each press, up to 10 hours. After 10 hours and up to 24, it will increase in 1-hour increments. (For example, press 5 times to get 2.5h, and press 10 times to get 5h,) The timer will revert to 0.0 after 24.
2. Cancel either function by setting its timer to 0.0h.

TIMER ON & OFF setting(example)

- Keep in mind that the periods you set for both functions refer to hours after the current time.

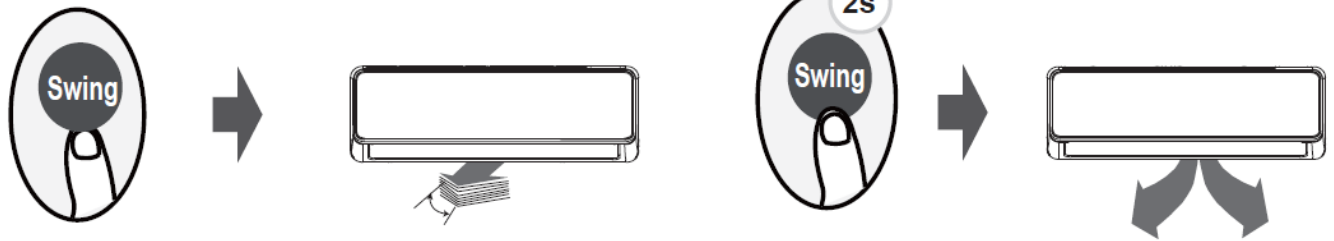


Example: If a current timer is 1:00 PM, to set the timer as above steps, the unit will turn on 2.5h later (3:30 PM) and turn off at 6:00 PM.

How to Use Advanced Functions

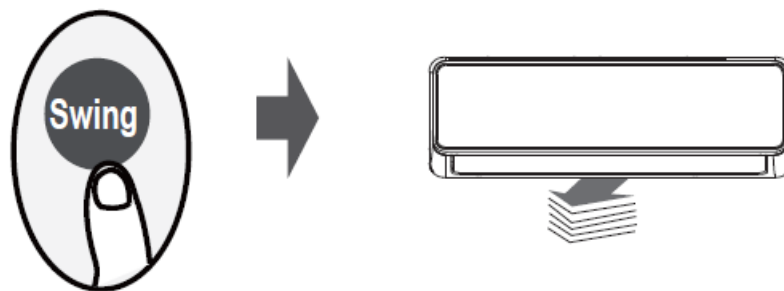
Swing function

Press Swing button



- The horizontal louver will swing up and down automatically when pressing the Swing button.
- Press again to make it stop.
- Keep pressing this button for more than 2 seconds, the vertical louver swing function is activated. (Model dependent)

Airflow direction



- If continue to press the SWING button, five different airflow directions can be set.
- The louver can be moved at a certain range each time you press the button.
- Press the button until the direction you prefer is reached.

NOTE: When the unit is off, press and hold the MODE and SWING buttons together for one second, the louver will open for a certain angle, which makes it very convenient for cleaning. Press and hold **MODE** and SWING buttons together for one second to reset the louver(Model dependent).

LED DISPLAY



- Press this button to turn on and turn off the display on the indoor unit.
- Keep pressing this button for more than 5 seconds, the indoor unit will display the actual room temperature. Press more than 5 seconds again will revert back to display the setting temperature.

ECO/GEAR function



Press X-ECO button to enter the energy efficient mode in a sequence of following:
 ECO → GEAR(75%) → GEAR(50%) → Previous setting mode → ECO.....
 Note: This function is only available under COOL mode.

ECO operation

Under cooling mode, press this button, and the remote controller will adjust the temperature automatically to 24 C/75 F, fan speed of Auto to save energy (only when the set temperature is less than 24 C/75 F). If the set temperature is above 24 C/75 F, press the ECO button, the fan speed will change to Auto, and the set temperature will remain unchanged.

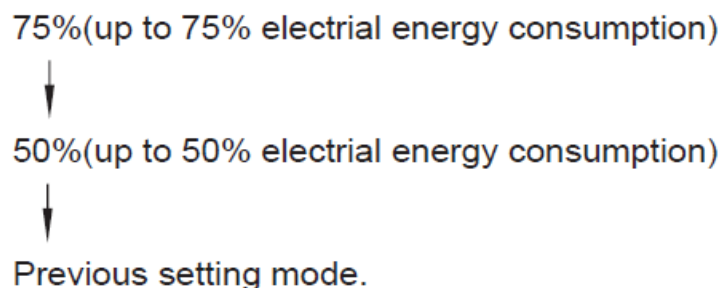
NOTE

Pressing the ECO button, modifying the mode, or adjusting the set temperature to less than 24 C/75 F will stop ECO operation.

Under ECO operation, the set temperature should be 24 C/75 F or above, it may result in insufficient cooling. If you feel uncomfortable, just press the ECO button again to stop it.

GEAR operation

Press the ECO/GEAR button to enter the GEAR operation as follows:



- Under GEAR operation, the display on the remote controller will alternate between electrical energy consumption and set temperature.

Silence function

- Keep pressing the Fan button for more than 2 seconds to activate/disable the Silence function(some units).
- Due to the low-frequency operation of the compressor, it may result in insufficient cooling and heating capacity. Press ON/OFF, Mode, Sleep, Turbo or Clean button while operating will cancel silence function.



FP function

- Press this button 2 times during one second under HEAT Mode and setting temperature of 16 C/60 F or 20 C/68 F(for model RG10A10(B2)/BGEF).

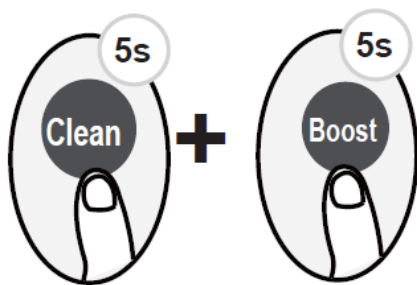


The unit will operate at high fan speed (while compressor on) with temperature automatically set to 8°C/46°F.

Note: This function is for heat pump air conditioner only.

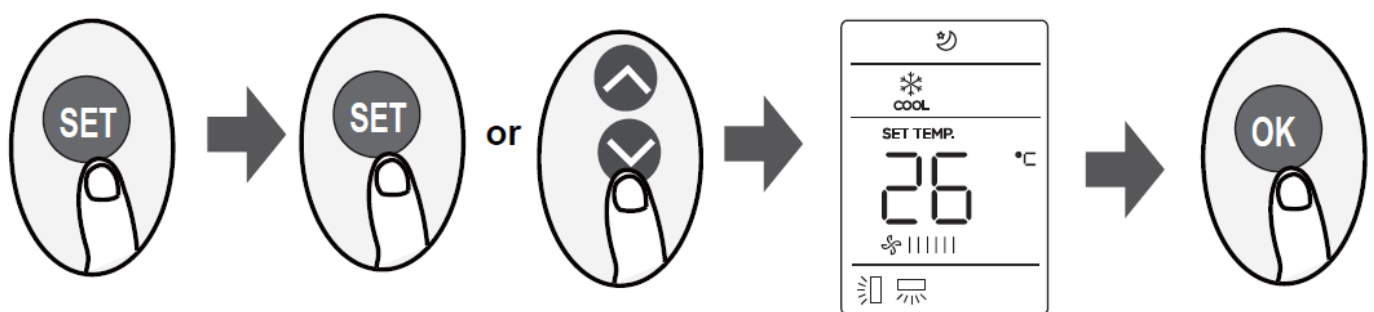
Press this button 2 times under HEAT Mode and set a temperature of 16 C/60 F to activate the FP function. Press On/Off, Sleep, Mode, Fan and Temp. button while operating will cancel this function.

LOCK function



Press together **Clean** button and **Boost** button at the same time more than 5 seconds to activate Lock function. All buttons will not response except pressing these two buttons for two seconds again to disable locking.

SET function



- Press the SET button to enter the function setting, then press the SET button or TEMP or TEMP button to select the desired function. The selected symbol will flash on the display area, press the OK button to confirm.
- To cancel the selected function, just perform the same procedures as above.
- Press the SET button to scroll through operation functions as follows: Breeze Away () \rightarrow Fresh* () \rightarrow Sleep () \rightarrow Follow Me () \rightarrow AP mode () [*]: If your remote controller has a Breeze Away button or Fresh button, you can not use the SET button to select the Breeze Away or Fresh feature.

Breeze Away function() (some units)

- This feature avoids direct airflow blowing on the body and makes you feel indulging in silky coolness.

NTOE: This feature is available under cool, Fan, and Dry modes only.

FRESH function() (some units)

- When the FRESH function is initiated, the Ionizer/Plasma Dust Collector(depending on models) is energized and will help to remove pollen and impurities from the air.

Sleep function()

- The SLEEP function is used to decrease energy use while you sleep (and don't need the same temperature settings to stay comfortable). This function can only be activated via remote control.
- For the details, see Sleep operation in USER'S MANUAL.

Note: The SLEEP function is not available in FAN or DRY mode.

Follow me function()

The FOLLOW ME function enables the remote control to measure the temperature at its current location and send this signal to the air conditioner every 3-minute interval.

When using AUTO, COOL, or HEAT modes, measuring ambient temperature from the remote control(instead of from the indoor unit itself) will enable the air conditioner to optimize the temperature around you and ensure maximum comfort.

NOTE: Press and hold the Boost button for seven seconds to start/stop the memory feature of the Follow Me function.


- If the memory feature is activated, ON displays for 3 seconds on the screen.
- If the memory feature is stopped, OFF displays for 3 seconds on the screen.
- While the memory feature is activated, press the ON/OFF button, shift the mode or power failure will not cancel the Follow me function.

AP function() (some units)

- Choose AP mode to do wireless network configuration. For some units, it doesn't work by pressing the SET button. To enter the AP mode, continuously press the LED button seven times in 10 seconds.

The design and specifications are subject to change without prior notice for product improvement. Consult with the sales agency or manufacturer for details.

Documents / Resources

	Midea RG10A(B2S)/BGEF Remote Controller [pdf] Owner's Manual RG10A B2S BGEF Remote Controller, RG10A B2S BGEF, Remote Controller, Controller
---	---

References

- [User Manual](#)

[Manuals+](#). [Privacy Policy](#)

This website is an independent publication and is neither affiliated with nor endorsed by any of the trademark owners. The "Bluetooth®" word mark and logos are registered trademarks owned by Bluetooth SIG, Inc. The "Wi-Fi®" word mark and logos are registered trademarks owned by the Wi-Fi Alliance. Any use of these marks on this website does not imply any affiliation with or endorsement.