



MICTUNING 8542101664 LED Rock Light with Bluetooth Controller User Guide

[Home](#) » [MICTUNING](#) » MICTUNING 8542101664 LED Rock Light with Bluetooth Controller User Guide 

Contents

- [1 MICTUNING 8542101664 LED Rock Light with Bluetooth Controller](#)
- [2 SPECIFICATIONS](#)
- [3 Accessories](#)Two kinds of fixed frame
- [4 Install Step](#)
- [5 The Last](#)
- [6 Open the APP and show the “Wireless connection fails”](#)
 - [6.1 The color of the Light can not match the setup color](#)
- [7 Technology Parameter](#)
- [8 FEATURES](#)
- [9 FREQUENTLY ASKED QUESTIONS](#)
- [10 VIDEO – OVERVIEW](#)








MICTUNING 8542101664 LED Rock Light with Bluetooth Controller



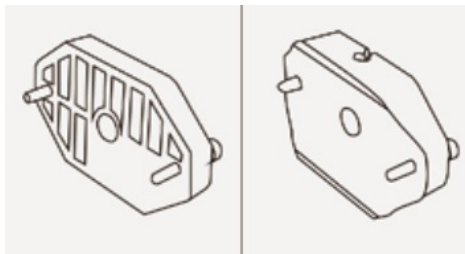
SPECIFICATIONS

- **Brand:** MICTUNING
- **Color:** Multicolor,White
- **Vehicle Service Type:** Motorcycle
- **Voltage:** 12 Volts
- **Light Source Type:** LED
- **Position:** Inner
- **Item Weight:** 4.4 Pounds
- **Material:** Aluminum
- **Water Resistance Level:** Waterproof
- **Item Weight:** 4.4 pounds
- **Product Dimensions:** 7.87 x 5.12 x 5.71 inches
- **Item model number:** 8542101664

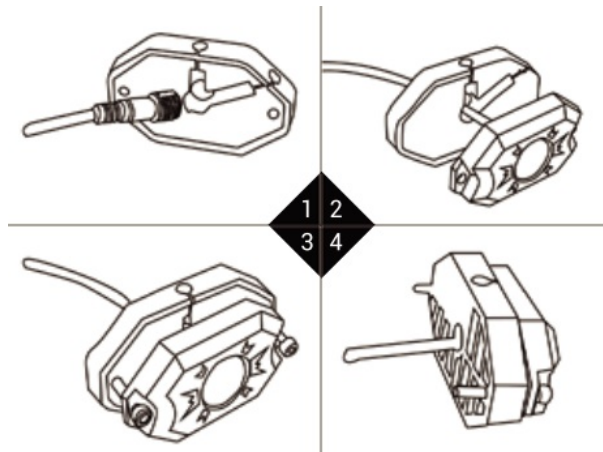
Accessories

Accessories			
4 Pods RGB Rock Lights			
 X1	X4	X4	X8
8 Pods RGB Rock Lights			
 X1	X8	X8	X16

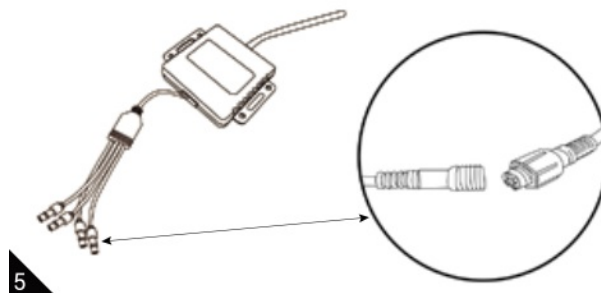
Two kinds of fixed frame

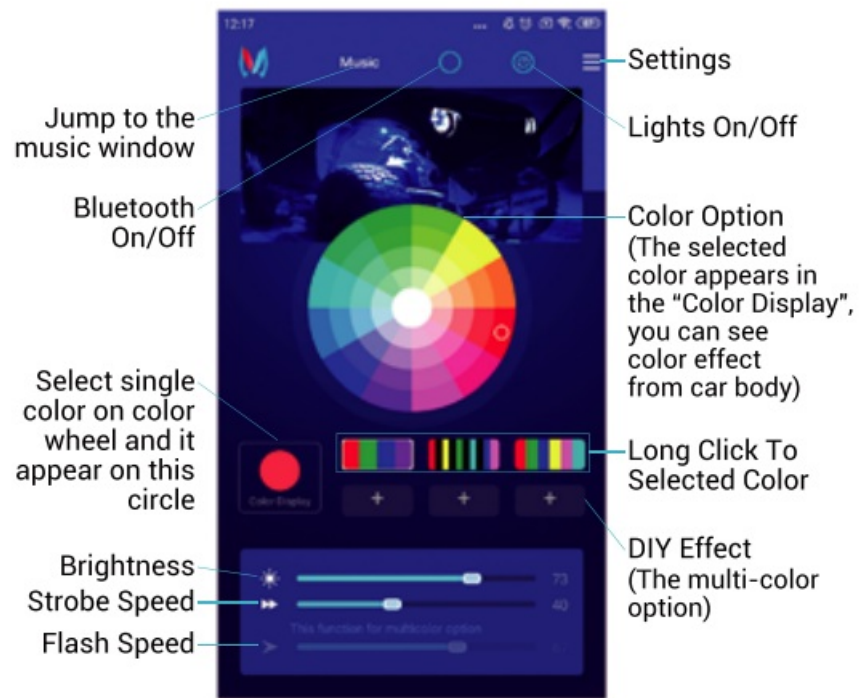


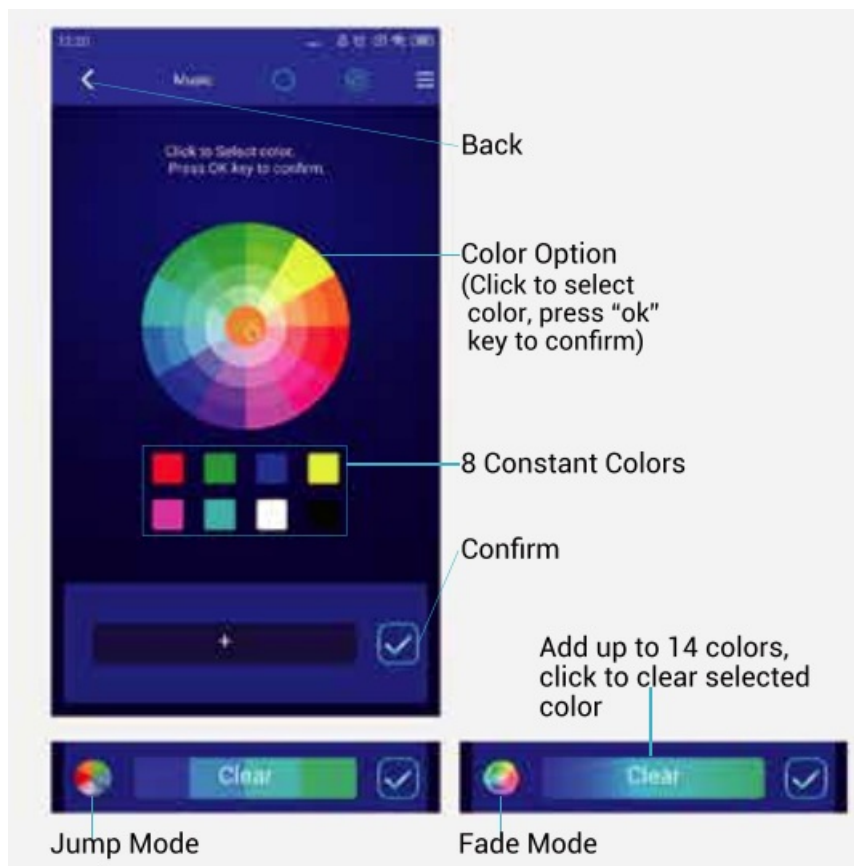
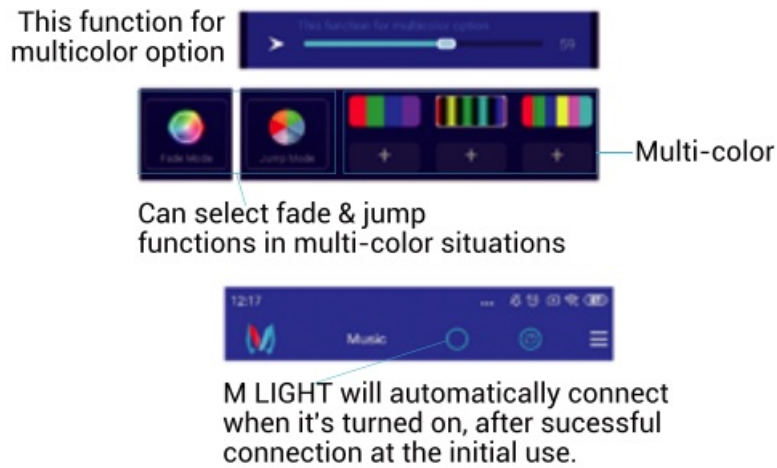
Install Step



The Last







Open the APP and show the "Wireless connection fails"

Please check whether your Wireless device is in a state of electricity Please check whether your Wireless device is within range of the mobile phone Wireless,

usually mobile phone Wireless is within 10 meters, but different mobile has different distance. Please refer to the previous "Wireless device connection" to reconnect the device.

The color of the Light can not match the setup color

Please check if the line output to the light is connected correctly Sinale color dimming mode:

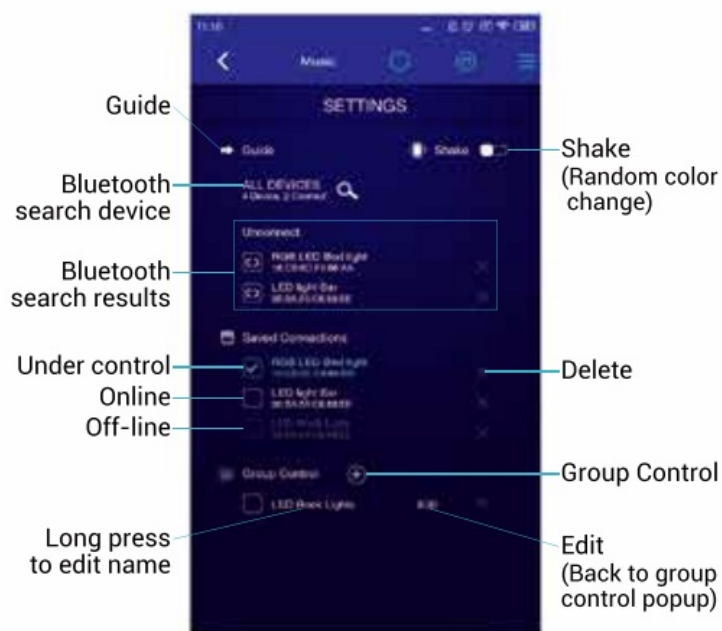
- The Anode -- The Anode
- the cathode -- R

Color temperature mode:

- the Anode — the Anode
- warm white—R
- cold white—G

RGB mode:

- the Anode- -the Anode
- R—R
- B—B
- G—G



Single Set Control



After selecting the light set, go back to home page for single color operation or DIY color effect.



Multi Sets Control

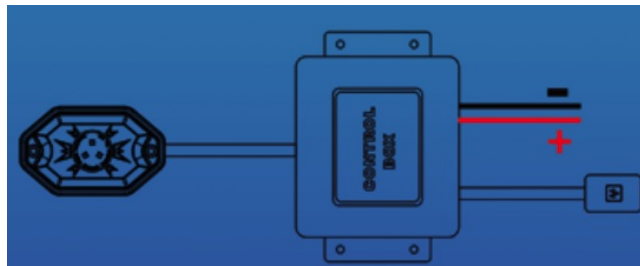


Select you wanted devices and then click the group button.
Go back to home page for single color operation or DIY color effect.

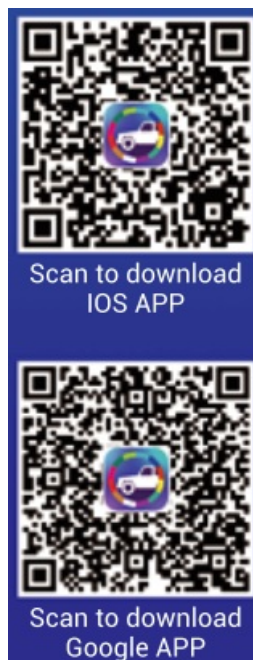


Technology Parameter

- **Input Voltage:** DC9-32V
- **Output Power:** 2A+3, common cathode
- **Control Mode:** Mobile phone
- **Gray Scale:** 256*256*256
- **Total Brightness Level:** 8-grade
- **Operating Temperature:** -20°C – 50 °C
- **IP Grade:** IP68



Kindly Reminder: keep the control box away from the engine



FEATURES

- **LED Lights:** LED rock lights use energy-efficient and durable LEDs (Light Emitting Diodes) as the light source.

These lights are available in various colors, including white, red, green, blue, and RGB (color-changing).

- **Bluetooth Controller:** The Bluetooth controller allows you to wirelessly control the LED rock lights using a smartphone or a dedicated remote control app. It establishes a connection between your device and the rock lights, enabling you to adjust settings and change lighting modes.
- **Mobile App Compatibility:** LED rock lights with a Bluetooth controller often come with a companion mobile app compatible with iOS and Android devices. The app provides an intuitive interface for controlling the lights, offering features like color selection, brightness adjustment, and dynamic lighting effects.
- **Lighting Effects:** These rock lights offer a range of lighting effects, including solid colors, strobing, fading, and color-changing patterns. With the Bluetooth controller, you can switch between different modes and customize the lighting according to your preferences.
- **Music Sync:** Some LED rock lights feature a music sync function, where the lights can pulse or change colors in sync with the music playing on your device. This creates an engaging visual experience and adds excitement to your vehicle's atmosphere.
- **Multiple Zones:** LED rock lights may support multiple zones, allowing you to control different sets of lights independently. For example, you can assign different colors or lighting effects to the front and rear rock lights or create distinct lighting patterns for each side of your vehicle.
- **Waterproof and Durable:** LED rock lights are designed to withstand outdoor conditions and are often rated as waterproof or water-resistant. This ensures that the lights remain protected from rain, mud, and other environmental elements, making them suitable for off-roading and outdoor adventures.
- **Easy Installation:** LED rock lights are typically designed for simple installation. They come with mounting brackets or adhesive pads for attaching the lights to the vehicle's body or undercarriage. Additionally, the wiring process is usually straightforward, with connectors and instructions provided.
- **Brightness and Dimming:** LED rock lights offer adjustable brightness levels, allowing you to set the desired intensity of illumination. This feature enables you to switch between vibrant, attention-grabbing lighting and subtle, accent lighting based on your needs.
- **Energy Efficiency:** LED technology is known for its energy efficiency. LED rock lights consume relatively low power while providing bright and vibrant lighting. This efficiency ensures that they have minimal impact on your vehicle's battery life.

LED rock lights with a Bluetooth controller provide a convenient way to enhance the appearance of your vehicle, create unique lighting effects, and add a touch of personalization. Always refer to the specific product's documentation or manufacturer's information for detailed features and specifications.

FREQUENTLY ASKED QUESTIONS

Will LED rock lights drain the battery?

While rock lights don't consume much power, they will drain the vehicle's battery if left on too long without the vehicle running.

Why did my rock lights stop working?

1) Reset the app in your smartphone settings and re-open the App. 2) Disconnect power from the Rock Light Control Box for 10 seconds and reconnect. 4) Ensure that the Location Services setting is turned ON in your smartphone settings. 6) Check to ensure your Smartphone is running on the latest software version.

What are the benefits of rock lights?

Although headlights and fog lights are useful to see the road around you at night, rock lights are designed to be installed underneath the vehicle so that drivers can see rocks and debris that might potentially cause damage to the vehicle.

How long do rock lights last?

The rock lights can work last 10000 hours after the test. the car lights work with stability and brightness and long life which can bring a nice experience when you have travel or cross country with your family and friend.

How do rock lights work?

Rock lights are small lights in hard casings that are typically placed beneath a vehicle's body in order to illuminate the space below. Rock lights come in a variety of different styles. Some rock lights are static single-color bulbs and others come with RGB color-changing LEDs.

Do rock lights get hot?

Rock Light can get very hot when used for long periods of time.

Can you install rock lights without drilling?

Make your ORACLE Lighting LED Rock Light installation even easier with these magnetic adapters. No need to drill into metal surfaces now you can use this easy-to-install magnet to your rock lights for a hassle-free installation experience.

How many rock lights are included in the MICTUNING 8542101664 LED Rock Light kit?

The specific number of rock lights included in the MICTUNING 8542101664 LED Rock Light kit may vary. It's best to refer to the product description or contact the manufacturer directly for the exact number of lights included in the kit.

Can I control the MICTUNING 8542101664 LED Rock Lights with my smartphone?

Yes, the MICTUNING 8542101664 LED Rock Light kit comes with a Bluetooth controller that allows you to control the lights using a smartphone or tablet. By connecting to the Bluetooth controller through a dedicated app, you can adjust the colors, brightness, and lighting patterns of the rock lights wirelessly.

What colors can the MICTUNING 8542101664 LED Rock Lights produce?

LED rock lights typically have RGB LEDs, which means they can produce a wide range of colors. This includes red, green, blue, white, and various shades in between. With the Bluetooth controller and the accompanying app, you can choose and customize the colors to suit your preferences.

Are the MICTUNING 8542101664 LED Rock Lights waterproof?

The waterproof rating of the MICTUNING 8542101664 LED Rock Lights may vary, depending on the specific model. LED rock lights designed for outdoor use are often built to withstand water exposure. It's recommended to check the product specifications or user manual for information on the specific waterproof rating of the lights.

Can I sync the MICTUNING 8542101664 LED Rock Lights with music?

Many LED rock light kits with Bluetooth controllers offer a music sync function. This allows the lights to flash and change colors in sync with the rhythm of your music. It's recommended to check the product description or features list to confirm if the MICTUNING 8542101664 LED Rock Lights support music synchronization.

How do I install the MICTUNING 8542101664 LED Rock Lights?

The installation process for the MICTUNING 8542101664 LED Rock Lights may vary. In general, they are designed to be mounted on the underside of vehicles or other surfaces. The kit typically includes mounting brackets and hardware for secure installation. It's important to follow the manufacturer's instructions and safety guidelines during the installation process.

VIDEO – OVERVIEW



[Download this PDF link: MICTUNING 8542101664 LED Rock Light with Bluetooth Controller User Guide-1.pdf](#)
[Download this MP4 link: MICTUNING 8542101664 LED Rock Light with Bluetooth Controller User Guide-1.mp4](#)