




## MicroTouch IC-215P-AW3 Touch Computer User Guide

[Home](#) » [MICROTOUCH](#) » MicroTouch IC-215P-AW3 Touch Computer User Guide 

*MicroTouch IC-215P-AW3 Touch Computer  
User Guide*



# User Guide

# IC-215P-AW3

## Touch Computer



Version 1.2 2022/02



### About This Document

No part of this publication may be reproduced, transmitted, transcribed, stored in a retrieval system, or translated into any language or computer language, in any form or by any means, including, but not limited to, electronic, magnetic, optical, chemical, manual, or otherwise without prior written permission of MICROTOUCH.

The information in this document is subject to change without notice. MICROTOUCH makes no representations or warranties with respect to the contents herein, and specifically disclaims any implied warranties of merchantability or fitness for a particular purpose. MICROTOUCH reserves the right to revise this publication and to make

changes from time to time in the content hereof without obligation of MICROTOUCH to notify any person of such revisions or changes. Windows is a registered trademark of Microsoft, Inc. Other brand or product names are trademarks of their respective holders.

## Compliance Information

### For FCC (USA)

This equipment has been tested and found to comply with the limits for a Class A digital device, pursuant to part 15 of the FCC Rules. These limits are designed to provide reasonable protection against harmful interference when the equipment is operated in a commercial environment. This equipment generates, uses, and can radiate radio frequency energy and, if not installed and used in accordance with the instruction manual, may cause harmful interference to radio communications. Operation of this equipment in a residential area is likely to cause harmful interference in which case the user will be required to correct the interference at his own expense.

This device complies with part 15 of the FCC Rules. Operation is subject to the following two conditions: (1) this device may not cause harmful interference, and (2) this device must accept any interference received, including interference that may cause undesired operation.

### For IC (Canada)

CAN ICES-3(A)/NMB-3(A)

### For CE (EU)

The device complies with the EMC Directive 2014/30/EU and Low Voltage Directive 2014/35/EU

## Disposal Information

Waste Electrical and Electronic Equipment



This symbol on the product indicates that, under the European Directive 2012/19/EU governing waste from electrical and electronic equipment, this product must not be disposed of with other municipal waste. Please dispose of your waste equipment by handing it over to a designated collection point for the recycling of waste electrical and electronic equipment. To prevent possible harm to the environment or human health from uncontrolled waste disposal, please separate these items from other types of waste and recycle them responsibly to promote the sustainable reuse of material resources.

For more information about recycling of this product, please contact your local city office or your municipal waste disposal service.

## Usage Notice



**Warning** – To prevent the risk of fire or shock hazards, and do not expose the product to moisture.



**Warning** – Please do not open or disassemble the product as this may cause electric shock.



**Warning** – Power cord shall be connected to a socket-outlet with earth connection.



**Warning** – The cable cover cannot be removed under normal use conditions.



**Warning** – Stability Hazard. The touch monitor may fall, causing serious personal injury or death. To prevent injury, this touch monitor must be securely attached to the wall in accordance with the installation instructions.

## Precautions

Please follow all warnings, precautions and maintenance as recommended in this user's manual to maximize the life of your unit.

**Do :**

- Turn off the product before cleaning.
- Use a soft cloth moistened with mild detergent to clean the product housing.
- Use only the qualified power adapter that comes with your device.
- Disconnect the power plug from AC outlet if the product is not going to be used for an extended period of time.

**Don't :**

- Do not use abrasive cleaners, waxes or solvents for your cleaning.
- Do not operate the product under the following conditions:
  - Extremely hot, cold or humid environment.
  - Areas susceptible to excessive dust and dirt.
  - Near any appliance generating a strong magnetic field.

**Caution**

Risk of explosion if battery is replaced by an incorrect type. Dispose of used batteries according to the instructions.

**Contents**

**1 Chapter 1 Product Introduction**

**1.1 1.1 Overview**

**1.2 1.2 Feature**

**1.3 1.3 Specifications**

**1.4 1.4 Block Diagram**

**1.5 1.5 Interface Connectors**

**1.6 1.6 Package Overview**

**2 Chapter 2 Product Installation**

**2.1 2.1 About VESA Mount**

**2.2 2.2 Power On / Off Switch**

**2.3 2.3 Dimension**

**2.3.1 2.3.1 System Only**

**2.4 2.4 Optional Accessory Installation**

**2.4.1 2.4.1 Install the Stand**

**2.4.2 2.4.2 Remove the Stand**

**2.4.3 2.4.3 Install the Cables**

**2.4.4 2.4.4 Install the Camera Module**

**2.4.5 2.4.5 Remove the Camera Module**

**2.4.6 2.4.6 Install the MSR Module**

**2.4.7 2.4.7 Remove the MSR Module**

**3 Appendix**

**3.1 Declaration of the Presence Condition of the Restricted Substances Marking**

**4 Documents / Resources**

**5 Related Posts**

# Chapter 1

## Product Introduction

### 1.1 Overview

The IC-215P-AW3 is a thin 21.5" touch computer that offers a unique design with expandability and flexibility, making expansion and accessory installation easy. The versatility of IC-215P-AW3 is an exceptional choice for applications in all business sectors, especially in the retail market.

### 1.2 Feature

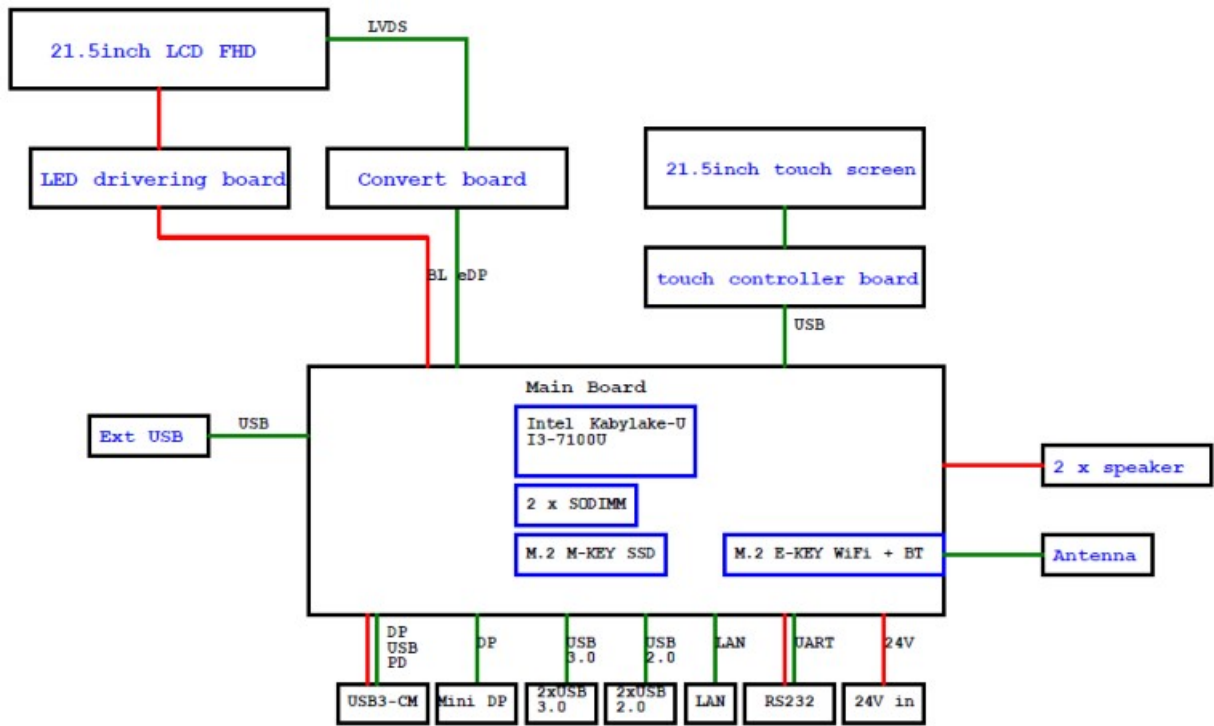
- Intel I3-7100U processor.
- Sleek design for a better user experience.
- Patented I/O design for better wiring management during install.

### 1.3 Specifications

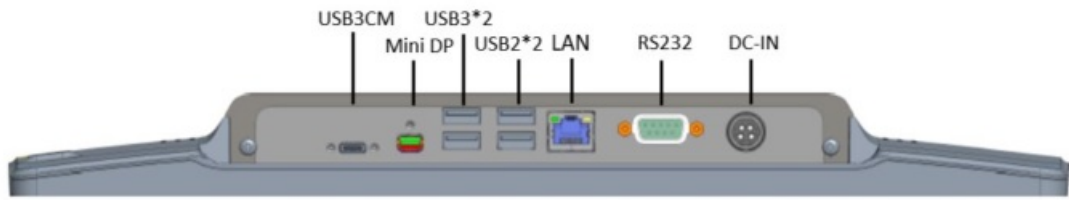
System	
CPU	Intel I3-7100U Processor, 3MB Cache, up to 2.4 GHz
GPU	Intel HD Graphics 620
Memory	2 x SO-DIMM, DDR4, Support up to 32GB/64bits, 2133MT/s
Storage	1 x M.2 2280 (SATA III & NVME)
Input Power	DC in 24V/5A 4PIN
Display	Dual channel LVDS, resolution up to 1920x1080P60
Touch	TPK/ZCC 21.5-inch P-Cap touch sensor (EETI 80H84 controller), supports 10 fingers touch function.
Audio	2 x speaker (2W x 2)
Network	Gigabit Ethernet (Intel i219LM) Optional m.2 2230 module: Intel AC 3168, Wi-Fi 802.11a/b/g/n/ac 1T1R, Bluetooth 4.2 (Support BLE)
External IO Ports	1 x Power button 1 x USB Type-C (USB3CM:1x USB 3.1 gen1 with Display ALT Mode and PD2.0, support 5V@3A / 12V@2.5A output, Maximum 30W.) 1 x MiniDP(4K@60HZ)

	2 x USB2.0 Type-A , 2 x USB3.0 Type-A 1 x LAN (Support 10/100/1000Mbps) 1 x DB9 (RS232, pin9 with NA/5V/12V support that select by BIOS) 1 x 24V DC In
Internal IO Ports (inside plastic cover)	2 x connector (5V/0.5A)
OS Support	Windows 10
Operation Temp	0°C~40°C
Storage Temp	-20°C to 60°C
Operation Humidity	20~80%, Non-Condensing
Storage Humidity	10~90%, Non-Condensing
<b>LCD Touch Panel</b>	
Size	21.5" TFT LCD
Brightness (non-touch screen)	Typical 250 cd/m <sup>2</sup> ; min. 200 cd/m <sup>2</sup>
Brightness (P-CAP with ZCC)	Typical 212.5 cd/m <sup>2</sup> ; min. 170 cd/m <sup>2</sup>
Brightness (P-CAP with TPK)	Typical 225 cd/m <sup>2</sup> ; min. 180 cd/m <sup>2</sup>
Number of Pixels	1920 (H) × 1080 (V)/ 60Hz
Tilt Angle	10°~70°
<b>Environment</b>	
Certificate	CE 、 FCC、 LVD、 UKCA
Mounting	VESA 100 mm x 100 mm
Dimension (W x H x D)	System Only : 510.96 mm x 308.01 mm x 45.9 mm System with Stand Module : 510.96 mm x 323.67 mm x 180.56 mm
Net Weight	System Only : 4.2 Kg System with Stand Module : 6.77 Kg
Gross Weight	System Only : 6.6 Kg • System with Stand Module : 9.79 Kg

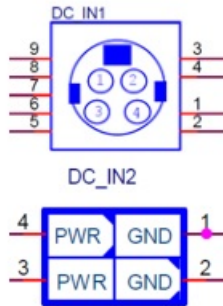
#### 1.4 Block Diagram



### 1.5 Interface Connectors

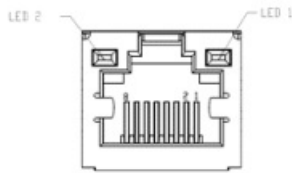


### 24V DC In



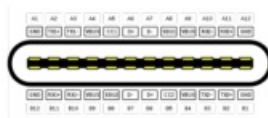
Pin #	Signal Name	Pin #	Signal Name
1	GND	2	GND
3	24V	4	24V

### RJ45 for LAN



Pin #	Signal Name	Pin #	Signal Name
1	TP1+	2	TP1-
3	TP2+	4	TP3-
5	TP3+	6	TP2-
7	TP4+	8	TP4-
LED	Function	Color	
LED1	Speed	1000	Orange
		100	Green
		10	Non
LED2	Active	Yellow	

### USB-C x1

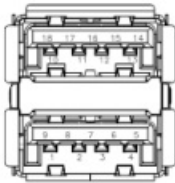


Pin #	Signal Name	Pin #	Signal Name
A1	GND	B12	GND
A2	SSTXp1	B11	SSRXp1
A3	SSTXn1	B10	SSRXn1
A4	VBUS	B9	VBUS
A5	CC1	B8	SBU2



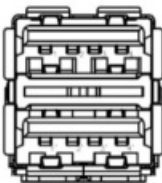
A6	Dp1	B7	Dn2
A7	Dn1	B6	Dp2
A8	SBU1	B5	CC2
A9	VBUS	B4	VBUS
A10	SSRXn2	B3	SSTXn2
A11	SSRXp2	B2	SSTXp2
A12	GND	B1	GND
<b>Note</b>			
1. USB3CM: Support DP ALT mode and 5V@3A / 12V@3A output;			
2. USB3CP: Support USB3*2 and 5V@3A output.			

USB 3.0 Dual x1



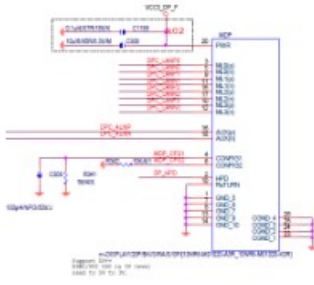
Pin #	Signal Name	Pin #	Signal Name
1	USB5V	10	USB5V
2	D-	11	D-
3	D+	12	D+
4	GND	13	GND
5	StdA_SSRX-	14	StdA_SSRX-
6	StdA_SSRX+	15	StdA_SSRX+
7	GND_DRAIN	16	GND_DRAIN
8	StdA_SSTX-	17	StdA_SSTX-
9	StdA_SSTX+	18	StdA_SSTX+
<b>Note</b>			
Every on USB3.0 Power current provide 0.9A			

USB 2.0 Dual x1



Pin #	Signal Name	Pin #	Signal Name
1	USB5V	1	USB5V
2	D-	2	D-
3	D+	3	D+
4	GND	4	GND
<b>Note</b>			
Every on USB2.0 Power current provide 1A(Regular)			

## Mini DP



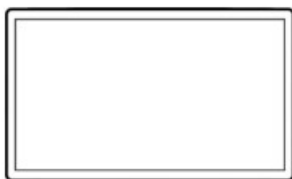
Pin #	Signal Name	Pin #	Signal Name
1	GND	2	Hot Plug Detect
3	ML_Lane 0 (p)	4	CONFIG1
5	ML_Lane 0 (n)	6	CONFIG2
7	GND	8	GND
9	ML_Lane 1 (p)	10	ML_Lane 3 (p)
11	ML_Lane 1 (n)	12	ML_Lane 3 (n)
13	GND	14	GND
15	ML_Lane 2 (p)	16	AUX_CH (p)
17	ML_Lane 2 (n)	18	AUX_CH (n)
19	GND	20	DP_PWR

## RS232 x1

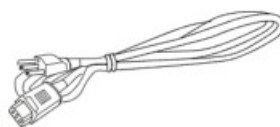


Pin #	Signal Name	Pin #	Signal Name
1	DCD	2	SIN
3	SOUT	4	DTR
5	GND	6	DSR
7	RTS	8	CTS
9	0V / 5V/ 12V Max current=1A		

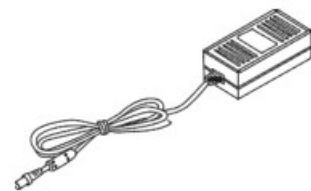
## 1.6 Package Overview



Touch Computer



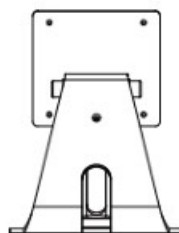
Power Cord



DC Power Supply



Screw



Stand  
(Optional)



**Warning!**

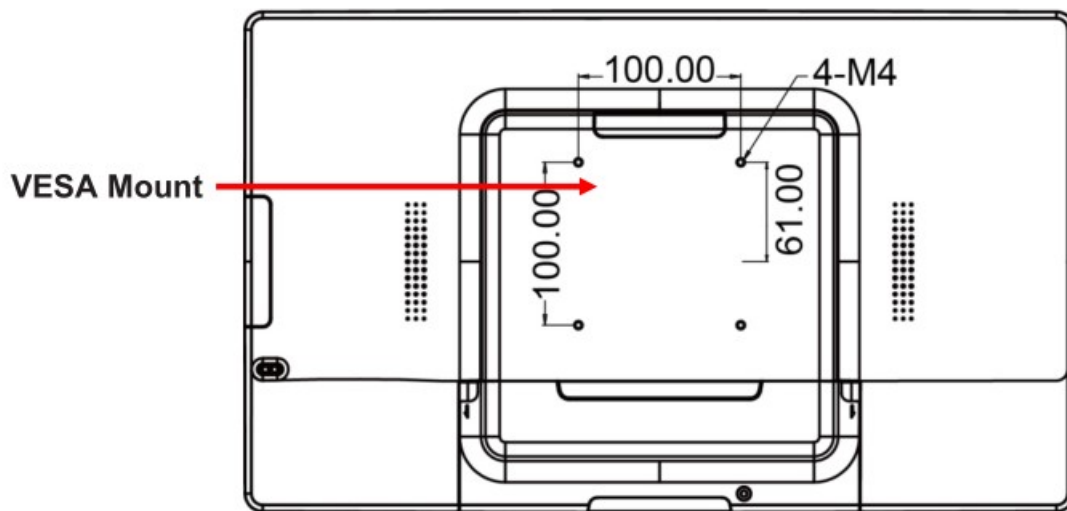
This product is intended to be supplied by a UL Listed Power Adapter, rated 24Vdc, 5A minimum. (complied with LPS or PS2) Tma = 40 degree C minimum, and the altitude of operation = 3048m minimum. If it needs further assistance with purchasing the power source, please contact to MICROTOUCH for further information.

## Chapter 2 Product Installation

### 2.1 About VESA Mount

The IC-215P-AW3 conform to the “VESA Flat Display Mounting Interface Standard” which defines a physical mounting interface for touch computer, and corresponding with the standards of touch computer mounting devices, such as wall-mounted. The VESA mount is located on the back of this unit.

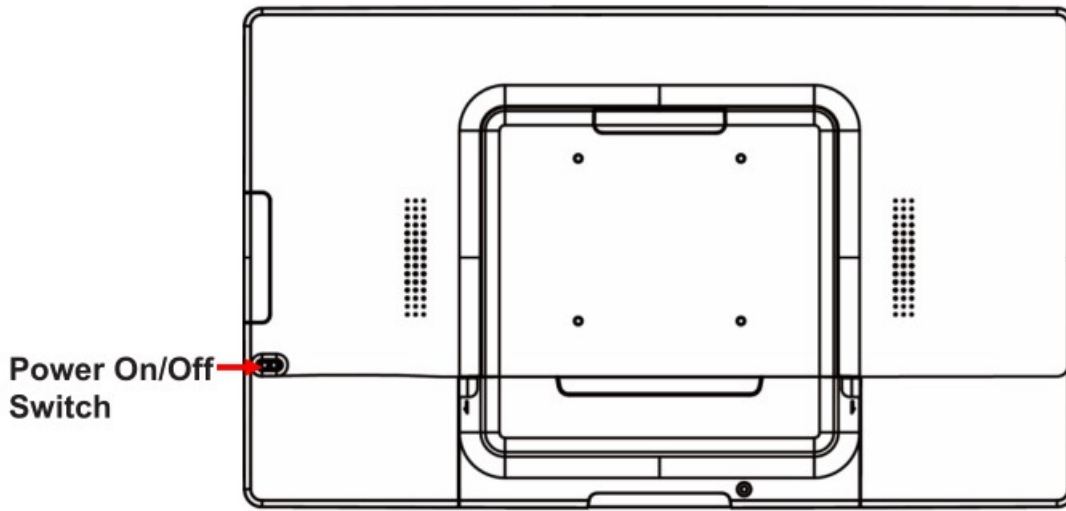
The IC-215P-AW1 may be wall mounted in the horizontal position (output connector facing down) or vertical position (output connector facing left or right).



#### Warning!

Please use the correct screws! The distance between the back cover surface and the bottom of the screw hole is 8 mm. Please use four M4 / 8 mm screws diameter with proper length to mount your monitor. Note: The mounting stand must be able to support at least 9.3 lbs (4.2 Kg).

### 2.2 Power On / Off Switch

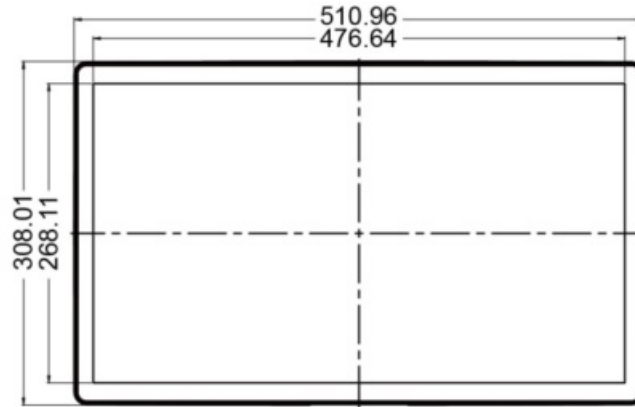


Function	Description
Power on	Press the power button.
Sleep	With OS settings, sleep or shut down choose one.
Power off	
Force power off	Press the power button 4 sec.

## 2.3 Dimension

### 2.3.1 System Only

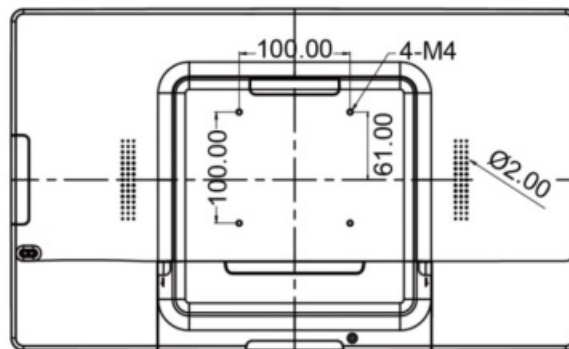
Front View



Side View



Rear View

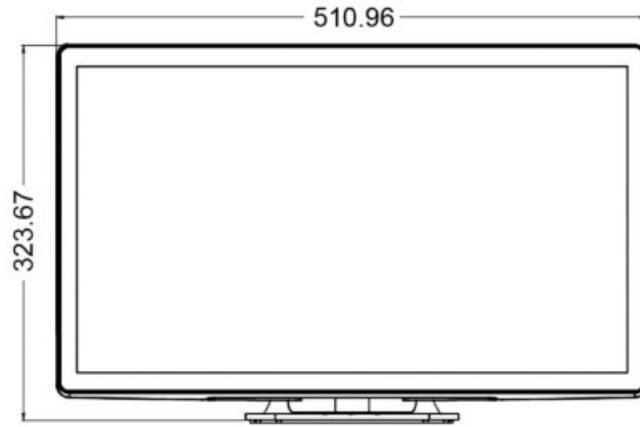


Bottom View

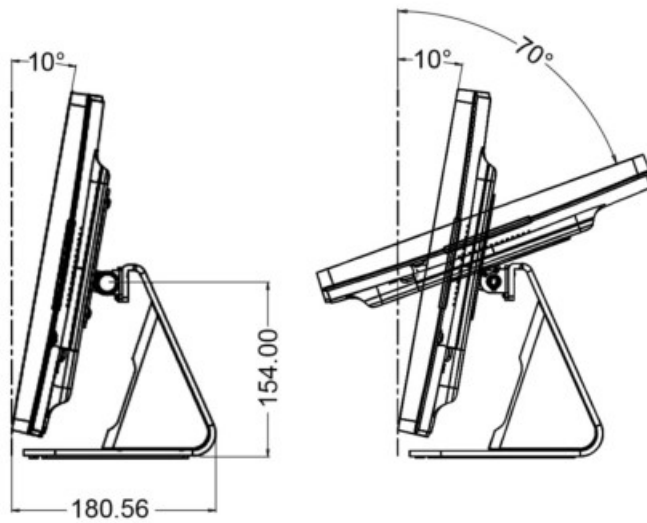


### 2.3.2 System with Stand

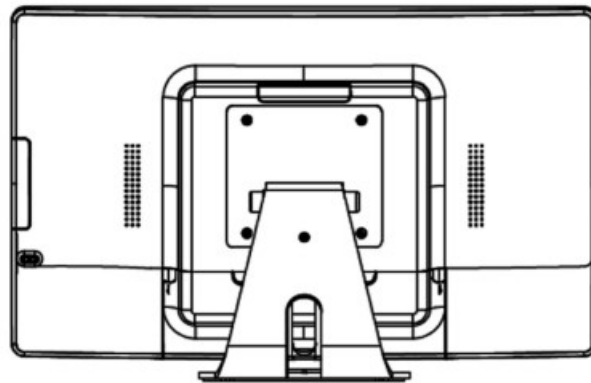
Front View



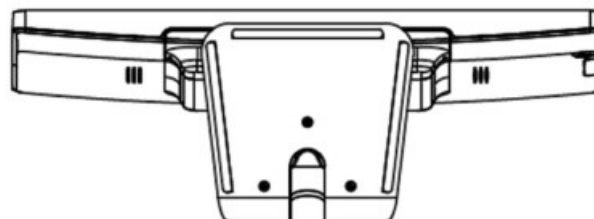
Side View



Rear View



Bottom View

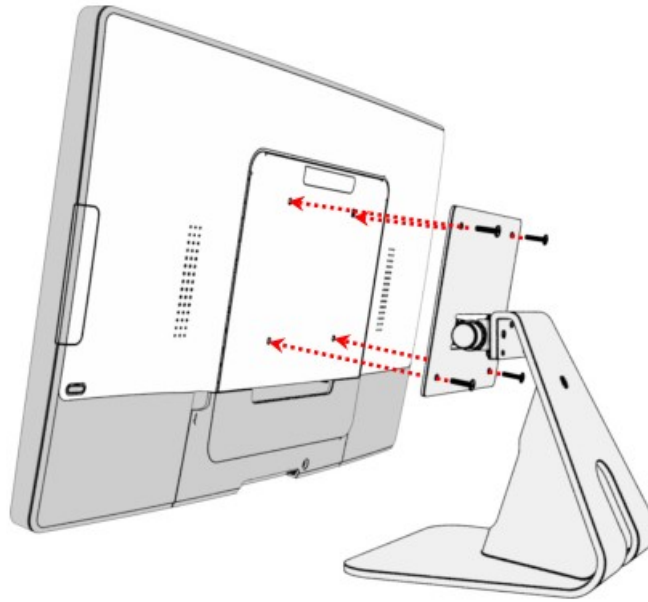


## 2.4 Optional Accessory Installation

**Note:** Please install/ dismantle the product when the computer system is in the shutdown state.

#### 2.4.1 Install the Stand

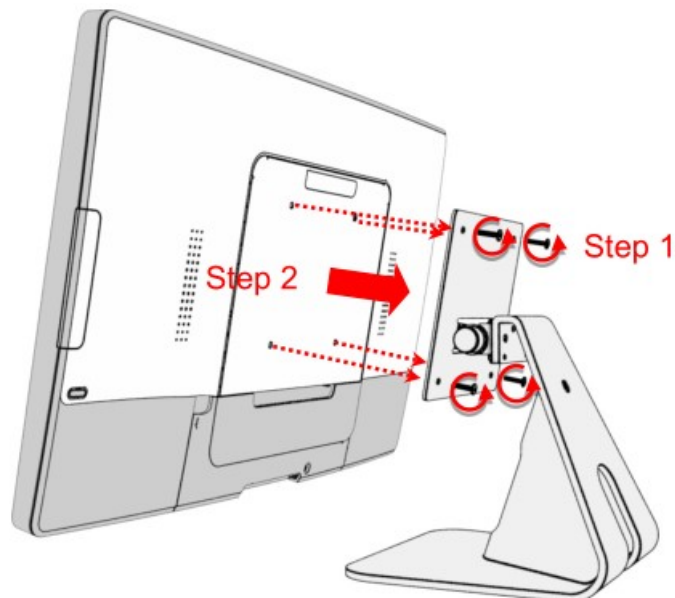
Place stand module on back of touch computer and align the screw holes. Install the four M4 screws to fasten the stand.



#### 2.4.2 Remove the Stand

Step 1: Loosen the screws

Step 2: Pull it to out from touch computer and remove stand module.

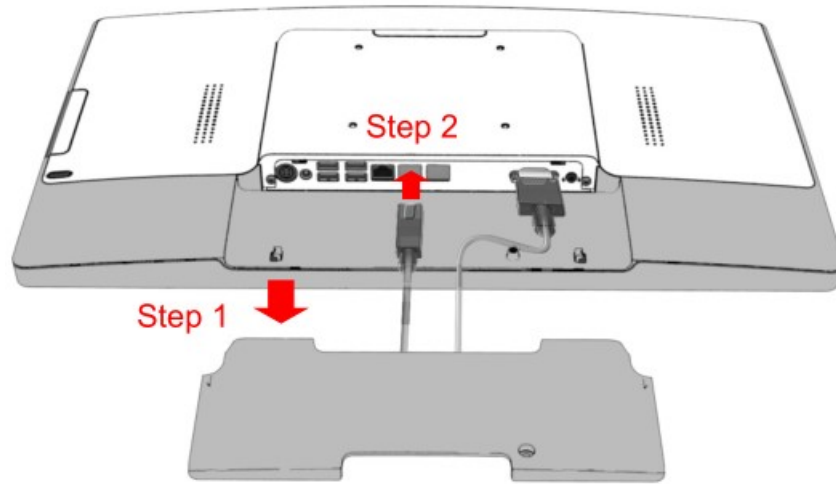


#### 2.4.3 Install the Cables

##### 2.4.3.1 Cable Organizer

Step 1: Pull down the cable cover for cables installation.

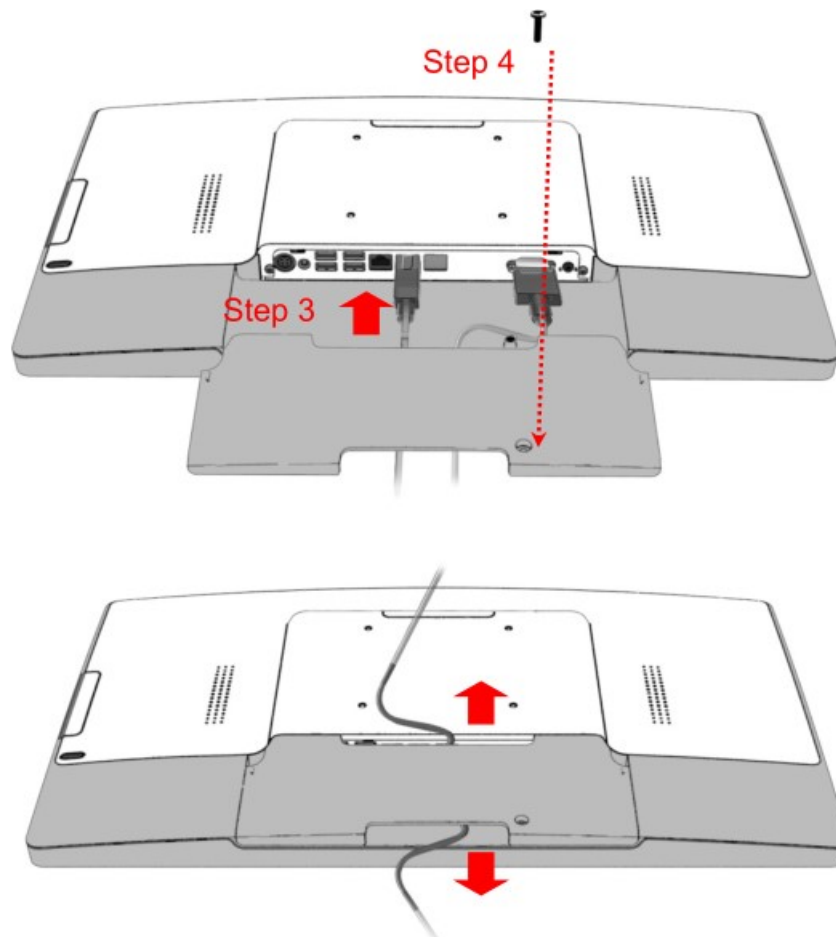
Step 2: To fit the plugs



Step 3: To assemble the cable cover.

Step 4: Driving a screw to fix cable cover

(The cable can be fixed above or below the cable cover) Step 4



#### 2.4.4 Install the Camera Module

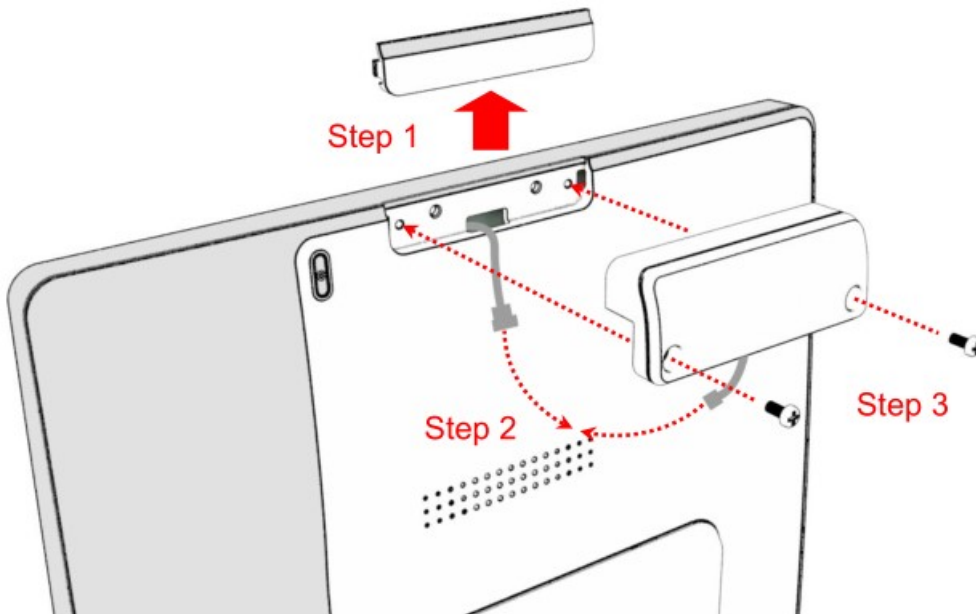
Camera Module max. 19g

Step 1: Remove the side cover.

Step 2: Connect the camera module cable to the touch computer.

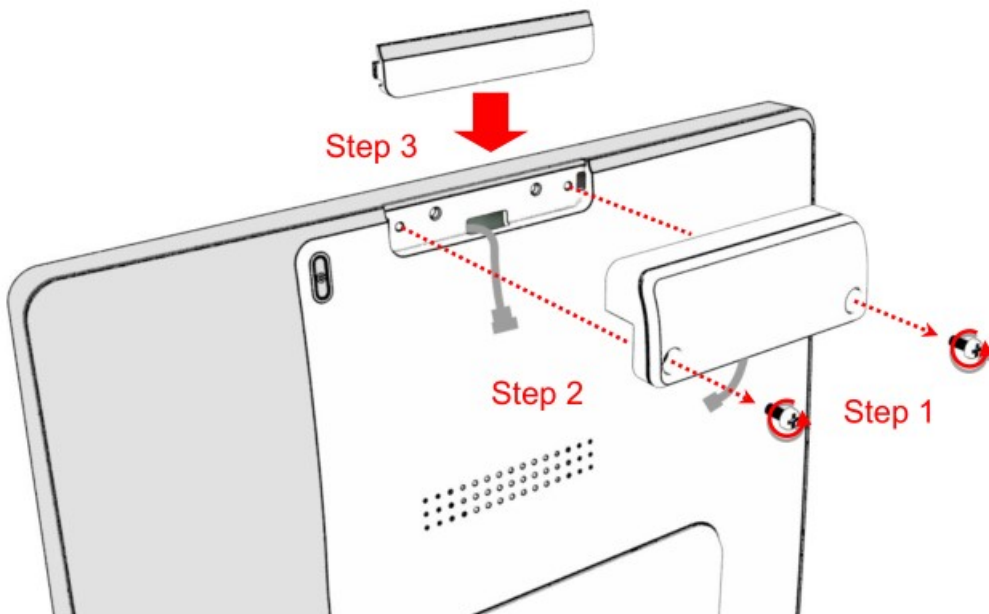
Step 3: Install the two M3 screws to fasten the camera module.





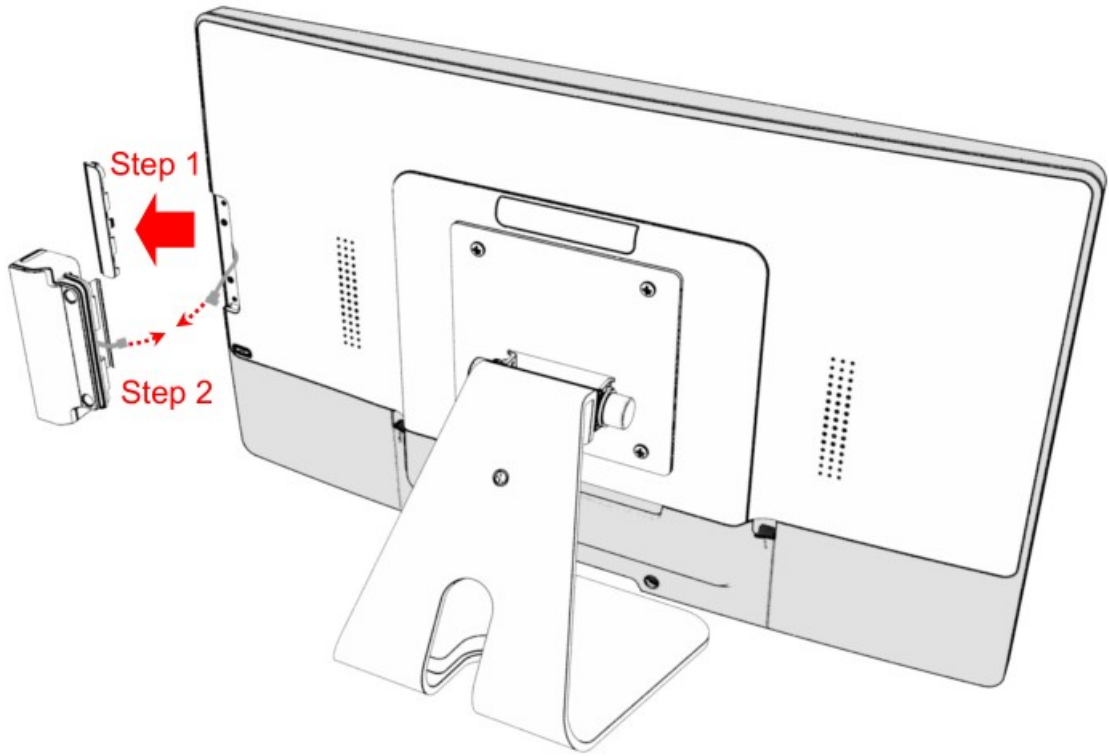
#### 2.4.5 Remove the Camera Module

- Step 1: Loosen the screws.
- Step 2: Remove the camera module cable from the touch computer.
- Step 3: Replace the the side cover.

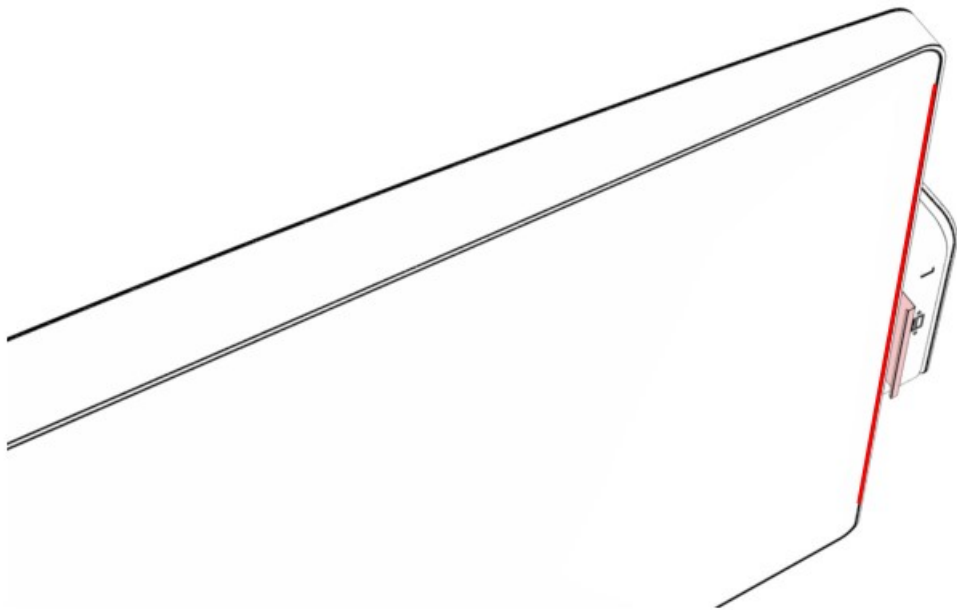


#### 2.4.6 Install the MSR Module

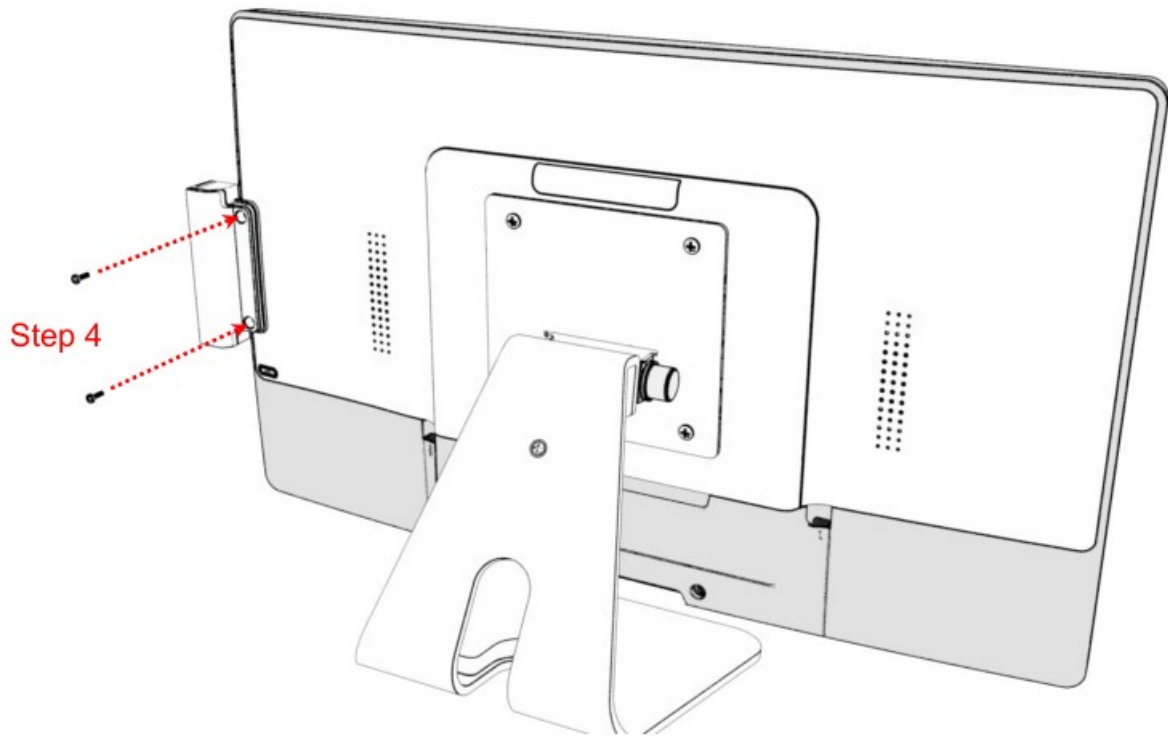
- MSR Module max. 62g.
- Step 1: Remove the side cover.
- Step 2: Connect the MSR module cable to the touch computer.



Step 3: The metal bracket hook into the gap between cover glass and bezel.

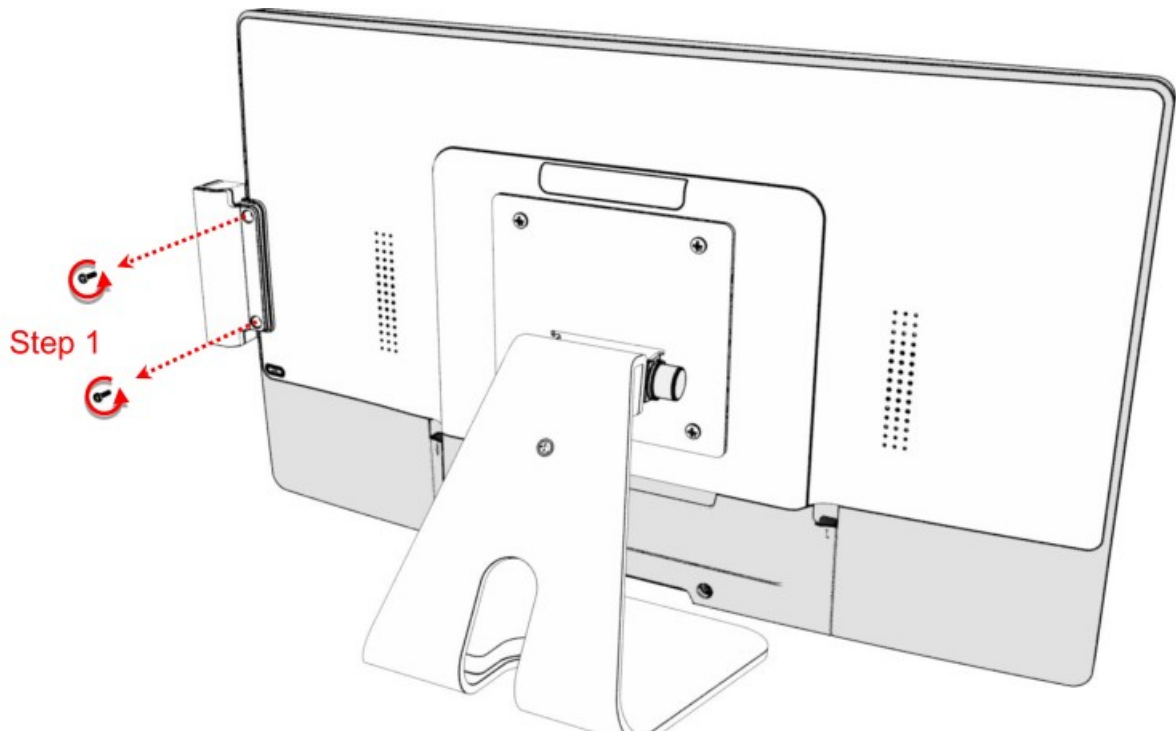


Step 4: Install the two M3 screws to fasten the MSR module. Step 4



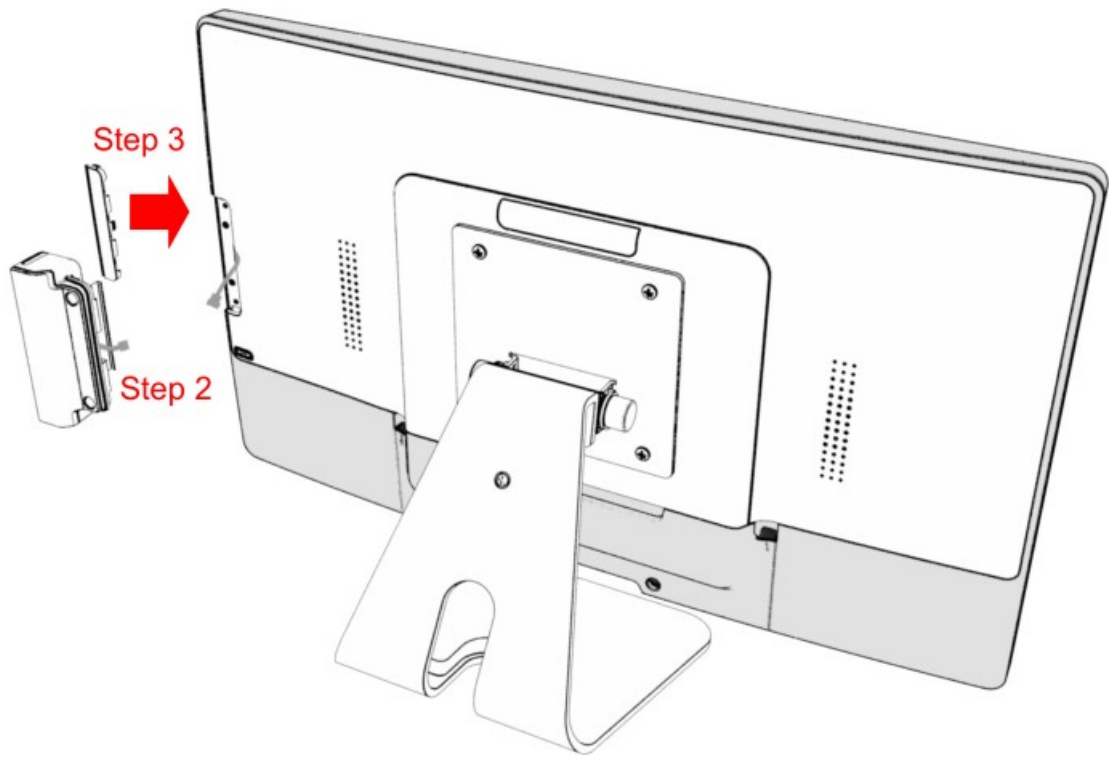
#### 2.4.7 Remove the MSR Module

Step 1: Loosen the screws.



Step 2: Remove the MSR module cable from the touch computer.

Step 3: To assemble the side cover.



## Appendix

Declaration of the Presence Condition of the Restricted Substances Marking

設備名稱：觸控電腦

型號（型式）：IC-215P-AW3

Equipment name: Touch Computer

Type designation (Type): IC-215P-AW3

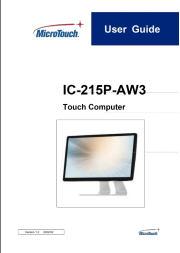
單元 Unit	限用物質及其化學符號 Restricted substances and its chemical symbols					
	鉛 Lead (Pb)	汞 Mercury (Hg)	鎘 Cadmium (Cd)	六價鉻 Hexavalent chromium (Cr <sup>+6</sup> )	多溴聯苯 Polybrominated biphenyls (PBB)	多溴二苯醚 Polybrominated diphenyl ethers (PBDE)
塑膠零件 Plastic Parts	○	○	○	○	○	○
金屬零件 Metal Parts	—	○	○	○	○	○
線纜和電纜組件 Cable component	—	○	○	○	○	○
液晶面板 LCD Panel	—	○	○	○	○	○
觸控式螢幕面板 Touch Panel	—	○	○	○	○	○
電路板總成 PCBA	—	○	○	○	○	○
軟體(光碟片等) Software	○	○	○	○	○	○

Note 1 : “Exceeding 0.1 wt %” and “exceeding 0.01 wt %” indicate that the percentage content of the restricted substance exceeds the reference percentage value of presence condition. °

Note 2 : “○” indicates that the percentage content of the restricted substance does not exceed the percentage of reference value of presence.

Note 3 : The “—” indicates that the restricted substance corresponds to the exemption.

## Documents / Resources

 <p>MicroTouch User Guide</p> <p>IC-215P-AW3 Touch Computer</p>	<p><a href="#">MicroTouch IC-215P-AW3 Touch Computer [pdf] User Guide</a> IC-215P-AW3 Touch Computer, IC-215P-AW3, Touch Computer</p>
--	---