



microtech USB Footswitch for Windows Instructions

[Home](#) » [microtech](#) » microtech USB Footswitch for Windows Instructions 

Contents

- [1 microtech USB Footswitch for Windows](#)
- [2 Product Information](#)
- [3 Product Usage Instructions](#)
- [4 How to use foot switch pedal with MDS software.](#)
- [5 Documents / Resources](#)
 - [5.1 References](#)
- [6 Related Posts](#)



microtech USB Footswitch for Windows



Product Information

The foot switch pedal is designed to be used with the MDS software. It allows users to control various functions and perform actions using their feet instead of their hands. The pedal can be connected to a computer via USB and is compatible with Windows operating systems. The pedal also supports Bluetooth connectivity for wireless usage. To use the foot switch pedal effectively, you will need to download and install the latest MDS software from the provided link: <http://software.pcsensor.com>.

Product Usage Instructions

1. Download the MDS software from the provided link and install it on your computer.
2. Connect the foot switch pedal to your computer using the USB cable provided.
3. Launch the MDS software on your computer.
4. Configure the desired key combinations or actions you want to assign to the foot switch pedal using the software.
5. Save the setup or configurations to the foot switch pedal.
6. Once the setup is saved, you can disconnect the foot switch pedal from the computer.
7. For wireless usage, enable Bluetooth on your computer and pair it with the foot switch pedal.
8. You can now use the foot switch pedal to control various functions and perform actions as configured in the MDS software.

How to use foot switch pedal with MDS software.

Software (for Windows) download link: <http://software.pcsensor.com>

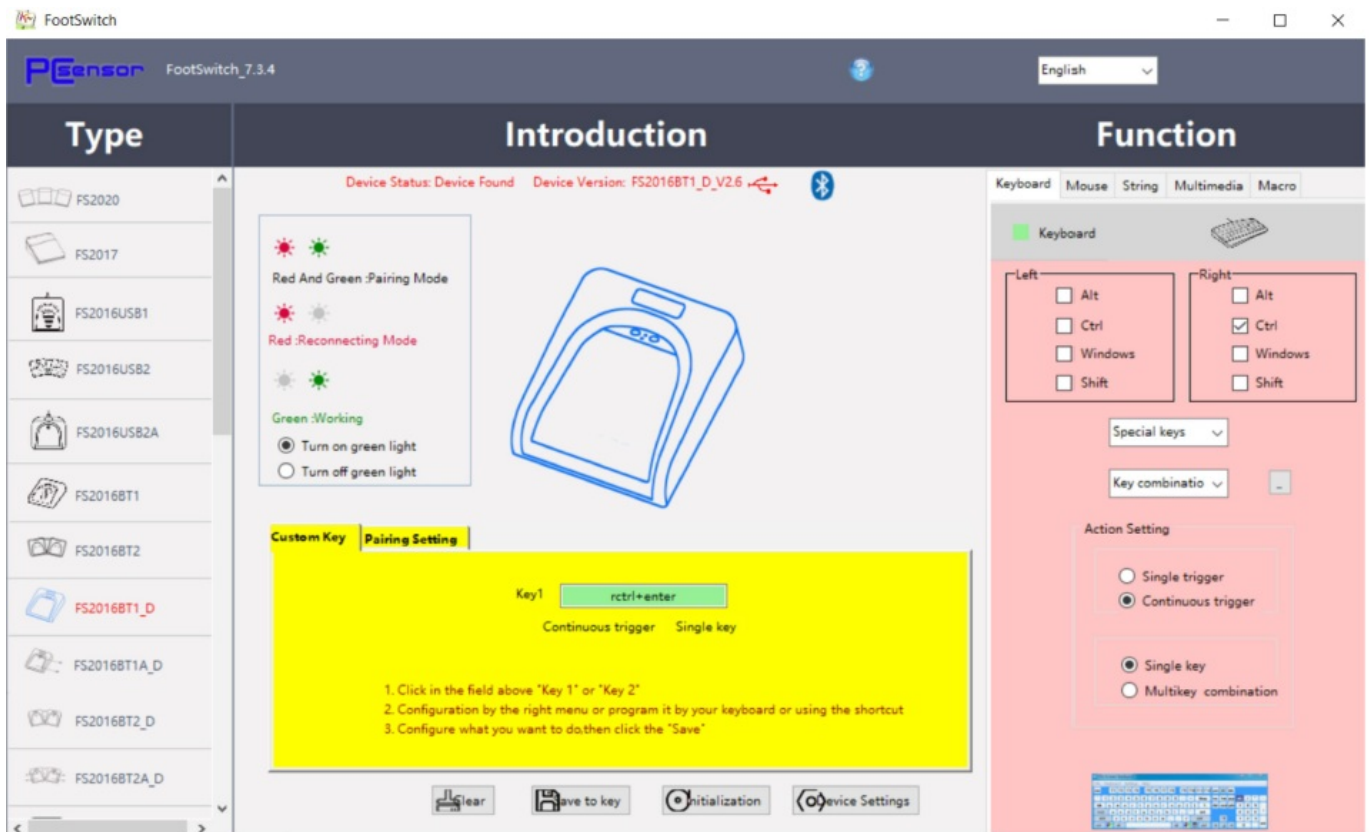
Download and install the latest software,the setting steps are as follows:

To setup keys on your pedal, connect via USB and save combinations to your foot switch, after setup you can use BLUETOOTH connection.

1. Connect the device to your computer via USB Cable.

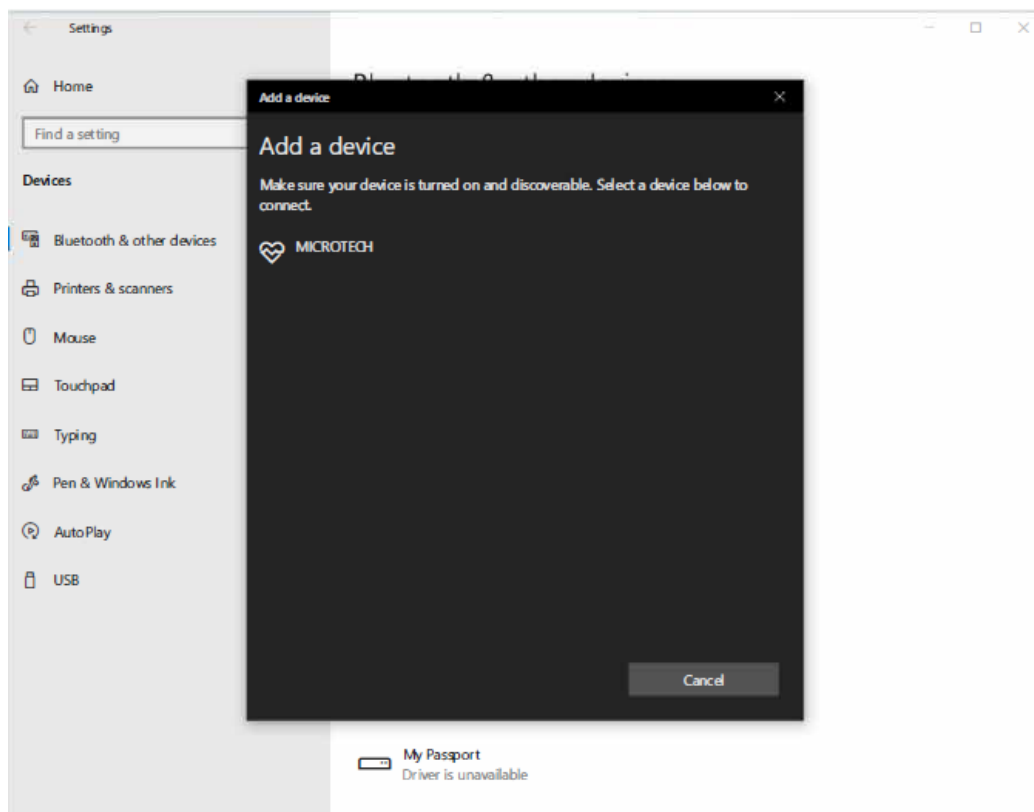


2. Run installed Foot switch software and check status of your device.
3. On "Custom Key" tab you need to hold Ctrl+Enter keys at the same time.
4. Click "Save to key" to complete the setting.

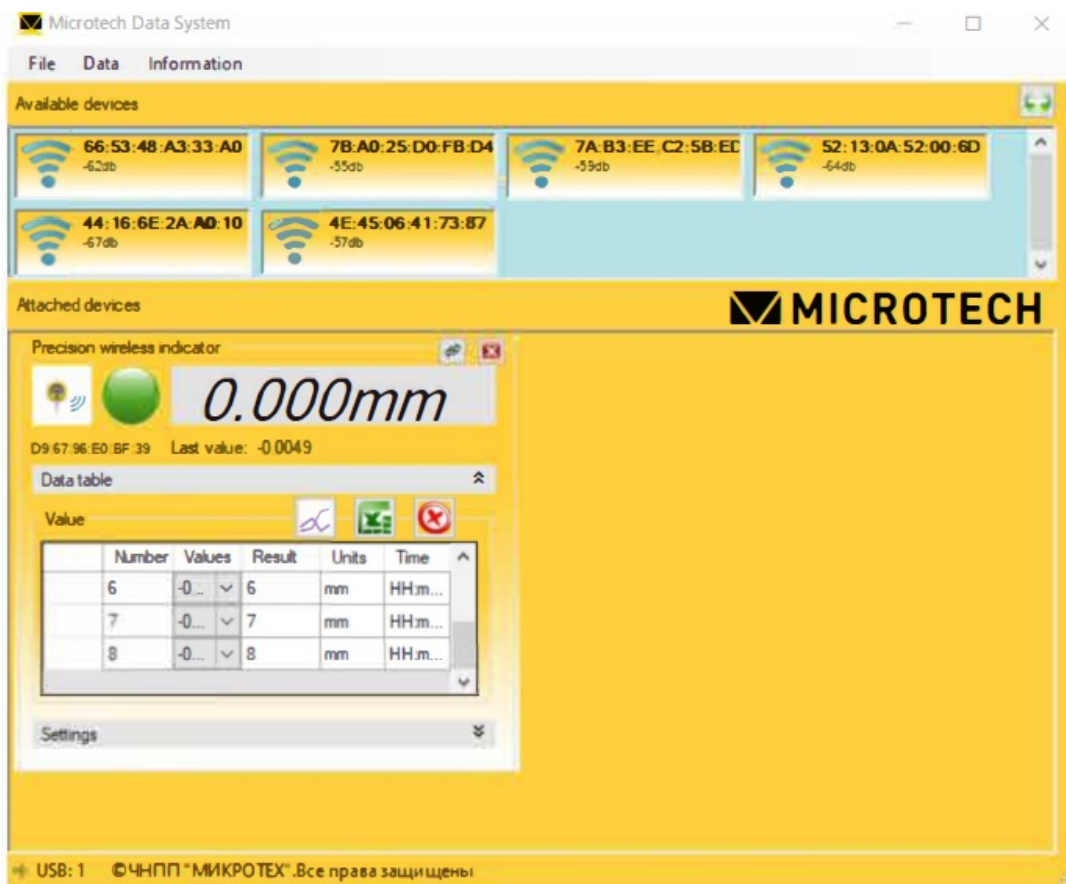


After setup steps you can use BLUETOOTH connection.


Go to the Settings —+ Devices —+ Add a new BLUETOOTH device, and pair it with your PC.



Launch MDS App and save measurements values by bushing the foot switch pedal



Documents / Resources

	<p>microtech USB Footswitch for Windows [pdf] Instructions</p> <p>USB Footswitch for Windows, Footswitch for Windows, Windows</p>
---	---

References

- [PCsensor RDingtech RDing](#)

[Manuals+.](#)