



MICROTECH IP67 Offset Caliper User Manual

[Home](#) » [microtech](#) » MICROTECH IP67 Offset Caliper User Manual 

Contents

- [1 MICROTECH IP67 Offset Caliper](#)
- [2 Product Information](#)
- [3 Product Usage Instructions](#)
- [4 OPERATION INSTRUCTIONS](#)
- [5 WIRELESS DATA TRANSFER](#)
- [6 Documents / Resources](#)
 - [6.1 References](#)

MICROTECH

MICROTECH IP67 Offset Caliper



Product Information

- **Product Name:** Offset Caliper IP67 Microtech
- **Manufacturer:** Microtech
- **Website:** www.microtech.ua
- **Calibration:** ISO 17025:2017
- **Certification:** ISO 9001:2015
- **Measurement Range:** 0-120 mm
- **Resolution:** 0.01 mm
- **Moving Part:** 60 mm

Product Usage Instructions

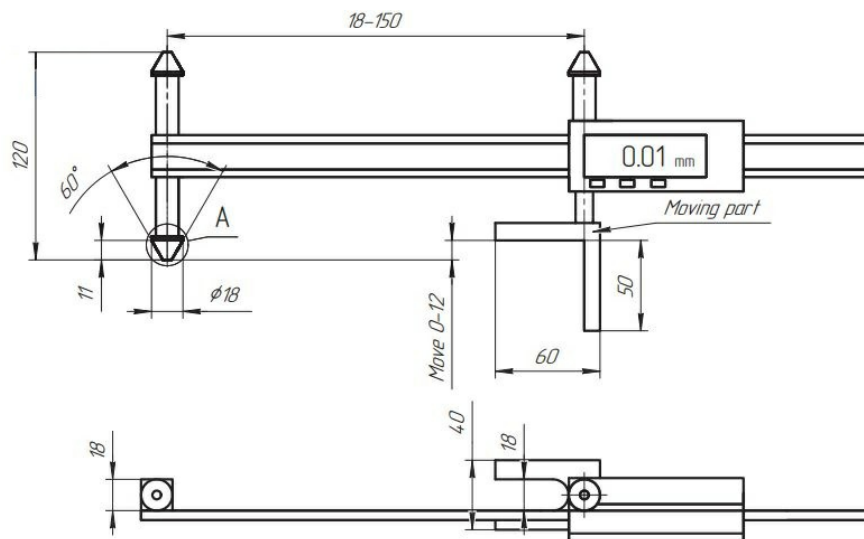
1. Ensure that the measuring surface of the caliper is fully in contact with the object being measured.
2. Avoid the following while working with the caliper:

- Scratches on the measuring surfaces
- Measuring the size of an object in the process of machining
- Shocks or dropping the caliper
- Bending of the rod or other surfaces

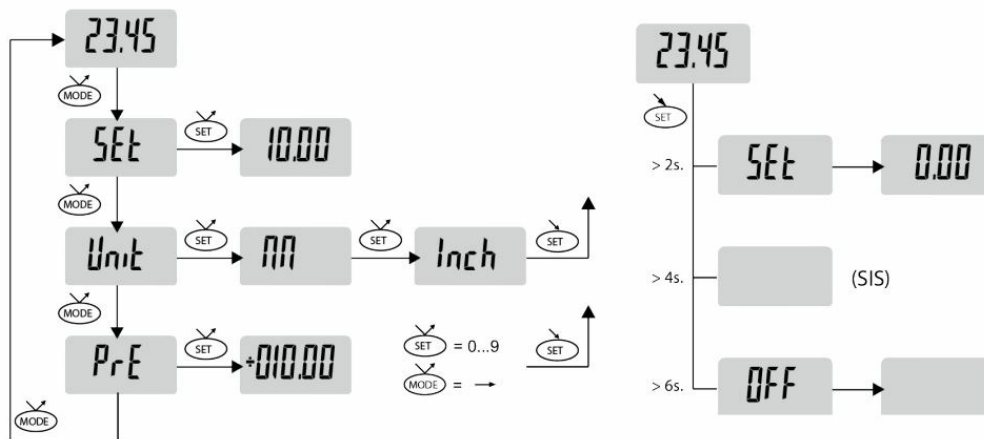
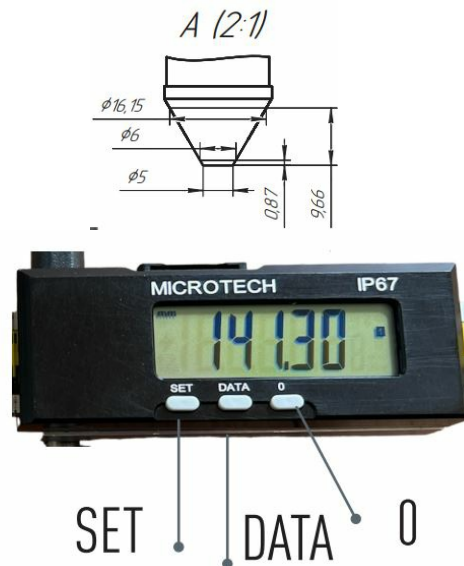
Wireless Data Transfer:

Microtech recommends using the Economy Mode for wireless data transfer.

MICROTECH



- D=6.00 mm – Tmin (thickness of measured material) = 0,87 mm
- D=16.15 mm – Tmin (thickness of measured material) = 9.66 mm



OPERATION INSTRUCTIONS

Wipe with a clean cloth, soaked in gasoline, measuring surface of the frame and gauge calipers to remove anti-corrosion oil. Then wipe them with a clean dry cloth. If necessary, open the battery cover; insert the battery (type CR2032) according to the polarity of the electrodes. This caliper has Autoswitch on/ off function:

- move electronic module for switch on caliper
- after 10 minutes without any moving caliper will switch off
 - During the measurement, measuring jaws should to sum to the measured object without knocking.
 - During the measurement avoid warps of measuring surfaces of the instrument. Measuring surface must be fully in contact with the measurement object

WARNING! IN THE PROCESS OF WORKING WITH CALIPERS SHOULD BE AVOIDED: Scratches on the measuring surfaces; Measuring the size of object in the process of machining; Shocks or dropping, avoid bending of rod or other surfaces.

WIRELESS DATA TRANSFER

MICROTECH Wireless caliper equipped with Built-in Wireless data output module for transfer measuring results to Android, iOS devices or Windows PC

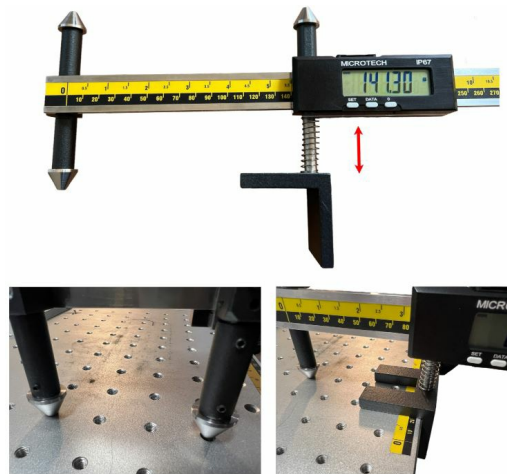
- For the SWITCH ON wireless module push DATA button (2 sec);
- Wireless logo on caliper screen, when Wireless module switch on;

- After connection caliper to MDS software, you'll see repetition of calipers screen indication on MDS software;
- Press once DATA button on caliper or press on MDS software results window for SAVE measuring result to software;
- Activate ECONOMY MODE throw MDS software. Data will be transfered only by DATA button push (Wireless indicator bliming only by button push).
- For SWITCH OFF wireless module press a DATA button (2 sec) or it will be switched off automatically during 10 minutes non use (For economy mode not necessary switch off Wireless module).

MICROTECH Wireless instruments has 2 modes of data transfer:

1. **STANDART MODE:** (non stop data transfer 4data/sec, battery work in non stop data transfer up to 120h)
2. **ECONOMY MODE:** (GATT) (data transfer only by Wireless button push, battery work in this mode up to 12 month (100 data transfer a day), activating throw software)


MICROTECH RECOMMEND TO USE ECONOMY MODE



Calibration ISO: 17025:2017
ISO: 9001:2015

WWW.MICROTECH.UA

Documents / Resources

	<p>MICROTECH IP67 Offset Caliper [pdf] User Manual 120, 11, 18-150, IP67, IP67 Offset Caliper, Offset Caliper, Caliper</p>
---	--

References

-  [Main page - MICROTECH - Innovative measuring instruments](#)

