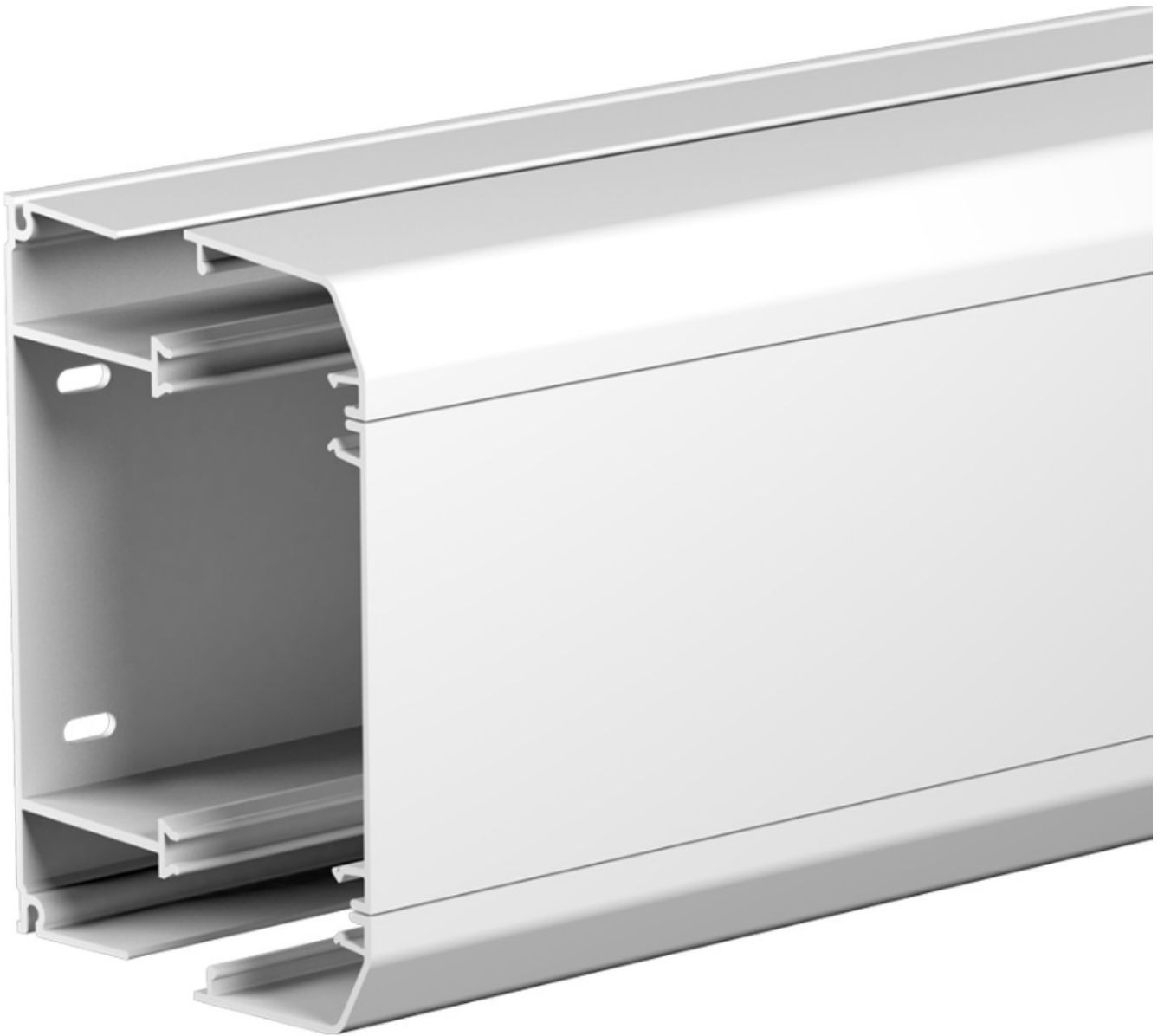




# MicroTag MT20 Compartment Dado Trunking Instructions

[Home](#) » [MicroTag](#) » MicroTag MT20 Compartment Dado Trunking Instructions 

**MicroTag MT20 Compartment Dado Trunking**



## Contents

- 1 Please read carefully the product instruction before using it
- 2 Product Instruction
- 3 Product List
- 4 Charging Instruction
- 5 Wearing Method
- 6 Guidance for Use
- 7 After- Sales Service Certification
- 8 FCC Requirement
- 9 Customer Support
- 10 Documents / Resources
  - 10.1 References

**Please read carefully the product instruction before using it**

Thank you for buying and using MicroTag. For your safety and interest, please read carefully the product instruction before using it. If you suffer damage of health or wealth or other losses, as a result of that you do not follow this instruction, Micro Team will not be responsible for that.

## Product Instruction

The copyright, trademark, and font size of the instruction manual belong to Micro Team and its affiliates; If the content of the instruction manual is inconsistent with the actual product, the actual product shall prevail; If you have any objections to any contents or terms of the manual, please submit written objections to Micro Team within seven days after purchasing of the product. Otherwise it is deemed that you have agreed, understood and accepted all the contents of the manual.

## Product List

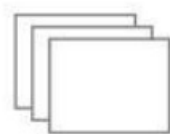
- MicroTag x1



- Charging Cable x1



- Instruction Manual x1



(There will be differences between different models)

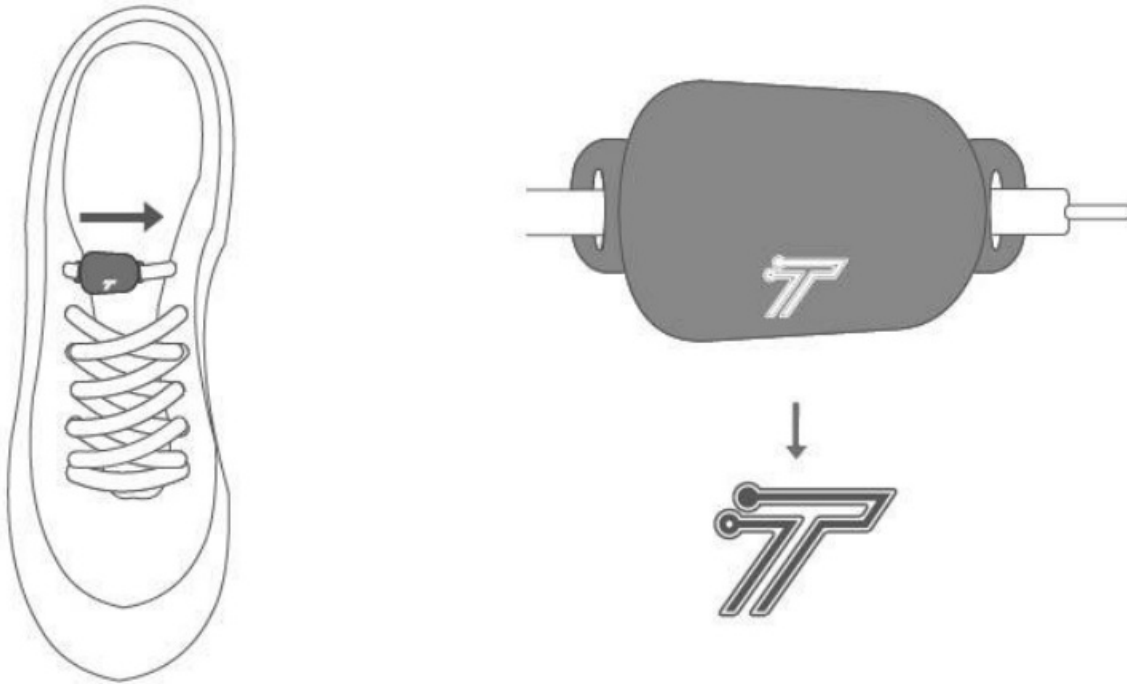
## Charging Instruction

MicroTag can be charged using a SV magnetic power adapter; If the product does not respond when being charged, please slightly adjust its position until the red light is on.



When the product is being charged, the reel light is always on and the power can reach 80% in half an hour. (To prevent damage to the battery, it is charged at least once a month. Otherwise, no related hardware warranty will be provided)

## Wearing Method



Wear it on the out instep area near the knotted laces, with the logo pointing to the toe.

## Guidance for Use

### 1. Install Micro Tag APP

Search "Micro Tag" in the app store, download and install Micro Tag APP

### 2. Login

Register an account and complete the login. Follow the prompts to complete your height, weight and other information.

### 3. Bind MicroTag

Method 1: Click "Intelligent Device" <Search the Bluetooth<Bind

Method 2: Click "Intelligent Device" <Scan the Code<Bind

### 4. Create a Match

Click "Create a Match" <Select "Football" <Click "Create Team"< Add "Team Logo" and "Team Name"> Create>

Click "Opponents"> Click "\$" in the upper right corner> Add "Team Logo" and "Team Name"> Create> Set

"Match Time", "Football Field", "Match System"> Create

Start a Match: Start the Hardware>Wear Micro Tag Correctly>Record the "Match Record Data">Keep the Data  
>End the Match>See the Data

Reserve a Match: Home>Latest Match>Start the Device>Wear Microtag Correctly>Record the "match record data">Keep the Data>End the Match>See the Data

### 5. See the Data

Click "Data" <Completed<See the Data

### 6. Share the Data

Data>Completed>See the Data>Click the share icon in the upper right corner

### 7. Unbind the Device

Click "Home" <MicroTag <Unbind

## After- Sales Service Certification

- This certification only applies to the circumstance listed above.
- Please keep this certification well and show it with relevant invoice when you enjoy the after-sale services.
- This certification needs to be stamped by the seller to be effective.

## FCC Requirement

Any changes or modifications not expressly approved by the party responsible for compliance could void the user's authority to operate the equipment.

This device complies with Part 15 of the FCC Rules. Operation is subject to the following two conditions:

1. this device may not cause harmful interference, and
2. this device must accept any interference received, including interference that may cause undesired operation.

Note: This equipment has been tested and found to comply with the limits for a Class B digital device, pursuant to Part 15 of the FCC Rules. These limits are designed to provide reasonable protection against harmful interference in a residential installation. This equipment generates, uses, and can radiate radio frequency energy, and if not installed and used in accordance with the instructions, may cause harmful interference to radio communications. However, there is no guarantee that interference will not occur in a particular installation. If this equipment does cause harmful interference to radio or television reception, which can be determined by turning the equipment off and on, the user is encouraged to try to correct the interference by one or more of the following measures:

- Reorient or relocate the receiving antenna.
- Increase the separation between the equipment and receiver.
- Connect the equipment into an outlet on a circuit different from that to which the receiver is connected.
- Consult the dealer or an experienced radio/TV technician for help.

## Customer Support

Micro Team

[support@microteam.cn](mailto:support@microteam.cn)[microteam.cn](http://microteam.cn)



**MicroTag**

---

## Documents / Resources



[MicroTag MT20 Compartment Dado Trunking](#) [pdf] Instructions  
MT20 Compartment Dado Trunking, MT20, Compartment Dado Trunking, Dado Trunking

## References

- [User Manual](#)

[Manuals+](#), [Privacy Policy](#)

This website is an independent publication and is neither affiliated with nor endorsed by any of the trademark owners. The "Bluetooth®" word mark and logos are registered trademarks owned by Bluetooth SIG, Inc. The "Wi-Fi®" word mark and logos are registered trademarks owned by the Wi-Fi Alliance. Any use of these marks on this website does not imply any affiliation with or endorsement.