




MICROSWISS M3110
FlowTech Hotend



MICROSWISS M3110 FlowTech Hotend Installation Guide

[Home](#) » [MICROSWISS](#) » MICROSWISS M3110 FlowTech Hotend Installation Guide 

Contents

- [1 MICROSWISS M3110 FlowTech Hotend](#)
- [2 Product Usage Instructions](#)
- [3 INSTALLATION INSTRUCTIONS](#)
- [4 SAFETY / PREPARATION](#)
- [5 CALIBRATE](#)
- [6 Documents / Resources](#)
 - [6.1 References](#)
- [7 Related Posts](#)



MICROSWISS M3110 FlowTech Hotend



Product Specifications

- SKU: M3110
- Product: Micro Swiss FlowTech™ Hotend for Sovol SV08
- Tools Required: 2.0mm Allen wrench, 2.5mm Allen wrench
- Components in the Box:
 - Heatsink
 - Copper Thermal Adapter
 - 0.4mm Plated Brass Nozzle
 - Titanium Mounting Screws (2x)
 - Heater Core
 - Silicone Sock

Product Usage Instructions

Installation Steps

1. Remove the fan shroud
2. Step 1
3. Step 2
4. Step 3
5. Step 4
6. Step 5

7. Step 6
8. Step 7
9. Step 8
10. Step 9
11. Step 10

Note: Include any specific notes or precautions related to the installation process here.

Frequently Asked Questions (FAQ):

How do I clean the Micro Swiss FlowTech™ Hotend?

To clean the hotend, disassemble it carefully following the provided instructions. Use a soft brush or compressed air to remove any debris or filament residue.

Can I use different nozzle sizes with this hotend?

Yes, you can use compatible nozzle sizes with the Micro Swiss FlowTech™ Hotend, but ensure they are securely installed and properly calibrated for optimal performance.

Micro Swiss FlowTech™ Hotend for Sovol SV08

INSTALLATION INSTRUCTIONS

Tools Required

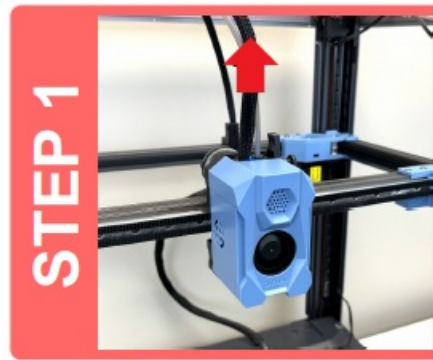
2.0mm Allen wrench
2.5mm Allen wrench

What's in the box

- Heatsink
- Copper Thermal Adapter 0.4mm
- Plated Brass Nozzle
- Titanium Mounting Screws (2x)
- Heater Core
- Silicone Sock

SAFETY / PREPARATION

- Unload the filament from the printer.
- Allow the hotend to cool down to room temperature.
- Power off the printer.
- Disconnect the power cable.



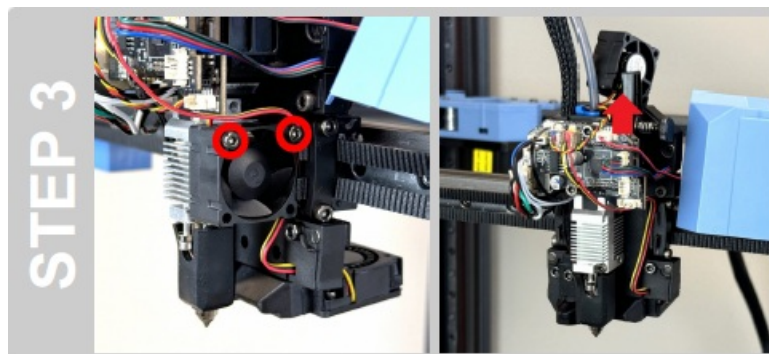
REMOVE THE FAN SHROUD

- Pull the magnetic fan shroud off of the print head.
- Set the fan shroud on top of the aluminum extrusion. Leave the connector attached to the breakout board.



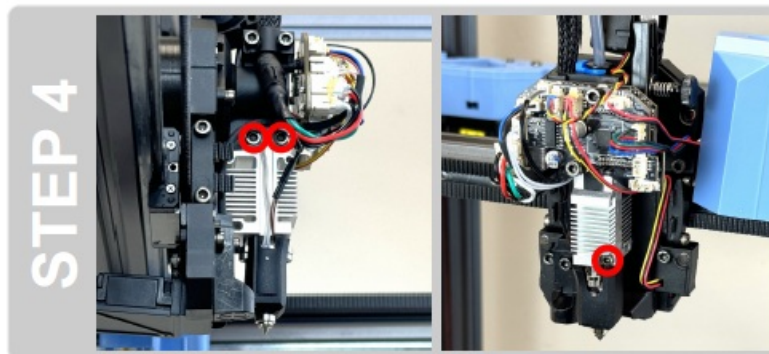
DETACH THE FAN

- Remove the two screws securing the cooling fan to the heatsink.(2.5mm Allen wrench)
 - Set the fan on top of the print head.
- Leave the fan connector attached to the breakout board.



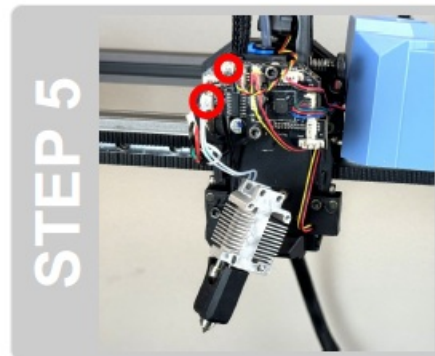
UNFASTEN THE ORIGINAL HOTEND

- Remove the two screws from the top left side of the heatsink.(2.5mm Allen wrench)
- Remove the screw located on the front of the heatsink. (2.0mm Allen wrench)



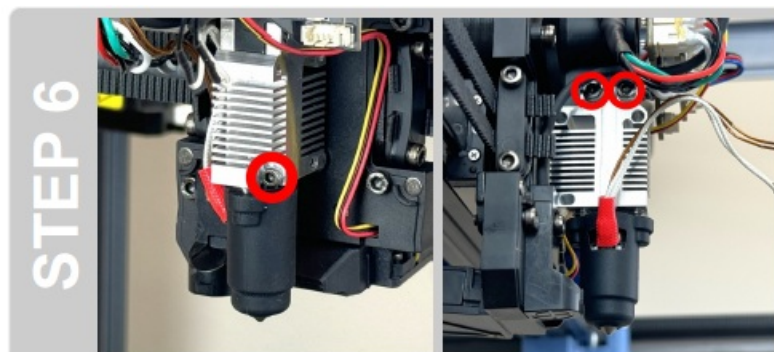
DISCONNECT THE CABLES

Disconnect the original hotend's thermistor and heater cables from the breakout board.



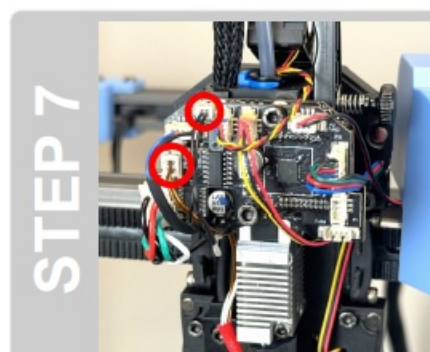
FASTEN THE FLOWTECH HOTEND

Attach the FlowTech hotend to the carriage using the three original screws.(2.0mm and 2.5mm Allen wrenches)
Use the (M2.5 x 30mm) screw in the front of the heatsink and two (M3 x 16mm) screws in the top left side of the heatsink.



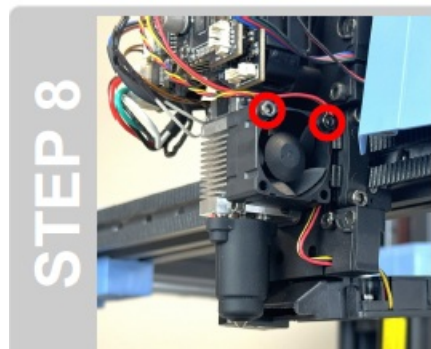
CONNECT THE FLOWTECH HOTEND

Connect the FlowTech hotend's heater and thermistor cables to the matching ports on the breakout board.



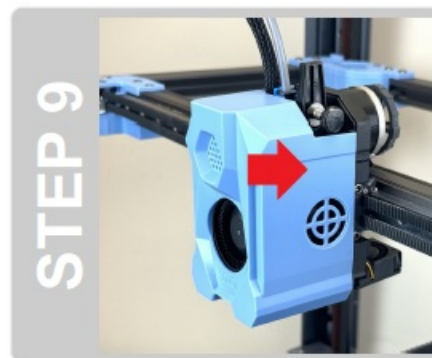
ATTACH THE FAN

Attach the cooling fan to the FlowTech heatsink using the two original screws.(2.5mm Allen wrench)
Use the two (M2.5 x 18mm) screws.



INSTALL THE FAN SHROUD

- Tuck the cables in so that they do not get in the way of the fan shroud.
- Reinstall the magnetic fan shroud.



CALIBRATE

- Connect the power cable.
- Power on the 3D printer.
- Navigate the printer screen menus to “Leveling” and then select “Calibrate Zoffset”.
- Wait for the calibration process to complete.

Installation Complete!



NOTE


NOZZLE REPLACEMENT PROCEDURE

The FlowTech nozzles can be swapped while the hot end is at room temperature.

- Pull the silicone sock off of the heater core.

- Use a 7mm wrench to unscrew the nozzle.
- Install and tighten the new nozzle until snug (15 inch-pounds of torque) using a 7mm wrench.
- Replace the silicone sock.

Documents / Resources

	<p>MICROSWISS M3110 FlowTech Hotend [pdf] Installation Guide M3110 FlowTech Hotend, M3110, FlowTech Hotend, Hotend</p>
---	--

References

- [User Manual](#)

Manuals+. [Privacy Policy](#)

This website is an independent publication and is neither affiliated with nor endorsed by any of the trademark owners. The "Bluetooth®" word mark and logos are registered trademarks owned by Bluetooth SIG, Inc. The "Wi-Fi®" word mark and logos are registered trademarks owned by the Wi-Fi Alliance. Any use of these marks on this website does not imply any affiliation with or endorsement.