



microsonic hps Plus Series Ultrasonic Level Sensors User Manual

[Home](#) » [microsonic](#) » microsonic hps Plus Series Ultrasonic Level Sensors User Manual 

microsonic hps Plus Series Ultrasonic
Level Sensors User Manual

microsonic



Operating Manual

hps+ Ultrasonic Sensors for application in overpressure with one analogue output and one switching output

hps+25/DIU/TC/E/G1

hps+35/DIU/TC/E/G1

hps+130/DIU/TC/E/G1

hps+340/DIU/TC/E/G2

hps+340/DIU/TC/G2

Product description

- The hps+ sensor measures the level in a vessel in up to 6 bar overpressure contactless. The G1 and G2 threaded pipe end permits the mounting and sealing of the sensor in a flange of the vessel. At the analogue output a signal proportional to the level is created and the pnp switching output is set according to the adjusted detect distance.
- The surfaces of the ultrasonic transducers of the hps+ sensors are protected by a PTFE-film and sealed with a FFKM-O-ring against the sensor housing. Therefore the surface of the ultrasonic transducer can be cleaned from caking's or spots.
- The sensor automatically detects the load put to the analogue output and switches to current output or voltage output respectively.
- All settings are done with two pushbuttons and a three-digit LED-display (Touch Control).
- Light emitting diodes (three-colour LEDs) indicate all operation conditions.
- Choosing between rising and falling output characteristic as well as output function NOC and NCC is possible.
- The sensors are adjustable manually using the numerical LED-display or may be trained using Teach-in processes.
- Useful additional functions are set in the Add-on-menu.
- Using the LinkControl adapter (optional accessory) all Touch Control and additional sensor parameter settings can be adjusted by a Windows® Software.

Safety Notes

- Read the operating instructions prior to start-up.

- Connection, installation and adjustment works may only be carried out by expert personnel.
- No safety component in accordance with the EU Machine Directive, use in the area of personal and machine protection not permitted

Proper Use

hps+ ultrasonic sensors are used for non-contact detection of objects.

The hps+ sensors indicate a **blind zone**, in which the distance cannot be measured. The **operating range** indicates the distance of the sensor that can be applied in normal atmospheric pressure with sufficient function reserve.

Installation

- Assemble the sensor at the installation location.
- If necessary seal the sensor with the enclosed Viton® O-ring (34 x 2,5 mm or 60 x 4 mm) against the flange.
- Plug in the connector cable to the M 12 connector, see Fig. 1.

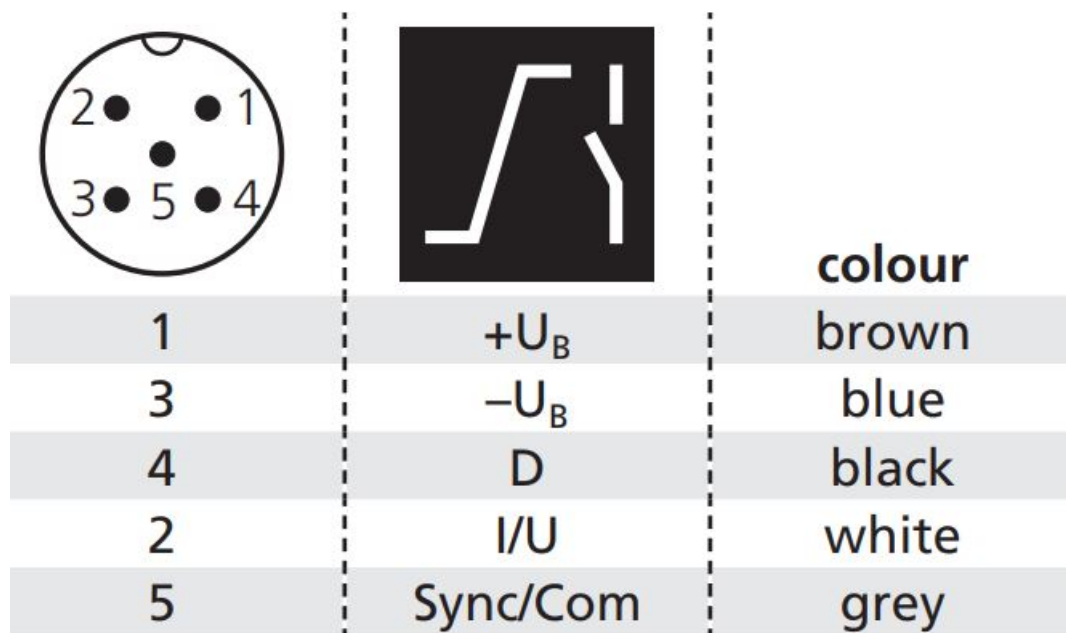


Fig. 1: Pin assignment with view onto sensor plug and colour coding of the microsonic connection cable

Start-up

- Connect the power supply.
- Set the parameters of the sensor manually via TouchControl (see Fig. 2 and Diagram 1)
- or use the Teach-in procedure to adjust the detect points (see Diagram 2).

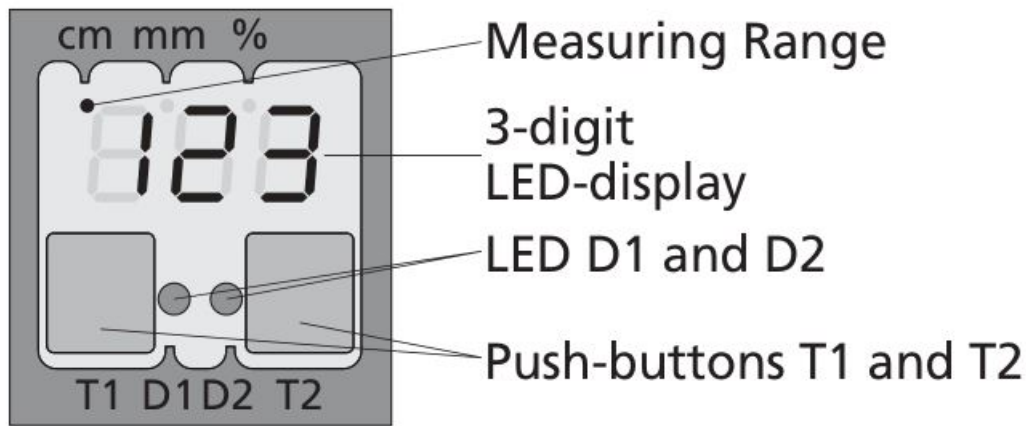


Fig. 2: TouchControl/LED display

Factory setting

hps+ sensors are delivered factory made with the following settings:

- Rising analogue characteristic
- Window limits for the analogue output set to blind zone and operating range
- Switching output on NOC
- Detecting distance at operating range
- Measurement range set to maximum range
- Sensitivity at Normal preassure

Maintenance

hps+ sensors work maintenance free. Small amounts of dirt on the surface do not influence function. Thick layers of dirt and caked-on dirt affect the sensor function and therefore must be removed.

Notes

- In operation in overpreassure it is recommended to adjust the sensitivity of the hps+ sensor: choose the parameter A14 in the Add-on menu and set it to sensitivity E2 for atmospheric preassure from 1 to 3 bar or to sensitivity E3 for atmospheric preassure >3 bar.
- hps+ sensors have internal temperature compensation. Because the sensors heat up on their own, the temperature compensation reaches its optimum working point after approx. 30 minutes of operation.
- If an object is within the set window limits of the analogue output, then LED D1 lights up green, if the object is outside the window limits, then LED D1 lights up red.
- The load put to the analogue output is detected automatically when turning supply voltage on.
- During normal operating mode, a yellow LED D2 signals that the switching output has connected.
- During normal operating mode, the measured distance value is displayed on the LED-indicator in mm. Alternatively a percentage scale may be set in the add-on menu. In this connection 0 % and 100 % correspond to the set window limits of the analogue output.
- During Teach-in mode, the hysteresis loops are set back to factory settings.
- If no objects are placed within the detection zone the LED-indicator shows »— — —«.

- If no push-buttons are pressed for 20 seconds during parameter setting mode the made changes are stored and the sensor returns to normal operating mode.
- The sensor can be reset to its factory setting, see »Key lock and factory setting«, Diagram 3.

Show parameters

- In normal operating mode shortly push T1. The LED display shows »PAr.«

Each time you tap push-button T1 the actual settings of the analogue output are shown.

Diagram 1: Set sensor parameters numerically using LED display

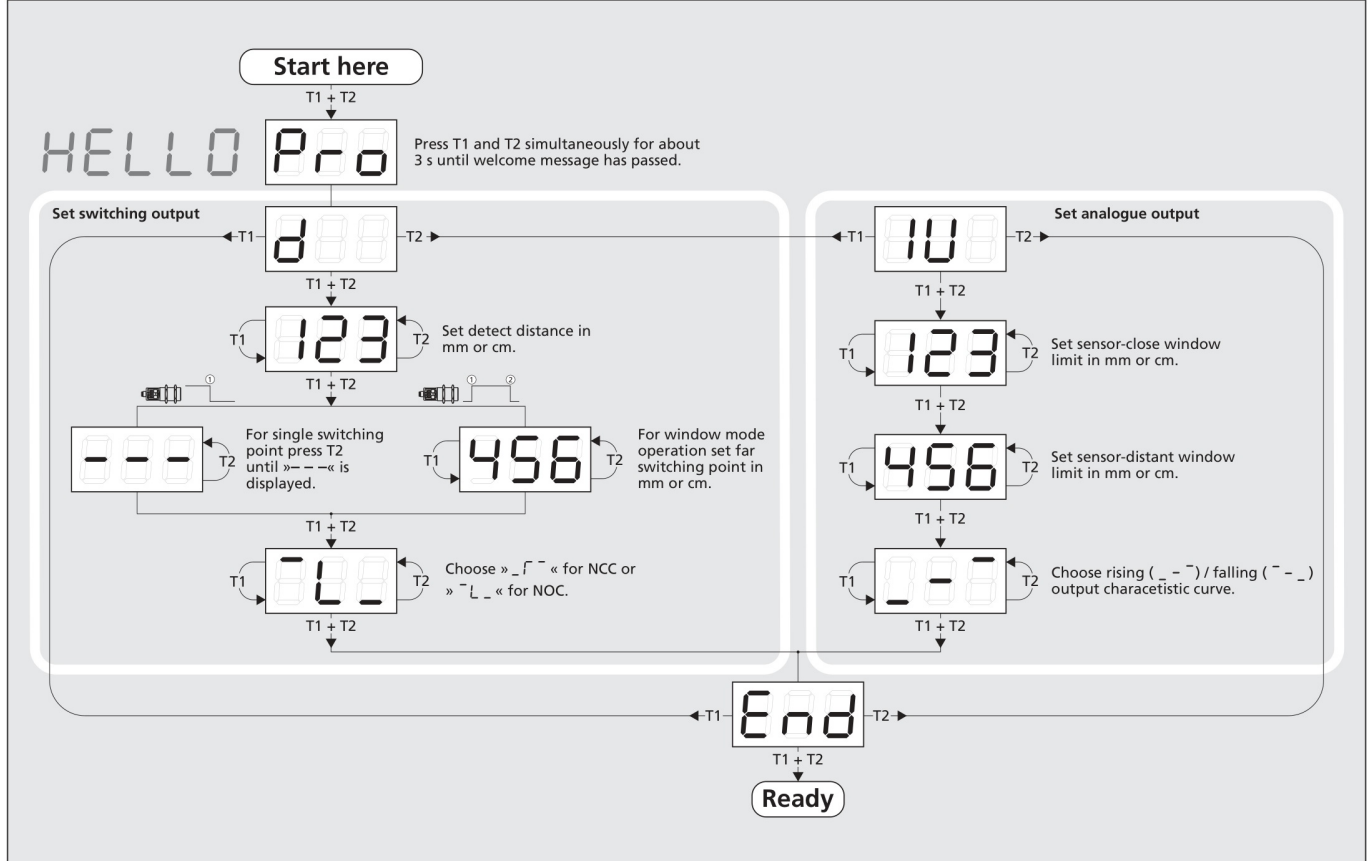


Diagram 2: Set sensor parameters via Teach-in procedure

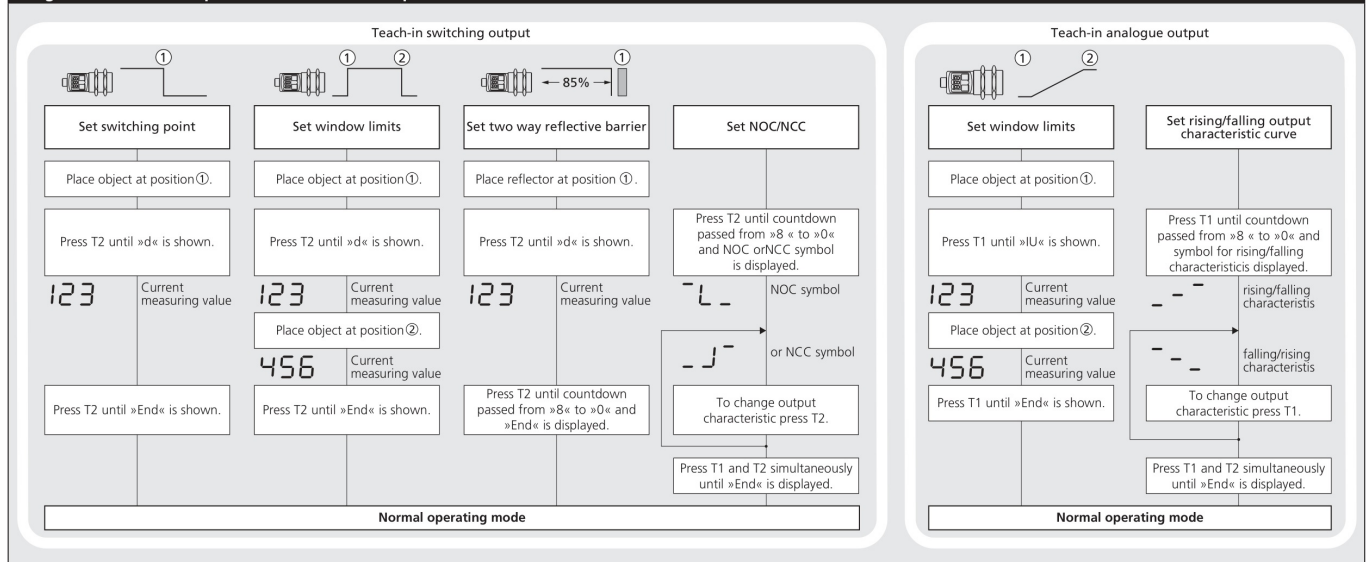


Diagram 3: Key lock and factory setting

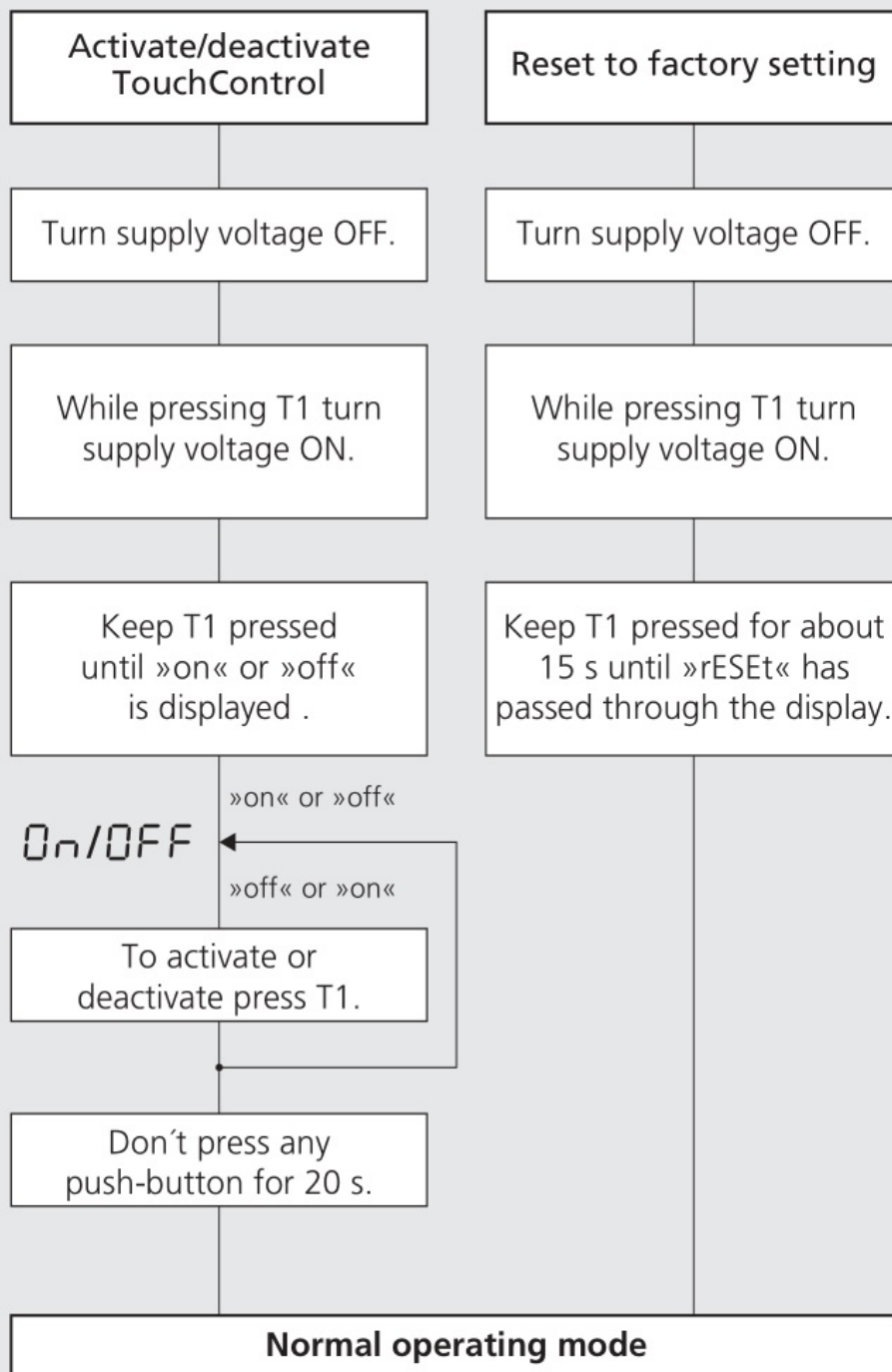
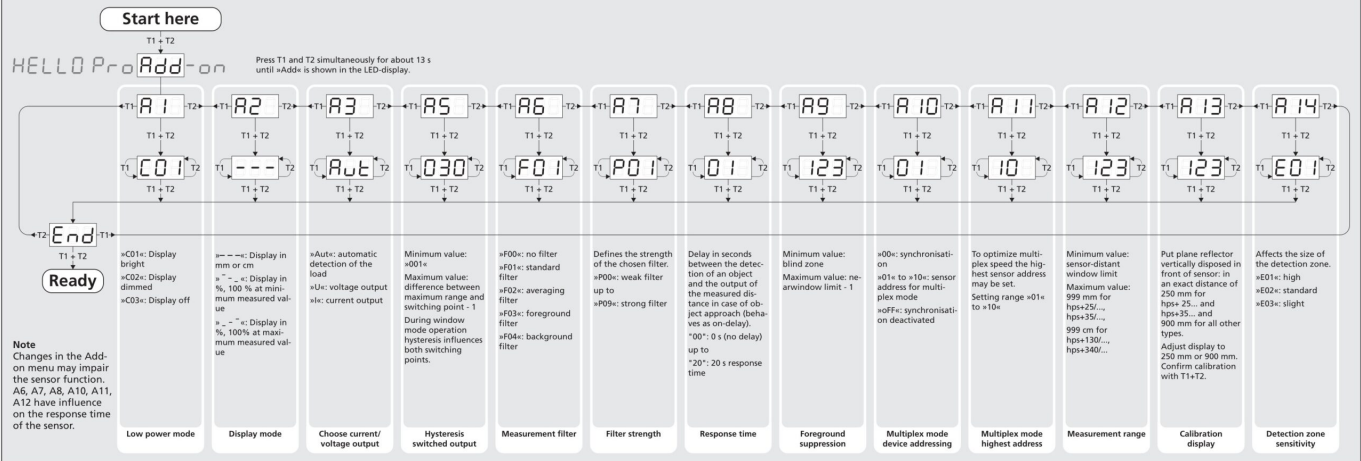


Diagram 4: Useful additional functions in Add-on menu (for experienced users only, settings not required for standard applications)



Technical data

	hps+25... 36 width A/F	hps+35... 36 width A/F	hps+130... 36 width A/F	hps+340... 75 width A/F	hps+340... 75 width A/F
Blind zone	0 to 30 mm	0 to 85 mm	0 to 200 mm	0 to 350 mm	0 to 350 mm
Operating range	250 mm	350 mm	1,300 mm	3,400 mm	3,400 mm
Maximum range	990 mm	1,500 mm	5,000 mm	8,000 mm	8,000 mm
Angle of beam spread	see detection zone	see detection zone	see detection zone	see detection zone	see detection zone
Transducer frequency	320 kHz	320 kHz	180 kHz	120 kHz	120 kHz
Resolution, sampling rate	0.025 mm	0.18 mm	0.18 mm	0.18 mm	0.18 mm
Reproducibility	±0.15 %	±0.15 %	±0.15 %	±0.15 %	±0.15 %
Accuracy	Temperature drift internal compensated, ±2 % can be deactivated ¹⁾ (0,17 %/K without compensation)	Temperature drift internal compensated, ±2 % can be deactivated ¹⁾ (0,17 %/K without compensation)	Temperature drift internal compensated, ±2 % can be deactivated ¹⁾ (0,17 %/K without compensation)	Temperature drift internal compensated, ±2 % can be deactivated ¹⁾ (0,17 %/K without compensation)	Temperature drift internal compensated, ±2 % can be deactivated ¹⁾ (0,17 %/K without compensation)
Detection zones					
Operating voltage U_s	9 to 30 V DC, short-circuit-proof	9 to 30 V DC, short-circuit-proof	9 to 30 V DC, short-circuit-proof	9 to 30 V DC, short-circuit-proof	9 to 30 V DC, short-circuit-proof
Voltage ripple	±10 %	±10 %	±10 %	±10 %	±10 %
No-load supply current	≤ 80 mA	≤ 80 mA	≤ 80 mA	≤ 80 mA	≤ 80 mA
Ambient pressure	up to 6.0 bar	up to 6.0 bar	up to 6.0 bar	up to 6.0 bar	up to 6.0 bar
Housing	Stainless steel 1.4571, plastic parts: PBT, TPU; Ultrasonic transducer: PTFE film, FFKM O-ring	Stainless steel 1.4571, plastic parts: PBT, TPU; Ultrasonic transducer: PTFE film, FFKM O-ring	Stainless steel 1.4571, plastic parts: PBT, TPU; Ultrasonic transducer: PTFE film, FFKM O-ring	Stainless steel 1.4571, plastic parts: PBT, TPU; Ultrasonic transducer: PTFE film, FFKM O-ring	Stainless steel 1.4571, plastic parts: PBT, TPU; Ultrasonic transducer: PTFE film, FFKM O-ring
Process connection	IP 67	IP 67	IP 67	IP 67	IP 67
Norm conformity	EN 60947-5-2	EN 60947-5-2	EN 60947-5-2	EN 60947-5-2	EN 60947-5-2
Type of connection	5-pin initiator plug, PBT	5-pin initiator plug, PBT	5-pin initiator plug, PBT	5-pin initiator plug, PBT	5-pin initiator plug, PBT
Controls	2 push-buttons (TouchControl)	2 push-buttons (TouchControl)	2 push-buttons (TouchControl)	2 push-buttons (TouchControl)	2 push-buttons (TouchControl)
Indicators	3-digit LED-display, 2 three-colour LEDs with TouchControl and LinkControl	3-digit LED-display, 2 three-colour LEDs with TouchControl and LinkControl	3-digit LED-display, 2 three-colour LEDs with TouchControl and LinkControl	3-digit LED-display, 2 three-colour LEDs with TouchControl and LinkControl	3-digit LED-display, 2 three-colour LEDs with TouchControl and LinkControl
Programmable	with TouchControl and LinkControl	with TouchControl and LinkControl	with TouchControl and LinkControl	with TouchControl and LinkControl	with TouchControl and LinkControl
Operating temperature	-25 to +70 °C	-25 to +70 °C	-25 to +70 °C	-25 to +70 °C	-25 to +70 °C
Storage temperature	-40 to +85 °C	-40 to +85 °C	-40 to +85 °C	-40 to +85 °C	-40 to +85 °C
Weight	210 g	210 g	210 g	350 g	350 g
Switching hysteresis ¹⁾	3 mm	3 mm	3 mm	3 mm	3 mm
switching frequency ¹⁾	11 Hz	5 Hz	5 Hz	5 Hz	5 Hz
Response time ¹⁾	65 ms	84 ms	160 ms	240 ms	240 ms
Time delay before availability	<300 ms	<300 ms	<300 ms	<380 ms	<380 ms
Order No.	hps+25/DIU/TC/E/G1	hps+35/DIU/TC/E/G1	hps+130/DIU/TC/E/G1	hps+340/DIU/TC/E/G2	hps+340/DIU/TC/G2
Switching output	pnp, U _s = 2 V, I _{max} = 200 mA	pnp, U _s = 2 V, I _{max} = 200 mA	pnp, U _s = 2 V, I _{max} = 200 mA	pnp, U _s = 2 V, I _{max} = 200 mA	pnp, U _s = 2 V, I _{max} = 200 mA
switchable NOC/NC, short-circuit-proof	switchable NOC/NC, short-circuit-proof	switchable NOC/NC, short-circuit-proof	switchable NOC/NC, short-circuit-proof	switchable NOC/NC, short-circuit-proof	switchable NOC/NC, short-circuit-proof
Current output 4 to 20 mA	R _i ≤ 100 Ω at U _s ≤ 20 V; R _i ≤ 500 Ω at U _s ≥ 20 V	R _i ≤ 100 Ω at U _s ≤ 20 V; R _i ≤ 500 Ω at U _s ≥ 20 V	R _i ≤ 100 Ω at U _s ≤ 20 V; R _i ≤ 500 Ω at U _s ≥ 20 V	R _i ≤ 100 Ω at U _s ≤ 20 V; R _i ≤ 500 Ω at U _s ≥ 20 V	R _i ≤ 100 Ω at U _s ≤ 20 V; R _i ≤ 500 Ω at U _s ≥ 20 V
Rising/falling output characteristic	R _i ≤ 100 kΩ at U _s ≤ 15 V, short-circuit-proof	R _i ≤ 100 kΩ at U _s ≤ 15 V, short-circuit-proof	R _i ≤ 100 kΩ at U _s ≤ 15 V, short-circuit-proof	R _i ≤ 100 kΩ at U _s ≤ 15 V, short-circuit-proof	R _i ≤ 100 kΩ at U _s ≤ 15 V, short-circuit-proof
Voltage output 0 to 10 V	R _i ≤ 100 kΩ at U _s ≤ 15 V, short-circuit-proof	R _i ≤ 100 kΩ at U _s ≤ 15 V, short-circuit-proof	R _i ≤ 100 kΩ at U _s ≤ 15 V, short-circuit-proof	R _i ≤ 100 kΩ at U _s ≤ 15 V, short-circuit-proof	R _i ≤ 100 kΩ at U _s ≤ 15 V, short-circuit-proof
Rising/falling output characteristic	R _i ≤ 100 kΩ at U _s ≤ 15 V, short-circuit-proof	R _i ≤ 100 kΩ at U _s ≤ 15 V, short-circuit-proof	R _i ≤ 100 kΩ at U _s ≤ 15 V, short-circuit-proof	R _i ≤ 100 kΩ at U _s ≤ 15 V, short-circuit-proof	R _i ≤ 100 kΩ at U _s ≤ 15 V, short-circuit-proof

¹⁾ Can be programmed via TouchControl and LinkControl.

microsonic GmbH / Phoenixseestraße 7 / 44263 Dortmund / Germany / T +49 231 975151-0 / F +49 231 975151-51 / E info@microsonic.de / W microsonic.de

The content of this document is subject to technical changes. Specifications in this document are presented in a descriptive way only. They do not warrant any product features.



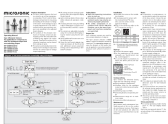
2014/30/EU



Contents

- [1 Documents / Resources](#)
- [2 Related Posts](#)

Documents / Resources

	microsonic hps Plus Series Ultrasonic Level Sensors [pdf] User Manual hps Plus Series Ultrasonic Level Sensors, hps Plus Series, Ultrasonic Level Sensors, Level Sensors, Sensors, hps Plus Series Ultrasonic Sensors, Ultrasonic Sensors
---	--