



Microsoft Xbox One Wireless Controller User Guide

[Home](#) » [Microsoft](#) » Microsoft Xbox One Wireless Controller User Guide 

Microsoft Xbox One Wireless Controller

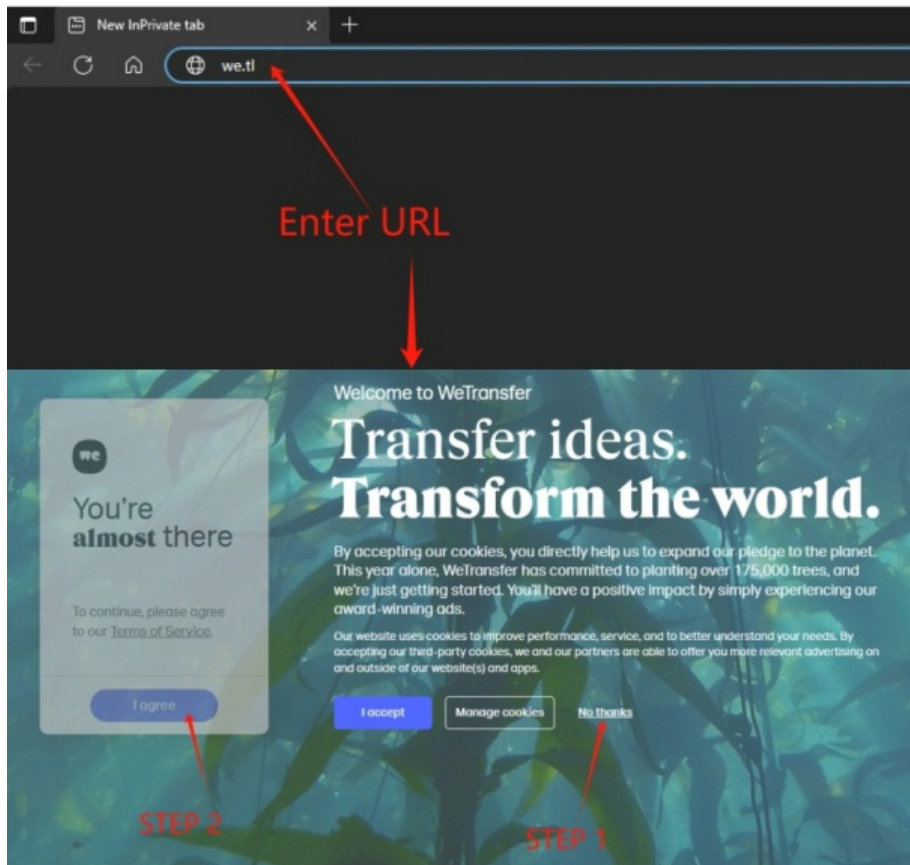


Contents

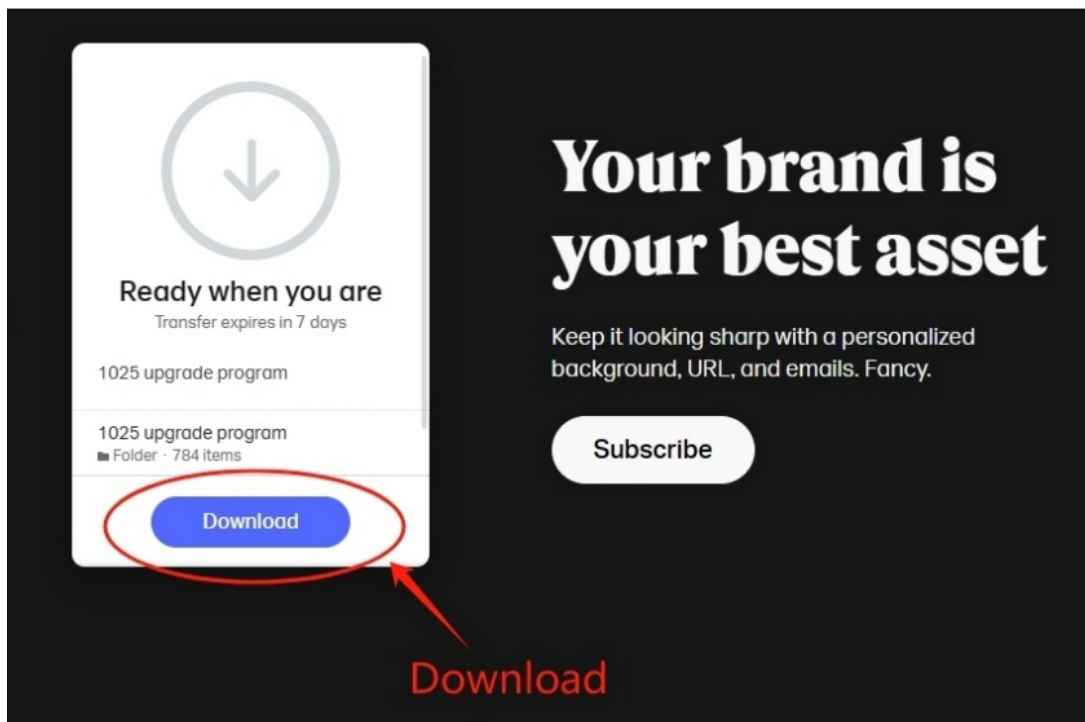
- [1 Instruction For Use](#)
- [2 Documents / Resources](#)
 - [2.1 References](#)
- [3 Related Posts](#)

Instruction For Use

URL: <https://we.tl/t-2yxSgg9Foc>



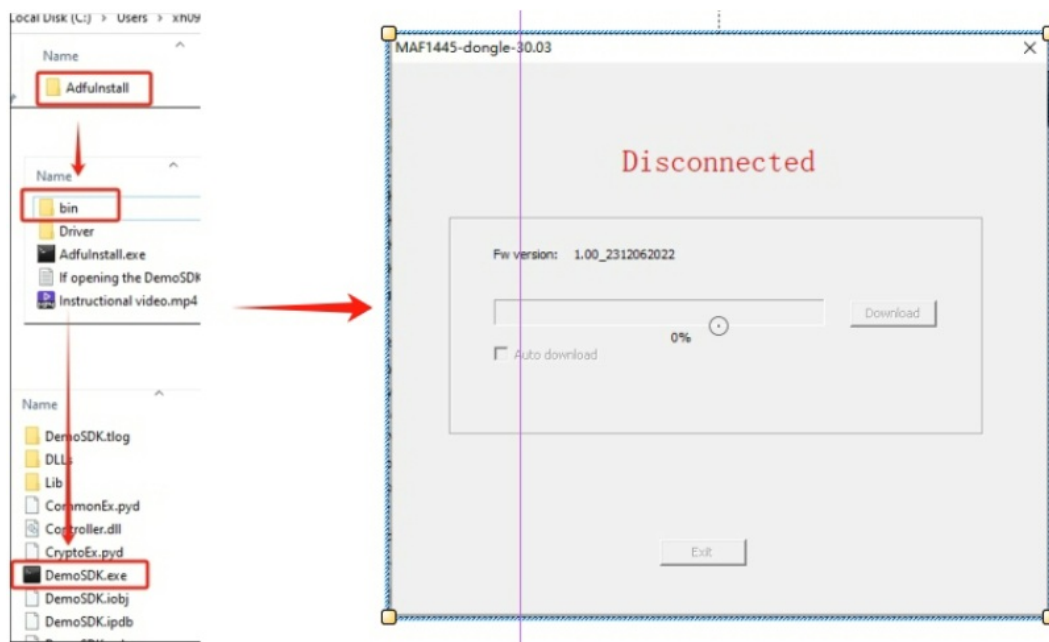
Download





Open the application: Demo SDK

File Path: Atafu Install → bin → DemoSDK.exe



Step 1: Connect the cable to the computer

Step 2: Press and hold the Y key

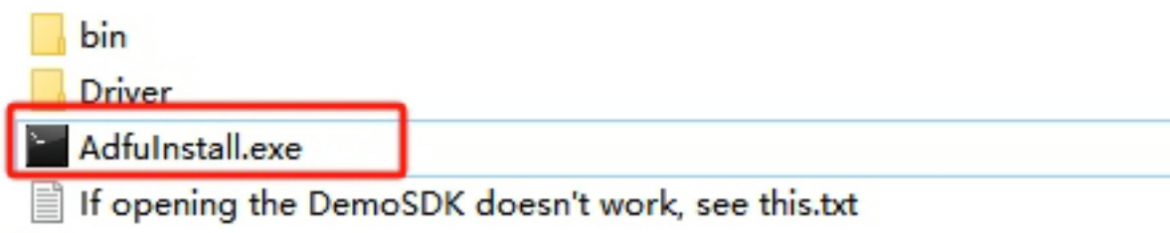
Step 3: Plug in the USB-C cable



The controller is successfully connected to the computer, click to download

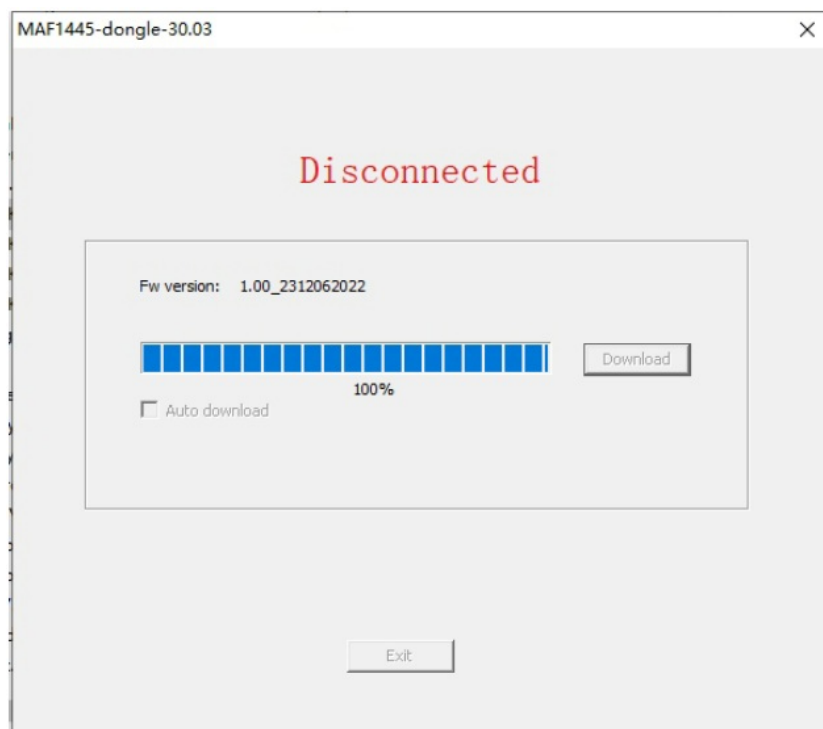


The program can not be recognized, first double-click "AdfulInstall.exe", and then upgrade!

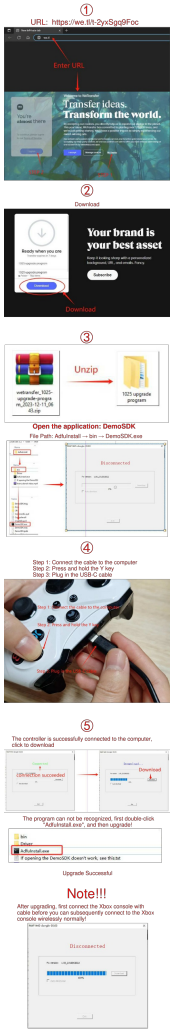


Upgrade Successful

Note: After upgrading, first connect the Xbox console with cable before you can subsequently connect to the Xbox console wirelessly normally!



Documents / Resources



[Microsoft Xbox One Wireless Controller \[pdf\] User Guide](#)
Xbox One Wireless Controller, Xbox One, Wireless Controller, Controller

References

- [User Manual](#)