

Microsemi SmartDesign MSS I/O Editor User Guide

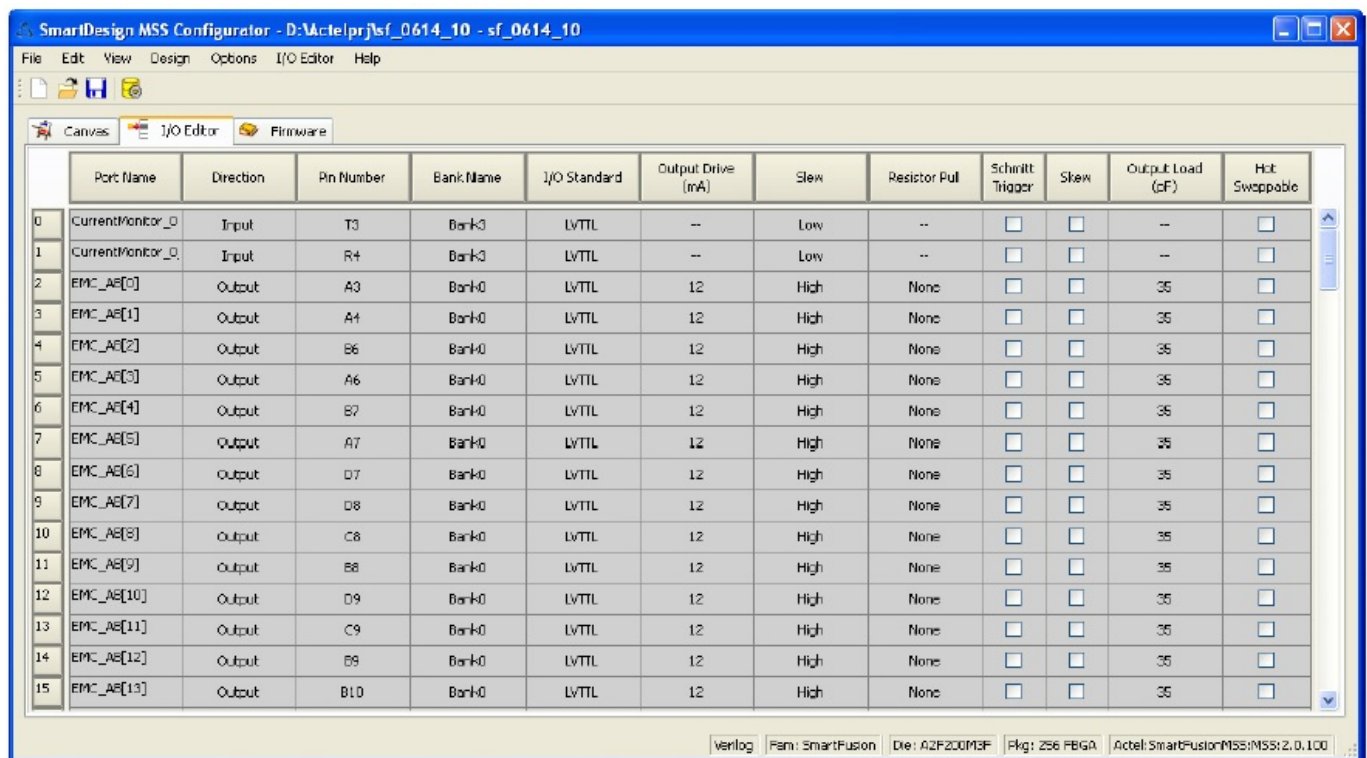
[Home](#) » [Microsemi](#) » Microsemi SmartDesign MSS I/O Editor User Guide 

Contents

- [1 Microsemi SmartDesign MSS I/O Editor](#)
- [2 Changing I/O Bank Settings](#)
- [3 A – Product Support](#)
- [4 Technical Support](#)
- [5 Corporate Headquarters](#)
- [6 Documents / Resources](#)
 - [6.1 References](#)
- [7 Related Posts](#)



Microsemi SmartDesign MSS I/O Editor



Changing I/O Bank Settings

The SmartDesign MSS Configurator is a specialized SmartDesign for MSS configuration. If you are familiar with SmartDesign then the MSS Configurator will be very familiar. The I/O Editor is a specialized I/O attribute editor for MSS I/O pins. Only the MSS I/O pins are editable in this table, regular FPGA I/Os are shown but do not contain any editable attributes (as shown in Figure 1).

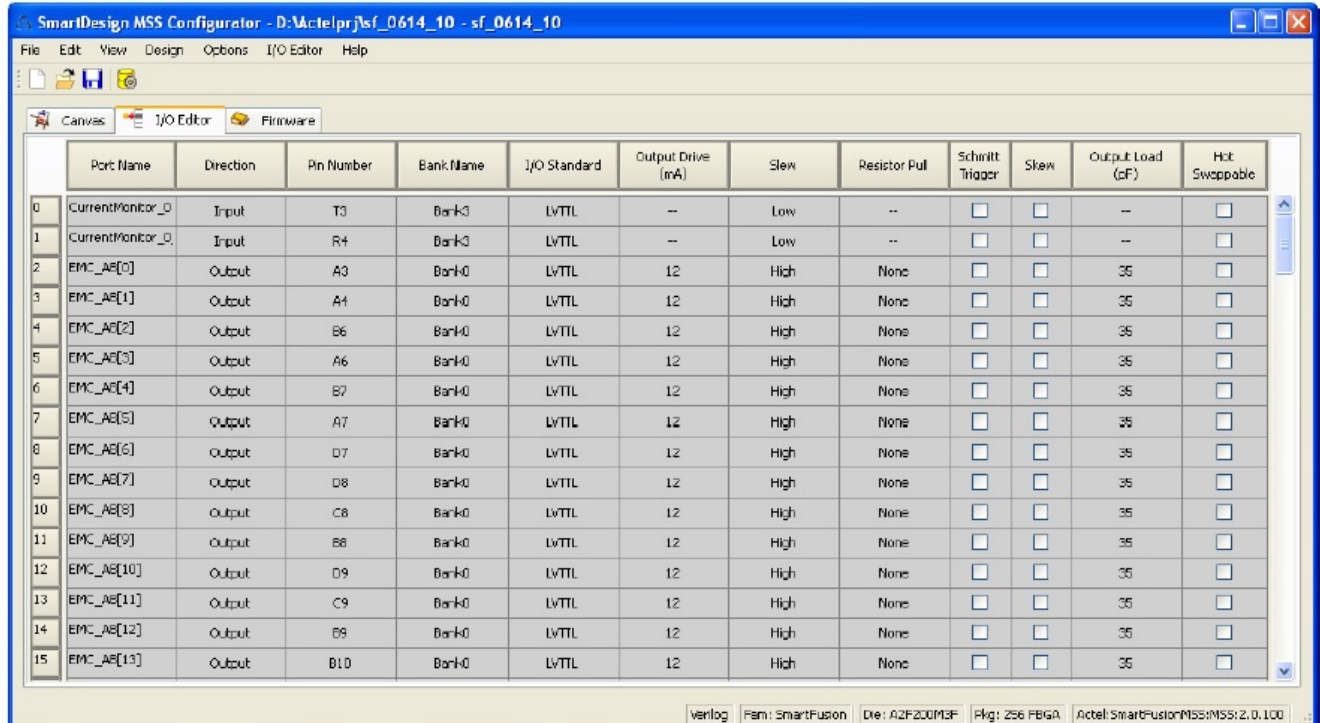
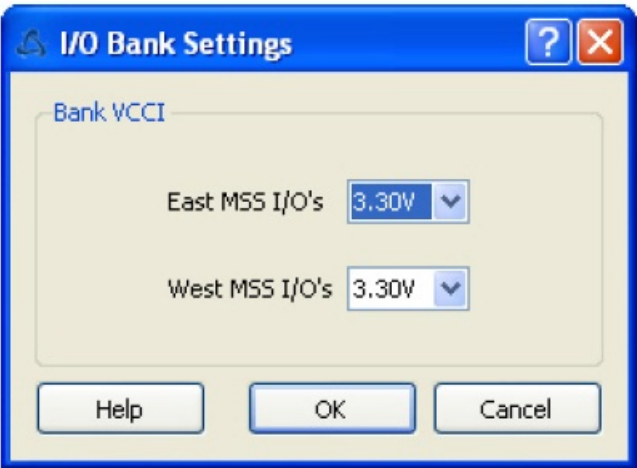


Figure 1 • MSS I/O View

- The I/O Editor only displays the attributes that are relevant for MSS I/Os. The read-only values are shown with a gray background. MSS I/Os must be configured inside the SmartDesign MSS Configurator. In Designer and SmartDesign I/O editor, all MSS I/O attributes are read-only.
- To access the I/O Bank settings in your MSS design you must click the I/O Editor tab in the MSS configurator,

and from the I/O Editor menu choose I/O Bank Settings. You can use the I/O Bank Settings dialog box to change the VCCI of the banks where the MSS I/Os are placed – the East (Bank 2) and West (Bank 4) MSS I/O banks (as shown in Figure 2).



These settings cannot be changed in Designer software. You have four options: 1.50V; 1.80V; 2.50V; 3.30V When changing the VCCI the MSS I/Os placed on this bank will change the I/O standard to match the new VCCI; this is done automatically. The I/O standard is changed as follows:

- **3.30V:** MSS I/Os placed on this bank are changed to LVTTTL. You may change the I/O standard to LVCMOS 3.3V for each MSS I/O individually using the I/O editor.
- **2.50V:** MSS I/Os placed on this bank are changed to LVCMOS 2.5V
- **1.80V:** MSS I/Os placed on this bank are changed to LVCMOS 1.8V
- **1.50V:** MSS I/Os placed on this bank are changed to LVCMOS 1.5V

I/O Editor Menu

Table 1 • I/O Editor Menu

Command	Icon	Shortcut	Function
I/O Bank Settings			Displays the I/O Bank Settings dialog box, in which you can assign technologies and VREF pins to your I/O banks (see above)

A – Product Support

The Microsemi SoC Products Group backs its products with various support services including a Customer Technical Support Center and Non-Technical Customer Service. This appendix contains information about contacting the SoC Products Group and using these support services.

Contacting the Customer Technical Support Center

Microsemi staffs its Customer Technical Support Center with highly skilled engineers who can help answer your hardware, software, and design questions. The Customer Technical Support Center spends a great deal of time creating application notes and answers to FAQs. So, before you contact us, please visit our online resources. It is very likely we have already answered your questions.

Technical Support

- Microsemi customers can receive technical support on Microsemi SoC products by calling Technical Support Hotline anytime Monday through Friday. Customers also have the option to interactively submit and track cases online at My Cases or submit questions through email anytime during the week.
- Web: www.actel.com/mycases
- Phone (North America): 1.800.262.1060
- Phone (International): +1 650.318.4460
- Email: soc_tech@microsemi.com

ITAR Technical Support

- Microsemi customers can receive ITAR technical support on Microsemi SoC products by calling ITAR Technical Support Hotline: Monday through Friday, from 9 AM to 6 PM Pacific Time. Customers also have the option to interactively submit and track cases online at My Cases or submit questions through email anytime during the week.
- Web: www.actel.com/mycases
- Phone (North America): 1.888.988.ITAR
- Phone (International): +1 650.318.4900
- Email: soc_tech_itar@microsemi.com

Non-Technical Customer Service

- Contact Customer Service for non-technical product support, such as product pricing, product upgrades, update information, order status, and authorization.
- Microsemi's customer service representatives are available Monday through Friday, from 8 AM to 5 PM Pacific Time, to answer non-technical questions.
- Phone: +1 650.318.2470

Microsemi Corporation (NASDAQ: MSCC) offers the industry's most comprehensive portfolio of semiconductor technology. Committed to solving the most critical system challenges, Microsemi's products include high-performance, high-reliability analog and RF devices, mixed signal integrated circuits, FPGAs and customizable SoCs, and complete subsystems. Microsemi serves leading system manufacturers around the world in the defense, security, aerospace, enterprise, commercial, and industrial markets. Learn more at www.microsemi.com.

Corporate Headquarters

- Microsemi Corporation
- 2381 Morse Avenue
- Irvine, CA
- 92614-6233
- USA
- Phone 949-221-7100
- Fax 949-756-0308

SoC Products Group

- 2061 Stierlin Court
- Mountain View, CA
- 94043-4655
- USA
- Phone 650.318.4200
- Fax 650.318.4600 www.actel.com

SoC Products Group (Europe)

- River Court, Meadows Business Park
- Station Approach, Blackwtery
- Camberley Surrey GU17 9AB
- United Kingdom
- Phone +44 (0) 1276 609 300
- Fax +44 (0) 1276 607 540

SoC Products Group (Japan)

- EXOS Ebisu Building 4F
- 1-24-14 Ebisu Shibuya-ku
- Tokyo 150 Japan
- Phone +81.03.3445.7671
- Fax +81.03.3445.7668

SoC Products Group (Hong Kong)



- Room 2107, China Resources Building
- 26 Harbour Road
- Wanchai, Hong Kong
- Phone +852 2185 6460
- Fax +852 2185 6488

© 2010 Microsemi Corporation. All rights reserved. Microsemi and the Microsemi logo are trademarks of Microsemi Corporation. All other trademarks and service marks are the property of their respective owners.

Documents / Resources

 	<p>Microsemi SmartDesign MSS I/O Editor [pdf] User Guide SmartDesign MSS I O Editor, SmartDesign, MSS I O Editor</p>
--	--

References

-  [FPGAs and PLDs | Microchip Technology](#)
-  [FPGAs and PLDs | Microchip Technology](#)
-  [Microsemi | Semiconductor & System Solutions | Power Matters](#)

Manuals+.