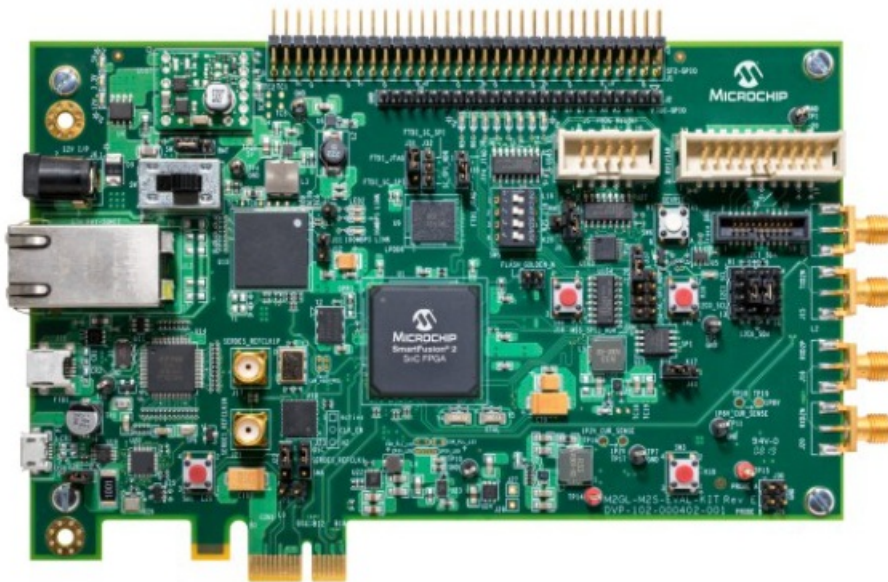


# Microsemi DG0637 SmartFusion2 SoC FPGA CoreTSE\_AHB User Guide

[Home](#) » [Microsemi](#) » Microsemi DG0637 SmartFusion2 SoC FPGA CoreTSE\_AHB User Guide 



## DG0637 SmartFusion2 SoC FPGA CoreTSE\_AHB User Guide



DG0637  
Demo Guide  
SmartFusion2 SoC FPGA CoreTSE\_AHB 1000 Base-T  
Loopback – Libero SoC v11.8

## Contents

- [1 DG0637 SmartFusion2 SoC FPGA CoreTSE\\_AHB](#)
- [2 Revision History](#)
- [3 SmartFusion2 SoC FPGA CoreTSE\\_AHB 1000 Base-T Loopback Demo](#)
- [4 Appendix: Running the Demo Design Using Spirent Test Center](#)
- [5 Documents / Resources](#)
  - [5.1 References](#)
- [6 Related Posts](#)

## DG0637 SmartFusion2 SoC FPGA CoreTSE\_AHB

Microsemi makes no warranty, representation, or guarantee regarding the information contained herein or the suitability of its products and services for any particular purpose, nor does Microsemi assume any liability whatsoever arising out of the application or use of any product or circuit. The products sold hereunder and any other products sold by Microsemi have been subject to limited testing and should not be used in conjunction with mission-critical equipment or applications. Any performance specifications are believed to be reliable but are not verified, and Buyer must conduct and complete all performance and other testing of the products, alone and together with, or installed in, any end-products. Buyer shall not rely on any data and performance specifications or parameters provided by Microsemi. It is the Buyer's responsibility to independently determine suitability of any products and to test and verify the same. The information provided by Microsemi hereunder is provided "as is, where is" and with all faults, and the entire risk associated with such information is entirely with the Buyer. Microsemi does not grant, explicitly or implicitly, to any party any patent rights, licenses, or any other IP rights, whether with regard to such information itself or anything described by such information. Information provided in this document is proprietary to Microsemi, and Microsemi reserves the right to make any changes to the information in this document or to any products and services at any time without notice.

### About Microsemi

Microsemi Corporation (Nasdaq: MSCC) offers a comprehensive portfolio of semiconductor and system solutions for aerospace & defense, communications, data center and industrial markets. Products include high-performance and radiation-hardened analog mixed-signal integrated circuits, FPGAs, SoCs and ASICs; power management products; timing and synchronization devices and precise time solutions, setting the world's standard for time; voice processing devices; RF solutions; discrete components; enterprise storage and communication solutions, security technologies and scalable anti-tamper products; Ethernet solutions; Power-over-Ethernet ICs and midspans; as well as custom design capabilities and services. Microsemi is headquartered in Aliso Viejo, California, and has approximately 4,800 employees globally. Learn more at [www.microsemi.com](http://www.microsemi.com).

## Revision History

The revision history describes the changes that were implemented in the document. The changes are listed by revision, starting with the most current publication.

### 1.1 Revision 3.0

The following is a summary of the changes in revision 2.0 of this document.

- Libero SoC version was updated in the software requirements and in the demo design details. For more information, see Design Requirements, page 2, and Demo Design, page 3, respectively.

### 1.2 Revision 2.0

The following is a summary of the changes in revision 2.0 of this document.

- Libero SoC, Flash Pro, and Soft Console design requirements were updated. For more information, see Design Requirements, page 2.
- Throughout the document, the names of Soft Console projects used in the demo design and all the associated

figures were updated.

### 1.3 Revision 1.0

Revision 1.0 was the first publication of this document.

## SmartFusion2 SoC FPGA CoreTSE\_AHB 1000 Base-T Loopback Demo

Microsemi Triple-Speed Ethernet MAC, CoreTSE\_AHB is a configurable soft intellectual property (IP) core that complies with the IEEE 802.3 standard.

This demo design provides an Ethernet solution for the Smart Fusion ® 2 SoC FPGA and implements a CoreTSE\_AHB-based 1000 Base-T loopback design on the SmartFusion2 Security Evaluation Kit. CoreTSE\_AHB enables system designers to implement a broad range of Ethernet designs, from low-cost 10/100 Ethernet to higher-performance 1 gigabit ports. CoreTSE\_AHB suits networking equipment's such as switches, routers, and data acquisition systems. Cortes is also available in a version that works with IGLOO ® 2 FPGA family.

CoreTSE\_AHB has the following interfaces:

- 10/100/1000 Mbps Ethernet MAC with a gigabit media independent interface (GMII) and ten bit interface (TBI) to support serial gigabit media independent interface (SGMII), 1000BASE-T, and 1000BASE-X
- GMII or TBI physical layer interface connects to Ethernet PHY
- MAC data path interface
- Advanced peripheral bus (APB) slave interface for MAC configuration registers and status counter access

CoreTSE\_AHB can be configured as GMII or TBI for Ethernet network at 10/100/1000 Mbps data transfer rates (line speeds).

The Core TSE IP is available in two different versions:

- CoreTSE\_AHB: Uses AHB interface for both the transmit and receive paths. This IP works for SmartFusion2 SoC FPGA.
- Core TSE (Non-AMBA): Uses direct access to the MAC with a streaming packet interface. This IP works for IGLOO2 FPGA and SmartFusion2 SoC FPGA.

Core TSE and CoreTSE\_AHB are identical to MSS hard Ethernet MAC in SmartFusion2 with respect to the supported features, register configuration, and register addresses. Multiple instances of the Core TSE IP can be used to achieve Ethernet solutions in SmartFusion2 devices. The CoreTSE\_AHB IP, along with MSS Ethernet MAC, can be used to support multiple Ethernet interfaces for SmartFusion2 devices. For more information about CoreTSE\_AHB, see to the CoreTSE\_AHB Handbook.

For more information about Ethernet applications, see the AC423: SmartFusion2/IGLOO2 Ethernet Application Note.

**Note:** CoreTSE\_AHB requires a license for use in the Libero® SoC design suite. For license request, send an email to [soc\\_marketing@microsemi.com](mailto:soc_marketing@microsemi.com).

### 2.1 Design Requirements

The following table lists the design requirements for running the demo.

#### Table 1 • Design Requirements

Hardware Requirements	Description
SmartFusion2 Security Evaluation Kit: • 12 V adapter • FlashPro4 programmer	Rev D or later
Host PC or Laptop (12 GB RAM)	Windows 64-bit Operating System
Spirent Test Center (Optional)	

Software Requirements	
Libero SoC	11.8
FlashPro Programming Software	11.8
SoftConsole	v4.0
Cat Karat Packet Generator Software Wireshark Software	Provided with design files
Wireshark Software	Provided with design files
IP Requirements	
CoreTSE_AHB	License provided on request. Send an email to <a href="mailto:soc_marketing@microsemi.com">soc_marketing@microsemi.com</a> .

## 2.2 Demo Design

The demo design files are available for download at: [http://soc.microsemi.com/download/rsc/?f=m2s\\_dg0637\\_liberov11p8\\_df](http://soc.microsemi.com/download/rsc/?f=m2s_dg0637_liberov11p8_df)

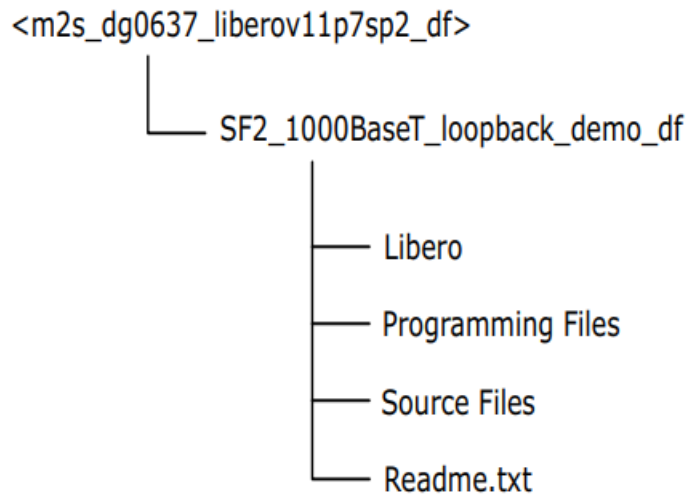
The demo design files include:

- Libero project
- Programming files
- Source files
- Readme.txt file

See the Readme.txt file for the complete directory structure.

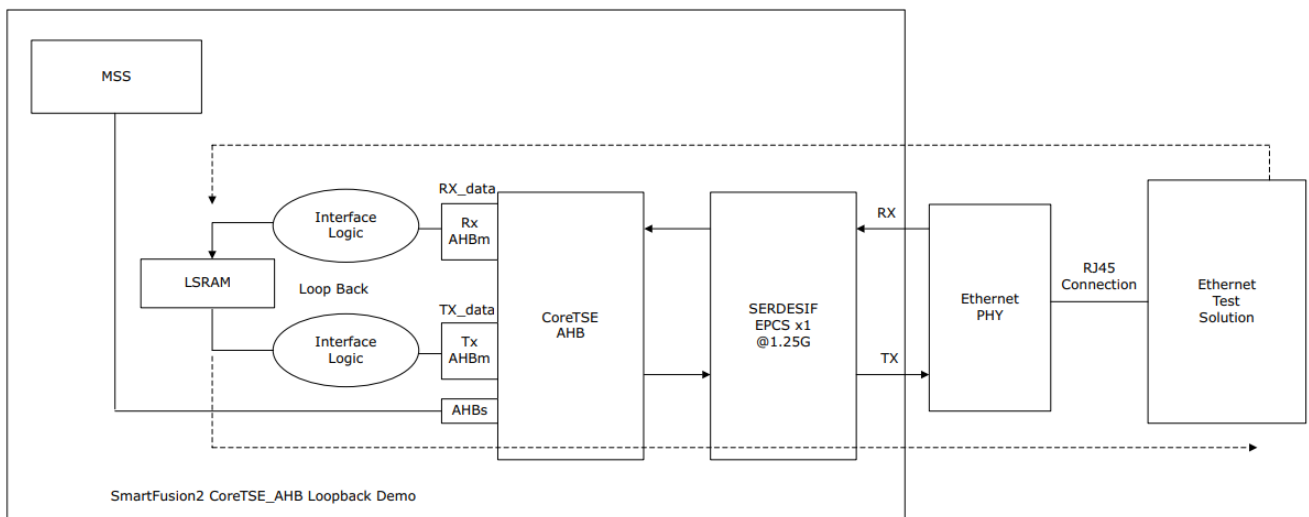
The following figure shows the top-level structure of the design files.

**Figure 1 • Demo Design Files Top-Level Structure**



The following figure shows the demo design block diagram.

**Figure 2 • SmartFusion2 CoreTSE\_AHB 1000 Base-T Loop back Demo Block Diagram**



In this demo design, CoreTSE\_AHB is instantiated in the FPGA fabric and connected to the on-board Ethernet PHY using high-speed serial interface (SERDES\_IF).

In the previous figure, the dotted arrow in red shows the transfer of Ethernet packet from the host PC to the internal LSRAM and the dotted arrow in blue shows the retransmission of packet from LSRAM to the host.

### 2.2.1 Design Features

The demo design performs Ethernet loopback using CoreTSE\_AHB in TBI 1000 Base-T on hardware and also in simulation.

Following are the demo design features:

- Simulation model for CoreTSE\_AHB loopback design.
- CoreTSE\_AHB loopback design on SmartFusion2 Security Evaluation Kit.

The following section explains the initialization and configuration of CoreTSE\_AHB, SERDES\_IF, and the loopback mechanism.

#### 2.2.1.1 High-Speed Serial Interface Configuration

During the design process, CoreTSE\_AHB was configured to present a Ten Bit Interface (TBI) to the SERDESIF block, which is configured for External Physical Coding Sub Layer (EPCS) operation using lane 3 to create an SGMII link to the external physical-layer (PHY) device.

#### 2.2.1.2 CoreTSE\_AHB IP MAC Initialization

At power-up, firmware running on the Cortex-M3 processor will initialize control registers in CoreTSE\_AHB and the external PHY device to place them in 1000 Base-T mode.

#### 2.2.1.3 Ethernet Packet Loopback Mechanism

The following Ethernet loopback mechanism is used in this demo:

##### 2.2.1.3.1 Ethernet Packet Reception

CoreTSE\_AHB receives the Ethernet packet from the on-board Ethernet PHY through high-speed SERDES\_IF. CoreTSE\_AHB receive (RX) path is connected to LSRAM through the AHB interface. The Cortex- M3 processor moves the Ethernet packet data to the LSRAM memory using DMA.

#### 2.2.1.3.2 Ethernet Packet Transmission

To loop back the Ethernet packet, the Cortex-M3processor reads the Ethernet packet data from LSRAM memory through AHB interface and forwards it to it on the CoreTSE\_AHB transmit (TX) path.

CoreTSE\_AHB transmits the Ethernet packet to the on-board Ethernet PHY through high-speed SERDES.

#### 2.2.1.4 Ethernet Test Solution

There are many ways to evaluate the CoreTSE\_AHB 1000 Base-T loopback demo on the SmartFusion2 Security Evaluation board.

##### 2.2.1.4.1 Solution 1

- The Cat Karat packet generator software installed on the host PC is used to transmit the Ethernet packet through RJ45 Ethernet copper cable.
- The Wireshark packet receiver software installed on the host PC captures the Ethernet packet (loopback) through RJ45 Ethernet copper cable.

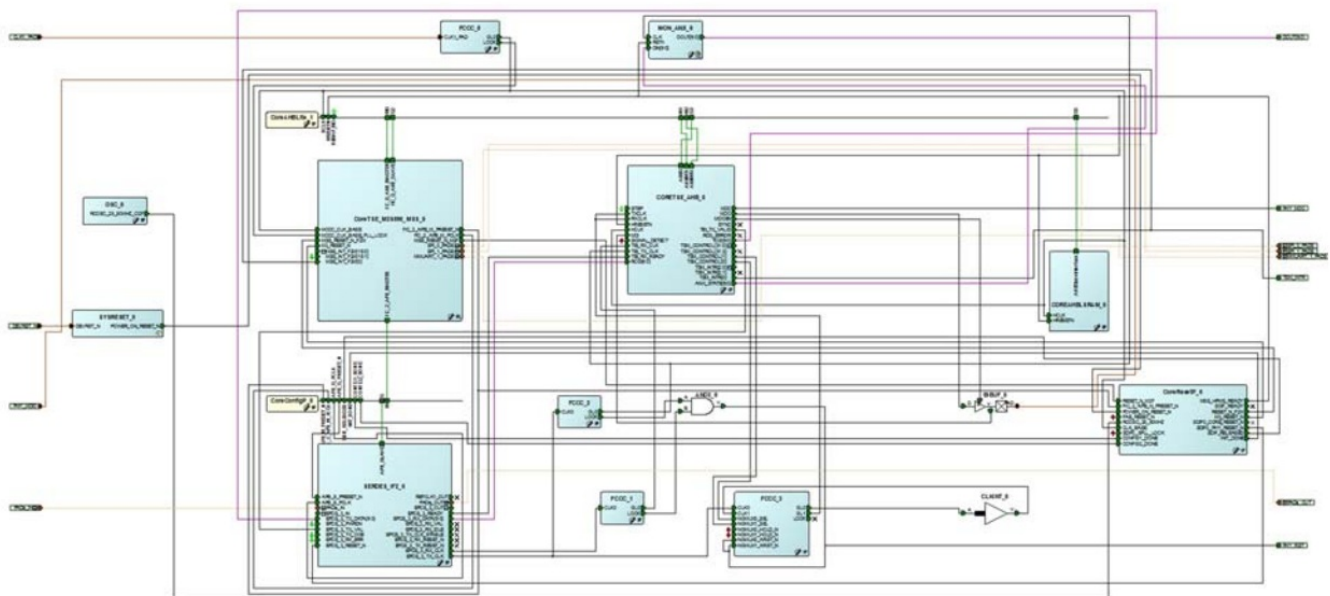
##### 2.2.1.4.2 Solution 2

Spirent test center or an equivalent solution can be used to test the CoreTSE\_AHB loopback demo. For more information, see Appendix: Running the Demo Design Using Spirent Test Center, page 14.

#### 2.2.2 Design Description

This demo design is implemented by configuring the CoreTSE\_AHB for the TBI mode. The following figure shows the Libero SoC hardware implementation for this demo design.

**Figure 3 • Libero SmartDesign**



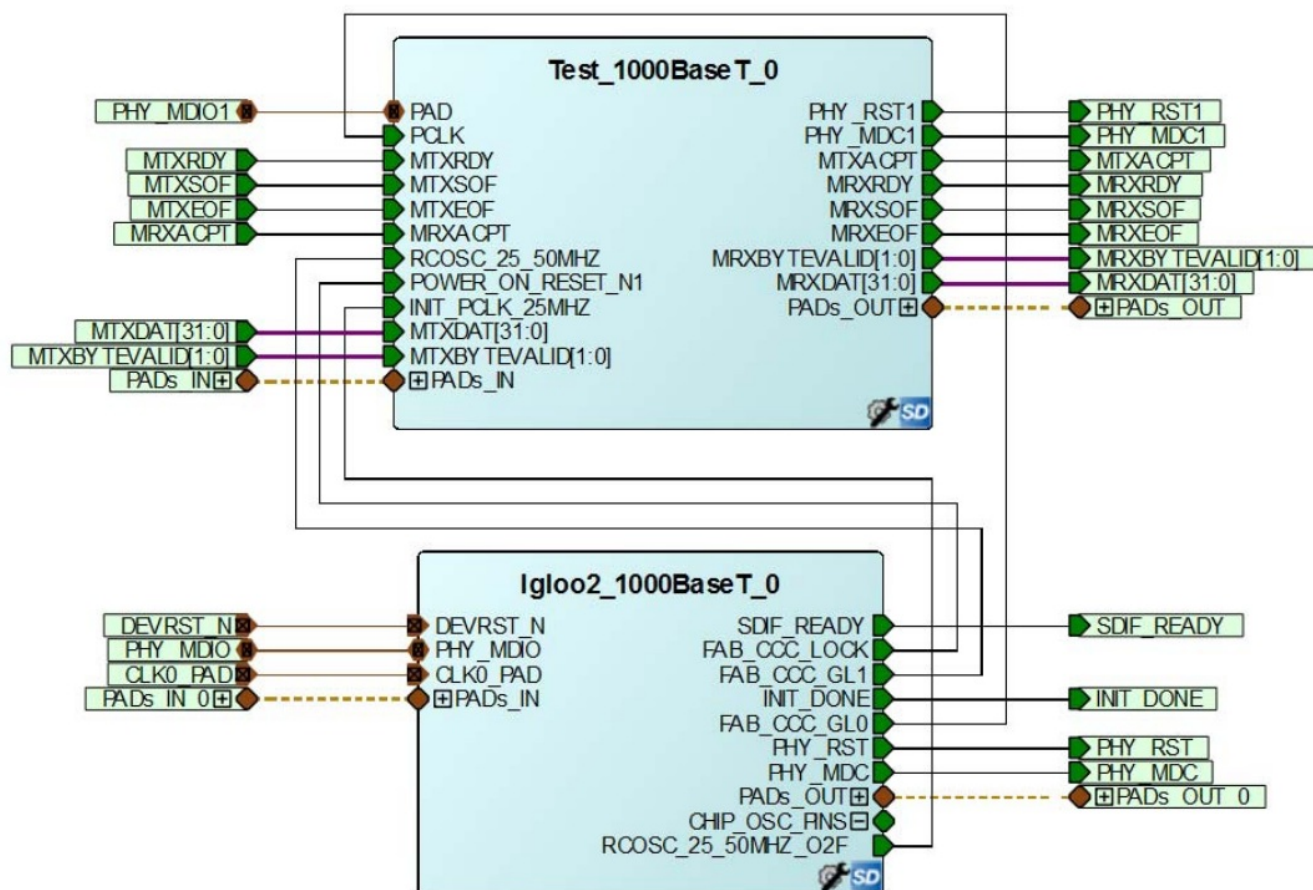
Libero hardware project uses the following resources:

- CoreTSE\_AHB
- Cortex M3 (microcontroller sub system) to configure CoreTSE\_AHB and on-board Ethernet PHY
- High-speed serial interface (SERDES\_IF) configured for EPCS lane 3 mode
- Soft Console – application for initializing the CoreTSE\_AHB and for transferring the Ethernet packet data to/from LSRAM
- Dedicated input pad 0 as the clock source



The Libero Smart Design top-level module contains the CoreTSE\_AHB loopback design and the test bench module.

**Figure 5 • Libero SmartDesign Top-Level Module**



## 2.4 Setting Up the Demo Design

The following steps describe how to setup the demo.

1. Connect the **FlashPro4 Programmer** to the J5 connector on the SmartFusion2 FPGA Security Evaluation Board.
2. Connect the jumpers to the SmartFusion2 FPGA Security Evaluation Board as specified in the following table.

**Table 2 • SmartFusion2 Security FPGA Evaluation Kit Jumper Settings**

Jumper	Pin (from)	Pin (to)	Comments
J22	1	2	Default
J23	1	2	Default
J24	1	2	Default
J8	1	2	Default
J3	1	2	Default

3. Connect the power supply to the J6 connector.

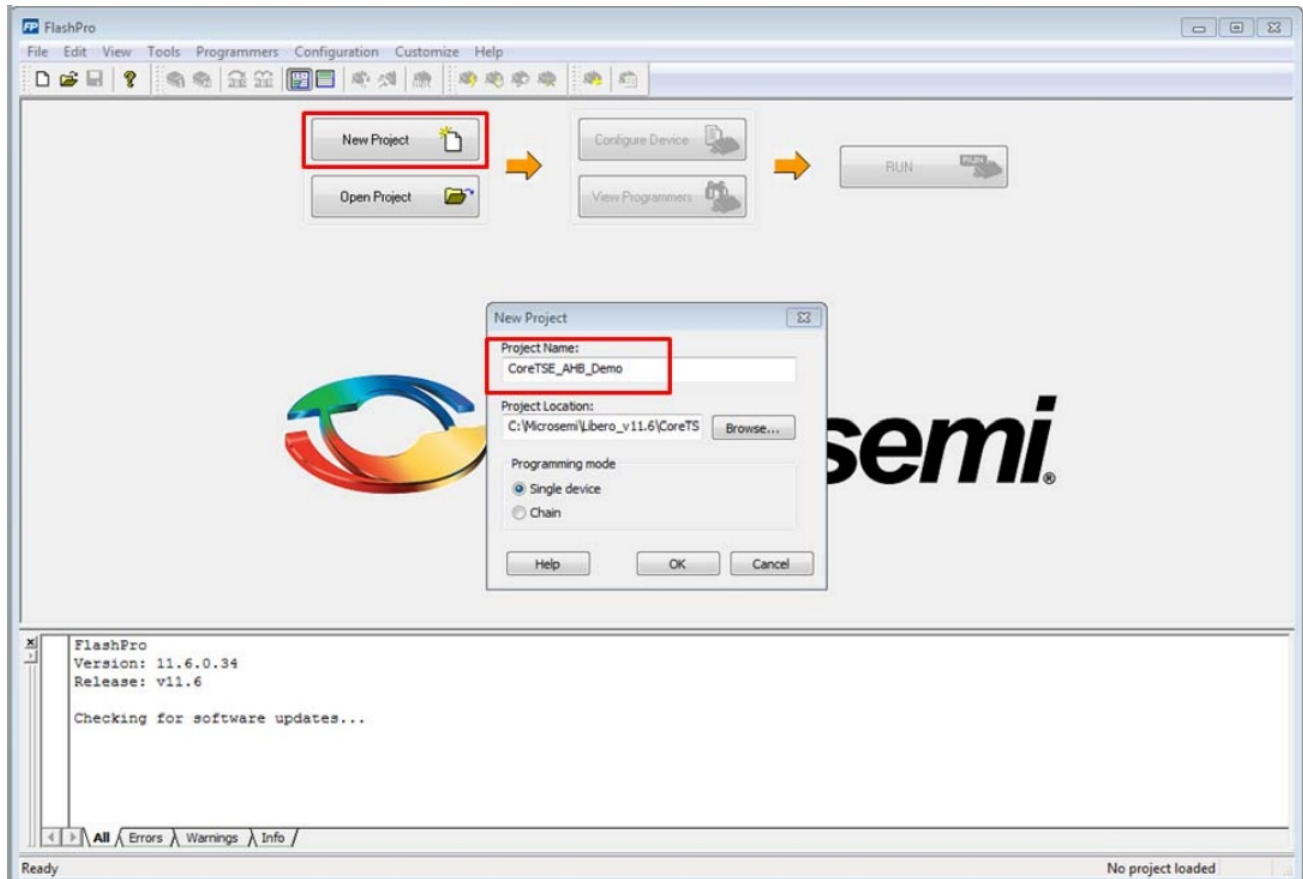
### 2.4.1 Programming the Design

The following steps describe how to program the demo design.



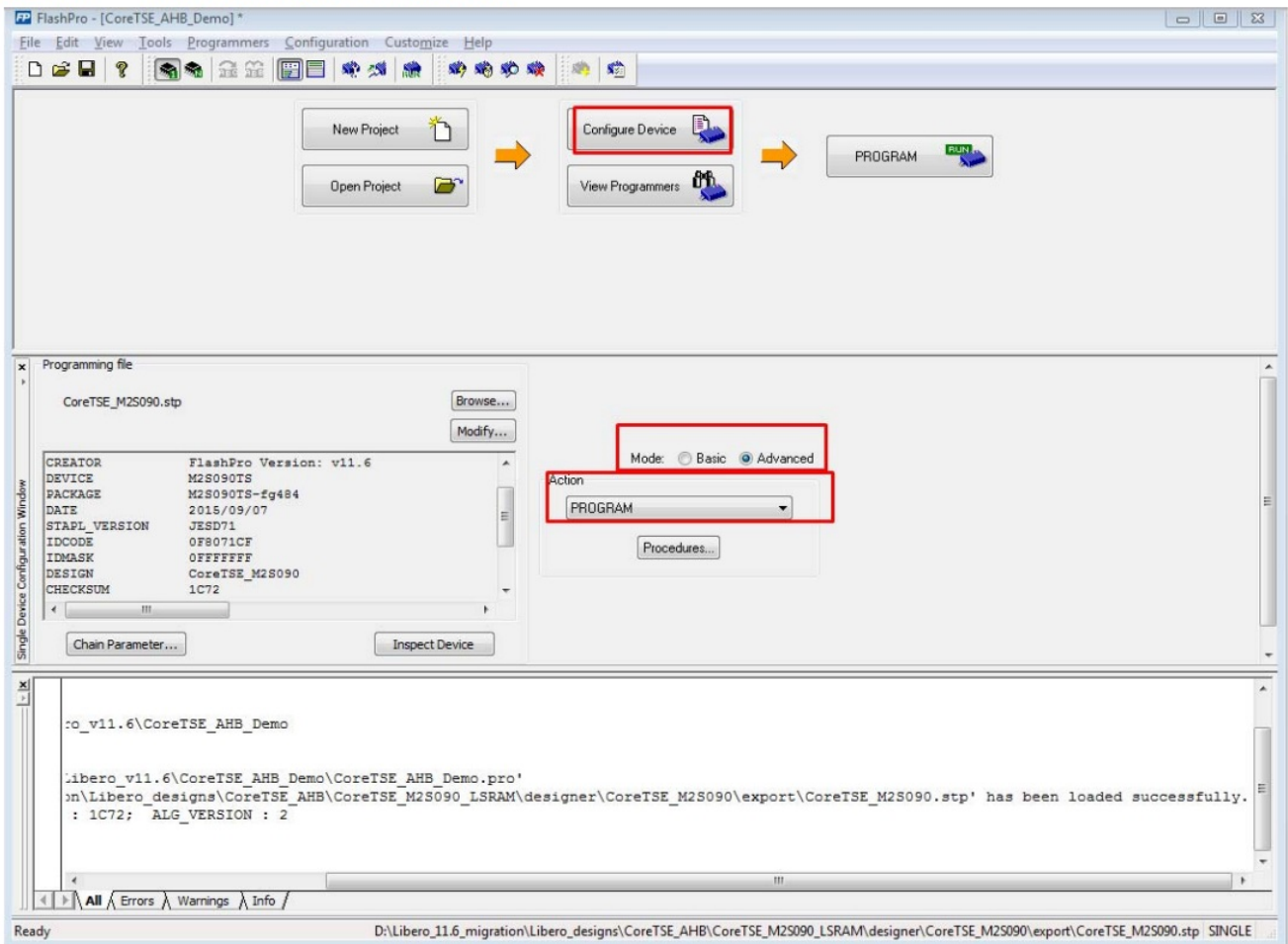
1. Download the demo design from the following path: [http://soc.microsemi.com/download/rsc/?f=m2s\\_dg0637\\_liberov11p7sp2\\_df](http://soc.microsemi.com/download/rsc/?f=m2s_dg0637_liberov11p7sp2_df)
2. Switch ON the power supply switch, **SW7**.
3. Launch the **Flash Pro** software.
4. Click **New Project**.
5. In the **New Project** window, enter the project name as **CoreTSE\_AHB\_Demo**.
6. Click **Browse**, and navigate to the location to save the project.
7. Select **Single Device** as the programming mode.
8. Click **OK** to save the project.

**Figure 6 • FlashPro New Project Creation**



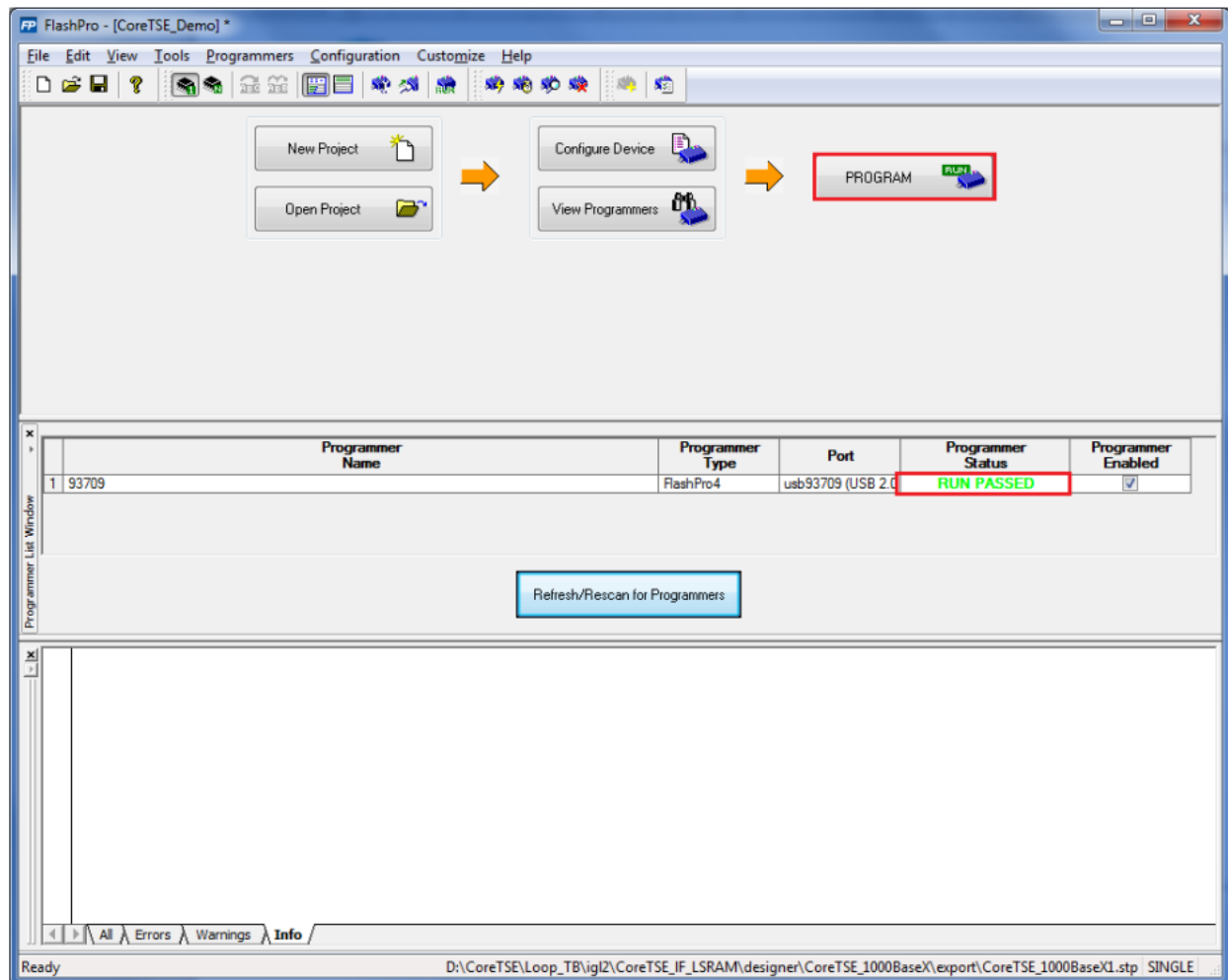
9. Click **Configure Device**.

**Figure 7 • FlashPro Project Configuration**



10. Click Browse, navigate to the location where the SF2\_1000BaseT\_Demo.stp file is located, and select the file. The default location is:  
<download\_folder>\SF2\_1000BaseT\_loopback\_demo\_df\ProgrammingFile\
11. Select **Advanced** as the **Mode**, and select **PROGRAM** under **Action**.
12. Click **PROGRAM** to start programming the device. Wait until the programmer status is changed to **RUN PASSED**.

**Figure 8 • FlashPro Programming Passed**



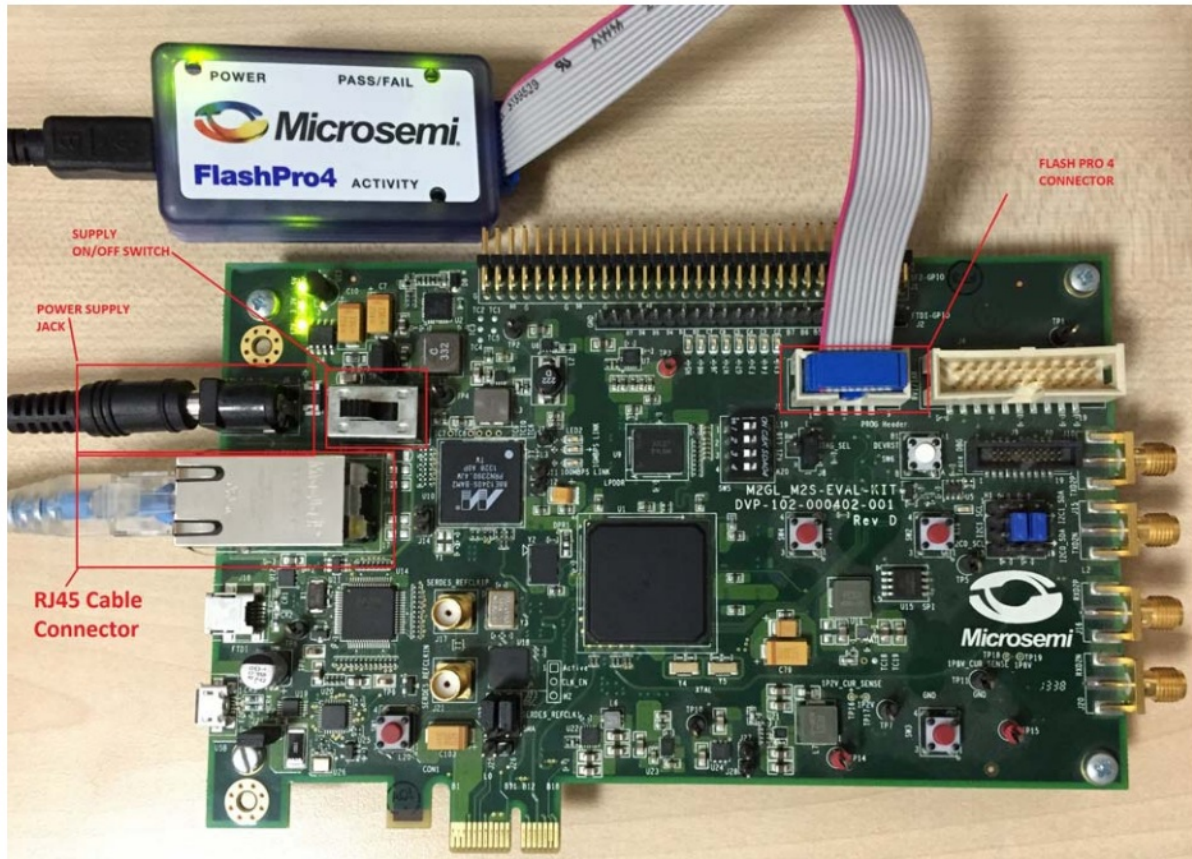
#### 2.4.2 Connecting SmartFusion2 Security Evaluation Board to Host PC

The following steps describe how to connect the SmartFusion2 Security Evaluation Board to the host PC:

1. After successful programming, switch OFF the SmartFusion2 Security Evaluation Board.
2. Connect the host PC to the J13 connector on the SmartFusion2 Security Evaluation Kit using the RJ45 cable.

The following figure shows the SmartFusion2 Security Evaluation Kit board setup.

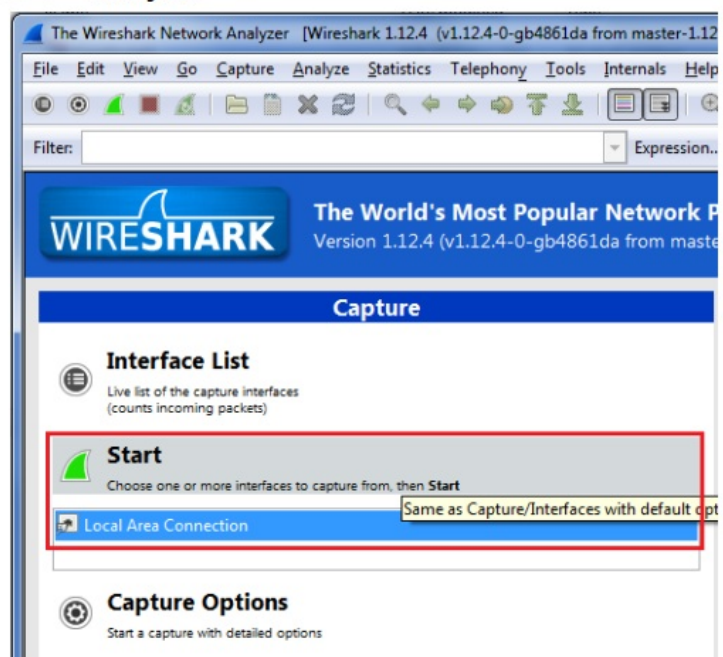
**Figure 9 • SmartFusion2 Security Evaluation Kit Setup**



### 2.4.3 Running the Demo Design with Cat Karat and Wireshark on the Hardware

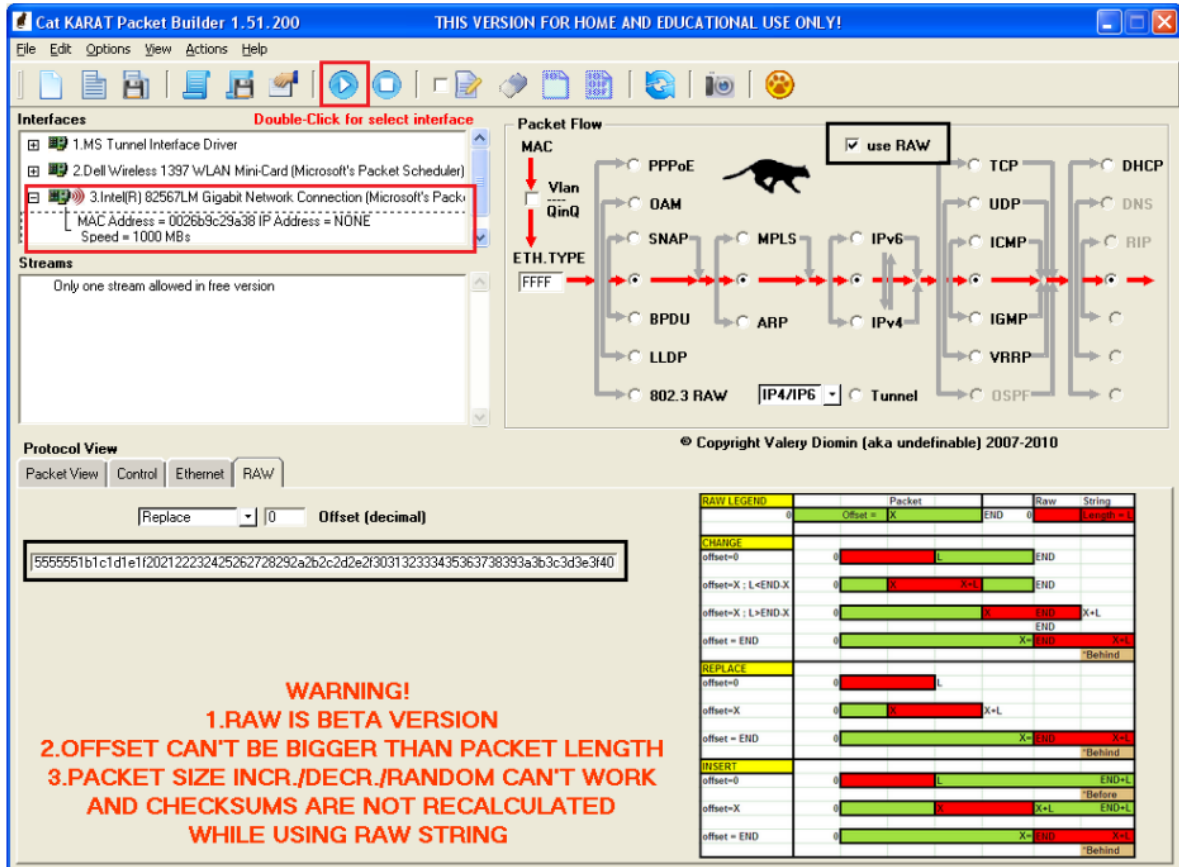
1. Switch ON the power supply switch, SW7.
2. Install the Cat Karat packet software and Wireshark software on the host PC from the source files. (<download folder>\ SF2\_1000BaseT\_loopback\_demo\_df \Source Files\)
3. On the host PC, open the Wireshark network analyzer. Select Start as shown in Figure 10, page 12.

**Figure 10 • Wireshark Network Analyzer**



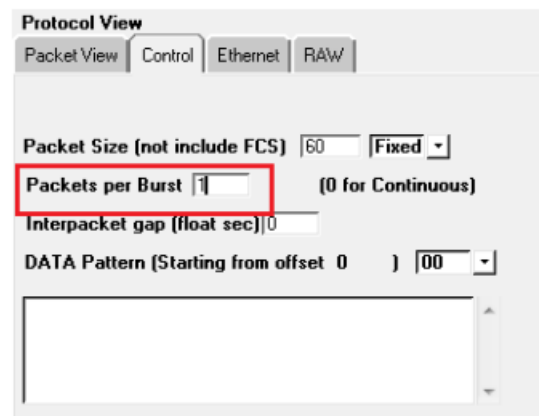
4. On the host PC, open the Cat Karat software, as shown in the following figure.

**Figure 11 • Cat Karat Packet Generate Window**



- Under Protocol View, select the Control tab and enter the value 1 for Packets per Burst, as shown in the following figure.

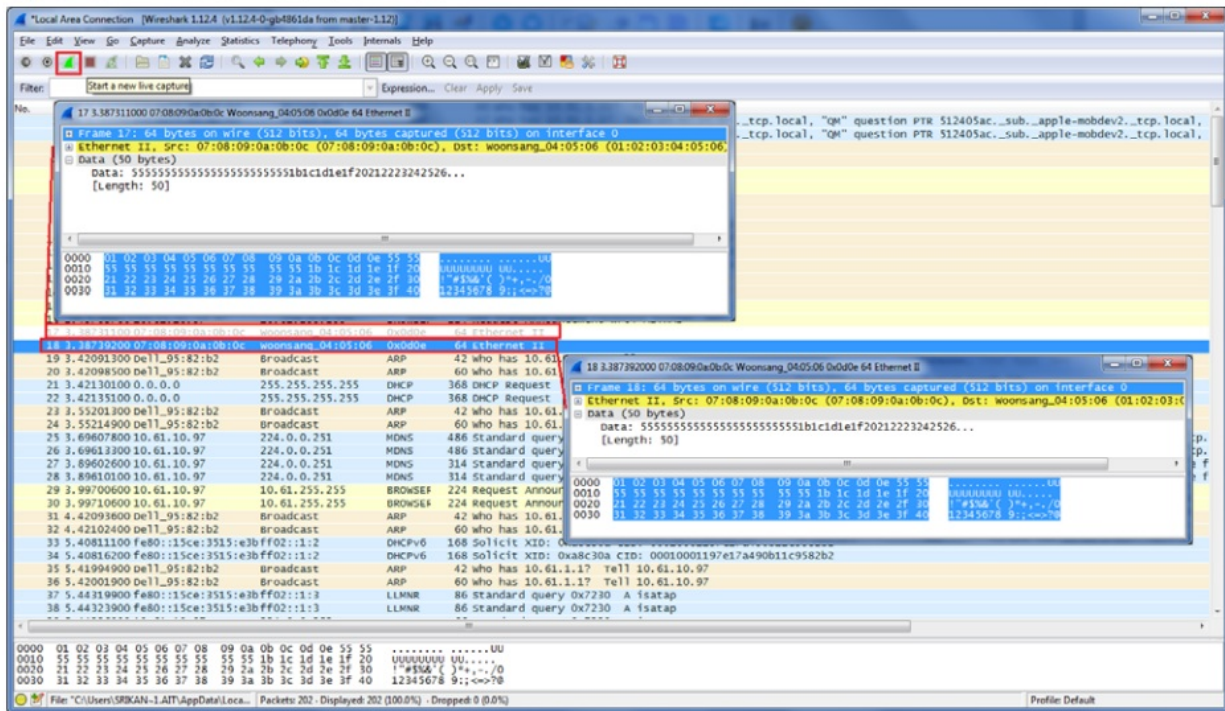
**Figure 12 • Packet Flow Control**



- Under Packet Flow, select use RAW, as shown in Figure 11, page 12.
- Under Protocol View, select the RAW tab and copy the Ethernet net packet from the source files (<download folder>\SF2\_1000BaseT\_loopback\_demo\_df\Source Files\Raw\_packet.txt), as shown in Figure 11, page 12.
- Under Interfaces, select the Ethernet connection to the SmartFusion2 Evaluation board.
- Select Start Transmit from the menu, as shown in Figure 11, page 12, to transmit the packet.
- In the Wireshark software window, double-click Ethernet-II, as shown in the following figure. The transmitted and received Ethernet packets are displayed.



**Figure 13 • Wireshark Software Window**

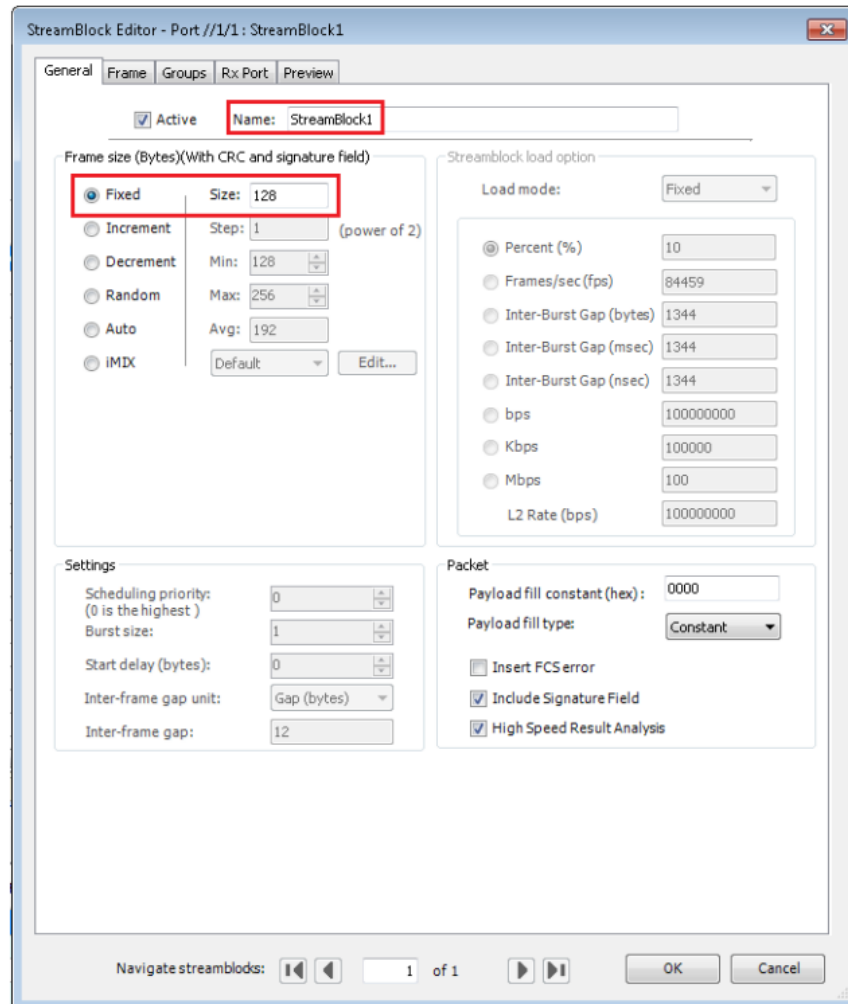


## Appendix: Running the Demo Design Using Spirent Test Center

The following steps describe how to run the CoreTSE\_AHB loopback demo using Spirent test center:

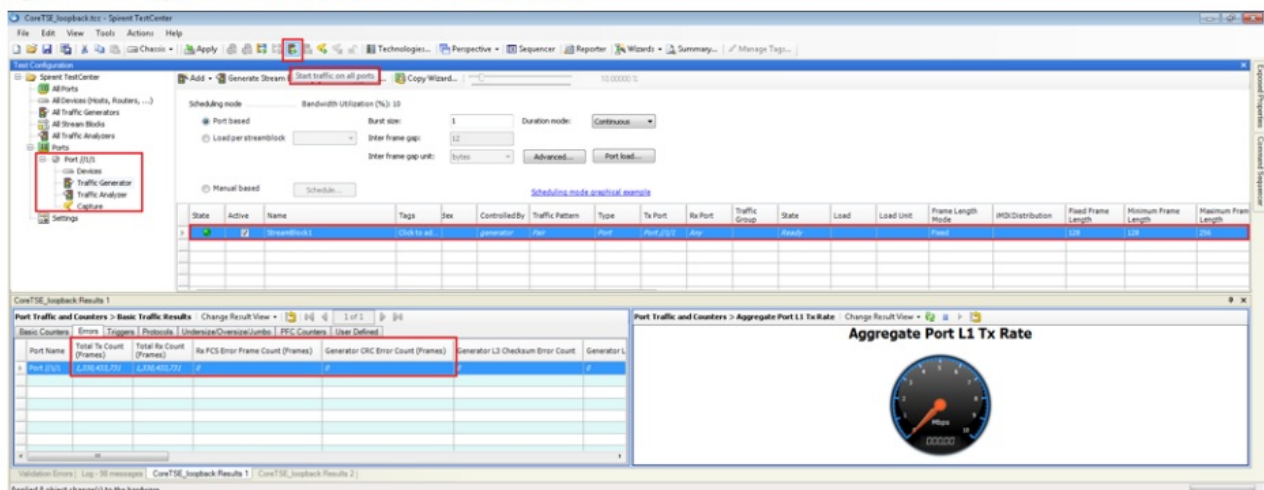
1. Connect the SmartFusion2 Security Evaluation Kit to the slot 1 Ethernet port on the Spirent test equipment using the RJ45 cable.
2. On the host PC, open the Spirent test center configurator.
3. Add port (Ethernet) in Spirent test center, as shown in the following figure.

**Figure 14 • Spirent Test Center Stream Block – General Tab**



4. Select Traffic Generator under Ports, add packet information in stream block editor, and click Start Traffic on all ports, as shown in the following figure.

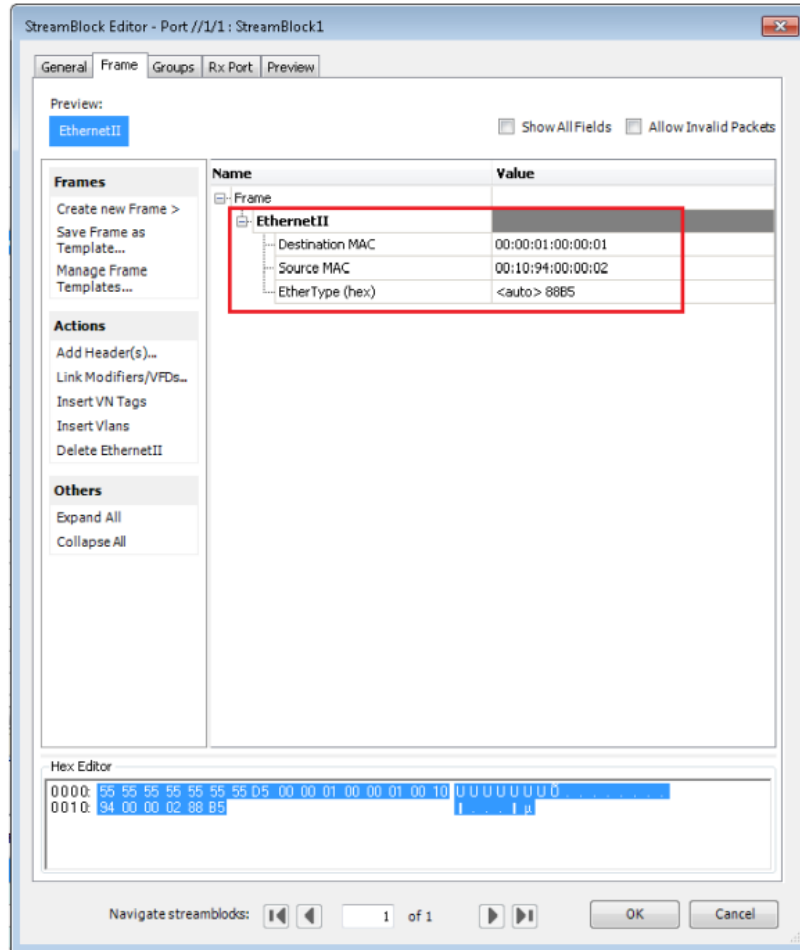
**Figure 15 • Spirent Test Center –Traffic Generator**



Ethernet packets are transmitted and received on port 1 through the RJ45 cable.

5. Observe the total TX, RX, RX FCS, and CRC error counts. The following figure shows the total TX, RX, RX FCS, and CRC error count information in Spirent test center. 0 indicates no loss in the packet transmission and reception.

**Figure 16 • Spirent Test Center Stream Block – Frame Tab**



6. Click OK to close the Stream Block Editor.



**Microsemi Corporate Headquarters**

One Enterprise, Aliso Viejo, CA 92656 USA

Within the USA: +1 (800) 713-4113

Outside the USA: +1 (949) 380-6100

Fax: +1 (949) 215-4996

Email: [sales.support@microsemi.com](mailto:sales.support@microsemi.com)

[www.microsemi.com](http://www.microsemi.com)


© 2017 Microsemi Corporation. All rights reserved.

Microsemi and the Microsemi logo are trademarks of Microsemi Corporation.





All other trademarks and service marks are the property of their respective owners.

50200637. 3.0 3/17

**Documents / Resources**

	<p><b><a href="#">Microsemi DG0637 SmartFusion2 SoC FPGA CoreTSE_AHB [pdf]</a></b> User Guide            DG0637 SmartFusion2 SoC FPGA CoreTSE_AHB, DG0637, SmartFusion2 SoC FPGA            CoreTSE_AHB, SoC FPGA CoreTSE_AHB, CoreTSE_AHB</p>
---	--

## References

-  [FPGA Documentation | Microchip Technology](#)
-  [FPGA Documentation | Microchip Technology](#)
-  [Microsemi | Semiconductor & System Solutions | Power Matters](#)
-  [microsemi.com/index.php?option=com\\_docman&task=doc\\_download&gid=134017](https://microsemi.com/index.php?option=com_docman&task=doc_download&gid=134017)