



# Microless Ergo Wireless Split Ergonomic Keyboard User Manual

[Home](#) » [Microless](#) » Microless Ergo Wireless Split Ergonomic Keyboard User Manual 

## Microless Ergo Wireless Split Ergonomic Keyboard



## Contents

- 1 THANK YOU
- 2 SPECIFICATIONS
- 3 WHATS IN THE BOX?
- 4 PRODUCT DESCRIPTION
- 5 Multimedia function description
- 6 CONNECT THE KEYBOARD
- 7 BEFORE FIRST USE
- 8 CLEANING AND MAINTENANCE
- 9 Documents / Resources
  - 9.1 References
- 10 Related Posts

## THANK YOU

THANK YOU FOR PURCHASING OUR ERGONOMIC WIRELESS BLUETOOTH KEYBOARD

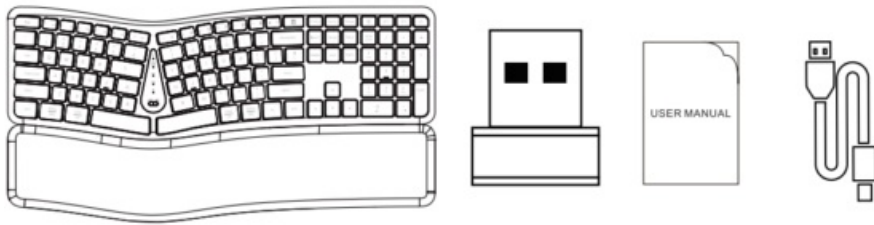
Please take a moment to read this user manual thoroughly, and keep it for future reference. This manual explains the features and functions of this product.

## SPECIFICATIONS

Type:	Ergonomic wireless Bluetooth keyboard
Connection method:	2.4G and Bluetooth
Receiver:	USB receiver
Size:	455.7 X 229.8 X 51.2 mm
Layout:	US
Color:	black & gray
Number of keys:	111 keys
Material:	ABS Plastic
Battery:	300mAh lithium battery
Charging cable:	TYPE-C
Water proof:	Yes
Automatic energy-saving mode:	Yes
Applicable to:	Windows 98/Me/2000/XP/Vista/7/8/10

## WHATS IN THE BOX?

- Keyboard x 1 pcs
- USB Receiver x 1 pcs
- User Manual x 1 pcs
- Charging Cable x 1 pcs



## PRODUCT DESCRIPTION



## Multimedia function description

F1=Mute  
 F2=Volume  
 F3=Volume+  
 F4=Previous track  
 F5=Play/Pause  
 F6=Next track  
 F7=Screen brightness+  
 F8=Screen brightness-  
 F9= Select All  
 F10=Copy  
 F11=Paste  
 F12=Cut



Calculator



Search



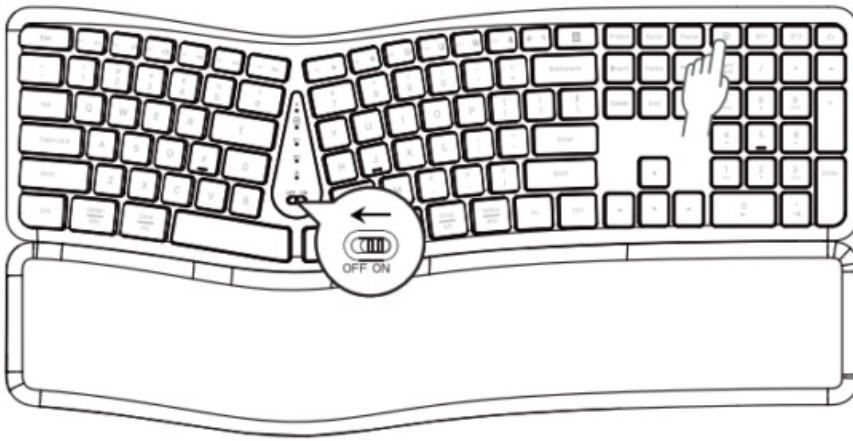
Browser

## CONNECT THE KEYBOARD

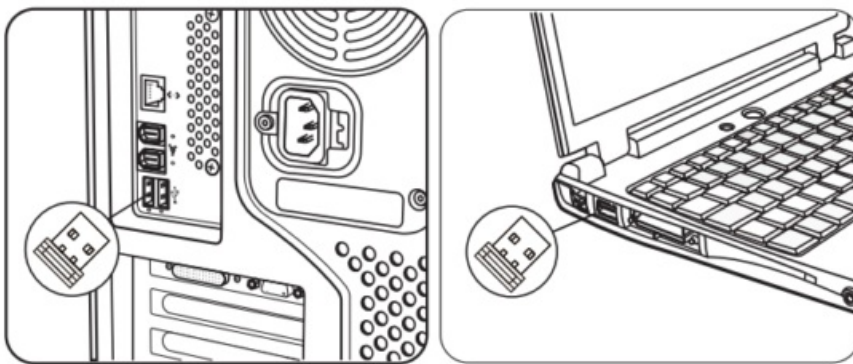
### USB Receiver Connection Method :

**Step 1:** Turn on the ON/OFF button to the “ON” position on the keyboard.

**Step 2:** Click the WiFi button in the upper right corner of the keyboard to ensure that the position indicator of the WiFi indicator light is flashing white.



**Step 3:** Remove the USB receiver from the bottom of the keyboard and insert it into your device. Wait for 1-3 seconds to connect successfully.



### Bluetooth Connection Method :

**Step 1:** Press the BT1 or BT2 button to ensure that the indicator light is flashing at the BT1 or BT2 indicator light position. Then press and hold the BT1 or BT2 button for 3-5 seconds. When the Bluetooth indicator light flashes rapidly, it indicates that Bluetooth is turned on.

**Step 2:** Turn on the Bluetooth of your Pc/Laptop, search for the Bluetooth name "BT3.0 Keyboard" or "BT5.0 KB" in your device, and click pair to complete the process.

### BEFORE FIRST USE

1. Before using the keyboard, be sure to carefully review the keyboard user manual and operate according to the requirements and specifications in the manual.
2. When cleaning the keyboard, do not rinse it directly with water, as it may result in the keyboard being scrapped.
3. The keyboard should be kept as dry as possible.

### CLEANING AND MAINTENANCE

1. **Disconnect keyboard power:** Turn off the computer and disconnect the keyboard power to prevent any accidents.
2. **Flip the keyboard upside down:** Gently tap the back to prevent dust and debris from falling off.
3. **Blow with an air cylinder:** Use a compressed air cylinder to spray the airflow into the gaps of the keyboard to remove dust and debris. Be careful not to overuse air pressure to avoid damaging the internal components of


the keyboard.

4. **Use a vacuum cleaner:** Use a small-sized vacuum cleaner equipped with a slender suction nozzle to gently remove dust and debris from the keyboard.
5. **Brush cleaning:** Use a soft bristled brush or keyboard cleaning brush to gently wipe the gaps between the keyboard surface and key positions to remove dirt and dust.
6. **Use cleaning liquid:** Spray an appropriate amount of keyboard cleaning liquid onto a cleaning cloth, and then gently wipe the surface and key positions of the keyboard with a damp cloth.  
Be careful not to excessively wet the keyboard to prevent liquid from seeping into its interior.
7. **Disinfection treatment:** Use disinfectant wipes or sprays to gently wipe the keyboard surface to kill bacteria and viruses.
8. **Regular cleaning:** Regularly clean the keyboard to maintain its cleanliness and hygiene.  
Thorough cleaning can be done every month or every few months.

#### Notes:

- Before cleaning the keyboard, make sure to disconnect the power and unplug the keyboard cable.
- Avoid using too much water or cleaning liquids to avoid damaging the keyboard.
- Do not pour cleaning liquid into the keyboard.
- When cleaning the keyboard, be careful to avoid damaging the internal components of the keyboard.
- If the keyboard is severely dirty or damaged, it is best to seek professional advice or seek professional cleaning services.

#### Documents / Resources

	<p><a href="#">Microless Ergo Wireless Split Ergonomic Keyboard</a> [pdf] User Manual T1 Ergo Wireless Split Ergonomic Keyboard, T1, Ergo Wireless Split Ergonomic Keyboard, Wireless Split Ergonomic Keyboard, Split Ergonomic Keyboard, Ergonomic Keyboard</p>
---	--

#### References

- [User Manual](#)

[Manuals+](#), [Privacy Policy](#)

This website is an independent publication and is neither affiliated with nor endorsed by any of the trademark owners. The "Bluetooth®" word mark and logos are registered trademarks owned by Bluetooth SIG, Inc. The "Wi-Fi®" word mark and logos are registered trademarks owned by the Wi-Fi Alliance. Any use of these marks on this website does not imply any affiliation with or endorsement.