


# MICROCHIP PIC32CX-BZ2 Curiosity Board User Guide

[Home](#) » [MICROCHIP](#) » MICROCHIP PIC32CX-BZ2 Curiosity Board User Guide 



## Contents

- [1 Introduction](#)
- [2 Features](#)
- [3 Quick References](#)
- [4 Hardware](#)
- [5 Getting Started](#)
- [6 Document Revision History](#)
- [7 Worldwide Sales and Service](#)
- [8 Documents / Resources](#)
  - [8.1 References](#)
- [9 Related Posts](#)

## Introduction

The WBZ451 Curiosity Board is an efficient and modular development platform that supports rapid prototyping and demonstrates the features, capabilities, and interfaces of Microchip's BLE+Zigbee RF Module WBZ451. This board offers integrated programming/debugging features using PICKIT On-Board (PKOB4) debugger and requires only a micro-USB cable to power up and program the board. Users can expand its functionality through MikroElektronika mikroBUS Click™ adapter boards and do rapid prototyping utilizing the BLE+Zigbee enabled RF Module.

The WBZ451 Curiosity Board supports a variety of applications such as wireless lightning, home automation/Internet of Things (IoT), industrial automation, and other BLE or Zigbee-related applications.

## Features

- WBZ451 BLE+Zigbee RF Module
- USB or Battery Powered
- On-board Programmer/Debug Circuit using PKoB4 based on Microchip SAME70 MCU
- Microchip MCP73871 Li-Ion/LiPo Battery Charger with Power Path Management
- On-board USB to UART Serial Converter with HW Flow Control based on Microchip MCP2200
- mikroBUS Adapter Boards
- RGB Lighting LED connected to PWM
- Reset Switch
- One User Configurable Switch
- One User LED
- 32.768 kHz Crystal
- Microchip SST26VF064B, 64 Mbit External QSPI Flash
- Microchip MCP9700A, Low Power Analog Voltage Temperature Sensor
- 10-pin ARM SWD Header for External Programmer/Debugger™ Socket to Expand Functionality using MikroElektronika Click™ For more details, refer to the 3. Hardware.

## Quick References

### 1.1 Design Documentation

The WBZ451 Curiosity Board design documentation has the following packages:

- Schematics
- BOM
- Assembly drawings
- Layer plots

Note: Please contact Microchip Sales Representative for more information.

### 1.2 Reference Documentation

1. PIC32CX1012BZ25048/WBZ451 Data Sheet.

### 1.3 Hardware Prerequisites

- WBZ451 Curiosity Board kit

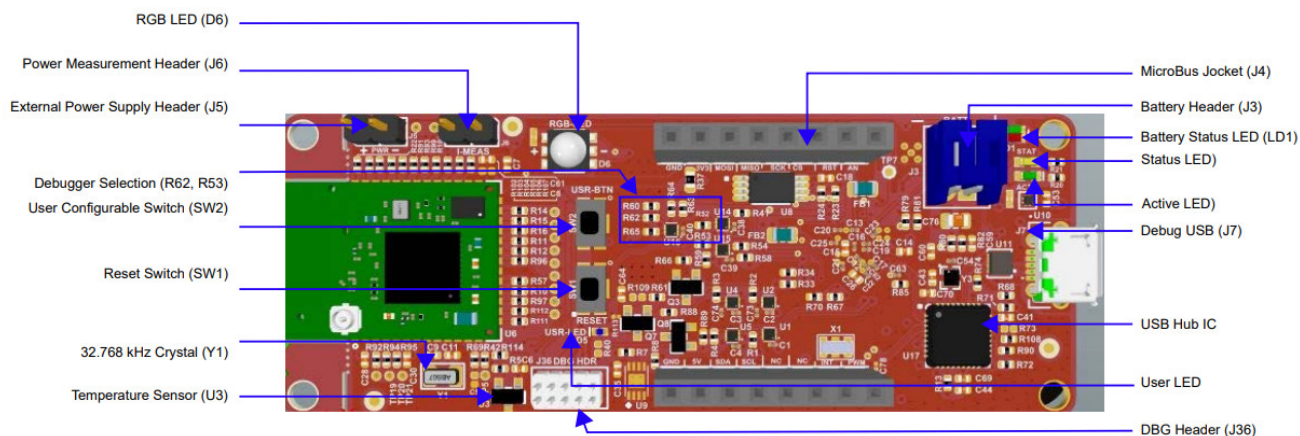
### 1.4 Software Prerequisites

- MPLABx IDE v5.45 and above ([www.microchip.com/mplab/mplab-x-ide](http://www.microchip.com/mplab/mplab-x-ide))
- MPLABx XC32 Compiler v1.40 and above ([www.microchip.com/mplab/compilers](http://www.microchip.com/mplab/compilers))
- Harmony 3 Configurator: Installed as a plugin in MPLABX
- Device Pack – Microchip.PIC32CX-BZ\_DFP-1.0.54 and above

## Kit Overview

The WBZ451 Curiosity Board contains a WBZ451 module. All the signals from the WBZ451 RF module are connected to onboard features on the curiosity board for flexibility and rapid prototyping.

**Figure 2-1. WBZ451 Curiosity Board**



## 2.1 Kit Contents

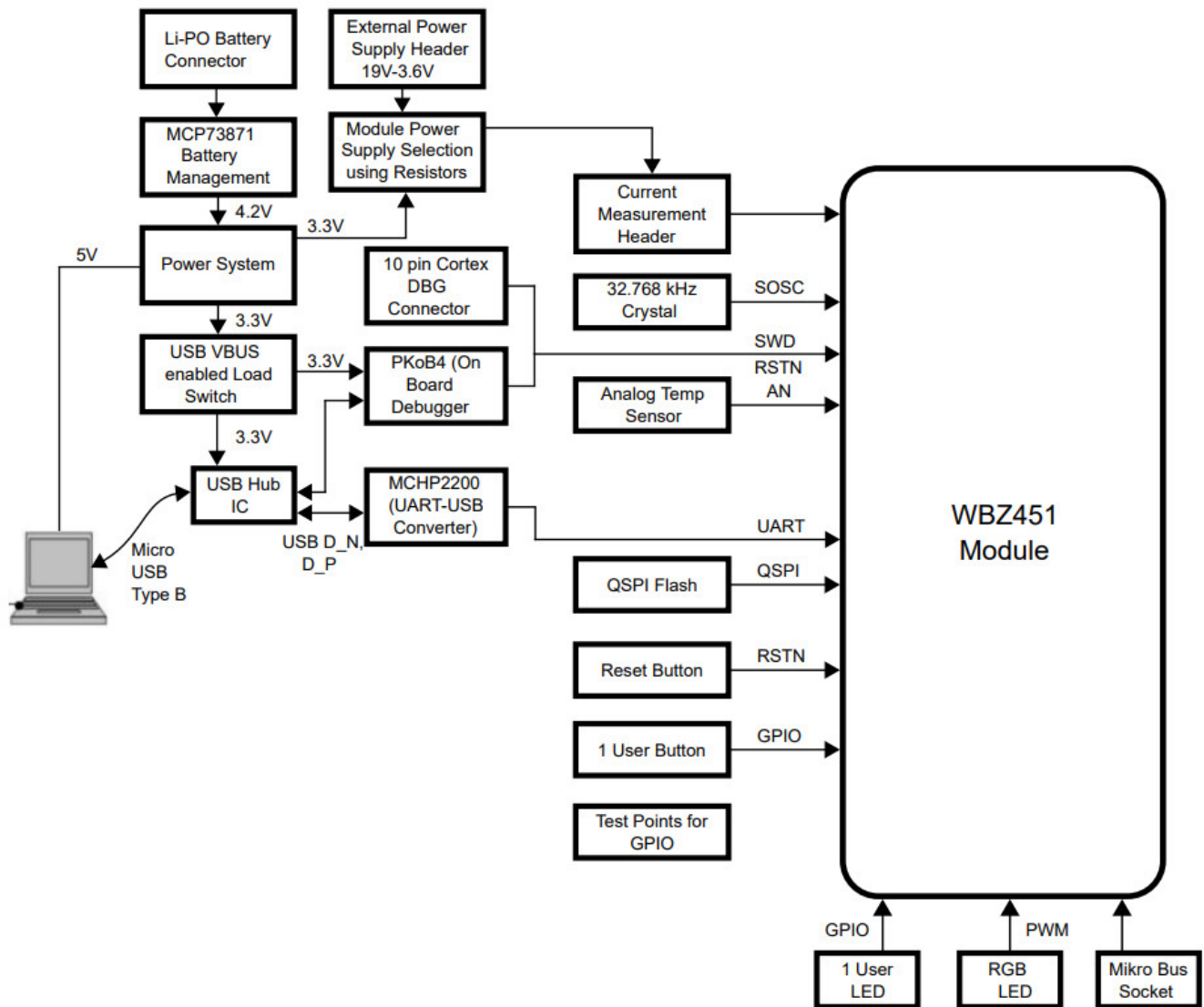
The WBZ451 Curiosity Board kit contains the following:

- WBZ451 Curiosity Board

## Hardware

This chapter describes the hardware features of the WBZ451 Curiosity Board.

**Figure 3-1. Block Diagram**



### 3.1 Power Supply

The WBZ451 Curiosity Board can be powered using any of the following sources:

1. USB power supply using Type-A male to micro-B USB cable.
2. 4.2V Li-ion/Li-Po Battery Kit as follows:
  - Connected to J3, JST PH, 2 pin, 2 mm pitch, right angle male battery header.
  - Crimp style connector, battery polarity according to +/- marking on curiosity board.
  - Battery is not part of the kit.
  - Minimum recommended battery capacity is 400 mAh with a battery charge voltage of 4.2V.
  - For example, refer to the [www.adafruit.com/product/258](http://www.adafruit.com/product/258).

The battery management circuit automatically handles the selection between the USB power supply and the battery supply.

The onboard MCP1727 voltage regulator generates a +3.3V power supply. WBZ451 module and associated circuit default powered by +3.3V.

WBZ451 module can also be powered from:

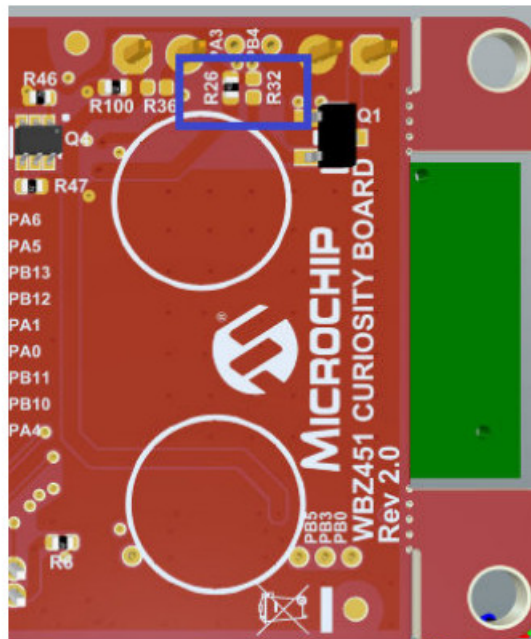
- External power supply header (J5) using an external power supply (1.9V-3.6V) for testing at different voltage levels apart from the default supply of 3.3V from the on-board regulator. To use the external power supply

header, disconnect the onboard +3.3V supply according to the following table:

Table 3-1. Resistor Option to select WBZ451 Module Power Supply

On-board 3.3V Regulator	External Power Supply
Mount R26	Do not mount R26
Do not mount R32	Mount R32

Figure 3-2. Resistor Position to select WBZ451 Module Power Supply



### 3.2 Li-Po Battery Charger

A 4.2V, Li-Po Battery connected to the 2 pin, 2 mm pitch right angle male battery header. JST PH connector can be charged using Battery Management IC MCP73871-2CC from the USB power supply at 100 mA fast charge current.

Table 3-2. LD1 Battery Charger Status LED

LED Color	Function
Red (charging)	The battery is charged by the USB when the USB is plugged in.
Red (discharging)	The battery voltage is low. Triggers, if the voltage is under 3.1V.
Green	Charge complete

### 3.3 Debugger/Programmer Selection

By default, the on-board debugger (PKOB4) is connected to the programming pins (SWDIO and SWDCLK) of the WBZ451 module.

The WBZ451 Curiosity Board has an on-board debugger (PKOB4) based on the ATSAME70 USB MCU. The onboard debugger enables the user to power, program and debug through the micro-B USB connector (J7) from the Host PC. The voltage level translators are provided on signals between PKoB4 and WBZ451 module for supporting target voltage from 1.9V-3.6V.

In addition, the curiosity board supports external debuggers, such as MPLAB ICD4, MPLAB PICKIT4, MPLAB SNAP by connecting to the DBG header (J36).

To use external debugger on the SWD connector, remove resistors R53 and R62 to disconnect the on-board debugger from driving the programming pins.

**Table 3-3. Resistor Position for Debugger Selection**

On-Board PKOB4	External Debugger
R53 mounted	R53 not mounted
R62 mounted	R62 not mounted

DBG Header (J36) follows the standard ARM SWD 10 pinout shown in the following figure. MPLAB ICD4, MPLAB PICKIT4 MPLAB SNAP can be connected to DBG header using a debugger adapter board (AC102015). For more details, refer to the [www.microchip.com/DevelopmentTools/ProductDetails/AC102015](http://www.microchip.com/DevelopmentTools/ProductDetails/AC102015).

**Table 3-4. SWD DBG Header Details**

Pin Number of DBG Header	Pin Name	Description
1	VCC	RF module power supply
2	SWDIO	PB9, SWD programming data
3	GND	Ground
4	SWCLK	PB8, SWD programming clock
5	GND	Ground
6	SWO	PB7, optional trace output
7	NC	No connection
8	NC	No connection
9	GND	Ground
10	RESET	RF module reset NMCLR pin

### 3.4 USB-UART Virtual COM Port

The WBZ451 Curiosity Board has an on-board MCP2200 acts as a USB to UART converter with hardware flow control support and enables the user through the micro-B USB connector (J7) from the Host PC. MCP2200 supports UART baud rates from 300-1000 kbps. Voltage level translators are provided on signals between MCP2200 and WBZ451 module for supporting target voltage from 1.9V-3.6V when powered externally.

Table 3-5. USB Serial Converter Pin Assignment

Pin on MCP2200	Pin on WBZ451 Module	Description
Tx	PA6, SERCOM0_PAD1	UART Rx pin of WBZ451 module
Rx	PA5, SERCOM0_PAD0	UART Tx pin of WBZ451 module
RTS	PA4, SERCOM0_PAD3	UART CTS pin of WBZ451 module
CTS	PA3, SERCOM0_PAD2	UART RTS pin of WBZ451 module

### 3.5 mikroBUS Socket

A mikroBUS socket (J4) expands the functionality of the WBZ451 Curiosity Board using the MikroElektronika click adapter boards. The mikroBUS connector consists of two 1 x 8 female headers with Serial Peripheral Interface (SPI), Inter-Integrated Circuit (I<sup>2</sup>C), Reset Pin (RST), Pulse Width Modulation (PWM), analog and interrupt lines, as well as 3.3V, 5V, and ground power lines. A complete listing of click boards can be found at [www.mikroe.com/click](http://www.mikroe.com/click). 2C, SPI peripherals, and other GPIO pins are as follows.

The GPIO pins for the mikroBUS sockets are assigned to route I<sup>2</sup>C Table 3-6. mikroBUS Socket Pinout Details

Pin Number	Pin Name	Pin on WBZ451 Module	Description
1	AN	PB1, AN5	ADC analog input
2	RST	PB2	General purpose I/O pin
3	CS	PA9, SERCOM1_PAD2	Slave select pin for SPI/ General purpose I/O pin
4	SCK	PA8, SERCOM1_PAD1	SPI clock
5	MISO	PA10, SERCOM1_PAD3	SPI master input slave output
6	MOSI	PA7, SERCOM1_PAD0	SPI master output slave input
7	+3.3V	+3.3V	3.3V power
8	GND	GND	Ground
9	GND	GND	Ground
10	+5V	+5V	5V power
11	SDA	PA13, SERCOM2_PAD0	I <sup>2</sup> C data
12	SCL	PA14, SERCOM2_PAD1	I <sup>2</sup> C clock
13	TX	–	–
14	RX	–	–
15	INT	PA2	Interrupt pin/General purpose I/O pin. Shared with PWM pin
16	PWM	PA2	PWM pin/General purpose I/O pin. Sh ared with INT pin

**Note:** In the mikroBUS socket, both INT and PWM are connected to PA2, click board use both of them simultaneously are not supported (for example, refer to the [www.mikroe.com/stepper-2-click](http://www.mikroe.com/stepper-2-click)).

### 3.6 Switches

The following switches are available on the WBZ451 Curiosity Board:

- Reset switch (SW1)
- User configurable switch (SW2)

In the Idle state, the level of the reset switch is pulled high using an external pull-up resistor and, when the switch is pressed, it drives the level of the switch to low.



User configurable switch is also pulled high using an external pull-up resistor and when the switch is pressed it drives pin low.

**Table 3-7. Switches Description**

Switch Name	Pin on WBZ451 Module	Description
Reset	NMCLR	Reset switch (SW1) connected to NMCLR pin
USR-BTN	PB4	User configurable switch (SW2)

### 3.7 LEDs

One user-programmable blue indicator LED (D5) is available on the WBZ451 Curiosity Board and this LED can be turned ON or OFF using the connected GPIO pin PB7. Drive the pin to a high level to turn OFF the LED and drive the pin to a low level to turn ON the LED.



**Important:** PB7 is also an SWO pin on the WBZ451 module. During a programming/debug session with MPLABx IDE this pin is always driven low from the WBZ451 module, thus making the user LED turned ON entire DEBUG session. When DEBUG session is exited, this pin operates normally.

### 3.8 Temperature Sensor

The analog output from the temperature sensor (2.3V-5.5V Microchip MCP9700A, U3) is connected to one of the analog pins (PB6, AN2) of the module's ADC channel.

### 3.9 QSPI Serial Flash

The WBZ451 Curiosity Board has an onboard 64-Mb, 2.3-3.6V Serial Quad I/O (SQI) Flash (SST26VF064B, U6) memory for the storage of data. SST26VF064B default at power-up is with WP# and HOLD pins enabled and SIO2 and SIO3 pins disabled allowing for SPI protocol operations without register configuration. Register configuration is required to switch to Quad I/O operation with QSPI.

**Table 3-8. QSPI Flash Pin Description**

QSPI Flash	Pin on WBZ451 Module	Description
CE	PB10, QSPI_CS	QSPI chip select
SO/SIO1	PB13, QSPI_DATA1	QSPI data channel 1
WP/SIO2	PA0, QSPI_DATA2	QSPI data channel 2
VSS	GND	Ground
SI/SIO0	PB12, QSPI_DATA0	QSPI data channel 0
SCK	PB11, QSPI_SCK	QSPI clock
Hold/SIO3	PA1, QSPI_DATA3	QSPI data channel 3
VDD	VDD	VDD

### 3.10 RGB Lighting LED

Three PWM signals from the WBZ451 module are connected to RGB Lighting LED (D6) on the WBZ451 Curiosity Board.

**Table 3-9. RGB Lighting LED Pin Description**



Color	Pin on WBZ451
Red	PB0
Green	PB3
Blue	PB5

### 3.11 Power Measurement Header

To measure the power going to the WBZ451 module, a 1×2, 2.54 mm male pin header with a shunt connector (I-MEAS, J6) is provided.

### 3.12 32.768 kHz Crystal

The 32.768 kHz crystal is connected to SOSC pins (PA11 and PA12) of the WBZ451 module.

## Getting Started

### 4.1 Introduction

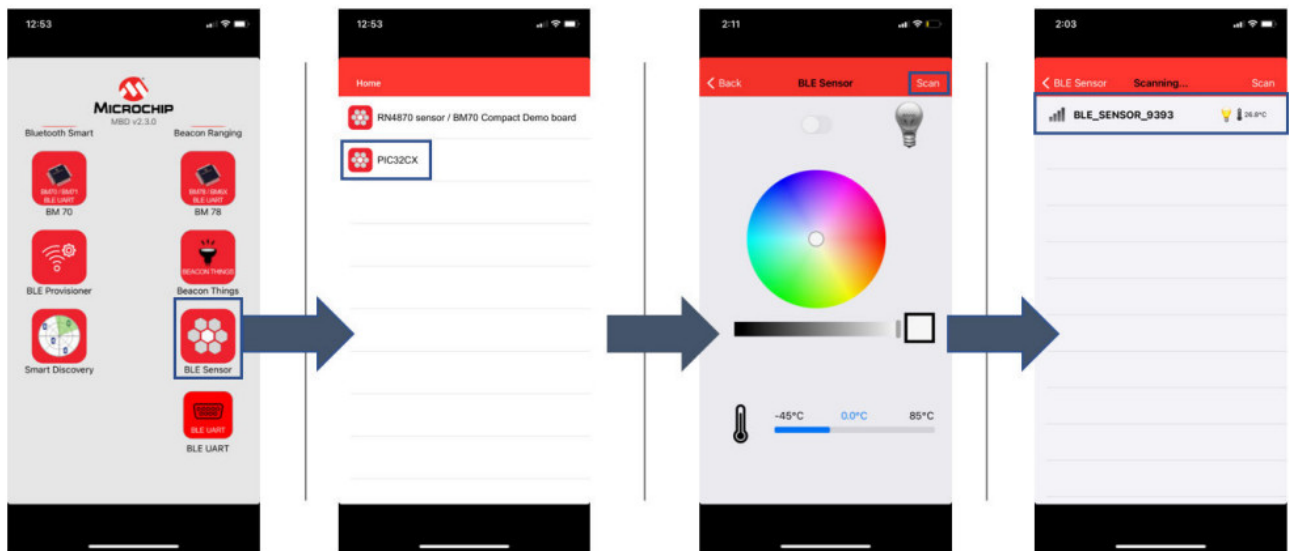
The BLE sensor application is an excellent demonstration of one of the many real-world Bluetooth Low Energy (BLE) applications involving monitor and control of sensors, lights and so on, wirelessly. This application brings BLE concepts like advertisements and connection establishment to practice. The demo consists of the WBZ451 Curiosity Board with accompanying BLE firmware, the Microchip Bluetooth Data (MBD) smartphone application. The MBD application has the capability to scan for BLE advertisements from the WBZ451 module and to establish a connection.

Scan operation monitors the temperature sensor and status of RGB LED (ON or OFF). Establishing a BLE connection with the WBZ451 module enables users to control the RGB status (ON or OFF) as well as the intensity and color of the RGB LED using slide controls.

### 4.2 BLE Sensor Application Demo

1. Installing the MBD smartphone application as follows:
  - 1.1. iOS users can search for the Microchip Bluetooth Data application in App Store and install it.
  - 1.2. Android users can directly install the xxx.apk file available as part of the early adopter package.
  - 1.3. Enable Bluetooth on the smartphone.
2. Launch the application.
3. Supplying power to WBZ451 Curiosity Board as follows:
  - 3.1. Connect a USB cable to the kit or a 4.2V Li-ion/Li-Po Battery. For more details, refer to the 3.1 Power Supply.
  - 3.2. The user-programmable blue LED starts blinking on Curiosity Board when the board is in advertisement mode.
4. Monitoring RGB LED state and temperature as follows:
  - 4.1. WBZ451 Curiosity Board starts in advertisement mode to advertise its presence to a smartphone and to allow access to RGB LED ON or OFF state and temperature sensor data.
  - 4.2. Navigate through the smartphone application as shown in the following figure to access the advertisement information.

Figure 4-1. MBD Smartphone Application



5. Controlling RGB LED state ON or OFF as well as intensity and color as follows:

5.1. Click the device that shows up after initiating a scan to establish a connection with the WBZ451 module.



5.2. – Controls the RGB LED state ON or OFF.



5.3. – Controls the color of RGB LED when LED is ON.



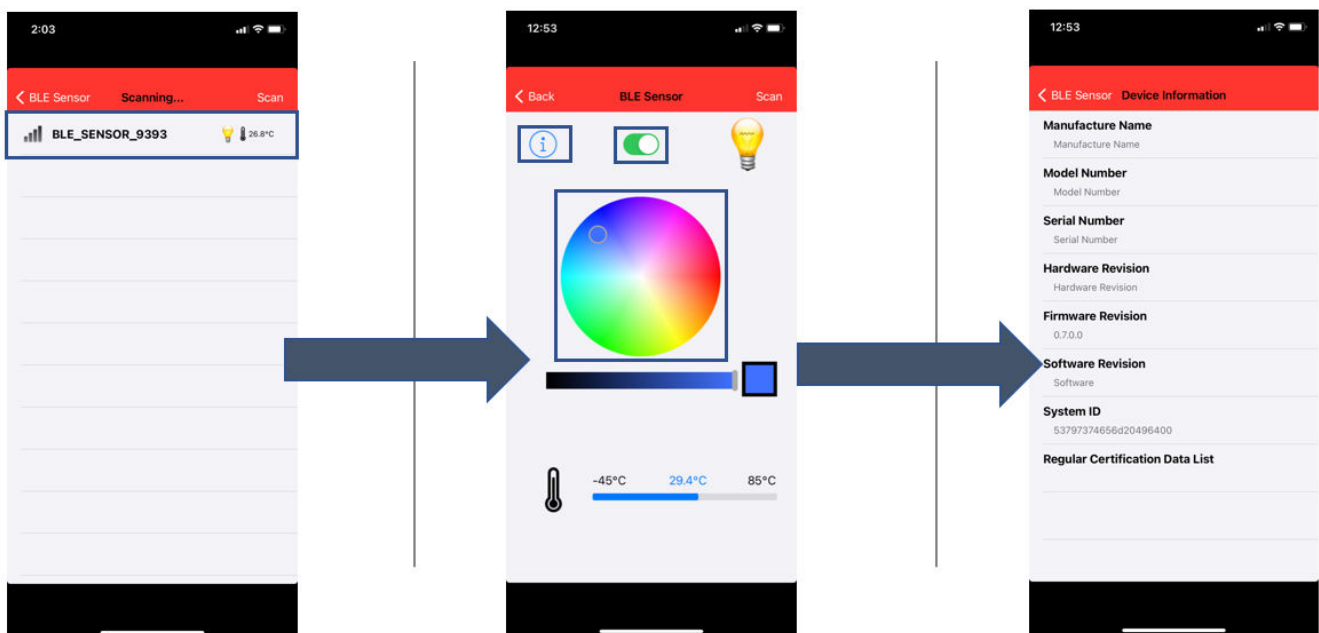
5.4. – Controls the intensity of RGB LED when LED is ON.



5.5. – Additional information.

5.6. Press the (SW2) button on the curiosity board to toggle the state of the RGB LED, the status of the RGB LED is relayed to the smartphone application.

Figure 4-2. Status of Smartphone Application



6. Disconnecting the WBZ451 module from the MBD application as follows:

6.1. Press the reset button on WBZ451 Curiosity Board.

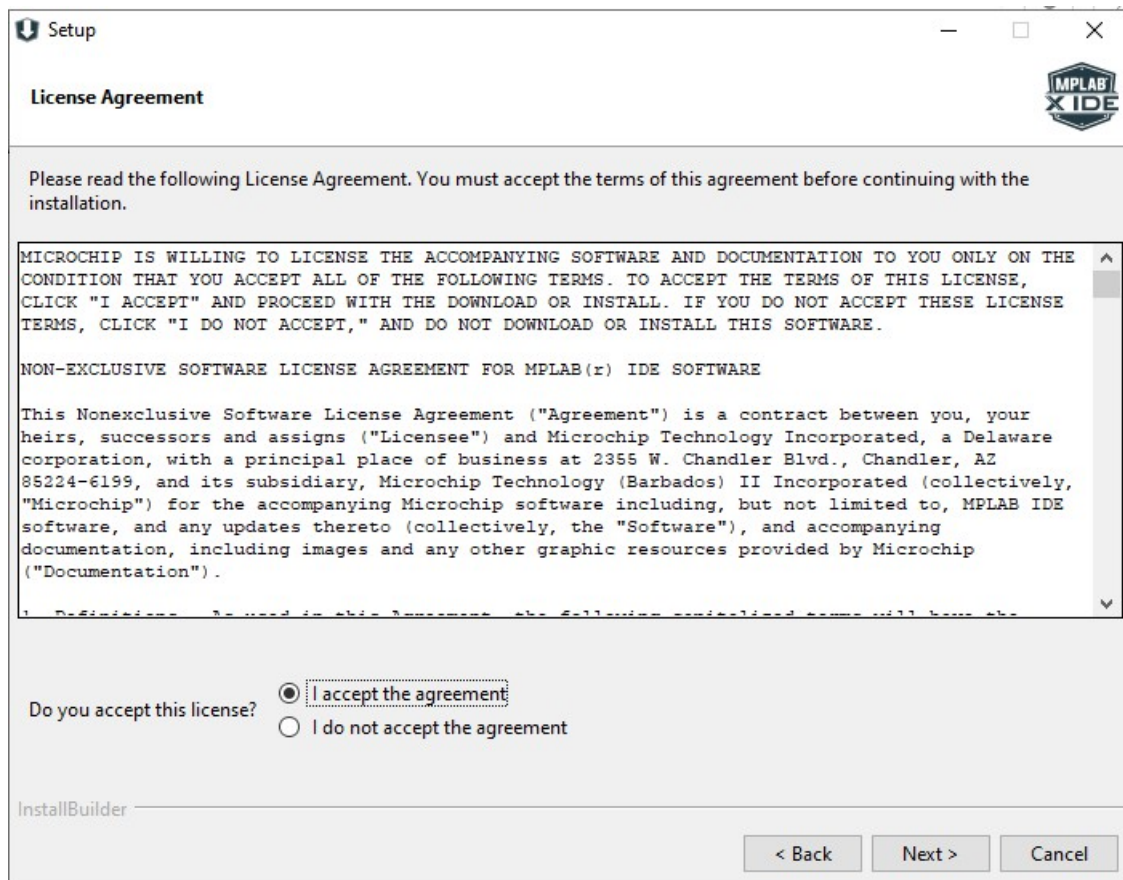
6.2. Disable Bluetooth on smartphone.

Upon successful disconnection, the WBZ451 module starts in advertisement mode.

## 4.3 Tools Setup

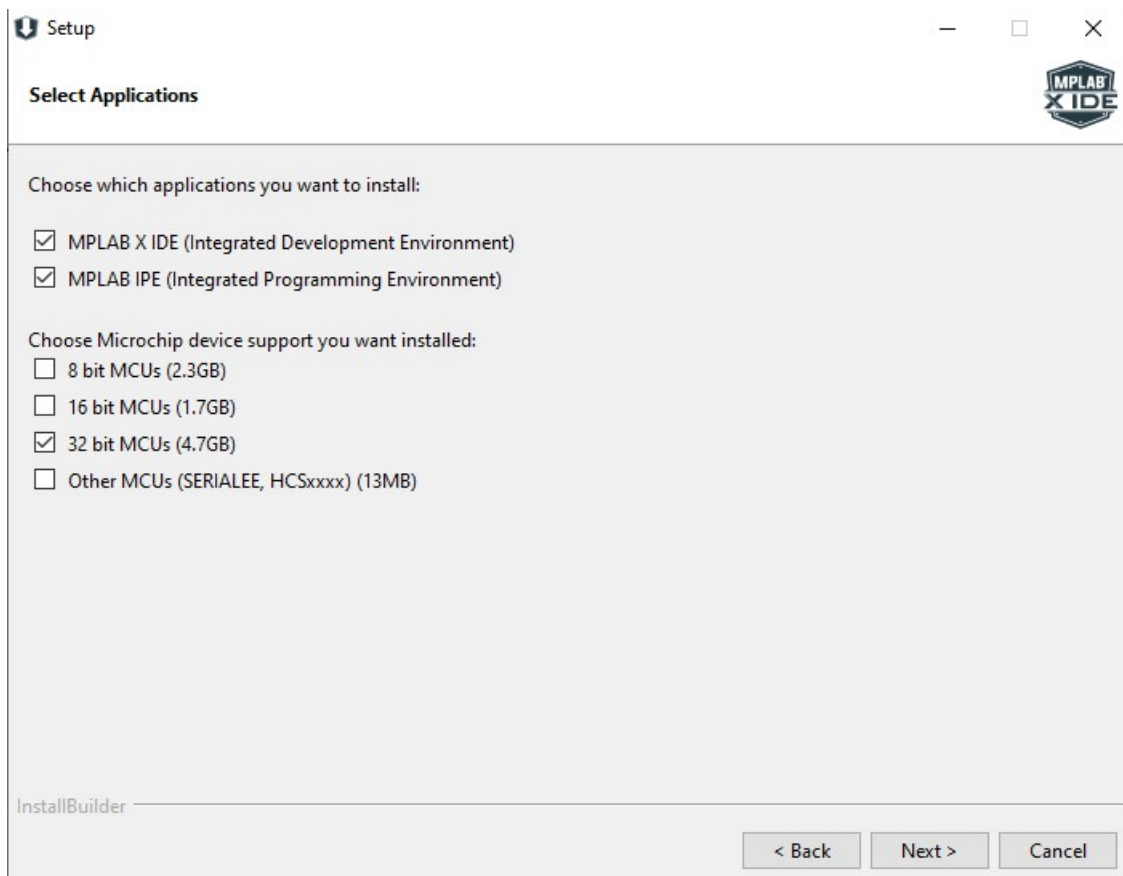
### 4.3.1 Installing MPLABx IDE and IPE

1. Refer to the 1.4 Software Prerequisites to download the required version of MPLABx IDE.
2. Execute the installer to begin the installation of MPLABx IDE.



3. Choose both MPLABx IDE and MPLABx IPE and click Next.

Figure 4-4. Select Applications for Installation



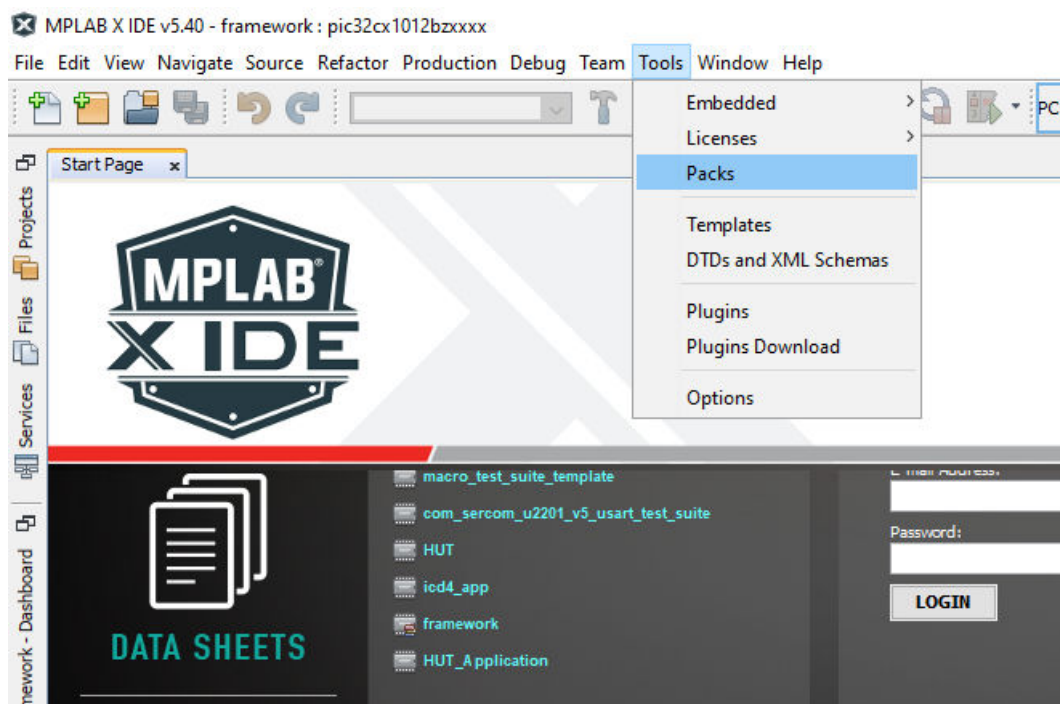
4. Click Next on upcoming windows to complete the installation.
5. For more details, refer to the MPLABx IDE Userguide ([docs.microchip.com/ContentDelivery/web/pub.xql?c=t&action=home&pub=MPLAB\\_X\\_IDE\\_User\\_Guide&lang=en-US](https://docs.microchip.com/ContentDelivery/web/pub.xql?c=t&action=home&pub=MPLAB_X_IDE_User_Guide&lang=en-US)).

#### 4.3.2 Installing Part Pack for PIC32CX1012BZ25048

Required version of device part pack may come preinstalled with MPLABx IDE. If newer or different part packs are needed, follow these instructions:

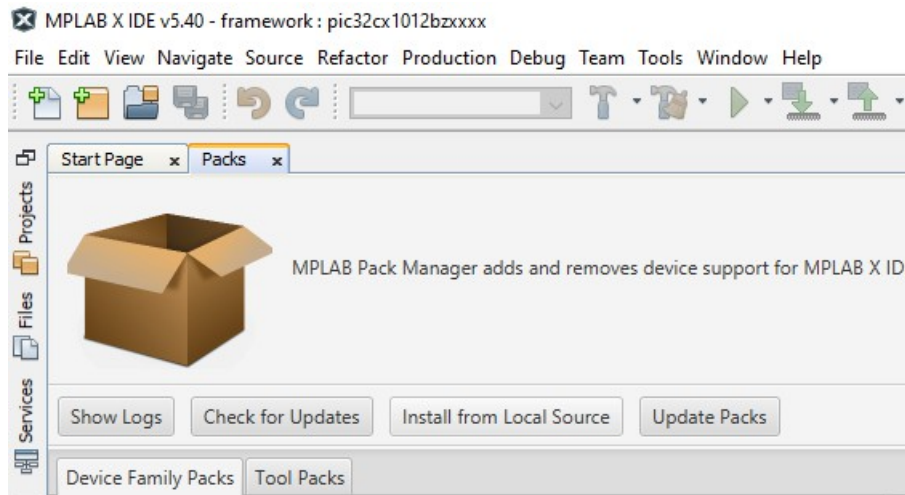
1. Open MPLABx IDE.
2. Go to Tools > Packs.

**Figure 4-5. Packs Installation**



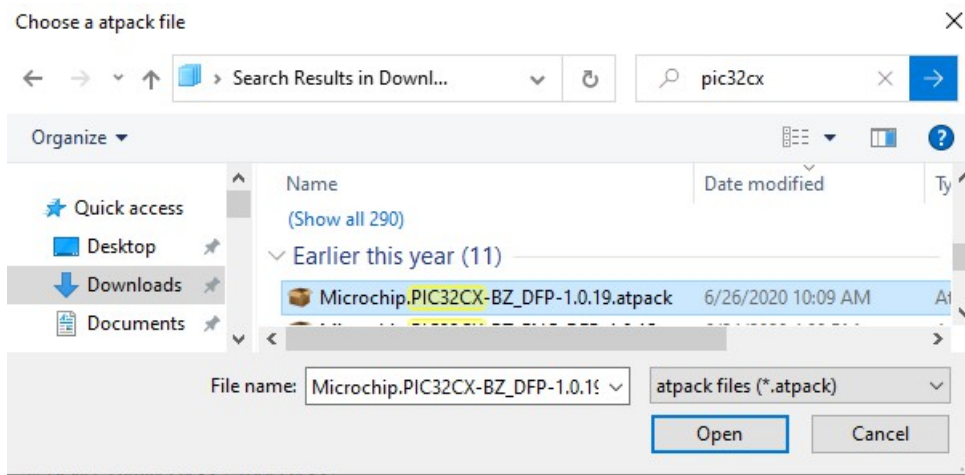
3. Click Install from Local Source.

Figure 4-6. Installing from Local Source



4. Browse to the location, where part pack is located and click Open.

Figure 4-7. Selecting Pack File

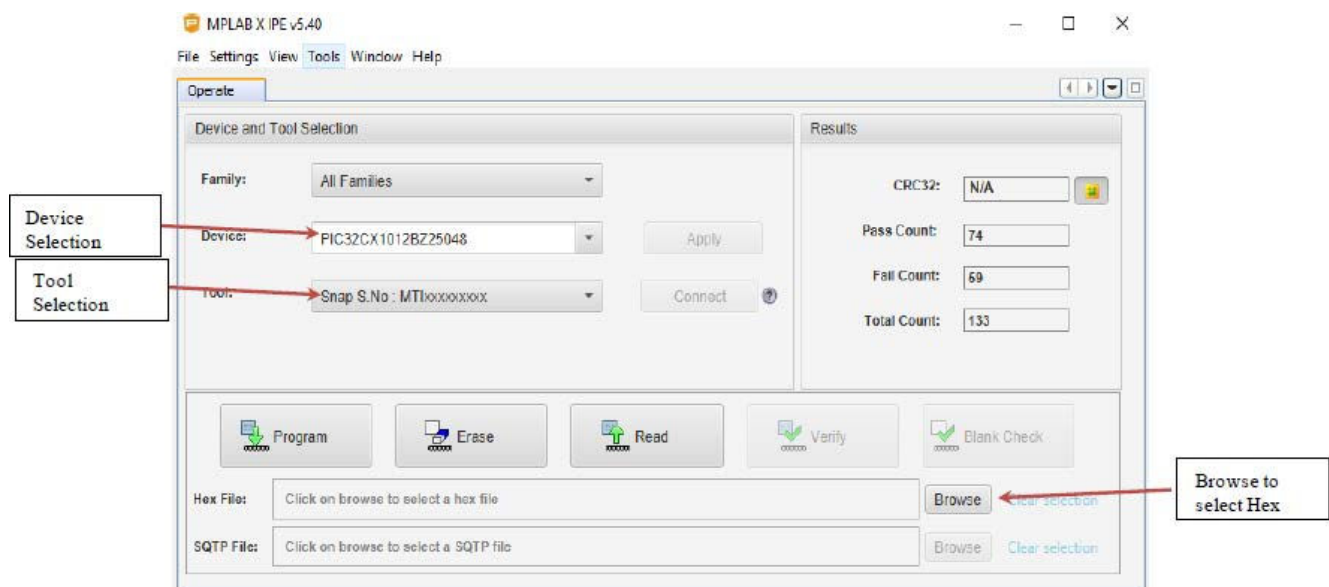


5. Wait for the installation to complete.

#### 4.4 Programming via MPLABX IPE

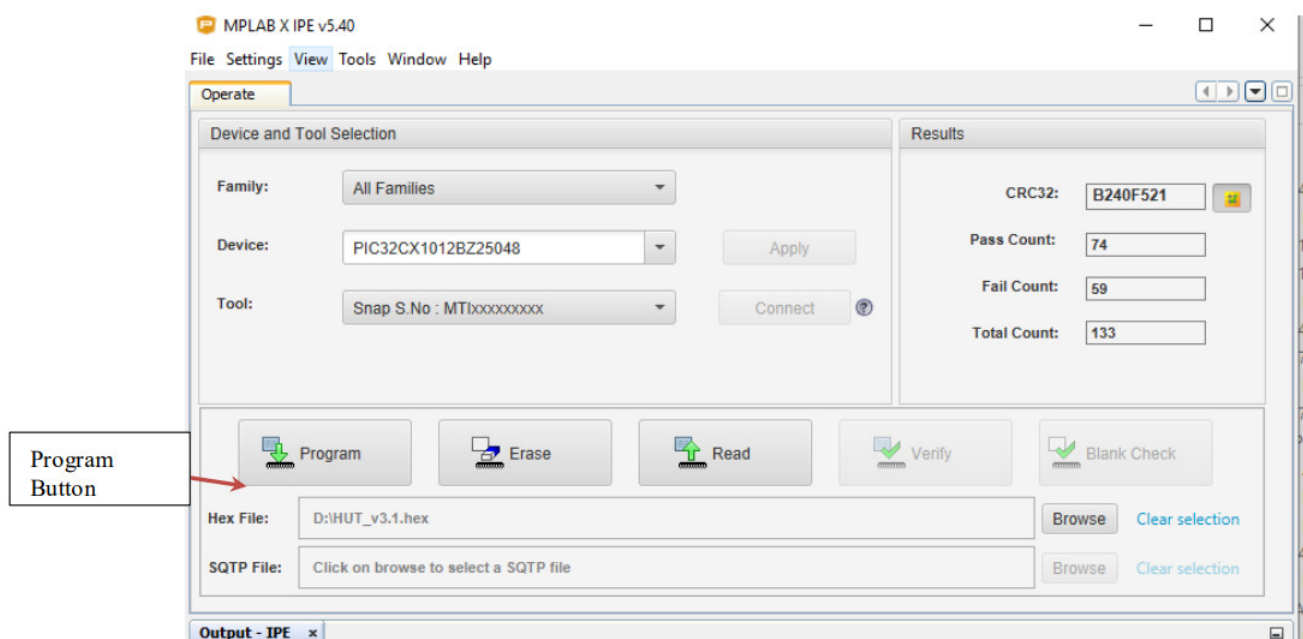
1. Connect the WBZ451 Curiosity Board to the PC using a USB cable, from the MPLABx IPE tool, select Device "PIC32CX1012BZ25048" and the Tool Connected.
2. Check the Device Manager.
3. Browse and point to the location where the Hex to be programmed is saved.

Figure 4-8. Programming via MPLABX IPE



4. Click the Program button to program the device with the selected Hex file.

Figure 4-9. Programming the Device with Hex File



5. Successful programming output in IPE is as follows.

Figure 4-10. Programming Output

```

Output - IPE x
Erasing...

The following memory area(s) will be programmed:
program memory: start address = 0x1000000, end address = 0x1040fff
boot config memory
Programming/Verify complete
2020-10-07 14:05:19 +0530 - Programming complete

```

## Document Revision History

Revision	Date	Section	Description
A	Oct-20	Document	Initial revision

## The Microchip Website

Microchip provides online support via our website at [www.microchip.com/](http://www.microchip.com/). This website is used to make files and information easily available to customers. Some of the content available includes:



- Product Support – Datasheets and errata, application notes and sample programs, design resources, user's guides and hardware support documents, latest software releases, and archived software
- General Technical Support – Frequently Asked Questions (FAQs), technical support requests, online discussion groups, Microchip design partner program member listing
- Business of Microchip – Product selector and ordering guides, latest Microchip press releases, listing of seminars and events, listings of Microchip sales offices, distributors, and factory representatives

### **Product Change Notification Service**

Microchip's product change notification service helps keep customers current on Microchip products. Subscribers will receive email notifications whenever there are changes, updates, revisions or errata related to a specified product family or development tool of interest.

To register, go to [www.microchip.com/pcn](http://www.microchip.com/pcn) and follow the registration instructions.

### **Customer Support**

Users of Microchip products can receive assistance through several channels:

- Distributor or Representative
- Local Sales Office
- Embedded Solutions Engineer (ESE)
- Technical Support

Customers should contact their distributor, representative, or ESE for support. Local sales offices are also available to help customers. A listing of sales offices and locations is included in this document.

Technical support is available through the website at: [www.microchip.com/support](http://www.microchip.com/support)

### **Microchip devises Code Protection Feature**

Note the following details of the code protection feature on Microchip devices:

- Microchip products meet the specifications contained in their particular Microchip Data Sheet.
- Microchip believes that its family of products is secure when used in an intended manner and under normal conditions.
- There are dishonest and possibly illegal methods being used in attempts to breach the code protection features of the Microchip devices. We believe that these methods require using the Microchip products in a manner outside the operating specifications contained in Microchip's Data Sheets. Attempts to breach these code protection features, most likely, cannot be accomplished without violating Microchip's intellectual property rights.
- A microchip is willing to work with any customer who is concerned about the integrity of its code.
- Neither Microchip nor any other semiconductor manufacturer can guarantee the security of its code. Code protection does not mean that we are guaranteeing the product is "unbreakable." Code protection is constantly evolving. We at Microchip are committed to continuously improving the code protection features of our products.

Attempts to break Microchip's code protection feature may be a violation of the Digital Millennium Copyright Act.

If such acts allow unauthorized access to your software or other copyrighted work, you may have a right to sue for relief under that Act.



## Trademarks

The Microchip name and logo, the Microchip logo, Adaptec, AnyRate, AVR, AVR logo, AVR Freaks, BesTime, BitCloud, chipKIT, chipKIT logo, CryptoMemory, CryptoRF, dsPIC, FlashFlex, flexPWR, HELDO, IGLOO, JukeBlox, KeeLoq, Kleer, LANCheck, LinkMD, maXStylus, maXTouch, MediaLB, megaAVR, Microsemi, Microsemi logo, MOST, MOST logo, MPLAB, OptoLyzer, PackeTime, PIC, picoPower, PICSTART, PIC32 logo, PolarFire, Prochip Designer, QTouch, SAM-BA, SenGenuity, SpyNIC, SST, SST Logo, SuperFlash, Symmetricom, SyncServer, Tachyon, TempTrackr, TimeSource, tinyAVR, UNI/O, Vectron, and XMEGA are registered trademarks of Microchip Technology Incorporated in the U.S.A. and other countries.

APT, ClockWorks, The Embedded Control Solutions Company, EtherSynch, FlashTec, Hyper Speed Control, HyperLight Load, IntelliMOS, Libero, motorBench, mTouch, Powermite 3, Precision Edge, ProASIC, ProASIC Plus, ProASIC Plus logo, Quiet-Wire, SmartFusion, SyncWorld, Temux, TimeCesium, TimeHub, TimePictra, TimeProvider, Vite, WinPath, and ZL are registered trademarks of Microchip Technology Incorporated in the U.S.A.

Adjacent Key Suppression, AKS, Analog-for-the-Digital Age, Any Capacitor, AnyIn, AnyOut, BlueSky, BodyCom, CodeGuard, CryptoAuthentication, CryptoAutomotive, CryptoCompanion, CryptoController, dsPICDEM, dsPICDEM.net, Dynamic Average Matching, DAM, ECAN, EtherGREEN, In-Circuit Serial Programming, ICSP, INICnet, Inter-Chip Connectivity, JitterBlocker, KleerNet, KleerNet logo, memBrain, Mindi, MiWi, MPASM, MPF, MPLAB Certified logo, MPLIB, MPLINK, MultiTRAK, NetDetach, Omniscient Code Generation, PICDEM, PICDEM.net, PICkit, PICtail, PowerSmart, PureSilicon, QMatrix, REAL ICE, Ripple Blocker, SAM-ICE, Serial Quad I/O, SMART- I.S., SQL, SuperSwitcher, SuperSwitcher II, Total Endurance, TSHARC, USBCheck, VariSense, ViewSpan, WiperLock, Wireless DNA, and ZENA are trademarks of Microchip Technology Incorporated in the U.S.A. and other countries.

SQTP is a service mark of Microchip Technology Incorporated in the U.S.A.

The Adaptec logo, Frequency on Demand, Silicon Storage Technology, and Symmcom are registered trademarks of Microchip Technology Inc. in other countries.

GestIC is a registered trademark of Microchip Technology Germany II GmbH & Co. KG, a subsidiary of Microchip Technology Inc., in other countries.

All other trademarks mentioned herein are property of their respective companies.

©2020, Microchip Technology Incorporated, Printed in the U.S.A., All Rights Reserved.

ISBN:

## Quality Management System

For information regarding Microchip's Quality Management Systems, please visit [www.microchip.com/quality](http://www.microchip.com/quality).

## Worldwide Sales and Service

AMERICAS	ASIA/PACIFIC	ASIA/PACIFIC
Corporate Office		

2355 West Chandler Blvd.  
Chandler, AZ 85224-6199  
Tel: 480-792-7200  
Fax: 480-792-7277  
Technical Support:  
[www.microchip.com/support](http://www.microchip.com/support)  
Web Address:  
[www.microchip.com](http://www.microchip.com)  
Atlanta  
Duluth, GA  
Tel: 678-957-9614  
Fax: 678-957-1455  
Austin, TX  
Tel: 512-257-3370  
Boston  
Westborough, MA  
Tel: 774-760-0087  
Fax: 774-760-0088  
Chicago  
Itasca, IL  
Tel: 630-285-0071  
Fax: 630-285-0075  
Dallas  
Addison, TX  
Tel: 972-818-7423  
Fax: 972-818-2924  
Detroit  
Novi, MI  
Tel: 248-848-4000  
Houston, TX  
Tel: 281-894-5983  
Indianapolis  
Noblesville, IN  
Tel: 317-773-8323  
Fax: 317-773-5453  
Tel: 317-536-2380  
Los Angeles  
Mission Viejo, CA  
Tel: 949-462-9523  
Fax: 949-462-9608  
Tel: 951-273-7800  
Raleigh, NC  
Tel: 919-844-7510  
New York, NY  
Tel: 631-435-6000  
San Jose, CA  
Tel: 408-735-9110  
Tel: 408-436-4270  
Canada – Toronto  
Tel: 905-695-1980  
Fax: 905-695-2078


Australia – Sydney  
Tel: 61-2-9868-6733  
China – Beijing  
Tel: 86-10-8569-7000  
China – Chengdu  
Tel: 86-28-8665-5511  
China – Chongqing  
Tel: 86-23-8980-9588  
China – Dongguan  
Tel: 86-769-8702-9880  
China – Guangzhou  
Tel: 86-20-8755-8029  
China – Hangzhou  
Tel: 86-571-8792-8115  
China – Hong Kong SAR  
Tel: 852-2943-5100  
China – Nanjing  
Tel: 86-25-8473-2460  
China – Qingdao  
Tel: 86-532-8502-7355  
China – Shanghai  
Tel: 86-21-3326-8000  
China – Shenyang  
Tel: 86-24-2334-2829  
China – Shenzhen  
Tel: 86-755-8864-2200  
China – Suzhou  
Tel: 86-186-6233-1526  
China – Wuhan  
Tel: 86-27-5980-5300  
China – Xian  
Tel: 86-29-8833-7252  
China – Xiamen  
Tel: 86-592-2388138  
China – Zhuhai  
Tel: 86-756-3210040

India – Bangalore  
Tel: 91-80-3090-4444  
India – New Delhi  
Tel: 91-11-4160-8631  
India – Pune  
Tel: 91-20-4121-0141  
Japan – Osaka  
Tel: 81-6-6152-7160  
Japan – Tokyo  
Tel: 81-3-6880-3770  
Korea – Daegu  
Tel: 82-53-744-4301  
Korea – Seoul  
Tel: 82-2-554-7200  
Malaysia – Kuala Lumpur  
Tel: 60-3-7651-7906  
Malaysia – Penang  
Tel: 60-4-227-8870  
Philippines – Manila  
Tel: 63-2-634-9065  
Singapore  
Tel: 65-6334-8870  
Taiwan – Hsin Chu  
Tel: 886-3-577-8366  
Taiwan – Kaohsiung  
Tel: 886-7-213-7830  
Taiwan – Taipei  
Tel: 886-2-2508-8600  
Thailand – Bangkok  
Tel: 66-2-694-1351  
Vietnam – Ho Chi Minh  
Tel: 84-28-5448-2100


















--	--	--

© 2020 Microchip Technology Inc.

## Documents / Resources

	<p><b>MICROCHIP PIC32CX-BZ2 Curiosity Board</b> [pdf] User Guide WBZ451, 2ADHKWBZ451, PIC32CX-BZ2, WBZ451, PIC32CX-BZ2 Curiosity Board, PIC32CX-BZ2, Curiosity Board, Board</p>
---	---

## References

- 
-  [Lithium Ion Polymer Battery - 3.7v 1200mAh : ID 258 : \\$9.95 : Adafruit Industries, Unique & fun DIY electronics and kits](#)
-  [Empowering Innovation | Microchip Technology](#)
-  [Empowering Innovation | Microchip Technology](#)
-  [microchip.com/DevelopmentTools/ProductDetails/AC102015](#)
-  [MPLAB® XC Compilers | Microchip Technology](#)
-  [MPLAB® X IDE | Microchip Technology](#)
-  [Product Change Notification | Microchip Technology](#)
-  [Quality | Microchip Technology](#)
-  [Microchip Lightning Support](#)
-  [Click Boards - MIKROE](#)
-  [Stepper 2 click – board with A4988 motor driver for bipolar stepper motors](#)
-  [Lithium Ion Polymer Battery - 3.7v 1200mAh : ID 258 : \\$9.95 : Adafruit Industries, Unique & fun DIY electronics and kits](#)
-  [microchip.com/DevelopmentTools/ProductDetails/AC102015](#)
-  [MPLAB® XC Compilers | Microchip Technology](#)
-  [MPLAB® X IDE | Microchip Technology](#)
-  [Stepper 2 click – board with A4988 motor driver for bipolar stepper motors](#)