

  
**IC-156P-AW3-  
W10Touch  
Computer**



# Micro Touch IC-156P-AW3-W10Touch Computer User Manual

[Home](#) » [Micro Touch](#) » Micro Touch IC-156P-AW3-W10Touch Computer User Manual 

## Contents

- 1 Micro Touch IC-156P-AW3-W10Touch Computer
- 2 Product Information
- 3 Product Usage Instructions
- 4 Compliance Information
- 5 Important Safety Instructions
- 6 Installation Tips
- 7 Product Overview
  - 7.1 Key Features
  - 7.2 Package Contents
- 8 Product Setup and Use
- 9 Mounting options
- 10 Specifications and Dimensions
- 11 Optional Accessory Installation
- 12 Cleaning
- 13 Solutions to Common Problems
- 14 Warranty Information
- 15 RoHS Declaration
- 16 Documents / Resources
  - 16.1 References



**Micro Touch IC-156P-AW3-W10Touch Computer**



## Product Information

### Specifications

- **Model:** IC-156P-AW3-W10
- **Rev:** 2010624.1
- **Operating System:** Windows 10

### Product Overview

#### Key Features

The Touch Computer IC-156P-AW3-W10 comes with the following key features:

- Touchscreen display
- Input and Output connectors for versatile connectivity
- VESA mount compatibility for flexible installation

#### Package Contents

When you unpack your Touch Computer, you should find the following items:

- Touch Computer unit
- Power adapter
- User manual

## Product Usage Instructions

### Installation Tips

Before setting up your Touch Computer, please consider the following installation tips:

- Choose a stable surface for placement

- Avoid exposing the device to direct sunlight or extreme temperatures

## **Product Setup and Use**

### **• Input and Output Connectors**

The Touch Computer includes various input and output connectors for connecting external devices. Refer to the user manual for detailed instructions on cable connections.

### **• Turning the Touch Computer On and Off**

To power on the Touch Computer, press the power button located on the device. To turn it off, press and hold the power button until the device shuts down.

## **Mounting Options**

### **VESA Mount**

The Touch Computer is VESA mount compatible, allowing you to mount it on compatible VESA mounts for optimal positioning.

## **FAQs**

### **• Q: What should I do if the touchscreen is not responding?**

A: If the touchscreen is unresponsive, try restarting the Touch Computer. If the issue persists, contact customer support for further assistance.

### **• Q: Can I install additional accessories on the Touch Computer?**

A: Yes, you can install optional accessories such as a stand, camera, or MSR for enhanced functionality. Refer to the user manual for installation instructions.

## **About This Document**

No part of this publication may be reproduced, transmitted, transcribed, stored in a retrieval system, or translated into any language or computer language, in any form or by any means, including, but not limited to, electronic, magnetic, optical, chemical, manual, or otherwise without prior written permission of MicroTouch™ a TES Company.

## **Compliance Information**

### **For FCC (USA)**

This equipment has been tested and found to comply with the limits for a Class B digital device, under part 15 of the FCC Rules. These limits are designed to provide reasonable protection against harmful interference in a residential installation. This equipment generates, uses, and can radiate radio frequency energy, and if not installed and used under the instructions, may cause harmful interference to radio communications. However, there is no guarantee that interference will not occur in a particular installation. If this equipment does cause harmful interference to radio or television reception, which can be determined by turning the equipment off and on, the user is encouraged to try to correct the interference by one or more of the following measures:

- Reorient or relocate the receiving antenna.
- Increase the separation between the equipment and the receiver.
- Connect the equipment to an outlet on a circuit different from that to which the receiver is connected.
- Consult the dealer or an experienced radio/TV technician for help.

This device complies with part 15 of the FCC Rules. Operation is subject to the following two conditions:

1. This device may not cause harmful interference, and
2. This device must accept any interference received, including interference that may cause undesired operation.

**For IC (Canada)**

CAN ICES-3(B)/NMB-3(B)

**For CE (EU)**

The device complies with the EMC Directive 2014/30/EU and Low Voltage Directive 2014/35/EU

**Disposal Information**

Waste Electrical and Electronic Equipment

This symbol on the product indicates that, under the European Directive 2012/19/EU governing waste from electrical and electronic equipment, this product must not be disposed of with other municipal waste. Please dispose of your waste equipment by handing it over to a designated collection point for the recycling of waste electrical and electronic equipment. To prevent possible harm to the environment or human health from uncontrolled waste disposal, please separate these items from other types of waste and recycle them responsibly to promote the sustainable reuse of material resources.

For more information about recycling this product, please contact your local city office or your municipal waste disposal service.

**Important Safety Instructions**

- Before using this product, please read the user manual thoroughly to help protect against property damage and to ensure your safety and the safety of others.
- Be sure to observe the following instructions.
- For installation or adjustment, please follow the instructions in this manual and refer all servicing to qualified service personnel.

**Usage Notice**

- **Warning**

To prevent the risk of fire or shock hazards, do not expose the product to moisture.

- **Warning**

Please do not open or disassemble the product, as this may cause an electric shock.

- **Warning**

The AC power cord must be connected to an outlet with a ground connection.

**Precautions**

Please follow all warnings, precautions, and maintenance as recommended in this user's manual to maximize the life of your unit.

**Do**

- Disconnect the power plug from the AC outlet if the product is not going to be used for an extended period.

## Don't

- Do not operate the product under the following conditions:
- Extremely hot, cold, or humid environment.
- Areas are susceptible to excessive dust and dirt.
- Near any appliance generates a strong magnetic field.

## Warnings

- To turn off the touch computer power, press the "Power" button on the right side on the back of the touch computer.
- When the Power button is pressed, the main power of the touch computer is not turned off completely. To disconnect the power completely, remove the power plug from the outlet.
  - If any of the following occur, remove the power plug from the outlet immediately: the touch computer is dropped; the housing is damaged; water is spilled onto or objects dropped inside the touch computer.
  - Failure to immediately remove the power plug may result in fire or electrical shock. Contact qualified service personnel for inspection.
  - If the power cord or plug is damaged or becomes hot, turn the touch computer off, make sure the power plug has cooled down, and remove the power plug from the outlet.
  - If the touch computer is still used in this condition, it may cause fire or electrical shock.

## Warning

This product can expose the user to chemicals, including lead, which are known to the State of California to cause cancer and birth defects or other reproductive harm. For more information go to [www.P65Warnings.ca.gov](http://www.P65Warnings.ca.gov).

## Installation Tips

### Things to avoid

- Don't install in a high-temperature environment. Operating temperature: 0°C to 40°C (0°F to 104°F), storage temperature -20°C – 60°C (-4°F to 140°F). If the touch computer is used in a high-temperature environment or near any heat sources, the case and other parts may become distorted or damaged, resulting in overheating or electrical shock.
- Don't install in a high-humidity environment.
  - **Operating humidity:** 20-90%
- Don't insert the power plug into anything other than a grounded 100-240V AC outlet.
- Don't use a damaged power plug or worn outlet.
- The use of extension cords is not recommended.
- The use of the power supply that comes with the MicroTouch product is strongly recommended.
- Don't place the touch computer on an unstable shelf or surface.
- Don't place objects on the touch computer.
- If the touch computer is covered or the vents are blocked, the touch computer could overheat and cause a fire.
- Please keep a 10 cm minimum distance between the touch computer and the surrounding structures to allow sufficient ventilation.
- Don't move the touch computer when it is connected to the power cord. When moving the touch computer,

make sure to remove the power plug and cables.

- If you encounter a problem during installation, please contact your dealer for assistance. Do not attempt to repair or open the touch computer.

## Product Overview

This desktop touch computer with Windows operating system is designed and developed to provide a flexible desktop touch computer solution with easily installed optional Camera and MSR accessories. Its versatility makes it an exceptional choice for applications in all business sectors, especially in the retail market.




### Key Features

- Processor: Core i3 7100U
- Size: 15.6" TFT LCD
- Resolution: 1920 x 1080
- Contrast Ratio: 1000:1
- Aspect Ratio: 16:9
- Brightness: 405 cd/m2
- View Angle: H:178°, V:178°
- Video Output Port: 1 Mini DP 100 mm x 100 mm VESA mount
- P-cap touch with up to 10 simultaneous touches
- Plug and Play: no touch driver installation required
- Warranty: 3 years

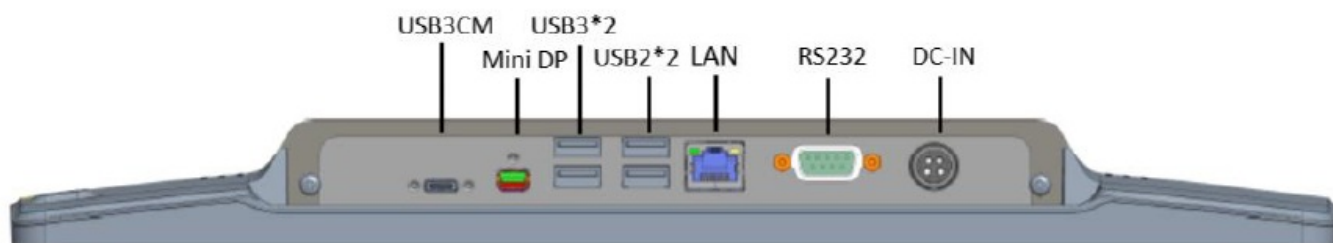
### Unpacking

When unpacking please ensure that all the items in the following Accessories section are included. If any are missing or damaged, please contact the place of purchase for a replacement.

### Package Contents

No.	Part	Picture	Qty
1	LCD Touch computer		1
2	AC Power Cord IEC C13 (1.8 m)		1
3	AC-DC converter		1

## Product Setup and Use

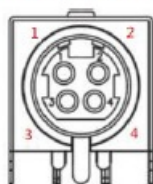


## Input and Output Connectors

### Power Connector

Power Input: 4-pin 24VDC power connector

24V DC in



Pin #	Signal Name	Pin #	Signal Name
1	24VDC	2	24VDC
3	GND	4	GND

**NOTE:** USE THE CORRECT POWER SUPPLY.

MicroTouch touch computer models IC-156P/215P-AW1 have similar power connectors, but they are 12 VDC. If you have a mix of different models, check the voltage rating on the power converter to ensure it is the correct voltage for the touch computer model.

### Communications Ports

- RS-232: RS-232 serial communications port
- USB 2\*2: Two type-A USB 2.0 communications ports
- USB 3\*2: Three type-A USB 3.0 communications ports
- USB3CM: USB Type-C with DP ALT mode and 5V@3A / 12V@3A output support

### Network Connection

LAN: RJ-45 Ethernet network connector (Supports 10/100/1000Mbps)

### Video Output

Mini DP: Miniature Display Port video output

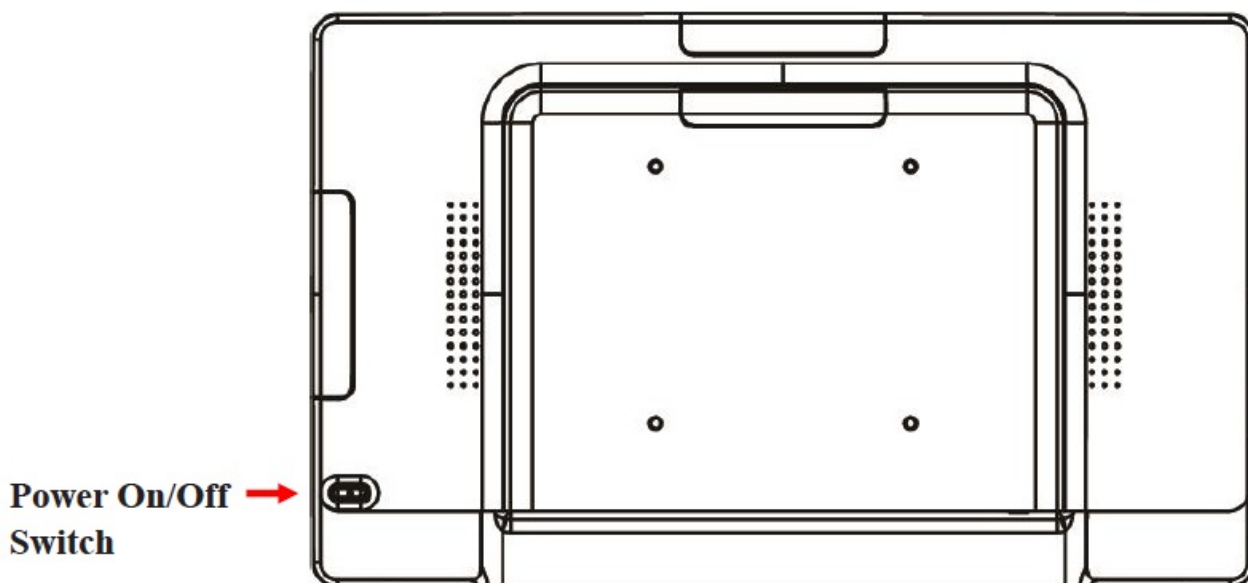
### Configuration and Cable Connections

- Power is supplied by the included AC-to-DC power supply's fixed 12-volt DC cable connector. Align the key on the power adapter's DC connector with the key on the DC jack on the touch computer and push the connector in. Plug the AC power cable connector into the receptacle on the power converter, then plug the male connector

of the AC cable into a wall outlet.

- Connect your network cable to the LAN connector. All other ports are optional outputs (communications ports are inputs/outputs).

### Turning the Touch Computer On and Off



Function	Description
Power On	Press the Power button to power on
Sleep, Restart and Shutdown	Use the Windows OS power controls to select
Forced power Off	Press and hold the Power button for 4 seconds to force power off (it is recommended to use the Windows Shutdown option)

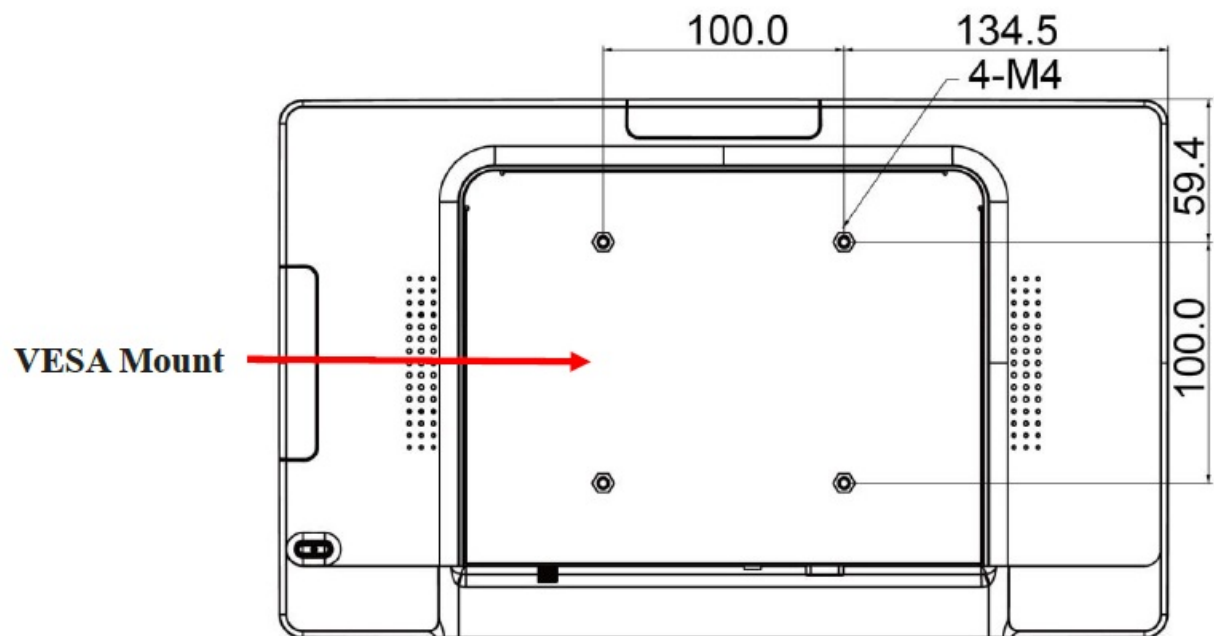
### Mounting options

The touch computer may be mounted to a stand, arm, or other device that has a 100mm x 100mm standard VESA mount hole pattern.

#### VESA Mount

The touch computer has an integral VESA standard mount pattern that conforms to the “VESA Flat Display Mounting Interface Standard” which defines a physical mounting interface and corresponds to the standards for touch computer mounting devices.





### Warning

Please use the correct screws! The distance between the back cover surface and the bottom of the screw hole is 8 mm. Please use four M4 diameter screws with 8 mm length to mount the touch computer.

## Specifications and Dimensions

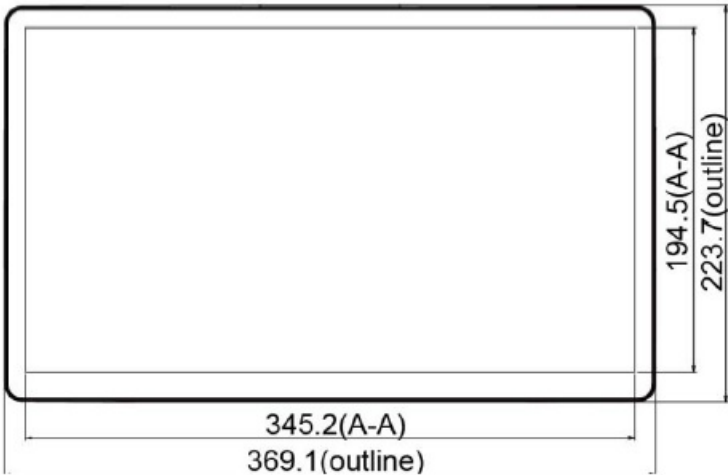
### Specifications

Item	Category	Specifications
<b>Operating System</b>	Windows 10	
<b>Processor</b>	Core™ i3-7100U	2.40 GHz, 3M Cache
<b>GPU</b>	Intel® HD Graphic 620	
<b>Memory</b>	8GB	So-DIMM DDR4, 2133 MHz
<b>Storage</b>	128 GB	SSD
<b>W-Fi</b>	802.11	a/b/g/n/ac
<b>Bluetooth</b>	4.2	Supports BLE
<b>LAN</b>	1 x RJ45	Giga LAN
<b>Communications Ports</b>	RS-232 serial	
	2 x USB	2.0 Type A
	2 x USB	3.0 Type A
	1 USB Type-C	Supports Display ALT Mode and PD2.0 (5V/3A, 12V/2.5A output, maximum 30W)
<b>LCD Panel</b>	Size	15.6" TFT LCD
	Resolution	1920 x 1080
	Brightness (typical)	405 cd/m2
	Contrast Ratio (typical)	1000:1
	Number of Colors	16.7 million
	Viewing Angle (typical)	Horizontal: 178 degrees; Vertical: 178 degrees
<b>Touch Screen</b>	Touch Type	P-CAP
	Simultaneous touch points	Up to 10
<b>Video Output</b>	Type	Mini DP digital
<b>Power</b>	AC Adapter Input	AC 100V – 240V (50/60Hz), 120W max
	AC Adapter Output	24VDC, 5A max

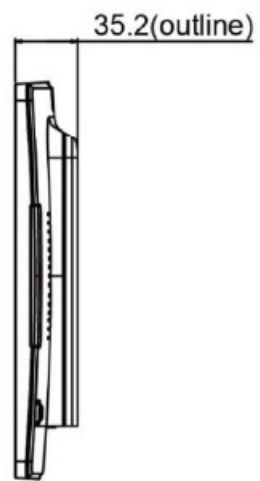
Speakers	2 x 2W	
Size and Weight	Dimensions (W x H x D)	369.1 mm x 223.7 mm x 35.2 mm
	Without stand	14.53 in x 8.81 in x 1.39 in
	Dimensions (W x H x D)	369.1 mm x 290.5 mm x 169.4 mm
	With IS-156-A1 Stand	14.53 in x 11.44 in x 6.67 in
	Net Weight	4.01 kg without stand, 5.98 kg with SS-156-A1 stand 8.84 lb without stand, 13.18 lb with SS-156-A1 stand
	VESA Mount	100 mm x 100 mm
Environment	Compliance	CE, FCC, LVD, RoHS
	Operating Temperature	0°C – 40°C
	Storage Temperature	-20°C – 60°C
	Operating Humidity	20% – 90% RH, non-condensing

Dimensions (without stand)

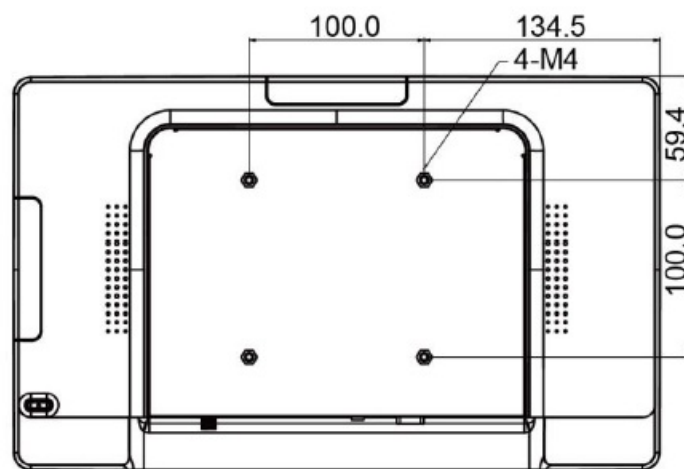
Front view



Side View

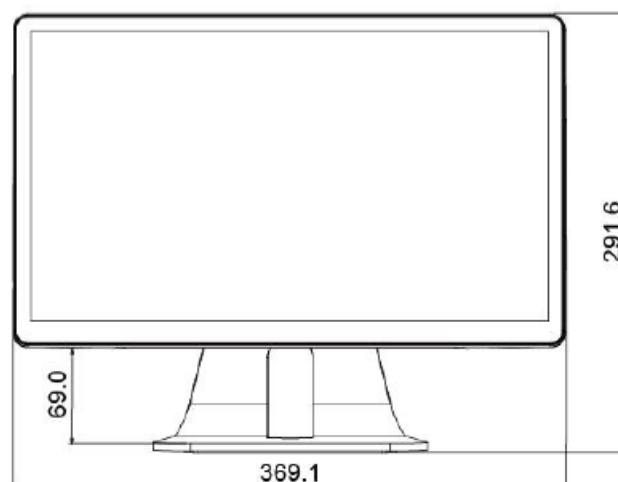


**Rear View**

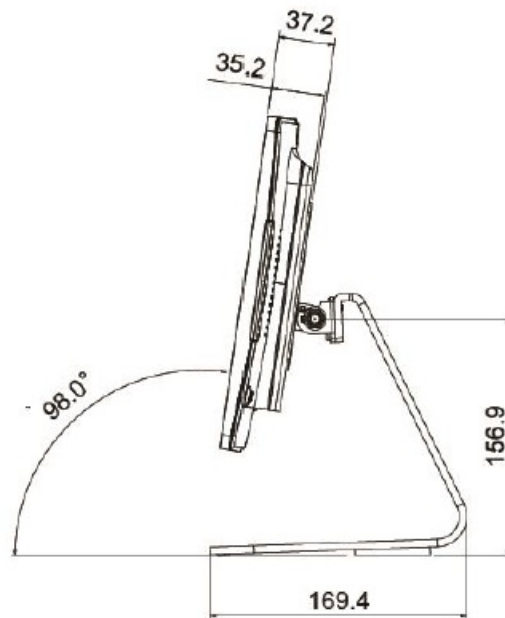


**Dimensions (with SS-156-A1 stand)**

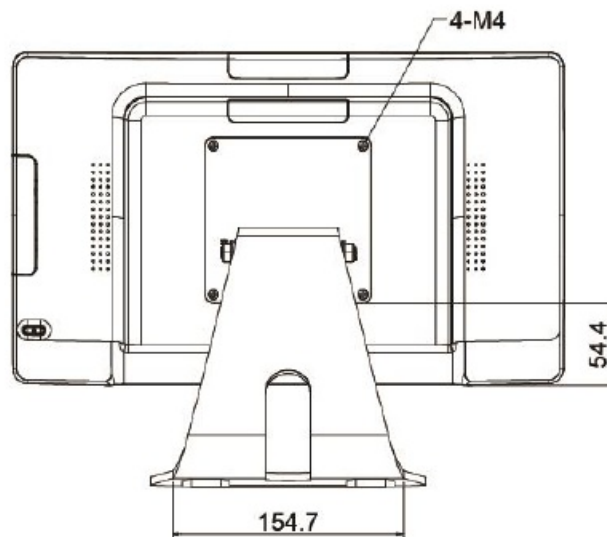
**Front view**



**Side View**



## Rear View



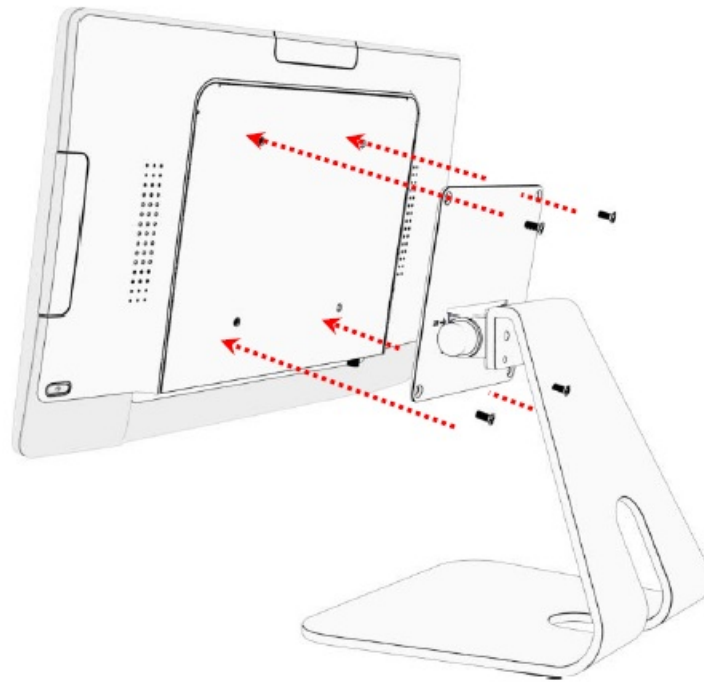
## Optional Accessory Installation

### Note:

Power the touch computer down before installing/ removing accessories.

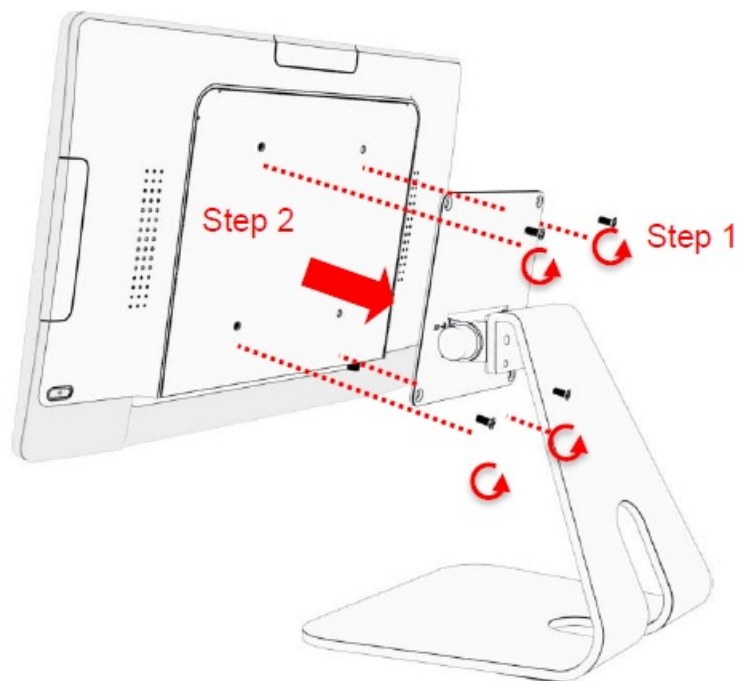
### Installing the Optional Stand

- Step 1: Place the touch computer face down on a clean padded surface.
- Step 2: Place the stand on the VESA mount and align the screw holes.
- Step 3: Install the four M4 screws to secure the stand to the touch computer.



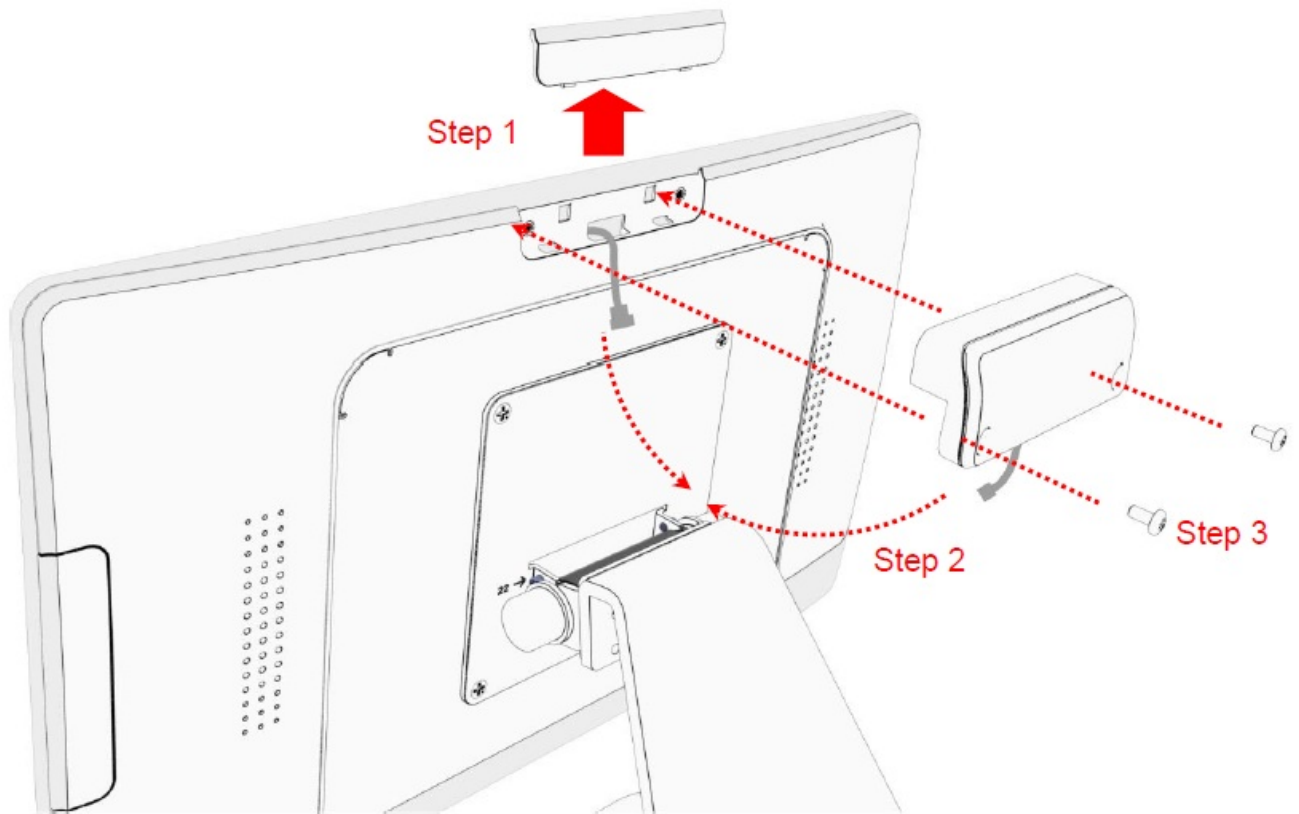
### Removing the Optional Stand

- Step 1: Place the touch computer face down on a clean padded surface.
- Step 2: Loosen the four screws
- Step 2: Pull the stand away from the touch computer and remove it.



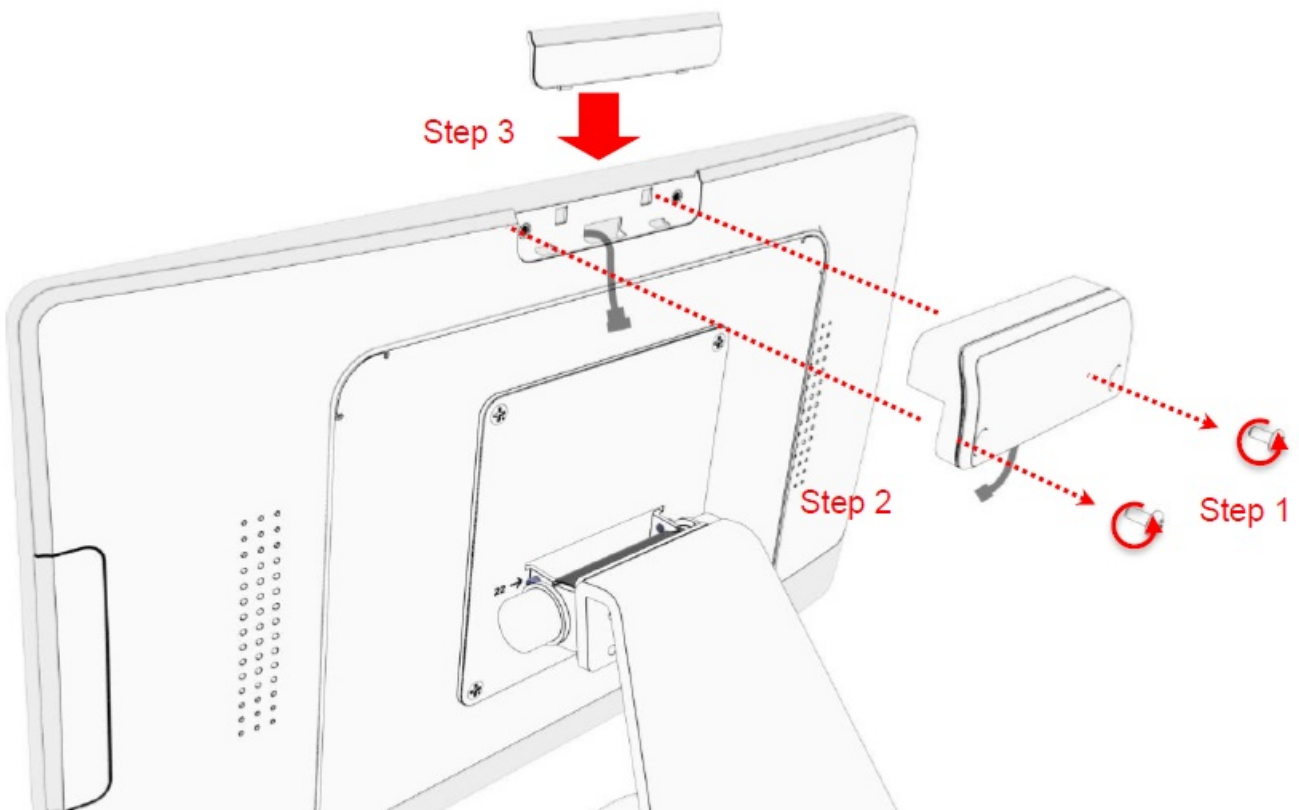
### Installing the Camera

- Step 1: Pull the accessory port cover upward to remove it.
- Step 2: Connect the camera cable to the touch computer's accessory cable. Important: Do not force – Be sure to properly align the polarity keys in the two connectors. The cable colors will also match from cable to cable.
- Step 3: Install the two M3 screws to secure the camera.



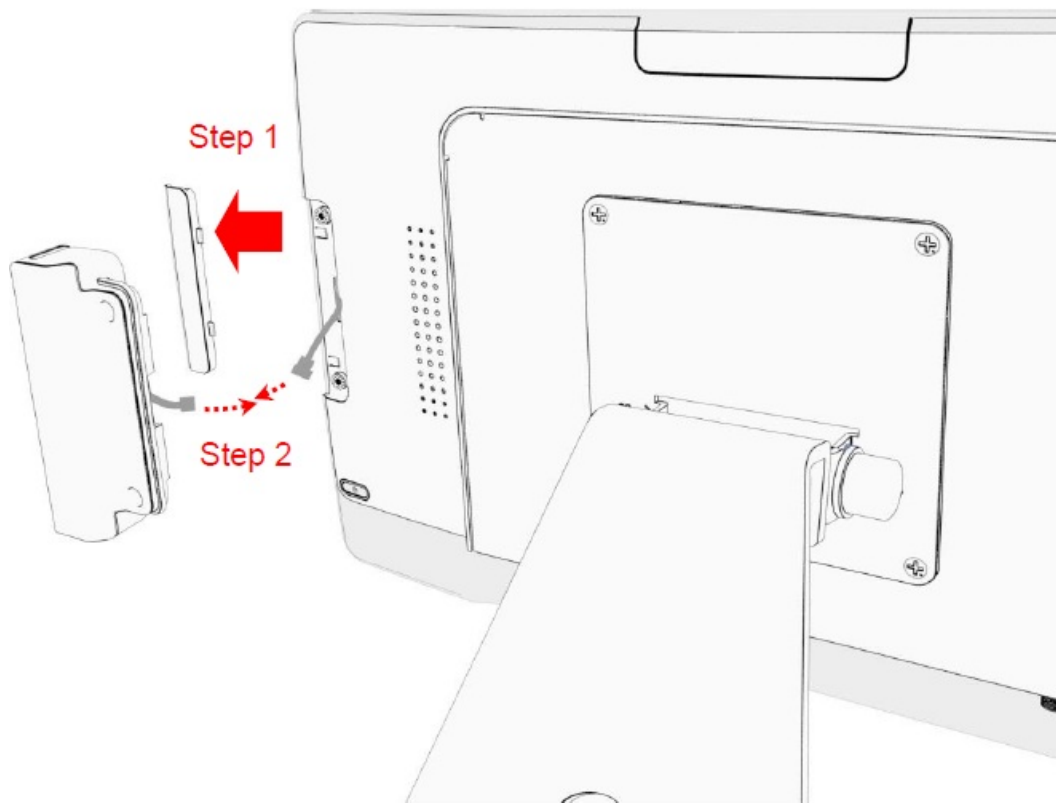
## Removing the Camera

- Step 1: Remove the two M3 screws.
- Step 2: Disconnect the camera cable from the touch computer.
- Step 3: Reinstall the accessory port cover.

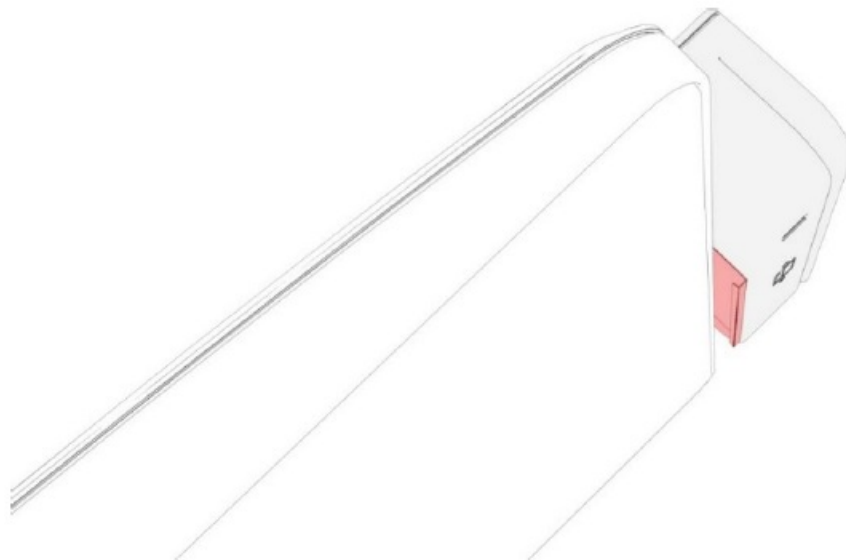


## Installing the MSR

- Step 1: Pull the accessory port cover away from the touch computer to remove it.
- Step 2: Connect the MSR cable to the touch computer accessory cable. Important: Do not force – Be sure to properly align the polarity keys in the two connectors. The cable colors will also match from cable to cable.

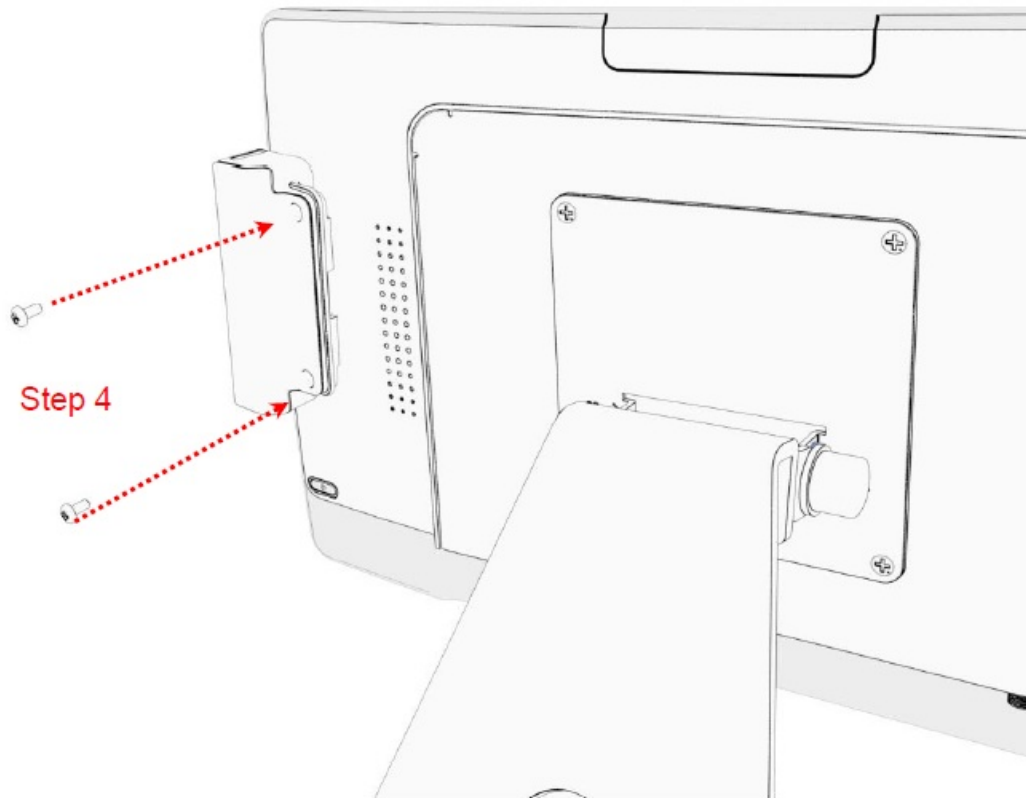


- Step 3: The metal bracket hooks into the gap between the cover glass and the bezel.



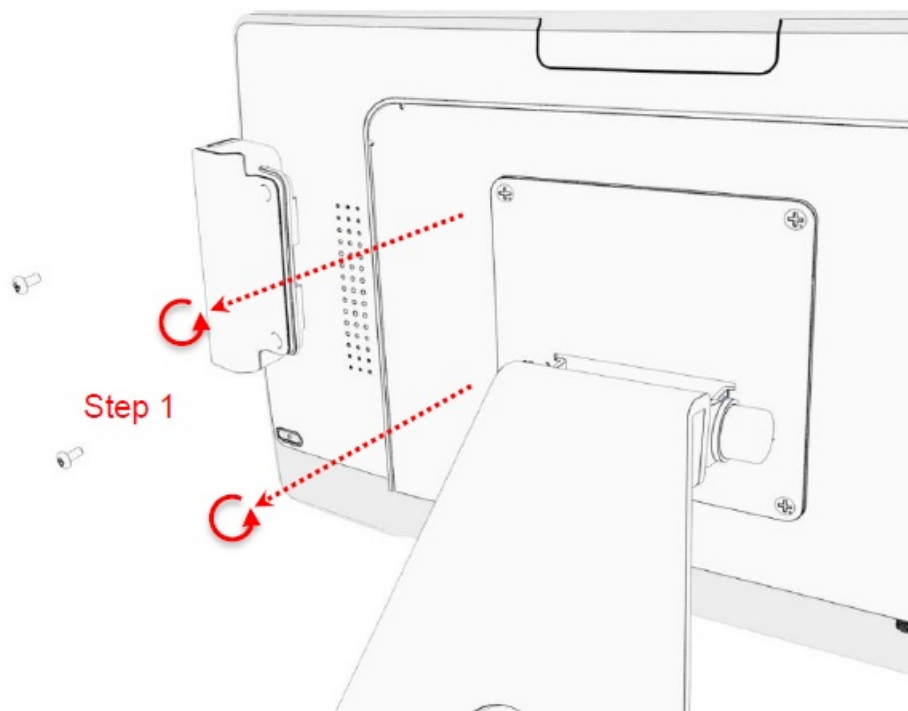
- Step 4: Install the two M3 screws to secure the MSR.



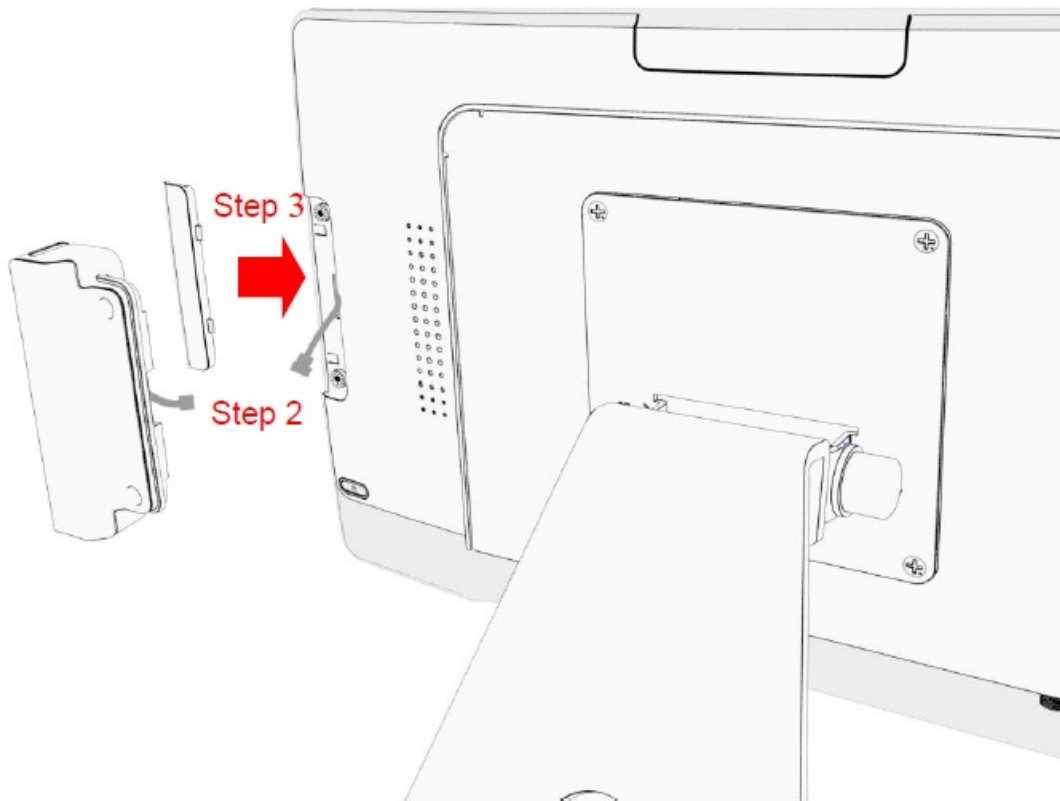


## Removing the MSR

- Step 1: Loosen the screws.



- Step 2: Disconnect the MSR cable from the touch computer and pull the metal bracket free of the slot.
- Step 3: Reinstall the accessory port cover.



## Cleaning

Turn off the product and disconnect from AC power before cleaning. Turning the product off protects against accidental touch selections that could cause problems or hazardous results. Disconnecting power protects against hazardous interaction between accidental liquid entry and electricity. To clean the case, dampen a clean cloth lightly with water and a mild detergent and wipe gently. Use a soft, dry cloth to clean areas that have ventilation openings to avoid getting any liquid or moisture inside. If liquid does get inside, do not use the product until it has been inspected and tested by a qualified service technician. To clean the touch screen, apply a glass cleaning solution to a soft cloth and wipe the screen clean. To ensure that liquid does not enter the product, do not spray the cleaning solution directly onto the touch screen or any other part. Do not use volatile solvents, waxes, or any abrasive cleaners on any part of the product.

## Solutions to Common Problems

- Touch functionality doesn't work or works incorrectly.
- Completely remove any protective sheets from the touch screen, then cycle power Off/On.
- Ensure that the touch computer is in an upright position with nothing touching the screen, then cycle power Off/On.

## Warranty Information

Except as otherwise stated herein, or in an order acknowledgment delivered to Buyer, Seller warrants to Buyer that the Product shall be free of defects in materials and workmanship. The warranty for the touch computer and its components is three years. The seller makes no warranty regarding the model life of components. Seller's suppliers may at any time and from time to time make changes in the components delivered as Products or components. Buyer shall notify Seller in writing promptly (and in no case later than 30 days after discovery) of the failure of any Product to conform to the warranty set forth above; shall describe in commercially reasonable detail in such notice the symptoms associated with such failure; and shall provide to Seller the opportunity to inspect such Products as installed, if possible.

The notice must be received by the Seller during the Warranty Period for such product unless otherwise directed in writing by the Seller. Within thirty days after submitting such notice, Buyer shall package the allegedly defective Product in its original shipping carton(s) or a functional equivalent and shall ship to Seller at Buyer's expense and risk. Within a reasonable time after receipt of the allegedly defective Product and verification by Seller that the Product fails to meet the warranty set forth above, Seller shall correct such failure by, at Seller's options, either (i) modifying or repairing the Product or (ii) replacing the Product. Such modification, repair, or replacement and the return shipment of the Product with minimum insurance to Buyer shall be at Seller's expense. Buyer shall bear the risk of loss or damage in transit and may insure the Product. Buyer shall reimburse Seller for transportation cost incurred for Product returned but not found by Seller to be defective. Modification or repair, of Products may, at Seller's option, take place either at Seller's facilities or at Buyer's premises. If Seller is unable to modify, repair, or replace a Product to conform to the warranty set forth above, then Seller shall, at Seller's option, either refund to Buyer or credit to Buyer's account the purchase price of the Product less depreciation calculated on a straight-line basis over Seller's stated Warranty Period.

These remedies shall be the buyer's exclusive remedies for breach of warranty. Except for the express warranty set forth above, the seller grants no other warranties, express or implied by statute or otherwise, regarding the products, their fitness for any purpose, their quality, their merchantability, their non-infringement, or. No employee of Seller or any other party is authorized to make any warranty for the goods other than the warranty set forth herein. Seller's liability under the warranty shall be limited to a refund of the purchase price of the product. In no event shall Seller be liable for the cost of procurement or installation of substitute goods by Buyer or for any special, consequential, indirect, or incidental damages. Buyer assumes the risk and agrees to indemnify Seller against and hold Seller harmless from all liability relating to (i) assessing the suitability for Buyer's intended use of the Products and any system design or drawing and (ii) determining the compliance of Buyer's use of the Products with applicable laws, regulations, codes, and standards. Buyer retains and accepts full responsibility for all warranty and other claims relating to or arising from Buyer's products, which include or incorporate Products or components manufactured or supplied by Seller. Buyer is solely responsible for all representations and warranties regarding the Products made or authorized by Buyer. Buyer will indemnify Seller and hold Seller harmless from any liability, claims, loss, cost, or expenses (including reasonable attorney's fees) attributable to Buyer's products or representations or warranties concerning same.


## **RoHS Declaration**

Equipment name: Touch LCD Touch computer    Type designation (Type): IC-156P-AW3-W10						
Component	Restricted substances and their chemical symbols					
	Lead (Pb)	Mercury (Hg)	Cadmium (Cd)	Hexavalent chromium (Cr+6)	Polybrominated biphenyls (PBB)	Polybrominated diphenyl ethers (PBDE)
Plastic Parts	○	○	○	○	○	○
Metal Parts		○	○	○	○	○
Cable components		○	○	○	○	○
LCD Panel		○	○	○	○	○
Touch Panel		○	○	○	○	○
PCBA		○	○	○	○	○
Software	○	○	○	○	○	○
<b>Notes</b>  ○ indicates that the percentage of the restricted substance does not exceed the permissible limit.  – indicates that the restricted substance is exempt.						

- [www.MicroTouch.com](http://www.MicroTouch.com)
- [www.usorders@microtouch.com](mailto:www.usorders@microtouch.com)
- TES AMERICA LLC | 215 Central Avenue, Holland, MI 49423 | [616-786-5353](tel:616-786-5353)

The information presented in this user manual is intended as general information about MicroTouch products and is subject to change. Product specifications and warranties will be governed by TES America, LLC. Standard terms and conditions of sale. Products are subject to availability. Copyright © 2022 TES America, LLC. All rights reserved. Android is a trademark of Google LLC. Windows is a trademark of Microsoft Corporation in the United States and other countries.

## Documents / Resources

	<a href="#">Micro Touch IC-156P-AW3-W10 Touch Computer</a> [pdf] User Manual IC-156P-AW3-W10 Touch Computer, IC-156P-AW3-W10, Touch Computer, Computer
---	---

## References

- [★ MicroTouch | Our brand is back, but our touchscreens never left.](#)

- ✦ [MicroTouch | Our brand is back, but our touchscreens never left.](#)
- 🌐 [P65Warnings.ca.gov](#)
- ✦ [MicroTouch | Our brand is back, but our touchscreens never left.](#)
- [User Manual](#)

[Manuals+](#), [Privacy Policy](#)

This website is an independent publication and is neither affiliated with nor endorsed by any of the trademark owners. The "Bluetooth®" word mark and logos are registered trademarks owned by Bluetooth SIG, Inc. The "Wi-Fi®" word mark and logos are registered trademarks owned by the Wi-Fi Alliance. Any use of these marks on this website does not imply any affiliation with or endorsement.