



# MICRO SWISS M3103 FlowTech Hotend Installation Guide

[Home](#) » [MICRO SWISS](#) » MICRO SWISS M3103 FlowTech Hotend Installation Guide 



SKU M3103

Micro Swiss FlowTech™ Hotend for Creality Ender-3 V3 KE  
INSTALLATION INSTRUCTIONS

## Contents

- [1 M3103 FlowTech Hotend](#)
- [2 Documents / Resources](#)
  - [2.1 References](#)

## M3103 FlowTech Hotend

### Tools Required:

- 1.5mm Allen wrench
- 2.0mm Allen wrench
- 7mm wrench

### What's in the box:

- Silicone Sock
- Heater Core
- 0.4mm Nozzle
- Copper Thermal Adapter
- Titanium Mounting Screw (2x)

## STEP 1

### REMOVE THE FAN SHROUD

⚠ For your safety – allow the hotend to cool to room temperature and disconnect the power cable.

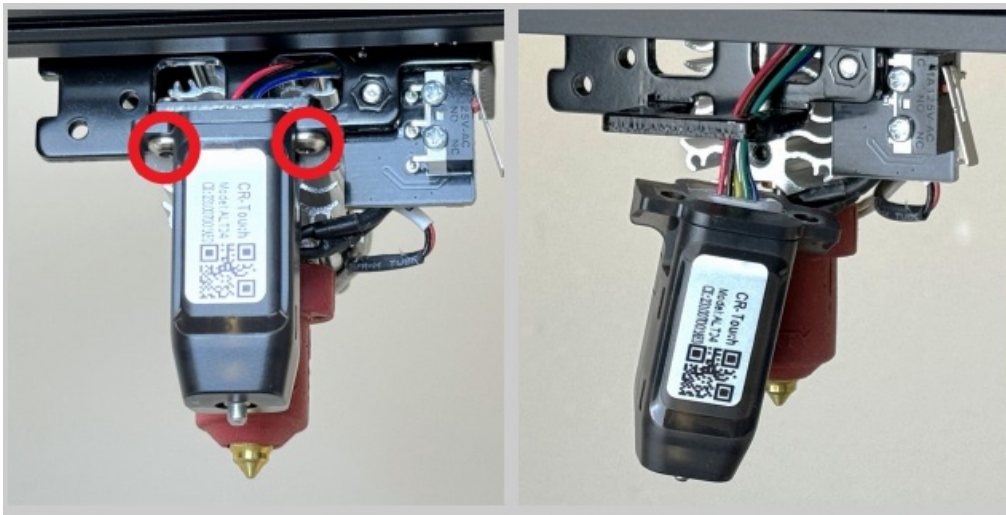
- Remove the three screws securing the fan shroud and pull the fan shroud off of the print head.  
(2.0mm Allen wrench)
- Disconnect the two part cooling fan cables from the break out board.



## STEP 2 UNSCREW THE CR-TOUCH

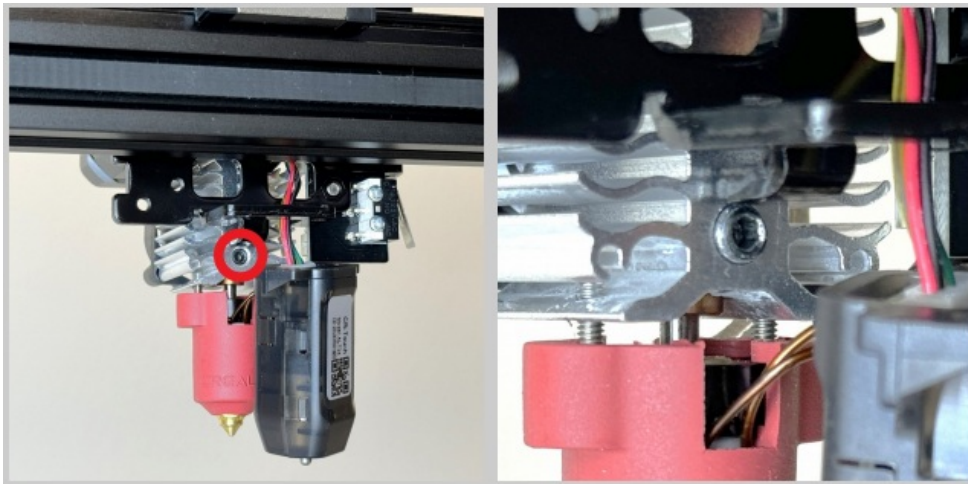
- Remove the two screws holding the CR-Touch probe.  
(2.0mm Allen wrench)

The CR-Touch can remain attached to the cable, it will only need to be moved aside to gain access the set screw in the cooling block in the following steps.



## STEP 3 LOOSEN THE THERMAL BREAK

- Loosen the set-screw located on the back-side of the cooling block.  
(2.0mm Allen wrench)



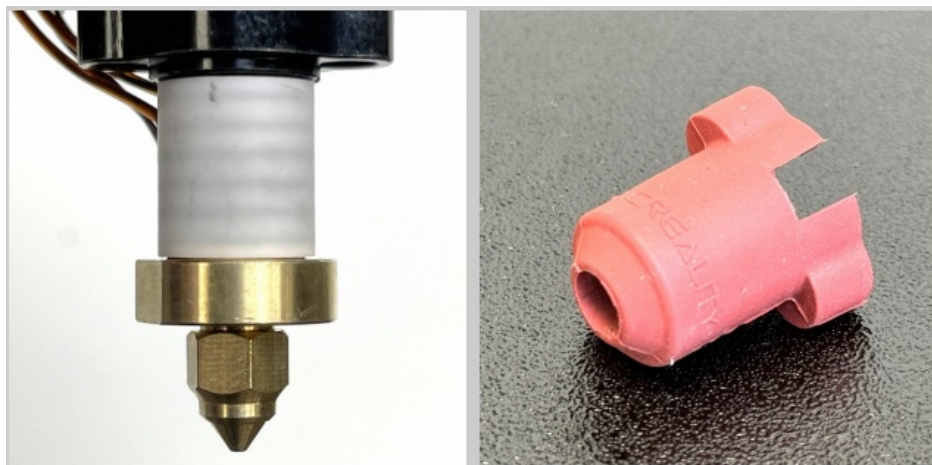
#### **STEP 4**

##### **REMOVE THE SILICONE SOCK**

⚠ Verify the hotend is at room temperature before touching it.

- Pull the silicone sock off of the heater core.

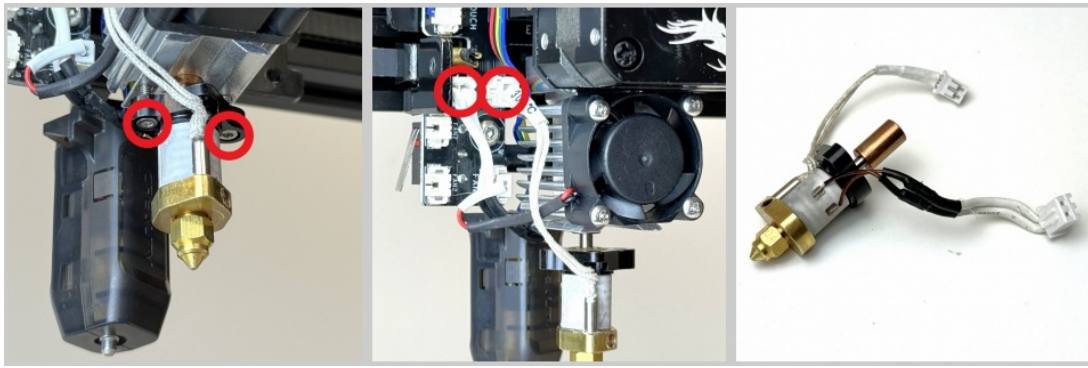
There is a ridge near the bottom of the stock hotend so the silicone sock will need to be pinched and pulled over the ridge.



#### **STEP 5**

##### **REMOVE THE HEATER CORE**

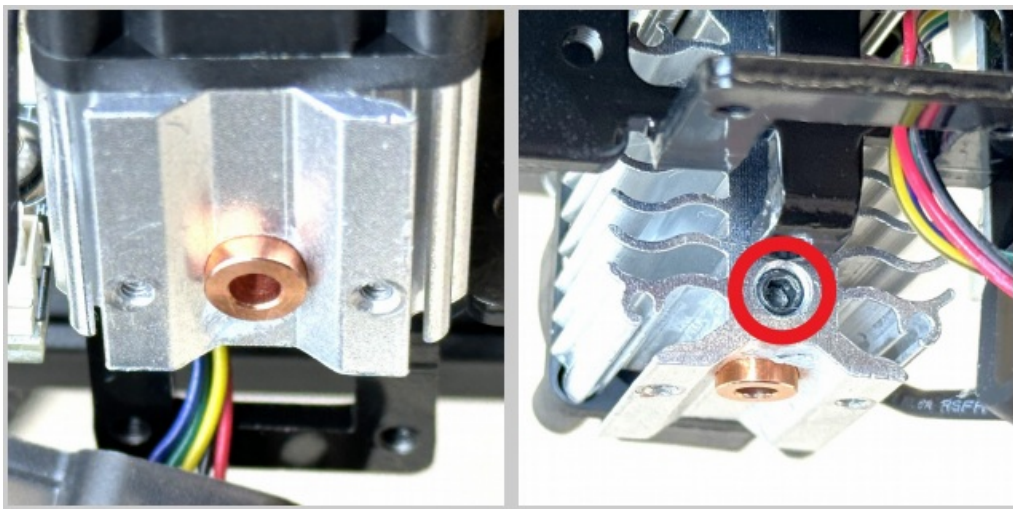
- Remove the two screws that secure the heater core to the cooling block.  
(1.5mm Allen wrench)
- Disconnect the to heater and thermistor connectors from the breakout board.



## STEP 6

### INSTALL THE COPPER THERMAL ADAPTER

- Insert the copper thermal adapter into the cooling block.  
**Ensure that the larger hole is at the bottom.**
- While continuing to push the copper thermal adapter up, tighten the set screw located at the back of the cooling block.  
(2.0mm Allen wrench)

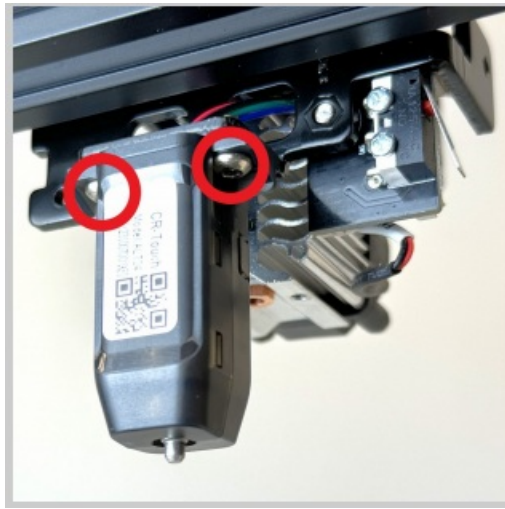


## STEP 7

### REINSTALL THE CR-TOUCH

- Reattach the CR-Touch probe to the carriage.  
(2.0mm Allen wrench)





## STEP 8 INSTALL THE HEATER CORE

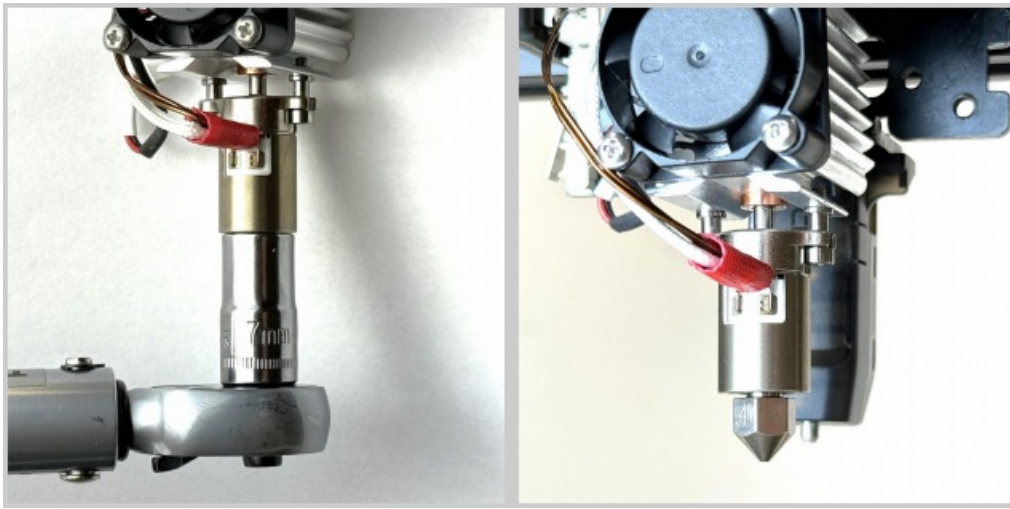
- While holding the heater core with the two titanium mounting screws on each side, push the screws into the cooling block.
- Tighten the two screws until snug.  
(1.5mm Allen wrench)
- Attach the heater and thermistor connectors to the matching ports on the breakout board.



## STEP 9 INSTALL THE NOZZLE

- Tighten the nozzle until it is snug.  
(7mm wrench)

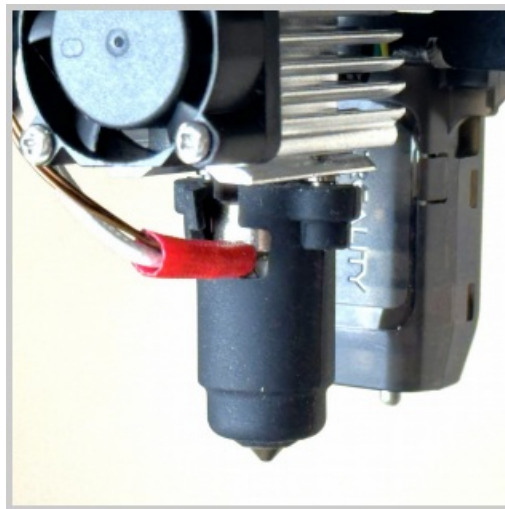
Recommended torque: 15 inch-pounds / 1.7 Newton Meters.  
There is no need to heat the hotend before tightening the FlowTech nozzle.



#### **STEP 10**

#### **INSTALL THE SILICONE SOCK**

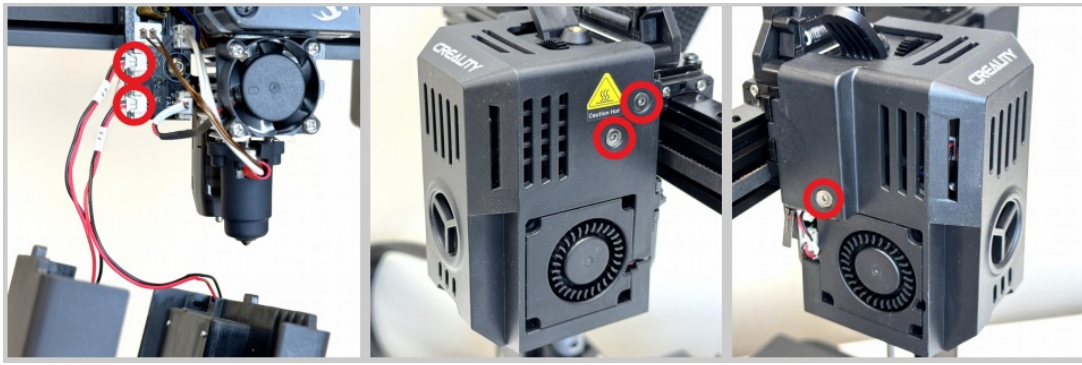
- Align the cutout slot in the silicone sock with the heater core cables.
- Push the silicone sock up until it wraps around the top of the heater core.



#### **STEP 11**

#### **REINSTALL THE FAN SHROUD**

- Reattach the two part cooling fan cables to the breakout board.
- Place the fan shroud over the print head.
- Install the three screws to secure the fan shroud.  
(2.0mm Allen wrench)



[WWW.MICRO-SWISS.COM](http://WWW.MICRO-SWISS.COM)

## Documents / Resources



[MICRO SWISS M3103 FlowTech Hotend](#) [pdf] Installation Guide  
M3103 FlowTech Hotend, M3103, FlowTech Hotend, Hotend

## References

- [User Manual](#)

[Manuals+](#), [Privacy Policy](#)

This website is an independent publication and is neither affiliated with nor endorsed by any of the trademark owners. The "Bluetooth®" word mark and logos are registered trademarks owned by Bluetooth SIG, Inc. The "Wi-Fi®" word mark and logos are registered trademarks owned by the Wi-Fi Alliance. Any use of these marks on this website does not imply any affiliation with or endorsement.