



MICRO SWISS M3102 FlowTech Hotend for Creality Instruction Manual

[Home](#) » [MICRO SWISS](#) » MICRO SWISS M3102 FlowTech Hotend for Creality Instruction Manual 



Micro Swiss FlowTech™ Hotend for Creality CR-10 SE
INSTALLATION INSTRUCTIONS
SKU M3102

Contents

- [1 M3102 FlowTech Hotend for Creality](#)
- [2 REMOVE THE FAN SHROUD](#)
- [3 REMOVE THE SILICONE SOCK](#)
- [4 INSTALL THE COPPER THERMAL ADAPTER](#)
- [5 INSTALL THE SILICONE SOCK](#)
- [6 Documents / Resources](#)
 - [6.1 References](#)

M3102 FlowTech Hotend for Creality

Tools Required:

- 1.5mm Allen wrench
- 2.0mm Allen wrench
- 7mm wrench

What's in the box:

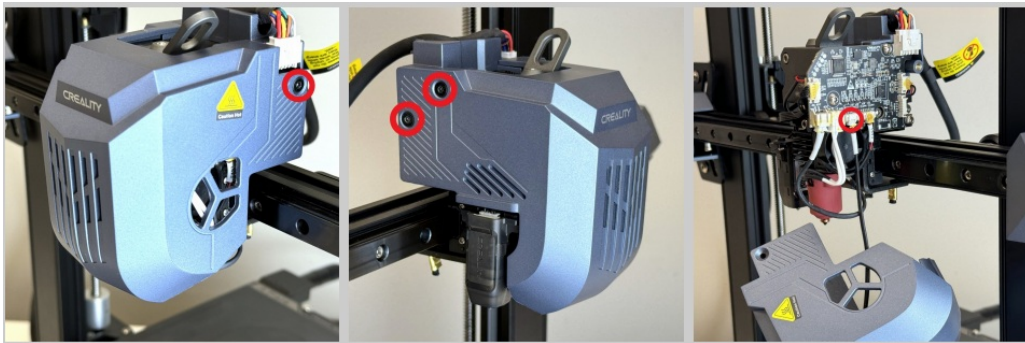
Silicone Sock	Copper Thermal Adapter
Heater Core	Titanium Mounting Screw (2x)
0.4mm Nozzle	

REMOVE THE FAN SHROUD

⚠For your safety – allow the hotend to cool to room temperature and disconnect the power cable.

- Remove the three screws securing the fan shroud and pull the fan shroud off of the print head. (2.0mm Allen wrench)
- Disconnect the part cooling fan cable from the break out board.

STEP 1

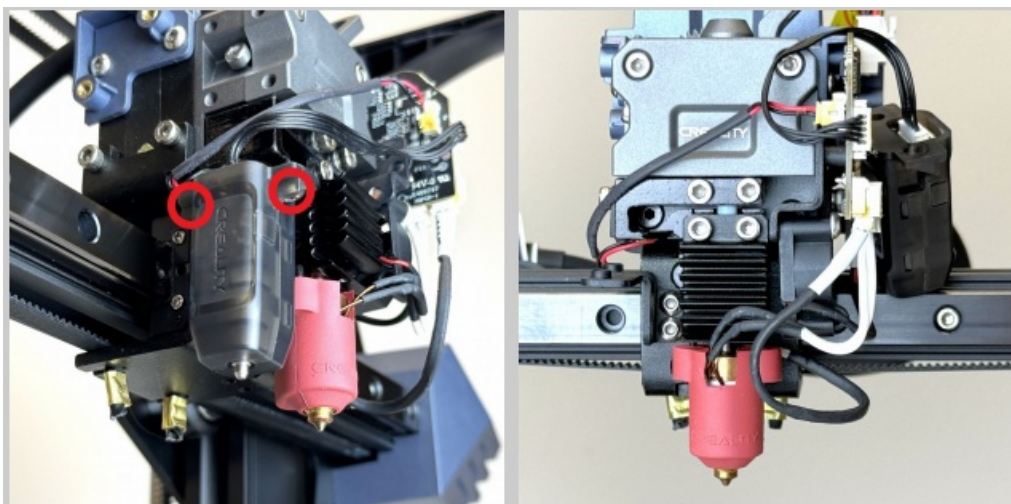


UNSCREW THE CR-TOUCH

- Remove the two screws holding the CR-Touch probe. (2.0mm Allen wrench)

The CR-Touch can remain attached to the cable, it will only need to be moved aside to gain access the set screw in the cooling block in the following steps.

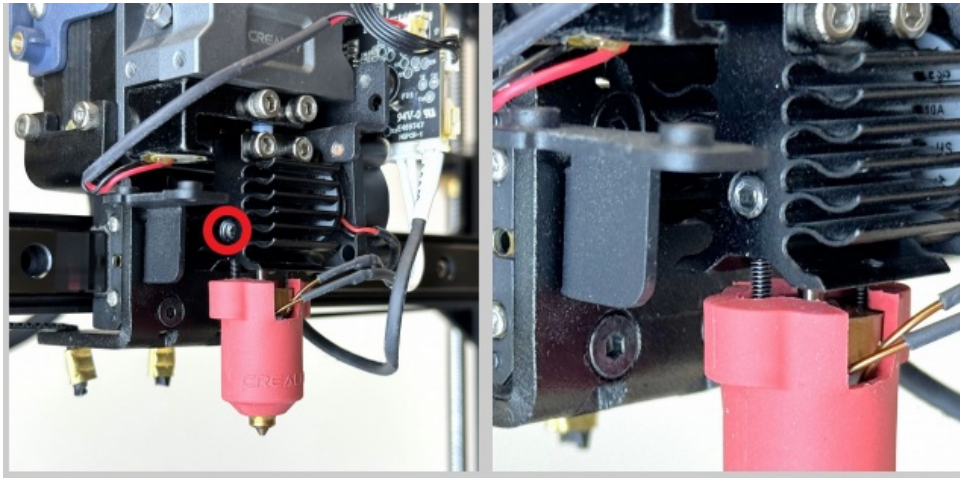
STEP 2



LOOSEN THE THERMAL BREAK

- Loosen the set-screw located on the left-side of the cooling block. (2.0mm Allen wrench)

STEP 3



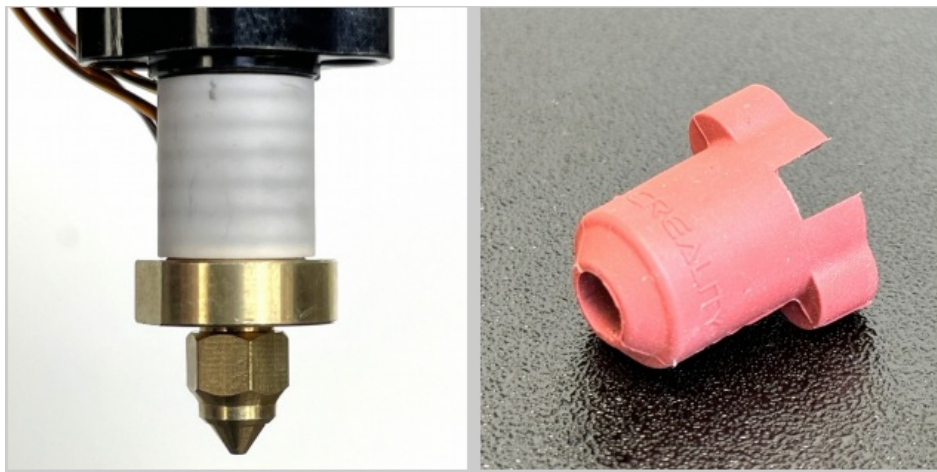
REMOVE THE SILICONE SOCK

⚠ Verify the hotend is at room temperature before touching it.

- Pull the silicone sock off of the heater core.

There is a ridge near the bottom of the stock hotend so the silicone sock will need to be pinched and pulled over the ridge.

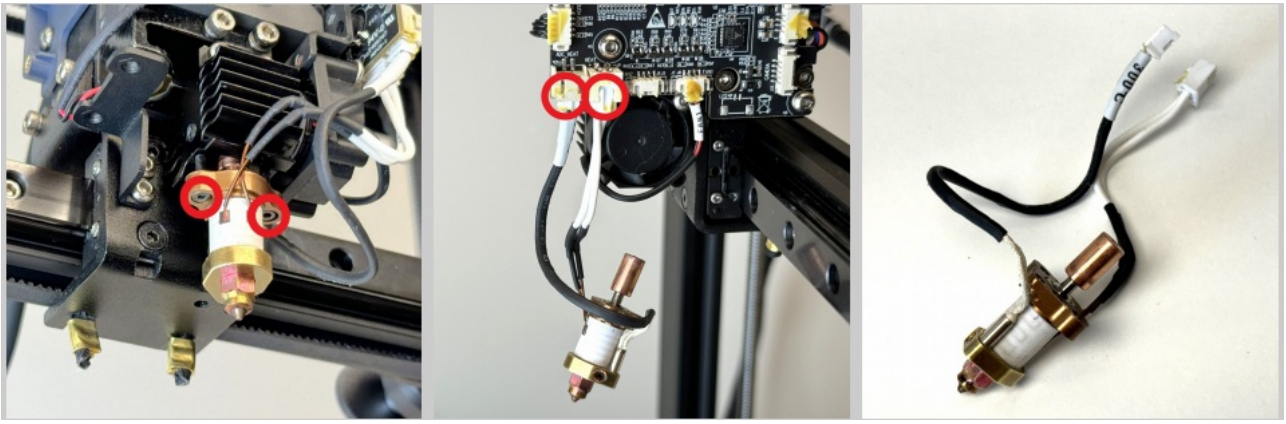
STEP 4



REMOVE THE HEATER CORE

- Remove the two screws that secure the heater core to the cooling block. (1.5mm Allen wrench)
- Disconnect the to heater and thermistor connectors from the breakout board.

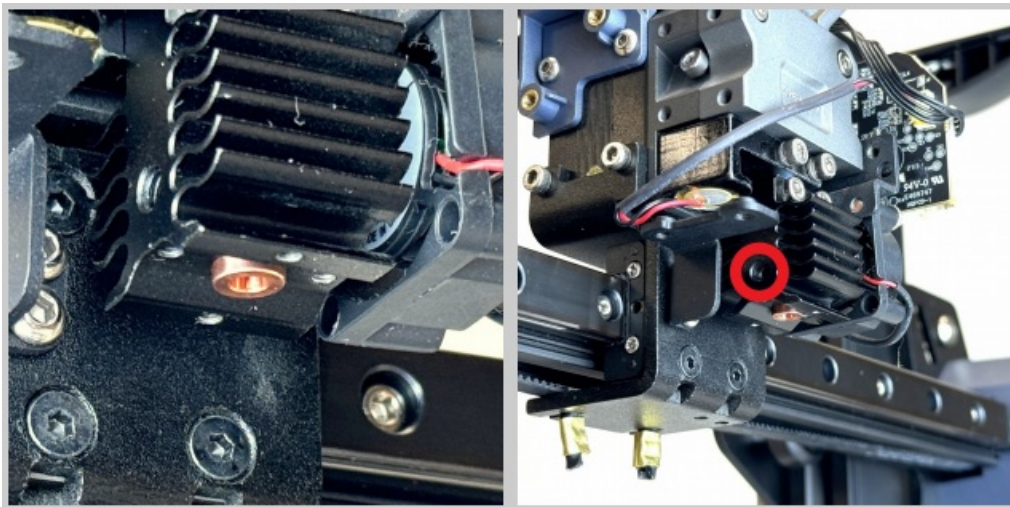
STEP 5



INSTALL THE COPPER THERMAL ADAPTER

- Insert the copper thermal adapter into the cooling block.
Ensure that the larger hole is at the bottom.
- While continuing to push the copper thermal adapter up, tighten the set screw located on the left side of the cooling block.
(2.0mm Allen wrench)

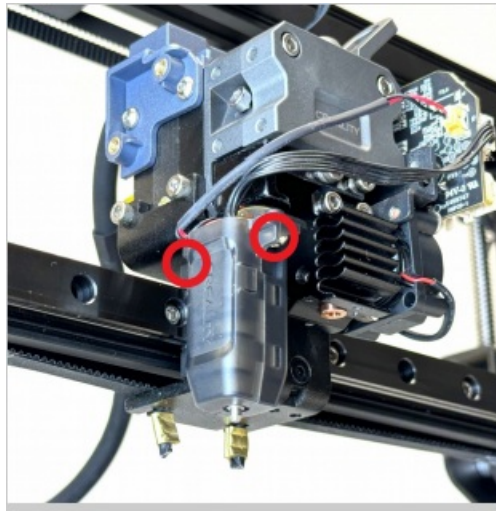
STEP 6



REINSTALL THE CR-TOUCH

- Reattach the CR-Touch probe to the carriage. (2.0mm Allen wrench)

STEP 7

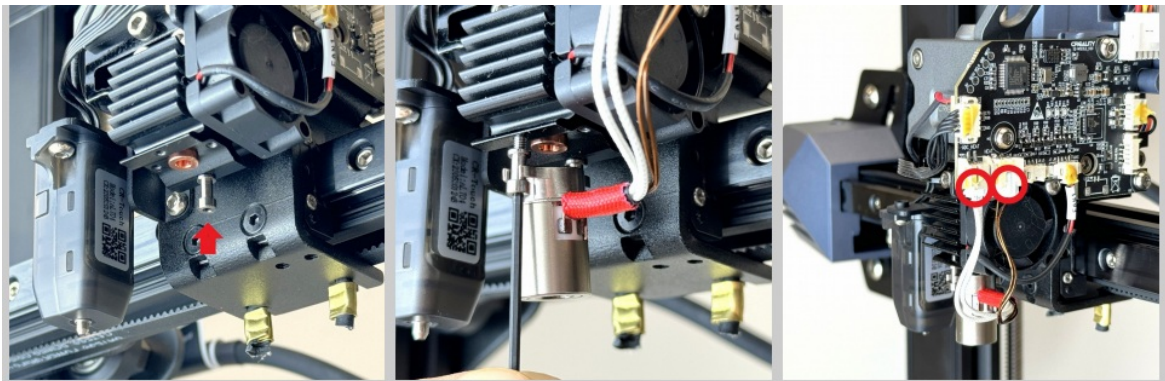


INSTALL THE HEATER CORE

- Attach the heater core to the cooling block using the titanium mounting screws. (1.5mm Allen wrench)
- Attach the heater and thermistor connectors to the matching ports on the breakout board.

The heater core will still be free to wobble at this point.

STEP 8



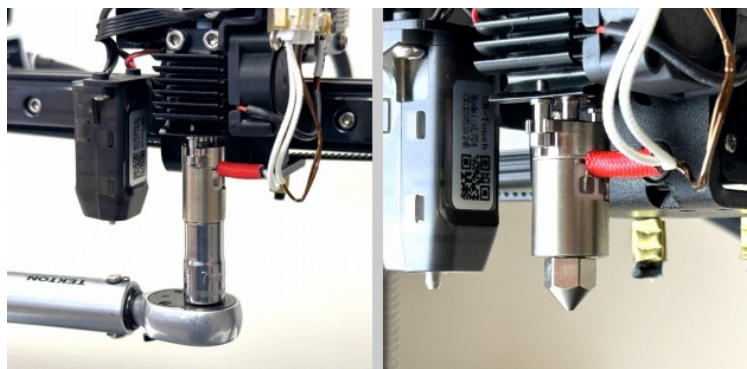
INSTALL THE NOZZLE

- Tighten the nozzle until it is snug. (7mm wrench)

Recommended torque: 15 inch-pounds / 1.7 Newton Meters.

There is no need to heat the hotend before tightening the FlowTech nozzle.

STEP 9



INSTALL THE SILICONE SOCK

- Align the cutout slot in the silicone sock with the heater core cables.
- Push the silicone sock up until it wraps around the top of the heater core.

STEP 10



REINSTALL THE FAN SHROUD

- Reattach the part cooling fan cable to the breakout board.
- Place the fan shroud over the print head.
- Install the three screws to secure the fan shroud. (2.0mm Allen wrench)

STEP 11



Documents / Resources



[MICRO SWISS M3102 FlowTech Hotend for Creality](#) [pdf] Instruction Manual
M3102 FlowTech Hotend for Creality, M3102, FlowTech Hotend for Creality, Hotend for Creality, Creality

References

- [User Manual](#)

[Manuals+](#), [Privacy Policy](#)

This website is an independent publication and is neither affiliated with nor endorsed by any of the trademark owners. The "Bluetooth®" word mark and logos are registered trademarks owned by Bluetooth SIG, Inc. The "Wi-Fi®" word mark and logos are registered trademarks owned by the Wi-Fi Alliance. Any use of these marks on this website does not imply any affiliation with or endorsement.